

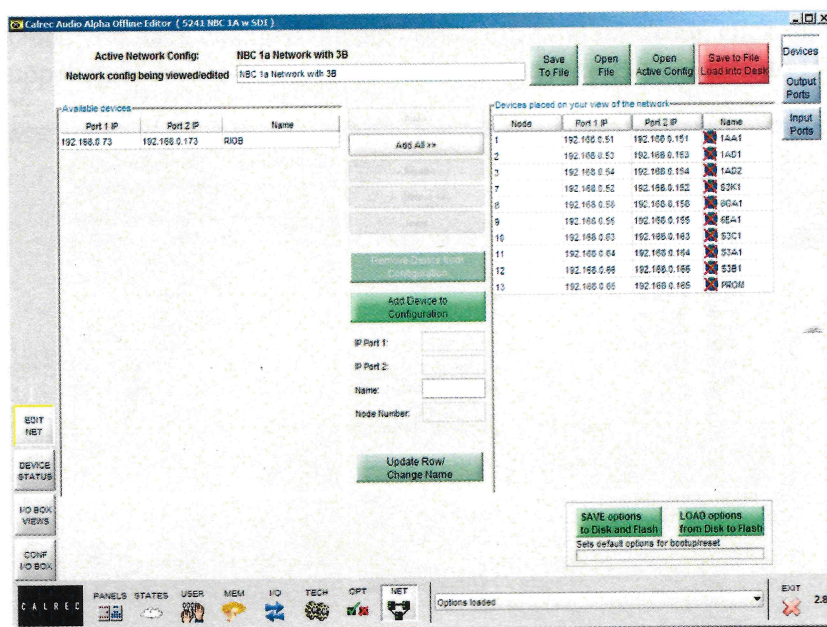
## SCI Calrec Tech Memo – Using Main Application to add new Hydra I/O box

Go to: NET \ EDIT NET \ DEVICES.

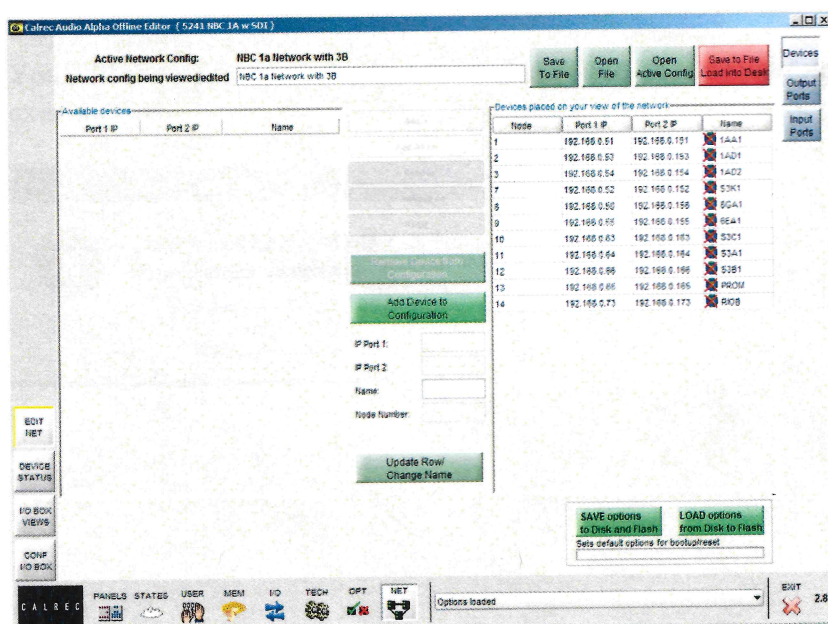
You will see the entire active Hydra Network on the right side of the screen.

You will see the newly added I/O box as an available device on the left hand side of the screen.

Select the new I/O box on the left hand side of the screen and then click on the button in the center of the screen that is labeled as “Add >”.



The new I/O box will be added to the end of the list on the right hand side.



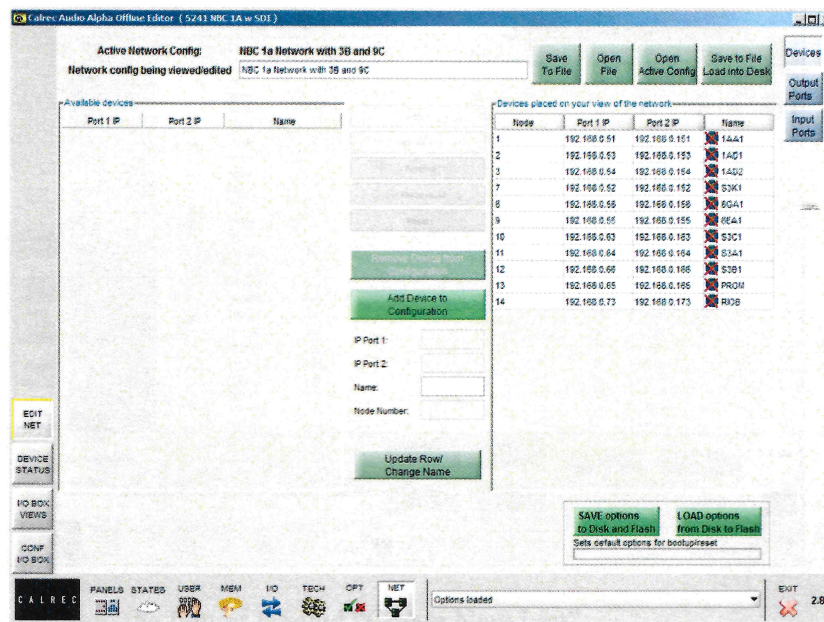
In order to use the new network configuration, which includes your new I/O box, you must first load the new network configuration into the console.

## SCI Calrec Tech Memo – Using Main Application to add new Hydra I/O box

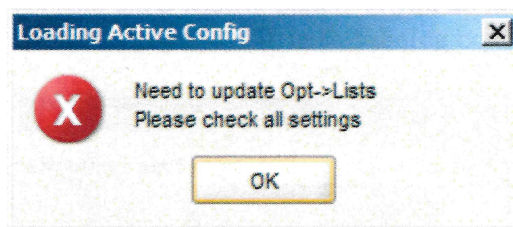
You may overwrite your old network configuration or you may save a new network configuration with a different name and then load it into the console.

To save a new network configuration, tab or click into the WHT field at the top and center of the screen called “Network config being viewed/edited”. You may change the name of your current network configuration.

Once you have changed the network configuration name, click on the RED button in the upper right corner of the screen labeled “Save to File, Load into Desk”.



You will see a pop-up dialog box to remind you to allocate your new ports to new or existing lists.





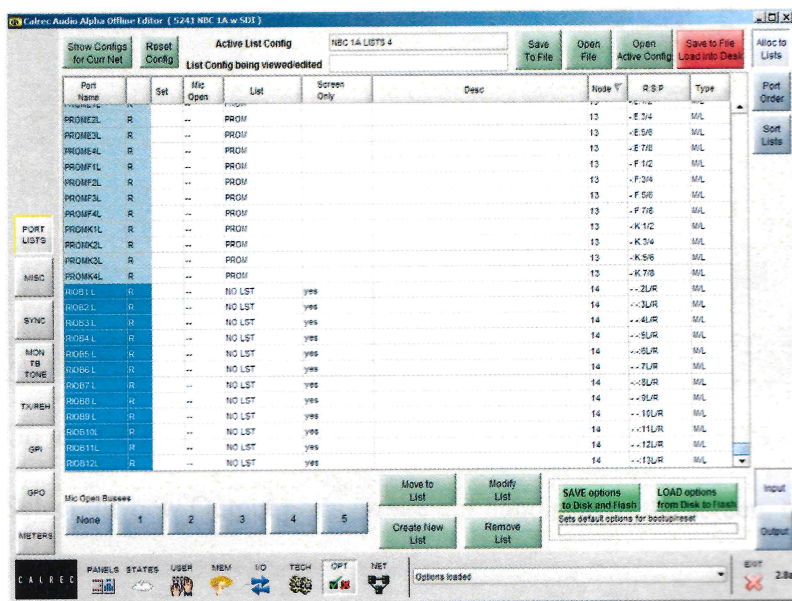
## SCI Calrec Tech Memo – Using Main Application to add new Hydra I/O box

Go to: OPT \ PORT LISTS \ ALLOC TO LISTS

The new I/O box's Ports must be assigned to new or existing I/O Lists.  
By default, new I/O boxes are assigned to "No Lst". You must "Move to List" or "Create New List" to assign the new I/O ports to lists.

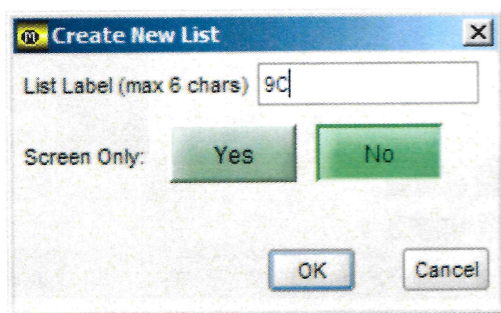
Go to: OPT \ PORT LISTS \ ALLOC TO LISTS \ INPUTS

Select the new Input ports on the left hand side of the screen, highlighted in BLU.



Click on the button labeled "Create New List".

A pop-up dialog box will appear. Give the list a name. List Names are limited to 4 characters. Lists will appear on the PC screen in the Main Application as well as on the console's I/O Matrix panel. If you do not want the list to appear on the console, select "Screen Only – YES" in this dialog box.



Click "OK".

You will see that the ports are now assigned to the port list you just created.



Calver: Audio Alpha Online Editor ( 5/24/2013 1:45:50 )

Show Configs for Curr File

Reset Config

Active List Config

NBC 14 LISTS 4

Save To File

Open File

Open Active Config

Save To File Load Into Disk

Align to Lists

List Config being viewed/edited

Port Name	Set	Mic Open	List	Screen Only	Desc	Noise T	RSP	Type	Port Order
S3B1J2L	R	--	S3B1			12	-2.34	LN	
S3B1J3L	R	--	S3B1			12	-2.56	LN	
S3B1J4L	R	--	S3B1			12	-2.76	LN	
PR0MG1L	R	--	PR0M			13	-0.14	LN	
PR0MG2L	R	--	PR0M			13	-0.34	LN	
PR0MG3L	R	--	PR0M			13	-0.56	LN	
PR0MG4L	R	--	PR0M			13	-0.76	LN	
PR0MH1L	R	--	PR0M			13	-1.12	LN	
PR0MH2L	R	--	PR0M			13	-1.34	LN	
PR0MH3L	R	--	PR0M			13	-1.56	LN	
PR0MH4L	R	--	PR0M			13	-1.76	LN	
PR0MJ1L	R	--	PR0M			13	-2.34	LN	
PR0MJ2L	R	--	PR0M			13	-2.56	LN	
PR0MJ3L	R	--	PR0M			13	-2.76	LN	
PR0MJ4L	R	--	PR0M			13	-2.96	LN	
ROB1L	R	--	NO LST	yes		14	--SLR	LN	
ROB2L	R	--	NO LST	yes		14	--SLR	LN	
ROB3L	R	--	NO LST	yes		14	--SLR	LN	
ROB4L	R	--	NO LST	yes		14	--SLR	LN	

Move to List

Modify List

Create New List

Remove List

SAVE options to Disk and Flash

LOAD options from Disk to Flash

Set default options for backup/reset

Input

Output

PANELS

STATES

USER

MEM

IO

TECH

OPT

NET

Options loaded

EXIT

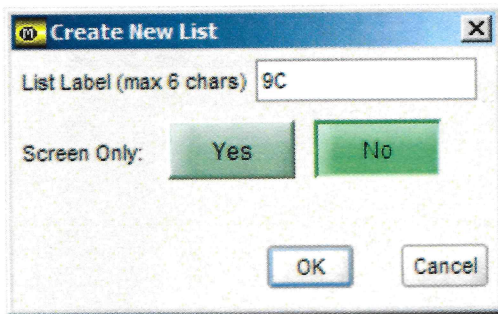
2.86

Support:SCI Tech Memos:Classic Platform:Using Main App to add new Hydra IO.doc  
Last saved by Timothy Casey Tue, Oct 23, 2012



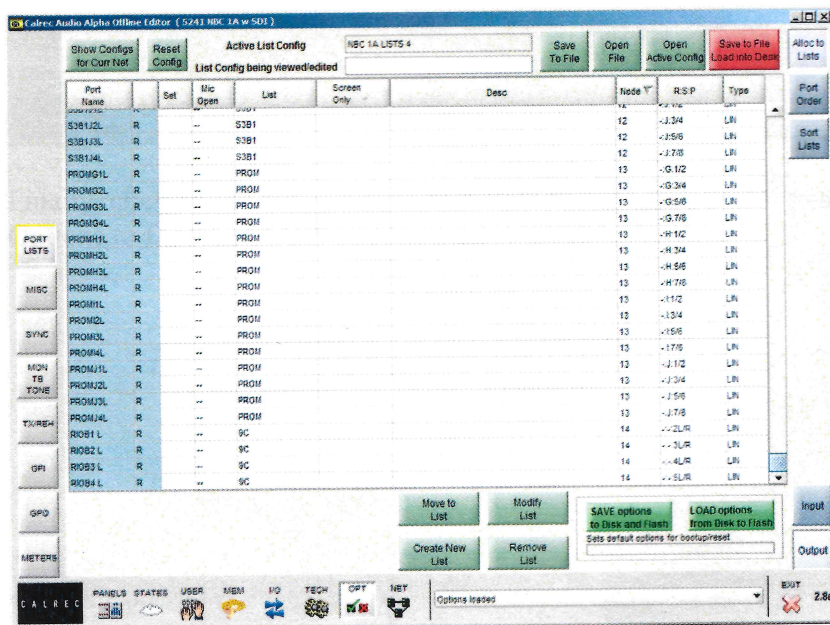
## SCI Calrec Tech Memo – Using Main Application to add new Hydra I/O box

A pop-up dialog box will appear. Give the list a name. List Names are limited to 4 characters. Lists will appear on the PC screen in the Main Application as well as on the console's I/O Matrix panel. If you do not want the list to appear on the console, select "Screen Only – YES" in this dialog box.



Click "OK".

You will see the ports are now assigned to the port list you just created.



With all port lists defined and ports assigned to lists, save the port file and send the changes to the console. You may overwrite the existing Lists file or save a new Ports List file.

To save a new Ports List, tab into or click into the WHT field at the top of the page labeled “List Config being viewed/edited”. Type in a new Ports List file name, then click on the RED button in the upper right side of the page labeled “Save to File, Load into Desk”.

