

CONSOLE PROCESSOR OPTIONS UPDATE

READ BEFORE INSTALLING

This process must be done while console is offline/idle. This programming process can take up to 30 minutes to complete, so sufficient time should be allowed.

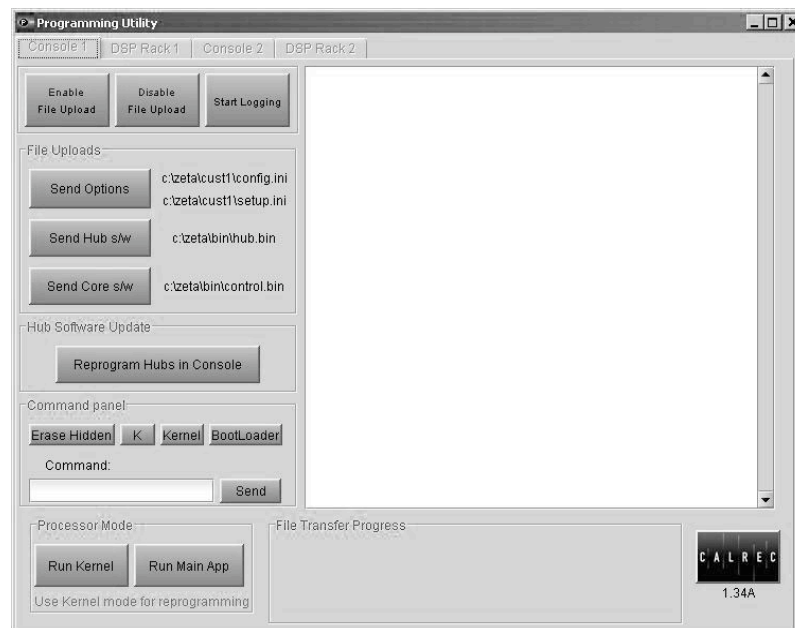
This process must be performed anytime changes are made using the Setup Application. This includes changes to Local Port Labels, or the Misc. Monitor configurations.

NOTE: Be absolutely sure that all working memories and a copy of the Default Setup have been backed up to the console PC.

Quit the Main Application.

Launch the Programming Utility and **ENABLE FILE UPLOAD**

Username: calrecservice Password: calrecservice



1. Select the **CONSOLE1** tab and select **RUN KERNEL** for reprogramming.
(The window on the right displays the Bootloader & Kernel Info. This confirms you are communicating with the processor.)
2. Under File Uploads, select **SEND OPTIONS**. The file config.bin will be converted and transferred to the processor. Wait for a Completed message.
3. Select the **CONSOLE2** tab and select **RUN KERNEL**.
(The window on the right displays the Bootloader & Kernel Info. This confirms you are communicating with the processor.)
4. Under File Uploads, select **SEND OPTIONS**. Wait for a Completed message.
5. Select the **DSP RACK1** tab and select **RUN KERNEL**.
(The window on the right displays the Bootloader & Kernel Info. This confirms you are communicating with the processor.)
6. Under File Uploads, select **SEND OPTIONS**. Wait for a Completed message.

7. Select the **DSP RACK2** tab and select **RUN KERNEL**.
(The window on the right displays the Bootloader & Kernel Info. This confirms you are communicating with the processor.)
8. Under File Uploads, select **SEND OPTIONS**. Wait for a Completed message.
9. Now perform a **CONSOLE RESET** to return to normal operations. The console will reboot to the Primary Processor, and the Secondary will be offline spare. All operations should be normal.
10. Now perform a **RACK RESET** to return to normal operations. The Processing Rack will reboot to the Primary Processor, and the Secondary will be offline spare. All operations should be normal.

Any questions, call Studio Consultants at 212-586-7376.