



# IPDirector IPLogger

Version 8.03 | May 2023

**Corporate**  
+32 4 361 7000

**North & Latin America**  
+1 973 575 7811

**Asia & Pacific**  
+852 2914 2501

**Other regional offices**  
[evs.com/contact/offices](https://evs.com/contact/offices)

→ [evs.com](https://evs.com)



# Disclaimer

This manual and the information contained herein are the sole property of EVS Broadcast Equipment SA and/or its affiliates (EVS) and are provided “as is” without any expressed or implied warranties, including, but not limited to, the implied warranties of merchantability and fitness for a particular purpose. In particular, EVS makes no warranty regarding the use or the consequences of use of this manual and the information contained herein. Furthermore, EVS may not be held liable for any direct or indirect, incidental, punitive or consequential loss, damage, cost or expense of any kind whatsoever and howsoever resulting from the normal or abnormal use of this manual and the information contained herein, even if advised of the possibility of such loss, damage, cost or expense.

While every effort has been made to ensure that the information contained in this manual is accurate, up-to-date and reliable, EVS cannot be held liable for inaccuracies or errors that may appear in this publication. The information in this manual is furnished for informational purpose and use only and subject to change without notice.

This manual cancels and replaces any previous versions thereof.

## Copyright

**Copyright © 2003-2023 EVS Broadcast Equipment SA. All rights reserved.**

This manual may not be reproduced, transcribed, stored (in a database or a retrieval system), translated into any language, computer language, transmitted in any form or by any means – electronically, mechanically, printed, photocopied, optically, manually or otherwise – in whole or in part without the prior written consent of EVS.

## Trademarks

All product and brand names are registered trademarks and trademarks of EVS or of their respective owners.

## Improvement Requests

Your comments will help us improve the quality of the user documentation. Please send improvement requests, or report any error or inaccuracy on this user manual by e-mail to [doc@evs.com](mailto:doc@evs.com).

## Regional Contacts

You will find the full list of addresses and phone numbers on the following webpage: <https://evs.com/contact/offices>.

## User Manuals on EVS Website

The latest version of the user manual and other EVS product documentation can be found on the EVS documentation portal. The documentation portal can be accessed through the VIA Portal on the following webpage: <https://viaportal.evs.com/>.



# Contents

<b>Disclaimer</b>	<b>I</b>
<b>Contents</b>	<b>III</b>
<b>What's New?</b>	<b>VII</b>
<b>1. Introduction</b>	<b>1</b>
1.1. Product Overview	1
1.2. Opening of IPLogger	1
<b>2. Touring the IPLogger User Interface</b>	<b>2</b>
2.1. Overview of the IPLogger Window	2
2.2. IPLogger Toolbar	3
2.3. Logging Areas	6
2.4. Logs Grid	7
2.4.1. Logs Display	7
2.4.2. Log Keywords and Profile Metadata Values	8
2.4.3. Managing the Logs Grid View	10
2.4.4. Log Entry Contextual Menu	13
<b>3. Creating a Logsheet</b>	<b>14</b>
3.1. Introduction	14
3.2. Step 1: Defining the Logsheet Characteristics	15
3.3. Step 2: Defining the Logsheet Keywords	19
3.4. Step 3: Defining the Relevant Recorders	21
3.5. Logsheet Ready For Use	24
<b>4. Adding logs to Media</b>	<b>26</b>
4.1. Introduction	26
4.2. Live Logging	26
4.2.1. Possible Ways to Proceed	26
4.2.2. How to Link Logs to PC Timecode	27






4.2.3. Logging LIVE Action .....	28
4.3. Retroactive Logging .....	31
4.3.1. Context of Use .....	31
4.3.2. Assigning a Player .....	31
4.3.3. Logging a Recorded Clip or Train .....	33
4.3.4. Association Rule Between Clips and Logs .....	35
4.4. Create a New Log Window .....	35
<b>5. Using Keywords and Metadata Profile with Logsheet and Logs .....</b>	<b>38</b>
5.1. Parent Keywords .....	38
5.2. Logsheet User Fields Profile .....	39
5.3. Log Metadata Profile .....	40
5.4. Log Entry Specific Keywords .....	42
<b>6. Protecting Media .....</b>	<b>44</b>
<b>7. Creating Clips Automatically from a Log Entry .....</b>	<b>49</b>
<b>8. Editing and Viewing Logs .....</b>	<b>50</b>
<b>9. Refreshing Associations between Logs, Clips and Keywords .....</b>	<b>53</b>
<b>10. Entering a Timecode Offset .....</b>	<b>55</b>
<b>11. De-Activating a Logsheet .....</b>	<b>58</b>
<b>12. Importing and Exporting Logsheet and Logsheet Profile .....</b>	<b>59</b>
<b>13. Publishing Logs and Logsheets .....</b>	<b>63</b>
<b>14. Printing a Logsheet .....</b>	<b>65</b>
<b>15. Managing Logsheets from the Logsheet Manager Tool .....</b>	<b>67</b>
15.1. Logsheet Manager Tool .....	67
15.2. Creating a Logsheet Directory .....	69
15.3. Moving a Logsheet or a Log Directory in Another Directory .....	70
15.4. Exporting Logsheets .....	73

15.5. Deleting Logsheets .....76

**16. IPLogger Shortcuts .....77**

**17. IPLogger Settings .....79**

ICONOGRAPHY

	Note		Tip		Warning
---	------	---	-----	---	---------





# What's New?

In the User Manual, the icon **NEW !** has been added next to the text to highlight information on new and updated features.

The sections updated to reflect the new and modified features in IPLogger version 8.03 are listed below.

## Logsheet creation

An option allows you to associate a logsheet with a selected ingest rather than record trains. So, logs will only be linked to the selected ingest.

- See section "Step 1: Defining the Logsheet Characteristics" on page 15.

## Quick logging

A setting allows you to quickly create a log by clicking a selected keyword.

- See section "IPLogger Settings" on page 79.
- See section "Logging LIVE Action" on page 28.
- See section "Logging a Recorded Clip or Train" on page 33.

## Log TC synchronization

Options from the Log entry contextual menu linked to TC synchronization have been added or updated for clarity sake.

- See section "Log Entry Contextual Menu" on page 13.



# 1. Introduction

## 1.1. Product Overview

A log is a reference point to a specific frame in a video sequence. The log is identified by a TC value, and relates to an action in a given event.

Adding logs to media is particularly useful to easily and quickly retrieve the interesting moments of the recorded sequences.

Logs are related to a logsheet which is created for a given event and contains its own metadata, previously defined in a logsheet profile.

Users have the possibility to create log entries directly during the event, or later on.

When logging LIVE actions, logs must be entered as soon as the action occurs to grab the timecode corresponding to the action. This is called the LIVE logging hereafter.

When logging actions later on, on a previously recorded clip, users can move through the recorded clip. This is called the comfortable logging hereafter.

Log creation buttons and shortcuts are available to quickly add logs to a media. Users can associate metadata to the log, such as keywords, interest level, highlight color or a description.

Clips containing the log timecode can be created by the users to protect the logged media or can be automatically detected by the system and associated with the log entries.

IPLogger does not interfere with, but complements a live production, while also producing invaluable data for use of the material during or after the event.

Compared to conventional logging techniques, IP Logger has significant time-saving benefits, and saving time is always critical in live production. By producing accurate logs, and providing an efficient search engine, information is available faster to all EVS XNet users for browsing, editing and archiving. Logs can be accessed by other users even while they are being generated, and EVS media associated with the log can be cued and used instantly.

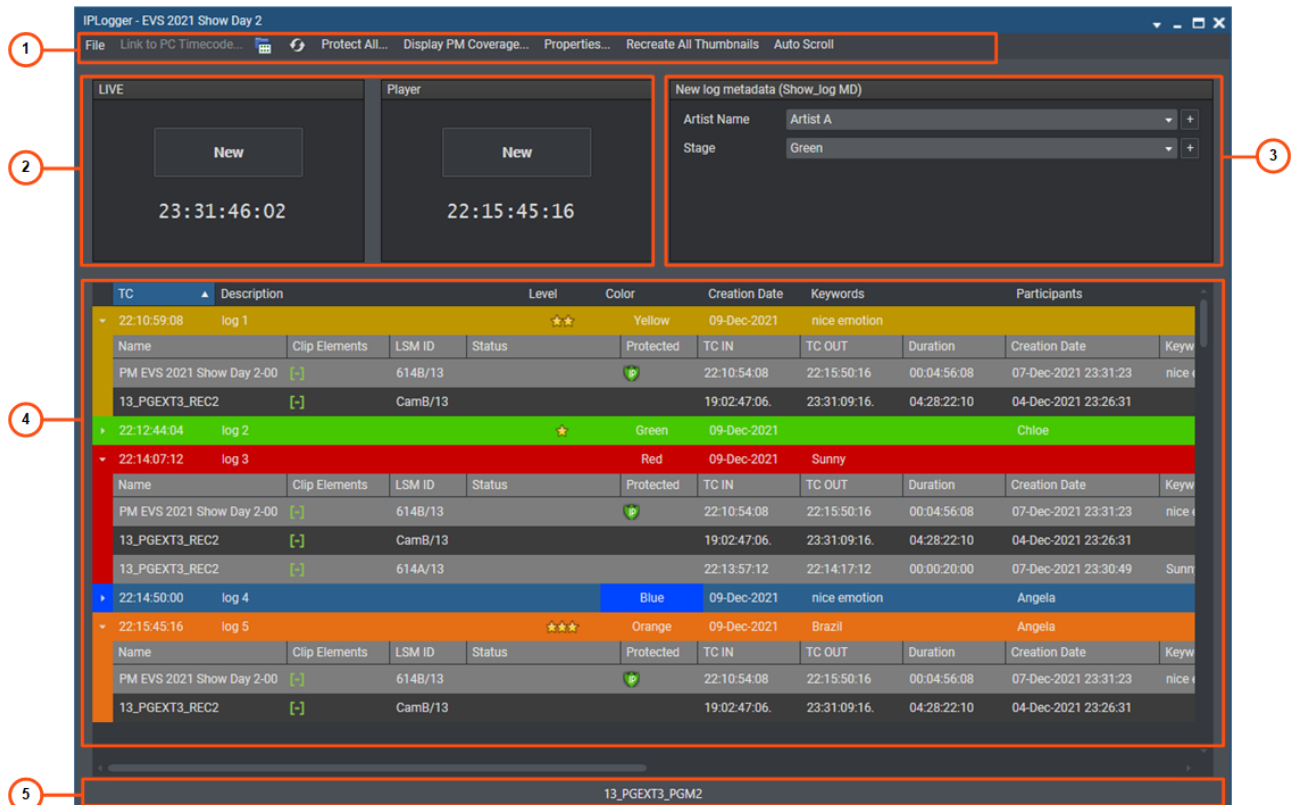
## 1.2. Opening of IPLogger

To open IPLogger, select the corresponding icon  on the IPDirector Application bar. The IPLogger window will open.

## 2. Touring the IPLogger User Interface

### 2.1. Overview of the IPLogger Window

The IPLogger window contains the areas highlighted on the screenshot below:



From version 8.0, the interface skin has changed, so the color shade of some user interface elements (such as title bar, buttons) may differ from the screenshots included in the current manual.

#### Toolbar (1)

The Toolbar provides functions for performing operations on logsheets and buttons mainly for viewing options.

See section "IPLogger Toolbar" on page 3.

#### Logging areas (2)

The Logging areas are used to log events.

See sections "Logging Areas" on page 6 and "Adding logs to Media" on page 26.

### Log Metadata area (3)

This area allows you to define values for the user fields from the log metadata profile.

This area is only displayed if a profile for log metadata has been associated with the selected logsheet profile.

See sections "Create a New Log Window" on page 35 and "Log Metadata Profile" on page 40.

### Logs grid (4)

This area displays all log entries in columns.

See section "Logs Grid" on page 7.

### Associated Channel zone (5)

This area provides information regarding the associated player channel, if any.

When no channel is associated with IPLogger, **No Channel** is displayed.

See section "Assigning a Player" on page 31 for more information on how to assign a player channel.

If the selected player channel is connected to an IN port of a video router, itself associated with OUT ports, the name of the router OUT port(s) is displayed after the player channel name.

## 2.2. IPLogger Toolbar

### File Menu

Clicking the **File** button displays the File menu.

The various menu items in the File menu are detailed in the table below:

Menu Item	Description
<b>New Logsheet</b>	Opens the Create a New Logsheet Wizard window to create a new logsheet. The logsheet creation process is described in detail in "Creating a Logsheet" on page 14.
<b>Open Logsheet</b>	Opens the Open a Logsheet window which provides the list of existing logsheets.
<b>Import</b>	Allows the users to import a logsheet. See section "Importing and Exporting Logsheet and Logsheet Profile" on page 59.
<b>Export</b>	Allows the users to export a logsheet or a logsheet profile. See section "Importing and Exporting Logsheet and Logsheet Profile" on page 59.



Menu Item	Description
<b>Publish logsheet</b>	Opens the Publish a Logsheet window from which the selected logsheet can be published, i.e. made available to selected groups of users, or to selected individual users.  See section "Publishing Logs and Logsheets" on page 63.
<b>Enter TC Offset</b>	Opens the Enter Logsheet Offset window from which you can set a timecode offset when logs and clips are created on different machines, with different timecode values.  See section "Entering a Timecode Offset" on page 55.
<b>Properties</b>	Opens the Update a Logsheet Wizard to check or update the information previously entered.  You can also click the <b>Properties</b> button on the toolbar.
<b>Print</b>	Opens the Print Logsheet window and allows the users to print the logsheet.  See section "Printing a Logsheet" on page 65.
<b>De-active logsheet</b>	Deactivates a logsheet. This can be done when it is completed to improve the performance of the system. Once de-activated, a logsheet cannot be modified and cannot be associated with clips. This permits to reduce the network load and database activity.  See section "De-Activating a Logsheet" on page 58.
<b>Re-active logsheet</b>	Re-activates a logsheet which has previously been de-activated.  See section "De-Activating a Logsheet" on page 58.
<b>Exit IPLogger</b>	Closes the IPLogger window.

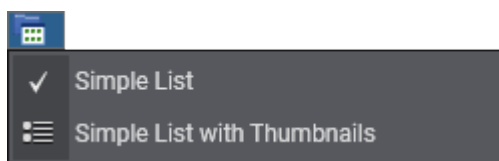
## Link to PC Timecode Button

When, for example, you want to log an event with just a laptop in a hotel room, watching the event on a regular TV set, you can use the PC time as the timecode for the logs.

See section "How to Link Logs to PC Timecode" on page 27.

## View Button

Clicking the **View** button provides a menu listing two display options for the log entries within the grid.



### Simple List

With the **Simple List** option, log entries are shown as text-only narrow lines.

TC	Description	Level	Color	Creation Date	Keywords
▶ 03:12:08:15	1	★	Yellow	08-Dec-2021	Sunny
▶ 03:19:49:14	2	★★	Green	08-Dec-2021	nice emotion
▶ 03:24:44:05	3	★★★	Red	08-Dec-2021	EVS Show
▶ 03:31:52:07	4		Orange	08-Dec-2021	

## Simple List with Thumbnails

With the **Simple List with Thumbnails** option, log entries are shown with a thumbnail, making the entries easier to identify. The thumbnails are created automatically, based on the log entry timecode.

In the collapsed view, the thumbnail matches the image recorded from the Preview recorder's TC for each log entry.

Thumbnail	TC	Description	Level	Color	Creation Date	Keywords
▶ 	03:12:08:15	1	★	Yellow	08-Dec-2021	Sunny
▶ 	03:19:49:14	2	★★	Green	08-Dec-2021	nice emotion
▶ 	03:24:44:05	3	★★★	Red	08-Dec-2021	EVS Show
▶ 	03:31:52:07	4		Orange	08-Dec-2021	

They can be changed to show a different image. If you want to change the thumbnail, right-click the log entry, click **Grab Thumbnail on Recorder** and select a recorder.

In the expanded view, a thumbnail is displayed for each recorder channel.

## Refresh Button

Clicking the **Refresh** button  performs a refresh on the Logsheet grid.

## Protect All Button

Using the **Protect All** command from the Toolbar will create a clip, on each recorder channel selected from the list of relevant recorders, to ensure that A/V material corresponding to all events logged is kept within a clip.

See section "Protecting Media" on page 44.

## Display PM Coverage Button

Clicking the **Display PM Coverage** button on the Toolbar opens the Protect Media Coverage window. You can check here whether all the relevant media is protected.

See section "Protecting Media" on page 44.



## Properties

Clicking the **Properties** button on the toolbar opens the Update a Logsheet Wizard window. The properties entered at logsheet creation are displayed and can be edited from this window.

## Recreate all Thumbnails Button

A thumbnail is automatically generated on the preview recorder. If needed, all thumbnails can be re-generated for a logsheet by clicking the **Recreate All Thumbnails** button.

## Auto Scroll Button

This option is used to make the log, just created by any user, visible in the Logs grid, even if the log is inserted in a part of the grid previously not visible.

When the mode is enabled, the system scrolls the grid to make the last created log visible, would it be created by you or by any other user of the logsheet.

When the mode is disabled, the system scrolls the grid only to make your own log visible.

The Auto Scroll mode is enabled or disabled by clicking the **Auto Scroll** button. When enabled, the button background becomes highlighted.

## 2.3. Logging Areas

### Logging Buttons

The **New** button from the LIVE area is used when you log live actions. See section "Live Logging" on page 26.

The **New** button from the Player area is used when you log actions from events recorded earlier. In this case a player channel must be associated with IPLogger to preview the recorded event. See section "Retroactive Logging" on page 31.

### Timecode Fields Display

Information displayed in the **Timecode** fields from the Live Logging area and from the Player Logging area can be changed as follows:

1. Right-click the **Timecode** field.

A contextual menu with the following options is displayed:

- Timecode
- Timecode and Date

2. Select one of the options.



3. When the date is displayed, clicking it in the **Timecode** field opens a calendar for date selection.

## 2.4. Logs Grid

### 2.4.1. Logs Display

#### Introduction

The Logs grid represents the logsheet content, with one row representing one log and a customizable set of columns to display log data.

The view can be expanded thanks to a small arrow at the beginning of each line. Different kinds of elements can be displayed on separate lines.

#### Log Entries

A log has been created on each relevant recorder channel defined at the logsheet creation.

See section "Step 3: Defining the Relevant Recorders" on page 21, and section "Adding logs to Media" on page 26.

This displays as follows in the Elements grid:

03:12:08:15 1 Yellow 08-Dec-2021 Sunny Stadium											
Name	Clip Elements	LSM ID	Status	Protected	TC IN	TC OUT	Duration	Creation Date	Keywords	Participants	
13_PGEXT3_REC1	[-]	CamA/13			22:36:34.21	03:17:46:09	04:41:11:13	04-Dec-2021 23:26:31			
13_PGEXT3_REC2	[-]	CamB/13			22:36:26:13	03:17:46:09	04:41:19:21	04-Dec-2021 23:26:31			
13_PGEXT3_REC3	[-]	CamC/13			22:32:45:09	03:17:46:09	04:45:01:00	04-Dec-2021 23:26:31			

#### Clips Created Automatically

The log has been dragged into a bin or a specific bin for automatic clip creation had been selected in the associated logsheet. So, a clip has been automatically created by the system.

The clip duration depends on the **Automatic Clip creation based on Logs** setting, defined under **Tools > Settings > Clips > General**.

03:19:49:14 2 Green 08-Dec-2021 nice emotion Stadium											
Name	Clip Elements	LSM ID	Status	Protected	TC IN	TC OUT	Duration	Creation Date	Keywords	Participants	
13_PGEXT3_REC1	[-]	CamA/13			22:38:58:12	03:20:46:06	04:41:47:18	04-Dec-2021 23:26:31			
13_PGEXT3_REC2	[-]	CamB/13			22:39:36:07	03:20:46:06	04:41:09:23	04-Dec-2021 23:26:31			
13_PGEXT3_REC3	[-]	CamC/13			22:36:12:17	03:20:46:06	04:44:33:13	04-Dec-2021 23:26:31			
13_PGEXT3_REC1	[-]	613C/13			03:19:39:14	03:19:59:14	00:00:20:00	07-Dec-2021 03:20:08	nice emotion		

See section "Creating Clips Automatically from a Log Entry" on page 49.



## Protect Media Clips

A log has been protected by a user, so a clip has been created around the log timecode to protect the A/V material.

See section "Protecting Media" on page 44.

This displays as follows in the Elements grid:

Red 08-Dec-2021 EVS Show Stadium										
Name	Clip Elements	LSM ID	Status	Protected	TC IN	TC OUT	Duration	Creation Date	Keywords	Participants
PM December 2021 Show-00	[i]	613D/13	[i]	[P]	03:12:03.15	03:24:49.05	00:12:45.15	07-Dec-2021 03:28:41	Sunny, nice emotion, EVS Show	
PM December 2021 Show-01	[i]	613E/13	[i]	[P]	03:12:03.15	03:24:49.05	00:12:45.15	07-Dec-2021 03:28:41	Sunny, nice emotion, EVS Show	
PM December 2021 Show-02	[i]	613F/13	[i]	[P]	03:12:03.15	03:24:49.05	00:12:45.15	07-Dec-2021 03:28:41	Sunny, nice emotion, EVS Show	

## Associated Clips

A clip containing a log timecode has been created by a user on the same recorder channel as the log. So, the system has automatically detected it and associated it with the log.

This association is done provided that the **Auto-associate clips to logs** option has been selected in the Remote Installer (**Configure > General**).

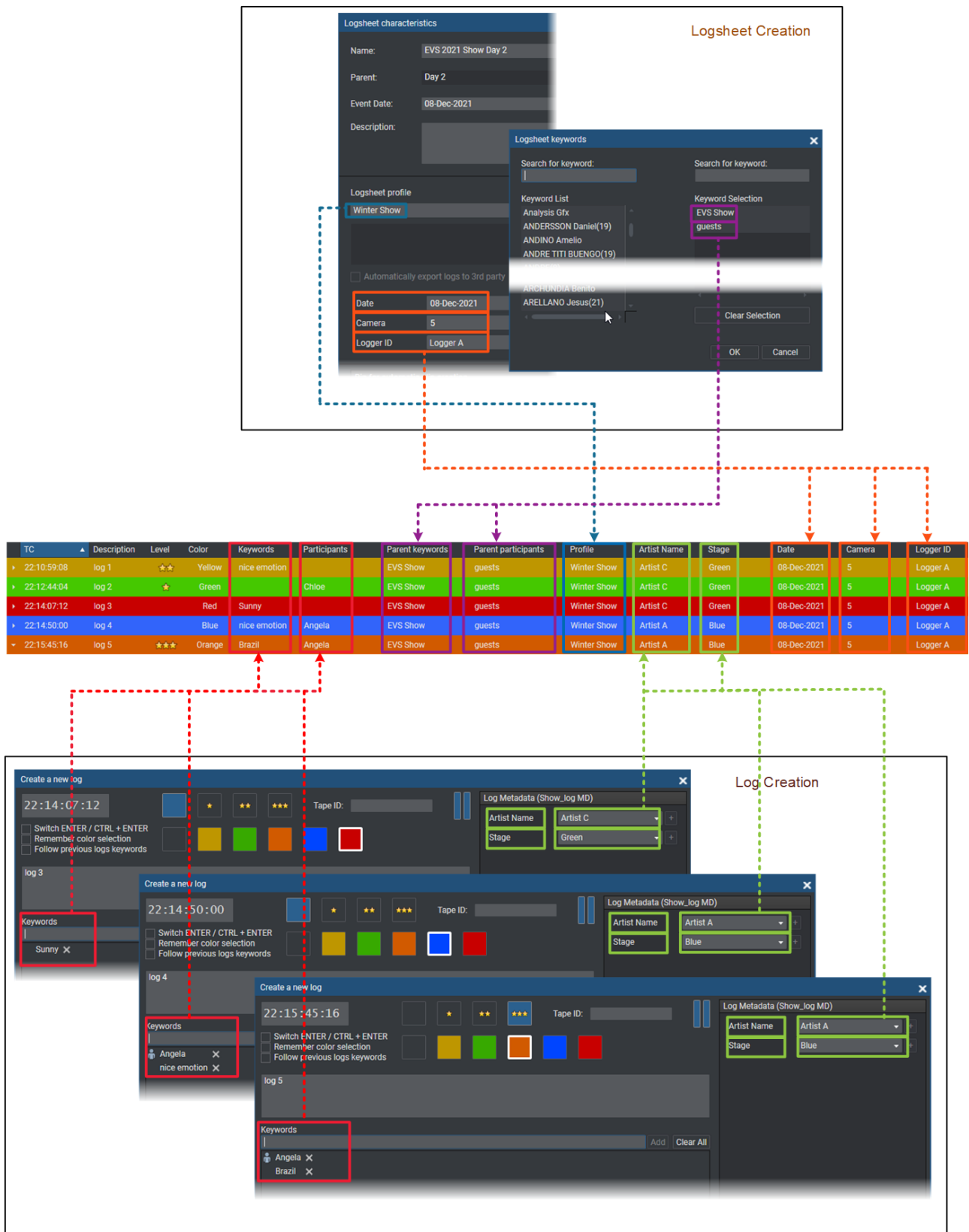
This displays as follows in the Elements grid:

Orange 08-Dec-2021 Stadium										
Name	Clip Elements	LSM ID	Status	Protected	TC IN	TC OUT	Duration	Creation Date	Keywords	Participants
13_PGEXT3_REC1	[i]	CamA/13			22:50:31.04	03:35:16.18	04:44:45.14	04-Dec-2021 23:26:31		
13_PGEXT3_REC2	[i]	CamB/13			22:50:53.15	03:35:16.18	04:44:23.03	04-Dec-2021 23:26:31		
13_PGEXT3_REC3	[i]	CamC/13			22:47:21.20	03:35:16.18	04:47:54.23	04-Dec-2021 23:26:31		
cl_pge_211208a	[i]	613G/13			03:26:04.13	03:34:15.23	00:08:11.10	07-Dec-2021 03:34:47	nice action	Angela

## 2.4.2. Log Keywords and Profile Metadata Values

Some of the columns displayed the keywords assigned to the logsheet or to the log entries and other columns relate to the values entered in the metadata profile user fields, as explained below.

The following schema summarizes the meaning of these columns.



## Keywords

Keywords added to the log from the Create a New Log window.

## Participants

Participant keywords added to the log from the Create a New Log window.



## Parent Keywords

Keywords associated with the logsheet during step 2 of logsheet creation.

## Parent Participants

Participant keywords associated with the logsheet during step 2 of logsheet creation.

## Profile

Name of the logsheet profile associated with the logsheet during step 1 of the logsheet creation.

### [User Fields from the Profile for Logsheets]

At logsheet creation, a logsheet profile can be selected. If a profile for Logsheets User Fields has been associated with this logsheet profile from the Metadata Profile Management window, a column corresponding to each of its user fields is present in the Logs grid.



These columns are not displayed if no logsheet profile is used with the logsheet or if no "Profile for Logsheets User Fields" was present in the logsheet profile.

### [User Fields from the Profile for Log Metadata]

The profile for Log Metadata which is associated with the logsheet profile selected at logsheet creation is made up of a series of user fields. A column corresponding to each user field is present in the Logs grid.



These columns are not displayed if no logsheet profile is used with the logsheet or if no "Profile for log metadata" is associated with the logsheet profile.

## 2.4.3. Managing the Logs Grid View

### Grid Header Contextual Menu

Right-clicking the grid header displays the grid contextual menu.

The options are described in the following table:

Option	Description
Hide	Hides the selected column.
Organize	The Select Columns window opens and allows the users to select the columns to display and their order.
Save grid organization	Saves the organization of the grid as it is displayed (columns selection, order and size). It is saved by each user. Therefore, this organization will be retained the next time the user logs in and opens the application.
Reset grid organization	Sets back the grid to the default grid organization.

## Sorting the Elements in the Grid

At start of the application, items are sorted with most recent on top.

You can change the sort order of elements in the grid by clicking the column header for the parameter according to which you want to sort the elements.

The column header which is used for sorting is highlighted in blue. The little triangle indicates the sorting order. Clicking the column header again changes the sorting order from ascending to descending or vice versa.

## Organizing Columns

Columns can be resized and/or re-ordered. This new organization is automatically saved and remembered. However, it is also possible to reset the column organization to the default organization.

## Resizing Columns

A column can be resized by placing the mouse pointer over columns intersection and dragging it to the right or to the left.



TC	Description	Level	Color	Creation Date	Keywords
03:12:08:15	1	★	Yellow	08-Dec-2021	Sunny
03:19:49:14	2	★★	Green	08-Dec-2021	nice

## Selecting Columns to Display

To select the columns to display in the grid,

1. Right-click the column header area.
2. Select **Organize**.

The Select Columns window opens and the right pane shows the list of columns currently displayed in the current order.

3. To select the column(s) you wish to add to the view, do one of the following actions:
  - in the left pane, double-click the column(s) you wish to add to the view
  - select them in the left pane and click the right arrow
  - drag them onto the Visible Columns area.

Use **CTRL + click** to select a list of non-contiguous columns.

Use **SHIFT + click** to select a list of contiguous columns.



4. To select the column(s) you wish to remove from the view, do one of the following actions:

- on the right pane, double-click the column(s) you wish to remove from the view
- select them on the right pane and click the left arrow
- drag them onto the left pane.

Use **CTRL + click** to select a list of non-contiguous columns.

Use **SHIFT + click** to select a list of contiguous columns.

5. Click **OK**.

## Ordering Columns

To change the columns order, proceed in one of the following ways

- Select a column header and drag it to the left or right to the required place:



OR

1. Right-click the column header area.

2. Select **Organize**.

The Select Columns window opens and the right pane shows the list of columns currently displayed in the current order.

3. Drag the selected column to the required position in the Visible Columns pane.

4. Click **OK**.

## Resetting the List of Columns back to the Default One

Users can reset the list of columns displayed in the grid to the default one.

1. Right-click the column header area.

2. Select **Organize**.

The Select Columns window opens.

3. Click **Back to Default**.

## 2.4.4. Log Entry Contextual Menu

The Log Entry contextual menu is available when right-clicking a log entry from the collapsed view of the grid. It gives access to the actions that can be performed on logs.

### Edit

Opens the Edit a Log window that allows users to modify the log metadata.

You may change some data, such as interest level, color,..., for multiple logs at once: select all the lines to edit and choose the data you want to associate to all of them in the Edit log window.

### View and Edit

Opens the Edit a Log window that allows users to modify the log metadata and loads the log at the log timecode position on the player channel associated with the IPLogger window.

### View

Loads the log on the player channel associated with the IPLogger window.

### Delete

Deletes the selected log entry(ies).

### **NEW !** Offset Logsheet from this log using Player TC

Synchronizes the log timecode of the selected log entry with the timecode of the image loaded on the player and adds on offset to all the other log entries of the logsheet.

This can be used, for example, when the logs and the recordings have been made in different locations or on two different setups.

### **NEW !** Synchronize log with Player TC

Synchronizes the log timecode of the selected log entry with the timecode of the image loaded on the player.

### Grab Thumbnail on Recorder

Manually re-generates the thumbnail on a relevant recorder of user's choice.

### Protect Selected Logs

Allows creating clips for selected logs to ensure the protection of corresponding A/V material.

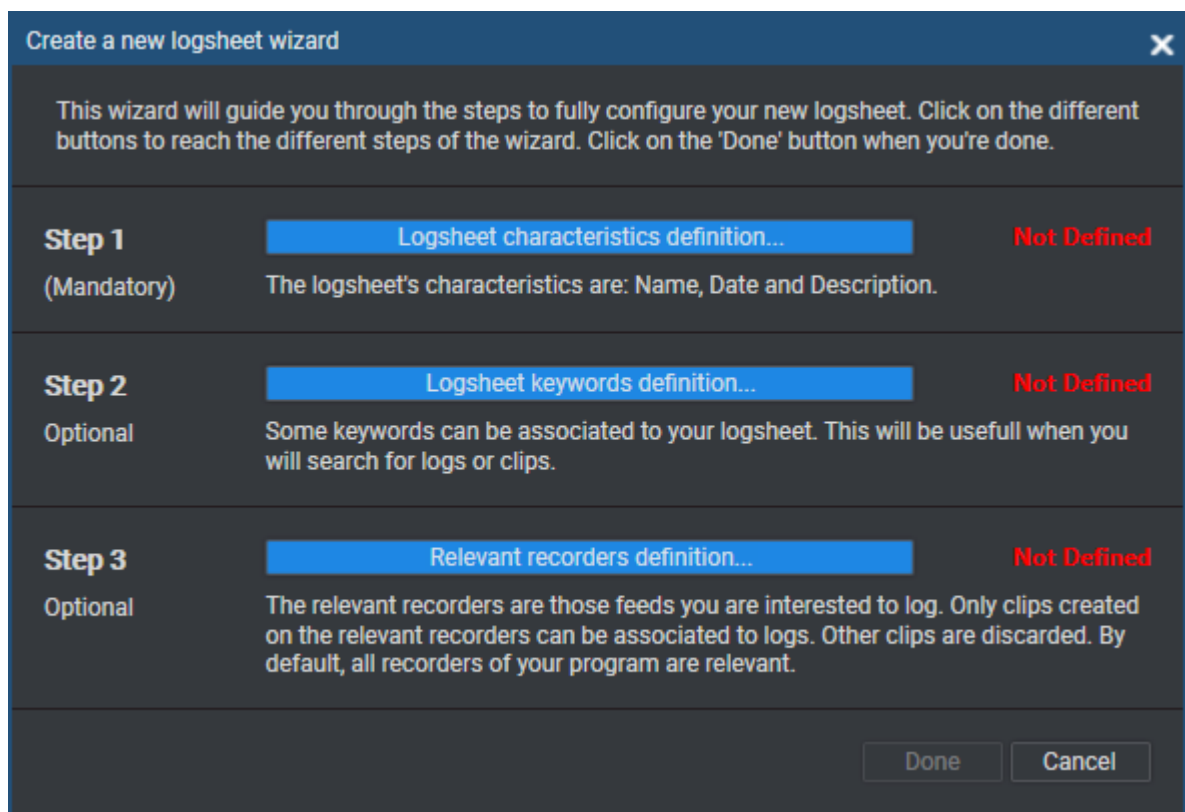


Right-clicking a protect media clip or an associated clip from the expanded view of the log entry in the grid will display the Clip contextual menu.

## 3. Creating a Logsheet

### 3.1. Introduction

To create a new logsheet for an event, click **File > New Logsheet** from the main toolbar. This opens the Create a New Logsheet wizard.



You then have to define the parameters of the logsheet by completing the 3 steps of the wizard:

1. logsheet characteristics
2. logsheet keywords
3. relevant recorders

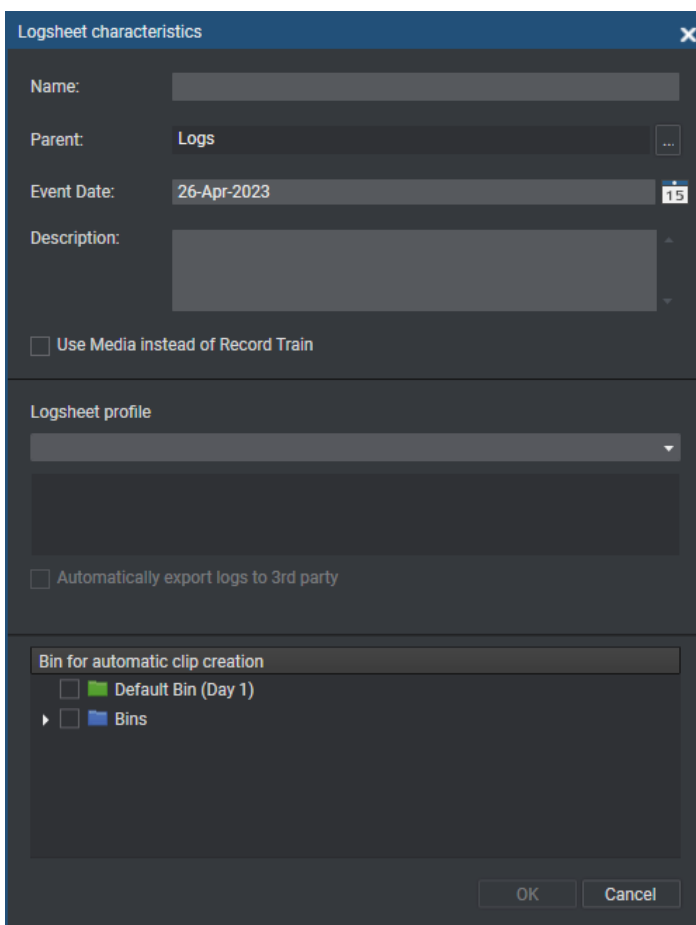
Click the buttons to open the windows for steps 1 to 3.



## 3.2. Step 1: Defining the Logsheet Characteristics

### Accessing the Logsheet Characteristics Window

Click the **Logsheet Characteristics Definition** button in the Create a New Logsheet wizard to display the Logsheet Characteristics window:



The screenshot shows the 'Logsheet characteristics' dialog box. It has a title bar with a close button. The main area contains several fields: 'Name:' with a text input; 'Parent:' with a dropdown menu showing 'Logs' and a selection icon; 'Event Date:' with a date picker showing '26-Apr-2023'; and 'Description:' with a large text area. Below these is a checkbox labeled 'Use Media instead of Record Train'. The 'Logsheet profile' section has a dropdown menu and a checkbox labeled 'Automatically export logs to 3rd party'. The 'Bin for automatic clip creation' section has a list box with two items: 'Default Bin (Day 1)' and 'Bins', each with a checkbox. At the bottom are 'OK' and 'Cancel' buttons.

### Purpose

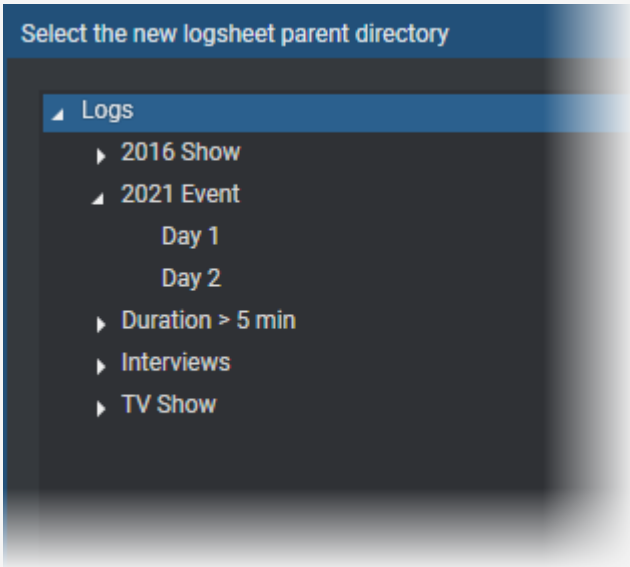
The Logsheet Characteristics window is used to define the main characteristics of the logsheet: name, description, log directory, logsheet profile, values for the associated profile for logsheet, and bin for the automatic creation of clips.


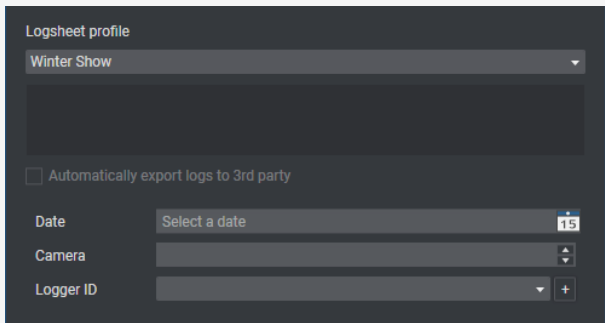


## Fields of the Logsheet Characteristics Window

The fields in the Logsheet Characteristics window are explained in the table below.

Complete at least the mandatory fields and click **OK**. Step 1 will then appears as Defined in the Create a New Logsheet wizard.

User Interface Element	Description
Name	Name of the logsheet.  This is a mandatory field.
Parent	Name of the log directory from the tree structure of the Database Explorer in which the logsheet will be placed.  Browsing in this field displays the folders already created in the Logs section of the Database Explorer, allowing you to select the requested folder:  
Event Date	Date when the logsheet is created or date of the logged event.  This is a mandatory field.
Description	Free text to add a description of the logsheet.  This is an optional field.

User Interface Element	Description
<b>NEW !</b> <b>Use Media instead of Record Train</b>	<p>If this option is selected, when an ingest is associated with a logsheet from Ingest Scheduler, logs created from IPLogger will only be linked to the selected ingests and not to the record trains.</p> <p>Therefore, in case of overlapping ingests, the logs will only refer to the ingest you are interested in and not to all the ingests.</p> <div>  <p>It is checked by default when the <b>Use Media instead of Record Train</b> global setting has been selected from the Remote installer (General &gt; Logsheets Parameters).</p> </div>
<b>Logsheets Profile</b>	<p>The first field displays the name of the selected logsheet profile. The Logsheets profile menu provides the list of available logsheet profiles, set from the Metadata Profiles Management window.</p> <p>The second field gives the description of the selected logsheet profile.</p> <p>See section <a href="#">the General Functions user manual</a>.</p>
<b>Automatically Export Logs to 3rd Party</b>	<p>Check this box to generate an xml file of the logsheet each time it is modified (new log element, relevant recorders modified, etc.). The IPScheduler service will create the xml file and send it to a dedicated folder.</p> <p>The option availability depends on the configuration defined in the Remote Installer (<b>Configure &gt; IPLogger Export</b>).</p> <p>See the IPDirector Technical Reference manual for more information.</p>
<b>[Logsheets Profile User Fields]</b>	<p>As soon as a logsheet profile has been selected, the user fields from the associated <b>Profile for logsheets user fields</b> are displayed.</p> <div>  </div> <p>Values can be specified for all the user fields at the logsheet creation. At this step, values can be defined for text, timecode, date and number user's field types. Additional values can be defined for predefined text values user field type.</p> <p>The user field names can be displayed as columns in the Logs grid of IPLogger.</p>
<b>Bin for the automatic clip creation</b>	<p>If a specific bin has been selected in the logsheet, clips will be automatically created when a log is being created.</p>



Here is an example of a completed Logsheet Characteristics window:

Logsheet characteristics

Name:May 2023 Show

Parent:Day 1

Event Date:16-May-2023

Description:

☐ Use Media instead of Record Train

Logsheet profile

Winter Show

☐ Automatically export logs to 3rd party

Date16-May-2023

Camera2

Logger IDLogger B

Bin for automatic clip creation

☒ Default Bin (Day 1)

☐ Bins

☐ Users Bin

☐ 2016 Show

☐ 2021 Event

☐ C-Cast

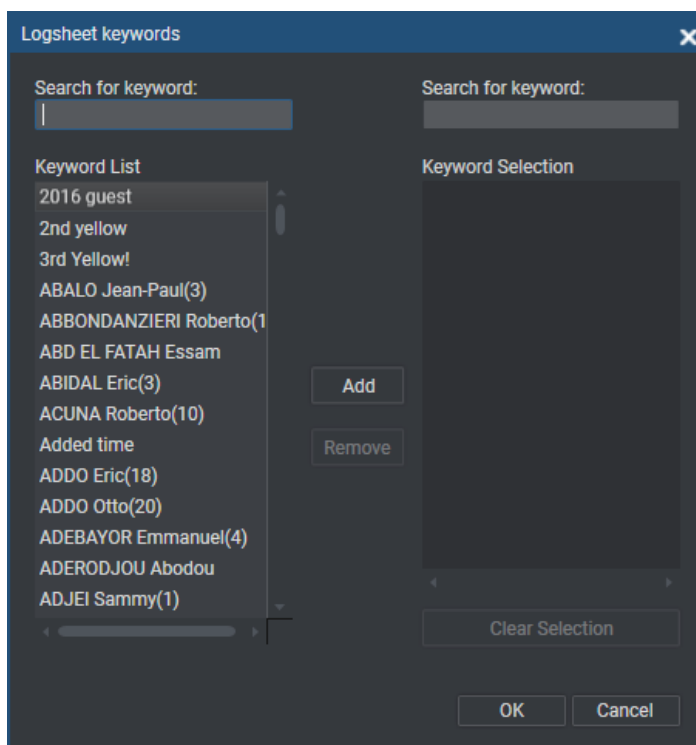
OK

Cancel

## 3.3. Step 2: Defining the Logsheet Keywords

### Accessing the Logsheet Keywords Window

Click the **Logsheet Keywords Definition** button in the Create a New Logsheet wizard to display the Logsheet Keywords window:



### Purpose

The Logsheet Keywords window is used to define keywords which will be associated with the logsheet, and therefore automatically associated with all the log entries of the logsheet.

The keywords associated with the log in this way are called parent keywords as they are defined at the logsheet level, valid for all log entries in the logsheet. Parent keywords that are entered here must therefore be relevant to all events in the logsheet.

### Fields of the Logsheet Keywords Window

The table below describes the Logsheet Keywords Definition window.

Select keywords and click **OK**. Step 2 will then appears as Defined in the Create a New Logsheet wizard.

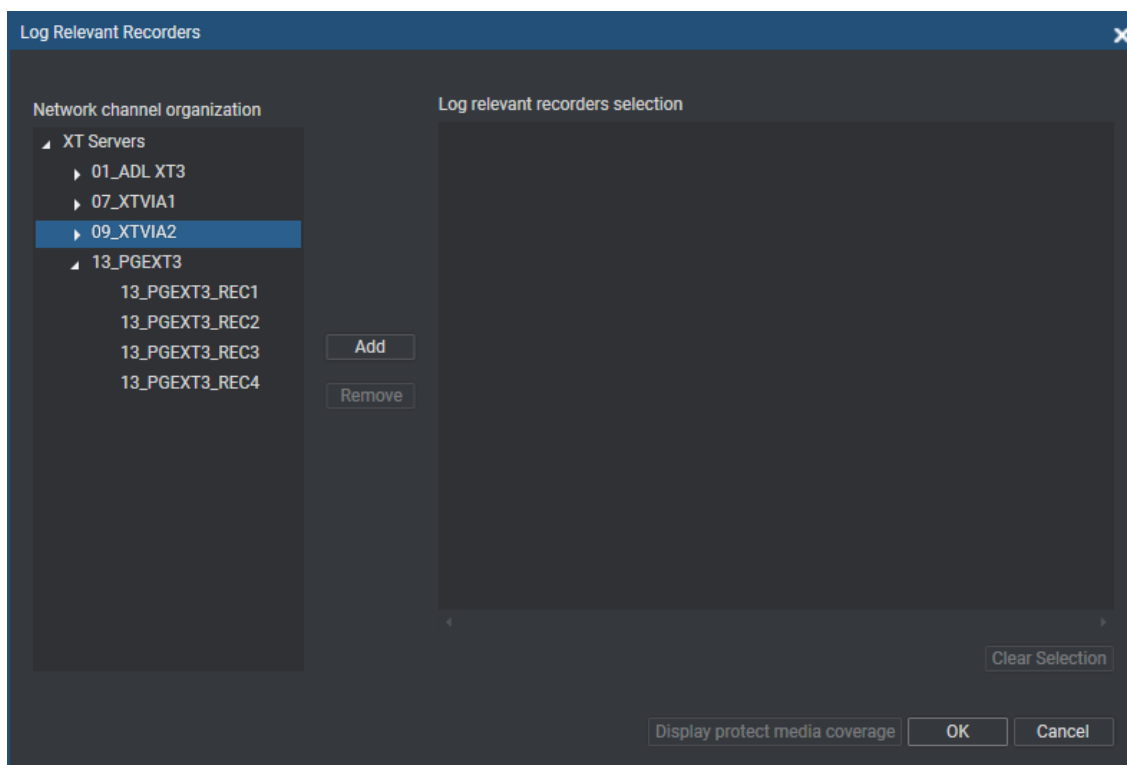


User Interface Element	Description
<b>Search for Keyword (left)</b>	<p>Search for a keyword in the Keyword List box, for example a keyword you would like to add to the logsheet.</p> <p>Type the beginning of the keyword and the first matching keyword in the Keyword List will be highlighted.</p>
<b>Keyword List</b>	Displays all the keywords available in the IPDirector database.
<b>Search for Keyword (right)</b>	<p>Search for a keyword in the Keyword Selection box, for example to check whether this keyword is already in the selection.</p> <p>Type the beginning of the keyword searched for and the first keyword matching the search criteria will be highlighted.</p>
<b>Keyword Selection</b>	Displays the keywords that have been associated with the current logsheet.
<b>Add</b>	Button to add the parent keyword(s) selected in the Keyword List box to the Keyword Selection box.
<b>Remove</b>	Button to remove the selected parent keywords from the Keyword Selection box.
<b>Clear Selection</b>	Button to clear all the keywords from the Keyword Selection box.

## 3.4. Step 3: Defining the Relevant Recorders

### Accessing the Log Relevant Recorders Window

Click the **Relevant Recorders Definition** button in the Create a New Logsheet wizard to display the Log Relevant Recorders window:



### Purpose

The Log Relevant Recorders window is used

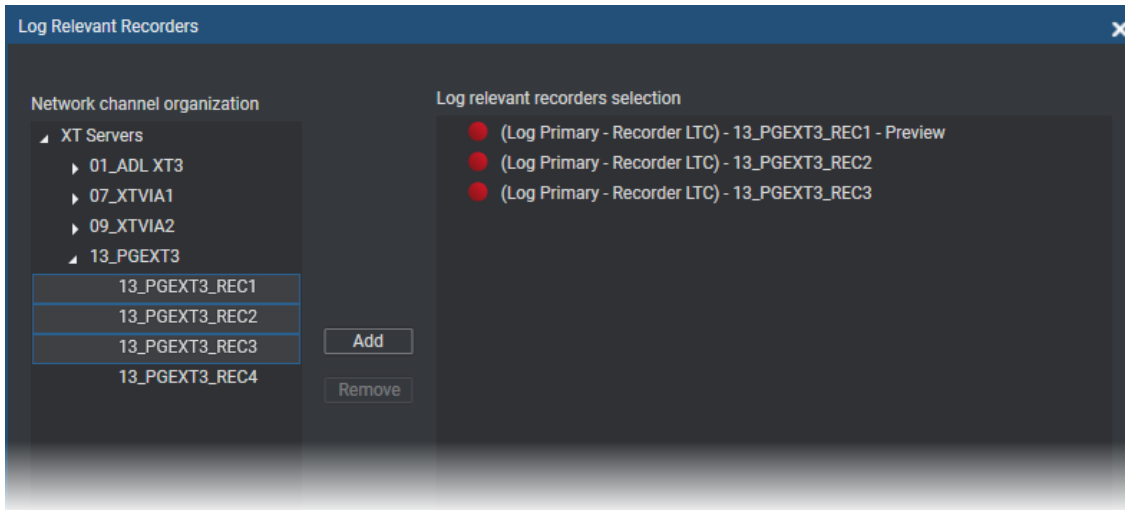
- to define the relevant recorders, which correspond to those feeds you are interested to log: each recorder channel on any EVS video server within the XNet can be defined as a relevant recorder,
- to set a recorder as preview recorder: The preview recorder provides the timecode displayed in the LIVE area of the logsheet. It will also be the first angle selected to view an event when an IPDirector operator loads a log.
- to select the association type between the log timecode and the recorder timecode.



## How to Select the Relevant Recorders

To select the relevant recorders,

1. Select the relevant sources from the Network Channel Organization area.
2. Click **Add**.



If a recorder channel is connected to an OUT port of a video router, itself associated with an IN port, the name of the router IN port is displayed after the recorder channel name in the Log Relevant Recorders window.

## How to Select the Preview Recorder

To define a preview recorder,

1. Right-click the requested recorder channel in the Log Relevant Recorders Selection area.
2. Select **Preview Recorder** from the contextual menu.

**Preview** is written next to the selected recorder.



The preview recorder **MUST** be assigned to a recorder channel that is managed with a RS422 link to the EVS video server the channel is on. If not, the logsheet will NOT function correctly, and no LIVE timecode will be displayed.

## How to Associate the Log and Recorder Timecodes

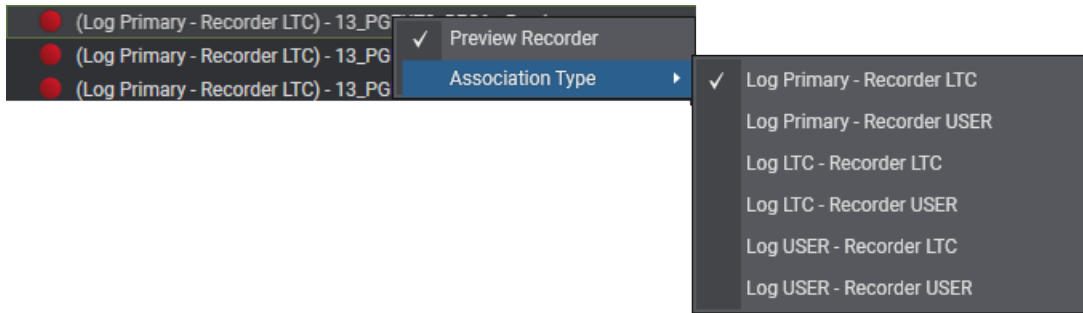
When selecting a relevant recorder, the system will automatically consider the primary table of the logsheet and the recorder as the relevant tables to calculate the clip/log association.

It is however possible to change this association if necessary. To change the association,

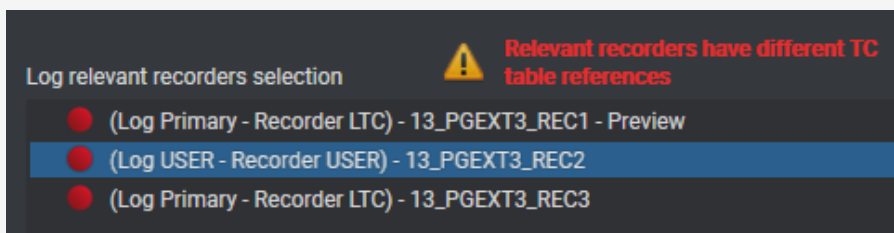
1. Right-click the relevant recorder in the list.



2. Select the desired association type.



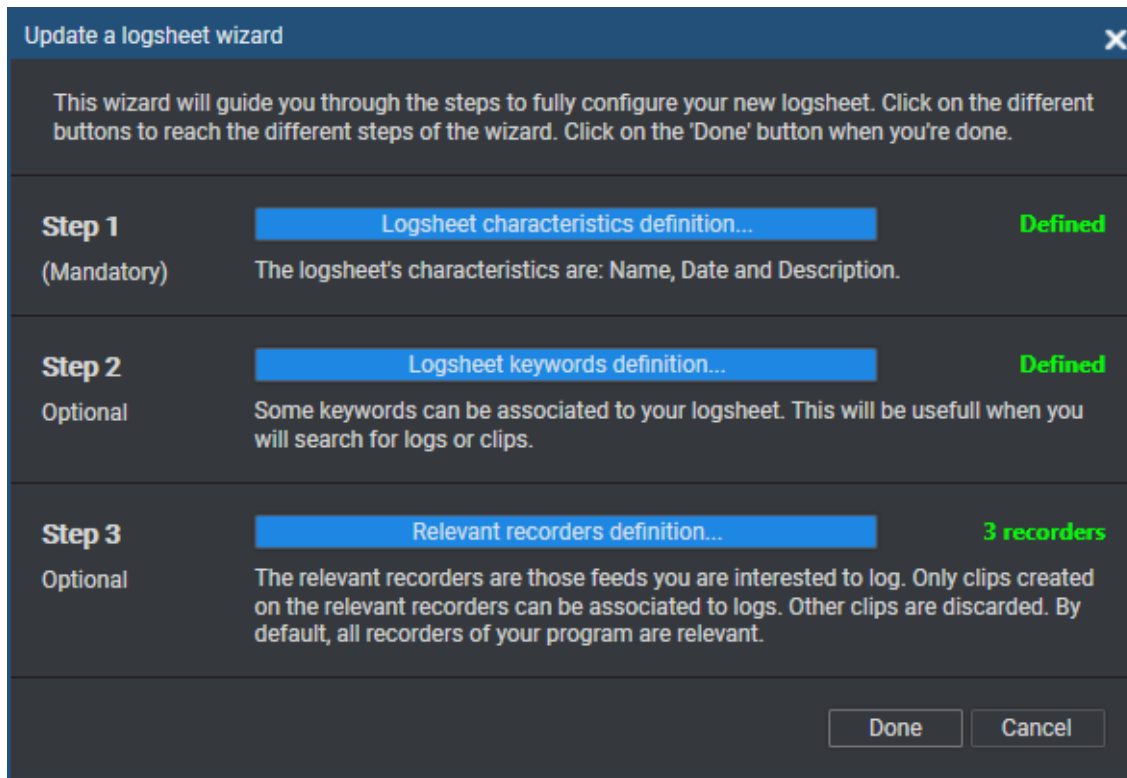
If you have different types of associations in the same logsheet, a warning message is displayed.



This is just a warning which indicates you have different types of association in your logsheet. Check that this scenario (rarely used) corresponds to your workflow.

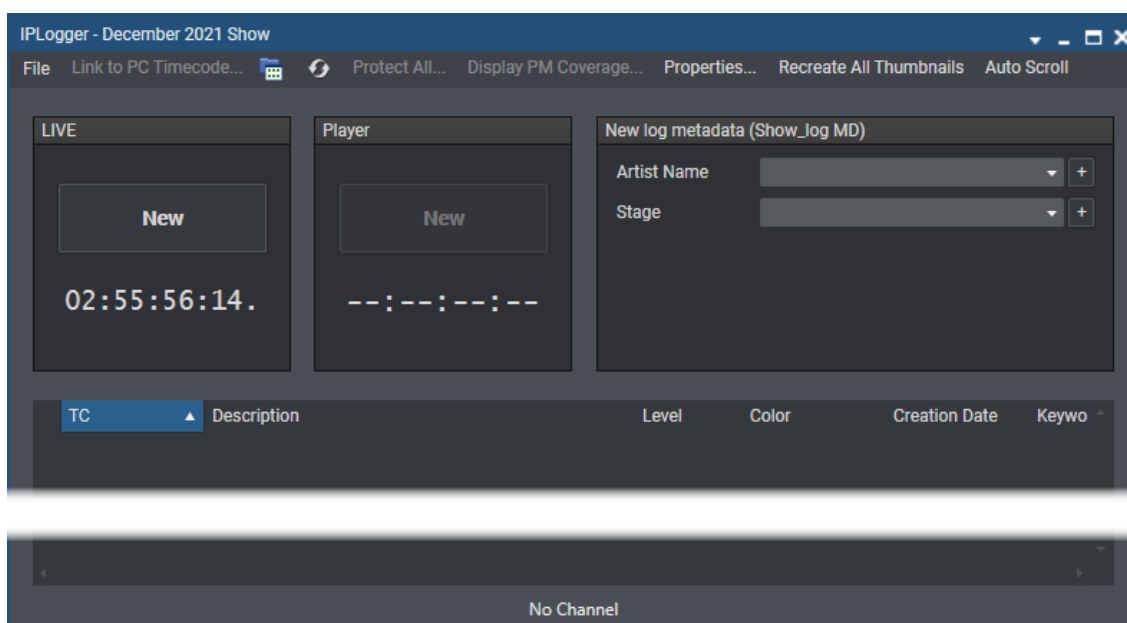
## 3.5. Logsheet Ready For Use

When the wizard is completed, it looks as follows:



Click **Done** at the bottom of the Create a New Logsheet wizard.

The name of the logsheet is shown in the IPLogger window title bar and a running timecode appears in the LIVE area.





If there is no timecode in the LIVE area, this means that the preview recorder belongs to a server with no RS-422 connection to the IPDirector network.



## 4. Adding logs to Media

### 4.1. Introduction

A log is a reference point to a specific frame in a video sequence. The log is identified by a timecode value, and relates to an action in a given event. It can be associated with metadata related to the event (keywords and/or a ranking, for example).

Adding logs to media is particularly useful to easily and quickly retrieve the interesting moments of the recorded sequences.

Users have the possibility to create log entries directly during the event, or later on.

When users log LIVE actions, logs must be entered as soon as the action occurs to grab the timecode corresponding to the action. This is called the LIVE logging hereafter.

When users log actions later on, users can move through the selected media: recorded clip, loaded train. This is called the retroactive logging hereafter.

Log creation buttons and shortcuts are available to add logs to a media, users will have to manually associate metadata to the log, such as keywords, interest level, highlight color or a description.

### 4.2. Live Logging

#### 4.2.1. Possible Ways to Proceed

When users log LIVE actions, logs must be created as soon as the action occurs to grab the timecode corresponding to the action.

Depending on the situations, the Live logging can be done with the timecode of an EVS server recorder channel or with the PC timecode.

- When you work on an IPDirector workstation connected to an EVS video server, you will log with the timecode of the preview recorder.

In this case, you need to first define the relevant recorders and to set the preview recorder channel to be used for logging during the step 3 of the logsheet creation. See section "Step 3: Defining the Relevant Recorders" on page 21.

- You will use the PC time as the timecode for the logs when, for example, you want to log an event with just a laptop in a hotel room, watching the event on a regular TV set.

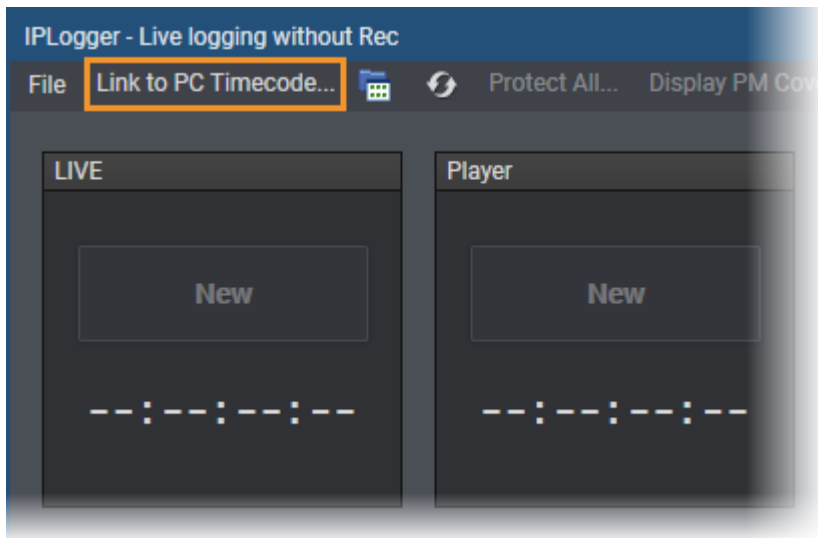
In this case, you will create a logsheet without defining any relevant recorder. Then you will have to link the IPLogger window to the PC timecode, as described in section "How to Link Logs to PC Timecode" on page 27.

This can be done on a train from a Live Session tab or on a train or recording ingest from the Player Session tab.

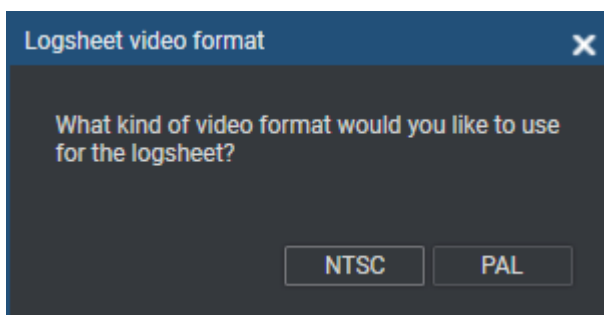
## 4.2.2. How to Link Logs to PC Timecode

To link IPLLogger to the PC timecode,

1. Click the **Link To PC Timecode** button.



The Logsheet Video Format window appears:

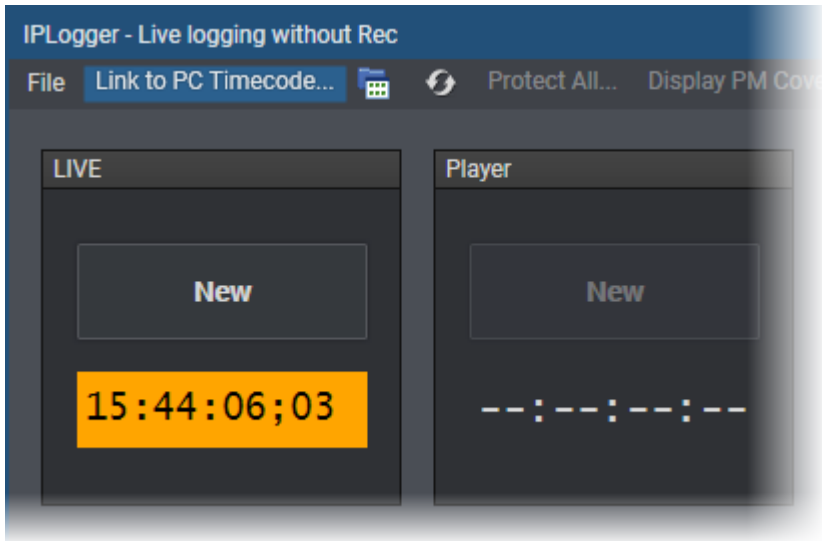


2. Select the appropriate video format.

Your PC timecode appears highlighted in the **LIVE** area and you can start making log entries as described in "Logging LIVE Action" on page 28.



The **Link To PC Timezone** button becomes highlighted.



To un-link logs to PC timecode, click the **Link to PC Timecode** button again.



When a recorder is linked, you will not be able to click the **Link To PC Timecode** button.

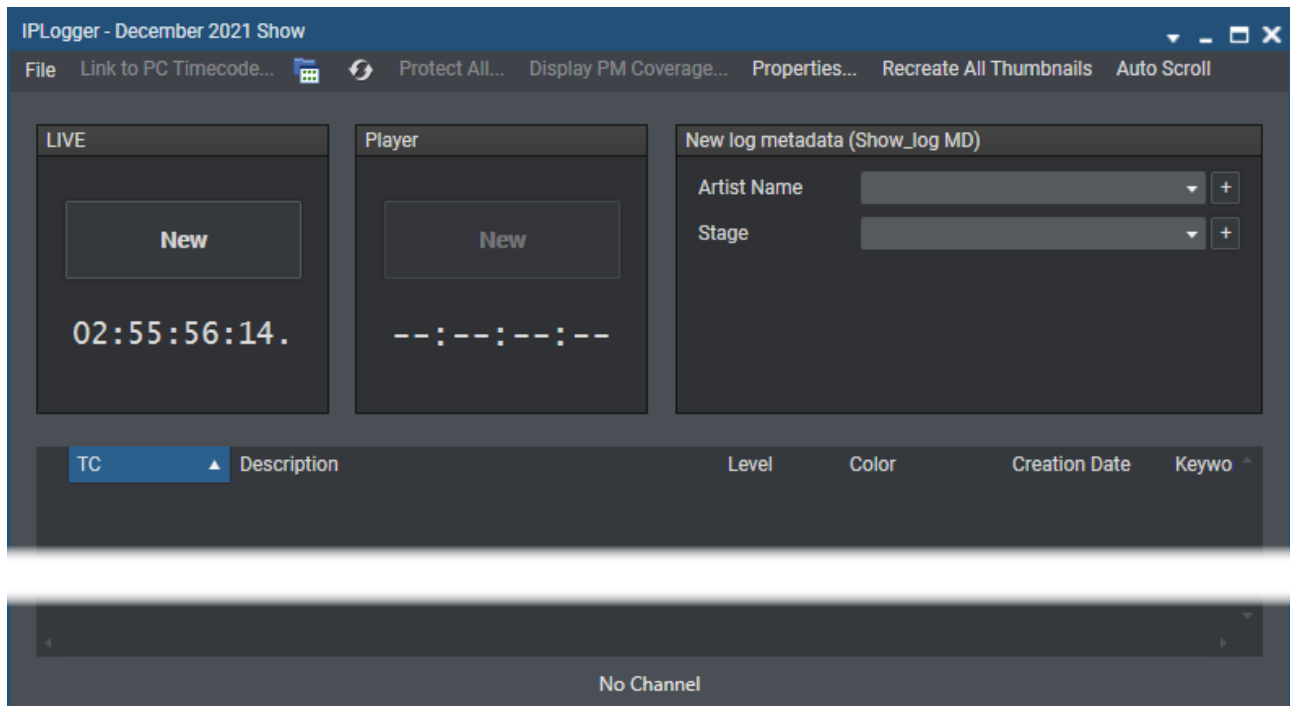
## 4.2.3. Logging LIVE Action

### Prerequisites

#### Logging with Preview Recorder Timecode

Create a logsheet and define the relevant recorder channels and the preview recorder as described in section "Creating a Logsheet" on page 14.

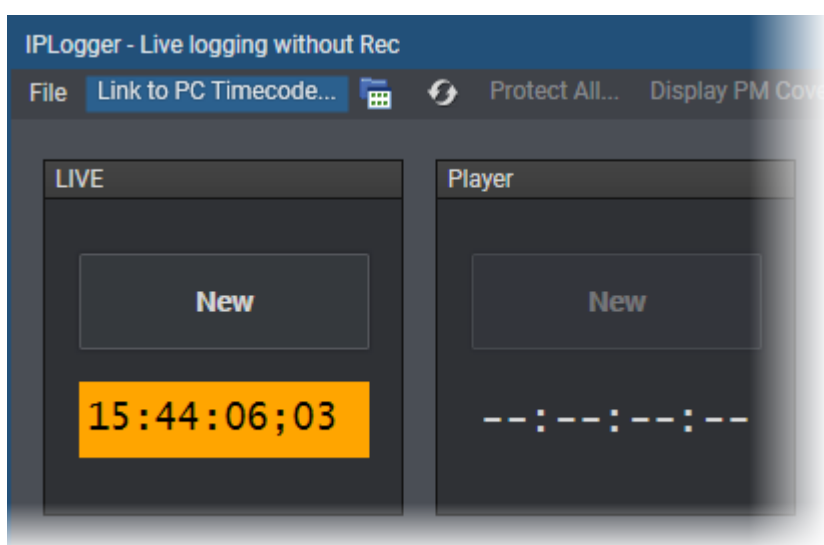
The timecode displayed in the **LIVE** area of the IPLogger window is the timecode of the preview recorder. It is not highlighted.



## Logging with PC Timecode

1. Create a logsheet without defining any relevant recorder channels. See section "Creating a Logsheet" on page 14.
2. Link IPLogger to PC timecode, as described in section "How to Link Logs to PC Timecode" on page 27.

The timecode displayed in the **LIVE** area of the IPLogger window is highlighted to warn the users.





## How to Log LIVE Action

To create a new log entry in a selected logsheet,

1. Open the selected logsheet from **File > Open a logsheet**.
2. (optional) Enter or modify the values in the Log Metadata area:

The dialog box titled "New log metadata (Show\_log MD)" contains two dropdown menus. The first is labeled "Artist Name" and has "Artist A" selected. The second is labeled "Stage" and has "Yellow" selected. Each dropdown has a small "+" button to its right.

3. Click the **New** button in the LIVE area.

The Create a New Log window opens with the timecode grabbed from the preview recorder or from the PC time:

The "Create a new log" window is a complex interface. At the top left, it shows a timecode "03:12:08:15". Below this are checkboxes for "Switch ENTER / CTRL + ENTER", "Remember color selection", and "Follow previous logs keywords". To the right of these are several colored squares (blue, yellow, green, orange, red) and a "Tape ID:" field. A large text area for "Keywords" is at the bottom left, with "Add" and "Clear All" buttons. On the right side, there is a "Log Metadata (Show\_log MD)" panel with "Artist Name" (Artist A) and "Stage" (Yellow) dropdowns. At the bottom right are "INSERT" and "Cancel" buttons.

See section "Create a New Log Window" on page 35 for more information on the fields.

### NEW !



#### Quick Logging

Rather than clicking the **New** button, click a keyword from a keyword grid or dictionary. This opens the Create a New Log window with the timecode grabbed from the preview recorder or from the PC time and with the selected keyword.

The **Enable Quick Logging** setting must have been selected from the IPLogger settings.

4. (optional) Enter a free-text description for the log in the **Description** field.



5. (optional) Select keyword(s) for the log from the **Keywords** field (Autocomplete list) or from a keyword tool. For more information on how to assign keywords to media, see [the General Functions user manual](#).

The keyword appears in the Keywords list.

6. (optional) To keep the selection of keywords for the next log, select **Follow previous logs keywords**.
7. (optional) Select an interest level for the log.
8. (optional) Select a highlight color for the log.
9. For an easy tracking of the logs, you can select a color for the log by clicking one of the color buttons. If you want to create a series of logs with the same background color, select the **Remember Color Selection** option.
10. Click the **INSERT** button.

The log entry is displayed in the Logs grid. A log is created on each relevant recorder channel defined during step 3 of the logsheet creation:

09-12-08:15 1 Yellow 08-Dec-2021 Sunny Stadium											
Name	Clip Elements	LSM ID	Status	Protected	TC IN	TC OUT	Duration	Creation Date	Keywords	Participants	
13_PGEXT3_REC1	[+]	CamA/13			22:36:34.21	03:17:46.09	04:41:11.13	04-Dec-2021 23:26:31			
13_PGEXT3_REC2	[+]	CamB/13			22:36:26.13	03:17:46.09	04:41:19.21	04-Dec-2021 23:26:31			
13_PGEXT3_REC3	[+]	CamC/13			22:32:45.09	03:17:46.09	04:45:01.00	04-Dec-2021 23:26:31			

11. Repeat the procedure to create as many logs as you want.

## 4.3. Retroactive Logging

### 4.3.1. Context of Use

In some workflows, logs will be added to media later than live.

This can be done on clips created earlier, sometimes just for a reason of easy retrieval of archived material. In other cases, story editors reviewing the logged clips may decide to add more logs.

Users may also log a recorded train, for example during a session break, by rewinding and browsing the train loaded on the Player.

To do so, you first need to assign a player channel to the IPLogger window and to load the selected train on the player channel.

### 4.3.2. Assigning a Player

#### Introduction

There are several ways to assign a player channel or the Software Player to an IPLogger window.



If a default player channel has been defined from the Channel Explorer, this channel will automatically be assigned to IPLogger and the IPDirector main window when you open the application.

See the Channel Explorer manual for more information on how to set and how to clear a default player channel.

## How to Assign a Player Channel or the Software Player

### From the Channel Explorer

Users can assign a player channel to a IPLogger window from the Channel Explorer. This can be done in the following way:

- Drag a player channel from the Channel Explorer window and drop it on the IPLogger window.

The name of the selected player is displayed in the Associated Channel zone.

When a channel is assigned to an application, the **Player** icon in the Channel Explorer window changes

from  to .

Additionally, the **Player** area of the IPLogger window becomes active and shows the running timecode of the record train loaded on the associated player channel.

### From the Associated Channel Zone Contextual Menu

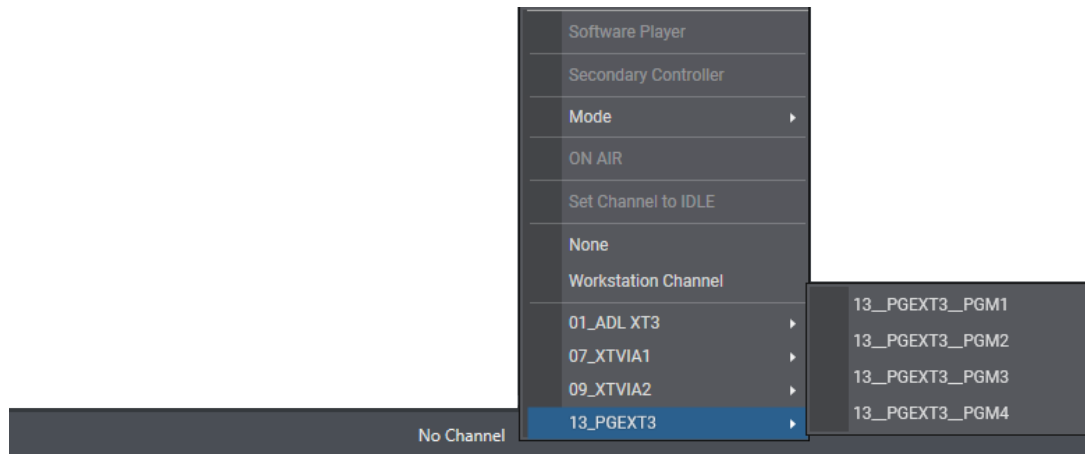
Users will be able to select a player from the Associated Channel zone.

This can be:

- a player channel from an EVS video server
- the workstation channel, this means the player channel set as **linked** from the IPDirector Configuration window of the Remote Installer
- the Software Player, if the workstation has a valid license for the OCX Software Player, and if the Software Player is currently associated with a Control Panel or a Playlist Panel.

To associate a player channel to the application,

1. Right-click the Associated Channel zone at the bottom of the window.  
A contextual menu is displayed.
2. Select a player from the menu.



The name of the selected player is displayed in the Associated Channel zone.

If the selected player channel is connected to an IN port of a video router, itself associated with OUT ports, the name of the router OUT port(s) is displayed after the player channel name.

### 4.3.3. Logging a Recorded Clip or Train

#### Prerequisites

1. Assign a player channel or the Software Player to a Control Panel.
2. Assign the same player to the IPLogger window.
3. Load the selected record train or recorded clip on the player.

#### How to Log a Recorded Clip or Train

To create a new log entry in a selected logsheet,

1. From the Control Panel, move through the media until you find the event you want to log.
2. (optional) From the IPLogger main window, enter or modify the values in the Log Metadata area.



3. Click the **New** button in the Player area.

The Create a New Log window opens with the timecode grabbed from the media loaded on the selected player:

See section "Create a New Log Window" on page 35 for more information on the fields.

## NEW !



### Quick Logging

Rather than clicking the **New** button, press **CTRL** and click a keyword from a keyword grid or dictionary. This opens the Create a New Log window with the timecode grabbed from the media loaded on the player and with the selected keyword.

The **Enable Quick Logging** setting must have been selected from the IPLogger settings.

4. (optional) Enter a free-text description for the log in the **Description** field.
5. (optional) Select keyword(s) for the log from the Autocomplete list or from the keyword grid(s). For more information on how to assign keywords to media, see [the General Functions user manual](#).  
The keyword appears in the Keywords list.
6. (optional) To keep the selection of keywords for the next log, select **Follow previous logs keywords**.
7. (optional) Select an interest level for the log.
8. (optional) Select a highlight color for the log.
9. For an easy tracking of the logs, you can select a color for the log by clicking one of the color buttons. If you want to create a series of logs with the same background color, select the **Remember Color Selection** option.
10. Click the **INSERT** button.  
The log entry is displayed in the Logs grid.
11. Repeat the procedure to create as many logs as you want.

## 4.3.4. Association Rule Between Clips and Logs

As far as the parameter as been configured in the Remote Installer, the system automatically detects clips which are created and contain the timecode of an existing log, and it associates both.

Generally, the users who create clips during an event are not the users who create logs. When a new clip contains a log timecode between its Protect IN point and its Protect OUT point, i.e. guardbands included, the clip automatically appears in the Logs grid:

08-Dec-2021 Stadium										
Name	Clip Elements	LSM ID	Status	Protected	TC IN	TC OUT	Duration	Creation Date	Keywords	Participants
13_PGEXT3_REC1	[+]	CamA/13			22:50:31.04	03:35:16.18	04:44:45.14	04-Dec-2021 23:26:31		
13_PGEXT3_REC2	[+]	CamB/13			22:50:53.15	03:35:16.18	04:44:23.03	04-Dec-2021 23:26:31		
13_PGEXT3_REC3	[+]	CamC/13			22:47:21.20	03:35:16.18	04:47:54.23	04-Dec-2021 23:26:31		
cl_pgse_211208a	[+]	6136/13			03:26:04.13	03:34:15.23	00:08:11.10	07-Dec-2021 03:34:47	nice action	Angela

Keywords from the clip (standard keywords and participants keywords) are displayed in the corresponding **Keywords** and **Participants** columns.

## 4.4. Create a New Log Window

### Window Overview


The Create a New Log window opens when one of the **New** button is clicked to create a log.

The Create a Log window is divided into two panes:

1. The left pane contains the log information, i.e. general log data.  
It is always displayed.



2. The right pane contains the user fields making up the profile for Log Metadata associated with the logsheet profile selected at the logsheet creation.

It is displayed by clicking the right area in the **Pane Display** button .

## Fields in the Create a New Log Window

### Log Information Pane

The Log Information pane contains the following user interface elements:

#### Log Timecode

This read-only field displays the log timecode of the current log. It is grabbed from the preview recorder defined in step 3 or from the PC in case the **Link to PC Timecode** button has been clicked

The timecode display can be changed by right-clicking this field and selecting an option from the menu.

#### Interest Level buttons

The **Interest Level** buttons allow users to assign an interest rating to a log. Four interest levels can be defined, from no star to 3 stars. The background of the button corresponding to the selected interest level is blue. The default value is the no star level.

#### Tape ID

This identifies the tape on which the log information is stored.

#### Switch ENTER / CTRL + ENTER

This option determines the behavior of the **ENTER** shortcut and the **CTRL+ENTER** shortcut.

When the checkbox is selected:

- **ENTER** validates the log
- **CTRL+ENTER** goes to the next line in the **Description** field.

When the option is not selected, the behavior of the two shortcuts is reversed.

#### Remember Color Selection checkbox

This checkbox is used to keep a selected color from one log to the next log created. When the checkbox is selected, the focus will be placed by default on the selected color square next time the Create a New Log window opens.



Two users can work on the same logsheet at the same time with different states of the Remember Color Selection checkbox and different colors associated with the checkbox.

#### Follow Previous Logs Keywords checkbox

This checkbox is used to keep selected keywords from one log to another. When the checkbox is selected, the keywords entered for a log are automatically kept for the next log created.

## Highlight Colors

These buttons are a set of colors which can be used to categorize the logs. The gray button lets the log without any associated color. The log line will be highlighted with the selected color in the Logs grid and the Elements grid of the Database Explorer. The operator can then search on the colors in the grids.

## Description

This field is used to add a free text description to the log.

This will appear in the **Description** column of the Logs grid for the corresponding log.

## Keywords

This area allows you to assign up to fifty keywords to a log to qualify its content.

For more information on how to assign keywords to media, see the General Functions user manual.

## Log Metadata Pane

This pane displays the user fields making up the Profile for Log Metadata which is associated with the logsheet profile selected at the logsheet creation.

See section "Step 1: Defining the Logsheets Characteristics" on page 15 for more information on the selection of a logsheet profile.

## 5. Using Keywords and Metadata Profile with Logsheet and Logs

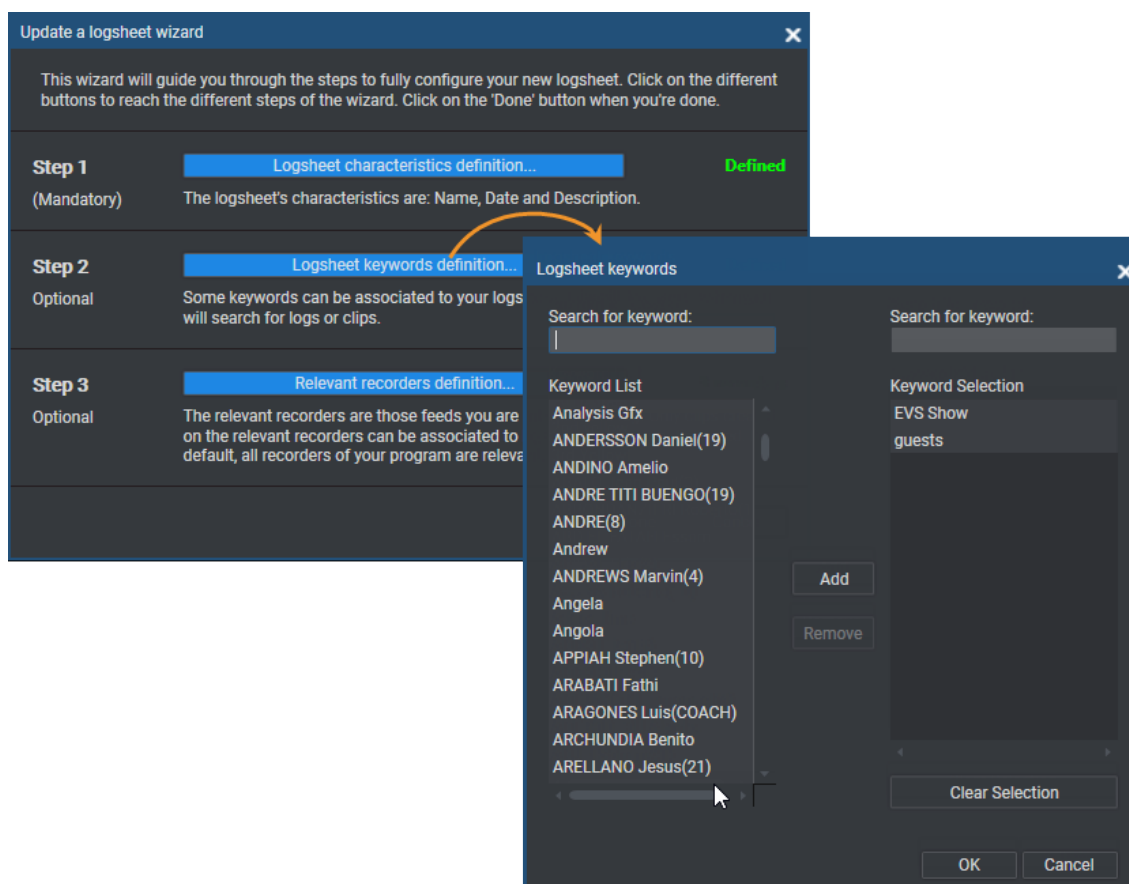
### 5.1. Parent Keywords

#### Definition

The parent keywords are keywords set at the logsheet level, and therefore associated with all log entries of a logsheet.

#### Assignment

The parent keywords are defined when you create the logsheet, in step 2 of the Logsheet wizard (the Logsheet Keyword Definition window).



The parent keywords are automatically assigned to all log entries of a logsheet. They are displayed in the **Parent Keywords** column of the Logs grid. The parent keywords set as Participants at keyword creation are displayed in the **Parent Participants** column of the Logs grid.



## Modification

If you want to modify the parent keywords, you need to access the Logsheet Keyword Definition window by clicking the **Properties** button from the Toolbar.



The parent keywords modified from this window will automatically be modified in all log entries of the logsheet.

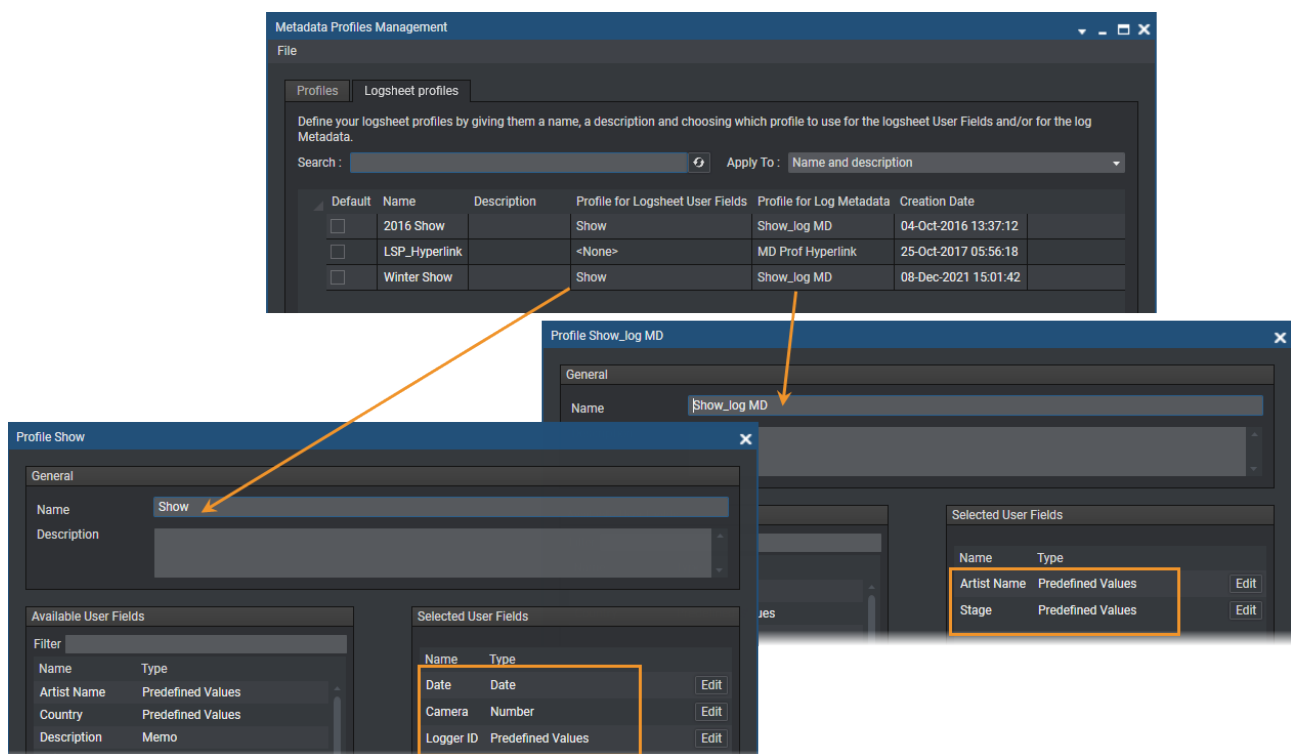
## 5.2. Logsheet User Fields Profile

### Definition

Logsheet user fields are set at the logsheet level, and therefore associated with all log entries of a logsheet.

### Assignment

At step 1 of the logsheet creation, a logsheet profile can be assigned to the logsheet. It has been set from the Metadata Profiles Management window.



In case a profile for Logsheet User Fields has been associated at the logsheet profile creation, its user fields are displayed in the Logsheet Characteristics window as soon as a logsheet profile has been selected.



Values can be specified for all the user fields at the logsheet creation. At this step, values can be defined for text, timecode, date and number user's field types. Additional values can be defined for predefined text values user field type.

Each user field name is displayed as a column in the Logs grid of IPLlogger.

## Modification

Each log created automatically gets the values defined at the logsheet creation.

If you want to modify the logsheet user filed values, you need to access the Logsheet Keyword Definition window by clicking the **Properties** button from the Toolbar.



The logsheet user filed values modified from this window will automatically be modified in all log entries of the logsheet.

## 5.3. Log Metadata Profile

### Definition

Log metadata can be attributed to log entries of a logsheet for predefined types of information.

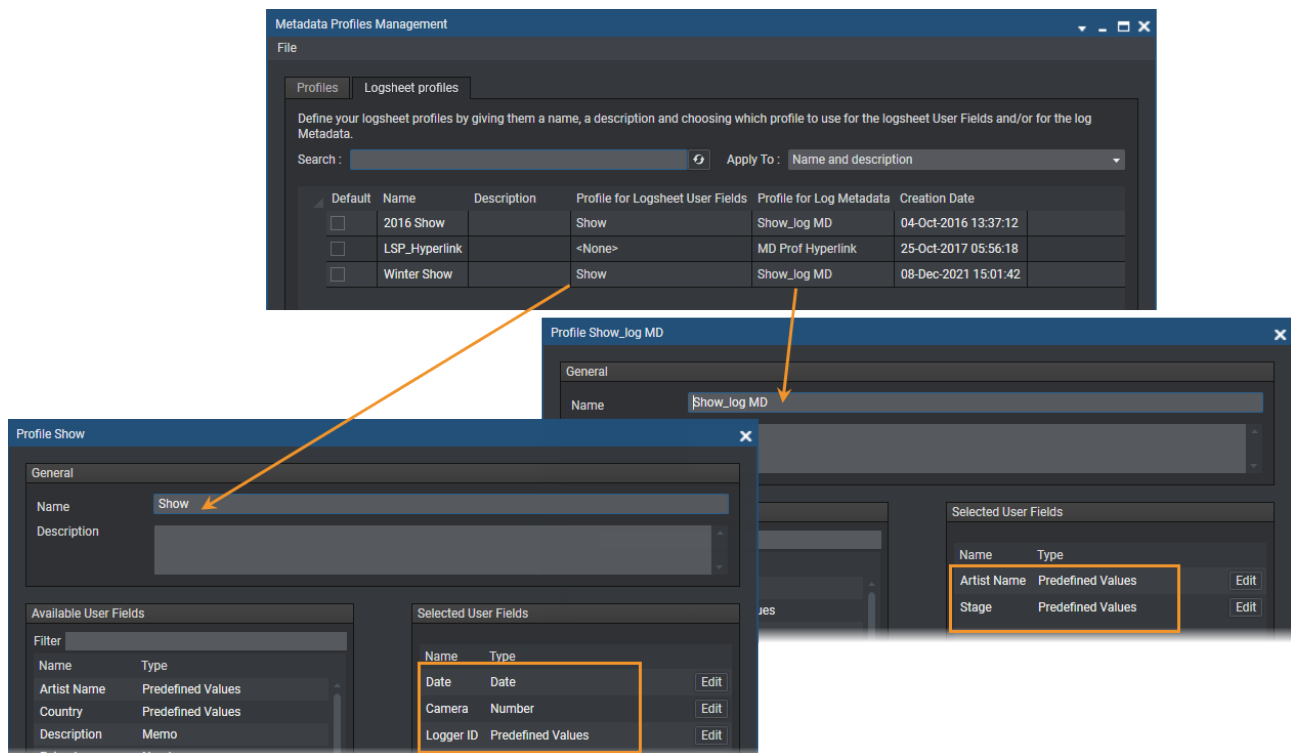
This is especially useful when tracking the pitcher in a baseball game, or a period of action in a sports event, or program part of an entertainment event.

For example, you may have defined a "period" field with a list of values such as "first half" and "second half".

Log metadata work like a sticky keyword that will persist through all new log entries made until the value is changed in the Log Metadata pane.

### Assignment

At step 1 of the logsheet creation, a logsheet profile can be assigned to the logsheet. It has been set from the Metadata Profiles Management window.



In case a profile for Log Metadata has been associated at the logsheet profile creation, a New Log Metadata area is displayed in the IPLogger window. The user fields from this profile are shown in this area:

**New log metadata (Show\_log MD)**

Artist Name: Artist A

Stage: Yellow

Values can then be entered or selected in each field.

Each time a new log is created, it receives these log metadata values.

Each log metadata type is displayed as a column in the Logs grid.

## Modification

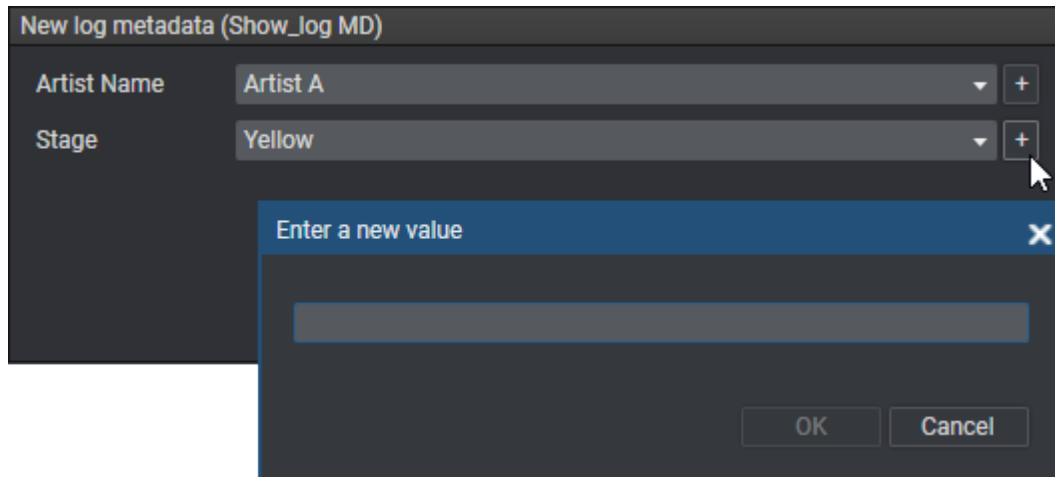
Once a log metadata value has been added to a log entry, there is no way to modify or delete it from the active system. If you have the required user right, you can only modify the log metadata values that will be associated with upcoming logs at any time in the way described below.

Before creating a new log entry on which you want the log metadata values to be modified, do one of the following:

- To modify a text field, timecode field or date field, select the value and/or type the new value.



- To modify a value from a list, select the new value from the list.
- To add a new value in a drop-down list,
  - a. Click the **+** sign next to the field.



- b. Enter the new value in the Enter a New Value window.
- c. Click **OK**.

Then, you can select the new value.

Any new log entry created afterwards will have the new values of log metadata assigned as they have been modified.

## 5.4. Log Entry Specific Keywords

### Definition

It is possible to assign keywords to individual log entries. To do so, it is necessary to have previously set up a keyword list. One or more keyword grids or dictionaries may have been set up and named for use with the logsheet. Once set up, as many keyword grids or dictionaries can be used.

### Assignment

The log entry specific keywords can be assigned to each individual log entry when it is created or edited.

This can be done in various ways.

- By direct entry:

You can start typing the keyword directly in the **Keyword** field of and select a keyword proposed in the Autocomplete list.
- By selection from a Keyword tool:

You can select keywords from a keyword grid or a cascading grid.

Relevant keyword grids or dictionaries are usually best prepared in advance of the logging session although they could be produced and/or modified at any time. As many keyword grids or dictionaries as required can be used with a logsheet.

See [the General Functions user manual](#) for more details on the different procedures.

Standard keywords and participants keywords assigned to a log entry are displayed in the **Keywords** and **Participants** columns of the Logs grid.

Keywords	Participants
nice emotion	
	Chloe
Sunny	
nice emotion	Angela
Brazil	Angela

## Modification

A log keyword can be modified from the Edit a Log window. See section "Editing and Viewing Logs" on page 50 for more information.



## 6. Protecting Media

### Context of Use

At the end of a logging session, it is important to protect your media to ensure that the A/V material corresponding to your log entries will still be available later.

To protect the media, the system creates a clip which cannot thereafter be deleted, unless it is previously unprotected.

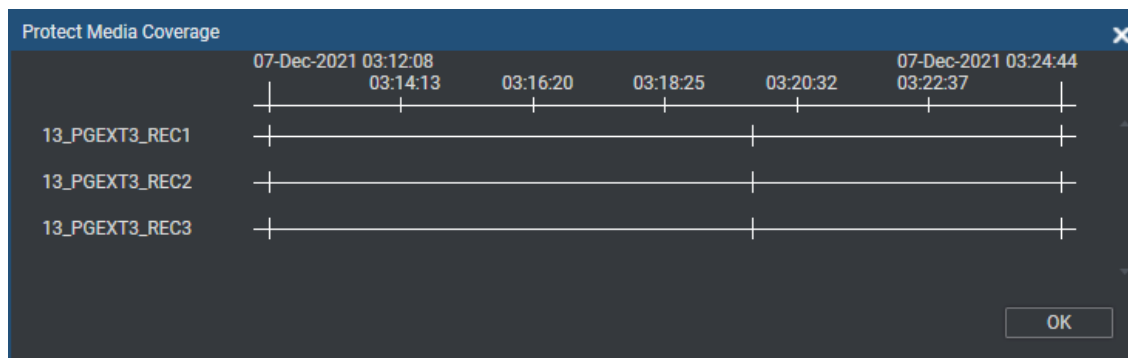
The users can define a prefix to be applied to their protect media in **Tools > Settings > IPLogger > Protect Media Prefix**. This setting is a user setting. By default, the prefix is "PM".

### How to Display Protect Media Coverage

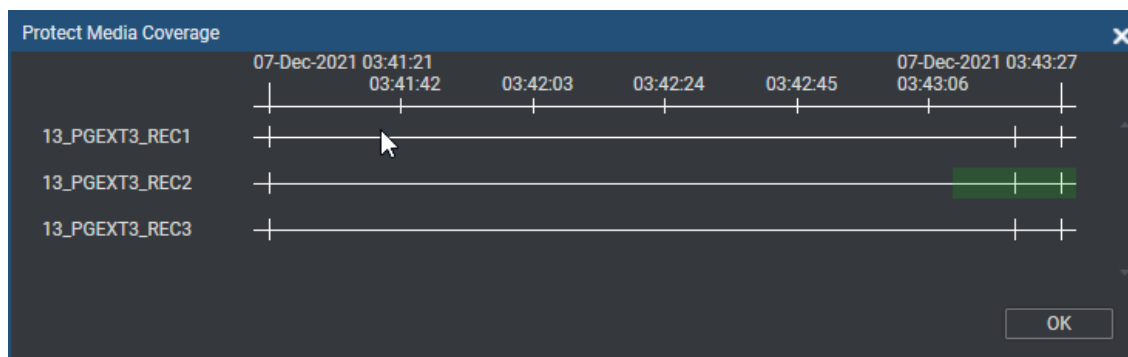
You can check whether all the relevant media is protected in the Protect Media Coverage window by clicking the **Display PM Coverage** button on the Toolbar.

This window displays a time line for each relevant recorder. The log entries are shown as vertical lines.

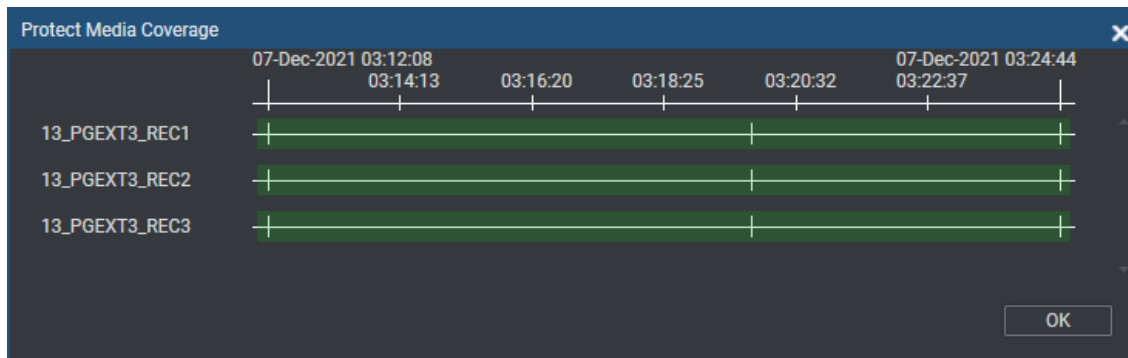
If no media has been protected yet, the time lines are as follows:



A/V data that is protected is marked with a green background:



If the **Protect All** command has been executed, all the A/V data is marked with a green background:



## How to Protect Selected Media

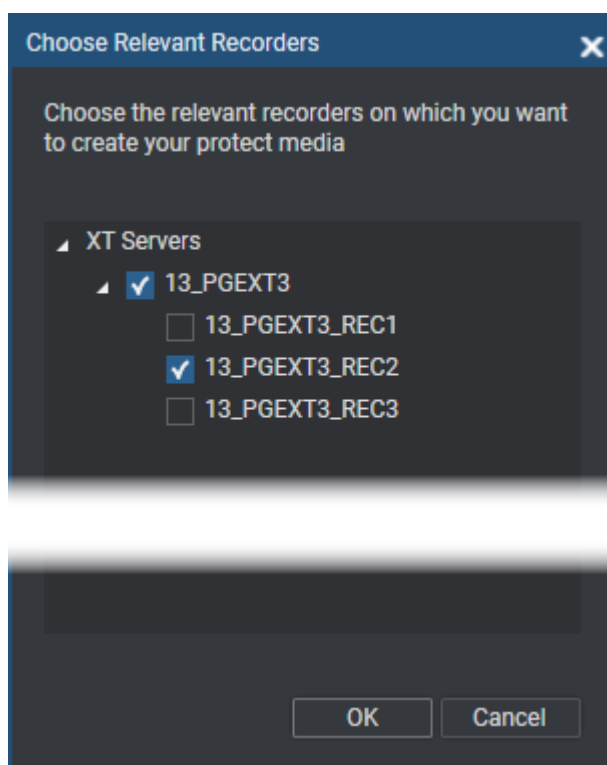
You can decide to only protect the media corresponding to some of your log entries,

1. In the Logsheet grid, select the logs you want to protect. Use **Ctrl** or **Shift** keys for a multiselection.
2. Right-click the selection.

The Log contextual menu is displayed.

3. Select **Protect Selected Logs** from the contextual menu.

The Choose Relevant Recorders window opens:



4. Select the recorders from which you want to protect the recorded media.

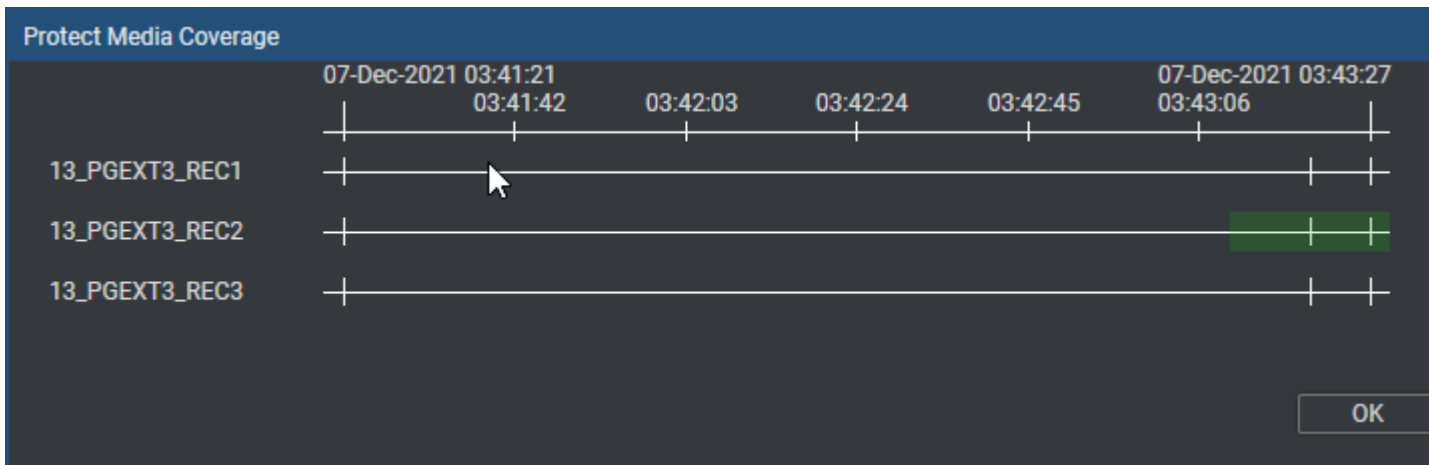
A clip, covering all the selected log timecodes, is created on each of the chosen recorders.



Each clip is displayed in the expanded view of the log:

TC	Description			Level	Color	Creation Date	Keywords	Participants	
03:41:21:04	log 1				Blue	08-Dec-2021			
	Name	Clip Elements	LSM ID	Status	Protected	TC IN	TC OUT	Duration	Creation Date
	13_PGEXT3_REC1	[-]	CamA/13			22:55:43:19.	03:46:16:19	04:50:32:24.	04-Dec-2021 23:26:31
	13_PGEXT3_REC2	[-]	CamB/13			23:03:47:09	03:46:16:19	04:42:29:10	04-Dec-2021 23:26:31
	13_PGEXT3_REC3	[-]	CamC/13			23:00:02:09	03:46:16:19	04:46:14:10	04-Dec-2021 23:26:31
03:43:20:15	log 2				Yellow	08-Dec-2021			
	Name	Clip Elements	LSM ID	Status	Protected	TC IN	TC OUT	Duration	Creation Date
	13_PGEXT3_REC1	[-]	CamA/13			22:55:43:19.	03:46:16:19	04:50:32:24.	04-Dec-2021 23:26:31
	PM LS_pge_211207a-00	[-]	613H/13		IP	03:43:15:15	03:43:25:15	00:00:10:00	07-Dec-2021 03:43:47
	13_PGEXT3_REC3	[-]	CamC/13			23:00:02:09	03:46:16:19	04:46:14:10	04-Dec-2021 23:26:31
03:43:27:23	log 3				Red	08-Dec-2021			
	Name	Clip Elements	LSM ID	Status	Protected	TC IN	TC OUT	Duration	Creation Date
	13_PGEXT3_REC1	[-]	CamA/13			22:55:43:19.	03:46:16:19	04:50:32:24.	04-Dec-2021 23:26:31
	PM LS_pge_211207a-00	[-]	613H/13		IP	03:43:15:15	03:43:25:15	00:00:10:00	07-Dec-2021 03:43:47
	13_PGEXT3_REC3	[-]	CamC/13			23:00:02:09	03:46:16:19	04:46:14:10	04-Dec-2021 23:26:31

A/V data that is protected is marked with a green background in the Protect Media Coverage window.

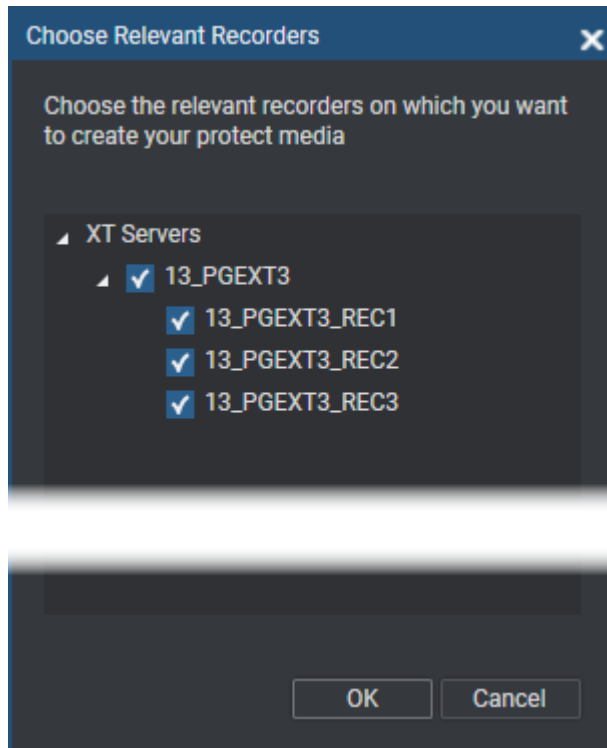




## How to Protect All Media

To protect the media corresponding to all the log entries of your logsheet at once,

1. Click the **Protect All** button from the IPLogger toolbar.
2. The Choose Relevant Recorders window opens:



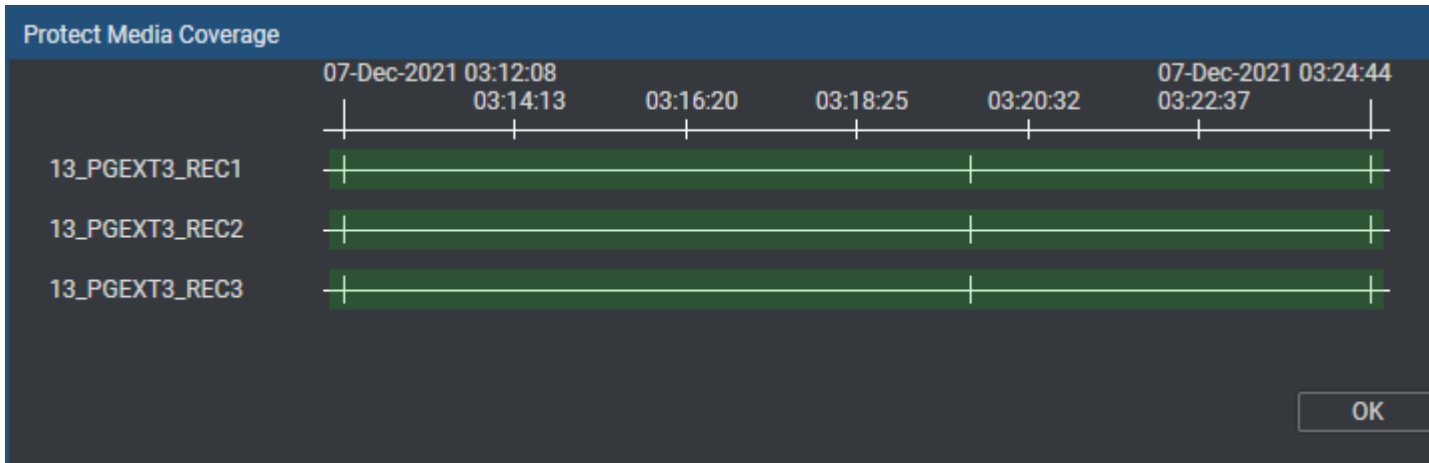
3. Select the recorders from which you want to protect the recorded media.

A single clip, covering all the log timecodes, is created on each of the chosen recorders.

Each clip is displayed in the expanded view of the log:

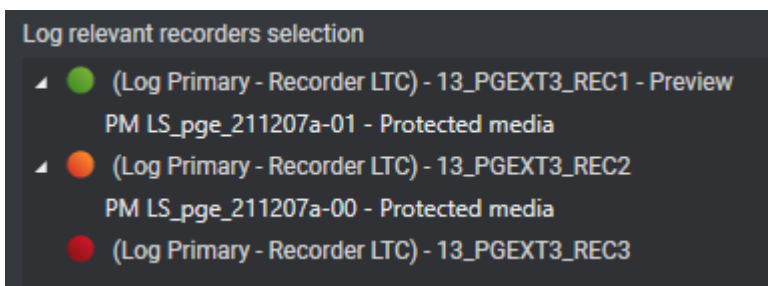
03:12:08:15 1 Yellow 08-Dec-2021 Sunny Stadium									
Name	Clip Elements	LSM ID	Status	Protected	TC IN	TC OUT	Duration	Creation Date	Keywords
PM December 2021 Show-00	[+]	613D/13	[+]	[P]	03:12:03:15	03:24:49:05	00:12:45:15	07-Dec-2021 03:28:41	Sunny; nice emotion; EVS Show
PM December 2021 Show-01	[+]	613E/13	[+]	[P]	03:12:03:15	03:24:49:05	00:12:45:15	07-Dec-2021 03:28:41	Sunny; nice emotion; EVS Show
PM December 2021 Show-02	[+]	613F/13	[+]	[P]	03:12:03:15	03:24:49:05	00:12:45:15	07-Dec-2021 03:28:41	Sunny; nice emotion; EVS Show
03:19:49:14 2 Green 08-Dec-2021 nice emotion Stadium									
Name	Clip Elements	LSM ID	Status	Protected	TC IN	TC OUT	Duration	Creation Date	Keywords
PM December 2021 Show-00	[+]	613D/13	[+]	[P]	03:12:03:15	03:24:49:05	00:12:45:15	07-Dec-2021 03:28:41	Sunny; nice emotion; EVS Show
PM December 2021 Show-01	[+]	613E/13	[+]	[P]	03:12:03:15	03:24:49:05	00:12:45:15	07-Dec-2021 03:28:41	Sunny; nice emotion; EVS Show
PM December 2021 Show-02	[+]	613F/13	[+]	[P]	03:12:03:15	03:24:49:05	00:12:45:15	07-Dec-2021 03:28:41	Sunny; nice emotion; EVS Show
13_PGEXT3_REC1	[+]	613C/13	[+]	[P]	03:19:39:14	03:19:59:14	00:00:20:00	07-Dec-2021 03:20:08	nice emotion
03:24:44:05 3 Red 08-Dec-2021 EVS Show Stadium									
Name	Clip Elements	LSM ID	Status	Protected	TC IN	TC OUT	Duration	Creation Date	Keywords
PM December 2021 Show-00	[+]	613D/13	[+]	[P]	03:12:03:15	03:24:49:05	00:12:45:15	07-Dec-2021 03:28:41	Sunny; nice emotion; EVS Show
PM December 2021 Show-01	[+]	613E/13	[+]	[P]	03:12:03:15	03:24:49:05	00:12:45:15	07-Dec-2021 03:28:41	Sunny; nice emotion; EVS Show
PM December 2021 Show-02	[+]	613F/13	[+]	[P]	03:12:03:15	03:24:49:05	00:12:45:15	07-Dec-2021 03:28:41	Sunny; nice emotion; EVS Show
03:31:52:07 4 Orange 08-Dec-2021 Stadium									
Name	Clip Elements	LSM ID	Status	Protected	TC IN	TC OUT	Duration	Creation Date	Keywords

In the Display PM Coverage window, all the A/V data is marked with a green background.



## Protect Media Status

In the Log Relevant Recorders window, reachable via Properties > Step 3, the colors in front of the Relevant Recorders in the selection indicate the protect media status.



Icon Color	Protected Media Status
● Green	All of the media related to the logs on this recorder are protected.
● Orange	Some of the media related to the logs on this recorder are protected.
● Red	None of the media related to the logs on this recorder are protected.

## 7. Creating Clips Automatically from a Log Entry

### Introduction

A clip can be automatically created around a log timecode when it is sent to a bin in one of the following ways:

- Drag-and-drop of the log into a bin: the clip can be created on the record train selected as the preview recorder or on all relevant recorders.

Such a clip inherits from the profile of the last created clip.

- Preselection of a bin at logsheet creation: the clip will be automatically created on the record train selected as the preview recorder as soon as the log is created, and the clip will be sent the bin. The user does not have to do any additional operation.

Such a clip inherits from the log profile and values of the associated log.

Refer to section "Creating a Logsheet" in the IPLogger user manual.

### Prerequisites

- Pre-Mark and Post-Mark durations must have been set via the **Automatic Clip Creation based on Logs** setting in the **Tools > Settings > Clips > General** category.
  - Pre-Mark: duration between the clip IN point and the log timecode.
  - Post-Mark: duration between the log timecode and the clip OUT point.
- A bin must have been selected in the Logsheet properties if you want the clip to be created without drag-and-drop operation.

### How to Create Clips Automatically from a Log Entry by Drag-and-Drop

To automatically create a clip on the record train selected as the preview recorder,

1. Select the log line in the Database Explorer Elements grid.
2. Drag the log entry onto a bin in the Database Explorer tree or onto an open Bin window.

A clip is automatically created.

To create a clip on all relevant recorders,

- hold the **SHIFT** key during the drag-and-drop operation.

To make the Save Clip window open and be allowed to name the clip and associate metadata

- hold the **CTRL** key during the drag-and-drop operation.



## 8. Editing and Viewing Logs

### Introduction

Once created, the log entries can be viewed in a Video Display and/or edited.

You access the **View** and **Edit** options when right-clicking on a log entry and selecting one of the View/Edit options displayed in the contextual menu. See section "Log Entry Contextual Menu" on page 13 for a description of all the options.

### How to Edit Log Metadata

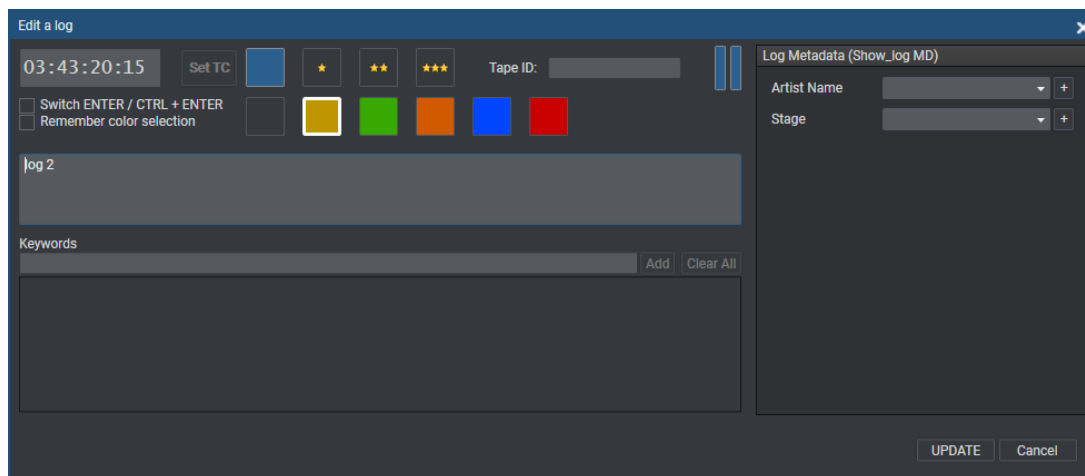
To edit a log metadata,

1. Right-click the log entry you want to edit in the Logs grid.

The Log contextual menu opens.

2. Select **Edit** from the contextual menu.

The Edit a Log window opens allowing the modification of the log metadata:



3. Once the log entry is modified, click the **UPDATE** button to confirm the modifications.

The log entries are updated.



You may change some data, such as interest level, color,..., for multiple logs at once: select all the lines to edit and choose the data you want to associate to all of them in the Edit log window.

### How to Edit the Timecode of a Log Entry

The timecode position can be manually modified in the **Timecode** field of the Edit a Log window.

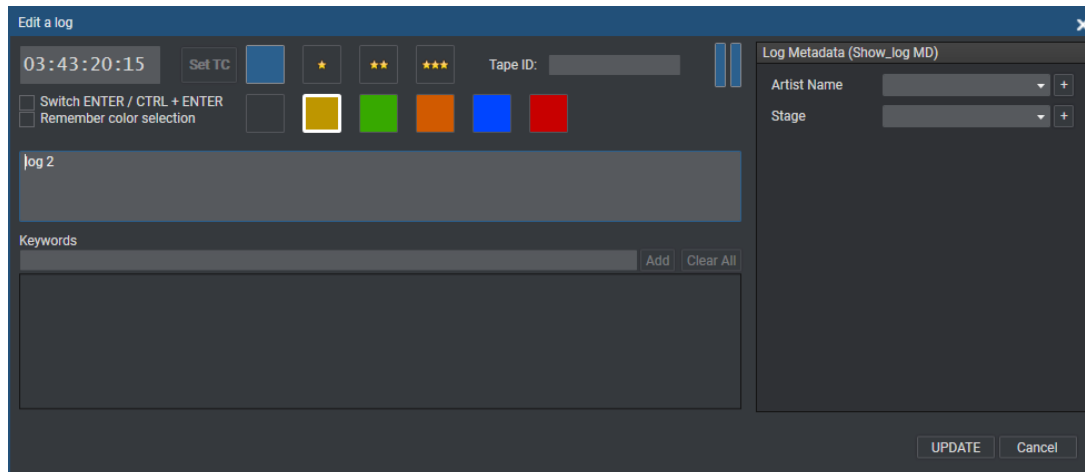
To edit the timecode of the log entry,

1. In the Logs grid, right-click the log entry for which the timecode has to be edited.

The Log contextual menu opens.

2. Select the **Edit** or **View and Edit** command.

The **Edit** command displays the Edit a Log window.



The **View and Edit** command also loads the log on the player channel associated with IPLogger at the relevant timecode position.

3. Do one of the following:
  - Type the new timecode for the log in the **Timecode** field of the Edit a Log window.
  - Browse the loaded media to the new requested position and click the **Set TC** button in the Edit a Log window. The new timecode is then displayed in the **Timecode** field.
4. Click the **UPDATE** button to confirm the TC modification.

## How to View a Log

To view an entry from a logsheet (i.e. load the log on the player channel at the log timecode position), a player channel or the Software Player must have been assigned to the IPLogger main window, and to a Control Panell to view it in the Control Panel.

This can be a log set on a record train or a log contained in a clip. See section "Logs Display" on page 7 for all the possible types of clips.

## Loading the Log from the Preview Recorder

The log created on the recorder selected as "preview" can be viewed in one of the following ways:

- Double-click a log entry, as seen in the collapsed view of the Logs grid.
- Right-click the log entry (collapsed view) and select **View** from the contextual menu.

The log created from the preview recorder is loaded on the player channel or on the Software Player at the log timecode.



## Loading a Log from a Relevant Recorder

A log created on one of the relevant recorders can be viewed as follows:

1. Expand the log line to see all the log entries created from all the selected relevant recorders.
2. Click one of the entries.

The log is loaded on the player channel or on the Software Player at the log timecode.

The log is loaded on the player channel or on the Software Player at the timecode of the log entry on the record channel defined as the preview channel for the logsheet.

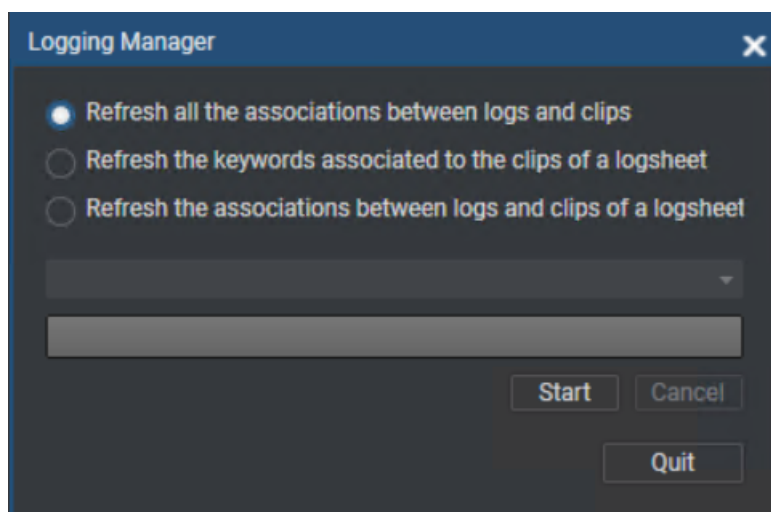
## 9. Refreshing Associations between Logs, Clips and Keywords

### Introduction

The Logging Manager provides options to manage the links between the clips and the logsheet. It is accessed from the Tools menu of the Menu bar in the IPDirector main window.



That this function is only available for administrators and should be used cautiously.



### Refresh Operations

The operations available from the Logging Manager are explained hereafter.

Users must click **Start** to launch the refresh operation.

#### Refresh all Associations between Logs and Clips

This option refreshes all links for all logged events and clips present in the IPDirector and XNet network.

#### Refresh the Keywords Associated to the Clip for a Logsheets

When users select this option, they must then choose a logsheet from the list. This refreshes any keywords that should be associated with a clip within the specified logsheet.



## **Refresh the Association between Logs and Clips for a Logsheet**

When users select this option, they must then choose a logsheet from the list. This refreshes any association between logged events and clips within the specified logsheet.



# 10. Entering a Timecode Offset

## Context of Use

Imagine the logs and the recordings are made in different locations or on two different setups with a timecode offset between the two. For example, the images are recorded live at the event while the loggers work in a studio, with IPLogger on their laptop. The log entries receive the PC timecode of the laptop and the recordings have the actual live timecode.

When the clips are associated with the logsheet, the timecodes of the clips and the logs will not match and you need to enter an offset. This timecode offset will be applied when:

- importing a logsheet on a setup or
- importing all the media related to a logsheet.

## Limitations

The TC Offset is available only when:

- the logsheet is not locked
- the user has the appropriate rights to modify the logsheet
- there are log entries in the logsheet

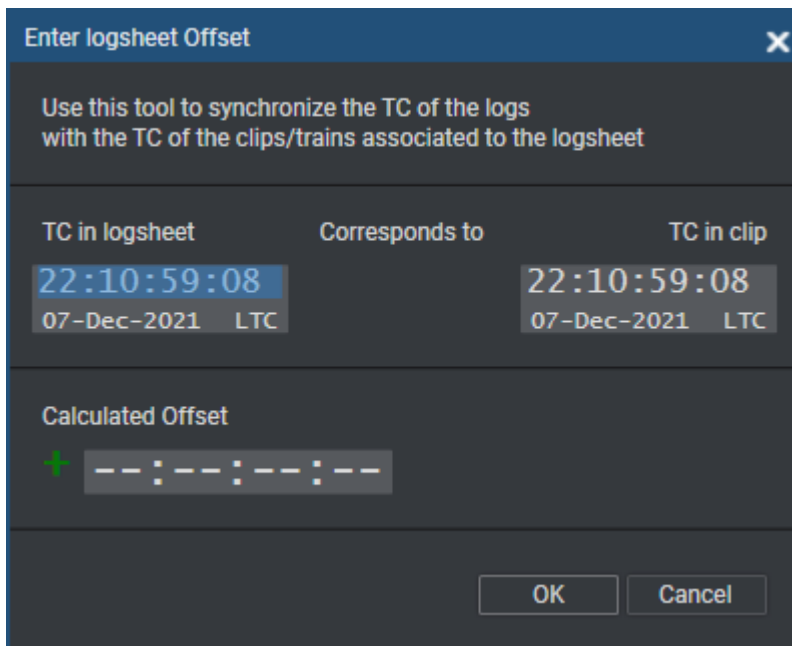
## How to Define a Timecode Offset to Synchronize Existing Logs and Clips

A tool is available to synchronize the timecode of the logs with the timecode of the clips associated with the logsheet.

To enter a timecode offset between logs and clips,

1. Click **File > Enter TC Offset**

The following window opens:



2. Enter a value in one of the **TC** fields and press **ENTER**.
3. The field is validated and the other TC values are recalculated.
4. Click **OK** to confirm or **Cancel** to discard changes.



In this case, new log entries, made after entering the offset, will not have the offset applied to them. Entering the TC Offset should only be done when the logsheet is completely finished.

## How to Synchronize a Whole Logsheet from a Loaded Image

The users can apply an offset on a whole logsheet by synchronizing one of the logs to an image loaded on a player channel.

1. Associate a player channel with IPLogger. See section "Assigning a Player" on page 31.
2. Open a Control Panel and associate the same player channel to it.
3. Click the log to load it on the player channel.
4. Move through the media until you reach the image actually corresponding to the log.

5. Right-click the log line in the Logsheet grid.

The Log contextual menu is displayed.

6. Select **Synchronize this log with the image loaded on the player** from the menu.

All the timecodes from the logsheet are reset.

## How to Apply a Timecode Offset at Log Creation

If the operators are slow or they are logging on a delayed feed, they can decide to apply an offset at log entry. The offset is applied to the timecode when the user creates the log.

1. Select **Tools > Settings > IPLogger**.
2. In the **Apply a TC offset at log creation on a live feed** field, enter a value in msec for the offset.
3. Click **OK**.

Each time you will create a new log, the offset will automatically be applied to the log timecode:

Log timecode = timecode when you have clicked the **New** button – offset value

## How to Apply a Timecode Offset at Automatic Log Export

When defining a directory for automatic log export in the Remote Installer, an offset can be specified. This could be, for example that the two setups are in different time zones. Refer to the Technical Reference manual for more information.



# 11. De-Activating a Logsheet

## Context of Use

While a logsheet is active, it generates database activity and network traffic. Whenever a clip is created, for example, the database is searched and every logsheet that contains a timecode that is in the clip will be updated.

De-activating logsheets when they are completed will improve the performance of the system. Logsheets will no more be processed in the database, which reduces the database activity and network load. It is, however, possible to browse all its logs as usual.

## How to De-Activate a Logsheet

To de-activate a logsheet,

1. Open the logsheet to be de-activated.
2. In the File menu, select **De-activate logsheet**.

The following warning message is displayed.

If you select the checkbox **Do not show this message again**, this warning will not appear the next time you de-activate a logsheet.

3. Click **Yes**.

After a logsheet has been de-activated:

- the logsheet cannot be updated
- no new log entries can be added
- the logsheet offset cannot be changed
- the logsheet properties cannot be changed.

A deactivated logsheet is identified by a  icon in the Tree view of the Database Explorer.

## How to Re-Activate a Logsheet

When a de-activated logsheet is open in IPLogger, the File menu **Re-Activate Logsheet** option will restore the logsheet to the active status.

## 12. Importing and Exporting Logsheet and Logsheet Profile

### Importing a Logsheet

#### Context of Use

If a logsheet has been created on another unconnected IPDirector workstation in a separate location (for example at a sports venue) and the logsheet is to be used on a different system, (for example in a post production area), it can be imported from IPLLogger.

You need the following user right: **Logsheet > Import** from the Logging and Keywords tab of the User Manager.

#### How to Import a Logsheet

1. From IPLLogger, click **File** on the Toolbar.
2. Select **Import > A logsheet...** from the **File** menu.  
The Import window opens.
3. Browse to the .xml logsheet file to import and select it.
4. Click **Open**.

The logsheet and its logs is imported into IPDirector.

It is then available from the Database Explorer from the Logs tree structure.

### Exporting a Logsheet

#### Context of Use

A logsheet can be exported either in XML or in text format (CSV).

- XML files can be re-imported into another IPDirector workstation at a different location.
- CSV files can be re-imported into software such as Microsoft Excel ® to produce a printout.

You are allowed to do the Export operation from different applications:

- Database Explorer: see [the Database Explorer user manual](#) for more information on that function.see section
- Logsheet Manager tool: see section "Exporting Logsheets" on page 73 ("Managing Logsheets from the Logsheet Manager Tool" on page 67).
- IPLLogger.



## How to Export a Logsheet

1. From IPLogger, click **File** on the Toolbar.
2. Select **Export > Current logsheet...** from the **File** menu.  
The Export window opens.
3. Browse to the destination of your choice.
4. In the **Save as Type** field, select **Logsheet file (\*.xml)** or **CSV file (\*.csv)**.
5. Click **Save**.

For a .csv file, you will have to select an export profile. See section "Exporting Logsheets" on page 73 for the complete procedure.

## Exporting a Current Logsheet Profile

To export the currently used logsheet profile as an .XML file,

1. From IPLogger, click **File** on the Toolbar.
2. Select **Export > Current logging profile...** from the **File** menu.  
The Export Profiles window opens.
3. Browse to the destination of your choice.
4. Click **Save**.

Here is an example of an XML Profile.

```
<?xml version="1.0" encoding="UTF-8"?>
<MetadataDefinition Version="2.0.1">
  ..<LogsheetProfiles>
    ....<LogsheetProfile GUID="626b05230bd2422989e7e9a8d9b29812">
      .....<Name>2016 Show</Name>
      .....<Description/>
      .....<LogsheetProfile
GUID="977c4eaffbd041808b1dc09afe074614">Show</LogsheetProfile>
      .....<AutomaticKeywordProfile GUID="da89e56e86274f858c200d8890848f91">Show_log
MD</AutomaticKeywordProfile>
    </LogsheetProfile>
  ..</LogsheetProfiles>
  ..<Profiles>
    ....<Profile GUID="da89e56e86274f858c200d8890848f91">
      .....<Header>
      .....<Name>Show_log MD</Name>
```

```

.....<Description/>
.....</Header>
.....<UserFields>
.....<UserField>
.....<Header>Artist Name</Header>
.....<Type>TEXT</Type>
.....<Description/>
.....</UserField>
.....<UserField>
.....<Header>Stage</Header>
.....<Type>COMBO</Type>
.....<Description/>
.....<Values UFSet="specific">
.....<value>Red</value>
.....<value>Blue</value>
.....<value>Green</value>
.....<value>Yellow</value>
.....</Values>
.....</UserField>
.....</UserFields>
....</Profile>
....<Profile GUID="977c4eaffbd041808b1dc09afe074614">
.....<Header>
.....<Name>Show</Name>
.....<Description/>
.....</Header>
.....<UserFields>
.....<UserField>
.....<Header>Date</Header>
.....<Type>DATE</Type>
.....<Description/>
.....</UserField>
.....<UserField>
.....<Header>Camera</Header>
.....<Type>NUMBER</Type>

```



```
.....<Description/>
.....</UserField>
.....<UserField>
.....<Header>Logger ID</Header>
.....<Type>COMBO</Type>
.....<Description/>
.....<Values UFSet="common">
.....<value>Logger A</value>
.....<value>Logger B</value>
.....<value>Logger C</value>
.....<value>Logger D</value>
.....</Values>
.....</UserField>
.....</UserFields>
....</Profile>
..</Profiles>
</MetadataDefinition>
```



# 13. Publishing Logs and Logsheets

## Context of Use

A logsheet can be published from the File menu.

A log entry cannot be published. Only clips containing the log can be published. This is done from the clip contextual menu in the Logs grid.

They can also be published from the Database Explorer.

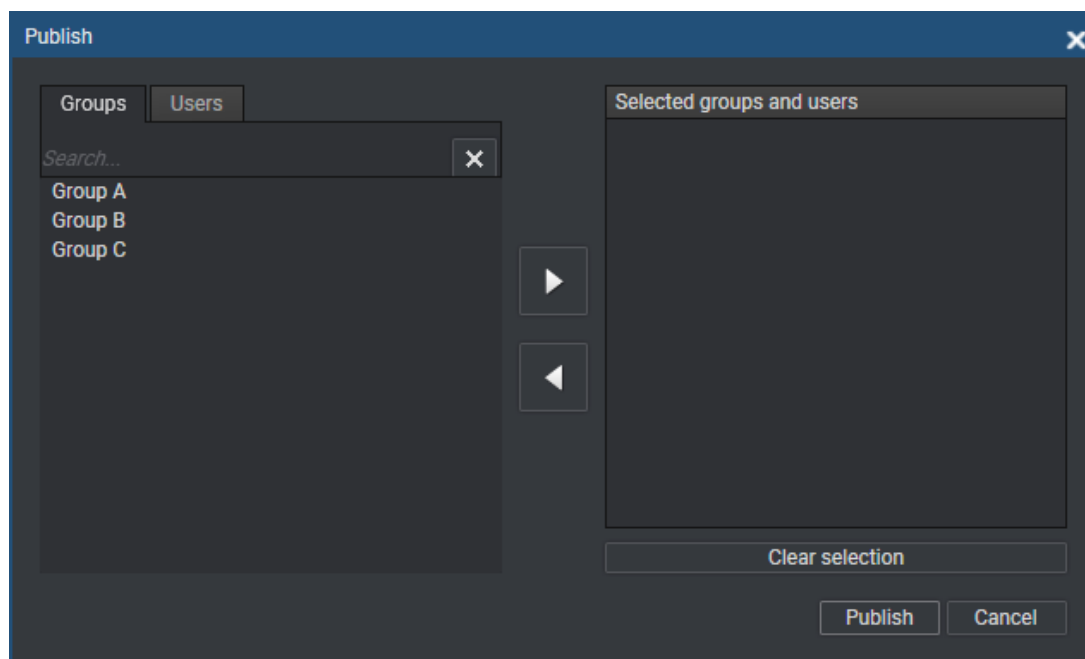
Then, they are made visible to members of the group(s), or to individual users, they are published to.

## How to Publish a Clip Containing a Log

To publish a clip containing a log to groups of users, or to individual users, from IPLLogger,

1. Right-click the clip in the Logs grid.
2. Select **Publish** from the contextual menu.

The Publish window opens.



3. Select the user group(s), or the individual users, to which you want to publish the clip in the Available Groups area on the left. Keep **CTRL** pressed to select multiple groups.



Use the **Search** field to search for a group or to search for a user from the corresponding lists.



4. Click the **Right Arrow** button to move the selected groups from the Available Groups to the Selected Groups area on the right.
5. Click the **Publish** button.

When a user group has been selected, all users belonging to the selected user group and having visibility rights on the clips will be able to view it.

## How to Publish a Logsheet

To publish a logsheet to groups of users, or to individual users, from IPLogger,

1. Select **Publish logsheet** from the File menu.

The Publish window opens.

2. Select the user group(s), or the individual users, to which you want to publish the logsheet in the Available Groups area on the left. Keep **CTRL** pressed to select multiple groups.
3. Click the **Right Arrow** button to move the selected groups / users from the Available Groups to the Selected Groups area on the right.
4. Click the **Publish** button.

## How to Unpublish

To un-publish a logsheet to a group of users, or the individual users, repeat steps above and perform the opposite operation: select the user group, or user, in the Selected Groups area and click the **Left Arrow** button.

# 14. Printing a Logsheet

## How to Print a Logsheet

To print a logsheet,

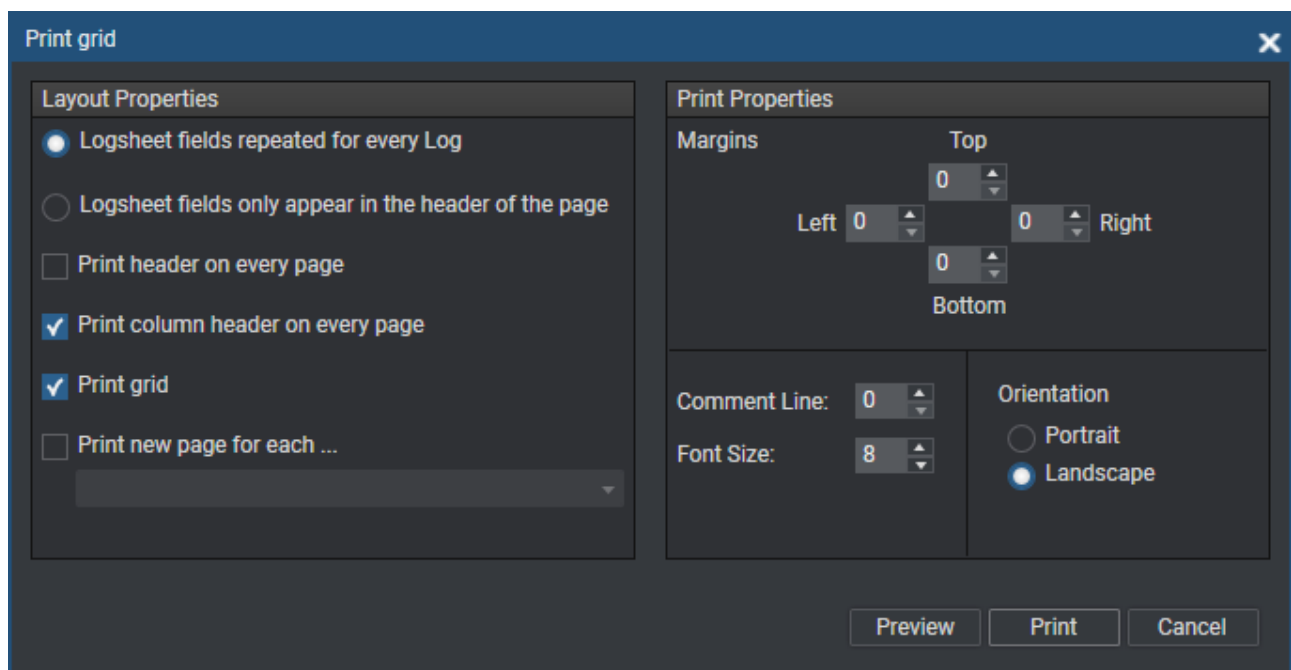
1. Open the logsheet via the **File > Open Logsheet** menu.
2. Select **Print** from the File contextual menu.

The Print Logsheet window opens.

3. Set the print options.
4. Click the **Print** button.

The logsheet is printed on the default printer.

## Print Logsheet Window



The logsheet table is not automatically adapted for the printout. The printout reflects what is displayed on the screen in the IPLogger window. This implies the following:

- The column width may have to be adapted on the screen.
- The column position may have to be modified by a drag-and-drop operation of the column heading to the requested position in the table.
- The columns which are not requested in the printout should be hidden. To hide a column, right-click the column header and click **Hide**.



- If the value in a cell is displayed on two lines, only the first line will be printed. The column width should be adapted to have only one line per record.

The following table describes the available layout properties:

Option	Description	Default
<b>Logsheet fields repeated for every log</b>	When this radio button is selected, the fields specified in the logsheet header are repeated for each log record.	Selected
<b>Logsheet fields only appear in the header of the page</b>	When this radio button is selected, the fields specified in the logsheet header are not repeated in each log record.	Not Selected
<b>Print header on every page</b>	When this check box is selected, the logsheet properties are printed on every page.	Cleared
<b>Print column header on every page</b>	When this check box is selected, the column headers are printed on every page.	Selected
<b>Print grid</b>	When this check box is selected, the grid lines are printed.	Selected
<b>Print new page for each ...</b>	<p>When this check box is selected, the user can select a field in the drop-down list to start a new page in the printout when the given field has a new value.</p> <p>If a field in the logsheet specifies the sport name in an athletics event, for example, you can specify to have a new page started in the printout each time a new sport is specified in this field.</p>	Cleared

The following table describes the available print properties:

Option	Description	Default
<b>Margins</b>	Top, left, right and bottom margins on the printed output.	0
<b>Comment Line</b>	Number of lines to be added for comments after each log record.	0
<b>Font Size</b>	Font size to be used in the printout.	8
<b>Orientation</b>	Page orientation, landscape or portrait, to be used in the printout.	Landscape

# 15. Managing Logsheets from the Logsheets Manager Tool

## 15.1. Logsheets Manager Tool

### Possible Operations

The Logsheets Manager tool enables the export of one or several logsheets to a selected destination.

A logsheet can be exported either in XML or in text format (CSV).

- XML files can be re-imported into another IPDirector workstation at a different location.
- CSV files can be re-imported into software such as Microsoft Excel ® to produce a printout.

Other operations can also be done from this tool. These are:

- creation of logsheet directory
- move of a logsheet or a log directory in another directory
- deletion of a logsheet or a log directory.

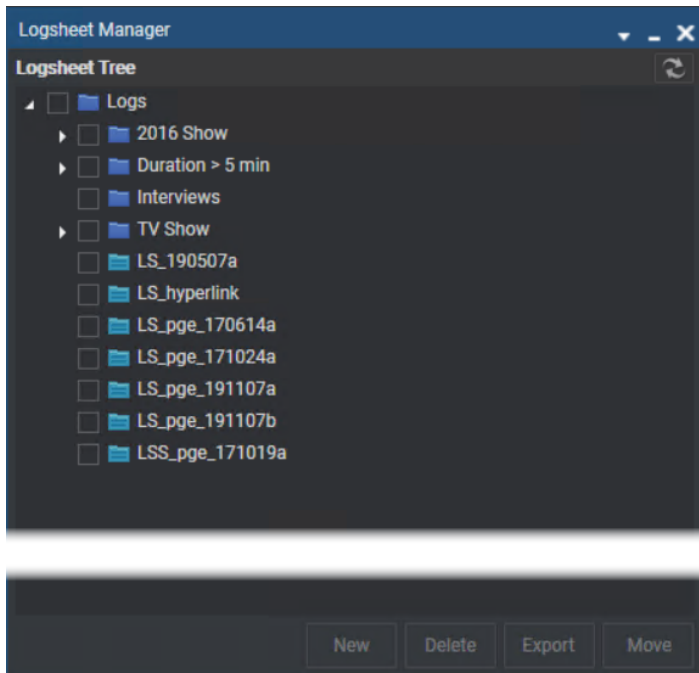


## How to Open the Logsheet Manager Tool

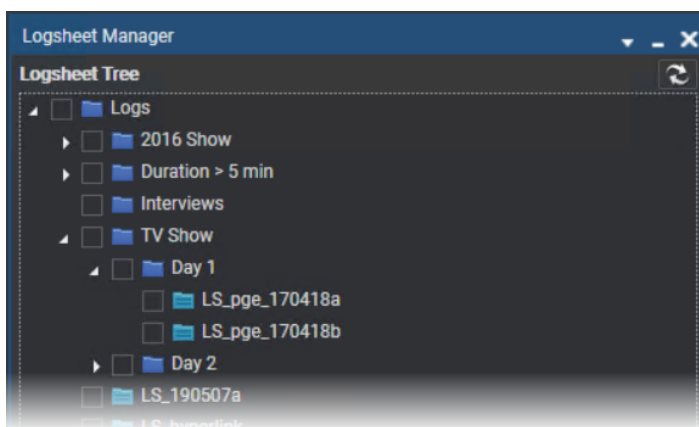
To access the Logsheet Manager tool,

1. Click **Tools** from the Menu bar of the IPDirector main window.
2. Select **Logsheet Manager** from the Tools menu.

The Logsheet Manager window opens and displays the directories (📁) and the logsheets (📄) available from the Logs tree view of the Database Explorer.



3. If needed, click the arrow next to a directory to expand it and see its content (sub-directories and the logsheets (📄) they contain).



## 15.2. Creating a Logsheet Directory

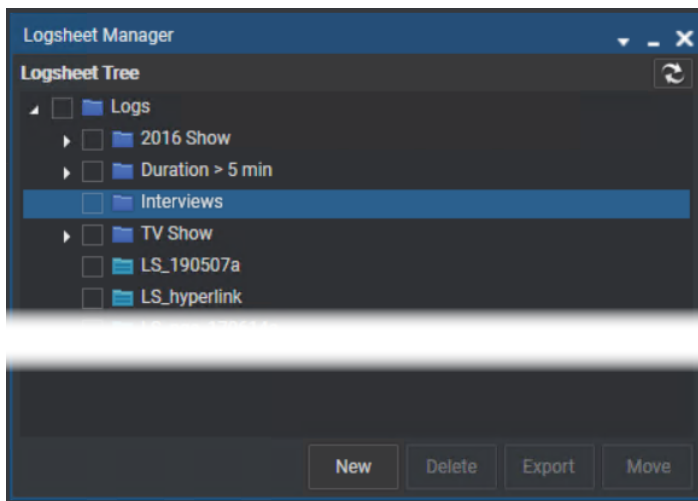
### Prerequisite

You need the following user right: **Logsheet > Create** from the Logging and Keywords tab.

### How to Create a Logsheet Directory

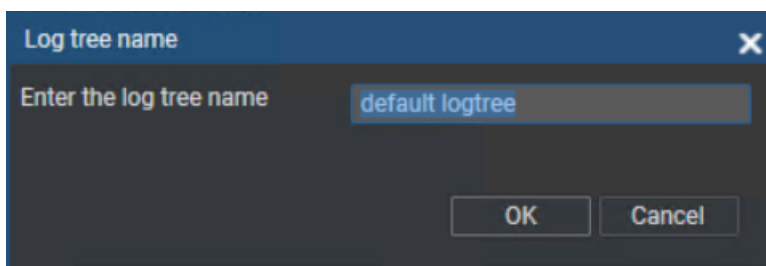
1. Select the directory or the sub-directory line where you want to create a sub-directory.

The whole line is highlighted:



2. Click the **New** button.

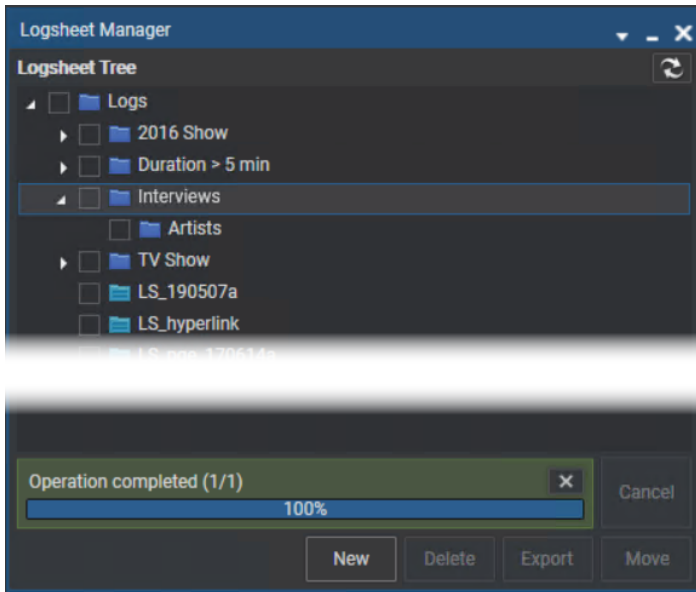
The Log Tree Name window opens:



3. Enter a name for the log directory.
4. Click **OK**.



The log directory appears in the tree and a progress bar shows the job completion status at the bottom of the window.



## 15.3. Moving a Logsheet or a Log Directory in Another Directory

### Prerequisite

You need the following user right: **Logsheet > Modify** set to **All** from the Logging and Keywords tab.

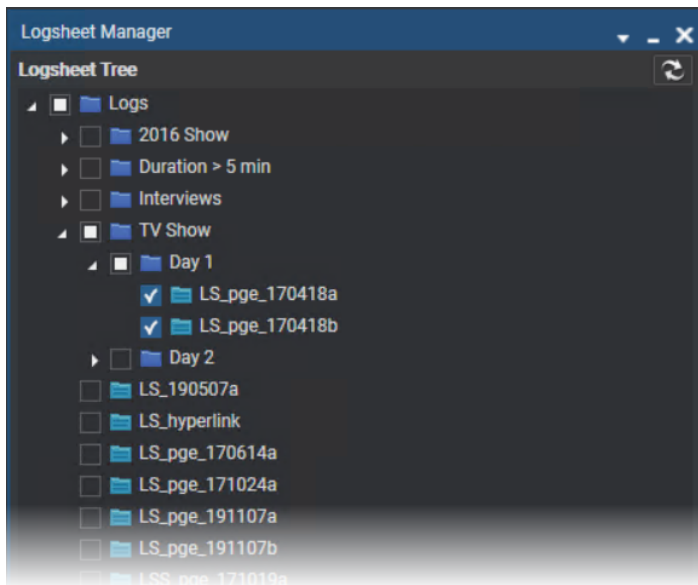
### How to Move a Logsheet or a Log Directory in Another Directory

From the Logsheet Manager tool, you can move one or several logsheets, and/or one or several log directories and the logsheets they contain, into another directory from the Logs tree structure.

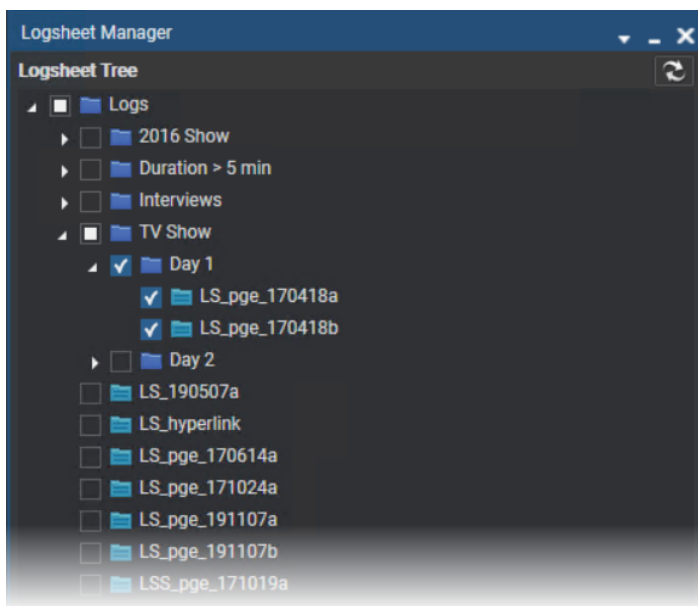


1. Select the check box(es) next to the logsheets and/or the log directories you want to move.

Example: 2 logsheets selected



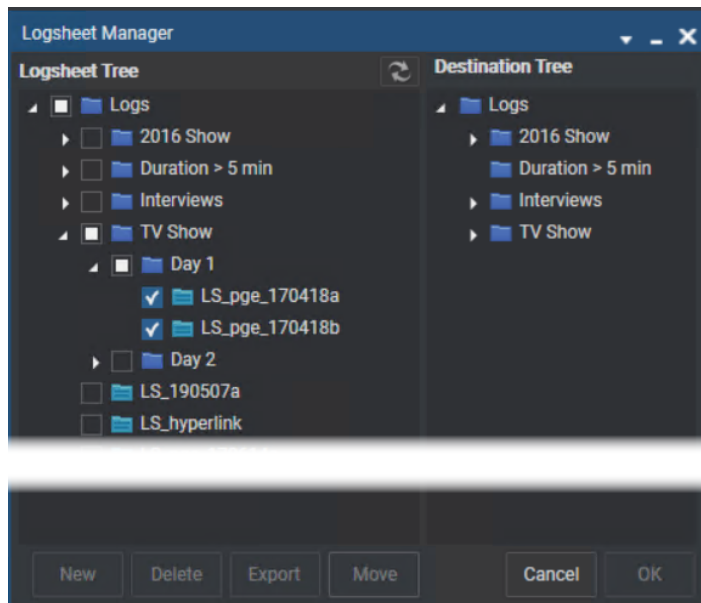
Example: 1 log directory selected





2. Click the **Move** button at the bottom of the window.

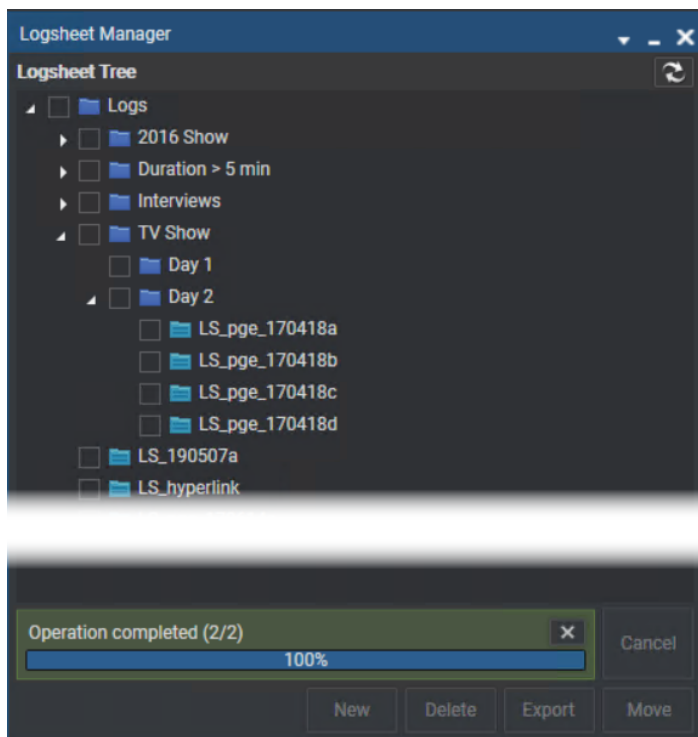
The logsheet tree is displayed on the right, in the Destination Tree pane:



3. Select a destination in the Destination tree.

4. Click **OK**.

The selected logsheets or log directories have been moved:



A progress bar shows the job completion status at the bottom of the window.

## 15.4. Exporting Logsheets

### Prerequisite

You need the following user right: **Logsheets > Export** from the Logging and Keywords tab.

### How to Export Logsheets in XML Format

From the Logsheets Manager tool, you can export one or several logsheets.

1. Select the logsheet(s) to export in one of the following ways:
  - Click the check box(es) next to the individual logsheet(s)
  - Click the check box(es) next to the log directory(ies) to select all the logsheets it/they contain.

2. Click the **Export** button at the bottom of the window.

The Export a Logsheets window opens.

3. Browse to the destination of your choice.
4. In the **Save as Type** field, select **Logsheets file (\*.xml)**.
5. Click **Save**.

The directory(ies), and sub-directory(ies), are created in the selected destination according to the Logs tree structure and the selected logsheet(s) is/are exported to this destination.

A progress bar shows the job completion status at the bottom of the Logsheets Manager window.

### How to Export Logsheets in CSV Format

From the Logsheets Manager tool, you can export one or several logsheets.

1. Select the logsheet(s) to export in one of the following ways:
  - Click the check box(es) next to the individual logsheet(s)
  - Click the check box(es) next to the log directory(ies) to select all the logsheets it/they contain.

2. Click the **Export** button at the bottom of the window.

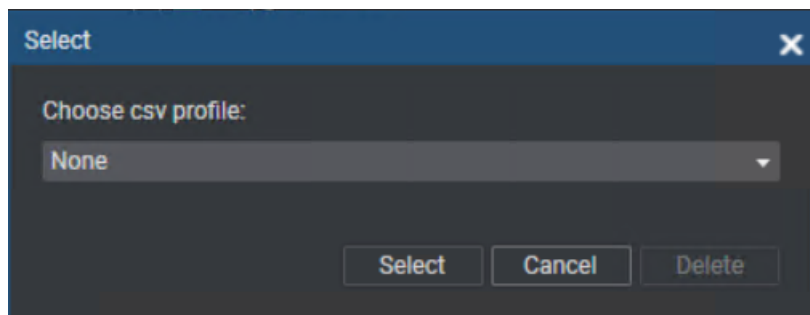
The Export a Logsheets window opens.

3. Browse to the destination of your choice.
4. In the **Save as Type** field, select **CSV file (\*.csv)**



5. Click **Save**.

The Select csv Profile window opens.

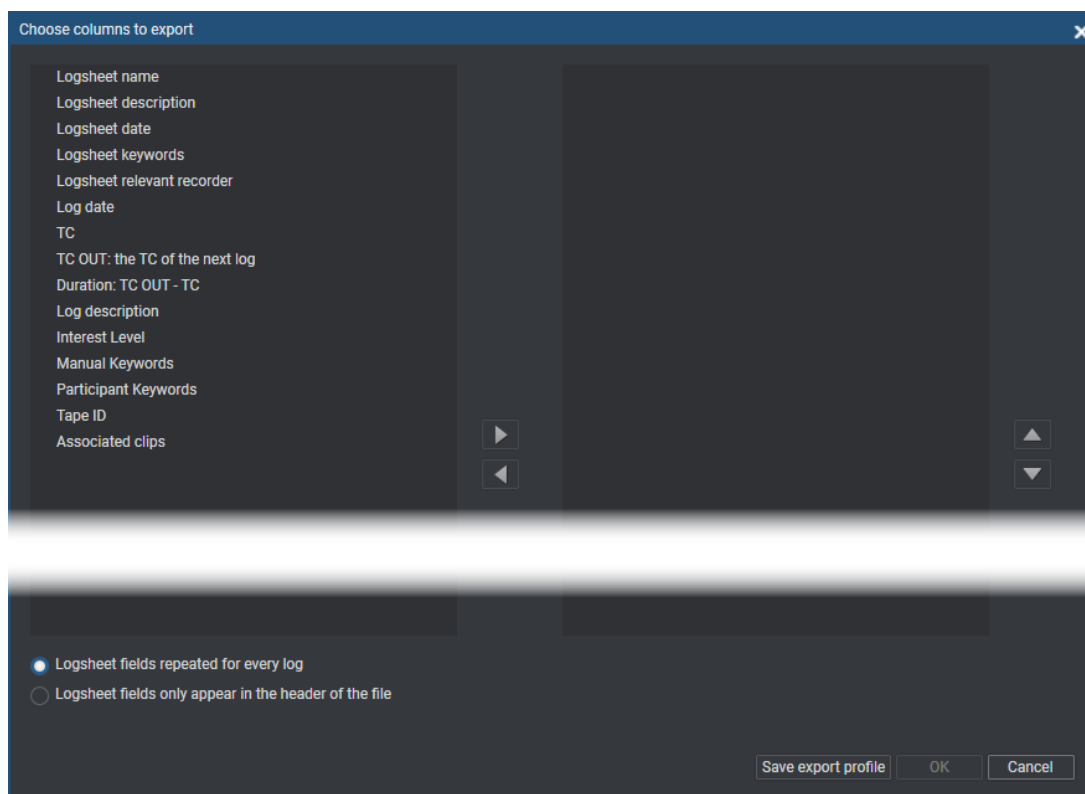


- To create a csv export profile, proceed with steps 6 to 11.
- To select a profile and export the logsheet, proceed with steps 12 to 14.
- To delete a csv export profile, proceed with steps 15 to 16.

To create a csv profile,

6. Click **Select**.

The Choose Columns to Export window opens.

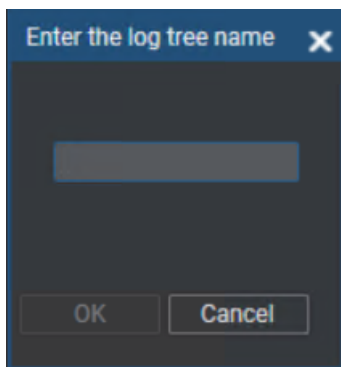


7. From the left pane, select the metadata types (columns) you want to export

8. Click the right arrow to move them to the right pane.

9. Click the **Save Export Profile** button.

The following window opens:

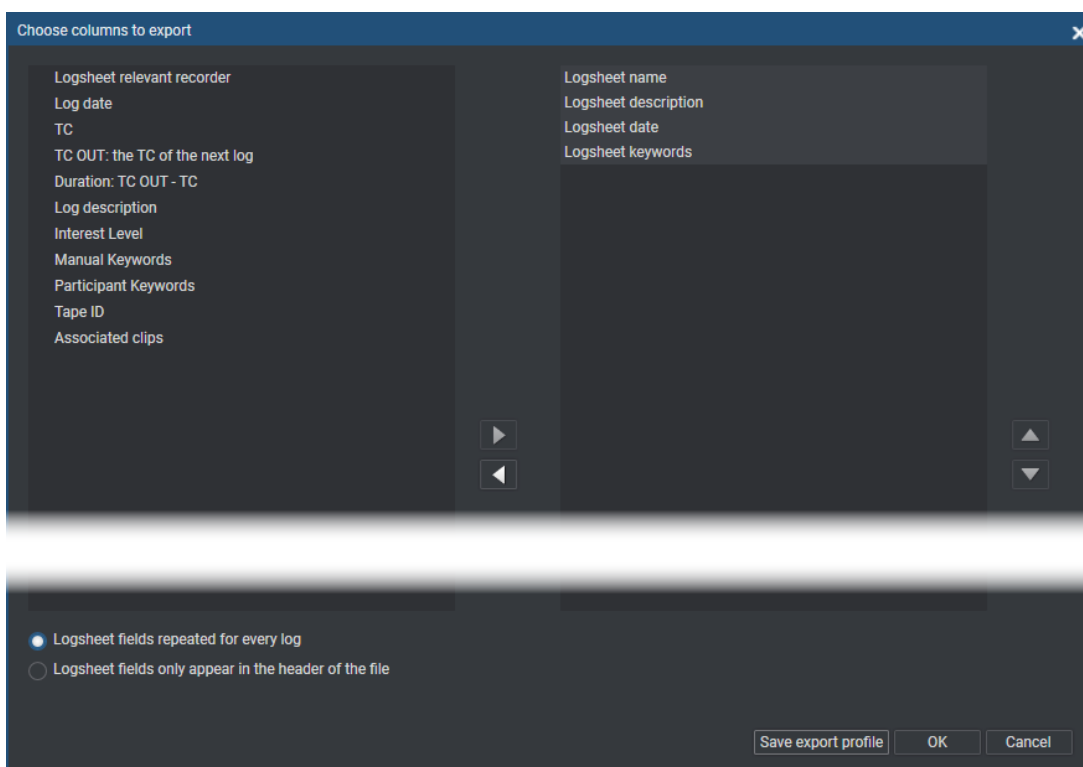


10. Enter a name for the export profile.
11. Click **OK**.

To select a profile and export the logsheet,

12. Select an export profile from the **Choose csv profile** field.
13. Click **Select**.

The Choose Columns to Export window opens and shows the metadata types selected for the profile:



14. Click **OK**.

The directory(ies), and sub-directory(ies), are created in the selected destination according to the Logs tree structure and the selected logsheet(s) is/are exported to this destination.

A progress bar shows the job completion status at the bottom of the Logsheet Manager window.



To delete a csv export profile,

15. Select an export profile from the **Choose csv profile** field.
16. Click **Delete**.

## 15.5. Deleting Logsheets

### Prerequisite

You need the following user right: **Logsheets > Delete** set to **All** from the Logging and Keywords tab.

### How to Delete Logsheets

1. Select the logsheet(s) to delete in one of the following ways:
  - To delete one or several logsheets, click the check box(es) next to the individual logsheet(s).
  - To delete a whole log directory, click the check box(es) next to the log directory(ies). This will select all the logsheets it/they contain.
2. Click the **Delete** button at the bottom of the window.
3. Click **Yes** to confirm the deletion in the warning message.

The logsheets are deleted from the IPDirector database.

## 16. IPLogger Shortcuts

Keyboard shortcuts are available to perform some operations.

They are listed in the Define Shortcuts windows which can be accessed by clicking the **Tools > Define Shortcuts** option from the menu bar of the IPDirector main window and then selecting the **[Application Name]** button on the left.

Some shortcuts can be redefined to suit individual preferences. They are displayed in regular text. Other ones cannot be modified. They appear as dimmed text.

See section ["Shortcut Definition" in the General Functions user manual](#) for more information.

Description	Current Value (editable)
New log from LIVE	Ctrl + <input type="text"/>
New log from Player	<input type="text"/>
Edit log	↑ Shift + ↵ Enter
View and edit log	Ctrl + ↵ Enter
Play / Pause	↑ Shift + P

Description	Current Value (editable)
Play	P
Var Play	Ctrl + P
Change the speed of the on-air element	< ,
Fast Forward (FF)	F
Fast Reverse (FR)	W
E/E	L
Return	X



Description	Current Value (editable)
Sanp to LIVE	
TAKE	+
Activate / deactivate 2nd controller	
Mark IN	
Clear IN	+
Goto IN	
Mark OUT	
Clear OUT	+
Goto OUT	
Turn OSD ON or OFF	+
Lock / unlock channel	+
Change LOOP mode	
Send clip to default bin	+
Append clip to default playlist	+
Send to archive (default XFile)	+
Save clip	
Play backward	+
Play forward	+



## 17. IPLogger Settings

You can define the settings for IPLogger from the IPDirector main window via **Tools > Settings > IPLogger**.

### Apply a TC offset at log creation on a live feed

To compensate for a delay in the logging relative to the image being viewed, you can enter a timecode delay in milliseconds.

If you are for example logging a sports event in London, while the event is being recorded in China, there could be a small delay between the clip and the timecode in your logsheet.

The TC delay may also be used to compensate for the reaction time of the logger, i.e. the delay between the instant the action happens and when the logger clicks the **New** button.

The offset value must be included in the range "0 – 3 600 000" msec.

### Protect Media Prefix

Determines the prefix to be added to the clip name when clips are created using the Protect Media feature.

### Warning Messages

Determines whether or not warning messages will appear when the following actions are performed:

- adding a protect media to a logsheet
- deactivating a logsheet

### Action of ENTER and CTL+ENTER shortcuts

Determines the behavior of the **ENTER** shortcut and the **CTRL+ENTER** shortcuts.

When the checkbox is selected:

- **ENTER** validates the log
- **CTRL+ENTER** goes to the next line in the **Description** field.

When the option is not selected, the behavior of the the two shortcuts is reversed.



## **NEW !** Enable Quick Logging

Allows you to quickly create a log in the open logsheet.

When a keyword is clicked from a keyword grid or dictionary, the Create a New Log window automatically opens with the timecode grabbed from the preview recorder or from the PC time and with the selected keyword.

Use **CTRL + click** to grab the timecode of media loaded on the associated player, if any.

See sections "Logging LIVE Action" on page 28 and "Logging a Recorded Clip or Train" on page 33.



Another setting exists under **Tools > Settings > Clips > General** for the automatic creation of clips based on logs. Refer to section [the section "General Settings for Clips" in the General Functions user manual](#).





EVS Broadcast Equipment is continuously adapting and improving its products in accordance with the ever changing requirements of the Broadcast Industry. The data contained herein is therefore subject to change without prior notice. Companies and product names are trademarks or registered trademarks of their respective companies.

→ [evs.com](https://evs.com)

