



# IPDIRECTOR APPLICATION NOTE

## Nearline Configuration

NOV 2020

### Corporate

Headquarters  
+32 4 361 7000

### North & Latin America

Headquarters  
+1 947 575 7811

### Asia & Pacific

Headquarters  
+852 2914 2501

### Other regional offices

Available at  
[www.evs.com/contact](http://www.evs.com/contact)

# TABLE OF CONTENTS

TABLE OF CONTENTS .....	2
INTRODUCTION .....	3
IPDIRECTOR NEARLINE CONFIGURATION FROM 7.20 .....	4
XSQUARE TEMPLATE SELECTION .....	5
NEARLINE CONFIGURATION AFTER AN UPGRADE TO 7.20 .....	6
SPECIFIC NETWORK MODE FOR NEARLINE ONLY FROM IPDIRECTOR 7.50 .....	7
STORAGE TYPES AND NEARLINE .....	7
NEARLINE AUTHENTICATION .....	9
EVS COMPONENTS.....	9
EVS USER (DVB) EXISTS ON THE STORAGE .....	9
EVS USER (DVB) DOESN'T EXIST ON THE STORAGE.....	9
TESTED SERVERS .....	11
EVS XSTORE POWERED BY MEDIAGRID – HARMONIC MEDIAGRID .....	11
MANAGEMENT THROUGH FSD .....	11
MANAGEMENT THROUGH CONTENT BRIDGE(S) .....	11
HARMONIC MEDIAGRID CONFIGURATIONS (ALREADY CONFIGURED ON XSTORE PBM) .....	12
EMC ISILON X-SERIES .....	13
KNOWN LIMITATIONS: .....	13
OTHER STORAGES .....	14

## INTRODUCTION

This document describes the important points to take into account when configuring an IP-Director Nearline.

## IPDIRECTOR NEARLINE CONFIGURATION FROM 7.20

The nearline management is defined in the Remote Installer -> Configure -> Nearline tab



From version 7.20 of IPDirector, the Backup to nearline / IP Drive, Restore (from nearline / IP Drive) to XT operations and Copy by GigE triggered from IPDirector are no longer managed by XML units, but by Xsquare templates.

The prerequisites to complete the Nearline configuration and associate a template are the following:

- Xsquare address needs to be configured and saved on "Xsquare"
- Xsquare needs to be reachable.

The following configuration has to be completed :

Add the directories that you want to manage

	Name	Destination Path	Template	Default	Storage system	Authentication Method	Username	Password	Master	Access Rights	Cluster
	Nearline_Hi	\\10.13... ..	(default templ...		<input type="checkbox"/>	Wit...	User/Pwd		<input checked="" type="checkbox"/>		
	Nearline_Hi2	\\10.13... ..	(default templ...		<input type="checkbox"/>	Wit...	User/Pwd		<input checked="" type="checkbox"/>		
	Nearline_Lo	\\10.13... ..	(default templ...		<input type="checkbox"/>	Wit...	User/Pwd		<input checked="" type="checkbox"/>		
	Nearline_Lo2	\\10.13... ..	(default templ...		<input type="checkbox"/>	Wit...	User/Pwd		<input checked="" type="checkbox"/>		

- > **Name:** Name given to the nearline folder in the IPDirector interface
- > **Destination Path:** Path of the nearline storage. It must be a UNC path accessible with CIFS protocol. Subfolders will be managed as well.
- > **Template:** Configure the Xsquare template to be used for backup to nearline operation (configuration details are provided in the next section "Xsquare Template Selection")
- > **Default:** Default Nearline
- > **Storage system:** defines the compatibility with file updates events (see next chapter in this document)
- > **Authentication Method:** defines the way the managing services will authenticate on the nearline folder (see next chapters in this document)
- > **Username:** user used by the managing services if the authentication method is set to "User/Pwd"
- > **Password:** password used by the managing services if the authentication method is set to "User/Pwd"
- > **Master:** Defines if the nearline is managed in master or slave mode. In Master mode, metadata XML files are updated according the changes made in the IPDirector. In slave mode, the metadata XML files are not updated and kept as they were when the file has been created. Only one IPDirector workgroup can manage a nearline in master mode, the other workgroups will have to manage the nearline in slave mode.
- > **Access Rights:** nearline access rights given to the IPDirector user groups.
- > **Cluster:** This setting is used if the nearline is stored on a storage accessible through multiple servers/heads. This is typically the case with EVS XStore SAN, designed for big storages.
  - > **SAN nearline postfix:** Postfix added to the nearline share folder. This option is used with EVS XStore SAN to access hidden shares where oplocks have been disabled. This postfix is added when IPDirector tries to access to a growing file.
  - > **IP Address:** IP addresses of each storage heads. IPDirector will subscribe to filesystem notification on each of these IP addresses. This option is used if the storage doesn't consolidate all filesystem notification on the storage head accessed by the SynchroDB managing the nearline.

In addition, a SynchroDB service must be configured to manage the nearline either in RestictedStandAlone either in Network mode.

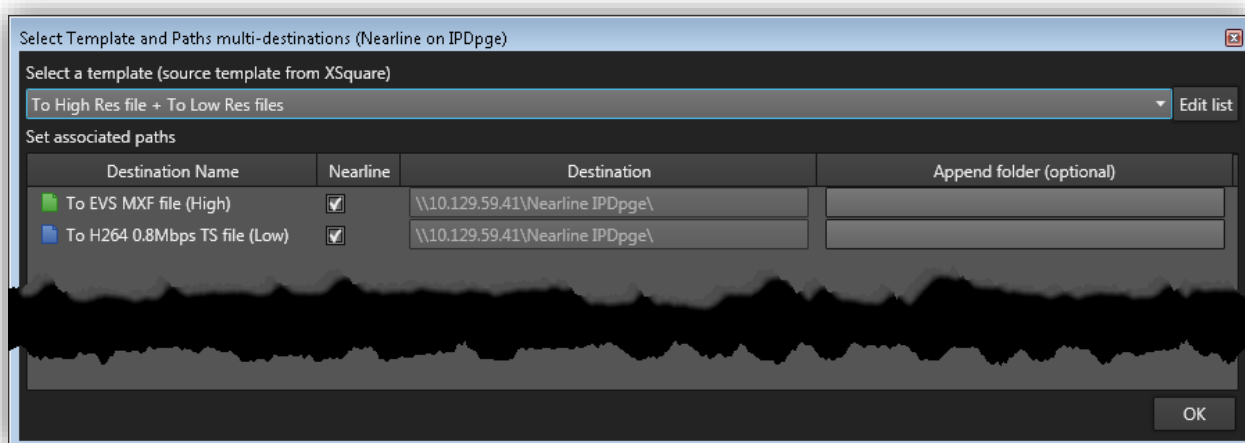
From IPDirector 7.50, a specific Network mode for Nearline can be configured.

## XSQUARE TEMPLATE SELECTION

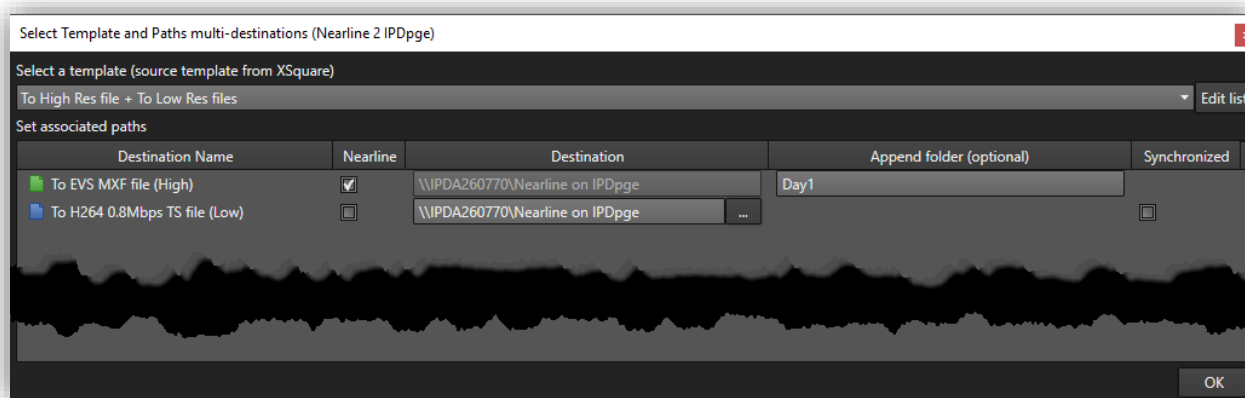
To configure the Xsquare template associated to a Nearline, select the icon "Tools" in the column.

Name	Destination Path	Template
Nearline_Hi	\\10.13...	(default templ... 

Then, select an Xsquare template. If needed, you can edit the list of Xsquare template to create a new template and select it. For template defined with multiple destination (for example Hi-Lo destinations), select the Nearline destination and specify the path(s) for the additional destination(s).



In case of a multi destinations template, there is the possibility to synchronize the backup to nearline operations to one or several destinations using the synchronized option.



## NEARLINE CONFIGURATION AFTER AN UPGRADE TO 7.20

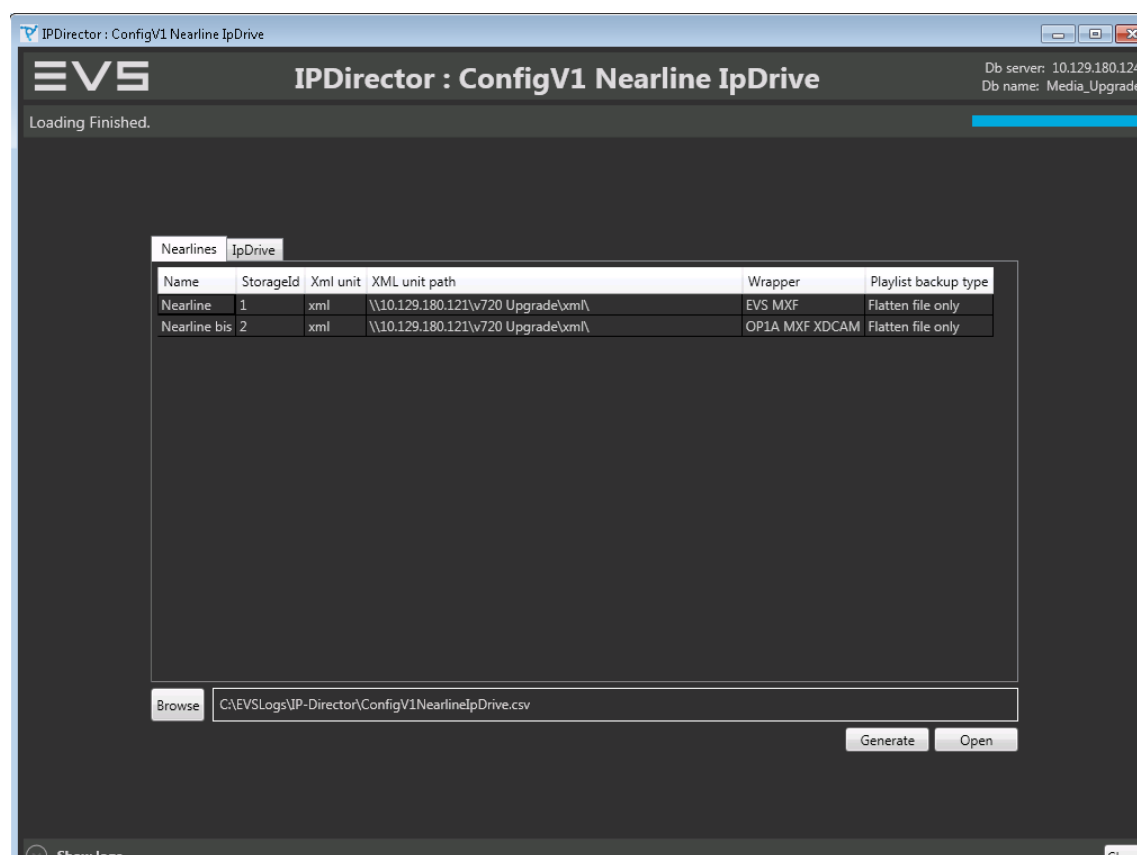
After upgrade to 7.20, XML unit, wrapper and playlist backup type are dropped from the Nearline configuration. All Nearline have to be reconfigured to associate a template.

A New plugin provides information about previous NL/IPDrive configuration:

- XML unit,
- wrapper,
- playlist backup type

Once the setup has been upgraded to IPD 7.20, all Nearline must be re-configured.

1. Check the information about the Nearline and IPDrive configuration defined in previous version. For this step, launch PLUGIN ConfigV1\_Nearline\_IPDrive to get information about:
  - a. XML unit,
  - b. wrapper,
  - c. playlist backup type
2. Define a default template in Remote Installer -> Configure -> Xsquare tab, then all Nearline and IPDrive will be associated to the Default template.
3. Configure each NL/IPDrive in 7.20 that should not use the Default template.
  - Define/Select a template with the help of the information collected in step 1.

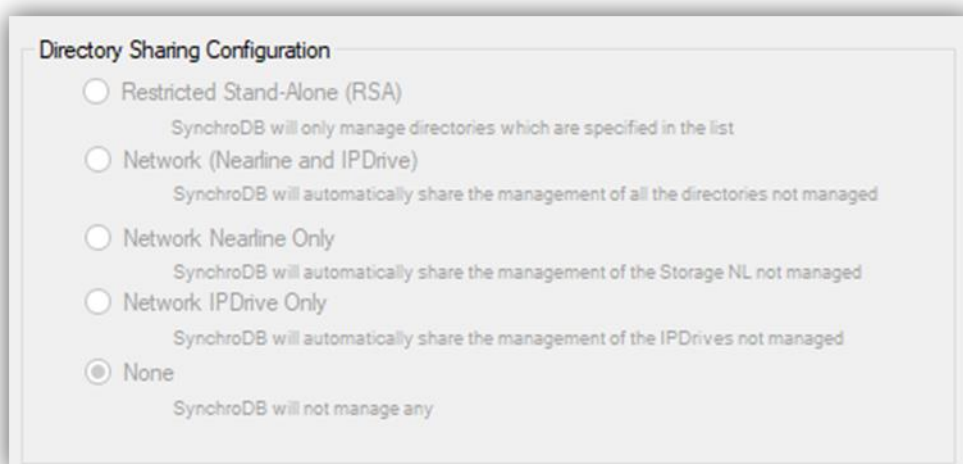


## SPECIFIC NETWORK MODE FOR NEARLINE ONLY FROM IPDIRECTOR 7.50

A SynchroDB service must be configured to manage the nearline either in RestrictedStandAlone either in Network mode.

From IPDirector 7.50, a specific Network mode for “Nearline Only” can be configured.

Either the « Network Nearline Only » and « Network IPDrive Only » mode has to be used, either the « Network (Nearline and IPDrive) » mode has to be used. The « Network » mode can not be mixed with « Network Nearline Only » and « Network IPDrive Only » mode.



## STORAGE TYPES AND NEARLINE

The nearline management in IPDirector can use FileSystemWatcher events to be aware of a file creation, update or deletion on the storage system. But these FileSystemWatcher events are not supported by all storage Operating Systems.

These events are really useful for the IPDirector because the IPDirector DB is immediately updated when something is changed on the nearline storage.

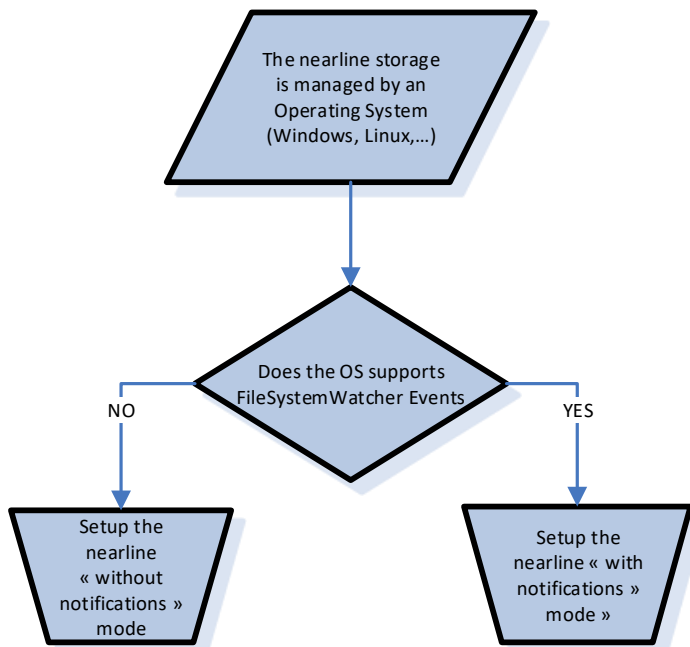
If the storage declared as the nearline is managed by a Windows operating system, it's pretty sure that the FileSystemWatcher events will be supported.

If the storage is managed by a Linux Operating System the FileSystemWatcher compatibility depends on the SAMBA server version and on its configuration.

To be compatible with the FileSystemWatcher events the OS must use a SAMBA server with a version higher than 3.00.25 (actually tested with the version 3.00.28) and the “notify” option must be enabled.

A FileSystemWatcher client is available at EVS to test the events compatibility of the nearline storage. If you are not sure of the storage configuration it is better to proceed to a test with the test client.

If the storage supports the FileSystemWatcher you can configure the nearline Storage Type to “With Notifications” in the Remote Installer otherwise this option must be set to “Without Notifications”





## NEARLINE AUTHENTICATION

As the nearline storage could not be an EVS hardware the IPDirector should be able to access to the files stored on the nearline in any cases without user prompt.

## EVS COMPONENTS

The component that must be able to access the nearline are :

- > The Master SynchroDB service or any SynchroDB service that could become Master
- > The SynchroDB service that manages the nearline or any SynchroDB that could manage the nearline (in network mode)
- > The software players (and potentially every IPDirector)
- > The XFile or XTAcess applications

The authentication is based on the Windows authentications processes. We can describe 2 different scenario.

## EVS USER (DVB) EXISTS ON THE STORAGE

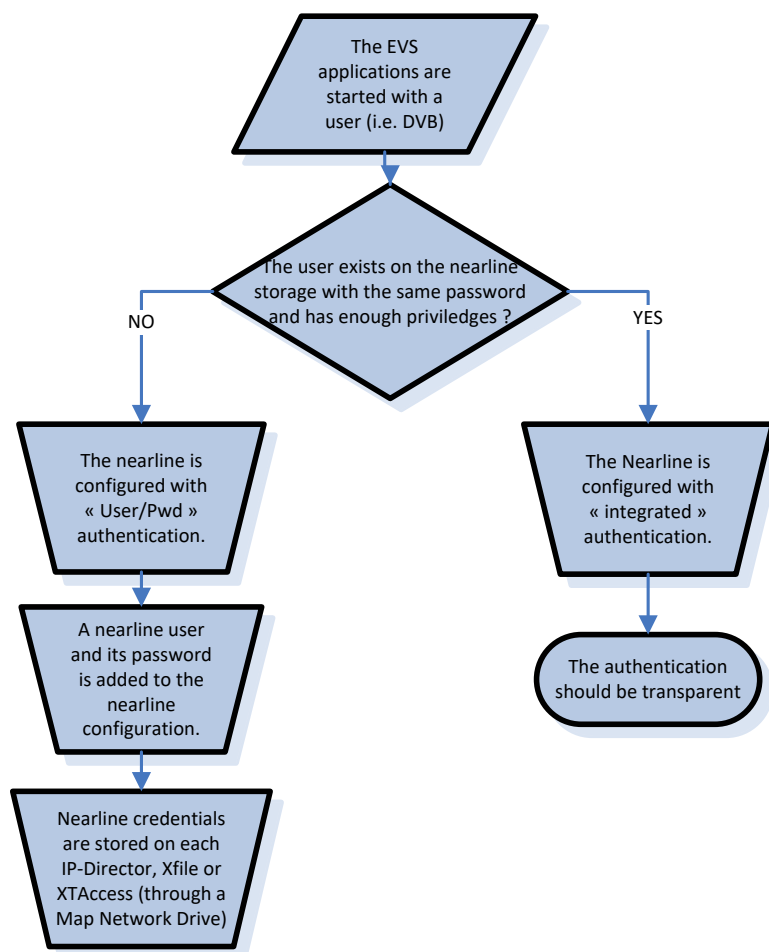
If every application is started with a user and this user exists locally on the nearline storage with the same password, the authentication should be automatic and transparent for the user.

Take into account that, by default, a Windows operating system disables the network access for users without password. It could be blocking for storages hosted on a Windows OS.

## EVS USER (DVB) DOESN'T EXIST ON THE STORAGE

If the user used to start the applications doesn't exist on the storage system the synchroDB must be configured to use another user when it tries to connect to the nearline. This is done by changing the authentication mode to "User/Pwd" in the remote installer and by adding the nearline user and password in the same interface. This change is taken into account after a SynchroDB service restart.

This configuration is not used by the IPDirector application (the Software player) neither the Xfile nor XTAcess. The user and password must be stored in the user profile launching these applications by adding a Map Network Drive or by opening the nearline share and store the user and password when windows prompts for authentication.



## TESTED SERVERS

# EVS XSTORE POWERED BY MEDIAGRID – HARMONIC MEDIAGRID

### MANAGEMENT THROUGH FSD

The Mediagrid client driver allows notifications to be received. The FSD connects directly content directors to access the mediagrid. When there are several content directors, a common host name is usually set for all the content directors. In order to have some load balancing between the content directors, the host name must be used as nearline path.

The FSD needs to be installed on

- > Nearline manager IPDirector
- > MasterSychroDB IPDirector
- > All clients IPDirectors (or IPBrowse) that need to browse files on the mediagrid.

When doing this, the nearline can be configured with the "Notifications" storage system to manage the file events.

The FSD has a logon screen. In that screen, choose authentication for the whole machine. When the driver is authenticated to the whole machine on management IPDirectors, authentication type can be set to "Integrated".

Network provider order must be set to : 1-Windows Network | 2-Omneon FSD

### Limitation - maximum number of nearllines managed through FSD

- > Default : WinFSD allows to watch up to 7 nearlines. If more than 7 nearlines managed, it throws an error: omWatchTooManyCallbacks.
- > Registry Key : Number of nearlines managed per synchroDB can be extended to 10 via the following registry key in more than 7 Nearline are required (Note, the maximum number of nearlines managed per synchroDB is 10)
  - o HKEY\_LOCAL\_MACHINE\SYSTEM\CurrentControlSet\Services\OmRdr\Parameters\MaxDirWatch Size (REG\_DWORD(32)) = 11

### MANAGEMENT THROUGH CONTENT BRIDGE(S)

The mediagrid can also be accessed through a content bridge. The content bridge permits a SMB access to the file system. A content bridge then accesses the mediagrid using a content director.

Modifications made by a content bridge get notified to other users of the same content bridge but notifications made through a different content bridge or through the FSD are not received by a content bridge.

If more than one content bridge is present in the system, a host name can be setup to load balance between the content bridges.

There are two options to setup an IPDirector nearline through a content bridge:

1. Only one content bridge is used for writing and reading on the nearline: configure the IP Address or host name of the content bridge as the nearline path
2. There are several content bridges: a host name must be setup to load balance between the content bridges. The host name is used as main nearline path. The individual IP Addresses of the content bridges are added as cluster IP Addresses.

In all cases, the nearline needs to be managed in user/password. No further authentication is needed on management IPDirectors. Client browsing stations (IPDirector or IPBrowse) MUST be authenticated on the storage through the correct path.

For performance reason, XTAccess/XSquare can be setup to write the A/V files through the FSD path and the evs.xml file through the content bridge. IPDirector will get notified of creation/update/delete of the evs.xml and will find the A/V accordingly.

ContentBridge 3.x and 4.x does not support file change notification in subfolders. Nearlines on ContentBridges must then be flat. This issue is fixed in ContentBridge 5.0.0.0

## HARMONIC MEDIAGRID CONFIGURATIONS (ALREADY CONFIGURED ON XSTORE PBM)

There are two important configurations to be made on the mediagrid itself:

1. Make sure the mediagrid is configured to be case insensitive. For the content bridges, similar lines than the following need to be in the configuration file:  

```
CB 172.16.1.200 mgbo mgadmin 1234 caseinsensitive
MG 172.16.1.200 mgbo mgadmin 1234 caseinsensitive
CIFS_CASE_SENSITIVE=YES
```

It is really important to keep the option "caseinsensitive" for the mount point, otherwise the ContentBridge will be globally case sensitive which is not supported by EVS
2. The mediagrid stores files as slices. By default, the size of a slice is very large and not adapted for our small evs.xml files. The mediagrid can be configured to reduce the size of a slice for some file extensions. Make sure this is done for .xml files and .ipdnl (live bit) files.

## COMPATIBILITIES (XSTORE PBM & HARMONIC MEDIAGRID)

The following versions have been tested and validated for specific projects:

Mediagrid	FSD 4.0.1.4	FSD 4.0.1.2	FSD 4.0	FSD 3.5	FSD 3.4
IPDirector	7.90.32	7.80.20	7.30.24	6.70.09 rev 205	6.57.24
IPWeb	2.8	2.7	Not tested	Not tested	Not tested
Multicam	16.4	16.3	14.02.33	12.05.68	12.05.58
Xsquare Suite	3.16.6	3.16	3.9.14	3.5.10	3.2.13
IPLink	2.4.21	Not tested	2.4.16	2.1.6	not tested

Last tested FSD version: 4.0.1.4

Known incompatible versions: 2.4.0;3.1.0 (these versions could cause nearline instability issues)

<b>Authors</b>	Christophe TENRET	27-nov.-20
<b>File name</b>	Application_Note_Nearline_config_7.91.docx	Page 12 of 14

## EMC ISILON X-SERIES

**Please note that not all versions of IPDirector have been tested with Isilon storage. Check with EVS Support if your IPDirector/Isilon couple has been tested and which workflows are supported.**

Isilon X-Series nodes have been tested with IPDirector with file notifications (Storage System = With notifications).

This validation has however a few prerequisites :

- > The SynchroDBs should always point to the same Isilon node if the Smart Connect function is used to access the Isilon cluster. This is achieved by configuring host files on the synchroDBs (cluster name points to one node IP address). The other IP Directors can use the round robin mechanism.
- > File and folder renaming is not supported once they have been detected by IPD.

### COMPATIBILITIES

The following versions have been tested and validated for specific projects:

Isilon OneFS	9.0	8.0.0.4	8.0.0.2	7.2.1.2 + Patch 170790
IPD	7.90	7.20	7.10	7.00.36 rev 253
XSquare Suite	4.0	3.8	3.6	3.5.10

Note, from OneFS 9.0 there is a new parameter for the notification mode configuration

- > isi\_gconfig registry.Services.lwio.Parameters.Drivers.onefs.ChangeNotifyDedupFrequency
  - The value of this parameter has to be set to 1. It means you will receive a notification for each update.

### KNOWN INCOMPATIBLE VERSION:

There has been a problem with the notifications sent by the Isilon system since version 7.0.2.7 of the system and up to version 7.2.1.4. In these version, it is not possible to manage the Isilon storage in "With Notification" mode. It is, however, possible to manage the system in "Without Notification" mode.

This issue is solved in the patch 170790 from Isilon and solved from version 8.0.1.1.

Last tested Isilon OneFS version: 8.0.0.4. which includes a mandatory patch since version 7.2.1.2

This patch is missing in OneFS 8.0.1.0 therefore an upgrade to 8.0.1.1 is mandatory to manage the storage in *With Notifications* mode with IPD.

### KNOWN LIMITATIONS:

OneFS 8.0.1 and 7.20 : When copying files from a Mac, files appear and grow until finished however when copying from PC, the files do not appear in IPD until they are finished (with correct length).

## OTHER STORAGES

Please contact product managers to have the test status for other storages.