



# IP DIRECTOR APPLICATION NOTE

## Remote Installer Plugins

June 2019

### Corporate

Headquarters  
+32 4 361 7000

### North & Latin America

Headquarters  
+1 947 575 7811


### Asia & Pacific

Headquarters  
+852 2914 2501

### Other regional offices

Available at  
[www.evs.com/contact](http://www.evs.com/contact)

# TABLE OF CONTENTS

TABLE OF CONTENTS .....	2
INTRODUCTION .....	4
PLUGINS .....	5
IPDIRECTOR: API.....	5
NOTIFICATIONS.....	5
OBSERVERS .....	5
CLEAR BUTTON.....	5
IPDIRECTOR: CHECK DB.....	6
CHECK DATABASE CONFIGURATION .....	6
VERIFY LIVE PAM CORE LICENCE.....	6
CONFIGURATION GENERATOR .....	7
GENERATE FILE .....	7
EXPORT OLD NEARLINES CONFIGURATION.....	8
IMPORT EXPORT .....	10
MERGE KEYWORDS  .....	11
NESTED TREE PLUGIN .....	12
ELEMENTS TO BIN .....	13
ADD TO BIN .....	13
IPDIRECTOR : STORAGE .....	14
SET AN ONLINE XT TO OFFLINE .....	14
SET AN ONLINE NEARLINE TO OFFLINE.....	14
CLEAN OFFLINE XT REFERENCE FROM DB.....	14
CLEAN OFFLINE NEARLINE REFERENCE FROM DB .....	14
IPDIRECTOR : THUMBNAILS .....	15
RECREATE FAILED THUMBNAILS.....	15
DETECT MISSING THUMBNAIL FILES.....	15
PURGE EXTRA THUMBNAIL FILES.....	15
IPDIRECTOR : TIMELINE 2 BINS .....	16
ADD TIMELINE ELEMENT TO A BIN.....	16
ADD ORPHANED TIMELINE ELEMENTS TO A BIN.....	16
IPDIRECTOR : USERRIGHTS.....	17
APPLY THE PROFILE USER-RIGHTS TO A GROUP OF USERS .....	17
IPDIRECTOR : XML QUEUES.....	18
INSTALLER REMOTE BEPLAY .....	19
THESAURUS FILE CONVERTER .....	20
USER PLUGIN .....	21

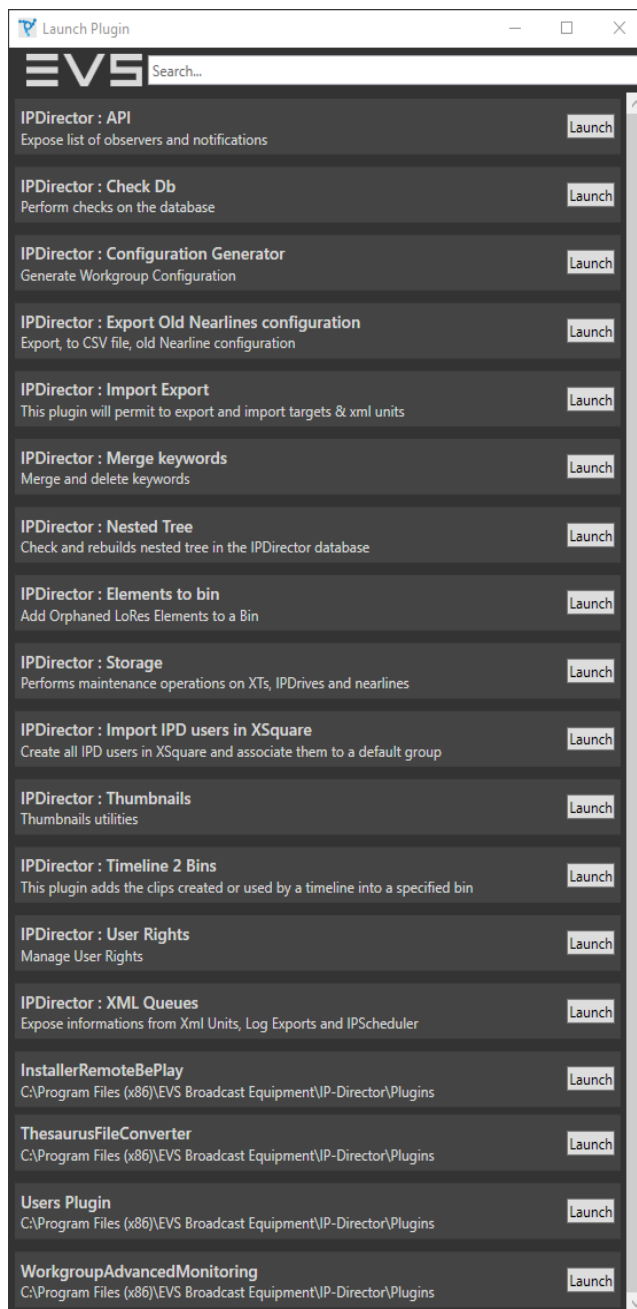
IMPORT.....	21
EXPORT.....	21
WORKGROUP ADVANCED MONITORING  .....	22

## INTRODUCTION

This document describes the plugins provided for IP Director and available in the remote installer.

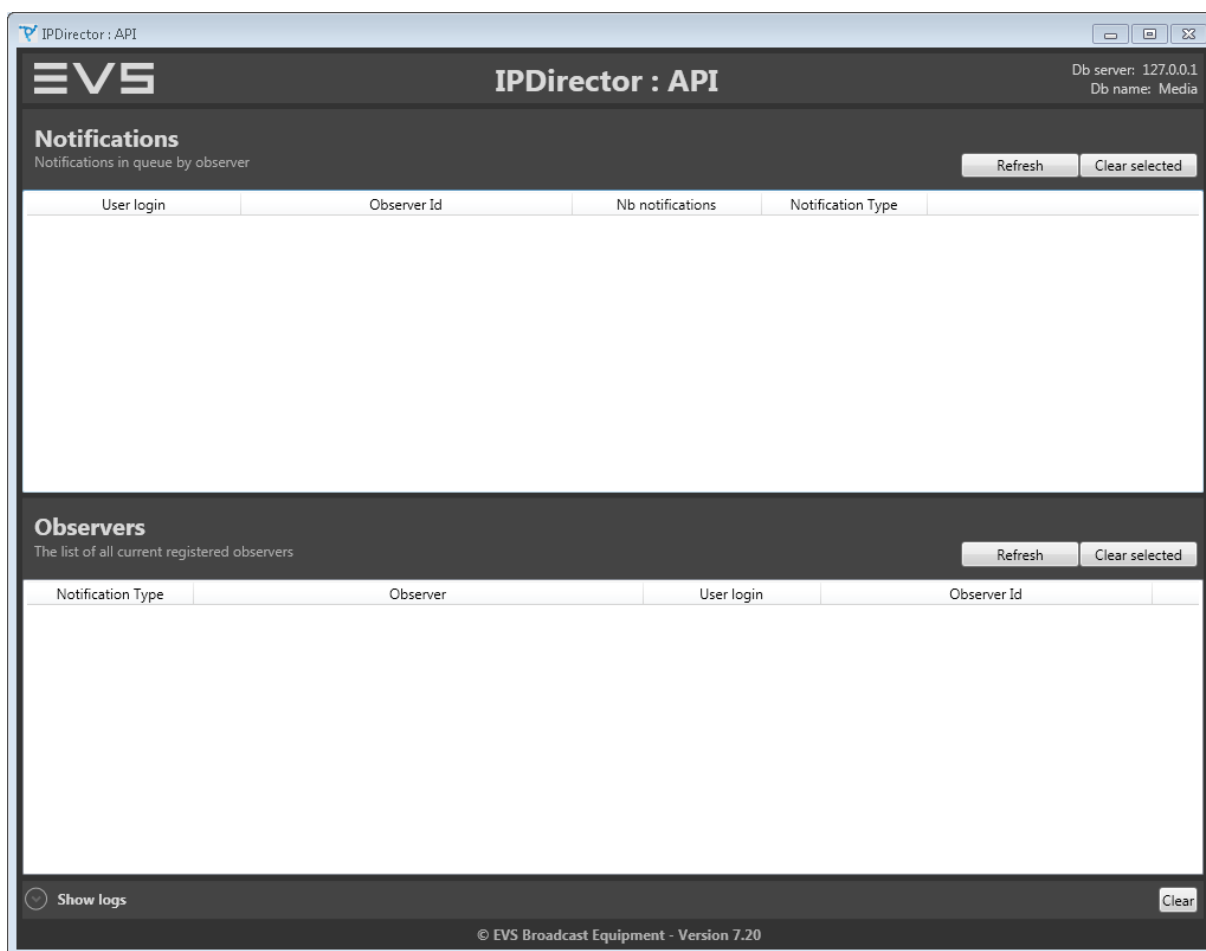
You will find the basic description of the administrative tasks available in these plugins.

To start a plugin, start a remote installer in edit mode , click on “plugins” and open the plugin you need.



## PLUGINS

### IPDIRECTOR: API



This plugin shows the list of applications subscribed to API notifications (aka Observers)

It also displays if notification are stored in the queue and for which observer

### NOTIFICATIONS

- > The Plugin lists all notification remaining in the notification queue
- > These notifications are kept in the database because the observer was not available when the notification has been raised for the first time.

### OBSERVERS

- > The Plugin lists the observers registered in the IP Director database
- > The list contains the event type and the observer URL

### CLEAR BUTTON

- > The Plugin resets the Observer and Notification list.

## IPDIRECTOR: CHECK DB



This plugin checks the compatibility of the database and the SQL server 2008 R2 used by an IPDirector v7 workgroup.

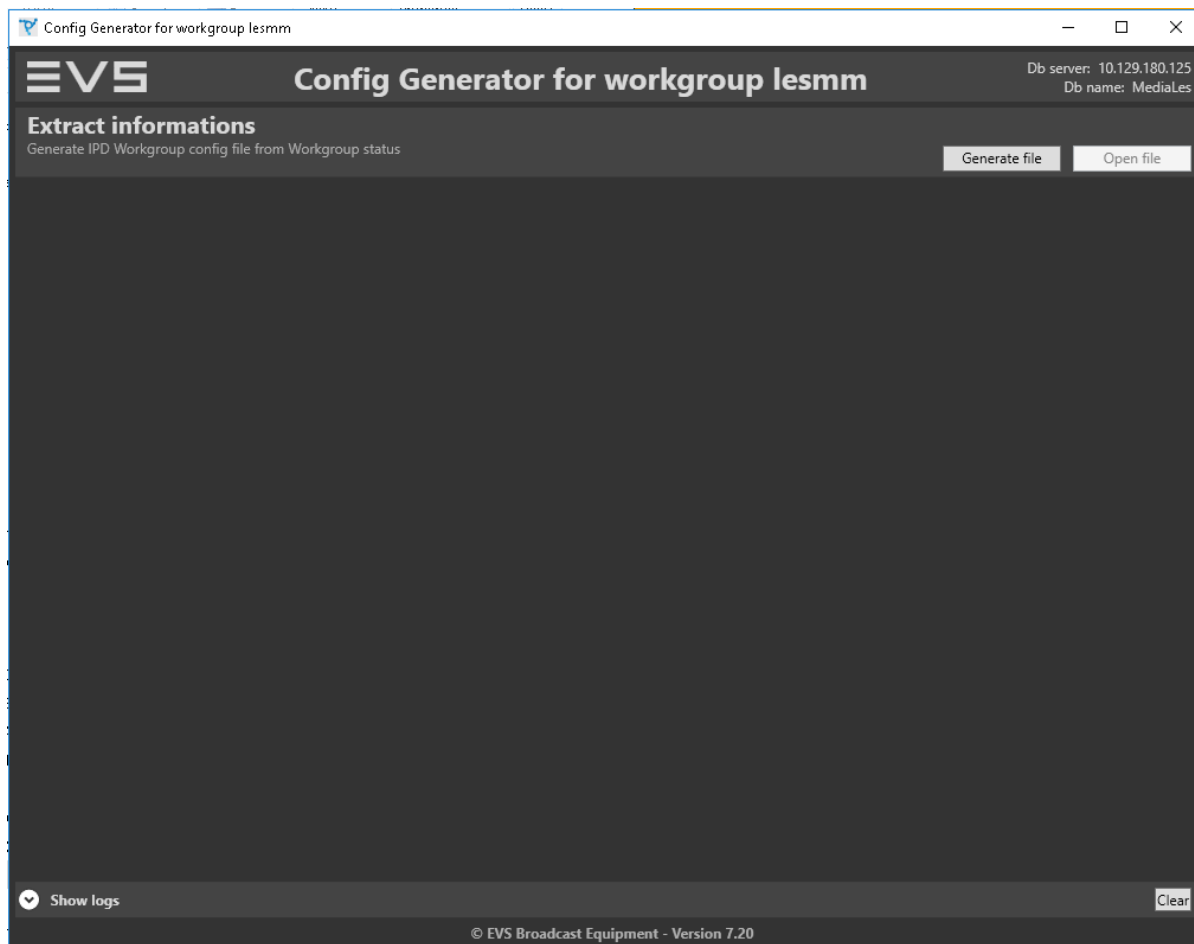
### CHECK DATABASE CONFIGURATION

- > Check the SQL version (SQL 2008 only)
- > Check the Fulltext Search service installation
- > Disable the Fulltext Search signature internet update
- > Check that the database is Fulltext enabled
- > Check that the fulltext indexes are populated automatically
- > Check that the fulltext catalogs are correctly rebuilt
- > Configure the Fulltext Search noise files
- > Restart the Fulltext Search service to take the modifications into account

### VERIFY LIVE PAM CORE LICENCE

- > Checks the DB server configuration to support Live PAM engine licences
- > Checks that XSecure support floating licences.

## CONFIGURATION GENERATOR



This plugin exports the IP director workgroup configuration in an XLS file

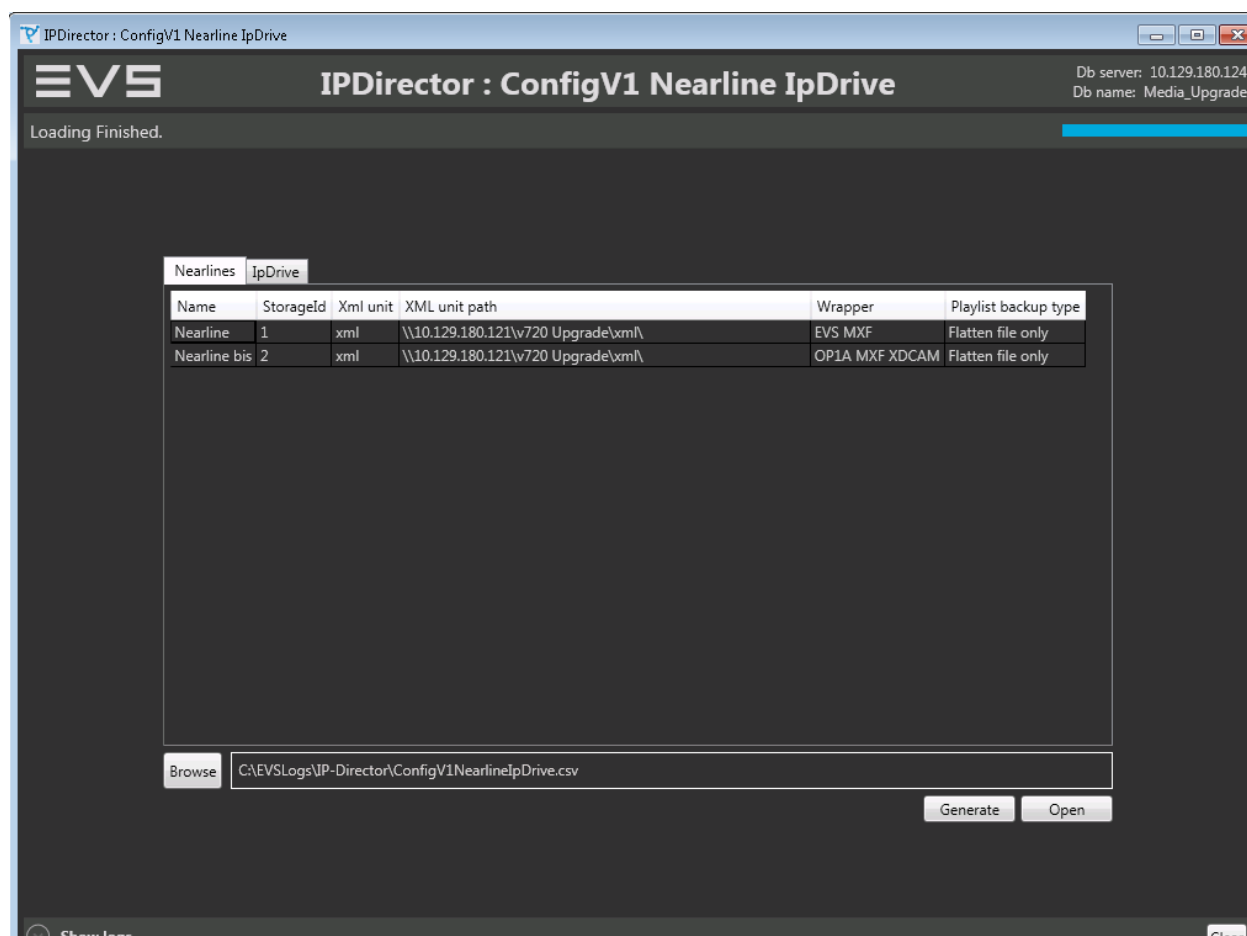
### GENERATE FILE

- > Choose the workgroup for which you want to export the configuration.
- > The configuration will be exported in an XLS file in the c:\EVSLogs\IP-Director folder.
- > Things exported in the XLS file :
  - > XT servers detected by IP Director
  - > Player and Cam names
  - > XT and nearline management
  - > Player associations (with IP Directors)
  - > IP Director workstation (with configuration)
  - > Workgroup configuration ("configure" in the remote installer)
  - > List of XML Units, Targets, nearlines, IP Scheduler jobs, log exports...
  - > API configuration
  - > ATS (Archive Transfer Service) version and indication on which workstation(s) the service is running and is master
  - > Registry service version and indication on which workstation the service is running.

## EXPORT OLD NEARLINES CONFIGURATION

From version 7.20 of IPDirector, the Backup to nearline / IP Drive, Restore (from nearline / IP Drive) to XT operations and Copy by GigE triggered from IPDirector are no longer managed by XML units, but by Xsquare templates. After upgrade to 7.20, XML unit, wrapper and playlist backup type are dropped from the Nearline and IPDrive configuration. All Nearline and IPDrive have to be reconfigured to associate a template.

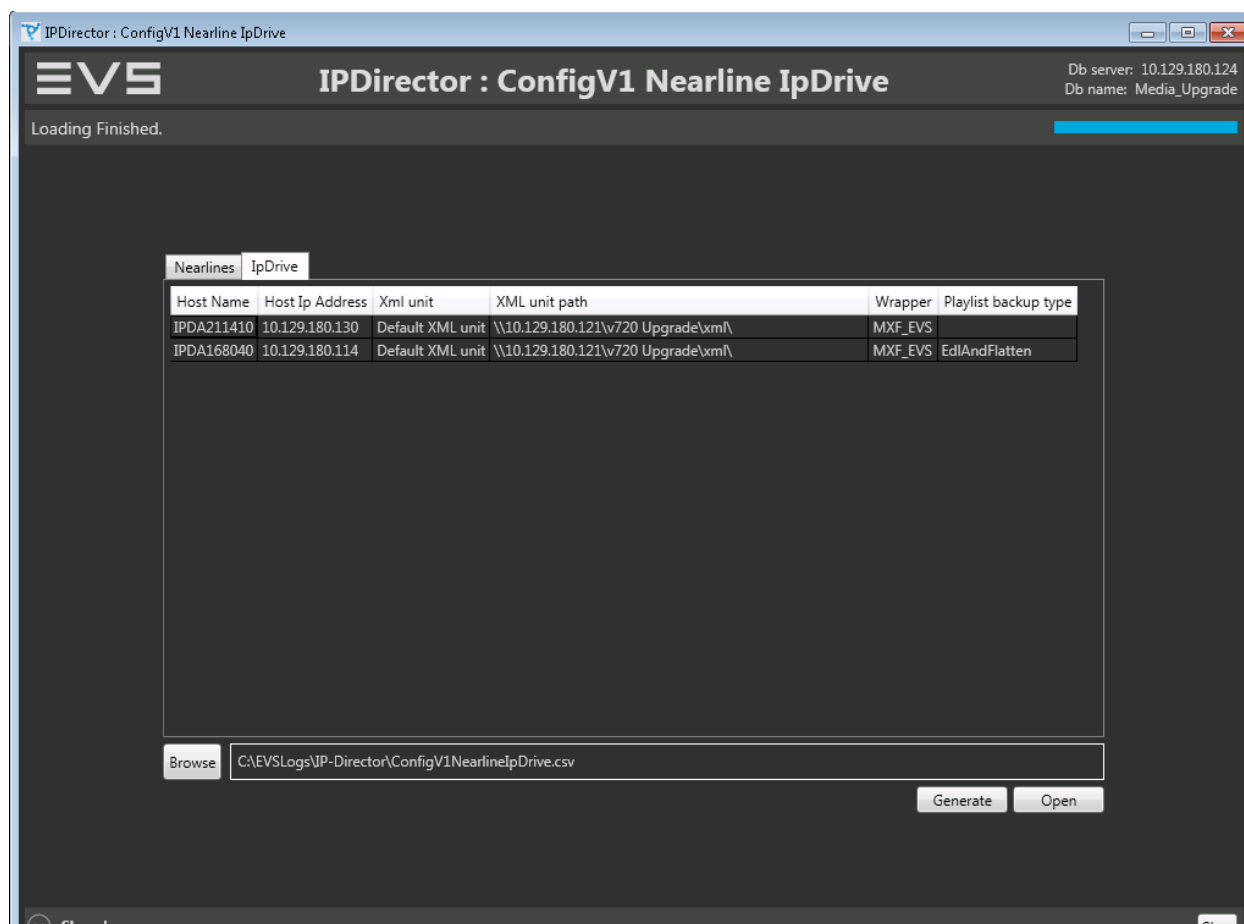
This plugin provides information about the previous Nearline and IPDrive configurations, in order to help administrator to select/define a corresponding Xsquare template.



The information provided on the tab "Nearlines" are the following:

- Name of the Nearline;
- StorageID;
- XML unit;
- XML unit path;
- Wrapper;
- playlist backup type.

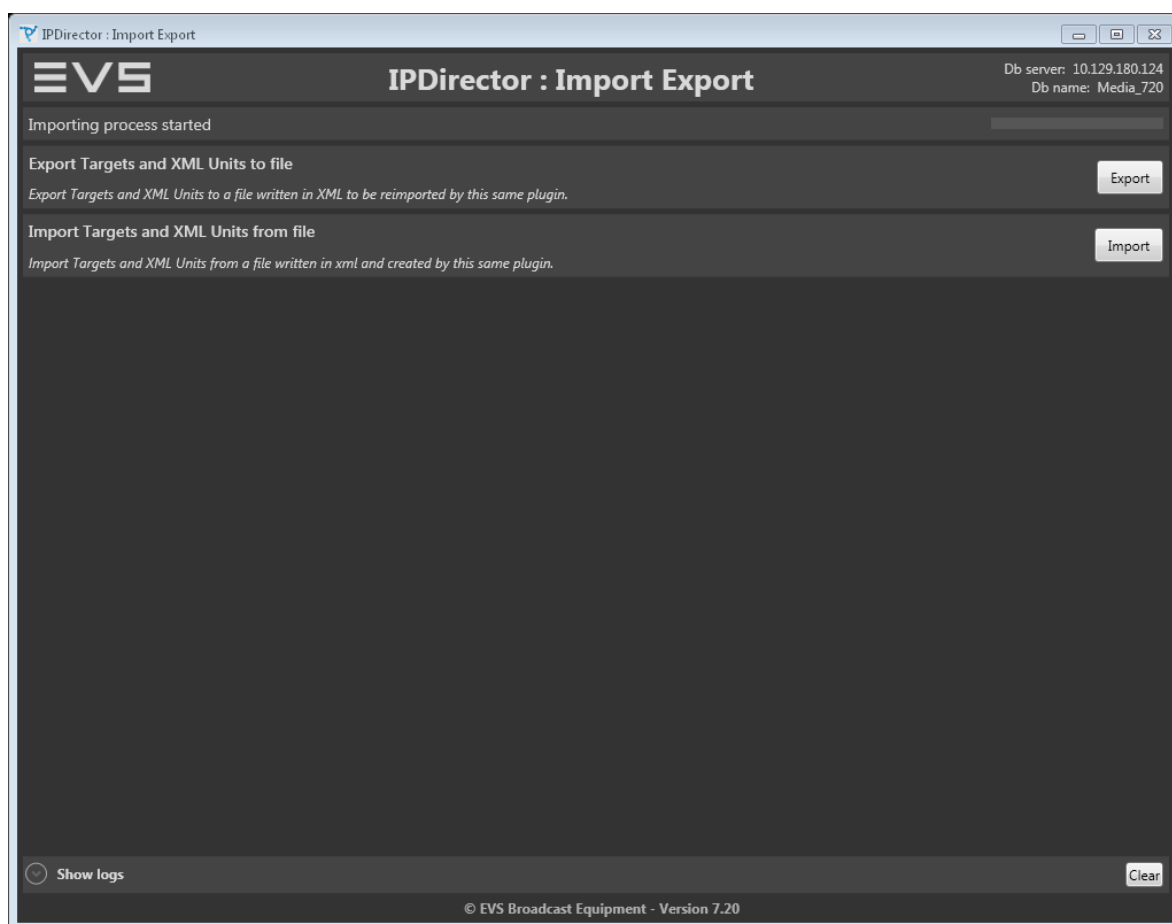




The information provided on the tab "IPDrive" are the following:

- Host Name;
- Host IP Address;
- XML unit ;
- XML unit path;
- Wrapper ;
- playlist backup type.

## IMPORT EXPORT



This plugin will permit to export a part of a workgroup configuration and import it into another workgroup.

You will be able to

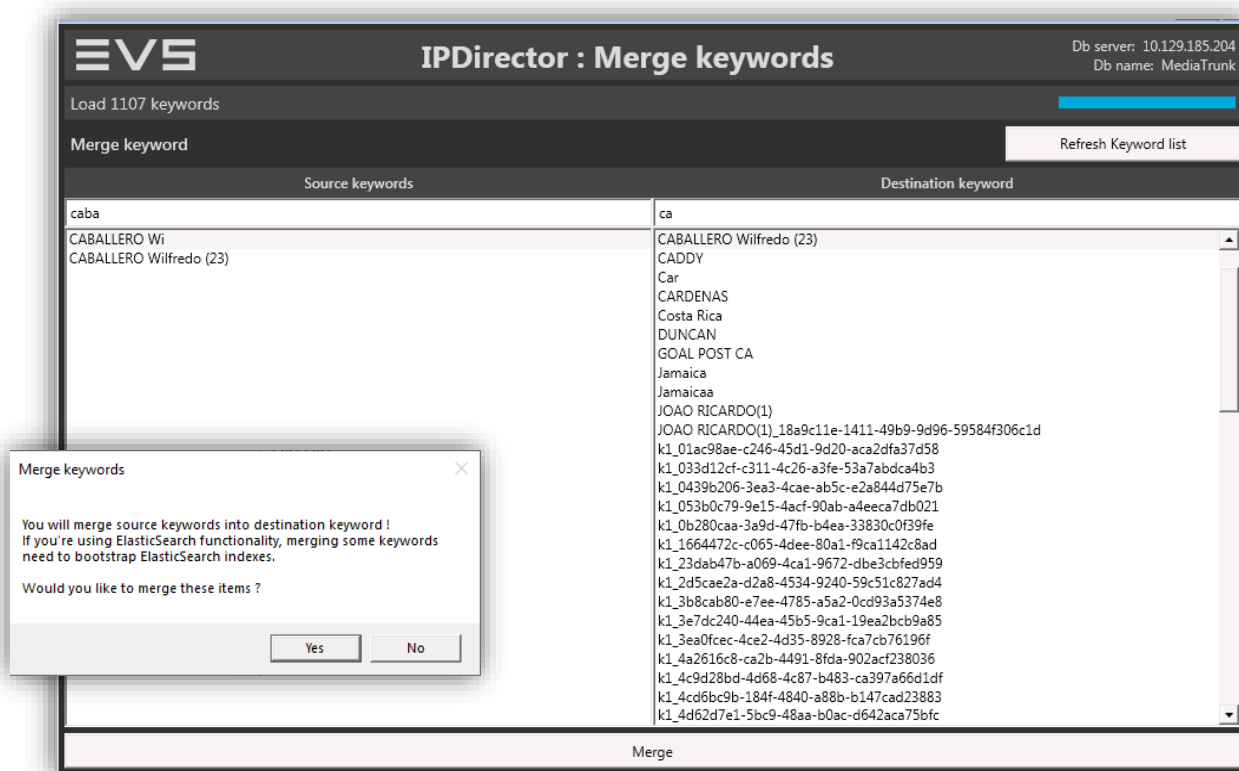
- > export Targets and XMLUnits to XML
- > import Targets and XMLUnits from XML

## MERGE KEYWORDS

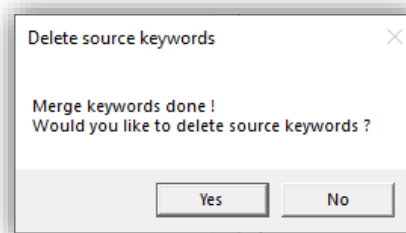
From version 7.70 of IPDirector, there is the possibility to merge/update keywords.

Based on Source Keyword and a Target Keyword the keyword references can be updated to new one for the following elements :

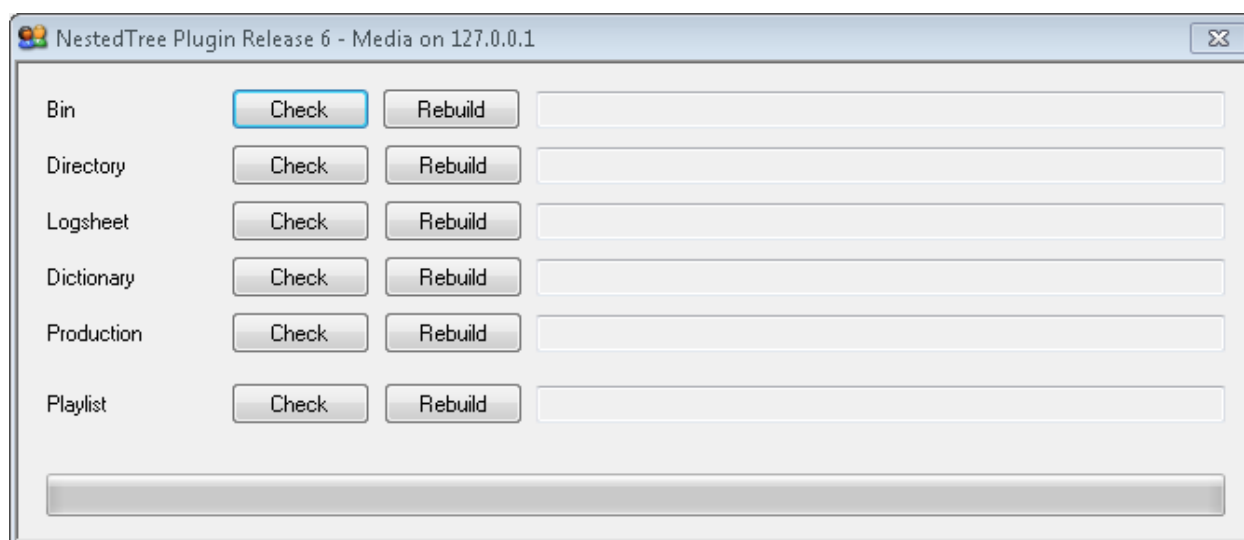
- Assets
- Edits
- Logs
- Logsheets
- Playlists
- Timelines
- Keyword grids (duplicates are removed)
- Keyword dictionaries



The possibility is also given to delete the source keywords



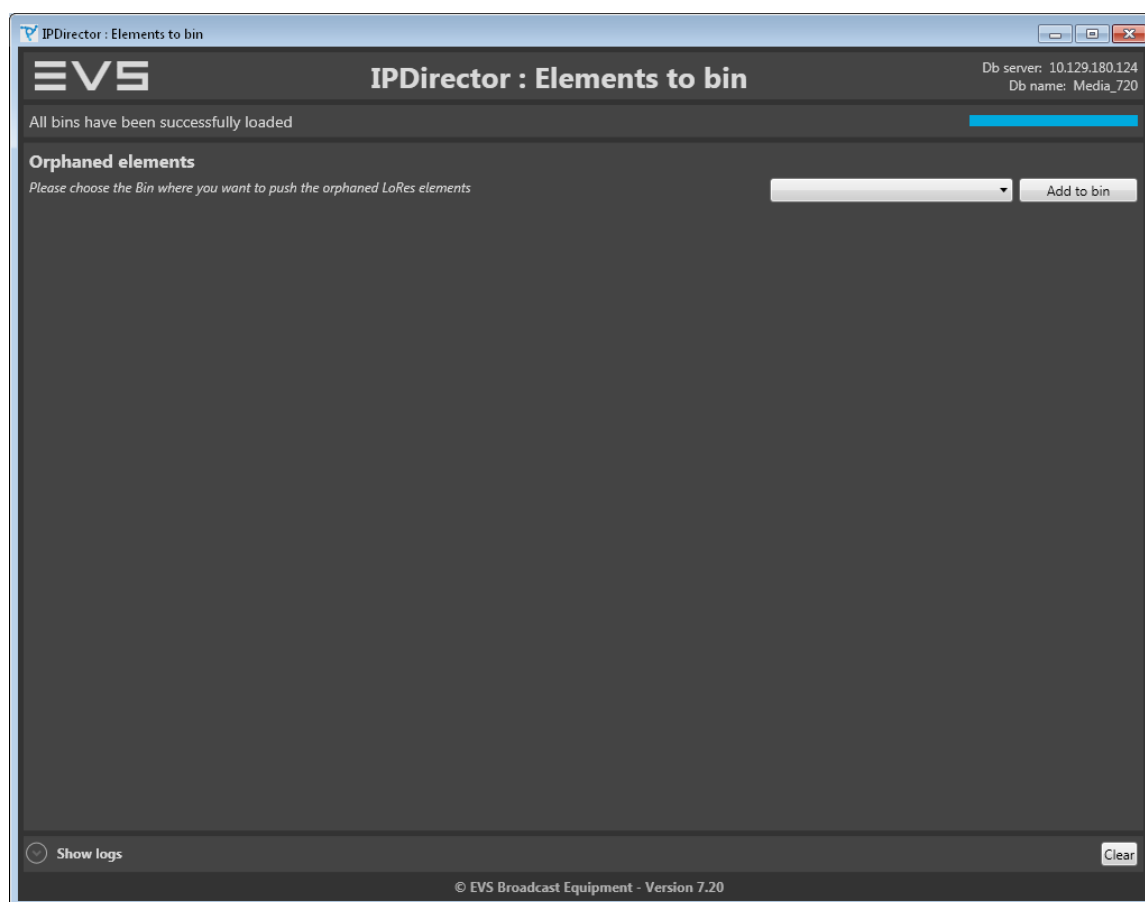
## NESTED TREE PLUGIN



This plugin check if Nested Trees are corrupted in DB.

When corrupted it can be rebuild properly by clicking on the *Rebuild* button. In order to rebuild the nested trees it is highly recommended to stop all services and clients.

## ELEMENTS TO BIN

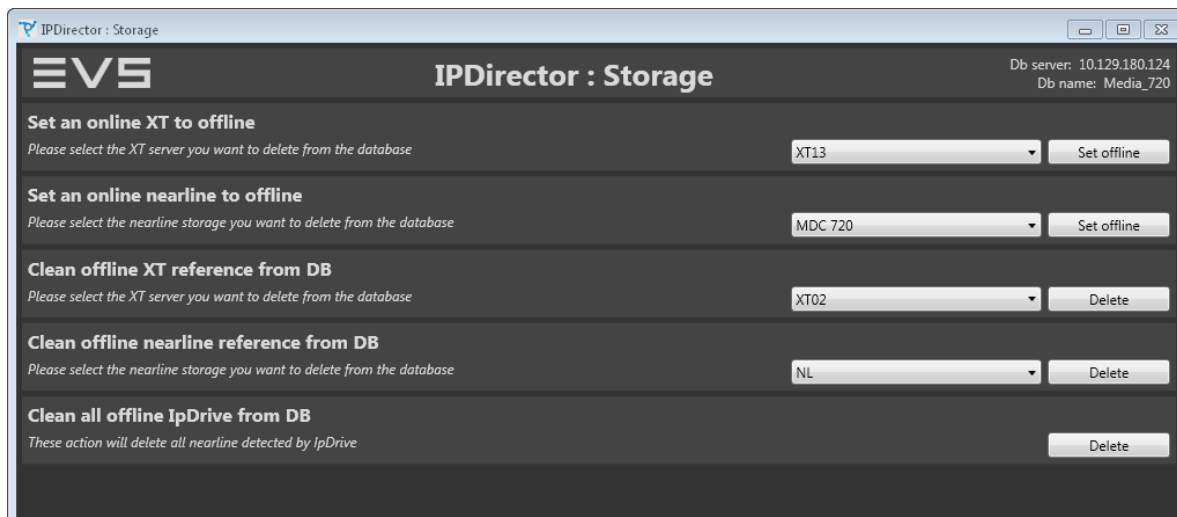


This plugin puts any LoRes clip not associated to a HiRes clip anymore into a specified bin.

### ADD TO BIN

- > The operator selects an existing bin where the clips must be added to
- > The plugin adds the orphaned LoRes clips to the bin

## IPDIRECTOR : STORAGE



This plugin has been designed to clean a database coming from an IPDirector setup and still showing servers and nearline not present in the setup where this DB is used.

Typical scenario : take a database backup on a running workgroup and restore in another setup.

### SET AN ONLINE XT TO OFFLINE

- > Set an XT, its recorders, its players and its clips to the Offline status. They will not be seen online anymore in the IP Director if no SynchroDB manages this XT.

### SET AN ONLINE NEARLINE TO OFFLINE

- > Set a nearline directory and its clips to offline status. They will not be seen online anymore if no synchroDB manages this nearline.

### CLEAN OFFLINE XT REFERENCE FROM DB

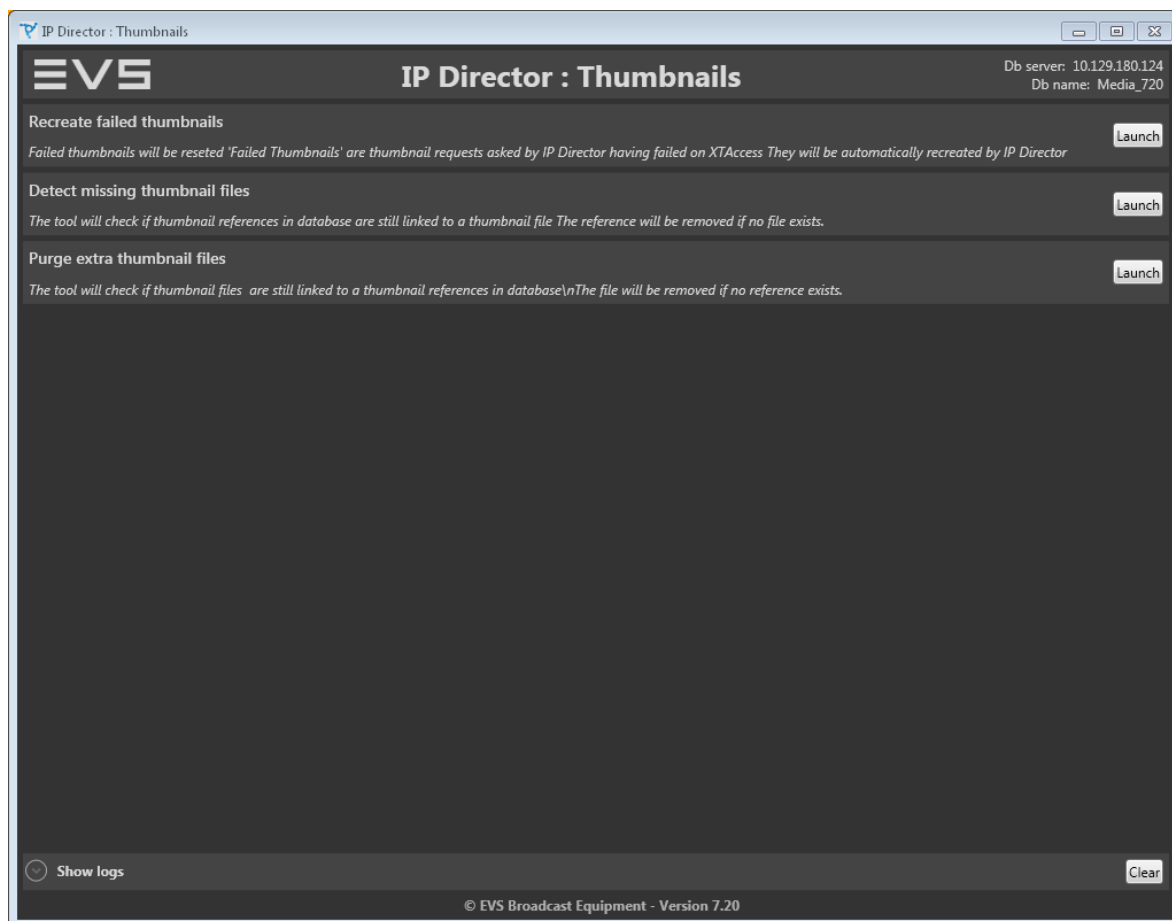
- > Deletes an XT, its recorders, its players and any reference to this XT (including the clips, log associations,...) from the database.

### CLEAN OFFLINE NEARLINE REFERENCE FROM DB

- > Deletes a Nearline directory and all the files and clips from the database. This nearline will not be seen in the IP director anymore even in the offline view.

**This plugin removes data from the database, use it with care and only under the advice of EVS**

## IPDIRECTOR : THUMBNAILS



This plugin allows to manage thumbnails

### RECREATE FAILED THUMBNAILS

Check the last thumbnail creation request. If thumbnail path not present will reschedule it. For assets, logs and playlist elements

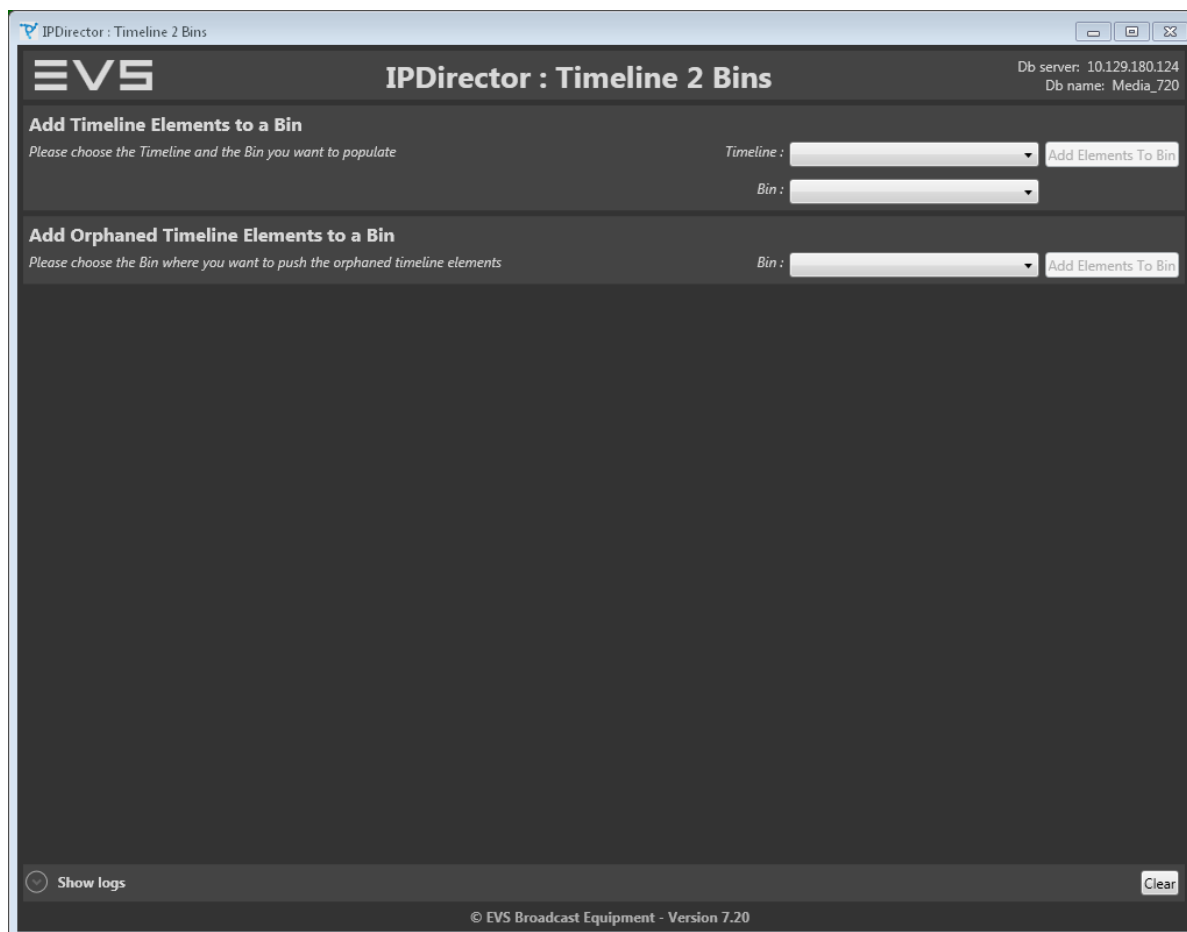
### DETECT MISSING THUMBNAIL FILES

Check if thumbnail files exist at defined path. If thumbnail path not present will reschedule it. For assets, logs and playlist elements

### PURGE EXTRA THUMBNAIL FILES

Check if thumbnails are linked to assets, logs or playlist elements. If not associated, remove the file

## IPDIRECTOR : TIMELINE 2 BINS



This plugin adds the clips created or used by a timeline into a specified bin

### ADD TIMELINE ELEMENT TO A BIN

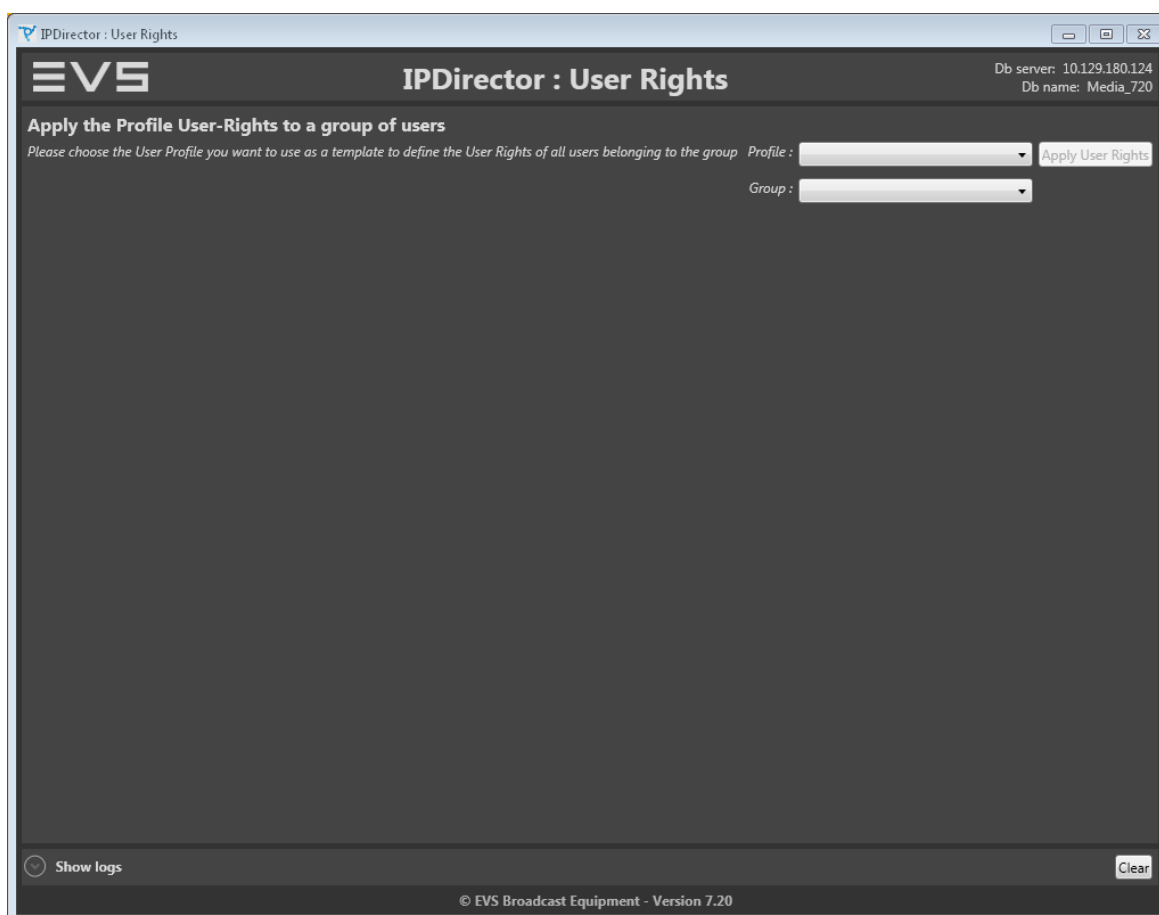
- > The operator chooses a timeline and a bin
- > The plugin adds the clips used by the timeline into the bin

### ADD ORPHANED TIMELINE ELEMENTS TO A BIN

- > The operator chooses a bin
- > The plugin adds to this bin the clips created by a timeline but not used in a timeline anymore.



## IPDIRECTOR : USERRIGHTS

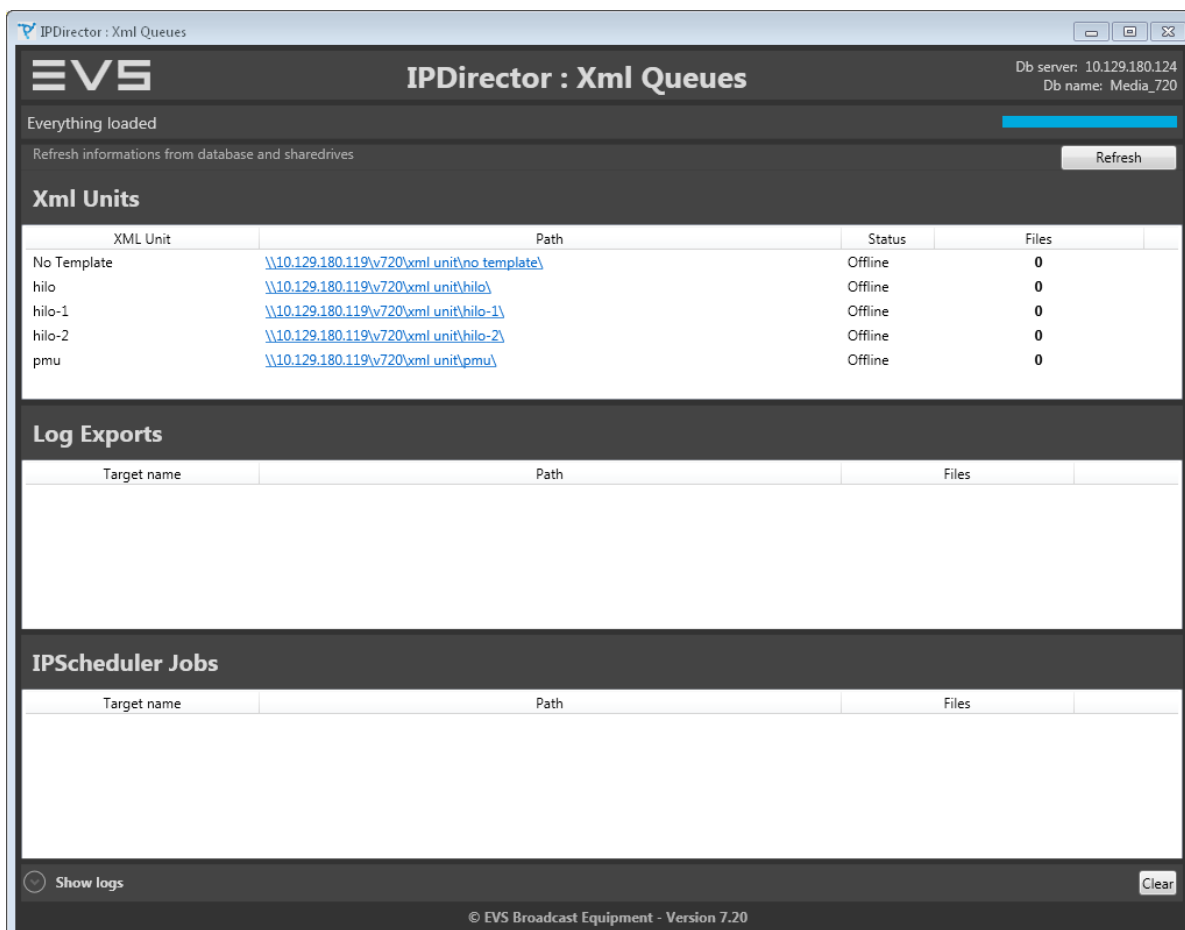


This plugin applies a user Right profile to a group of users

### APPLY THE PROFILE USER-RIGHTS TO A GROUP OF USERS

- > The operator chooses a user profile and a user group
- > The plugin applies the user rights from the user profile to all the users in the group

## IPDIRECTOR : XML QUEUES



IPDirector : Xml Queues

Db server: 10.129.180.124  
Db name: Media\_720

Everything loaded

Refresh informations from database and sharedrives

Refresh

### Xml Units

XML Unit	Path	Status	Files
No Template	\\10.129.180.119\v720\xml unit\no template\	Offline	0
hilo	\\10.129.180.119\v720\xml unit\hilo\	Offline	0
hilo-1	\\10.129.180.119\v720\xml unit\hilo-1\	Offline	0
hilo-2	\\10.129.180.119\v720\xml unit\hilo-2\	Offline	0
pmu	\\10.129.180.119\v720\xml unit\pmu\	Offline	0

### Log Exports

Target name	Path	Files
-------------	------	-------

### IPScheduler Jobs

Target name	Path	Files
-------------	------	-------

Show logs

Clear

© EVS Broadcast Equipment - Version 7.20

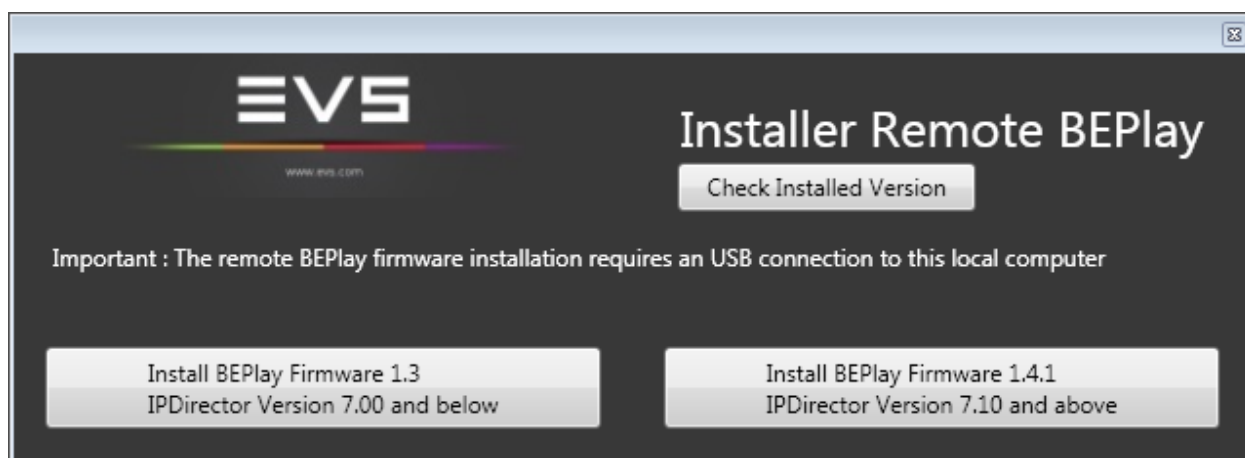
This plugin monitors the XML folders used by an IPDirector workgroup. It monitors the XMLUnits folders, the Log export folders and the IP Scheduler job folders.

For each folder the plugin shows if the folder is online and how much files are currently in the folder.

The values are automatically refreshed by the plugin.

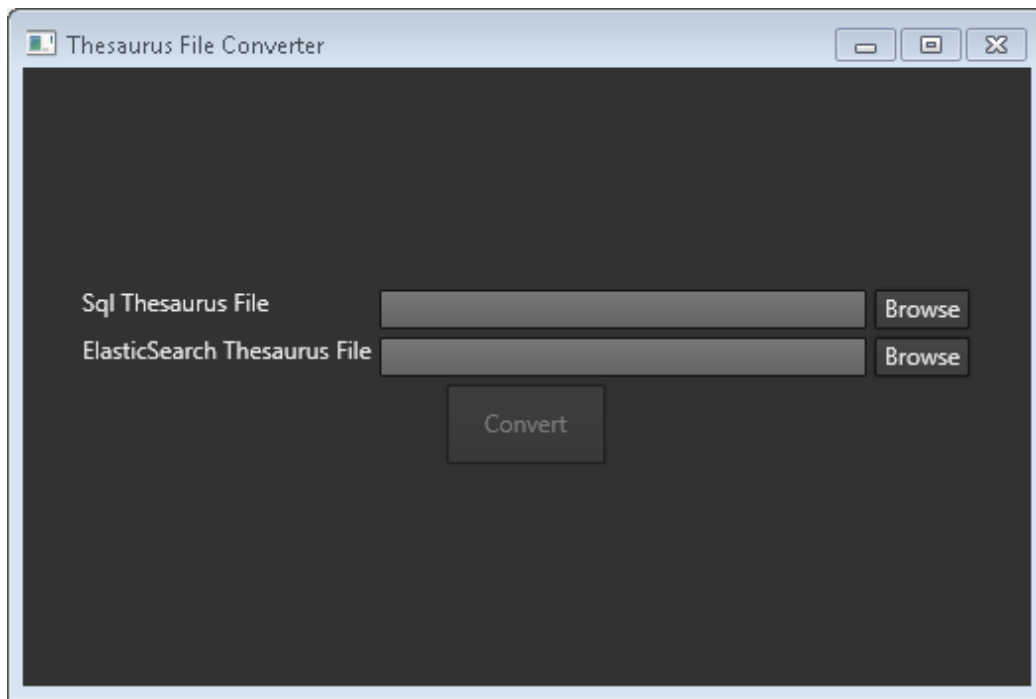
Color coding is used to highlight folders with a big amount of files.

## INSTALLER REMOTE BEPLAY



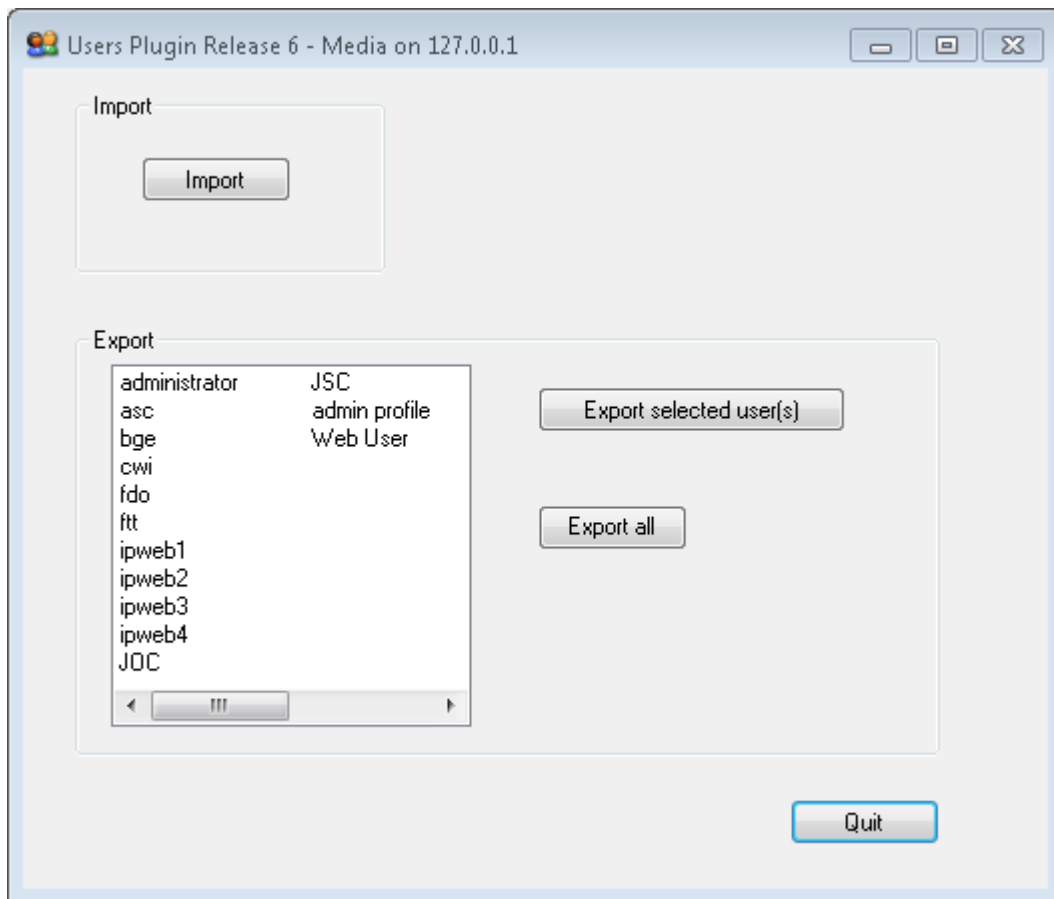
This plugin allows to easily install a BEPlay remote controller and check the installed version.

## THESAURUS FILE CONVERTER



The Theasaurus file converter allos to convert sql thesaurus file to elasticSearch thesaurus file in order to keep same behavious between DB explorer and 3<sup>rd</sup> parties app using the IPD indexing service

## USER PLUGIN



The user plugin allows to import and export users.

### IMPORT

- > chooses a user profile xml file to be imported
- > The plugin will then create the user in IPD User Manager

### EXPORT

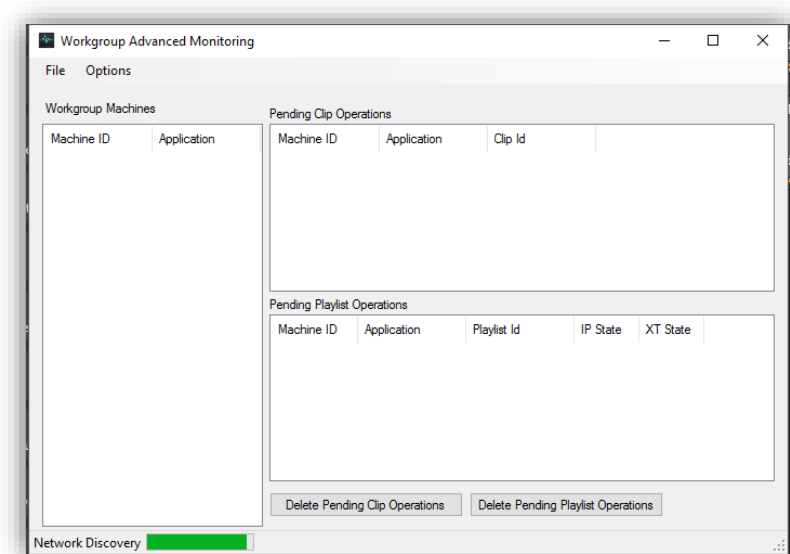
- > Select the users to be exported or export all users
- > Specify a destination folder
- > One xml file will be created per user in the specified destination folder

## WORKGROUP ADVANCED MONITORING

This plugin allows to List and Remove the Pending Operation on Clip and Playlist.

All synchroDB and IPD machines listed.

- > Check the Operation pending on Service memory
- > Check the Operation pending on IPDirector memory



This tool is an important improvement for the operations ! No synchroDB restart required anymore on Operation Pending.

BUT Important to continue to report the Pending Operation if still occurs.