



IP DIRECTOR APPLICATION NOTE

Time Sync

date/version

Corporate

Headquarters
+32 4 361 7000

North & Latin America

Headquarters
+1 947 575 7811

Asia & Pacific

Headquarters
+852 2914 2501

Other regional offices

Available at
www.evs.com/contact

TABLE OF CONTENTS

TABLE OF CONTENTS	2
INTRODUCTION	3
TIME SYNCHRONISATION	4
EVS-TIMESYNC-CONFIGURATION.HTA	5
WELCOME SCREEN	5
SERVER CONFIGURATION.....	5
CLIENT CONFIGURATION.....	6



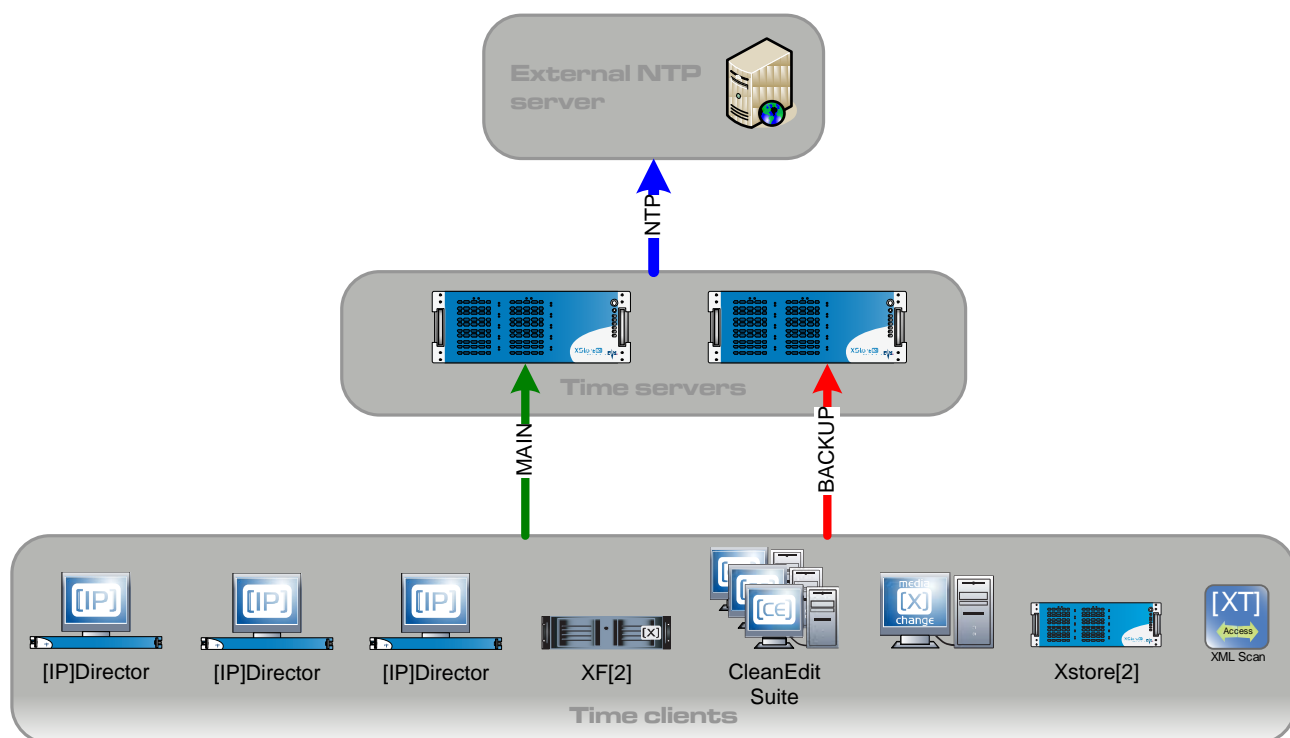
INTRODUCTION

This document describes how the Windows Time service can be used and configured to synchronize the time in a IP Director workgroup.

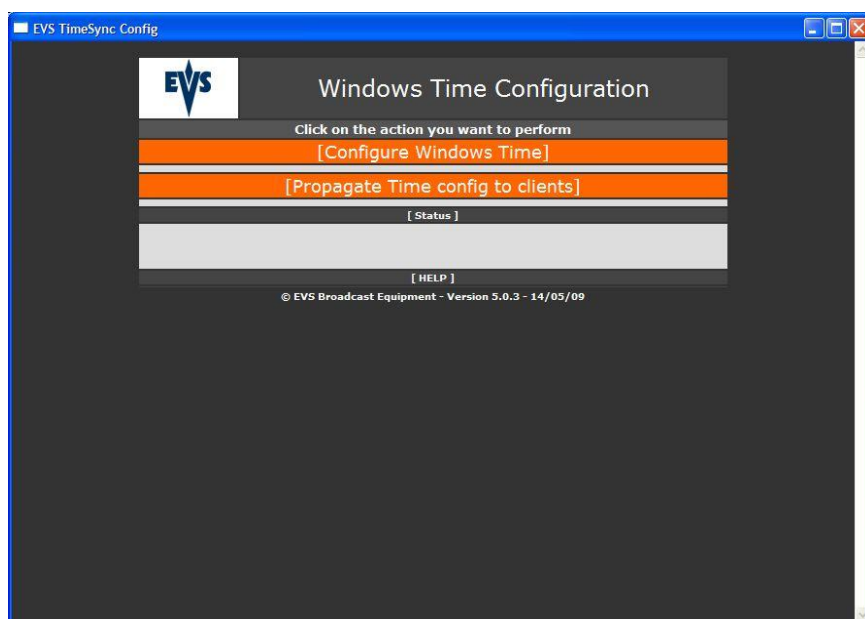
TIME SYNCHRONISATION

Since windows 2000, windows operating systems uses an internal service to synchronize the time in a domain environment. This service (Windows Time aka w32time) can be configured to play either a client or a server role even in a workgroup environment. This service can use an external source (NTP server) as the time reference as well.

How to configure an authoritative time server in Windows XP (<http://support.microsoft.com/kb/314054>)



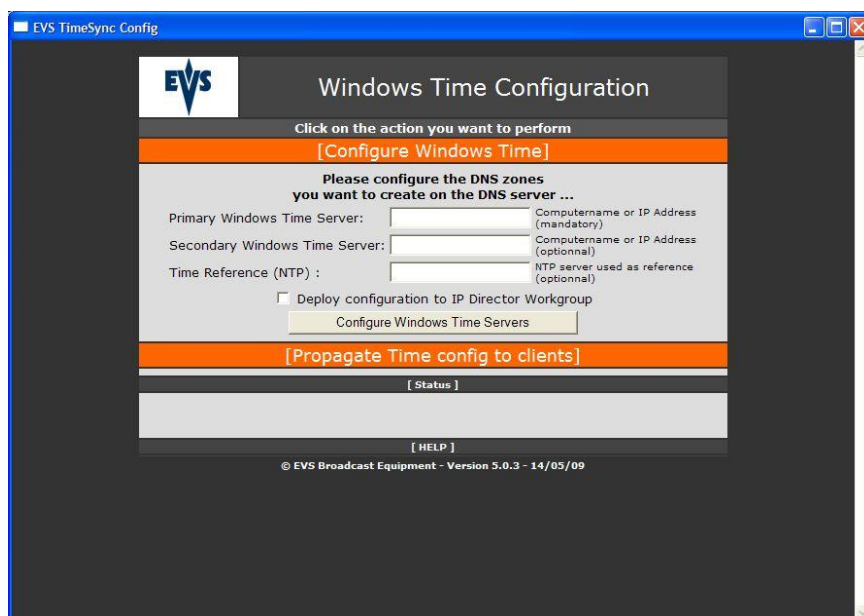
EVS-TIMESYNC-CONFIGURATION.HTA WELCOME SCREEN



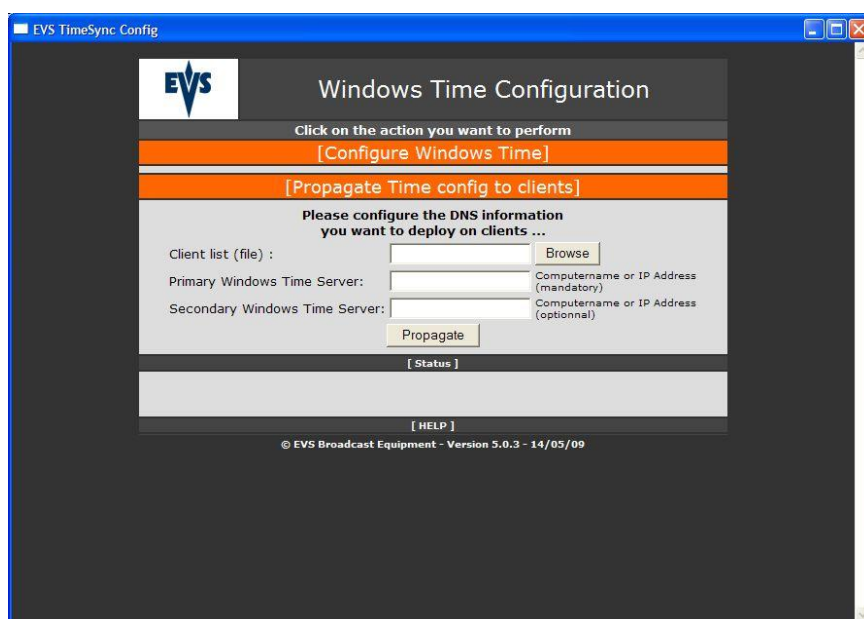
- > **[Configure Windows Time]** : Configures the "Windows Time" service on a Windows station as Time Server .
- > **[Propagate Time config to clients]** : Configures windows clients to use the" windows Time" servers as time references.

SERVER CONFIGURATION

- > **Primary Windows Time Server** : computername or IP address of the computer that will become the main time server on the network. The HTA will apply registry values on that computer and restart the Windows Time service.
- > **Secondary Windows Time Server** : computername or IP address of the computer that will become the backup time server on the network. The HTA will apply registry values on that computer and restart the Windows Time service.
- > **Time Reference (NTP)** : NTP server used by the 2 Time Servers to have a time reference
- > **Deploy configuration to IP Director Workgroup** : Configure the IP Directors detected by the local remote installer to used the 2 Time Servers as time reference.



CLIENT CONFIGURATION



- > **Client list (file)** : text file with the IP addresses of the windows client to configure.
- > **Primary Windows Time Server** : computername or IP address of the computer used as Main Time Server
- > **Secondary Windows Time Server** : computername or IP address of the computer used as Backup Time Server