



IP DIRECTOR APPLICATION NOTE

Windows Integration

date/version

Corporate

Headquarters
+32 4 361 7000

North & Latin America

Headquarters
+1 947 575 7811

Asia & Pacific

Headquarters
+852 2914 2501

Other regional offices

Available at
www.evs.com/contact

TABLE OF CONTENTS

TABLE OF CONTENTS	2
INTRODUCTION	3
IP-DIRECTOR ACCOUNTS	4
IP-DIRECTOR AND XML UNIT	5
IP-DIRECTOR AND NEARLINE	6
TARGETS AND NEARLINES ON WINDOWS 7	7

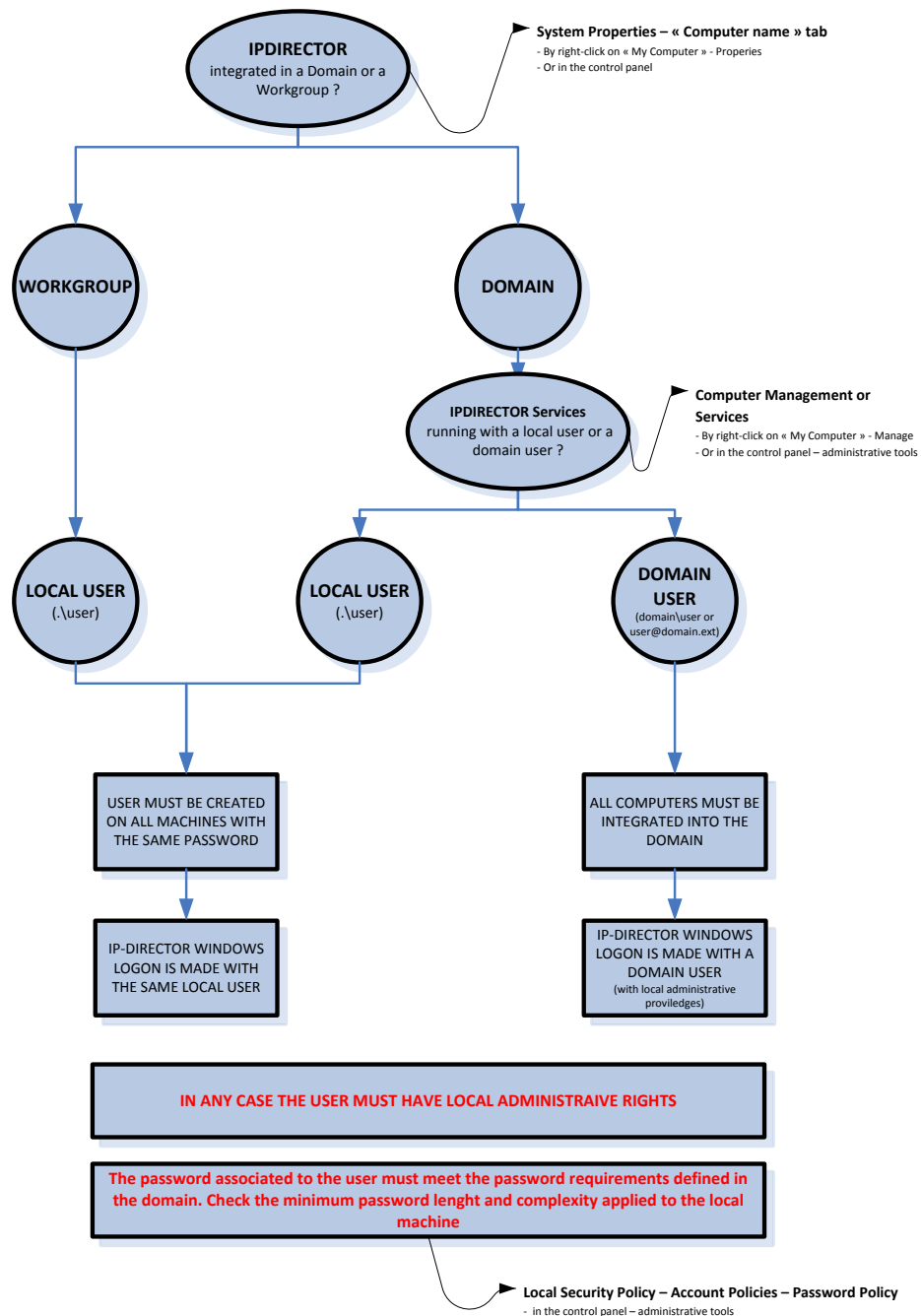
INTRODUCTION

The aim of this document is to help the support team to diagnose Windows integration problems in an IP-Director network.

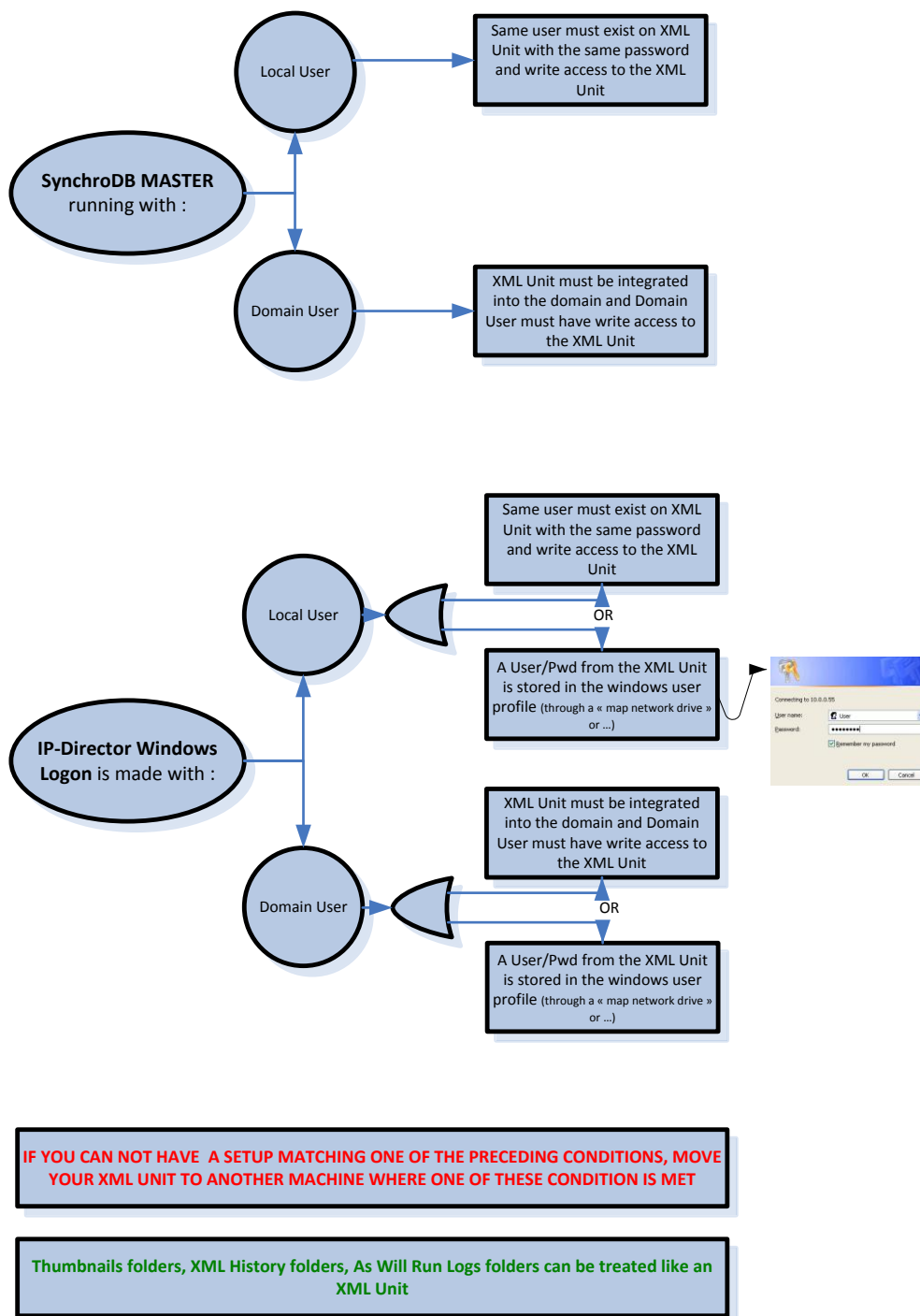
3 cases are shown here :

- > The usage of Windows Users in an IP-Director network
- > The link between IP-Director and the XML Units
- > The link between IP-Director and a nearline storage.

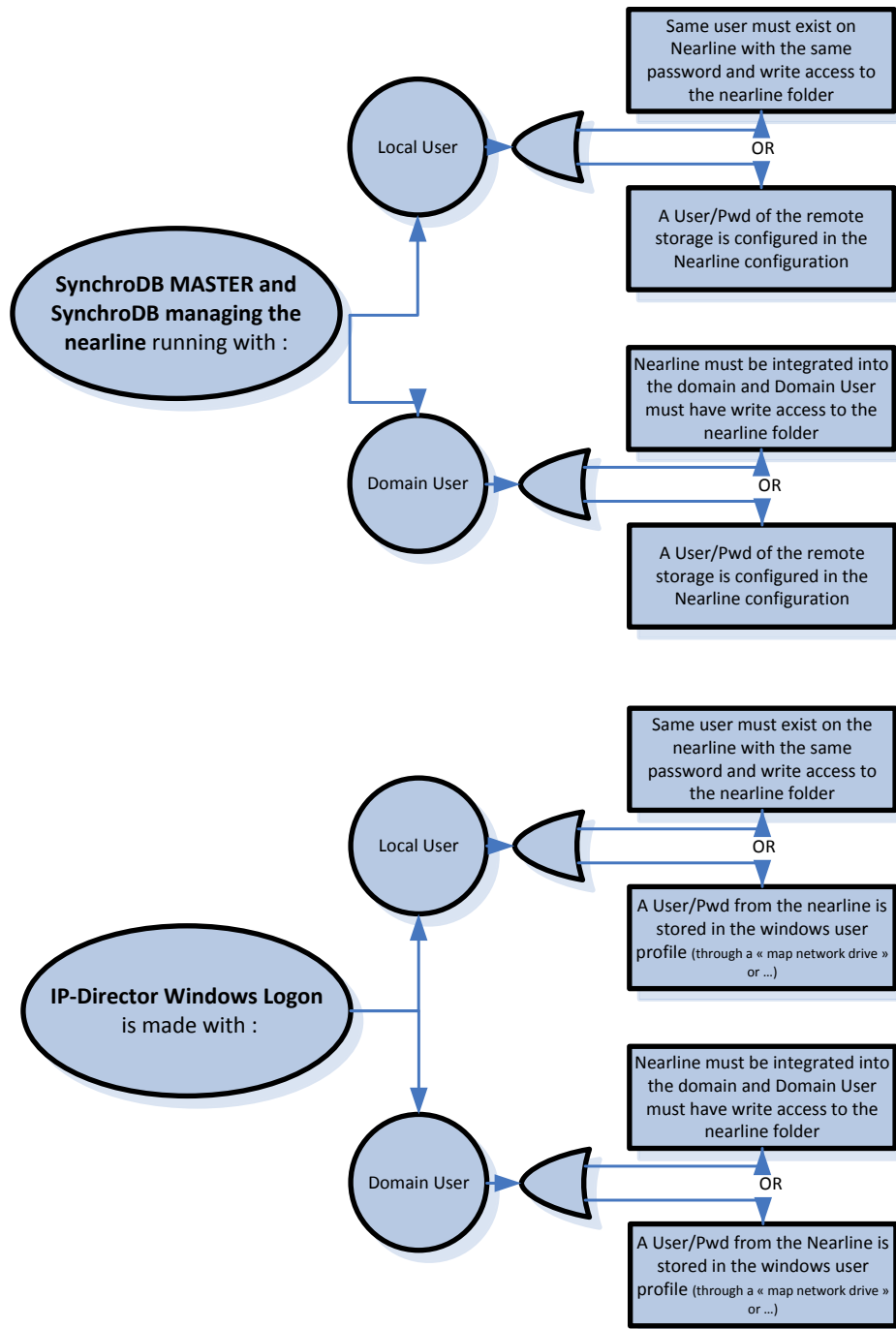
IP-DIRECTOR ACCOUNTS



IP-DIRECTOR AND XML UNIT



IP-DIRECTOR AND NEARLINE



TARGETS AND NEARLINES ON WINDOWS 7

Windows 7 is not optimized by default to act as a file server. It means that writing big files on a Windows 7 share could cause big instability of the Windows Server Service.

The consequence for IP Director are :

- > Clip backup failing after the second or third "send to"
- > Nearline disappearing after a few "sent to nearline"

This can be fixed by configuring the Windows Server Service registry to use more memory.

The 2 registry keys can be applied to the Windows 7 to avoid this issue :

```
[HKEY_LOCAL_MACHINE\SYSTEM\CurrentControlSet\Control\Session Manager\Memory Management]  
"LargeSystemCache"=dword:00000001
```

```
[HKEY_LOCAL_MACHINE\SYSTEM\CurrentControlSet\services\LanmanServer\Parameters]  
"Size"=dword:00000003
```