



XT[2]

HARDWARE UPGRADE UPGRADE FROM 4 TO 6 CHANNELS.

FEBRUARY 2007

Version of this note: 1.0.0

HARDWARE INVOLVED

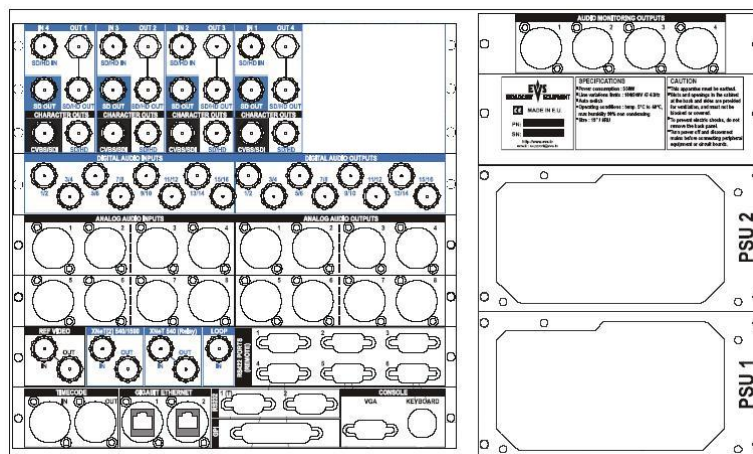
Chassis : 6U XT[2]

DESCRIPTION

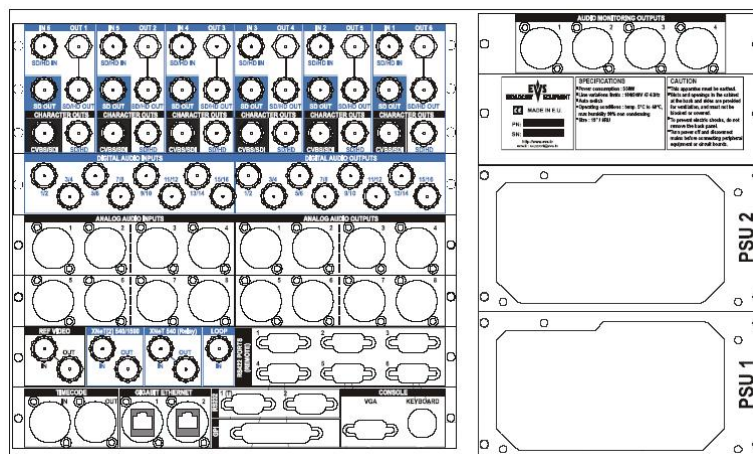
This document helps you to upgrade an XT[2] from 4 to 6 channels: The exchange of the video connections backpanel and the addition of a second COHX board.

PROCEDURE

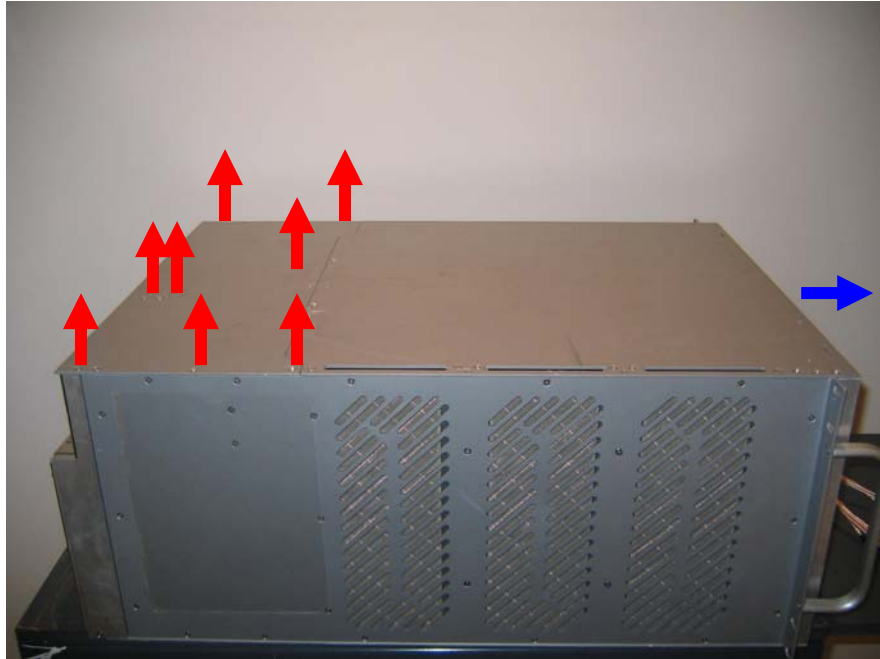
4ch Video Back Panel



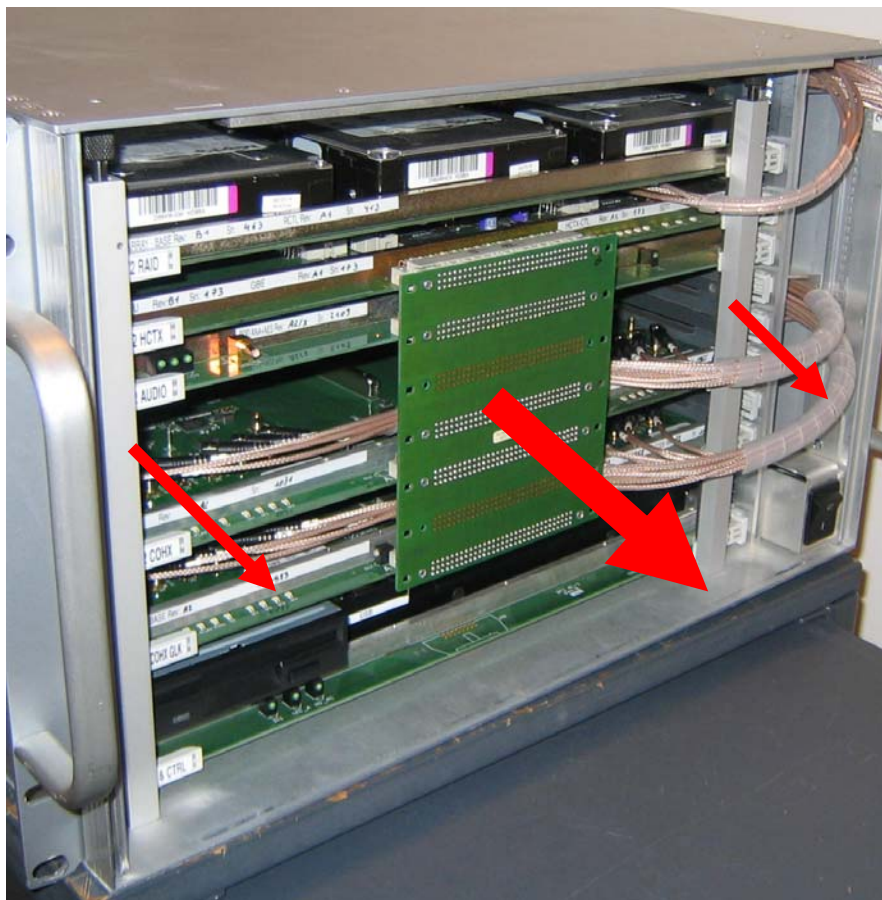
6ch Video Back Panel



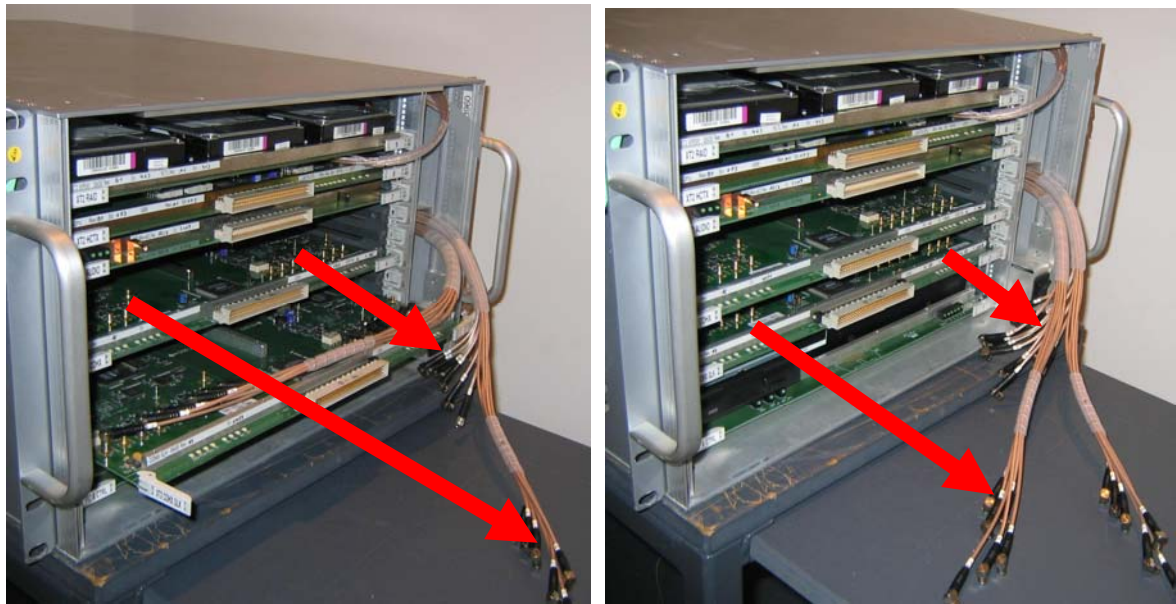
1. Open the blue front door. Unscrew and open the top rear cover.



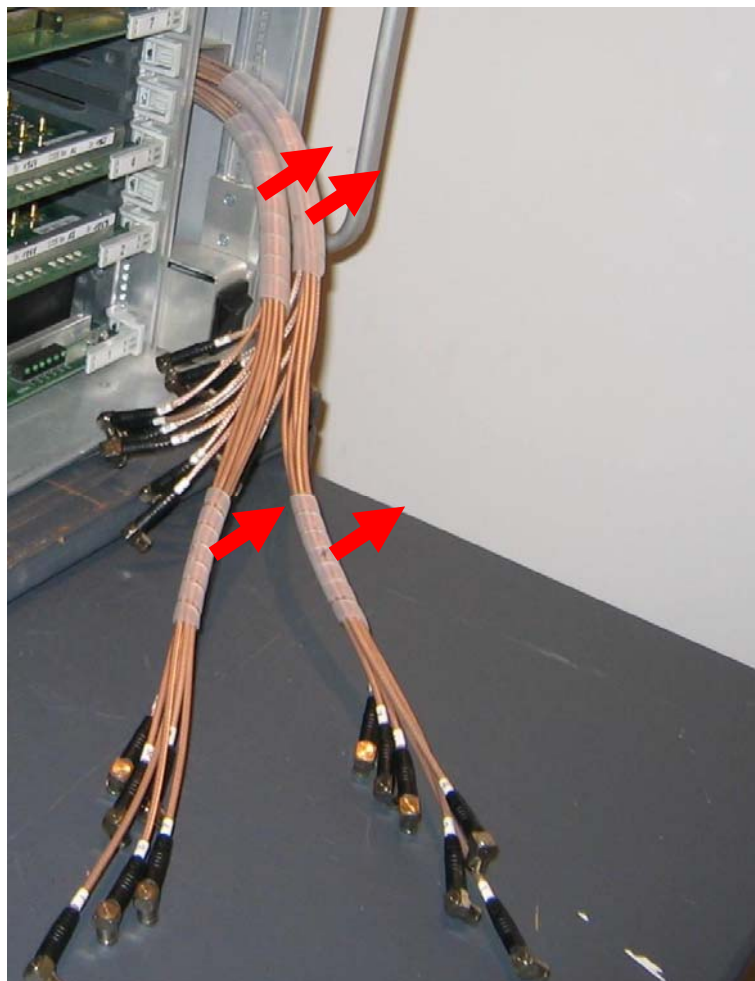
2. Remove the vertical uprights and the front video backplane.



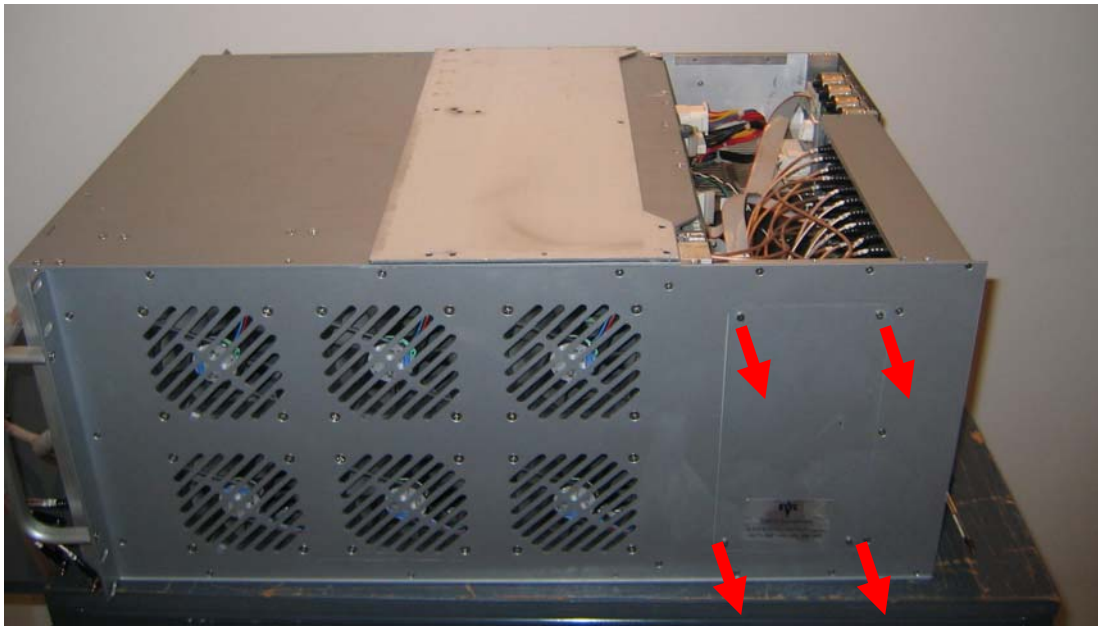
3. Unplug carefully the SMB connectors on COHX GLK (n°2) and COHX (n°4) boards.



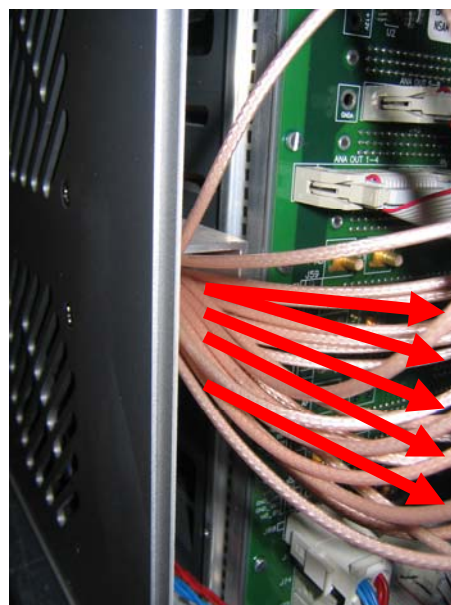
4. Remove the white "spirotubes" off the TEFLON cables.



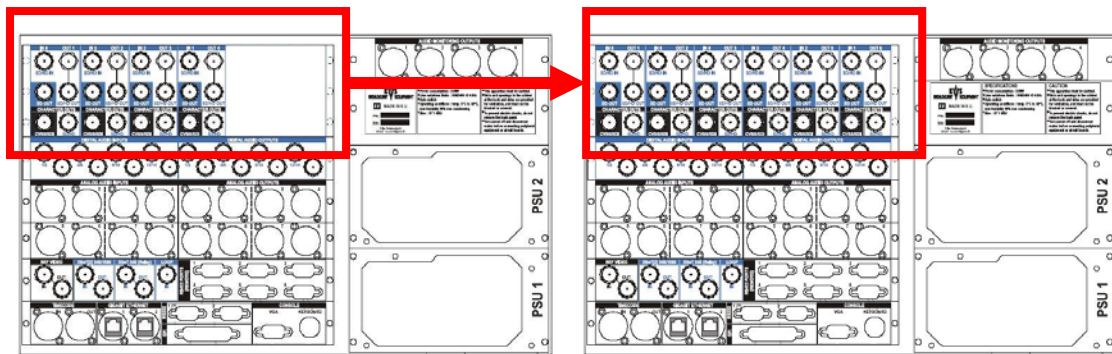
5. Open the lateral door by removing the screws.



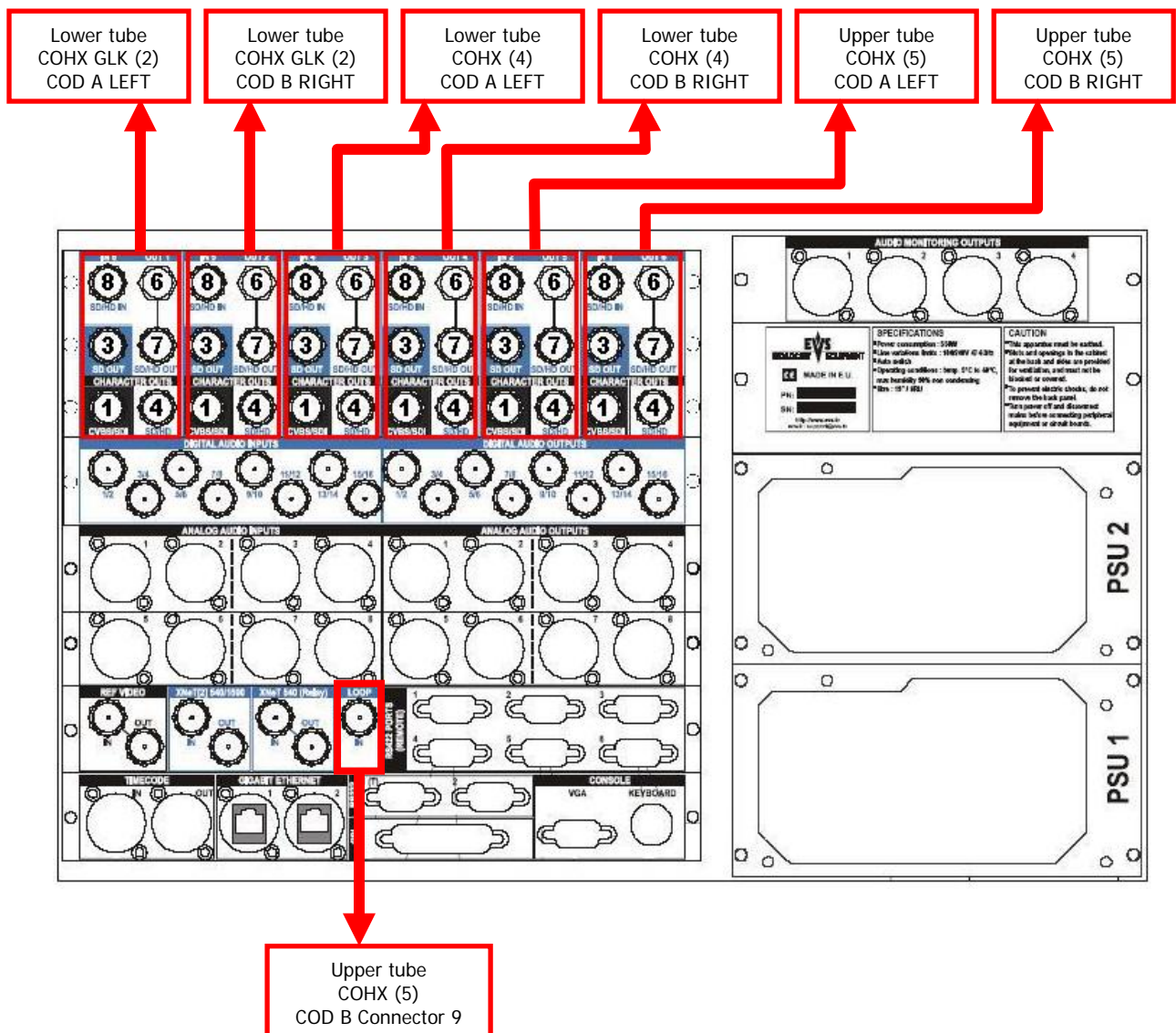
6. Slide all the TEFLON cables off the lateral internal lower tube. Be careful and remove cables one by one.



7. Exchange the 4 CH BNC back panel with the 6 CH BNC back panel.

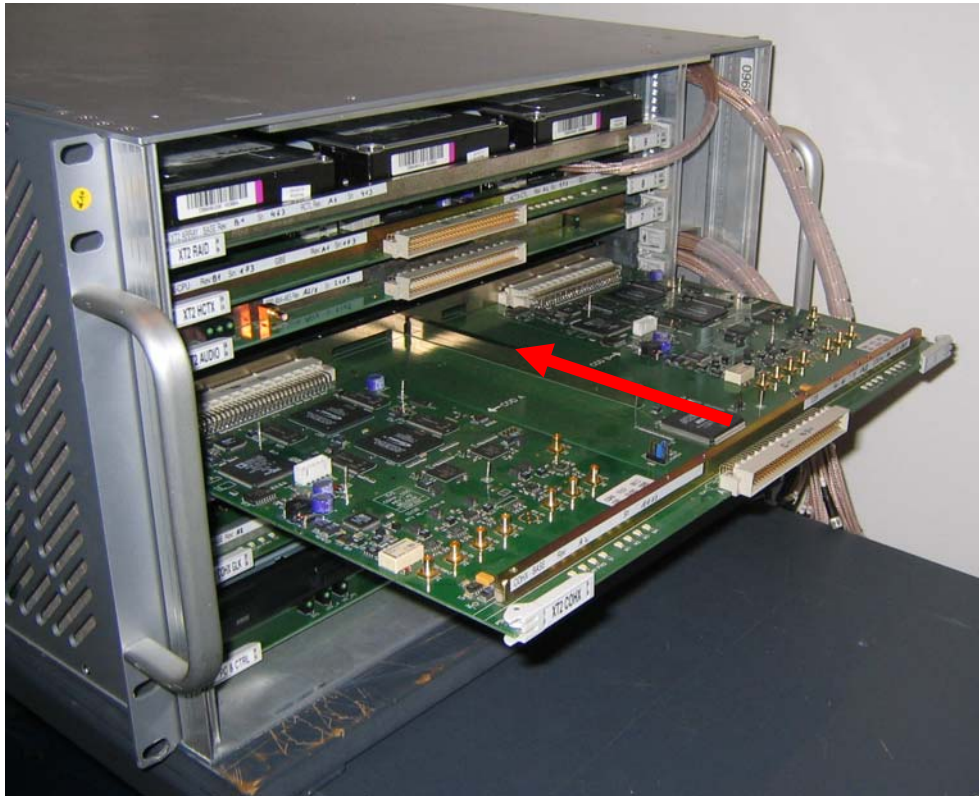


8. Slide the new TEFLON video cables through the lower and the upper lateral tubes according to this picture:

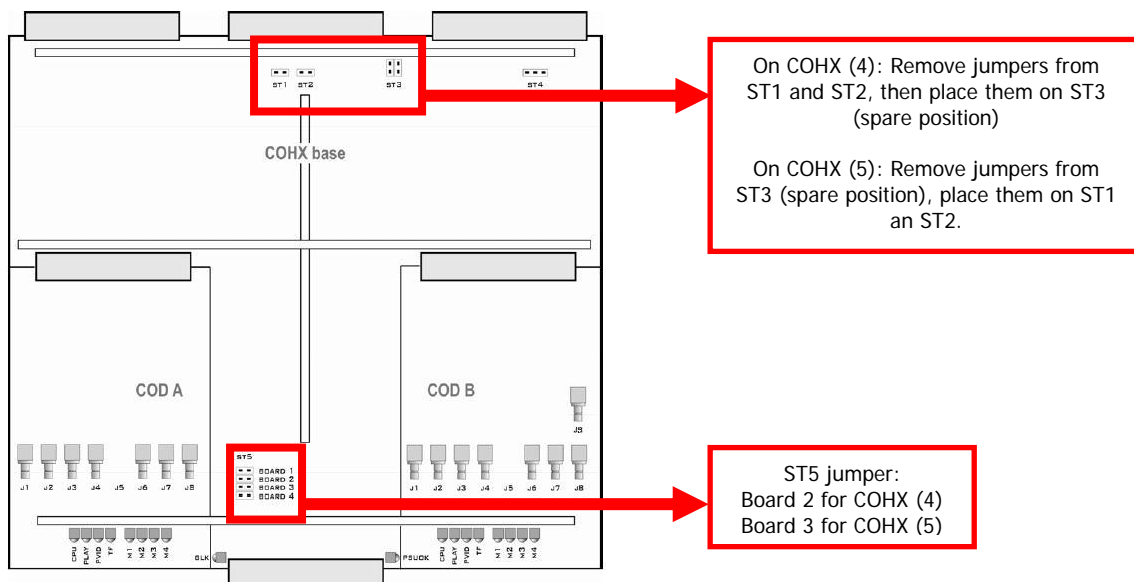


Important: Unplug the LOOP IN connector from COHX (4) COD B connector 9, slide the TEFLON cable off the lower tube and slide it into the upper tube. Finally connect it on the COHX (5) COB connector 9.

9. Insert the new COHX (5) board in position 5.



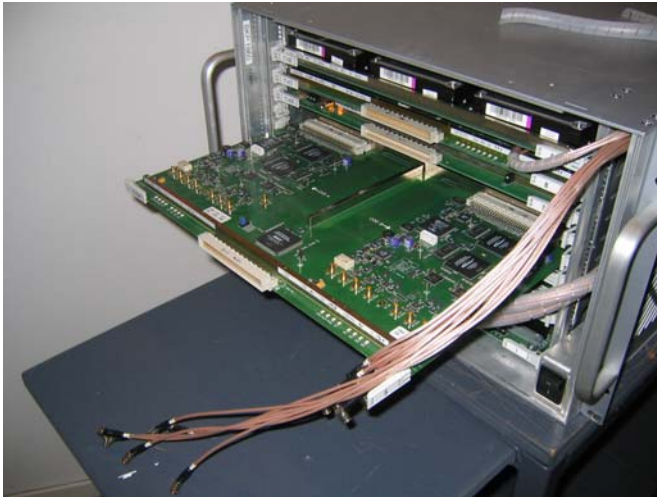
Important: Check the jumpers on COHX board 4 & 5 !!!!!



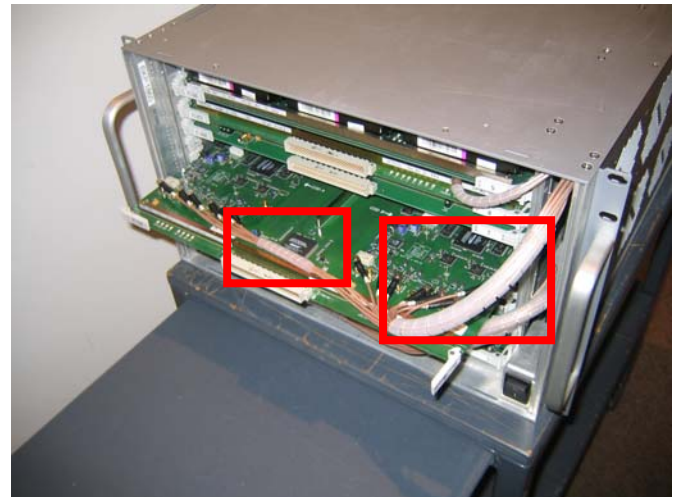
Jumpers ST1 and ST2 must be closed on the upper COHX board as a termination.

When you upgrade from 4 to 6 channels, the COHX (4) termination is switched off and COHX (5) termination switched on.

10. Plug the SMB video connectors on each COHX board.

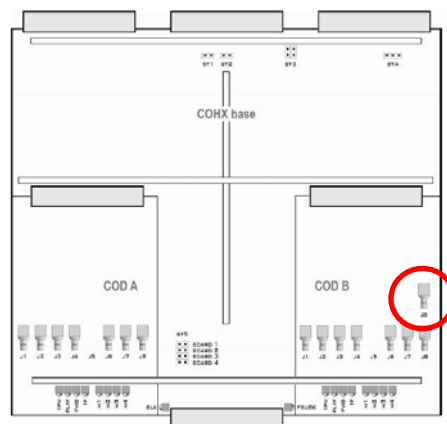


Plug first the COD A connectors regarding the numbers labelled on TEFLON cables. There is only 6 cables per channel (1,3,4,6,7&8). Please refer to the *point 8* picture to do it.



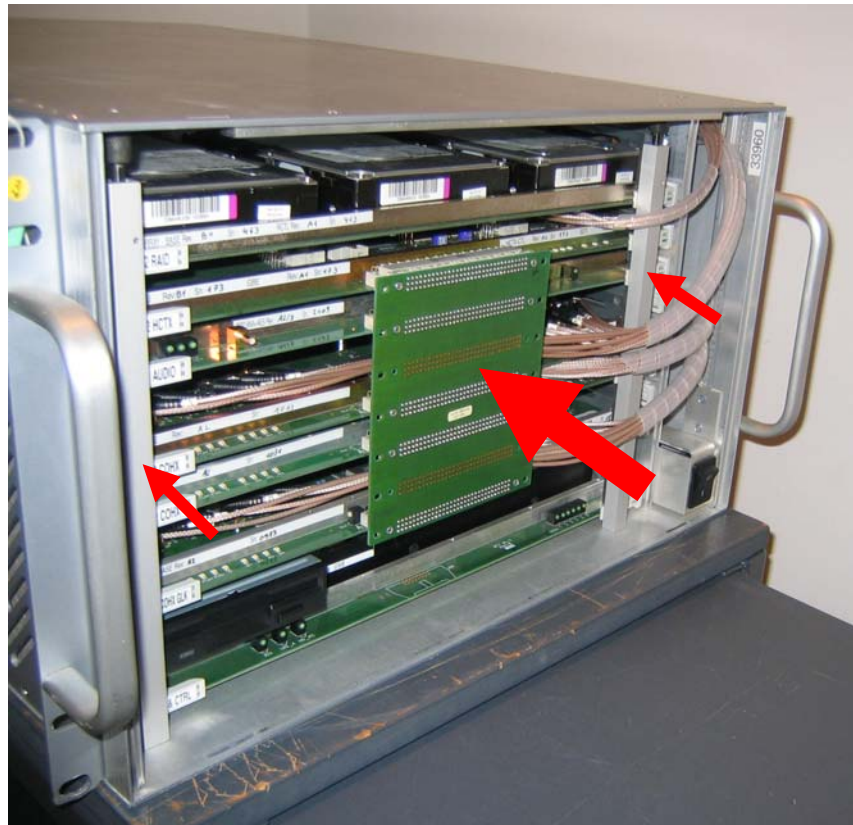
Plug the COD B connectors with the same method as described before and join cables together with white “spirotubes” (or tie-raps).

Repeat *point 10* on the 3 boards: COHX GLK(2), COHX (4) and COHX (5).



Warning: Don't forget the extra connector 9 on COHX (5) for the LOOP IN option.

11. Push smoothly the boards inside the server. Place the vertical uprights and the front video backplane (removed on *point 2*).



And finally, screw the lateral door (opened on *point 5*) and the top rear plate (opened on *point 1*). Close the front blue door.

12. Restart your server. In the EVS menu, press F9 to access the maintenance menu. Select the configuration option. Adjust the number of video channels from 4 to 6, using the space bar. Then, press ESC to quit.

