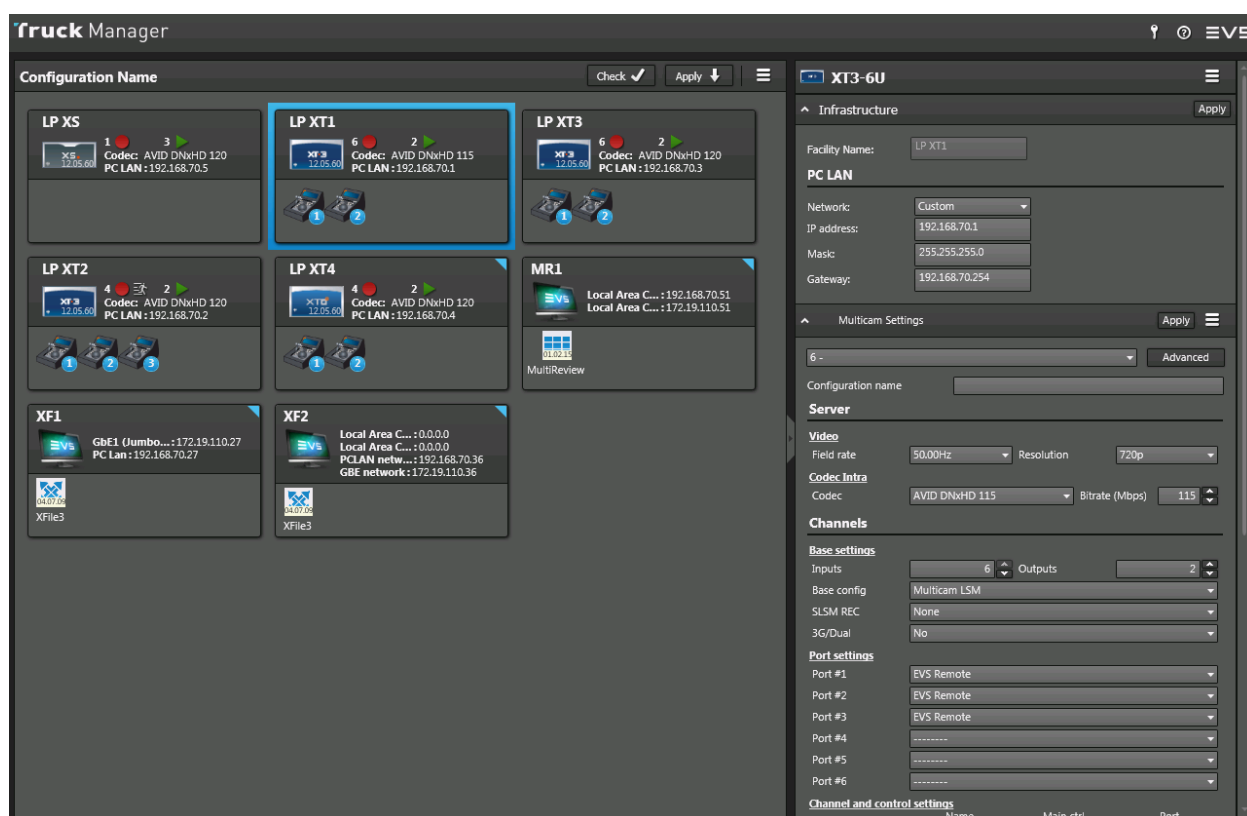




Truck Manager 1.2 Release Note

February 2017 / 1.2.0



Corporate

Headquarters
+32 4 361 7000

North & Latin America

Headquarters
+1 973 575 7811

Asia & Pacific

Headquarters
+852 2914 2501

Other regional offices

Available at
www.evs.com/contact

LIST OF DOCUMENTS	3
COMPATIBLE PRODUCTS	3
SOFTWARE INSTALLATION.....	4
OPERATING SYSTEM COMPLIANCE	4
FIREWALL.....	4
HARDWARE: WHERE CAN I INSTALL TRUCK MANAGER ?	5
LICENSES.....	6
TRUCK MANAGER DESCRIPTION.....	7
TRUCK MANAGER FEATURES	7
NEW FEATURES IN TRUCK MANAGER 1.1	8
TRUCK MANAGER KNOWN ISSUE AND LIMITATIONS.....	9
TRUCK MANAGER BUG FIXES	9

LIST OF DOCUMENTS

Release notes

- **TruckManager_ReleaseNote_v1.2.0.pdf** : Release note of Truck Manager 1.0

Install Manual

- **TruckManager_installman_1.2.pdf**: Install manual for truck manager

User Manual

- **TruckManager_userman_1.2.pdf**: user manual for truck manager

COMPATIBLE PRODUCTS

Truck manager is “plugin based”. The above compatible product list represents the situation at the truck manager release date. Other products will be compatible as soon as an associated plugin is available.

- Multicam 12.05.62 and higher
- Multicam 14.00.49 and higher
- Multicam 15.00.39 and higher
- Multicam 15.1.29 and higher
- LSM Connect 2.2.9 and higher
- Xfile3 4.8.10 and higher
- MultiReview 01.03.58
- XFly Streamer 1.08.06
- NanoAir 2.04.04

SOFTWARE INSTALLATION

See user manual for details of the installation procedure.

OPERATING SYSTEM COMPLIANCE

Truck manager is compatible with:

- **Windows 7 64 bits (default OS)**
- Windows 7 32 bits (not tested)
- Windows Server 2008 R2 SP1 64 bits
- **Windows 10 64 bits (NEW)**

Because Truck manager relies on .NET framework 4.6.1, the following operating systems are NOT supported:

- Windows XP
- Windows 2003 Server 32 bits
- Windows 2003 Server 64 bits

Truck manager is not tested with Windows 8 and Windows 10

FIREWALL

Truck Manager uses the following ports:

- 21 : EVS server file exchanges
- 1474: EVS product (Windows hosted) file exchanges
- 2221: LSM Connect file exchanges
- 80 : EVS server software management
- 9192 : EVS product (Windows/Android hosted) software management
- 12000-12001 : EVS server/product discovery and Network management

Note: it is not possible to modify those port numbers.

Broadcast routing

Your router must support packet broadcast on these ports:

- 12000-12001 : EVS server/product discovery

HARDWARE: WHERE CAN I INSTALL TRUCK MANAGER ?

The minimum system requirement for truck manager:

- Workstation or server
- CPU Intel i5
- 2GB RAM
- Ethernet board
- VGA 1024x768
- At least 2GB free on the hard disk

LICENSES

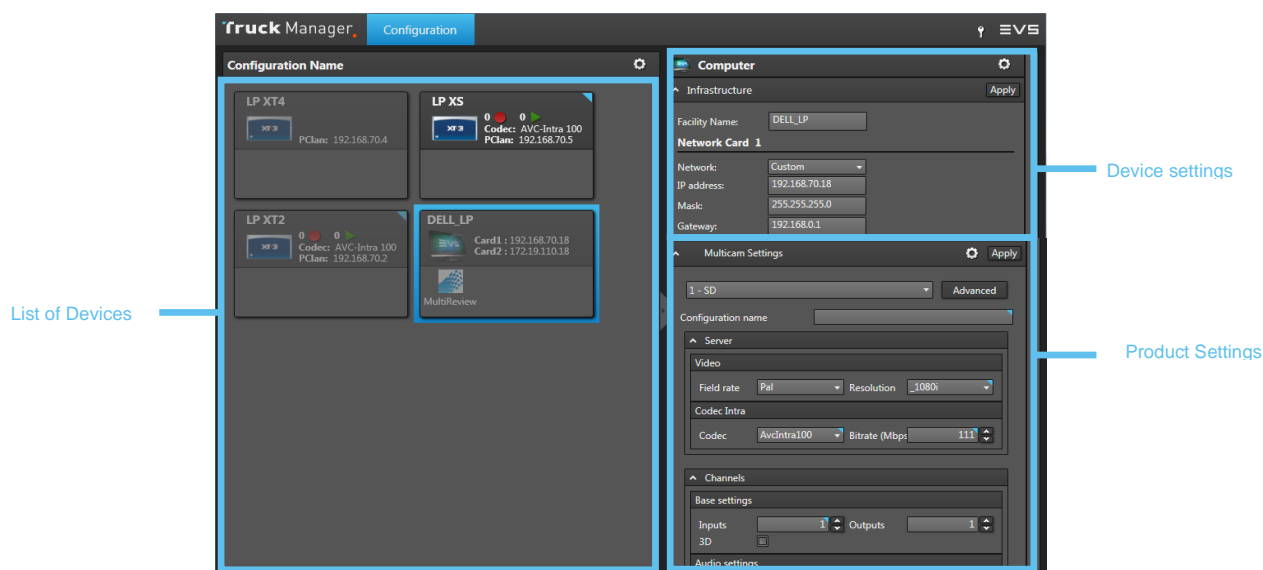
Truck manager licensing is based on 2 licenses:

- Base license (mandatory): Disconnected mode - Support only Offline Configuration
- Full License : Connected mode- Support Configuration and deployment on Connected Devices

TRUCK MANAGER DESCRIPTION

Truck Manager helps optimizing operational costs by providing a simple, fast and centralized way to configure the EVS solution in mobile units for live production.

Truck Manager is “Plugin based” and supports product as soon as the product has integrated the requested module and created the proper plugin.



TRUCK MANAGER FEATURES

- Detects EVS products of the truck
- Rearranges the IP addresses from the Truck Manager interface (whether IP address is correct or not)
- Changes settings per product or globally
- Saves and recalls a partial or full EVS configuration
- Prepares configuration offline (without being in the event place)
- Checks predefined inter equipment rules to reduce the configuration errors

NEW FEATURES IN TRUCK MANAGER 1.2

- Windows 10 support
- Minix support

NEW FEATURES IN TRUCK MANAGER 1.1

- Interface improvements
- Detect Windows workstations (if discovery service is installed)
- CSV Import/Export
- Keyword upload to EVS servers

TRUCK MANAGER KNOWN ISSUE AND LIMITATIONS

- [Configuration Area] Plugin - layout issue when Window's Magnifier tool is at 125% (TRUCKMGR-58)
- [Configuration Area] Plugin - with an LSMConnect (ver 2.3.5) Plugin displays the wrong version number (2.2.8) (TRUCKMGR-59)
- NanoAir 2.4.5 plugin displays version 2.4.4 (NANOAIR-40)

For the Product Plugin limitation, refer to the associated product release note.

TRUCK MANAGER BUG FIXES

Bugs fixed in patch 01.00.03

Key	Summary
TRUCKMGR-106	[Device Area] Global Operations: Endless Multicam menu
TRUCKMGR-105	Azerty keyboard - Main settings - impossible to change codec bitrate
TRUCKMGR-103	[Regression - Startup] Wizard Main Settings - Default Bitrate value not taken (or Bitrate fields not 'refreshed')
TRUCKMGR-101	Truck manager licenses not correctly detected
TRUCKMGR-100	[InterProductRules] TruckManager fails to set GBE priorities when a MultiReview is present in the setup
TRUCKMGR-74	Device area - Not all devices visible in "list view" with more than 20-30 devices