

INSTALLATION MANUAL

Version 4.3 - June 2021





Disclaimer

This manual and the information contained herein are the sole property of EVS Broadcast Equipment SA and/or its affiliates (EVS) and are provided “as is” without any expressed or implied warranties, including, but not limited to, the implied warranties of merchantability and fitness for a particular purpose. In particular, EVS makes no warranty regarding the use or the consequences of use of this manual and the information contained herein. Furthermore, EVS may not be held liable for any direct or indirect, incidental, punitive or consequential loss, damage, cost or expense of any kind whatsoever and howsoever resulting from the normal or abnormal use of this manual and the information contained herein, even if advised of the possibility of such loss, damage, cost or expense.

While every effort has been made to ensure that the information contained in this manual is accurate, up-to-date and reliable, EVS cannot be held liable for inaccuracies or errors that may appear in this publication. The information in this manual is furnished for informational purpose and use only and subject to change without notice.

This manual cancels and replaces any previous versions thereof.

Copyright

Copyright © 2012-2021 EVS Broadcast Equipment SA. All rights reserved.

This manual may not be reproduced, transcribed, stored (in a database or a retrieval system), translated into any language, computer language, transmitted in any form or by any means – electronically, mechanically, printed, photocopied, optically, manually or otherwise – in whole or in part without the prior written consent of EVS.

Trademarks

All product and brand names are registered trademarks and trademarks of EVS or of their respective owners.

Improvement Requests

Your comments will help us improve the quality of the user documentation. Please send improvement requests, or report any error or inaccuracy on this user manual by e-mail to doc@evs.com.

Regional Contacts

You will find the full list of addresses and phone numbers on the following webpage: <http://www.evs.com/contact>.

User Manuals on EVS Website

The latest version of the user manual, if any, and other user manuals on EVS products can be found at the EVS download center, on the following webpage:

<https://www.evs.com/en/download-area>.



Table of Contents

TABLE OF CONTENTS	III
1. WHAT'S NEW	V
2. VIA XSQUARE OVERVIEW	1
3. REQUIREMENTS	3
4. SOFTWARE INSTALLATION	1
4.1. Full Installation vs. Light Installation	1
4.2. Installation Types	2
4.3. Installing VIA Xsquare	3
4.4. Installing FTA for C-Next	8
5. VIA LICENSING MANAGEMENT	14

1. What's New

In the VIA Xsquare installation manual, the icon **NEW !** has been added on the left margin to highlight information on new and updated features in version 4.3.

Changes linked to new features in VIA Xsquare version 4.3 do not require an update of the installation manual.

The full list of modified and new features in version 4.3 is available in the release notes.



WARNING

It is essential to acquire the new VIA licenses in order to run the XTAccess 4.0 and higher servers with VIA Xsquare 4.0 and higher versions. Please contact EVS Support to do this.



WARNING

It is highly recommended to perform a DB backup of your Xsquare 3.x software before upgrading to VIA Xsquare 4.0 and higher versions.



2. VIA Xsquare Overview

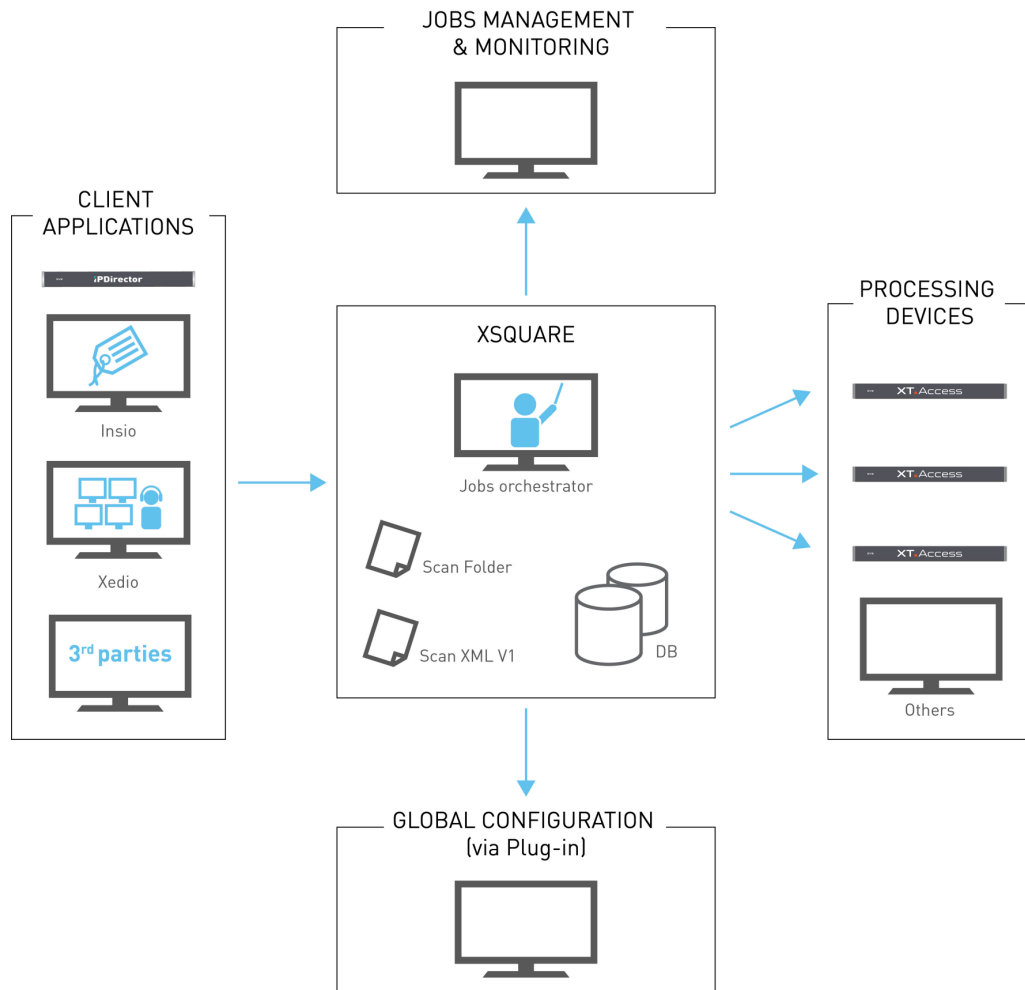
The VIA Xsquare solution is an orchestrator, which receives job requests and dispatches them (taking into account load balancing, JOB API, etc.) to the best VIA Xsquare agent, i.e. a VIA Xsquare agent available and able to manage the requested job (transcoding, rewrapping, etc).

VIA Xsquare agents are **XTAccess** applications.

All jobs for XTAccess will go through VIA Xsquare, which is the central point to control XTAccess. XTAccess is no longer directly visible to users therefore.

The main advantages of this architecture are the following:

- One global Orchestrator for all jobs
 - improvement of jobs load balancing, dispatching and management.
- One global configuration tool
 - simplification of the engine configuration as well as the target configuration.
- One global monitoring tool
 - simplification of overall job monitoring
- Additional modules (e.g. Scan Folder) can be added to VIA Xsquare
 - modularity.



Clients (IPD, 3rd party, Xedio, etc.) that want to create a job (transfer of media from A to B) use only a single interface (GUI, API, configuration): **VIA Xsquare.**

3. Requirements

Hardware Requirements

VIA Xsquare has to be installed on a server hardware that meets the following requirements:

- **CPU:** CPU Intel i7
- **RAM:** 8 GB (64 GB recommended)
- **VGA:** 1024x768
- **HDD:** at least 2 GB free space
- **Network:** GigE board

Software Requirements

VIA Xsquare 4.3 is compatible with one of the following operating systems:

- Windows 10 64 bits (recommended windows 10 version LTSB or CBB 1607)
- Windows Server 2016 64 bits

VIA Xsquare 4.3 requires the following software:

- .Net Framework version 4.6.1 or 4.7 (when using FTA for C-Next).

4. Software Installation

4.1. Full Installation vs. Light Installation

The following VIA Xsquare installers are provided:

- The VIA Xsquare full installer, to install the complete VIA Xsquare application suite and required EVS services, as well as other software and services required to be able to work with the VIA Xsquare suite (software requirements).

The following executable file is available:

- File compatible with Windows 10 with the following name pattern: `Xsquare_Suite_x.x.x.x_Setupwin10_full.exe`. SQL Server 2016 is used with Windows 10 and is included in this executable.

You should use the full installer for a new installation, an upgrade to a major release (e.g. from version 3.x to 4.x), or when any of the required external software needs to be updated to be compatible with the VIA Xsquare version.



WARNING

It is highly recommended to perform a DB backup of your Xsquare 3.x software before upgrading to VIA Xsquare 4.0. Automatic downgrade from VIA Xsquare 4.0 to Xsquare 3.x is not supported. You will be able to recover a 3.x setup only by uninstalling 4.0, then reinstalling 3.x and restoring the 3.x DB.

- The VIA Xsquare light installer, to upgrade the VIA Xsquare application suite. It includes the VIA Xsquare suite and other EVS software components, but no external software that may be required, which should be installed before upgrading.

The executable file has the following name pattern: `Xsquare_Suite_x.x.x.x_Setup_light.exe`.

You can use the light installer for a minor upgrade (e.g. from version 4.0 to 4.1) if all required external software is up-to-date on your workstation.

4.2. Installation Types

During the installation process, you will be able to choose from the following installation types:

- **StandAlone setup:** The installer will install VIA Xsquare, XTAccess and all the required software. The installer will also automatically associate XTAccess with VIA Xsquare. This Installation mode will not require further confirmations or information.
- **Orchestrator setup:** The installer will install VIA Xsquare and all the required software but not XTAccess. This Installation mode will not require further confirmations or information.
- **Agent setup:** The installer will install XTAccess and all the required software but not VIA Xsquare. This Installation mode will not require further confirmations or information.
- **Advanced setup:** The installer will show you all the software installed on your computer and you will be able to select manually the software to install.

This Installation mode will require further confirmations and information for each installer. This mode should be used by EVS experts only. In this mode, the following information is displayed:

- version number of installed components;
- version number of components available in the installation package;
- **Install** and **Remove** buttons for each component that make it possible to install or uninstall individual components.

4.3. Installing VIA Xsquare



NOTE

When you install the FTA for C-Next in the advanced mode, you will need to upgrade .Net framework to version 4.7.

To install the VIA Xsquare suite using the full installer, proceed as follows:

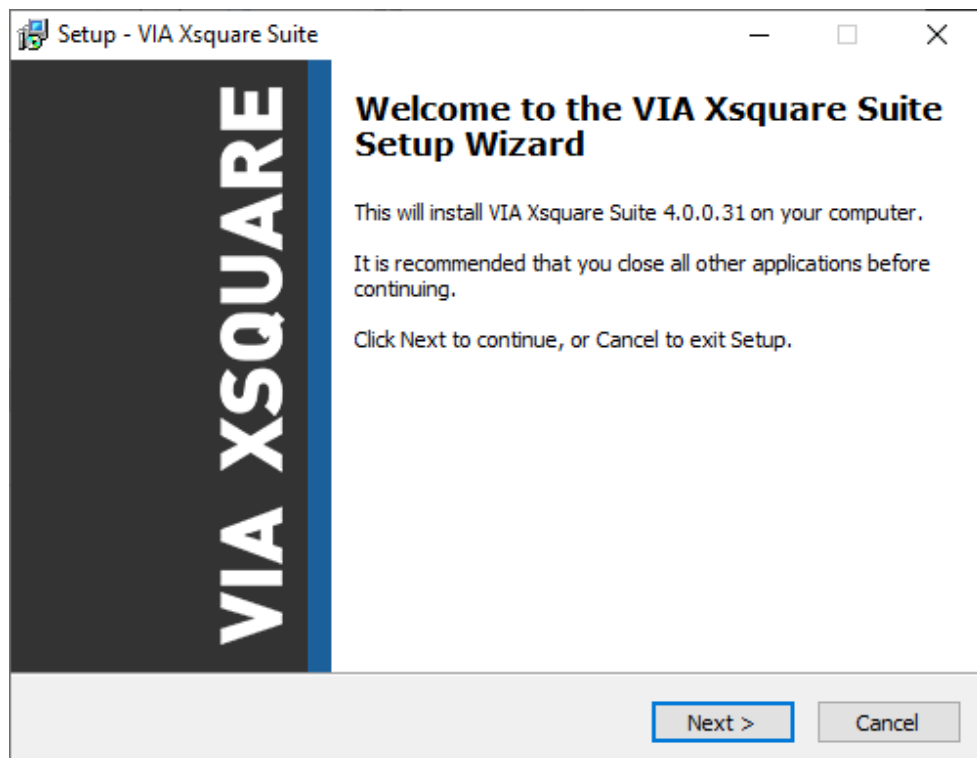
1. Copy the requested installer file in a temp directory (e.g. C:\Install Software\Xsquare\).

See section "Full Installation vs. Light Installation" on page 1 for more information on the various executable files.

2. Double-click the executable file to launch the VIA Xsquare Suite setup wizard, then follow the installation steps:

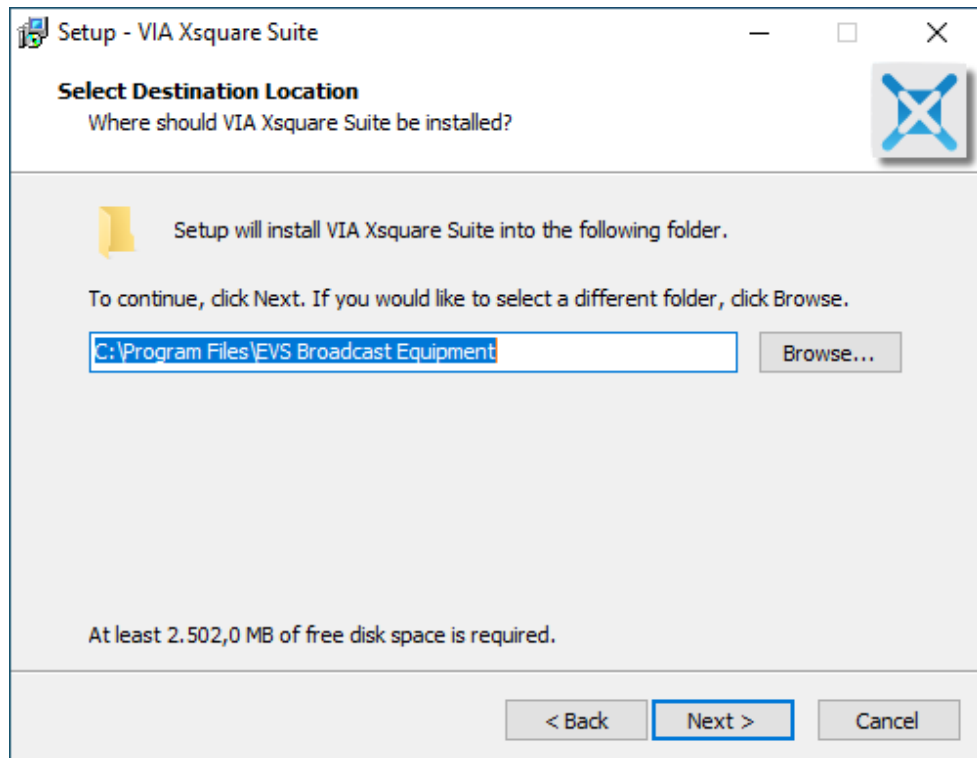
The Welcome window appears.

1. On the Welcome window, press **Next**:



The Select Destination Location window appears.

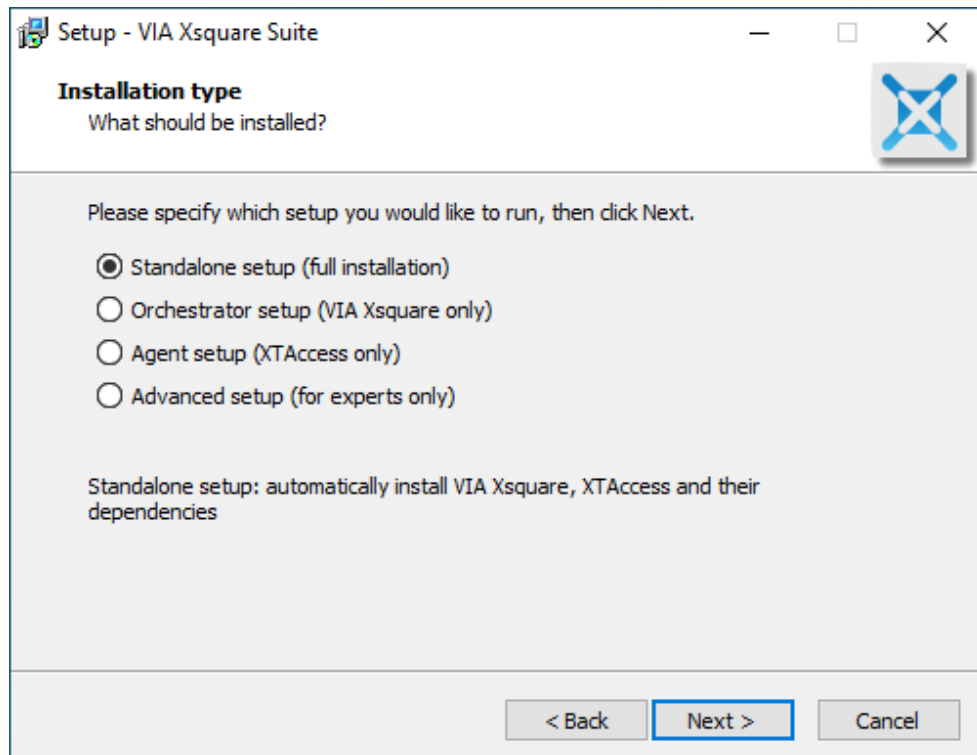
2. In the Select Destination Location window, select the destination directory to install the new software and press **Next**:



Z

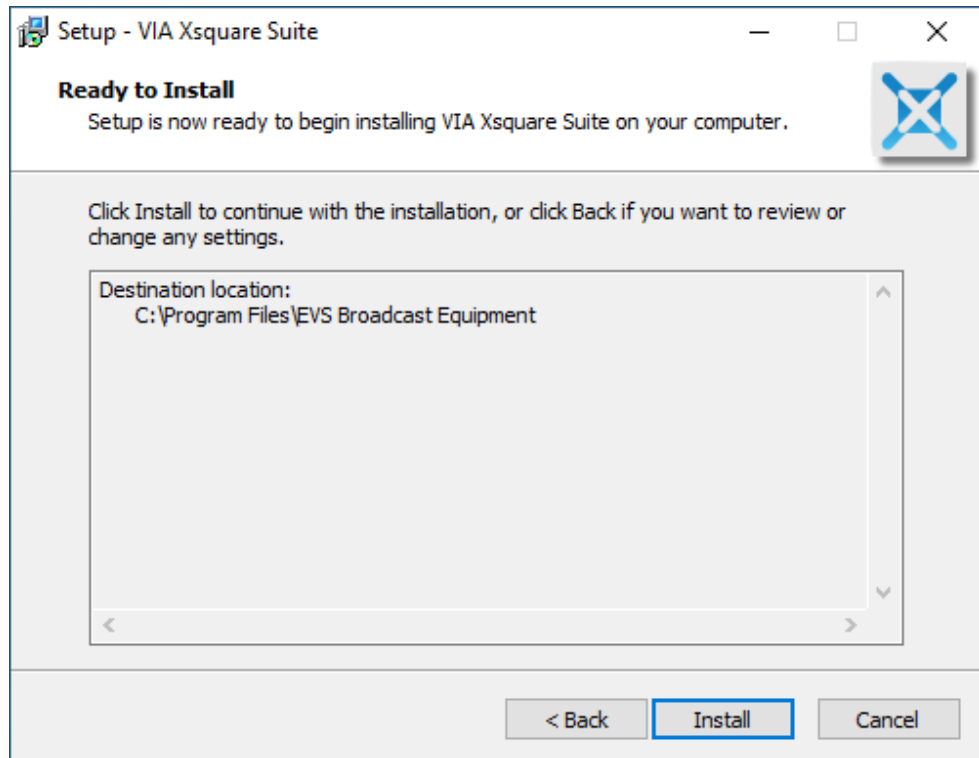
The Installation Type window appears.

3. In the Installation Type window, select an installation type (See section "Installation Types" on page 2) and click **Next**.



The Ready to Install window appears.

4. The Ready to Install window summarizes the selected location for VIA Xsquare, and the database name. Click **Install**.



The Installing window opens.

5. In the Installing window, two behaviors are possible:
 - If you have selected the **Standalone**, **Orchestrator** or **Agent** setup, the various installation components are called and installed automatically one after the other.

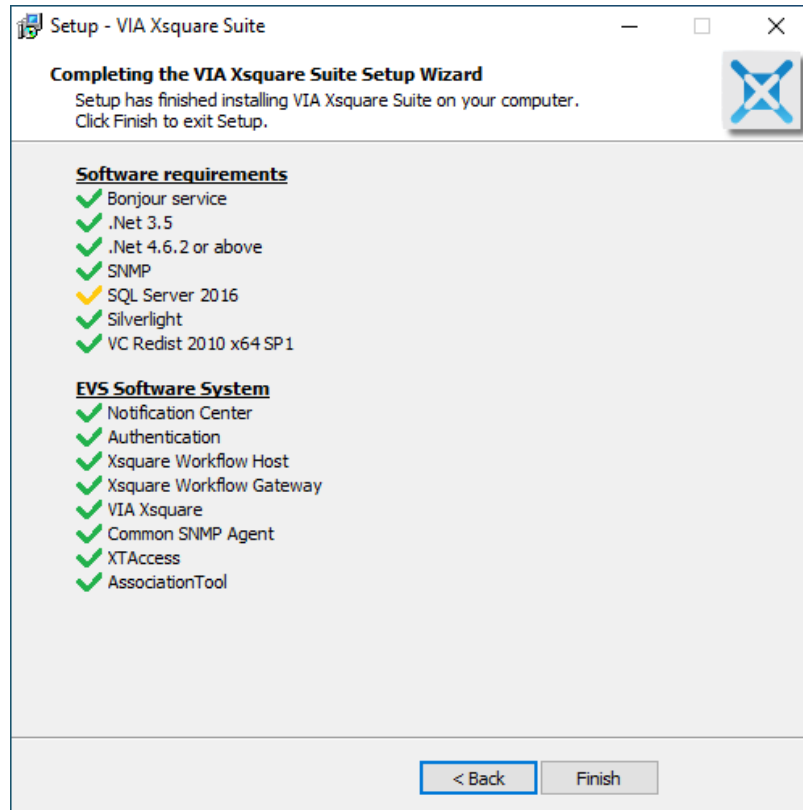
The components are checked as they are installed. If one of the components fails to install, a red cross is displayed next to it. You will have to reinstall the component using an Advanced setup afterwards, or contact your system administrator.



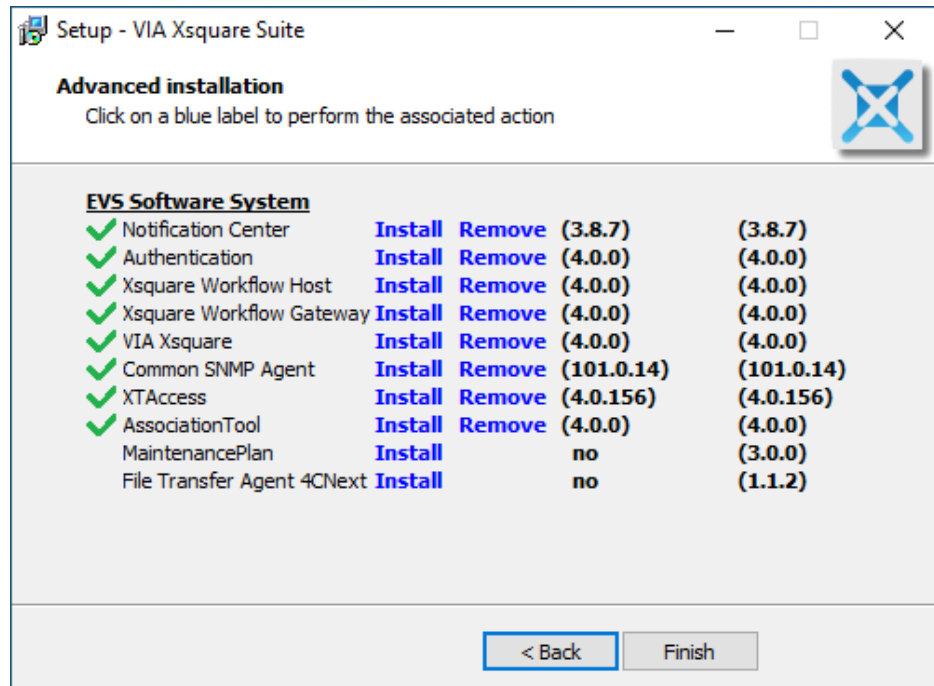
NOTE

For a full installation, you may be requested to restart your computer once some external software components have been installed. When your computer has restarted, launch the VIA Xsquare installation wizard again and continue the installation of the EVS Software System components.

The following screenshot shows the Installing window during a full installation in Standalone mode, when all the components have been upgraded:



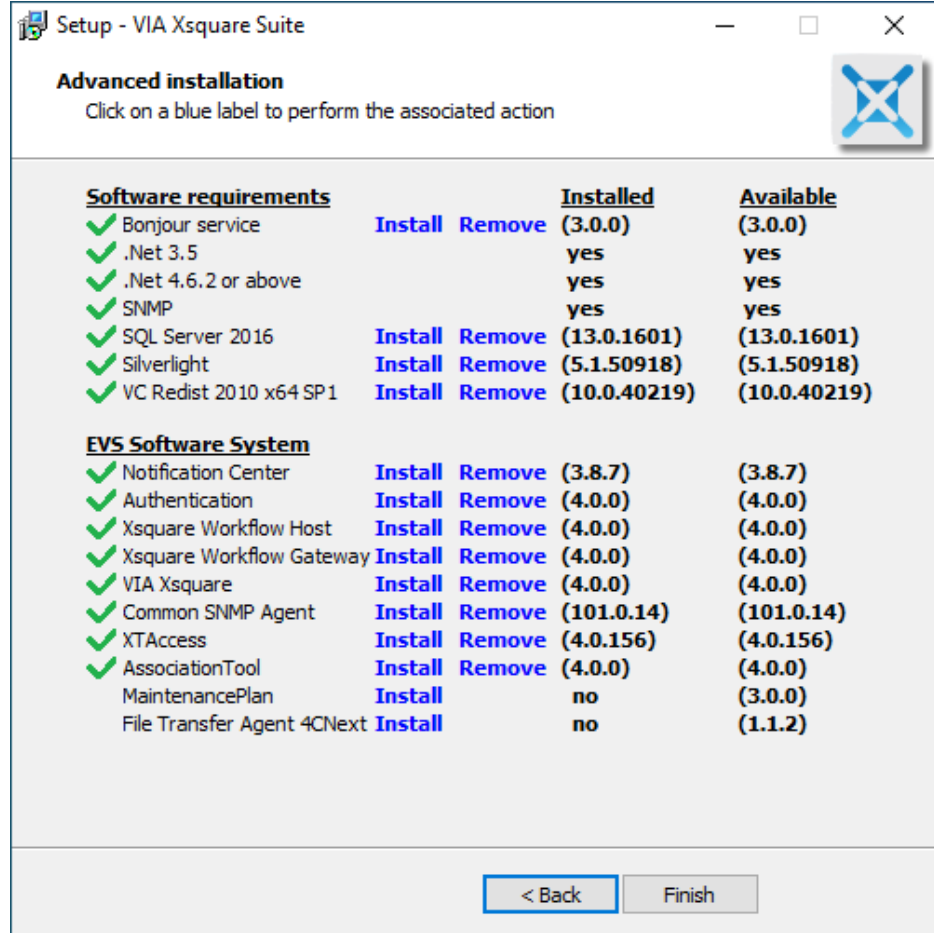
The following screenshot shows the Installation window in a light installation in Standalone mode when all the EVS software components have been upgraded:





- If you have selected the Advanced setup, you need to manually click the **Install** or **Remove** buttons next to each installation component to install the upgraded version or remove it.

The following screenshot shows how the Installing window looks like during a full installation in Advanced mode:



6. When all the necessary components have been installed, click **Finish**.

Once the installation is complete, the following application shortcuts are created on the desktop:



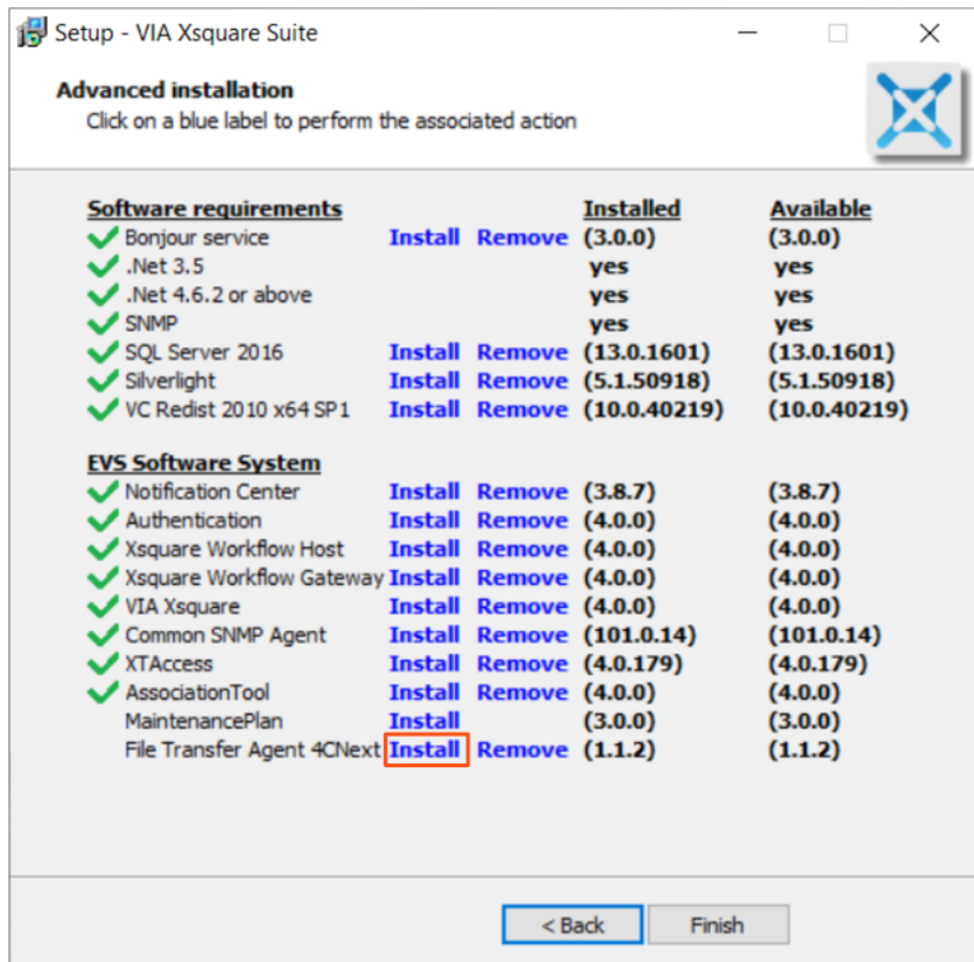
When VIA Xsquare is running, XTAccess always needs to be started. The small XTAccess icon in the notification area (right) of the taskbar is displayed when the application is open.

4.4. Installing FTA for C-Next

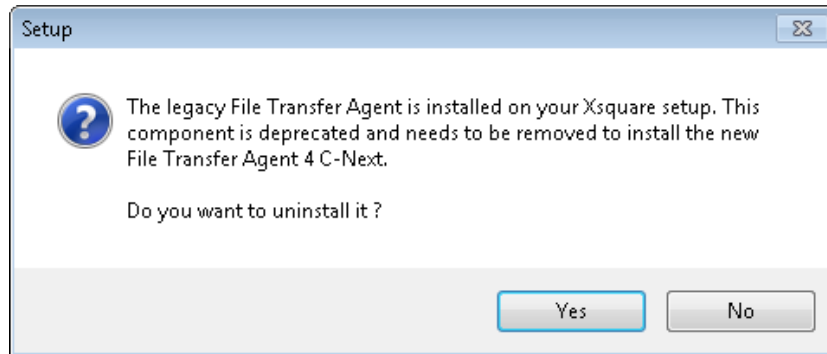
If you need to upgrade VIA Xsquare, first launch the appropriate VIA Xsquare installer to upgrade the whole VIA Xsquare suite, and potentially any required external software.

Once you have upgraded VIA Xsquare, proceed as follows to install the FTA agent:

1. Launch the VIA Xsquare light installation wizard and follow the installation steps 1 to 3 as described in the main installation procedure in section "Installing VIA Xsquare" on page 3.
2. In the Installation Type window, select **Advanced Setup** and click **Next**.
3. In the Advanced Installation window, select **Install** next to **File Transfer Agent 4CNext**.

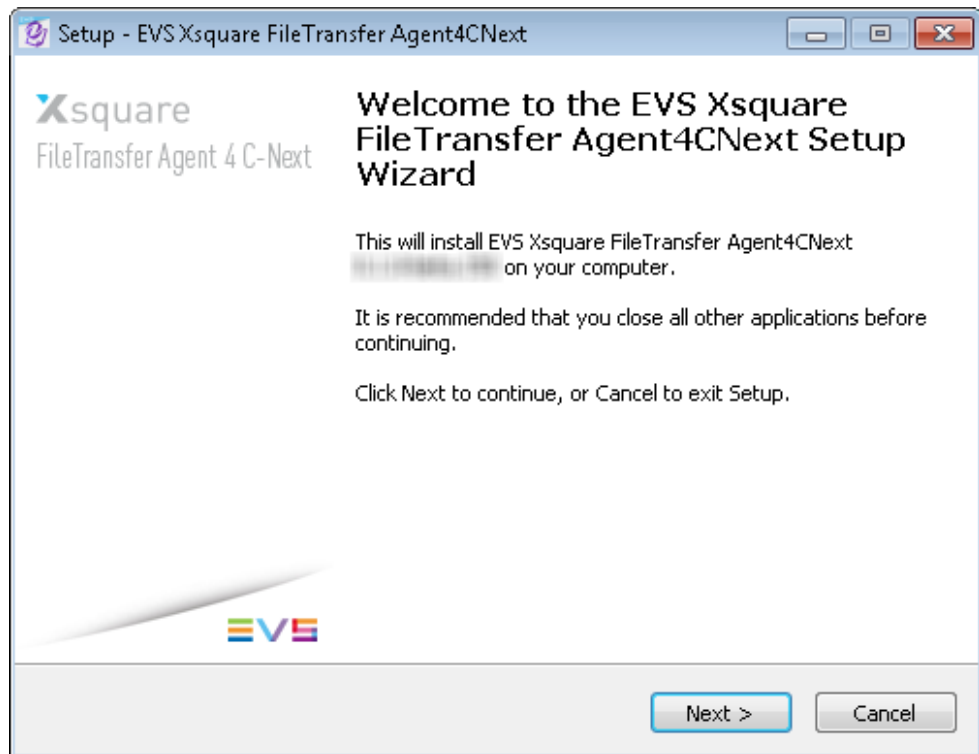


- If a legacy File Transfer Agent is still installed on your VIA Xsquare setup, you will be asked to uninstall it. Click **Yes** to do so:

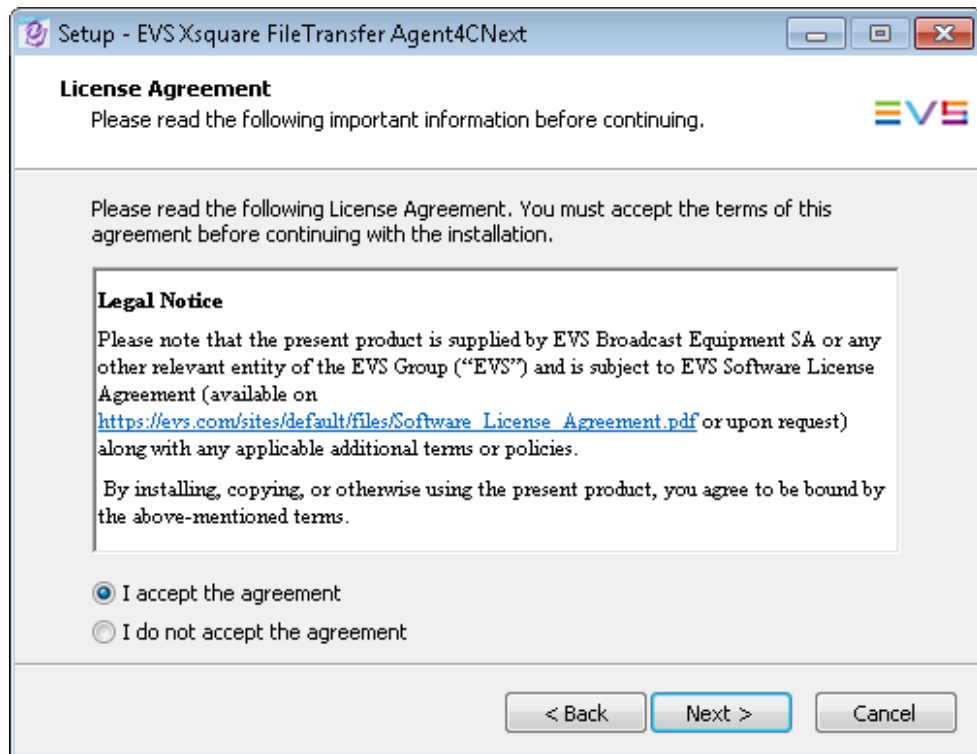


The File Transfer Agent Setup wizard opens.

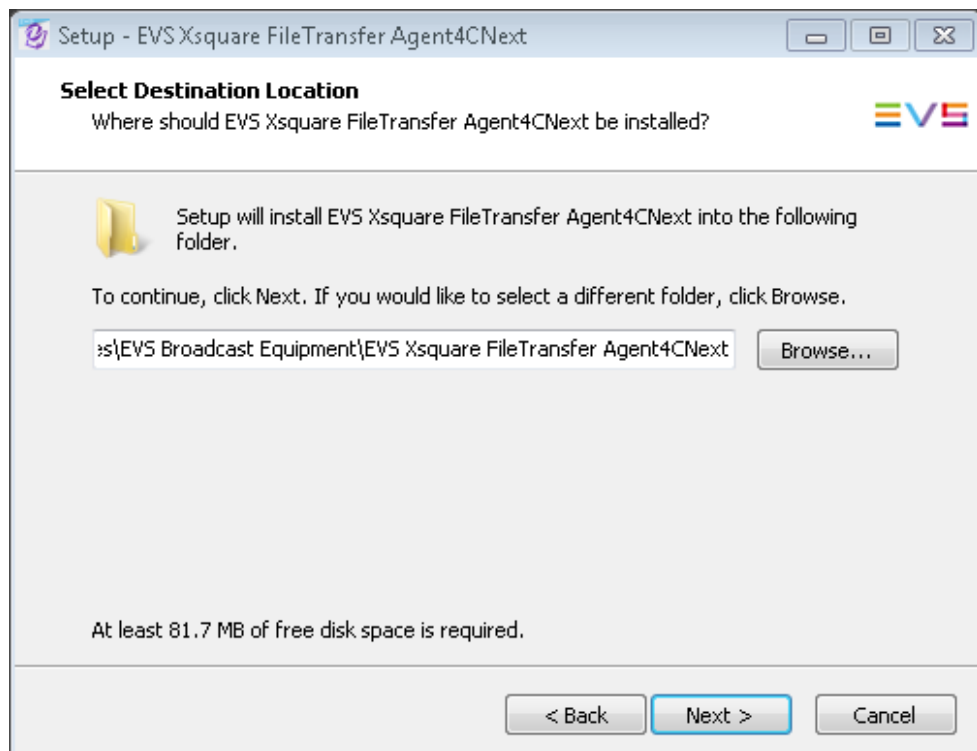
- In the Welcome window, click **Next**.



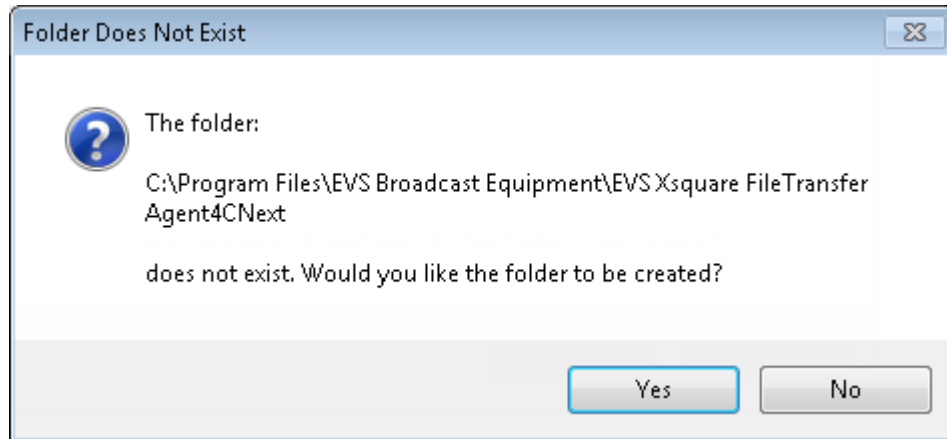
6. In the License Agreement window, read the agreement and accept it:



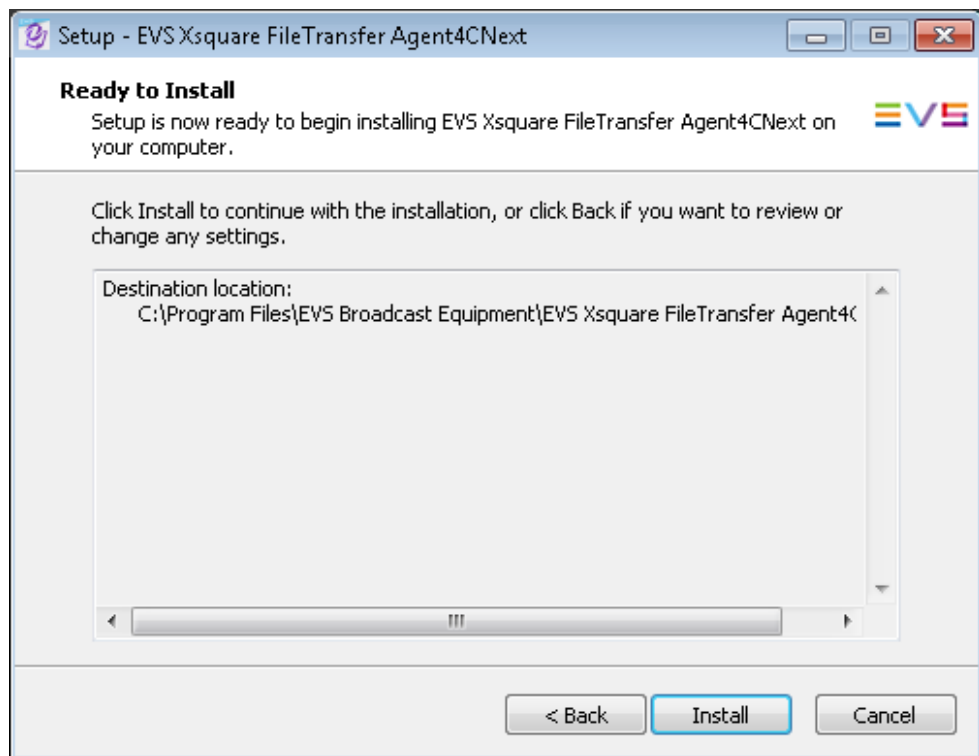
7. In the Select Destination Location window, select the destination directory to install the FTA for C-Next and press **Next**:



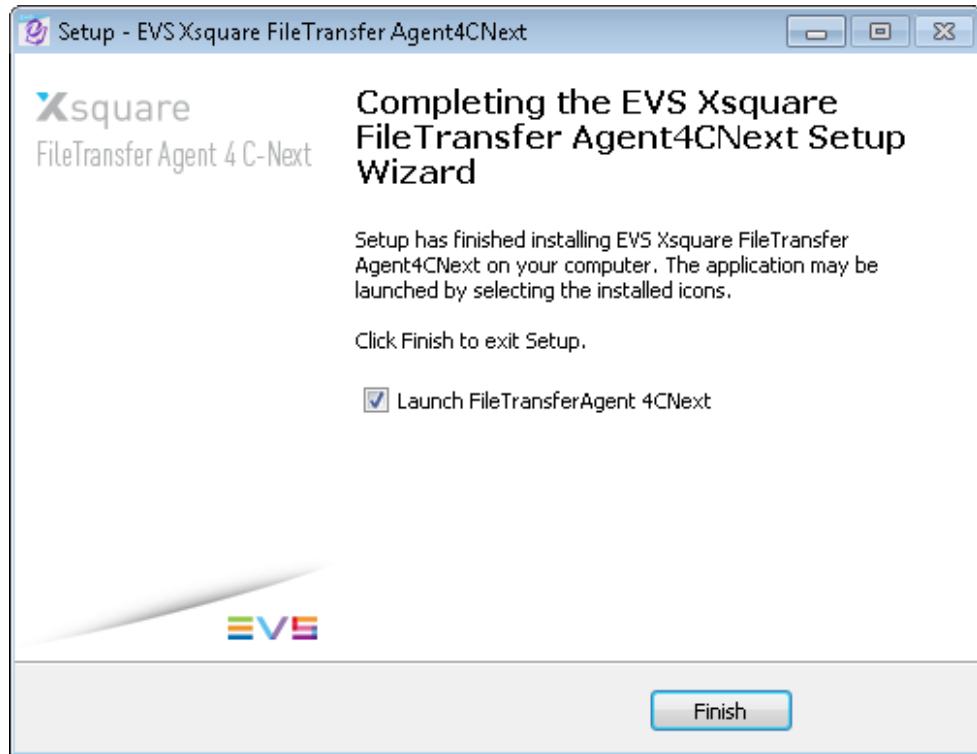
8. If you install the FTA for C-Next for the first time, click **Yes** in the following message to confirm you want to create the specified folder:



9. In the Ready to Install window, click **Install**.

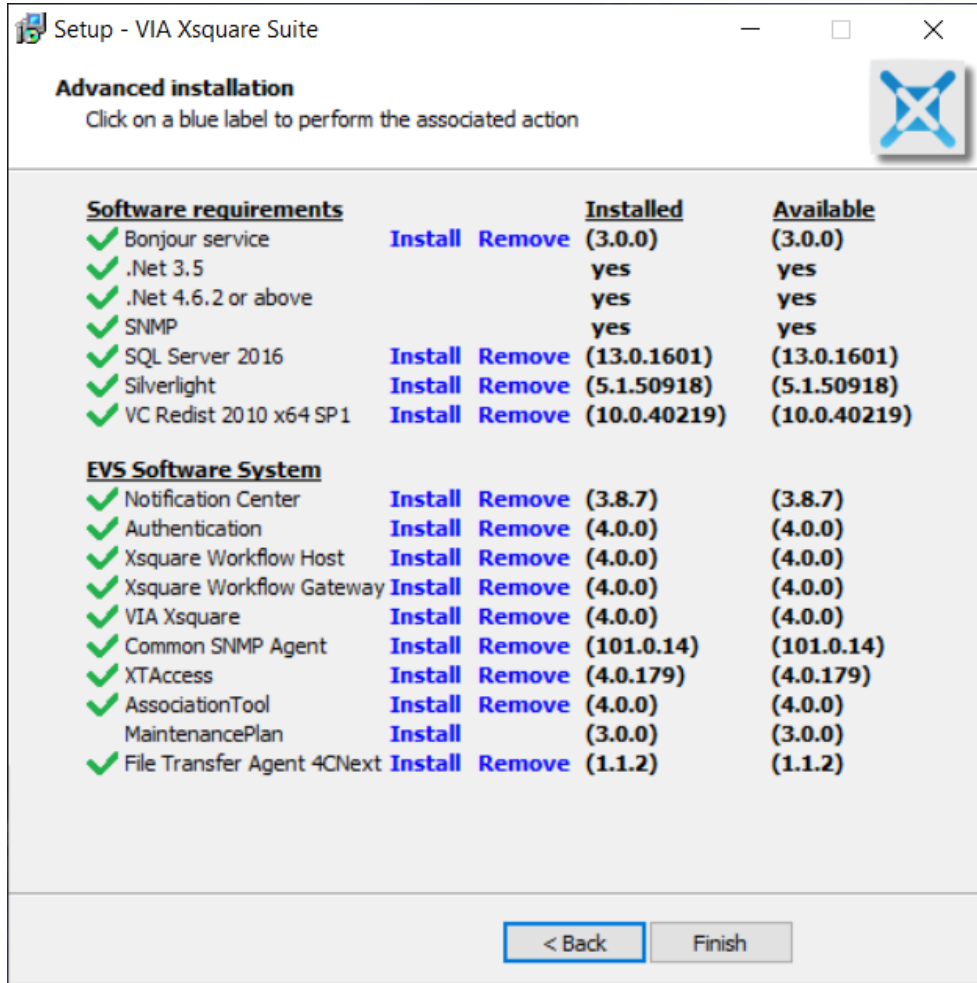


- When the installation is over, the Completing the Installation window opens. Click **Finish** in this window:

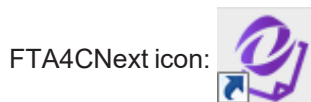




11. In the Advanced installation window of the VIA Xsquare Suite installer, you will see the FTA for C-Next is now installed. Click **Finish** to exit the installer.



Once the installation is complete, the following application shortcut is created on the desktop:



When VIA Xsquare is running, the FTA4CNext needs to be started. The small FTA4CNext icon in the notification area (right) of the taskbar is displayed when the application is open.



NOTE

Refer to the VIA Xsquare User Manual, section "Setting up a File Transfer Agent for C-Next" for detailed information on how to configure an FTA for C-Next.

5. VIA Licensing Management

Introduction

To perform basic tasks (grab, delete, move and copy jobs and create metadata), no VIA License is necessary. Destination Licenses are needed for rewrapping and transfers between XS- and XT-VIA servers. For all other jobs (transcoding, miscellaneous video processing, EDL rendering and SDR/HDR static conversion), Advanced licenses are also required on the XTAccess servers, in addition to the Destination licenses. For SDR/HDR dynamic conversion, a Premium license is required together with the Destination and Advanced licenses.



NOTE

The number of licenses required will depend upon the number of concurrent jobs that have to be performed, and the number of destinations in these jobs.

Available Job Types	No License	Destination License	Destination + Advanced	Destination + Advanced + Premium
Grab, delete, move, copy, create metadata	✓	✓	✓	✓
Ingest to Avid (AAF or Interplay)	Covered by EVS Avid Tools pricing			
Rewrap	✓	✓	✓	✓
Transfer to/from XS/XT-VIA (no transcoding, or proxy backup)		✓	✓	✓
Transcoding			✓	✓
Misc. video processing (logo, burn TC, audio matrix, etc.)			✓	✓
EDL rendering (smart or with transcoding)			✓	✓
SDR/HDR static conversion			✓	✓
SDR/HDR dynamic conversion				✓

How to Install a VIA License

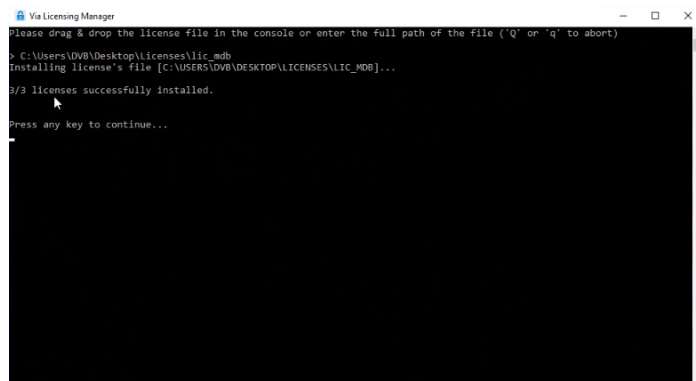
1. Open the VIA Licensing Manager by clicking on the desktop shortcut on the XTAccess server that is scheduled to perform the advanced processing:



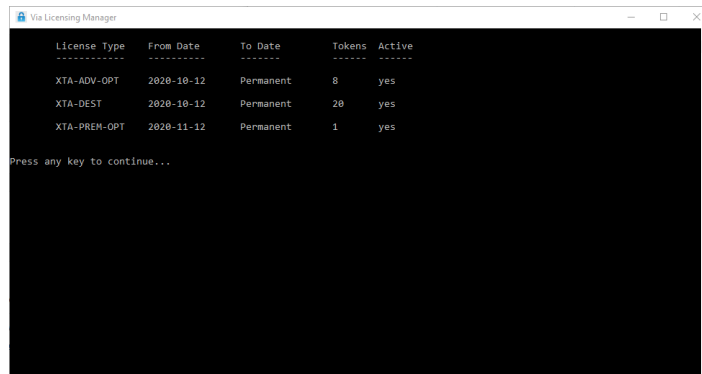
The following panel opens with a command line and 5 menu options to perform the various steps.



2. Generate the locking code by entering "1" in the command line. The screen will display the device's unique locking code. You should send this code to EVS support, in order to receive the specific license file for this device.
3. The license can then be installed by entering "3" in the command line and dragging & dropping the file or entering the file path here.



Once the licenses are installed, they can be displayed by entering menu option "2" in the command line.



License Type	From Date	To Date	Tokens	Active
XTA-ADV-OPT	2020-10-12	Permanent	8	yes
XTA-DEST	2020-10-12	Permanent	20	yes
XTA-PREM-OPT	2020-11-12	Permanent	1	yes

Press any key to continue...

In the third row in the above image for example, we can see that there is a permanent Premium license installed since 12/11/2020 on the device.

It is also possible to check the number and type of installed licenses on each server in the Licenses column of the Orchestration panel. The maximum number of available licenses can also be checked in the relevant columns here.

List of Codes

The following types of licenses are currently available:

VIA Xsquare Destination Licenses

- **XTA-20DEST-FLEX**: pack of 20 destinations (for 1 XTA), annual subscription
- **XTA-5DEST-GO**: pack of 5 destinations (for 1 XTA), permanent license.

VIA Xsquare Advanced Licenses

- **XTA-ADV-OPT-FLEX**: Advanced option per destination, annual subscription
- **XTA-ADV-OPT-GO**: Advanced option per destination, permanent license.

VIA Xsquare Premium Licenses

- **XTA-PREM-OPT-FLEX**: Premium option per destination, annual subscription
- **XTA-PREM-OPT-GO**: Premium option per destination, permanent license.

Corporate
+32 4 361 7000

North & Latin America
+1 973 575 7811

Asia & Pacific
+852 2914 2501

Other regional offices
www.evs.com/contact

EVS Headquarters
Liège Science Park
13, rue Bois St Jean
B-4102 Seraing
Belgium

EVS Broadcast Equipment is continuously adapting and improving its products in accordance with the ever changing requirements of the Broadcast Industry. The data contained herein is therefore subject to change without prior notice. Companies and product names are trademarks or registered trademarks of their respective companies.



To learn more about EVS go to www.evs.com