

INSTALLATION MANUAL

Version 3.6 – April 2016



Xsquare.



Disclaimer

This manual and the information contained herein are the sole property of EVS Broadcast Equipment SA and/or its affiliates (EVS) and are provided “as is” without any expressed or implied warranties, including, but not limited to, the implied warranties of merchantability and fitness for a particular purpose. In particular, EVS makes no warranty regarding the use or the consequences of use of this manual and the information contained herein. Furthermore, EVS may not be held liable for any direct or indirect, incidental, punitive or consequential loss, damage, cost or expense of any kind whatsoever and howsoever resulting from the normal or abnormal use of this manual and the information contained herein, even if advised of the possibility of such loss, damage, cost or expense.

While every effort has been made to ensure that the information contained in this manual is accurate, up-to-date and reliable, EVS cannot be held liable for inaccuracies or errors that may appear in this publication. The information in this manual is furnished for informational purpose and use only and subject to change without notice.

This manual cancels and replaces any previous versions thereof.

Copyright

Copyright © 2012-2016 EVS Broadcast Equipment SA. All rights reserved.

This manual may not be reproduced, transcribed, stored (in a database or an retrieval system), translated into any language, computer language, transmitted in any form or by any means – electronically, mechanically, printed, photocopied, optically, manually or otherwise – in whole or in part without the prior written consent of EVS.

Trademarks

All product and brand names are registered trademarks and trademarks of EVS or of their respective owners.

Improvement Requests

Your comments will help us improve the quality of the user documentation. Do not hesitate to send improvement requests, or report any error or inaccuracy on this user manual by e-mail to doc@evs.com.

Regional Contacts

You will find the full list of addresses and phone numbers of local offices on the EVS website on the following page: <http://www.evs.com/contacts>.

User Manuals on EVS Website

The latest version of the user manual, if any, and other user manuals on EVS products can be found on the EVS download center, on the following webpage: <http://www.evs.com/downloadcenter>.

Table of Contents

TABLE OF CONTENTS	III
WHAT'S NEW?	IV
1. XSQUARE OVERVIEW	1
2. SOFTWARE INSTALLATION	3
2.1 Full Installation vs. Light Installation	3
2.2 Installation Types	3
2.3 Installing Xsquare	4
2.4 Installing FTA Agent	10
3. XSECURE MANAGEMENT	14
3.1 Introduction	14
3.2 List of Codes	15

What's New?

In the user manual, the icon **NEW !** has been added on the left margin to highlight information on new and updated features.

The full list of modified and new features in version 3.6 is available in the release notes.

The following list covers the new features having an impact on the installer.

File Transfer Agent (FTA) installer available in the Advanced Installation

- See section “Installation Types”, on page 3.
- See section “Installing FTA Agent”, on page 10.

License Code for File Transfer Agent (FTA)

- See section “List of Codes”, on page 15.

1. Xsquare Overview

The goal of the Xsquare solution is to act as an orchestrator receiving job requests and dispatching them to the best Xsquare agent (loadbalancing, JOB API, etc), which means an Xsquare agent available and able to manage the requested job (transcoding, rewrap, etc).

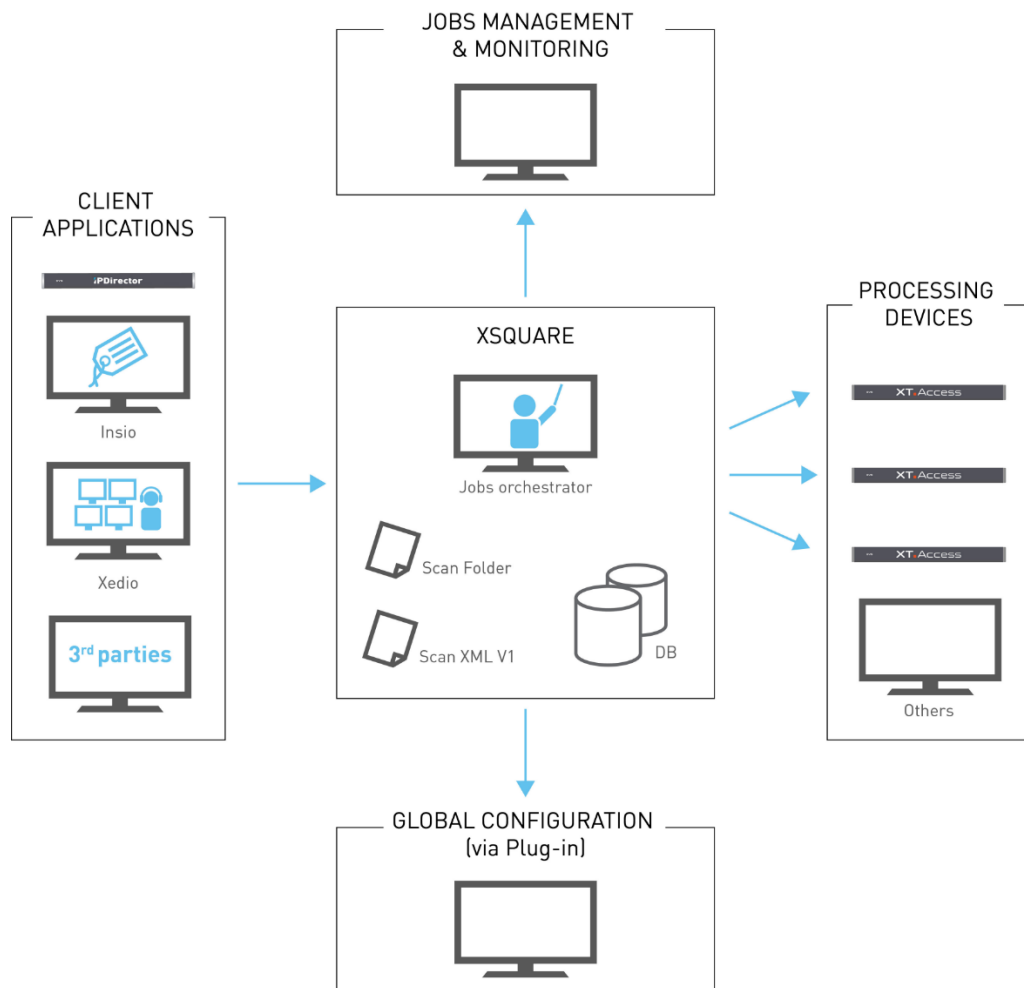
The Xsquare agents can be **XTAccess** or **File Transfer Agent (FTA)**.

All the jobs for XTAccess will go through Xsquare, which will be the central point to control XTAccess. XTAccess will not be directly visible to the users any more.

The jobs for FTA can be directly included in the XML job file, or be integrated into a more complex job, as a post-processing step, in XSquare.

The main advantages of this architecture are the following:

- One global Orchestrator for all the jobs
→ improvement of jobs load balancing, dispatching and management.
- One global configuration tool
→ simplification of the engines configuration as well as the targets configuration.
- One global monitoring tool
→ simplification of the monitoring of all the jobs.
- Additional modules (Scan Folder, Scan XML v1) can be added to Xsquare
→ modularity



The clients (IPD, 3rd party, Xedio, etc) who want to create a job (transfer of media from A to B) will have only one unique interface (GUI, API, configuration): **Xsquare**

2. Software Installation

2.1 Full Installation vs. Light Installation

Two installation packages are provided:

- A **full** installation package to install the complete Xsquare application suite, required EVS services, as well as other software and services required to be able to work with the Xsquare suite (software requirements).

The installer file has the following name pattern: `XsquareSuiteInstaller
x.x.x.x.zip`




You can use this installation package for a new installation, or for an upgrade to a major release, for example an upgrade from Xsquare 2.3 to Xsquare 3.6.

- A **light** installation package to upgrade the Xsquare application suite. It includes the Xsquare suite and other EVS software components, but not external software required, which must have been previously installed.

The installer file has the following name pattern: `XsquareSuiteInstaller
x.x.x.x_update_from_Xsquare_3.x.x.zip`

You can use this installation package for an upgrade to a new minor release, for example an upgrade from Xsquare 3.5 to Xsquare 3.6.

Once any of the installation package has been unzipped, the installation package contains the Xsquare software suite with an executable and sub-installers in the Installers subfolder.

	Installers	23/03/2016 08:54	File folder	
	revision	14/03/2016 11:27	File	1 KB
	Xsquare_Suite_3.6_Setup.exe	14/03/2016 11:27	Application	560 KB



Warning

Xsquare 3.x is compatible with Windows 7 and Windows Server 2008.
It is not compatible with Windows XP or Windows Server 2003.

2.2 Installation Types

During the installation process, you will be able to choose among the following installation types:

- **StandAlone setup:** The installer will install Xsquare, XTAccess and all the required software. The installer will also automatically associate XTAccess to Xsquare. This Installation mode will not ask other confirmations or questions.
- **Orchestrator setup:** The installer will install Xsquare and all the required software but not XTAccess. This Installation mode will not ask other confirmations or questions.
- **Agent setup:** The installer will install XTAccess and all the required software but not Xsquare. This Installation mode will not ask other confirmations or questions.
- **Advanced setup:** The installer will show you all the software installed on your computer and you will be able to select manually the software to install.

This Installation mode will require for each installer other confirmations and questions. This mode must be used by EVS experts only.

In this mode, the following information are displayed:

- version number of installed components;
- version number of components available in the installation package;
- **Install** and **Remove** buttons for each component that make it possible to install or uninstall individual components.

NEW !



Note

The FTA agent can only be installed via the Advanced installation. See Installing the FTA agent

2.3 Installing Xsquare

To install the Xsquare suite, proceed as follows:

1. Copy the requested installation package in a temp directory (e.g. C:\Install Software\Xsquare\):
 - The `XsquareSuiteInstaller x.x.x.x.zip` for a full installation or an upgrade to a major version, for example from , for example from Xsquare 2.3 to Xsquare 3.5.
 - The `XsquareSuiteInstaller x.x.x.x_update_from_Xsquare_3.x.x.zip` for an upgrade to a minor version, for example from Xsquare 3.3 to Xsquare 3.6.
2. Unzip the installation package.
3. Run Xsquare Suite install shield and then follow the steps of the Setup wizard.

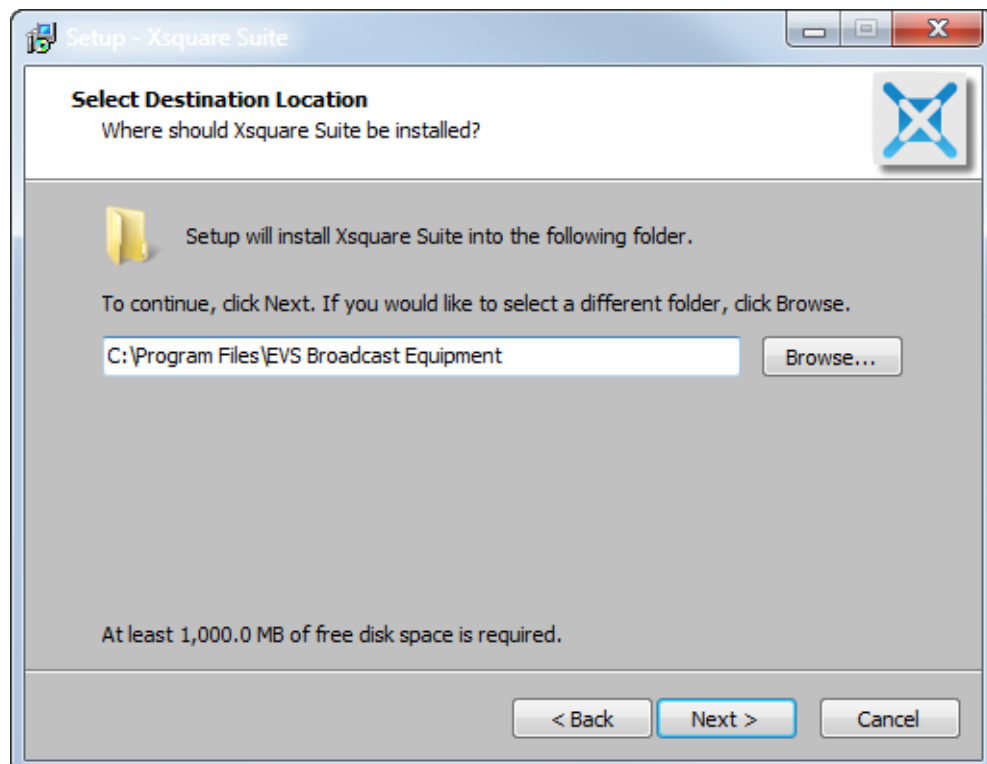
The Welcome window appears.

4. On the Welcome window, press **Next**:



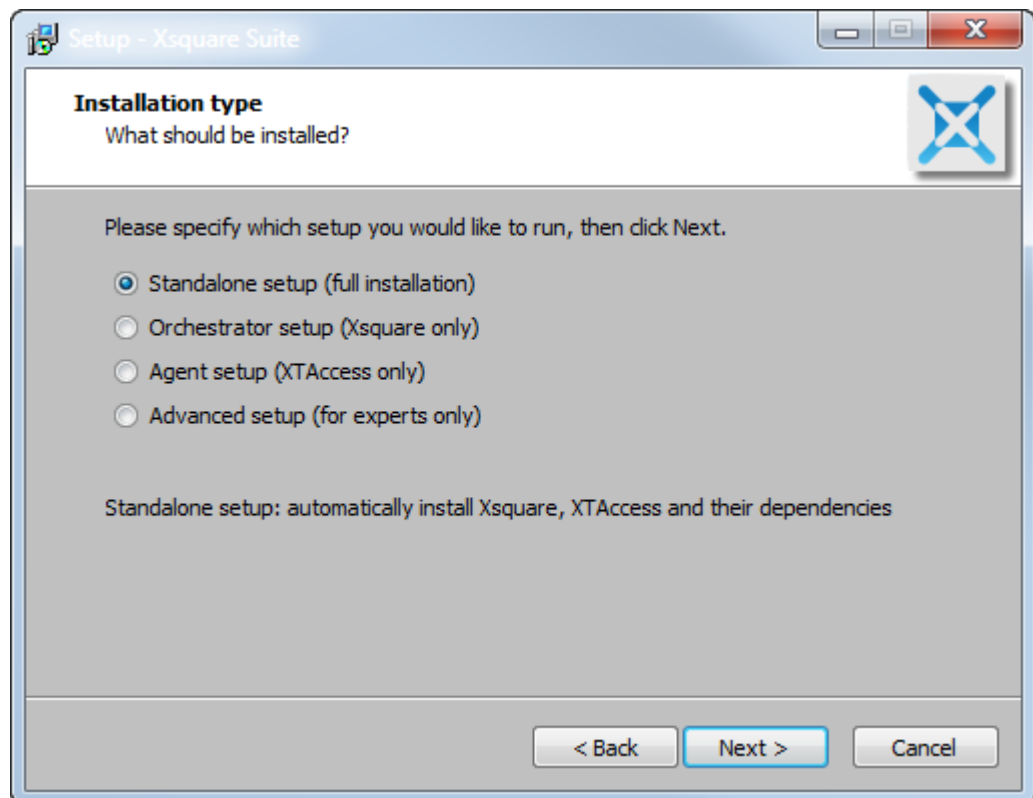
The Select Destination Location window appears.

5. In the Select Destination Location window, select the destination directory to install the new software and press **Next**:



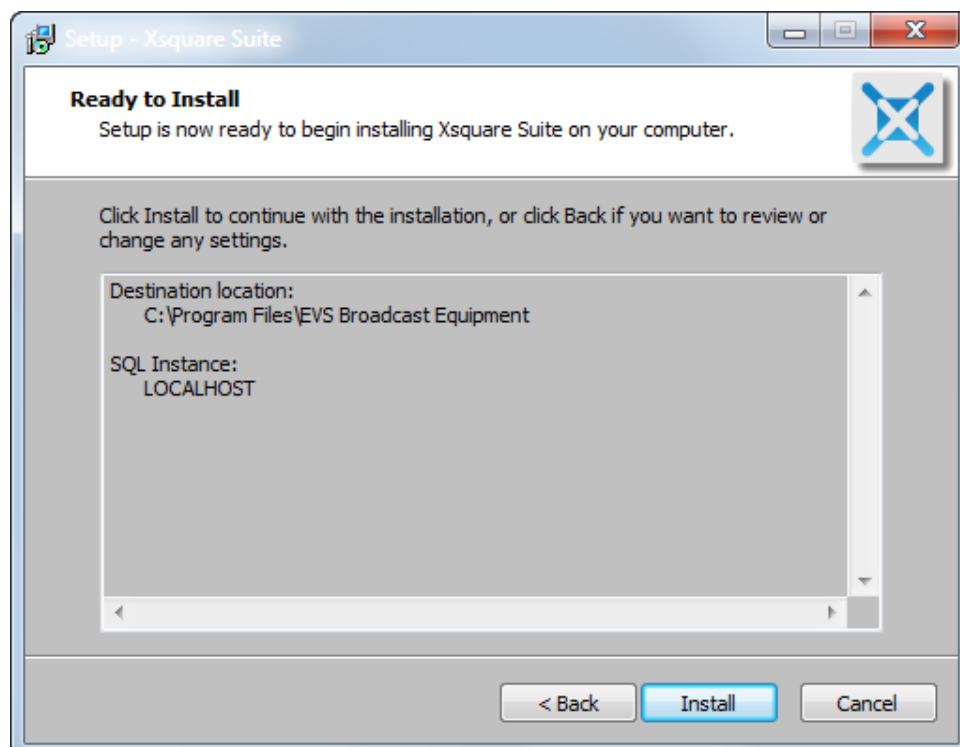
The Installation Type window appears.

6. In the Installation Type window, select an installation type (See section 2.2 “Installation Types” for more information) and click **Next**.



The Ready to Install window appears.

7. The Ready to Install window summarizes the selected location for Xsquare, and the database name. Click **Install**.



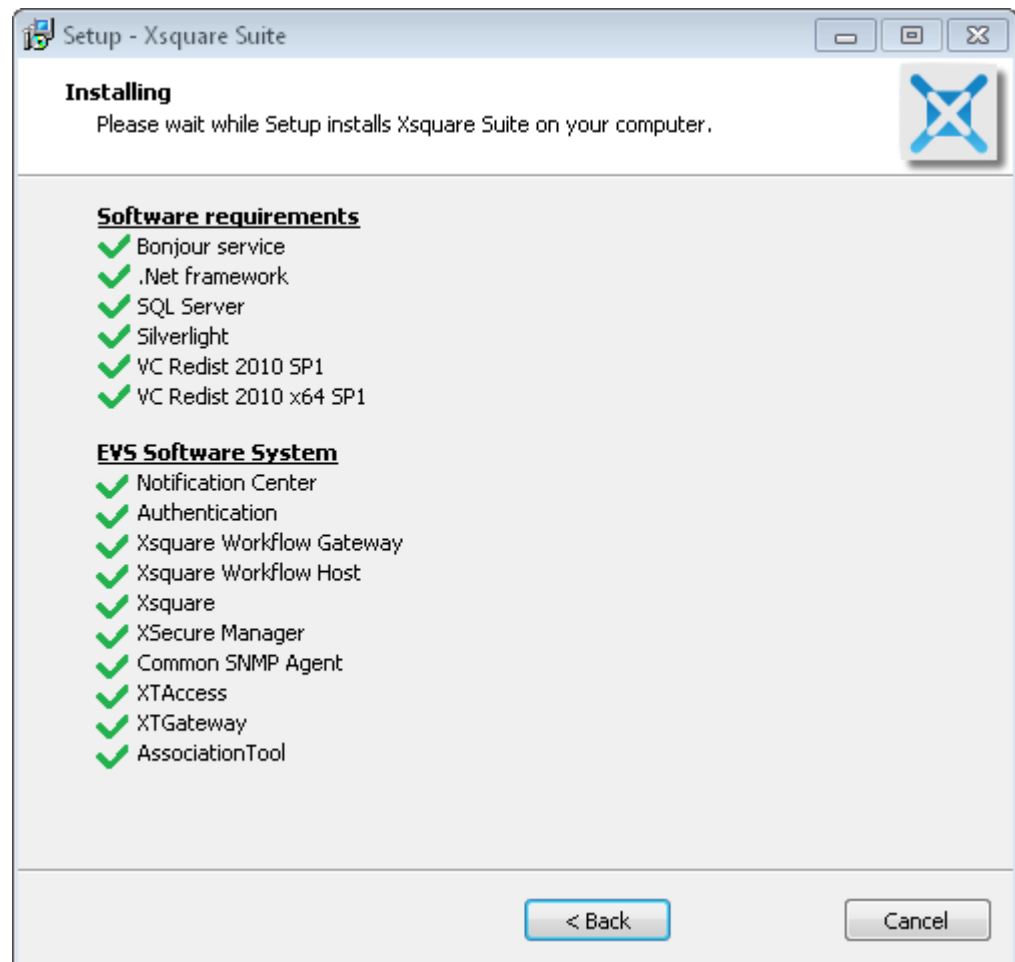
The Installing window opens.

8. In the Installing window, two behaviors are possible:

- If you have selected the **Standalone**, **Orchestrator** or **Agent** setup, the various installation components are called and installed automatically one after the other.

As the components are installed, they are checked. If one of the components fails to install, a red cross is displayed next to it: You will have to reinstall the component via an Advanced setup afterwards, or contact your system administrator.

The following screenshot shows the Installing window in a full installation in Standalone mode when all the components have been upgraded:

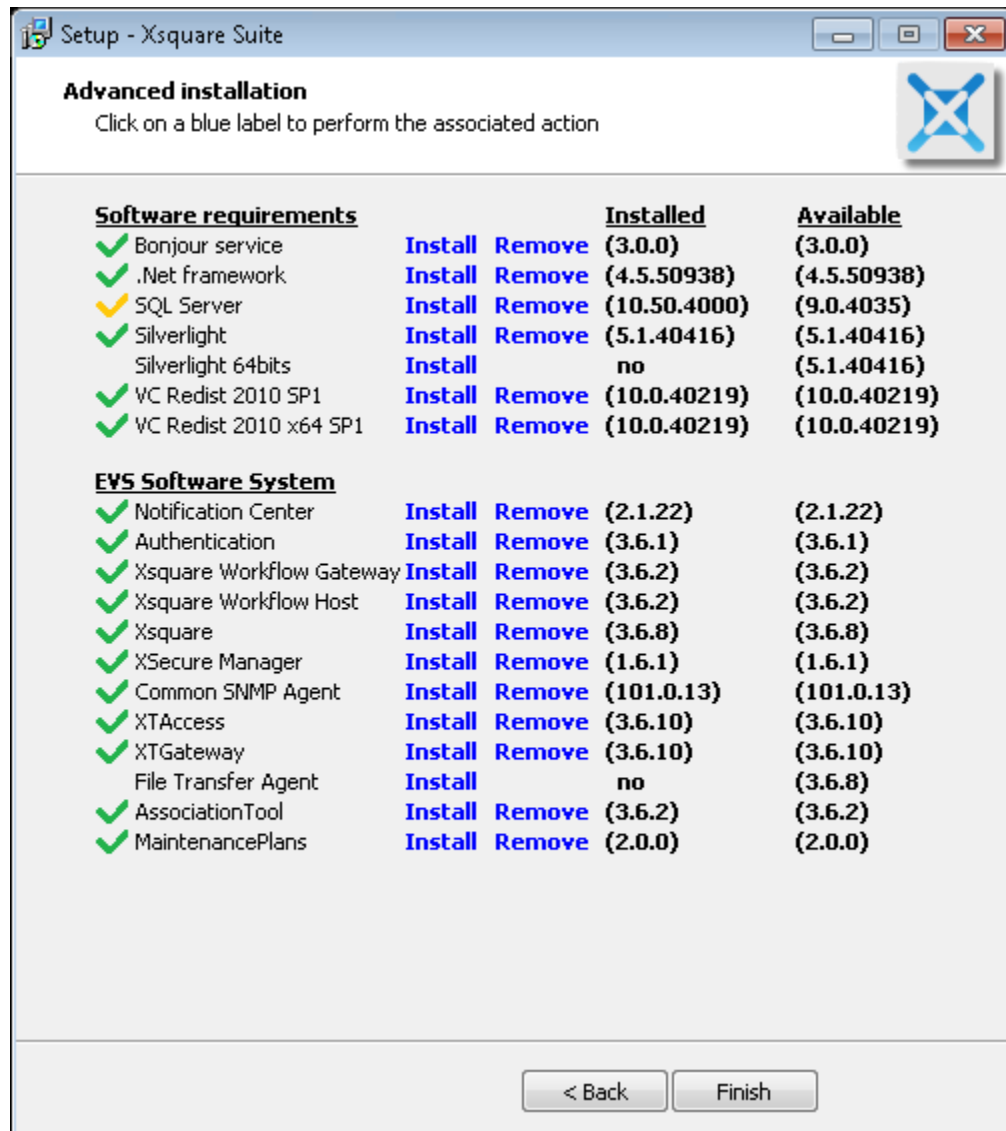


The following screenshot shows the Installation window in a light installation in Standalone mode when all the EVS software components have been upgraded:



- If you have selected the **Advanced** setup, you need to manually click the **Install** or **Remove** buttons next to each installation component to install the upgraded version or remove it.

The following screenshot shows the Installing window for a full installation in Advanced mode:



9. When all (requested) components have been installed, click Finish.

Once the installation is completed, the following application shortcuts have been created on the desktop:

Xsquare icon:



XTAccess icon:



Association Tool icon:



XSecure icon:



When Xsquare is running, XTAccess always needs to be started. The small XTAccess icon in the notification area (right) of the taskbar is displayed when the application is open.

2.4 Installing FTA Agent

NEW !

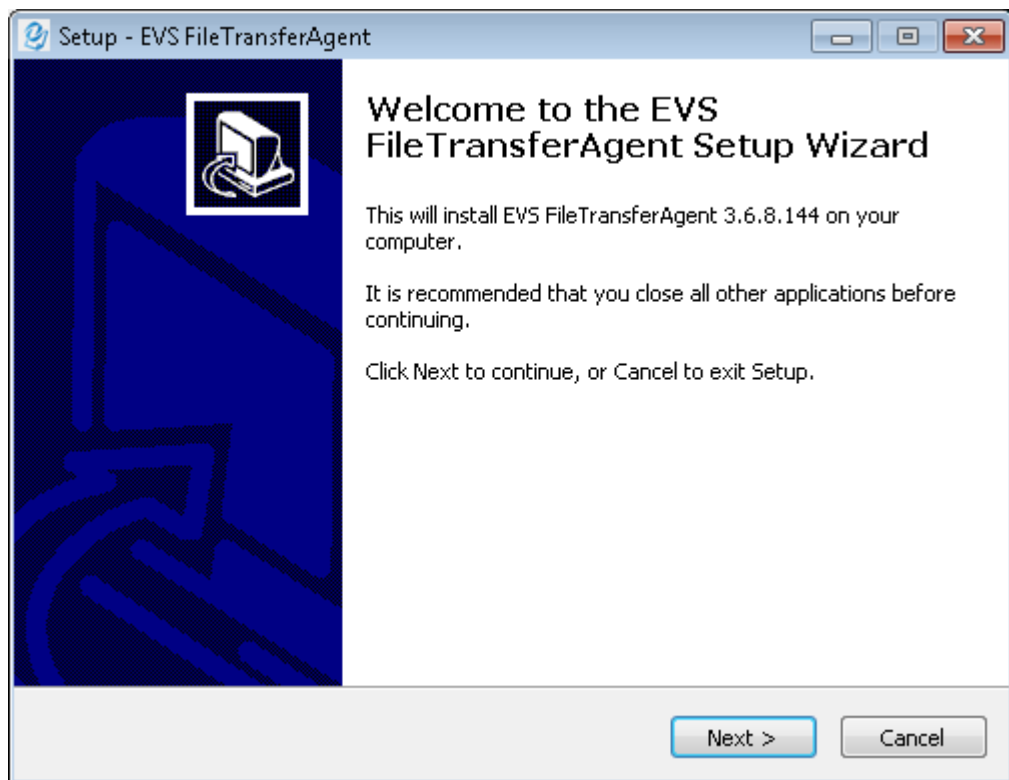
If you prefer to first upgrade Xsquare using an automatic installation type, launch first the automatic installation process selecting the Standalone or Orchestrator setup.

Once you have upgraded Xsquare, proceed as follows to install the FTA agent:

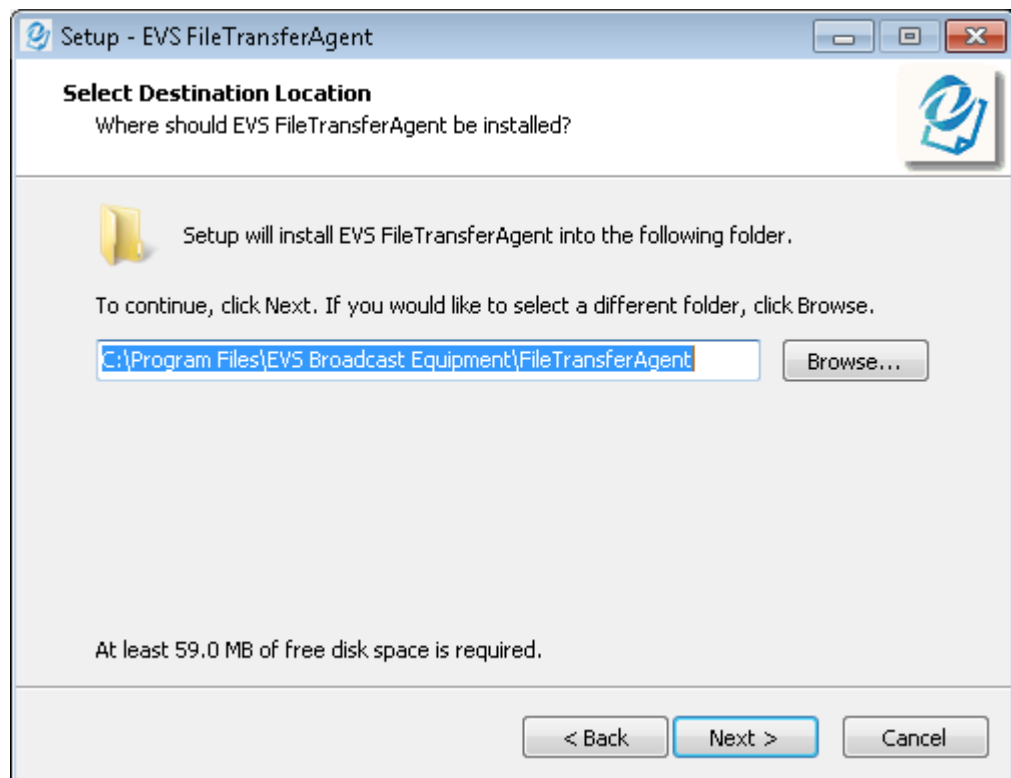
1. Launch the Xsquare installation wizard and go through the installation steps 1 to 5 as described in the main installation procedure in section 2.3 “Installing Xsquare”, on page 4.
2. In the Installation Type window, select **Advanced Setup** and click **Next**.
3. In the Advanced Installation window, select **Install** next to **File Transfer Agent**.

The File TransferAgent Setup wizard opens.

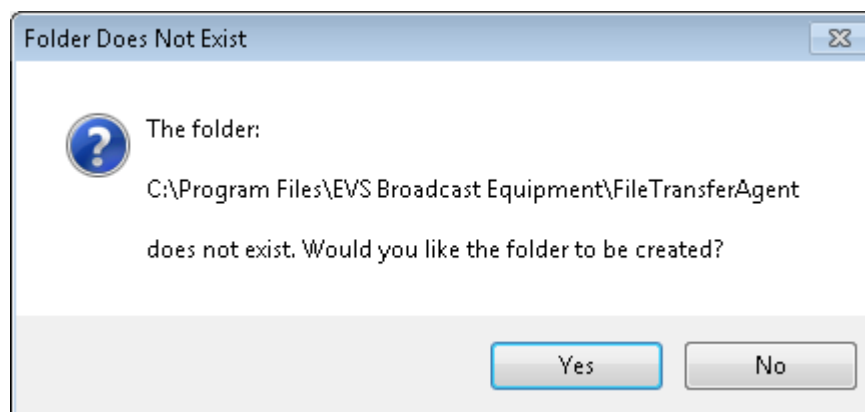
4. In the Welcome window, click **Next**.



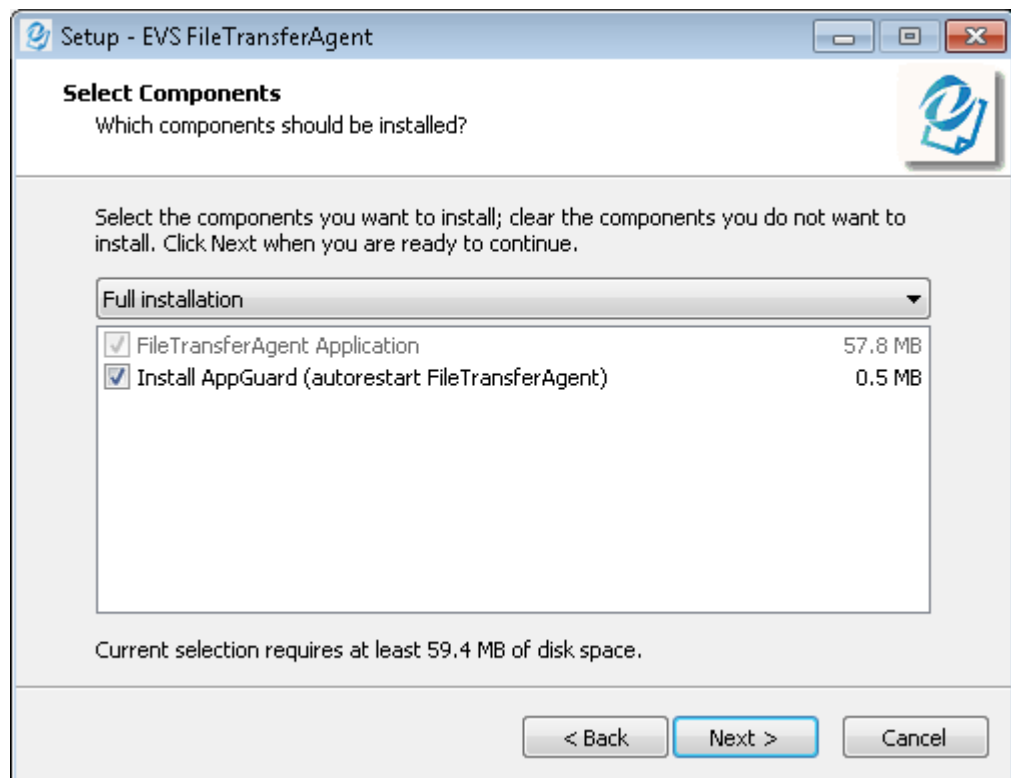
5. In the Select Destination Location window, select the destination directory to install the FTA agent and press **Next**:



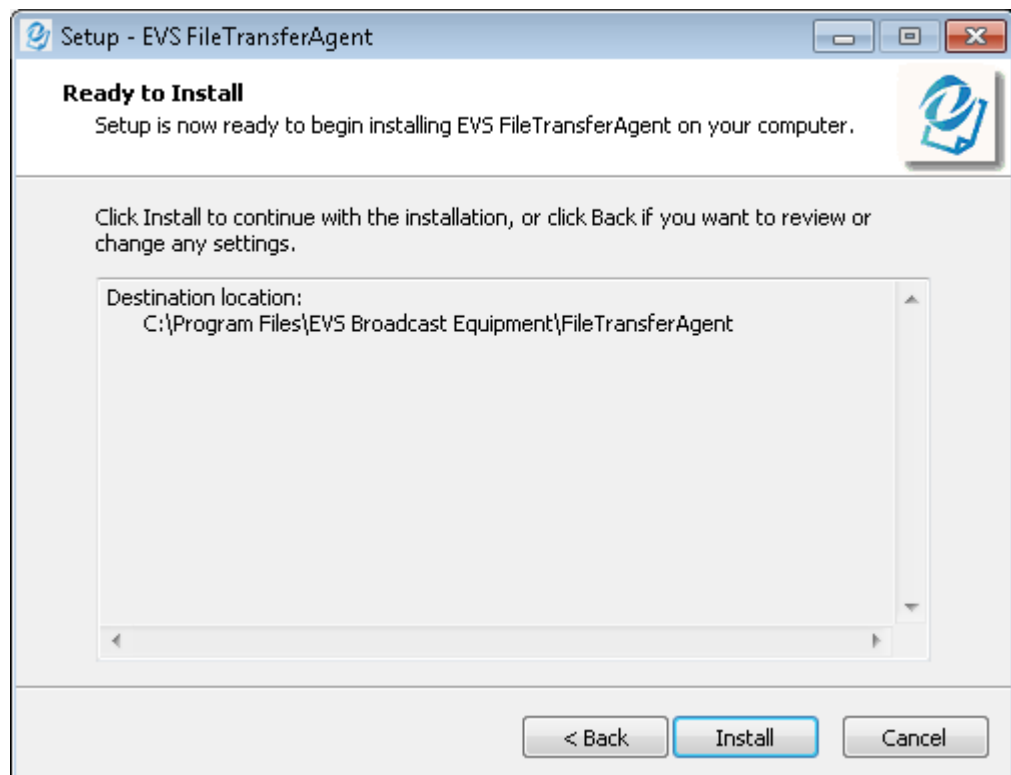
6. If you install the FTA for the first time, click **Yes** in the following message to confirm you want to create a new folder for the FTA.



7. In the Select Components window, both components, the FTA and AppGuard, need to be selected if AppGuard is not installed yet. Click **Next**.



8. In the Ready to Install window, click **Install**.



9. When the installation is over, the Completing the Installation window opens. Click **Finish** in this window.

Once the installation is completed, the following application shortcuts have been created on the desktop:

FTA icon:



When Xsquare is running, the FTA needs to be started. The small FTA icon in the notification area (right) of the taskbar is displayed when the application is open.

3. XSecure Management

3.1 Introduction

To be able to manage more than 4 XTAcess with Xsquare and to be able to have the Xsquare user rights, it is necessary to have an Xsquare license.

XSecure uses hardware information from the device where Xsquare is running. This means that it is impossible to exchange licenses or codes between devices.

XSecure licenses are also necessary for the Xsquare agents (XTAcess and FTA).

Please refer to the XSecure user manual to:

- Start XSecure Manager.
- Collect information about your device.
- Request a license key from the EVS support.
- Import new license keys.

XSecure Manager version 1.06.01

Identification

System ID: 8V2N-2Y5-LGR-5D1 Serial Number: 52640

Customer Information

Company: EVS Broadcast Equipment

First Name: EVS Last Name: EVS

Email Address: info@evs.com

Phone Number:

Computer Description: XTA-JLY-1

Warning

Note : this form must be filled in on the computer where the EVS application will be used

License List

Application	Module	Type	From	To	Code
120 - XFly Streamer	10 - Base Package	PERM			8V2N-2Y5-LGR-5D1
130 - Xsquare	10 - Base Package	PERM			8V2N-2Y5-LGR-5D1
130 - Xsquare	20 - Unlimited Engines	PERM			8V2N-2Y5-LGR-5D1
140 - C-Cast Distant	10 - Base Package	PERM			8V2N-2Y5-LGR-5D1
140 - C-Cast Distant	20 - Demo (do not use anymore)	PERM			8V2N-2Y5-LGR-5D1

Global Expiration Date:

Operations

Request Select this option to generate a License Request File that must be sent by e-mail to your EVS support representative. Then you will receive a License Key File to activate your application.

Import Key File Select this option to import the License Key File sent by EVS and activate the corresponding licenses.

Manually type the license key here, then click on "Load" to activate the corresponding license.

Load **Quit**

3.2 List of Codes

Xsquare Application code 130

- **Module 10 – Base Package:** This module allows users to manage more than 4 XTAcess with Xsquare.
- **Module 20 – Unlimited Engines:** This module allows users to manage an unlimited number of XTAcess applications with Xsquare.

130 - Xsquare	10 - Base Package	PERM
130 - Xsquare	20 - Unlimited Engines	PERM

XTAcess Application code 60

- **Module 10 – Base Package:** This module allows users to use XTAcess agents with Xsquare.
- **Module 20 – Transcoding:** This module allows users to perform jobs including transcoding with Xsquare (and XTAcess).

60 - XTAcess	10 - Base Package	PERM
60 - XTAcess	20 - Transcoding	PERM

NEW !

FTA Application code 65

- **Module 10 – Integration with Aspera:** This module allows users to perform file transfers from local to distant locations using the integration with the Aspera file transfer accelerator.

65 - FTA	10 - Integration with Aspera	PERM
----------	------------------------------	------

EVS Headquarters
Liège Science Park
13, rue Bois St Jean
B-4102 Seraing
Belgium

Corporate
+32 4 361 7000

North & Latin America
+1 973 575 7811

Asia & Pacific
+852 2914 2501

Other regional offices
www.evs.com/contact



To learn more about EVS go to www.evs.com

EVS Broadcast Equipment is continuously adapting and improving its products in accordance with the ever changing requirements of the Broadcast Industry.
The data contained herein is therefore subject to change without prior notice. Companies and product names are trademarks or registered trademarks of their respective companies.