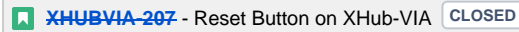


XHub-VIA Reset Button



At the first Install of a package in production, there is no default factory configuration.

Without any factory configuration, the XHub will fall back in LiveIP mode.

To setup the default factory configuration in **LiveIP**, plug a FAT32 USB stick with an empty file named **LiveIP** (without extension).

To setup the default factory configuration in **XNet**, plug a FAT32 USB stick with an empty file named **XNet** (without extension).

It is the first use of USB stick that fix the factory mode.

Any other use of the USB will just swap between **LiveIP** and **XNet** mode.

A reset without USB stick will fall back in factory default mode.

When pressing the reset button for **4 seconds**, the orange and red LED will be switched on and the startup configuration shall be set to the one of the default configurations (see above) and the default management IP configurations will be reset.

- LiveIP
 - 169.254.0.5 / 255.255.255.224 / no gateway
- XNet-VIA
 - 192.168.1.1 / 255.255.255.0 / 192.168.1.254

In the XNet case, you can add a file named **MgtIpAddr** (without extension) to easily configure the management IP address. The content must be in this order and the gateway can be omitted:

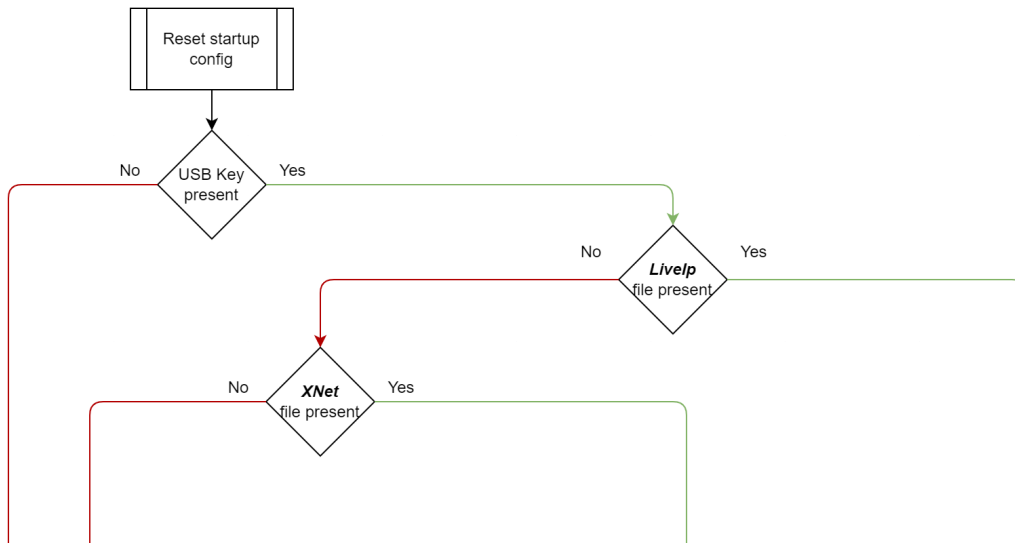
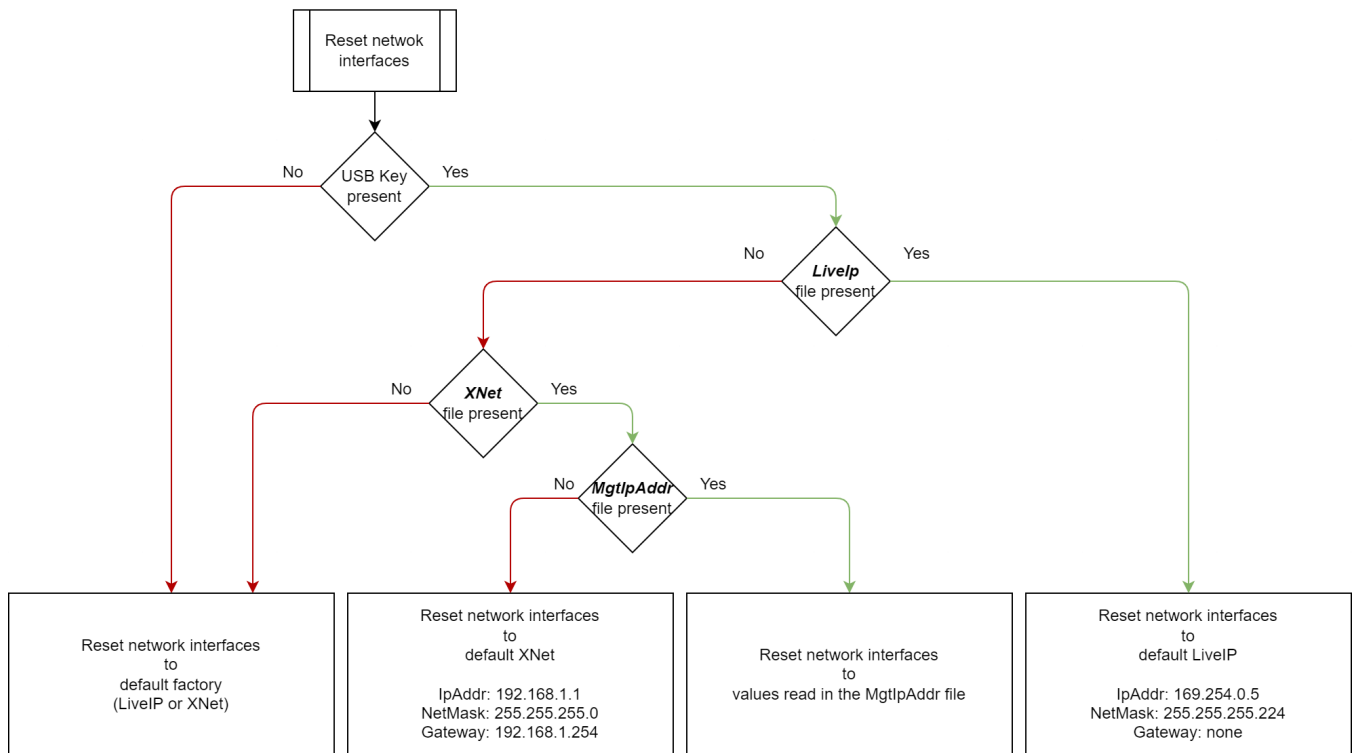
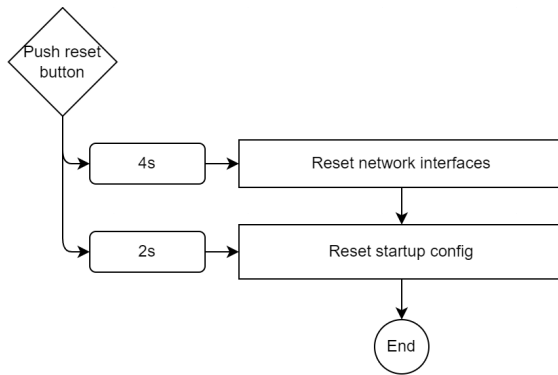
```
#IP Address
10.129.110.127

#NetMask
255.255.255.0

#GateWay
10.129.110.1
```

For production only

- To remove the default factory configuration, use the XH5_udp application to upload the **removeFactoryConfig.tar.gz** package (The file is located in C:\MatriceVSE\XH5\XH5_v4).
- Then use the USB stick (LiveIP/XNet) to configure the factory default.





The startup config
is reset to the default factory config



The Startup config become
The factory default XNet-VIA config
Network interface swap to default XNet



The Startup config become
The factory default LiveIp config
Network interface swap to LiveIP