

---

---

## TABLE OF CONTENTS

<b>1.</b>	<b>OVERVIEW.....</b>	<b>1</b>
<b>1.1.</b>	<b>SPECIFICATIONS.....</b>	<b>2</b>
1.1.1.	Electrical – AC Powered Versions .....	2
1.1.2.	Electrical – DC Powered versions.....	2
1.1.3.	Compliance .....	2
1.1.4.	Physical.....	3
1.1.5.	Cooling.....	3
<b>1.2.</b>	<b>COOLING – STANDARD VERSION .....</b>	<b>3</b>
1.2.1.	Fan Exhaust .....	3
<b>1.3.</b>	<b>COOLING – Q VERSION.....</b>	<b>4</b>
1.3.1.	Fan Exhaust.....	4
<b>1.4.</b>	<b>COOLING – QT VERSION.....</b>	<b>4</b>
1.4.1.	Fan Exhaust.....	4
<b>1.5.</b>	<b>MOUNTING .....</b>	<b>5</b>
<b>1.6.</b>	<b>POWER .....</b>	<b>5</b>
1.6.1.	Connecting the Power - AC Powered Frames .....	5
1.6.2.	Turning the Power On and Off .....	7
1.6.3.	Power Supply Status Indicators .....	8
<b>2.</b>	<b>FRAME STATUS FAULT CONDITIONS.....</b>	<b>8</b>
<b>2.1.</b>	<b>FRAME STATUS TALLY TERMINAL BLOCK.....</b>	<b>9</b>
<b>3.</b>	<b>INSTALLING AND REMOVING THE MODULES .....</b>	<b>9</b>
<b>3.1.</b>	<b>INSTALLING THE MODULE REAR PLATES .....</b>	<b>9</b>
<b>3.2.</b>	<b>OPENING AND CLOSING THE FRONT PANEL .....</b>	<b>10</b>
<b>3.3.</b>	<b>INSTALLING THE MODULES.....</b>	<b>10</b>
<b>3.4.</b>	<b>REMOVING THE MODULES.....</b>	<b>10</b>
<b>4.</b>	<b>CONNECTING THE FRAME GENLOCK REFERENCE.....</b>	<b>11</b>
<b>5.</b>	<b>SERVICING INSTRUCTIONS .....</b>	<b>12</b>
<b>5.1.</b>	<b>CHANGING THE FUSES.....</b>	<b>12</b>
5.1.1.	AC Powered Frames.....	12
5.1.2.	DC Powered Frames.....	12



5.2. REPLACING THE POWER SUPPLY ..... 12

Figures

Figure 1-1: AC Powered Frames Rear Panel ..... 5  
Figure 2: 7800FR-C-48VDC Rear Panel..... 6  
Figure 1-2: 7800PS Status Indicators ..... 8  
Figure 4-1: 7800FR and 7800FR-Q Rear Panel ..... 11  
Figure 5-1: Locating the Power Supply Mounting Screw on the 7800FR Frame ..... 13  
Figure 5-2: Locating the Power Supply Mounting Screw on the 7800FR-Q Frame **Error! Bookmark not defined.**

Tables

Table 1-1: Frame Versions ..... 1  
Table 2-1: Frame Status Tally Terminal Block Pin Assignments ..... 9

## REVISION HISTORY

<b><u>REVISION</u></b>	<b><u>DESCRIPTION</u></b>	<b><u>DATE</u></b>
1.0	First Release	Jul 08
1.1	Updated electrical specification	Oct 08
1.2	Added 7800FR-QT version	Aug 09
1.3	Added 7800FR-48VDC and 7800FR-ACDC version	Nov 09

Information contained in this manual is believed to be accurate and reliable. However, Evertz assumes no responsibility for the use thereof nor for the rights of third parties, which may be affected in any way by the use thereof. Any representations in this document concerning performance of Evertz products are for informational use only and are not warranties of future performance either express or implied. The only warranty offered by Evertz in relation to this product is the Evertz standard limited warranty, stated in the sales contract or order confirmation form.

Although every attempt has been made to accurately describe the features, installation and operation of this product in this manual, no warranty is granted nor liability assumed in relation to any errors or omissions unless specifically undertaken in the Evertz sales contract or order confirmation. Information contained in this manual is periodically updated and changes will be incorporated into subsequent editions. If you encounter an error, please notify Evertz Customer Service department. Evertz reserves the right, without notice or liability, to make changes in equipment design or specifications.

*This page left intentionally blank*

## 1. OVERVIEW

The 7800FR is a 3 rack unit high frame for the 7800 and 7700 series modular system. This advanced rack frame design can house up to 15 modules of any combination of the 7800 and 7700 series distribution, conversion, processing and synchronization modules. Special care was taken during the design process to ensure that the 7800FR meets the demanding needs of television studios today and has the sufficient flexibility to satisfy the emerging demands of the future.

The 7800FR is designed with a high density capacity to conserve on precious equipment rack space. Care has been taken to ensure sufficient thermal relief for up to 360 watts of processing power per frame, to meet the increasing power demands of future high speed processing cards.

Hot swappable redundant switching power supplies and cooling fans allow power supply or fan replacement without compromising the integrity of critical signal paths. The 7800FR is available with auto ranging 100-240 VAC power supplies.

The front loading design permits extraction of the power supplies and active modules from the front without compromising performance even at 3.0Gb/s. Thus, there is no need for time consuming re-cabling nor is there need to have access to the rear of the frame to replace or exchange modules.

The Frame is available in several different versions as stated below.

Model	Description
7800FR	360W AC powered frame – rear cooling.
7800FR-Q	360W AC powered frame – side cooling.
7800FR-QT	360W AC powered frame – rear cooling with fans on front door to increase air flow and reduce fan noise.
7800FR-48VDC	360W 48VDC powered frame – rear cooling.
7800FR-QT-48VDC	360W 48VDC powered frame – rear cooling with fans on front door to increase air flow and reduce fan noise.
7800FR-ACDC	360W AC and 48VDC powered frame – rear cooling.
7800FR-QT-ACDC	360W AC and 48VDC powered frame – rear cooling with fans on front door to increase air flow and reduce fan noise.

**Table 1-1: Frame Versions**

### Features:

- Houses up to 15 processing modules.
- Each slot has individually configurable inputs and outputs.
- Front monitoring window for verifying module and power supply status. (not on –QT versions)
- Frame status contact closure alarm signals power supply or fan failures and user selectable module alarms.
- Front extractable modules, power supplies and fans.
- AC versions have auto-ranging power supply that operates from 100-240VAC at 50/60 Hz.
- DC versions have auto-ranging power supply that operates from 36 to 60 VDC
- ACDC versions have one AC and one 48VDC power supply
- Power supply and frame cooling fans are fully redundant and hot-swappable.
- High-speed busing and control system provided for modular applications.
- Slot 1 may be used for 7700FC VistaLINK™ Frame Controller for SNMP control and monitoring.

- 360W power supplies and cooling to support 7700 and 7800 series modules drawing up to 24 watts per slot. Frame is compatible with all 7700 series modules.
- Two BNCs for connecting two separate genlock references for modules equipped to take a frame reference input.
- Standard version has rear exhaust from main cooling fans
- -Q versions have side exhaust from main cooling fans
- -QT versions have inlet fans on the front door (for improved cooling and reduced fan noise) and rear exhaust from main cooling fans.

## **1.1. SPECIFICATIONS**

### **1.1.1. Electrical – AC Powered Versions**

<b>AC Mains Input:</b>	Auto ranging, 100 ⇔ 240 VAC, 50/60 Hz
<b>Maximum Operating Current:</b>	4.6 A (@ 100 V/60Hz), 1.85A (@ 240 V/50Hz)
<b>Maximum Power Consumption:</b>	450 W
<b>Maximum Module Load:</b>	360 W (24 W per slot)
<b>Power Supply Configuration:</b>	Dual, redundant, separate inlets
<b>Connector:</b>	IEC 60320 - 1 per power supply
<b>Fuses:</b>	6.3 amps, 250 Volt ceramic time delay 5 x 20 mm. – 2 per power supply
<b>Status Indicators (each power supply):</b>	PSU status LED Local Error/Failure LED
<b>Tally Output Connector:</b>	4 pin terminal, relay N/O, N/C for status/fault alarm, 1A, 30 VDC max.
<b>Temperature:</b>	0 - 40°C

### **1.1.2. Electrical – DC Powered versions**

<b>DC Input:</b>	Auto ranging 36 ⇔ 60 VDC
<b>Maximum Operating Current:</b>	11 A (@ 48 VDC)
<b>Maximum Power Consumption:</b>	450 W
<b>Maximum Module Load:</b>	360 W (24 W per slot)
<b>Power Supply Configuration:</b>	Dual, redundant, separate inlets
<b>Connector:</b>	3 pin screw terminal strip – 1 per power supply
<b>Fuses:</b>	12 amps, 250 Volt time delay 5 x 20 mm. – 1 per power supply
<b>Status Indicators (each power supply):</b>	PSU status LED Local Error/Failure LED
<b>Tally Output Connector:</b>	4 pin terminal, relay N/O, N/C for status/fault alarm, 1A, 30 VDC max.
<b>Temperature:</b>	0 - 40°C

### **1.1.3. Compliance**

<b>Safety:</b>	CSA Listed to CSA C22.2 No. 60065-03, UL 60065-03 IEC 60065-(2001-12) 7th Edition Complies with CE Low voltage Directive 2006/95/EC
<b>EMC:</b>	Complies with FCC part 15, class A. Complies with EU EMC directive 2004/108/EC

#### 1.1.4. Physical

Height:	5.25" (133 mm)
Width:	19" (483 mm)
Depth:	
<b>Standard version:</b>	14.5" (368 mm)
<b>-Q version :</b>	14.5" (368 mm)
<b>-QT version:</b>	15.75" (400 mm)
Module Capacity:	15 slots
Weight:	Approx. 17.4 lbs. (7.9 Kg) with 2 power supplies, no slots occupied Approx. 32 lbs. (14.5 Kg) with 2 power supplies all slots occupied

#### 1.1.5. Cooling

<b>Standard version:</b>	Rear mounted main module cooling fans draw air in the front and exhaust at the rear. Power supply cooling fans draw air in the front and exhaust on each side of the frame
<b>-Q version:</b>	Rear mounted module cooling fans draw air in the front and exhaust at each side of the frame. Power supply cooling fans draw air in the front and exhaust on each side of the frame
<b>-QT version:</b>	Front door mounted inlet fans draw air Main module cooling uses front door inlet fans and rear exhaust fans for additional cooling and reduced fan noise. Power supply cooling fans exhaust on each side of the frame.

### 1.2. COOLING – STANDARD VERSION

The 7800FR frame is designed to ensure adequate cooling for up to 360 watts of processing power per frame. Fans at the front and rear of each power supply module accomplish forced air cooling. Adjacent equipment may be mounted immediately to the top and bottom of the 7800FR frame. Additional module cooling is provided by interior cooling channels to ensure that even fully loaded frames mounted vertically adjacent to each other will operate within the normal temperature range.



**For proper cooling, the frame must contain either two 7800PS power supplies, or one 7800PS power supply and one 7800PS-FM power supply blank panel with cooling fan.**

#### 1.2.1. Fan Exhaust

The cooling fans for the power supplies, located at the front of the frame, draw air in the front and exhaust out the sides of the frame. The cooling fans for the modules, located at the rear of the frame, draw air in the front and the exhaust out the rear of the frame.



**CAUTION: To ensure adequate cooling, care should be taken to ensure that the fan inlets and exhaust openings are free of obstructions.**

### **1.3. COOLING – Q VERSION**

The 7800FR-Q frame is designed to ensure adequate cooling for up to 360 watts of processing power per frame. Fans at the front and rear of each power supply module accomplish forced air cooling. Adjacent equipment may be mounted immediately to the top and bottom of the 7800FR frame. Additional module cooling is provided by interior cooling channels to ensure that even fully loaded frames mounted vertically adjacent to each other will operate within the normal temperature range.



**For proper cooling, the frame must contain either two 7800PS-Q power supplies, or one 7800PS-Q power supply and one 7800PS-Q-FM power supply blank panel with cooling fan.**

#### **1.3.1. Fan Exhaust**

The cooling fans for the power supplies, located at the front of the frame, draw air in the front and exhaust out the sides of the frame. The cooling fans for the modules, located at the sides of the frame, draw air in the front and the exhaust out the left and right sides of the frame.



**CAUTION: To ensure adequate cooling, care should be taken to ensure that the fan inlets and exhaust openings are free of obstructions.**

### **1.4. COOLING – QT VERSION**

The 7800FR frame is designed to ensure adequate cooling for up to 360 watts of processing power per frame. Fans at the front and rear of each power supply module accomplish forced air cooling. In addition there are 4 fans located on the frame door that draw cool air into the front of the main module area and push it over the modules providing additional cooling. When the door is closed, the rear fans operate at a reduced RPM, to reduce fan noise. When the door is opened, the rear fans operate at full RPM to ensure adequate cooling is maintained with the door open. Adjacent equipment may be mounted immediately to the top and bottom of the 7800FR frame. Additional module cooling is provided by interior cooling channels to ensure that even fully loaded frames mounted vertically adjacent to each other will operate within the normal temperature range.



**For proper cooling, the frame must contain either two 7800PS-QT power supplies, or one 7800PS-QT power supply and one 7800PS-QT-FM power supply blank panel with cooling fan.**

#### **1.4.1. Fan Exhaust**

The cooling fans for the power supplies, located at the front of the frame, draw air in the front and exhaust out the sides of the frame. The cooling fans for the modules, located at the rear of the frame, draw air in the front and the exhaust out the rear of the frame. Additional fans mounted on the front door draw cool air into the frame.





**CAUTION:** To ensure adequate cooling, care should be taken to ensure that the fan inlets and exhaust openings are free of obstructions.

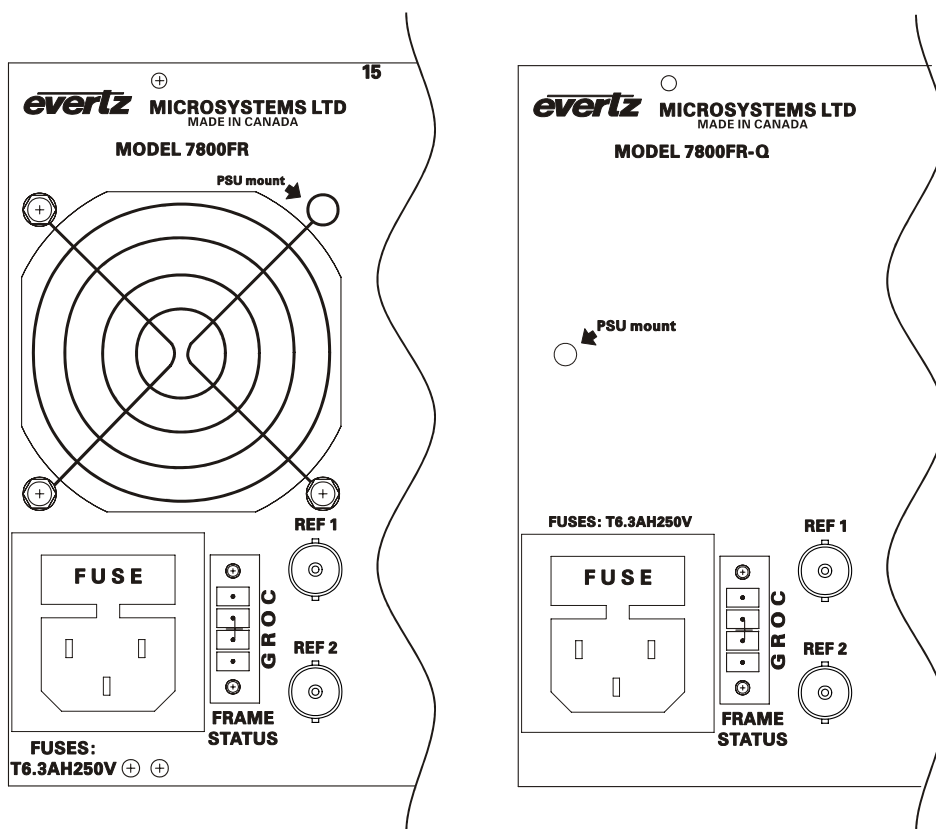
### 1.5. MOUNTING

The 7800FR Rack frame requires 3 rack units i.e. 5.25 inches (133 mm) of standard 19 inch (483 mm) wide rack space. To securely fasten the frame to the equipment rack, make sure that all four mounting screws are tightened securely.

When locating the frame within the rack, make sure that there is ample room at the rear so that the cables do not obstruct the fan exhausts. In addition, if you are installing the frame directly above other equipment, you need to ensure that the equipment does not protrude from the rack at the front, thus interfering with the 7800FR door opening. It is recommended that the 1RU space immediately below the frame does not protrude in front of the 7700FR to guarantee no interference. This is particularly important for the QT version.

### 1.6. POWER

#### 1.6.1. Connecting the Power - AC Powered Frames



**Figure 1-1: AC Powered Frames Rear Panel**

The frames come standard with one auto-ranging power supply that automatically senses the input voltage over the range of 100 to 240 VAC. An additional power supply can be ordered to provide fully redundant powering of the frame. When only one power supply is fitted, the frame will be fitted with the appropriate fan module (7800PS-FM, 7800PS-QT-FM or 7800PS-Q-FM) to ensure the thermal integrity of the frame cooling. Power should be applied by connecting a 3-wire grounding type power supply cord to the power entry module on the rear panel of each power supply. The power cord should be minimum 18 AWG wire size; type SVT marked VW-1, maximum 2.5 m in length.



**CAUTION - TO REDUCE THE RISK OF ELECTRIC SHOCK, GROUNDING OF THE GROUND PIN OF THE MAINS PLUG MUST BE MAINTAINED**

The power entry modules contain a standard IEC power inlet connector, two 5 x 20 mm fuse holders and an EMI line filter.

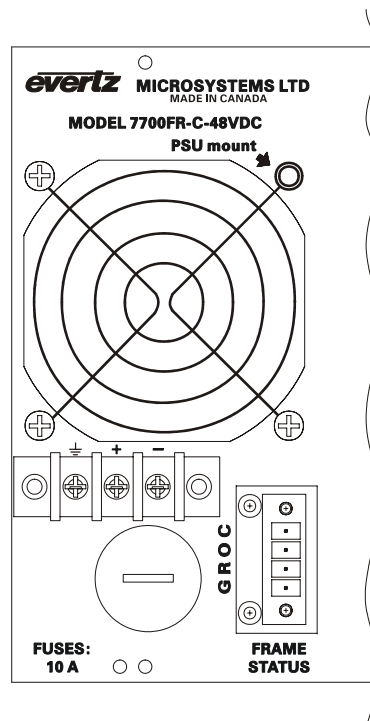
**Fuse Rating:** 6.3 amps, 250 Volt ceramic time delay

See section 5.1 for information on changing the fuses.



**If there is a fuse failure, contact Evertz customer service regarding the power supply immediately. The power supplies are short circuit protected and should not blow the fuse under a short circuit condition.**

### 1.6.2. Connecting the Power - DC Powered Frames



**Figure 2: 7800FR-C-48VDC Rear Panel**

The 7800FR- 48VDC frame comes standard with one auto-ranging power supply that automatically senses the input voltage over the range of 36 to 60 VDC. An additional power supply (7800PS-48VDC) can be ordered to provide fully redundant powering of the frame. When only one power supply is fitted, the frame will be fitted with a 7700PS-48VDC-FM fan module to ensure the thermal integrity of the frame cooling. Power should be applied by connecting a 2 conductor twisted pair shielded power supply cord to the screw terminals on the rear panel of each power supply. The power cord should be minimum 18 AWG wire size; maximum 2.5 m in length.

The frame rear panel is fitted with a three terminal wiring block, and a 5 x 20 mm fuse holder for each power supply.



**CAUTION - TO REDUCE THE RISK OF ELECTRIC SHOCK, GROUNDING OF THE GROUND PIN DC INPUT TERMINAL STRIP MUST BE MAINTAINED**

**Fuse Rating:** 12 amps, 250 Volt ceramic time delay

See section 5.1 for information on changing the fuses.



**If there is a fuse failure, contact Evertz customer service regarding the power supply immediately. The power supplies are short circuit protected and should not blow the fuse under a short circuit condition.**

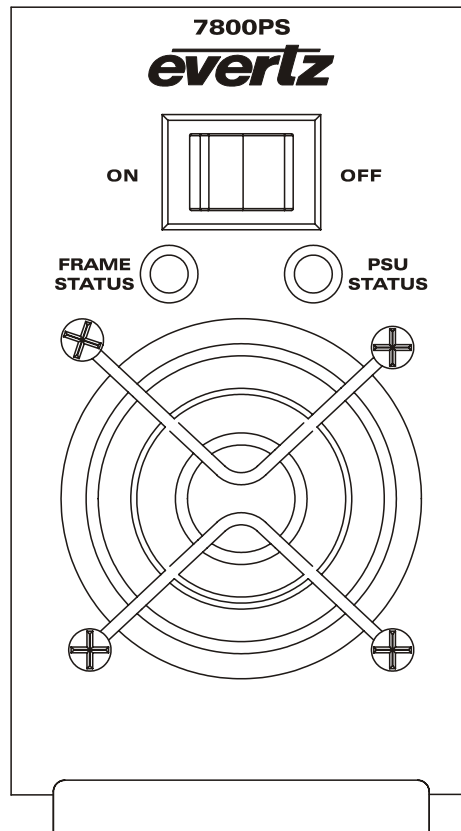
### **1.6.3. Connecting the Power - ACDC Powered Frames**

The 7800FR-ACDC frame comes standard with one auto-ranging power supply that automatically senses the input voltage over the range of 100 to 240 VAC and one auto-ranging DC power supply that automatically senses the input voltage over the range of 36 to 60 VDC. Follow the instructions for AC or DC powered frames for information on connecting the appropriate power.

### **1.6.4. Turning the Power On and Off**

Each power supply is fitted with its own power switch. When the switch is turned off, the remaining power supply will power the 7800FR frame. To completely remove power from the frame, both power supplies must be turned off.

### 1.6.5. Power Supply Status Indicators



**Figure 1-3: 7800PS Status Indicators**

Each power supply has two status indicator LEDs. The green PSU STATUS LED indicates the health of the local power supply and its fans. The green PSU STATUS LED will be On under normal conditions. The FRAME STATUS LED indicates the health of the entire frame and is operated by the frame status bus of the frame. The red FRAME STATUS LED will be Off under normal conditions and On when there are Frame Status Fault conditions. See section 2 for more information about frame status bus fault conditions.

If one of the power supplies malfunctions, (power cord disconnected, power switch is off, fuse is blown, rear fan is stopped, etc,) then its green PSU STATUS LED will go Off, and the red FRAME STATUS LED on both power supplies will turn On and the Frame Status fault will be signaled to the Frame status buss. (see section 2) The PSU STATUS LED on the power supply that is functioning will remain On. If the frame is connected to VistaLINK<sup>®</sup> then the power supply fault will send a trap message from the frame.

## 2. FRAME STATUS FAULT CONDITIONS

The Frame is fitted with a global Frame Status monitoring bus that is connected to each of the power supplies and to each of the modules. When a fault condition occurs on one of the power supplies, or one of the modules, a Frame Status Fault condition is active on the frame status bus. When this occurs the red FRAME STATUS LED on the power supply will come on and the relay on the Frame Status Tally terminal block will activate. Power supplies, will assert a frame status fault when their PSU STATUS LED is off.

Each module has a large red LOCAL FAULT LED and a large green MODULE OK LED at the top of the card edge. This green LED indicates good module health while the red LED indicates that there is a fault condition on the module. Each module has its own criteria that determines when the red fault LED comes on. When the red LOCAL FAULT LED is On the module can also assert a fault condition on the Frame Status bus. On each module there is a jumper that disables sending local card fault information to the Frame Status Bus. For more information about fault conditions on individual modules, and for the location of the Frame Status Jumper on the module consult the individual chapter for the module. For example, if a module requires video or audio for its functionality and the video or audio is not present, the red LOCAL FAULT LED on the module will be On and the fault will be reported on the frame status bus if the FRAME STATUS jumper on the module is set to the On position (default).

## 2.1. FRAME STATUS TALLY TERMINAL BLOCK

There is a terminal block at the rear of the frame that has a normally open and normally closed relay contact that can be used to indicate frame status fault conditions to external equipment. There are 4 connections.

Label	Pin #	Function
G	1	Chassis Ground (connect to cable shield)
R	2	Common (connect to Ground or your reference)
O	3	Open with respect to common when Frame Status fault exists
C	4	Closed with respect to common when Frame Status fault exists

**Table 2-1: Frame Status Tally Terminal Block Pin Assignments**



The frame status GROC connector on the 7800FR series frames are a different type than used on the older 7700 series frames to make room for the new reference BNCs.

The relay contacts can sink up to 1A and operate up to 30 VDC.

## 3. INSTALLING AND REMOVING THE MODULES

### 3.1. INSTALLING THE MODULE REAR PLATES

Each module is shipped with a matching rear panel plate which houses the connectors appropriate for the module. When installing a rear plate, locate the desired slot position where you wish to install the rear plate. Make a note of the slot number where you are installing the rear plate. Orient the plate so that the labeling is visible when the plate is installed. Loosely fasten the plate to the extrusions using the mounting screws provided, beginning with the top screw. You will tighten the screws after the main module is installed.

### **3.2. OPENING AND CLOSING THE FRONT PANEL**

In order to insert or remove modules you will have to open the front panel. Turn the two captive screws located on the front panel counter clockwise several turns until they release completely from the front extrusions. Carefully lower the front panel door so that the front edge of the door is lower than the rear of the door.

On – QT version frames, the fans on the front door will stop when the door is opened, and the rear fans will increase to full speed.



**Exercise care when opening the door on QT version frames so as to not contact the fan blades while they are turning. This may cause personal injury and may also damage the fans.**

When closing the door, make sure that the thumbscrews are properly finger tightened. If the frame is operated in environments subject to excessive vibration such as mobile trucks, you may tighten the screws carefully with a screwdriver. Be careful not to over tighten as the thumbscrew head may twist off.

On – QT version frames, the front door fans will resume operation when the door is closed, and the rear fans will operate at reduced speed.

### **3.3. INSTALLING THE MODULES**

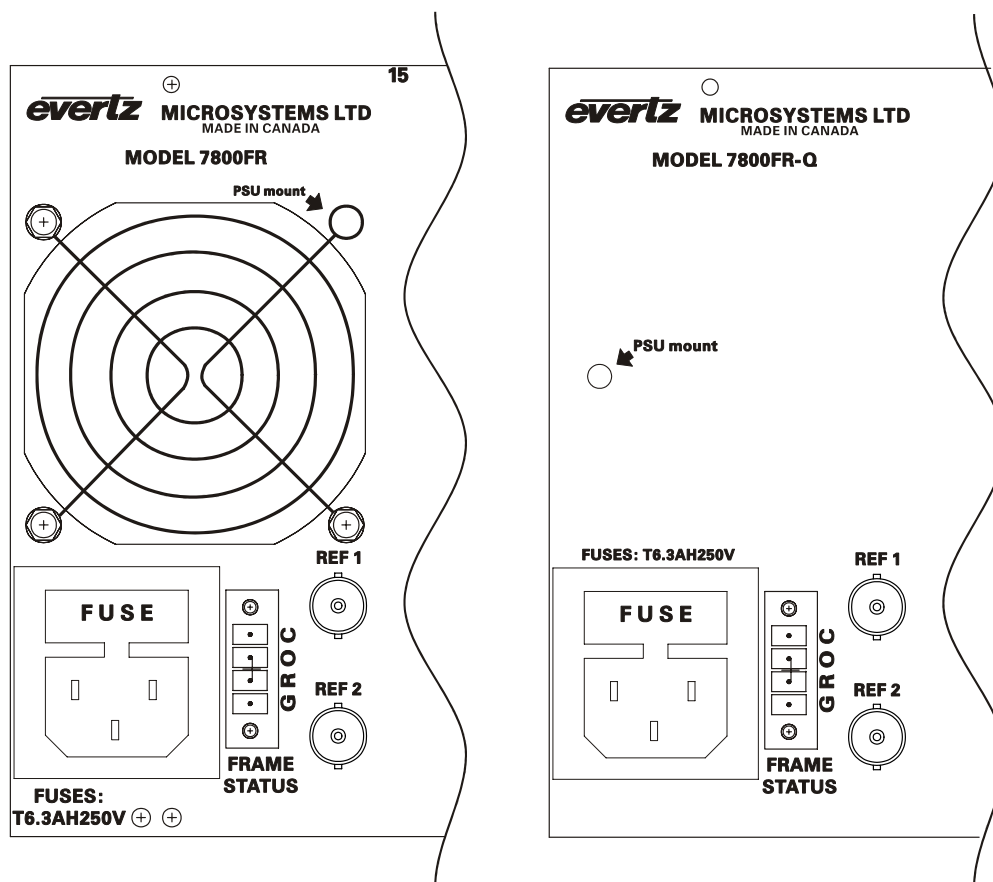
Orient the module vertically such that the white card ejector is on the bottom. Align the card with the card guide corresponding to the slot number where you installed the rear panel plate. Carefully slide the module into the frame and press it completely into the rear panel connectors. Make sure that the connectors are fully seated in the rear panel. When this is done, close the front panel and then tighten the screws that hold the rear panel in place.

### **3.4. REMOVING THE MODULES**

Press the card ejector down to release the module. Grasp the card using the card ejector and pull the module out from the frame. As the card ejector goes past the front extrusion, you will have to pull it with slightly more force. Carefully place the module in a safe place, free from static discharge.

## 4. CONNECTING THE FRAME GENLOCK REFERENCE

The 7800FR and 7800FR-Q frame versions have two input BNCs that can be used to deliver reference signals to cards that are housed in the frame. These are labeled **REF 1** and **REF 2** and are located on the rear of the frame in the bottom, left hand side (as facing the rear of the frame) near the GROC connector. See Figure 4-1.



**Figure 4-1: 7800FR and 7800FR-Q Rear Panel**

The **REF 1** and **REF 2** inputs provide an analog connection to the modules in the frame and can carry a wide variety of signals depending on the modules inserted into the frame. For example, NTSC, PAL-B, Tri-level sync, bi-level sync, DARS, etc. is supported. Each card that supports a Frame reference will have a control for selecting which of the references to use. See the specific module chapter for information on the reference input operation and control. Because there are two frame reference inputs, you can supply the frame with two completely different signals or two different time bases of the same type of signal. It is up to the system designer/installer/operator to supply appropriate signals and configure modules to use the correct reference input.

Both reference inputs are isolated from the frame and provide a balanced analog signal connection along the module interconnect printed circuit board to all modules. The balanced signal is terminated at the far end of the module interconnect bus with a 75 Ohm termination. Each installed module that supports the use of these reference inputs will slightly degrade the return loss of the frame reference inputs (approx. 1dB per card). For this reason, it is important that the reference input signal comes directly from a dedicated distribution source like a distribution amplifier without passing through any reference loops or high impedance "T" connections.

## 5. SERVICING INSTRUCTIONS



**CAUTION** – These servicing instructions are for use by qualified service personnel only. To reduce risk of electric shock do not perform any servicing instructions in this section of the manual unless you are qualified to do so.

### 5.1. CHANGING THE FUSES



**Check that the line fuse is rated for the correct value marked on the rear panel. Never replace with a fuse of greater value.**

#### 5.1.1. AC Powered Frames

The fuse holder is located inside the power entry module. To change the fuses, pull out the fuse holder from the power entry module using a small screwdriver. The fuse holder contains two fuses, one for the line and one for the neutral side of the mains connection. Pull out the blown fuse and place a fuse of the correct value in its place. The correct fuse rating is marked on the rear panel near the power entry module.

**Fuse Rating:** 6.3 amps, 250 Volt ceramic time delay, 5 x 20 mm

For your convenience there are spare fuses located in the vinyl pouch in the front of this manual. Carefully reinsert the fuse holder into the power entry module.

#### 5.1.2. DC Powered Frames

The fuse holder is located near the terminal strip. To change the fuses, remove power from the frame. Insert a flat blade screwdriver in the fuse holder and turn to clockwise. Pull out the fuse from the fuse holder using a small screwdriver. Remove the blown fuse and replace with a fuse of the correct value. The correct fuse rating is marked on the rear panel. Carefully reinsert the fuse into the fuse holder. Tighten by turning the fuse holder counter clockwise.

**Fuse Rating:** 12 amps, 250 Volt ceramic time delay, 5 x 20 mm

For your convenience there are spare fuses located in the vinyl pouch in the front of this manual.

### 5.2. REPLACING THE POWER SUPPLY

Each power supply is a complete assembly and includes the power supply cooling fan and one frame cooling fan. In the event that the power supply or one of the fans malfunction, you will need to replace the power supply assembly with a spare one while the failed assembly is being repaired.





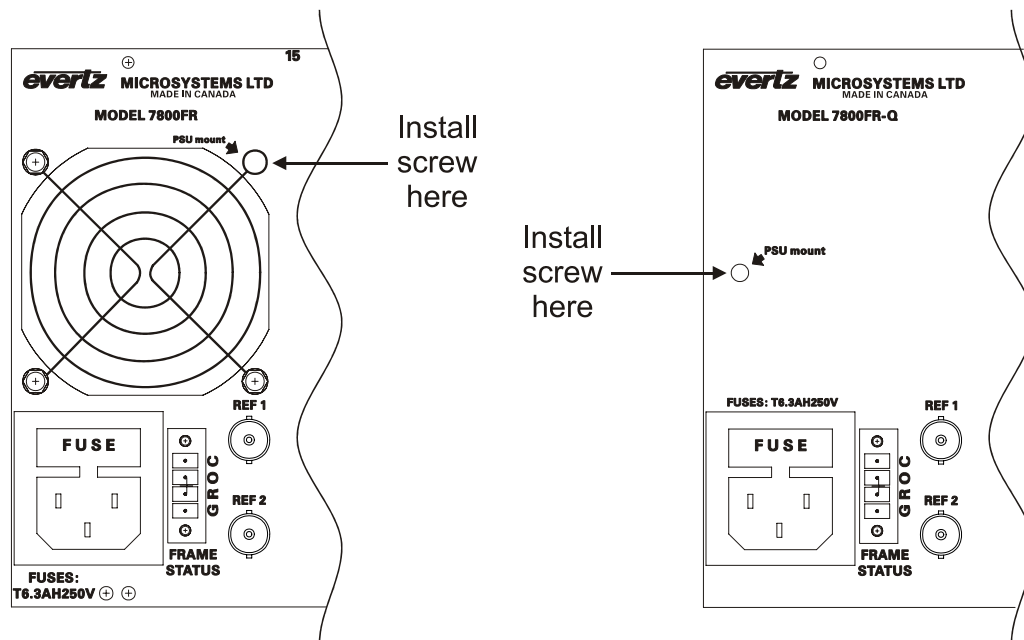
**Do not run the frame for extended periods of time with one of the power supplies removed or with the door open. Proper cooling of the frame requires both power supplies to be inserted into the frame, or one power supply and a power supply fan module.**

The 7800FR power supplies are hot swappable and can be easily replaced from the front without interrupting the signal integrity of the frame. Each power supply is capable of supplying full power to the frame by itself, however we recommend running with both supplies powered for power redundancy. On frames with only one power supply, a blank power supply fan module with cooling fan (properly rated for the wattage of the power supply) **must be** inserted into the second power supply space. The blank power supply fan module contains a module cooling fan sufficient to cool the maximum power dissipation of the frame and baffles to maintain proper airflow within the frame.

The power supply is secured into the frame by a machine screw through the rear panel (as shown in Figure 5-1). This screw must be removed before the power supply can be extracted from the front.



**To reduce risk of electric shock you must replace the mounting screw after replacing the power supply.**



**Figure 5-1: Locating the Power Supply Mounting Screw**

---

To replace the power supply the following procedure should be used.

1. Turn off the power supply switch.
2. From the rear of the frame locate the power supply mounting screw. This screw is the top right screw holding the fan guard in place, and is indicated by the legend

PSU  
mount ↓

3. Remove the power supply mounting screw.
4. Open the front door of the frame and pull the power supply out of the frame.
5. Reinsert the new power supply into the frame taking care that it is properly aligned with the card guides. Press firmly to make sure that the power supply is fully seated into the rear panel connector.
6. Reinstall the power supply mounting screw from the rear of the frame.
7. Turn on the power switch for the power supply. After a few seconds you should see the PSU STATUS LED come on indicating that the power supply is working correctly.

This page left intentionally blank