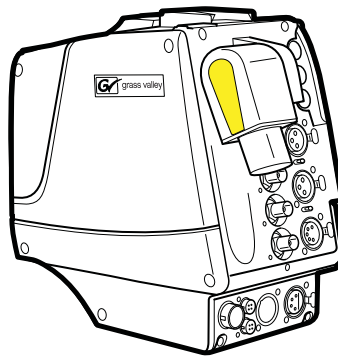


# Maintenance Manual

3922 496 32261 March 2019 v5.0



## XF Universe Adapter (+LDX5660)

XF Transmission Adapter



---

## Declaration of Conformity

We, Grass Valley Nederland B.V., Bergschot 69, 4817 PA Breda, The Netherlands, declare under our sole responsibility that these products are in compliance with the following standards:

- EN62368-1:2014 + AC:2015 — Safety
- EN55032:2012 + C2:2013 — EMC (Emission)
- EN55103-2:2009 — EMC (Immunity)

following the provisions of:

- a. the Low Voltage directive 2014/35/EU
- b. the EMC directive 2014/30/EU
- c. the RoHS directive 2011/65/EU

## FCC CLASS A Statement

This product generates, uses, and can radiate radio frequency energy and if not installed and used in accordance with the instructions, may cause interference to radio communications.

It has been tested and found to comply with the limits for a CLASS A digital device pursuant to part 15 of the FCC rules, which are designed to provide reasonable protection against such interference when operated in a commercial environment.

Operation of this product in a residential area is likely to cause interference in which case the user at his own expense will be required to take whatever measures may be required to correct the interference.

## Copyright

Copyright Grass Valley Canada 2019. Copying of this document and giving it to others, and the use or communication of the contents thereof, are forbidden without express authority. Offenders are liable to the payment of damages. All rights are reserved in the event of the grant of a patent or the registration of a utility model or design. Liable to technical alterations in the course of further development.

## Trademarks

Grass Valley, LDX Series and derivatives are trademarks or registered trademarks of Grass Valley Canada. Belden Inc., Grass Valley Canada and other parties may also have trademark rights in other terms used herein.

---

---

## Recycling

Visit [www.grassvalley.com](http://www.grassvalley.com) for recycling information.

## Packing for return

If a unit is being returned to Grass Valley for servicing, try to use the containers and materials of the original packaging. Attach a tag indicating the type of service required, return address, model number, full serial number and the return number which will be supplied by your Grass Valley service centre. If the original packing is not available or can no longer be used contact your regional Grass Valley service representative to have a return package provided.

---

# Important information

This information is intended as a guide for trained and qualified personnel who are aware of the dangers involved in handling potentially hazardous electrical / electronic equipment. It is not intended to contain a complete list of all safety precautions which should be observed by personnel in using this or other electronic equipment.

The installation, maintenance and service of this equipment involves risks both to personnel and equipment and must be performed only by qualified personnel exercising due care.

Personnel engaged in the installation, operation, maintenance or servicing of this equipment are urged to become familiar with First Aid theory and practises.

During installation and operation of this equipment, local building safety and fire protection standards must be observed.

Whenever it is likely that safe operation is impaired, the apparatus must be made inoperative and secured against any unintended operation. The appropriate servicing authority must then be informed. For example, safety is likely to be impaired if the apparatus fails to perform intended function or shows visible damage.

## Warnings and Cautions

When performing service, be sure to read and comply with the warning and caution notices appearing in the manuals. Warnings indicate danger that requires correct procedures or practices to prevent death or injury to personnel. Cautions indicate procedures or practices that should be followed to prevent damage or destruction to equipment or property.

### Warnings

- THE CURRENTS AND VOLTAGES PRESENT IN THIS EQUIPMENT ARE DANGEROUS. ALL PERSONNEL MUST AT ALL TIMES FOLLOW THE SAFETY REGULATIONS.
- ALWAYS DISCONNECT POWER BEFORE REMOVING COVERS OR PANELS.
- ALWAYS DISCHARGE HIGH VOLTAGE POINTS BEFORE SERVICING.
- NEVER MAKE INTERNAL ADJUSTMENTS, PERFORM MAINTENANCE OR SERVICE WHEN ALONE OR WHEN FATIGUED.
- IN CASE OF AN EMERGENCY ENSURE THAT THE POWER IS DISCONNECTED.
- ANY INTERRUPTION OF THE PROTECTION CONDUCTOR INSIDE OR OUTSIDE THE APPARATUS, OR DISCONNECTION OF THE PROTECTIVE EARTH TERMINAL, IS LIKELY TO MAKE THE APPARATUS DANGEROUS. INTENTIONAL INTERRUPTION IS PROHIBITED.

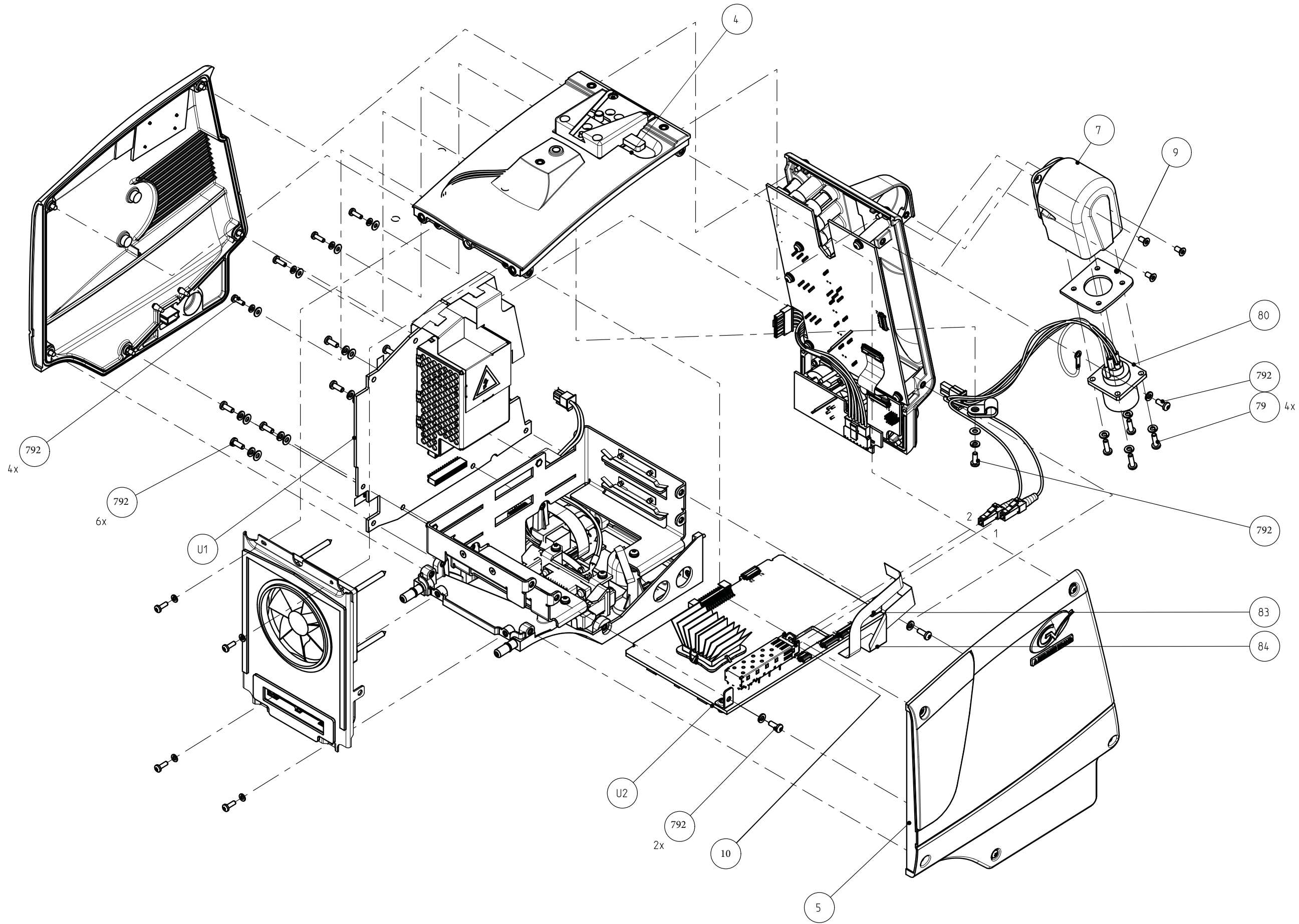
### Cautions


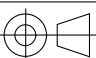
- To prevent risk of overheating, ventilate the product correctly.
-

**0031 226 00200 - XF UNIVERSE ADAPTER LEMO HYBRID FIBER**

List of Field Replacable Units (FRUs):

<b>Pos</b>	<b>Part Number</b>	<b>Description</b>
4	3922 407 63441	ADAPTER TOP PLATE ASSY
7	500-00032-01	ROTARY CONN UNIT ASSY
9	3922 404 42871	FIBER CONNECTOR FILL PLATE
10	120-00001-01	LSR DIG SFP+ 1310nm EOLP-1396-20-I
80	3922 407 52434	LEMO CAMERA ASSEMBLY
83	3922 411 56841	PCB F--- 20P FLEX ANGLED CABLE
84	2422 015 18546	CLB FLEX 30P FFC 0.5 SUMICARD TL=81MM 30V
792	326-00006-01	COMBI SCR PAN STL ST M3X8
793	326-00007-01	COMBI SCR PAN STL ST M3X10
U1	3922 406 56901	PCBA POWER BOARD
U2	3922 406 57221	PCBA FIBER TRANSMISSION 10G ADAPTER



		DOCUMENT NUMBER:	SHEET:043-01	I	ES	
					ES	
				E. SCHMIT		
DESCRIPTION:	XF UNIVERSE ADAPTER LEMO HYBRID FIBER					
GENERAL ROUGHNESS Ra 3.2 um	IF TOLERANCE AND TOLERANCE TABLE ARE ABSENT THEN APPLY DIM ±0.2 ANGLE ±1°	UNIT:		SCALE:		SHEET:

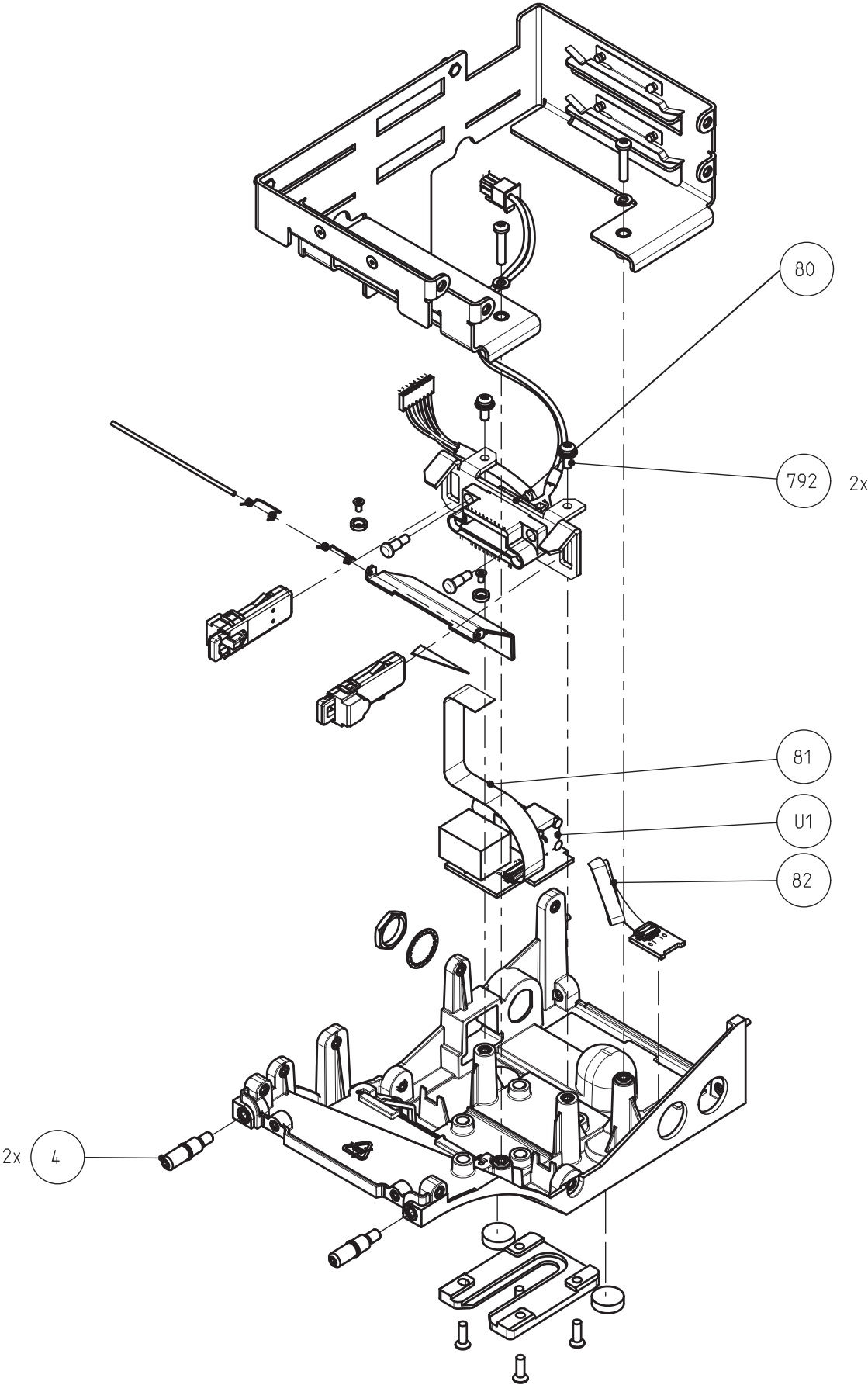
THIS DOCUMENT IS THE PROPERTY OF GRASS VALLEY  
IT SHALL NOT BE REPRODUCED NOR TRANSMITTED TO A THIRD PARTY WITHOUT PRIOR WRITTEN  
CONSENT OF THE COMPANY

**3922 407 63381 - ADAPTER BOTTOM PLATE ASSY**

List of Field Replacable Units (FRUs):

<b>Pos</b>	<b>Part Number</b>	<b>Description</b>
4	3922 404 43514	DOCKING PIN
80	3922 407 63611	HOT SHOE CABLE ASSY
81	3922 411 56992	PCB F--- 20P FLEX CABLE
82	2422 015 19425	CLB FLEX 10P FFC 0.5 SUMICARD TL=138MM 30V
792	326-00006-01	COMBI SCR PAN STL ST M3X8
U1	3922 406 56891	PCBA RIGHT CONNECTOR BRD





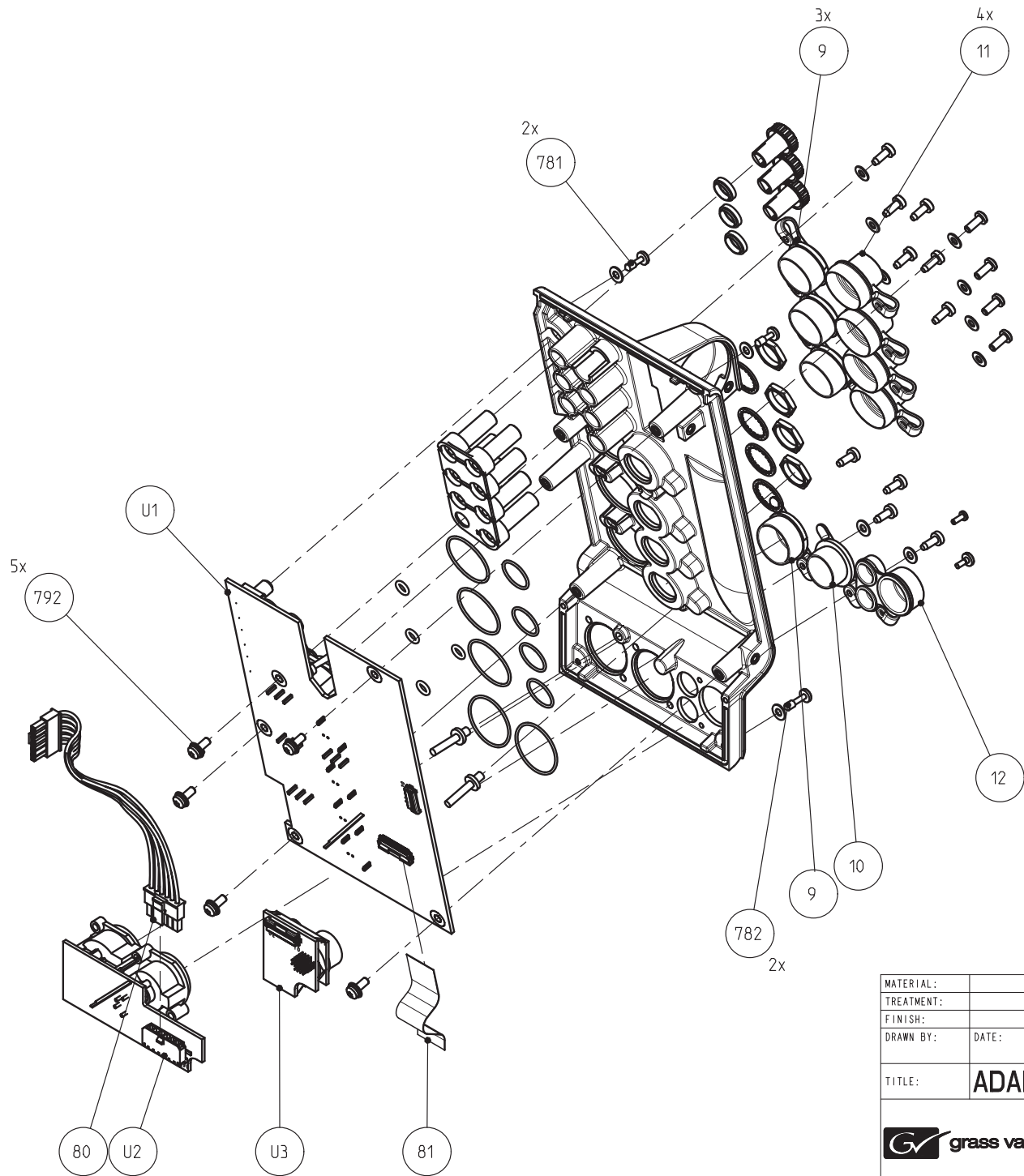
MATERIAL:				SCALE	
TREATMENT:					
FINISH:					
DRAWN BY:		DATE:	GENERAL ROUGHNESS: Ra 3.2 n um	TOLERANCES UNLESS OTHERWISE STATED: DIMENSION: ±0,2    ANGLE: ±1°	UNIT
TITLE:		ADAPTER BOTTOM PLATE ASSY			
		DOCUMENT NUMBER		FORMAT	SHEET
		RELEASE LEVEL:			



### **3922 407 63411 - ADAPTER BACK PANEL ASSY**

List of Field Replacable Units (FRUs):

<b>Pos</b>	<b>Part Number</b>	<b>Description</b>
9	3922 400 11992	XLR FEM CAP
10	3922 400 12002	XLR MALE CAP
11	3922 400 11973	BNC CAP
12	3922 400 12012	AUX CAP
80	3922 407 63591	6P POWER CABLE ASSY
81	3922 205 00006	CLB FLEX 30P FFC 0.5 SUMICARD TL=56MM 30V
781	2522 200 03024	PAN CAP SCR STL.ST M3x10
782	2522 200 03025	PAN CAP SCR STL.ST M3x12
792	326-00006-01	COMBI SCR PAN STL ST M3X8
U1	3922 406 56911	PCBA BACKPANEL AUDIO
U2	3922 406 56871	PCBA POWER CONNECTOR BRD
U3	3922 406 56881	PCBA AUX CONNECTOR BRD

THIS DOCUMENT IS THE PROPERTY OF GRASS VALLEY  
IT SHALL NOT BE REPRODUCED NOR TRANSMITTED TO A THIRD PARTY WITHOUT PRIOR WRITTEN  
CONSENT OF THE COMPANY



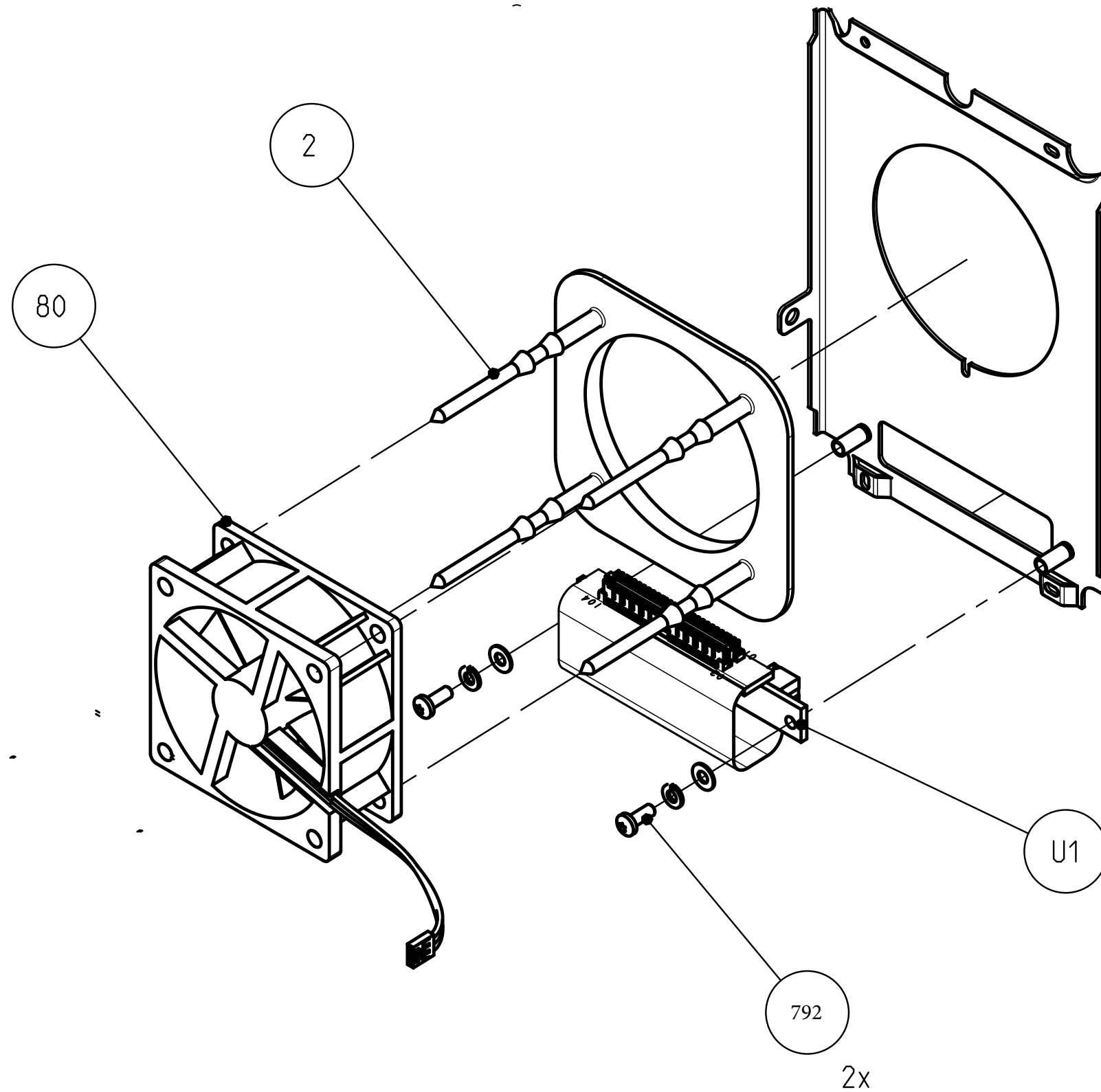
MATERIAL:						SCALE	
TREATMENT:							
FINISH:							UNIT
DRAWN BY:	DATE:	GENERAL ROUGHNESS:	TOLERANCES UNLESS OTHERWISE STATED:				
		Ra 3.2 n um	DIMENSION:±	ANGLE: ±°			
TITLE:		ADAPTER BACK PANEL ASSY					
 grass valley		DOCUMENT NUMBER			FORMAT	SHEET	
		RELEASE LEVEL: ...					

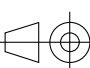

**3922 407 63541 ADAPTER DOCK PLATE ASSY**

List of Field Replacable Units (FRUs):

<b>Pos</b>	<b>Part Number</b>	<b>Description</b>
2	3922 400 11134	FANMOUNTING DAMPER
80	3922 407 57891	FAN ASSY HDDT ADAPTOR
792	326-00006-01	COMBI SCR PAN STL ST M3X8
U1	3922 406 56851	SAMTEC FLEX

THIS DOCUMENT IS THE PROPERTY OF GRASS VALLEY  
IT SHALL NOT BE REPRODUCED NOR TRANSMITTED TO A THIRD PARTY WITHOUT PRIOR WRITTEN  
CONSENT OF THE COMPANY



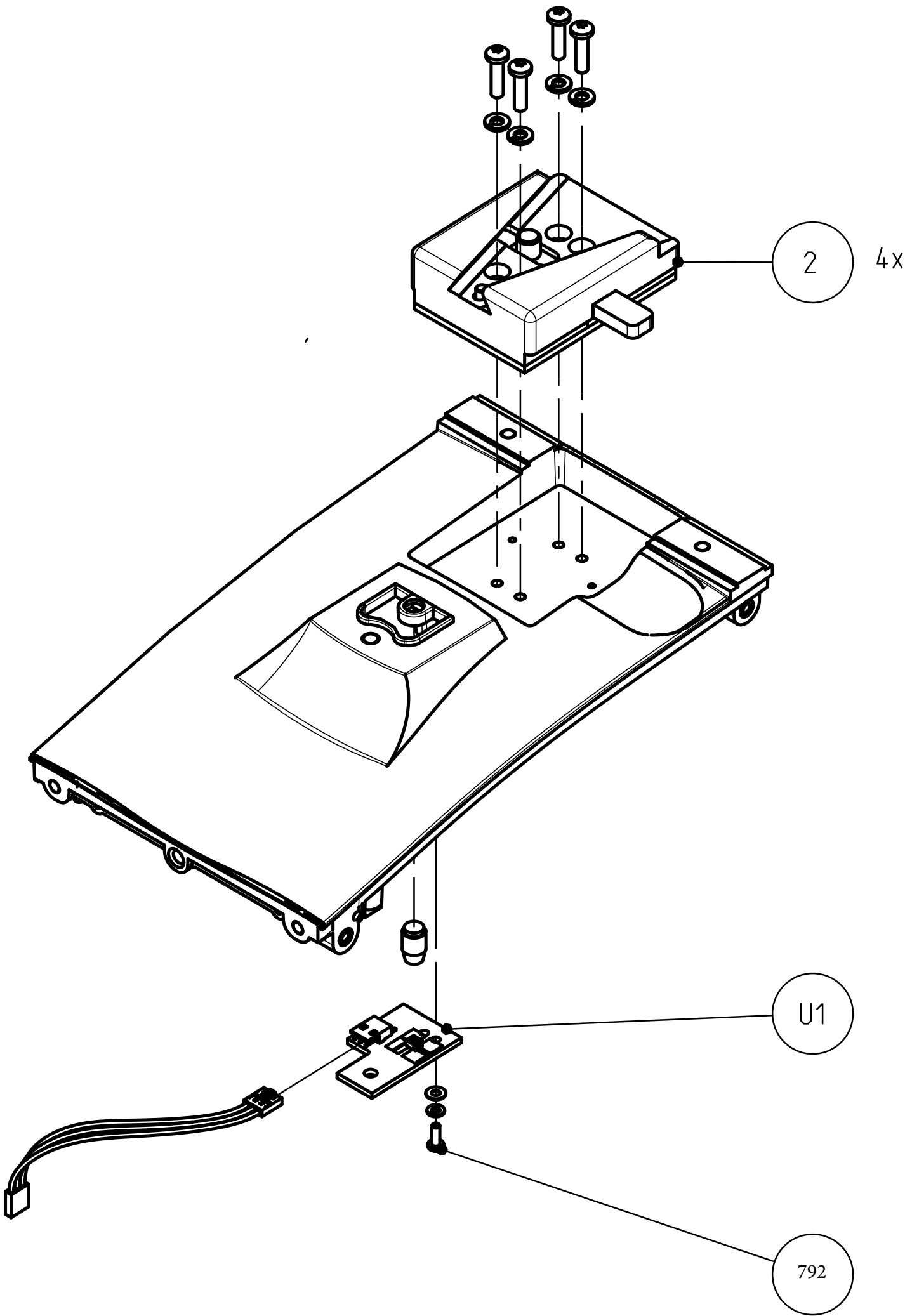
MATERIAL:							SCALE
TREATMENT:							
FINISH:							
DRAWN BY:	DATE:	GENERAL ROUGHNESS:	TOLERANCES UNLESS OTHERWISE STATED:			UNIT	
		Ra 3.2 n um	DIMENSION:±0,2	ANGLE:	±1°		
TITLE:		ADAPTER DOCK PLATE ASSY					
 grass valley		DOCUMENT NUMBER			FORMAT	SHEET	
		RELEASE LEVEL:				.	

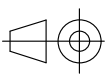

### **3922 407 63441 - ADAPTER TOP PLATE ASSY (FRU)**

List of Field Replacable Units (FRUs):

<b>Pos</b>	<b>Part Number</b>	<b>Description</b>
2	3922 407 63811	QUICK MOUNT BLOCK ASSY
792	326-00006-01	COMBI SCR PAN STL ST M3X8
U1	3922 406 56861	TALLY LIGHT BRD

Complete Adapter Top Plate Assy (3922 407 63441) is also available as FRU!



MATERIAL:						SCALE	
TREATMENT:							
FINISH:							
DRAWN BY:	DATE:	GENERAL ROUGHNESS:	TOLERANCES UNLESS OTHERWISE STATED:			UNIT	
		Ra 3.2 n um	DIMENSION:±0,2	ANGLE: ±1°			
TITLE:		ADAPTER TOP PLATE ASSY					
		DOCUMENT NUMBER			FORMAT		SHEET
		RELEASE LEVEL:					

**3922 407 63471 - ADAPTER COVER LEFT ASSY**

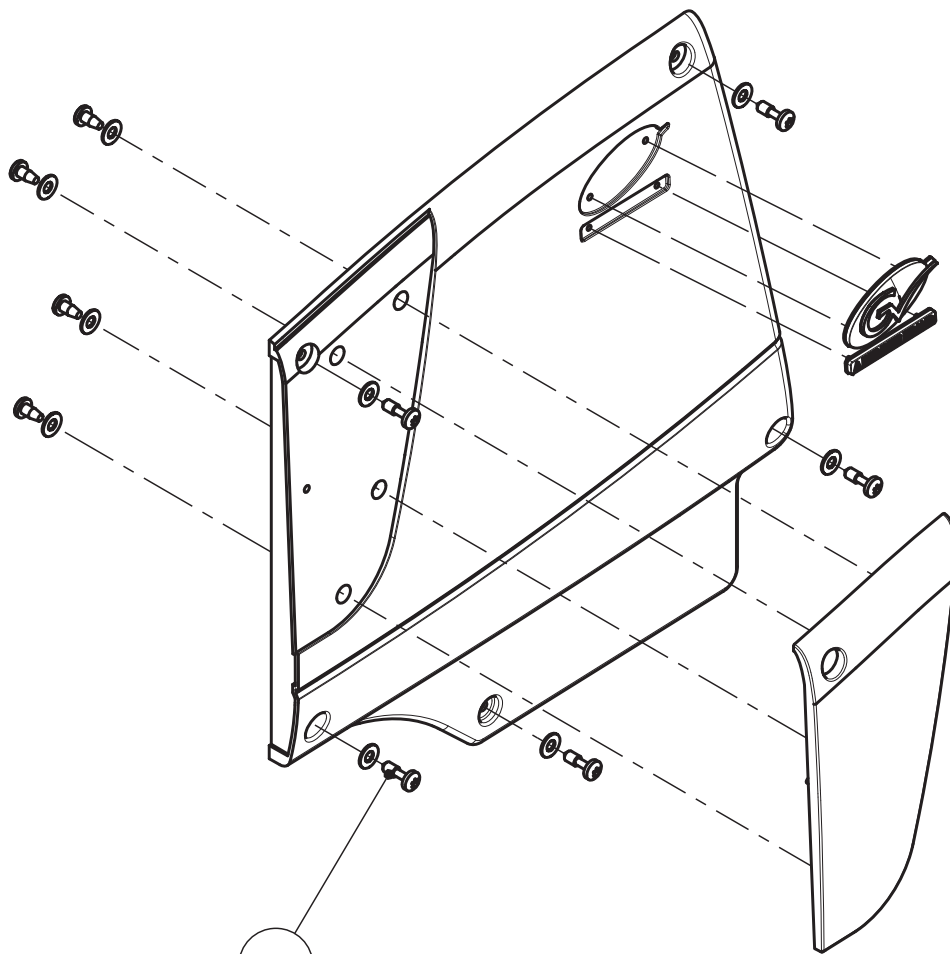
**3922 407 63501 - ADAPTER COVER RIGHT ASSY**

List of Field Replacable Units (FRUs):

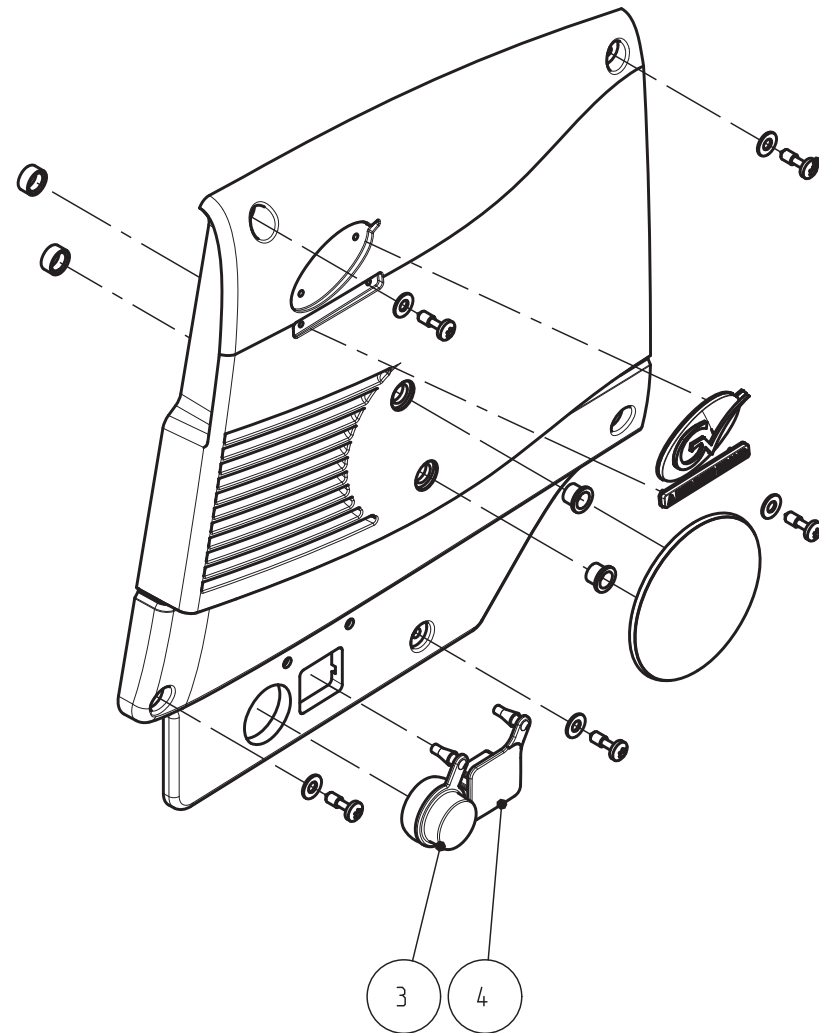
<b>Pos</b>	<b>Part Number</b>	<b>Description</b>
3	516-00001-02	BNC CAP
4	3922 400 11982	RJ45 CAP
781	2522 200 03024	PAN CAP SCR STL.ST M3x10



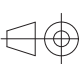

THIS DOCUMENT IS THE PROPERTY OF GRASS VALLEY  
IT SHALL NOT BE REPRODUCED NOR TRANSMITTED TO A THIRD PARTY WITHOUT PRIOR WRITTEN  
CONSENT OF THE COMPANY



781  
5x



781  
5x

MATERIAL:						SCALE
TREATMENT:						
FINISH:						
DRAWN BY:	DATE:	GENERAL ROUGHNESS:	TOLERANCES UNLESS OTHERWISE STATED:			UNIT
		Ra 3.2 n um	DIMENSION:±0,2	ANGLE: ±1°		
TITLE:		ADAPTER COVER LEFT-RIGHT ASSY				
		DOCUMENT NUMBER			FORMAT	SHEET
		RELEASE LEVEL:				