

# Maintenance Manual

13-00089-000 January 2020 v1.0



## CGP500

Creative Grading Panel



---

## Declaration of Conformity

We, Grass Valley Nederland B.V., Bergschot 69, 4817 PA Breda, The Netherlands, declare under our sole responsibility that these products are in compliance with the following standards:

- EN62368-1:2014 + AC:2015 — Safety
- EN55032:2012 + C2:2013 — EMC (Emission)
- EN55103-2:2009 — EMC (Immunity)

following the provisions of:

- a. the Low Voltage directive 2014/35/EU
- b. the EMC directive 2014/30/EU
- c. the RoHS directive 2011/65/EU

## FCC CLASS A Statement

This product generates, uses, and can radiate radio frequency energy and if not installed and used in accordance with the instructions, may cause interference to radio communications.

It has been tested and found to comply with the limits for a CLASS A digital device pursuant to part 15 of the FCC rules, which are designed to provide reasonable protection against such interference when operated in a commercial environment.

Operation of this product in a residential area is likely to cause interference in which case the user at his own expense will be required to take whatever measures may be required to correct the interference.

## Copyright

Copyright Grass Valley Canada 2019. Copying of this document and giving it to others, and the use or communication of the contents thereof, are forbidden without express authority. Offenders are liable to the payment of damages. All rights are reserved in the event of the grant of a patent or the registration of a utility model or design. Liable to technical alterations in the course of further development.

## Trademarks

Grass Valley, LDX Series and derivatives are trademarks or registered trademarks of Grass Valley Canada. Belden Inc., Grass Valley Canada and other parties may also have trademark rights in other terms used herein.

---

---

## Recycling

Visit [www.grassvalley.com](http://www.grassvalley.com) for recycling information.

## Packing for return

If a unit is being returned to Grass Valley for servicing, try to use the containers and materials of the original packaging. Attach a tag indicating the type of service required, return address, model number, full serial number and the return number which will be supplied by your Grass Valley service centre. If the original packing is not available or can no longer be used contact your regional Grass Valley service representative to have a return package provided.

---

# Important information

This information is intended as a guide for trained and qualified personnel who are aware of the dangers involved in handling potentially hazardous electrical / electronic equipment. It is not intended to contain a complete list of all safety precautions which should be observed by personnel in using this or other electronic equipment.

The installation, maintenance and service of this equipment involves risks both to personnel and equipment and must be performed only by qualified personnel exercising due care.

Personnel engaged in the installation, operation, maintenance or servicing of this equipment are urged to become familiar with First Aid theory and practises.

During installation and operation of this equipment, local building safety and fire protection standards must be observed.

Whenever it is likely that safe operation is impaired, the apparatus must be made inoperative and secured against any unintended operation. The appropriate servicing authority must then be informed. For example, safety is likely to be impaired if the apparatus fails to perform intended function or shows visible damage.

## Warnings and Cautions

When performing service, be sure to read and comply with the warning and caution notices appearing in the manuals. Warnings indicate danger that requires correct procedures or practices to prevent death or injury to personnel. Cautions indicate procedures or practices that should be followed to prevent damage or destruction to equipment or property.

### Warnings

- THE CURRENTS AND VOLTAGES PRESENT IN THIS EQUIPMENT ARE DANGEROUS. ALL PERSONNEL MUST AT ALL TIMES FOLLOW THE SAFETY REGULATIONS.
- ALWAYS DISCONNECT POWER BEFORE REMOVING COVERS OR PANELS.
- ALWAYS DISCHARGE HIGH VOLTAGE POINTS BEFORE SERVICING.
- NEVER MAKE INTERNAL ADJUSTMENTS, PERFORM MAINTENANCE OR SERVICE WHEN ALONE OR WHEN FATIGUED.
- IN CASE OF AN EMERGENCY ENSURE THAT THE POWER IS DISCONNECTED.
- ANY INTERRUPTION OF THE PROTECTION CONDUCTOR INSIDE OR OUTSIDE THE APPARATUS, OR DISCONNECTION OF THE PROTECTIVE EARTH TERMINAL, IS LIKELY TO MAKE THE APPARATUS DANGEROUS. INTENTIONAL INTERRUPTION IS PROHIBITED.

### Cautions

- To prevent risk of overheating, ventilate the product correctly.
-

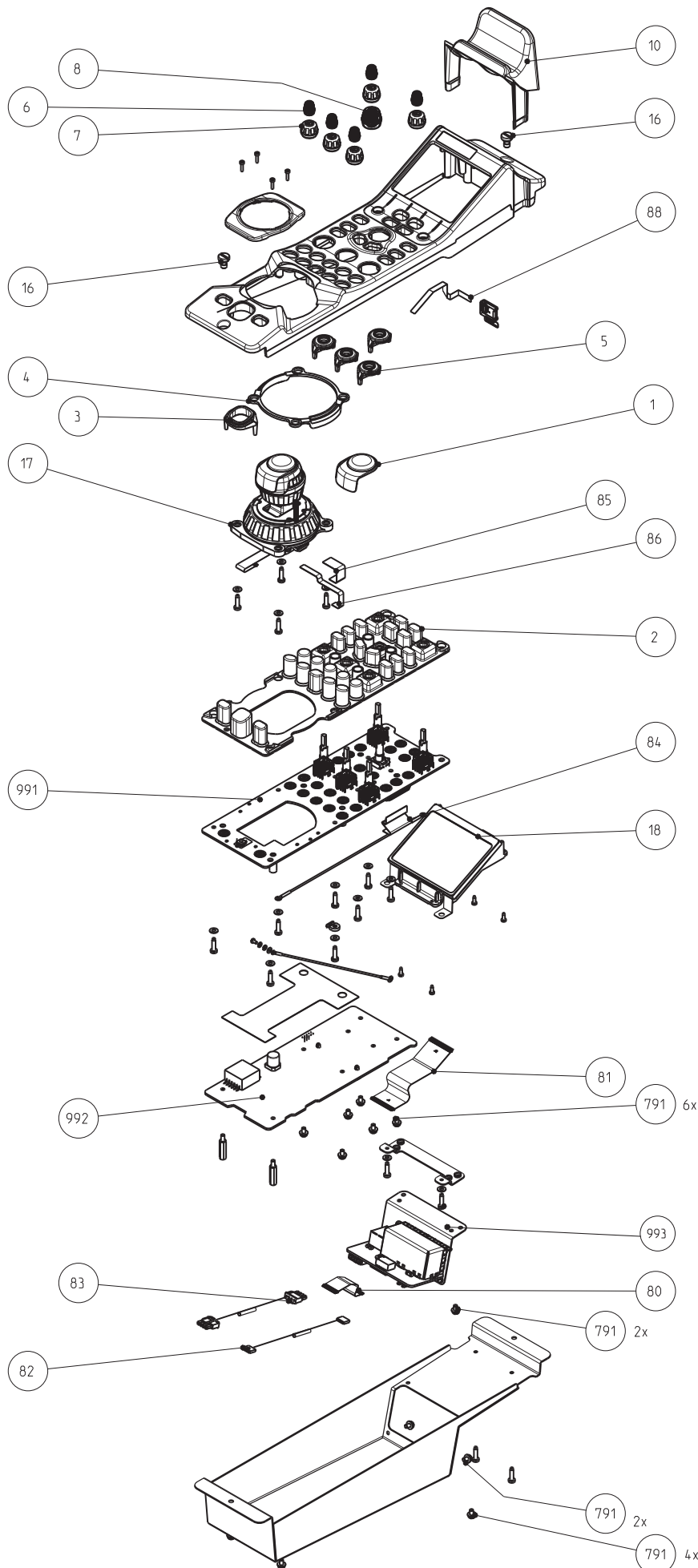
**11-00188-000 - CGP MAINASSEMBLY**

List of Field Replacable Units (FRUs):

<b>Pos</b>	<b>Part Number</b>	<b>Description</b>	<b>QTY</b>
18	94-00052-000	CGP DISPLAY ASSEMBLY	1
991	522-00087-01	PCBA CGP Rotary Switch LED Board	1
992	522-00086-01	PCBA CGP Main Board	1
993	90-00055-000	PCBA CGP Connector Board	1
10	4-000000047-00	FRU kit CGP Tablet Holder	3
16	4-000000041-00	FRU kit SCREW M5X1.7	20
17	4-000000046-00	CGP STICK ASSEMBLY (Incl. Pos 1 + 85 + 86)	1
791	4-000000020-00	FRU kit COMBI SCR PAN STL ST M3X6	50

	<b>4-000000044-00</b>	<b>FRU kit Misc parts CGP500</b>	
1		CGP STICK PREVIEWCAP	2
2		CGP KEYPAD	2
3		CGP LIGHTGUIDE PREVIEW	2
4		CGP LIGHTGUIDE MAINRING	2
5		CGP LIGHTGUIDE ROTARY	8
6		CGP KNOB ROTARY TOP	10
7		CGP KNOB ROTARY BOTTOM	10
8		CGP KNOB ROTARY CGA	2

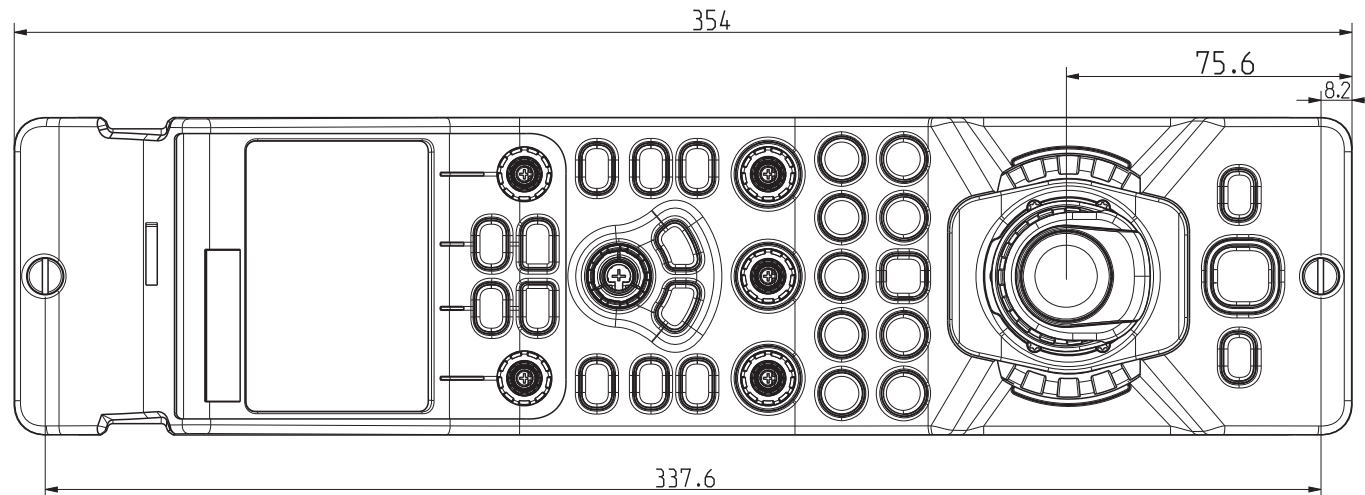
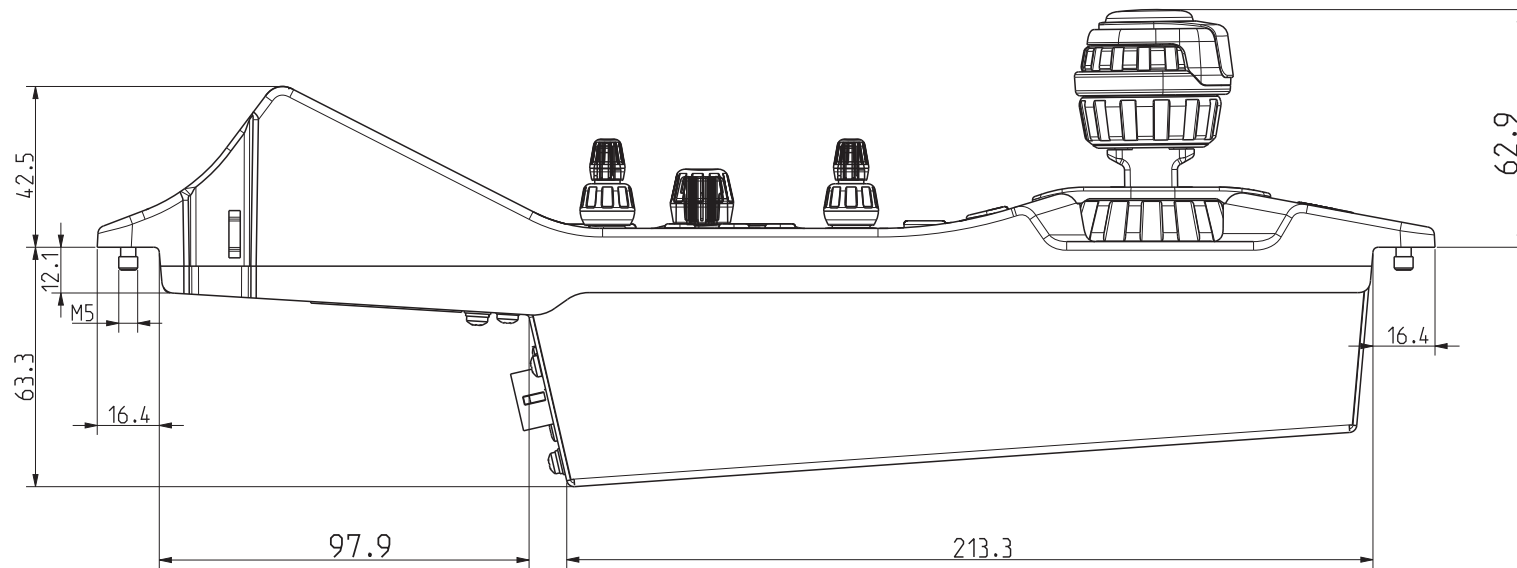
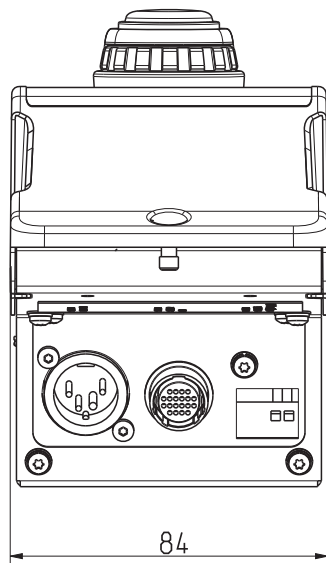
	<b>4-000000045-00</b>	<b>FRU kit connections CGP500</b>	
80		PCBA CGP Flex MB2CB	2
81		PCBA CGP Flex MB2LAB	2
82		POWER CABLE ASSY 12V CGP	2
83		POWER CABLE ASSY POE CGP	2
84		FFC FH40 50P SS TL35mm	2
85		FFC FH40 20P OS TL50mm	2
86		FFC FH40 10P OS TL80mm	2
88		CLB FLEX 10P FFC 0.5 SUMICARD TL=78MM 30V	2










THIS DOCUMENT IS THE PROPERTY OF GRASS VALLEY  
IT SHALL NOT BE REPRODUCED NOR TRANSMITTED TO A THIRD PARTY WITHOUT PRIOR WRITTEN  
CONSENT OF THE COMPANY



MATERIAL AND FINISHES MUST BE RoHS COMPLIANT		DOCUMENT NUMBER: SHEET:043-01	
 grass valley		11-00188-00	
DESCRIPTION:	CGP MAINASSEMBLY		
GENERAL ROUGHNESS:	IF TOLERANCE AND TOLERANCE TABLE ARE ABSENT THEN APPLY DIM $\pm 0.2$ ANGLE $\pm 1^\circ$	UNIT: 	SCALE: 
		FORMAT:	SHEET:

