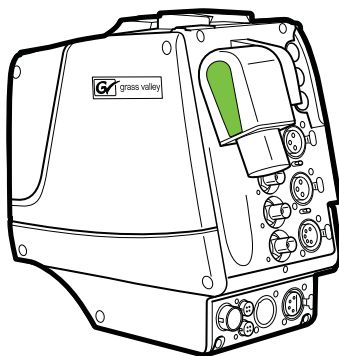


Maintenance Manual

3922 496 32191 June 2014 v1.1



LDX 5640

3G Triax LDX adapter

Declaration of Conformity

We, Grass Valley Nederland B.V., Kapittelweg 10, 4827 HG Breda, The Netherlands, declare under our sole responsibility that this product is in compliance with the following standards:

- EN60065 : Safety
- EN55103-1: EMC (Emission)
- EN55103-2: EMC (Immunity)

following the provisions of:

- a. the Low Voltage directive 2006/95/EC
- b. the EMC directive 2004/108/EC

FCC CLASS A Statement

This product generates, uses, and can radiate radio frequency energy and if not installed and used in accordance with the instructions, may cause interference to radio communications.

It has been tested and found to comply with the limits for a CLASS A digital device pursuant to part 15 of the FCC rules, which are designed to provide reasonable protection against such interference when operated in a commercial environment.

Operation of this product in a residential area is likely to cause interference in which case the user at his own expense will be required to take whatever measures may be required to correct the interference.

Copyright

Copyright Grass Valley Nederland B.V. 2014. Copying of this document and giving it to others, and the use or communication of the contents thereof, are forbidden without express authority. Offenders are liable to the payment of damages. All rights are reserved in the event of the grant of a patent or the registration of a utility model or design. Liable to technical alterations in the course of further development.

Trademarks

Grass Valley, LDX Series and derivatives are trademarks of Belden Inc. or Grass Valley. All other tradenames referenced are service marks, trademarks, or registered trademarks of their respective companies.

Website

Visit the Grass Valley public website to download the latest user's guide updates and additional information about your broadcast product:

www.grassvalley.com

End-of-life product recycling



Grass Valley's innovation and excellence in product design also extends to the programs we've established to manage the recycling of our products. Grass Valley has developed a comprehensive end-of-life product take back program for recycle or disposal of end-of-life products. Our program meets the requirements of the European Union's WEEE Directive and in the United States from the Environmental Protection Agency, individual state or local agencies.

Grass Valley's end-of-life product take back program assures proper disposal by use of Best Available Technology. This program accepts any Grass Valley branded equipment. Upon request, a Certificate of Recycling or a Certificate of Destruction, depending on the ultimate disposition of the product, can be sent to the requester. Grass Valley will be responsible for all costs associated with recycling and disposal, including freight, however you are responsible for the removal of the equipment from your facility and packing the equipment ready for pickup.

For further information on the Grass Valley product take back system please contact Grass Valley at + 800 80 80 20 20 or +33 1 48 25 20 20 from most other countries. In the US and Canada please call 800-547-8949 or 530-478-4148. Ask to be connected to the EH&S Department. In on, information concerning Grass Valley's environmental policy can be found at: www.grassvalley.com/about/environmental-policy

Important information

This information is intended as a guide for trained and qualified personnel who are aware of the dangers involved in handling potentially hazardous electrical / electronic equipment. It is not intended to contain a complete list of all safety precautions which should be observed by personnel in using this or other electronic equipment.

The installation, maintenance and service of this equipment involves risks both to personnel and equipment and must be performed only by qualified personnel exercising due care.

Personnel engaged in the installation, operation, maintenance or servicing of this equipment are urged to become familiar with First Aid theory and practises.

During installation and operation of this equipment, local building safety and fire protection standards must be observed.

Whenever it is likely that safe operation is impaired, the apparatus must be made inoperative and secured against any unintended operation. The appropriate servicing authority must then be informed. For example, safety is likely to be impaired if the apparatus fails to perform intended function or shows visible damage.

Warnings and Cautions

When performing service, be sure to read and comply with the warning and caution notices appearing in the manuals. Warnings indicate danger that requires correct procedures or practices to prevent death or injury to personnel. Cautions indicate procedures or practices that should be followed to prevent damage or destruction to equipment to property.

Warnings

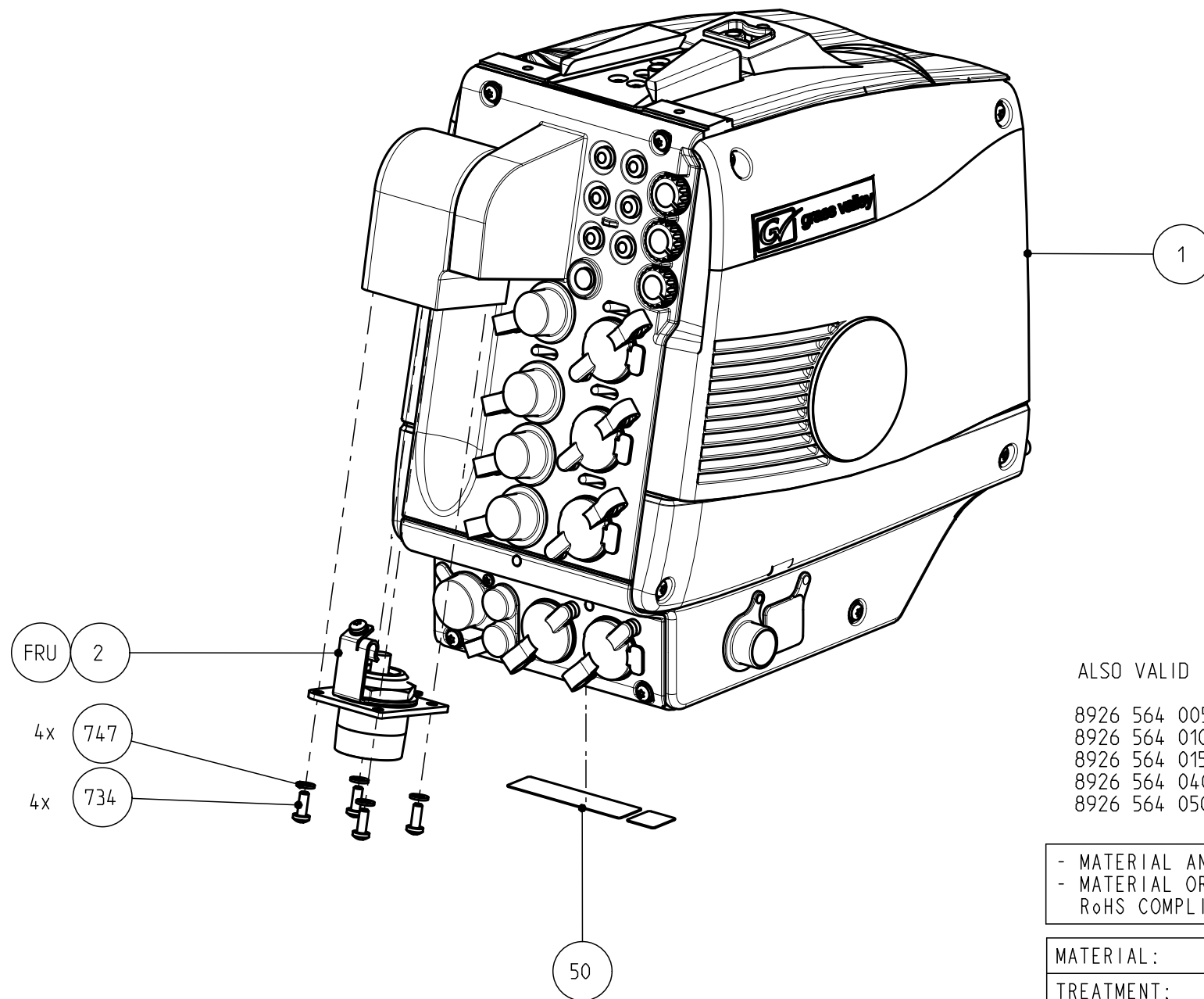
- THE CURRENTS AND VOLTAGES PRESENT IN THIS EQUIPMENT ARE DANGEROUS. ALL PERSONNEL MUST AT ALL TIMES FOLLOW THE SAFETY REGULATIONS.
- ALWAYS DISCONNECT POWER BEFORE REMOVING COVERS OR PANELS.
- ALWAYS DISCHARGE HIGH VOLTAGE POINTS BEFORE SERVICING.
- NEVER MAKE INTERNAL ADJUSTMENTS, PERFORM MAINTENANCE OR SERVICE WHEN ALONE OR WHEN FATIGUED.
- IN CASE OF AN EMERGENCY ENSURE THAT THE POWER IS DISCONNECTED.
- ANY INTERRUPTION OF THE PROTECTION CONDUCTOR INSIDE OR OUTSIDE THE APPARATUS, OR DISCONNECTION OF THE PROTECTIVE EARTH TERMINAL, IS LIKELY TO MAKE THE APPARATUS DANGEROUS. INTENTIONAL INTERRUPTION IS PROHIBITED.
- USE ONLY FUSES OF THE TYPE AND RATING SPECIFIED.

Cautions

- To prevent risk of overheating, ventilate the product correctly.

THIS DOCUMENT IS THE PROPERTY OF GRASS VALLEY
IT SHALL NOT BE REPRODUCED NOR TRANSMITTED TO A THIRD PARTY WITHOUT PRIOR WRITTEN
CONSENT OF THE COMPANY

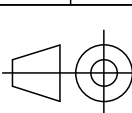

TORQUE TABLE	
Tolerances unless otherwise stated: $\pm 10\%$	
Torque unless otherwise stated:	
Thread size	Torque (Nm)
M2	0.65
M2.5	0.75
M3	1
M4	2



ALSO VALID FOR:

8926 564 00501 3G TRIAX LDX ADAPTER, ARD
8926 564 01001 3G TRIAX LDX ADAPTER, LEMO-4E
8926 564 01501 3G TRIAX LDX ADAPTER, LEMO-3T
8926 564 04001 3G TRIAX LDX ADAPTER, BBC-LEMO
8926 564 05001 3G TRIAX LDX ADAPTER, TRILOCK

- MATERIAL AND FINISHES MUST BE RoHS COMPLIANT
- MATERIAL OR PACKAGING MUST BE MARKED WITH RoHS COMPLIANCE MARKING OR LABEL

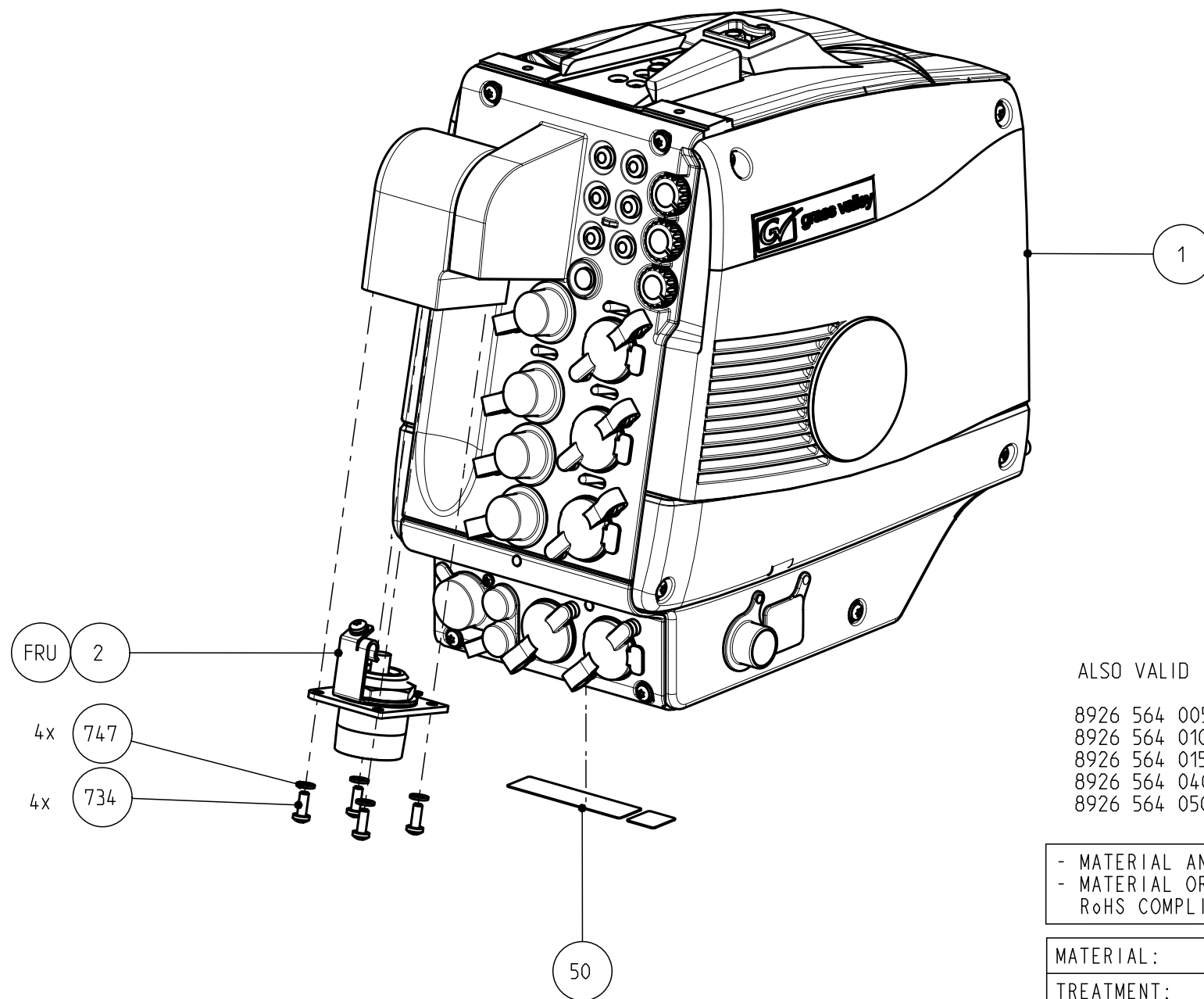
MATERIAL:					SCALE	
TREATMENT:					1:2	
FINISH:						
DRAWN BY:	DATE:	GENERAL ROUGHNESS:	TOLERANCES UNLESS OTHERWISE STATED:			UNIT	
E. SCHMIT	2013-10-31	Ra 3.2 n um	DIMENSION:±0,2	ANGLE:	±1°		
TITLE:		3G LDX TRIAX ADAPTER, FISCHER					
		DOCUMENT NUMBER			FORMAT	SHEET	
		8926 564 0000			A3	1/1	
		RELEASE LEVEL:	...		110-01	SH120	

List of Field Replaceable Units:

	8926 564 00001	3G TRIAX LDX ADAPTER, FISCHER
Position	Part number	Description
2	3922 407 34991	TRIAX FISCHER ASSY

THIS DOCUMENT IS THE PROPERTY OF GRASS VALLEY
IT SHALL NOT BE REPRODUCED NOR TRANSMITTED TO A THIRD PARTY WITHOUT PRIOR WRITTEN
CONSENT OF THE COMPANY

TORQUE TABLE	
Tolerances unless otherwise stated: $\pm 10\%$	
Torque unless otherwise stated:	
Thread size	Torque (Nm)
M2	0.65
M2.5	0.75
M3	1
M4	2



ALSO VALID FOR:

8926 564 00501 3G TRIAX LDX ADAPTER, ARD
8926 564 01001 3G TRIAX LDX ADAPTER, LEMO-4E
8926 564 01501 3G TRIAX LDX ADAPTER, LEMO-3T
8926 564 04001 3G TRIAX LDX ADAPTER, BBC-LEMO
8926 564 05001 3G TRIAX LDX ADAPTER, TRILOCK

- MATERIAL AND FINISHES MUST BE RoHS COMPLIANT
- MATERIAL OR PACKAGING MUST BE MARKED WITH RoHS COMPLIANCE MARKING OR LABEL

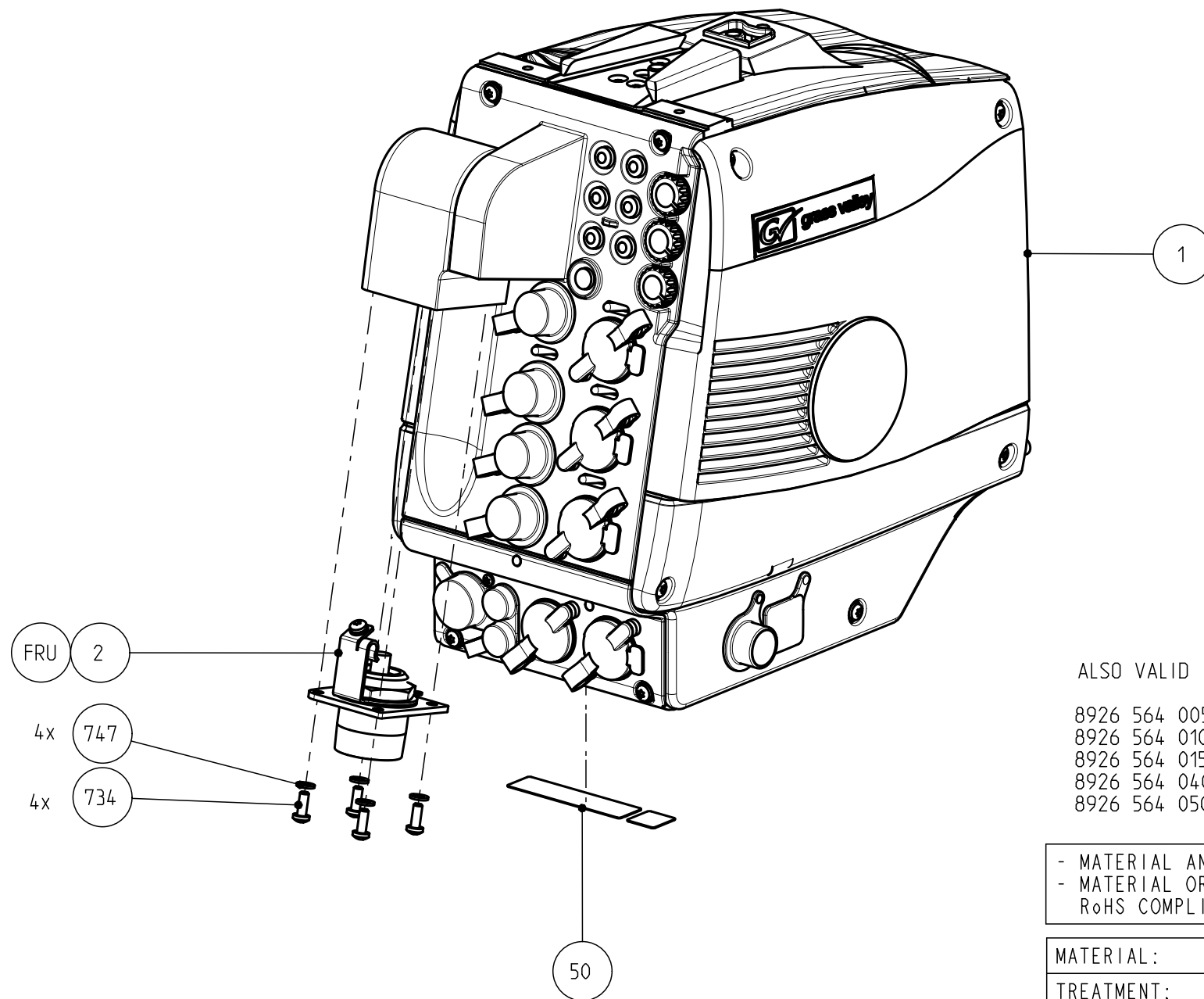
MATERIAL:			SCALE
TREATMENT:			1:2
FINISH:			
DRAWN BY:	DATE:	GENERAL ROUGHNESS:	TOLERANCES UNLESS OTHERWISE STATED:	UNIT
E. SCHMIT	2013-10-31	Ra 3.2 n um	DIMENSION: $\pm 0,2$ ANGLE: $\pm 1^\circ$	mm
TITLE:	3G LDX TRIAX ADAPTER, FISCHER			
		DOCUMENT NUMBER	FORMAT	SHEET
		8926 564 0000	A3	1/1
		RELEASE LEVEL: ...	110-01	SH120

List of Field Replaceable Units:

	8926 564 00501	3G TRIAX LDX ADAPTER, ARD
Position	Part number	Description
2	3922 407 34981	TRIAx ARD ASSY

THIS DOCUMENT IS THE PROPERTY OF GRASS VALLEY
IT SHALL NOT BE REPRODUCED NOR TRANSMITTED TO A THIRD PARTY WITHOUT PRIOR WRITTEN
CONSENT OF THE COMPANY

TORQUE TABLE	
Tolerances unless otherwise stated: $\pm 10\%$	
Torque unless otherwise stated:	
Thread size	Torque (Nm)
M2	0.65
M2.5	0.75
M3	1
M4	2



ALSO VALID FOR:

8926 564 00501 3G TRIAX LDX ADAPTER, ARD
8926 564 01001 3G TRIAX LDX ADAPTER, LEMO-4E
8926 564 01501 3G TRIAX LDX ADAPTER, LEMO-3T
8926 564 04001 3G TRIAX LDX ADAPTER, BBC-LEMO
8926 564 05001 3G TRIAX LDX ADAPTER, TRILOCK

- MATERIAL AND FINISHES MUST BE RoHS COMPLIANT
- MATERIAL OR PACKAGING MUST BE MARKED WITH RoHS COMPLIANCE MARKING OR LABEL

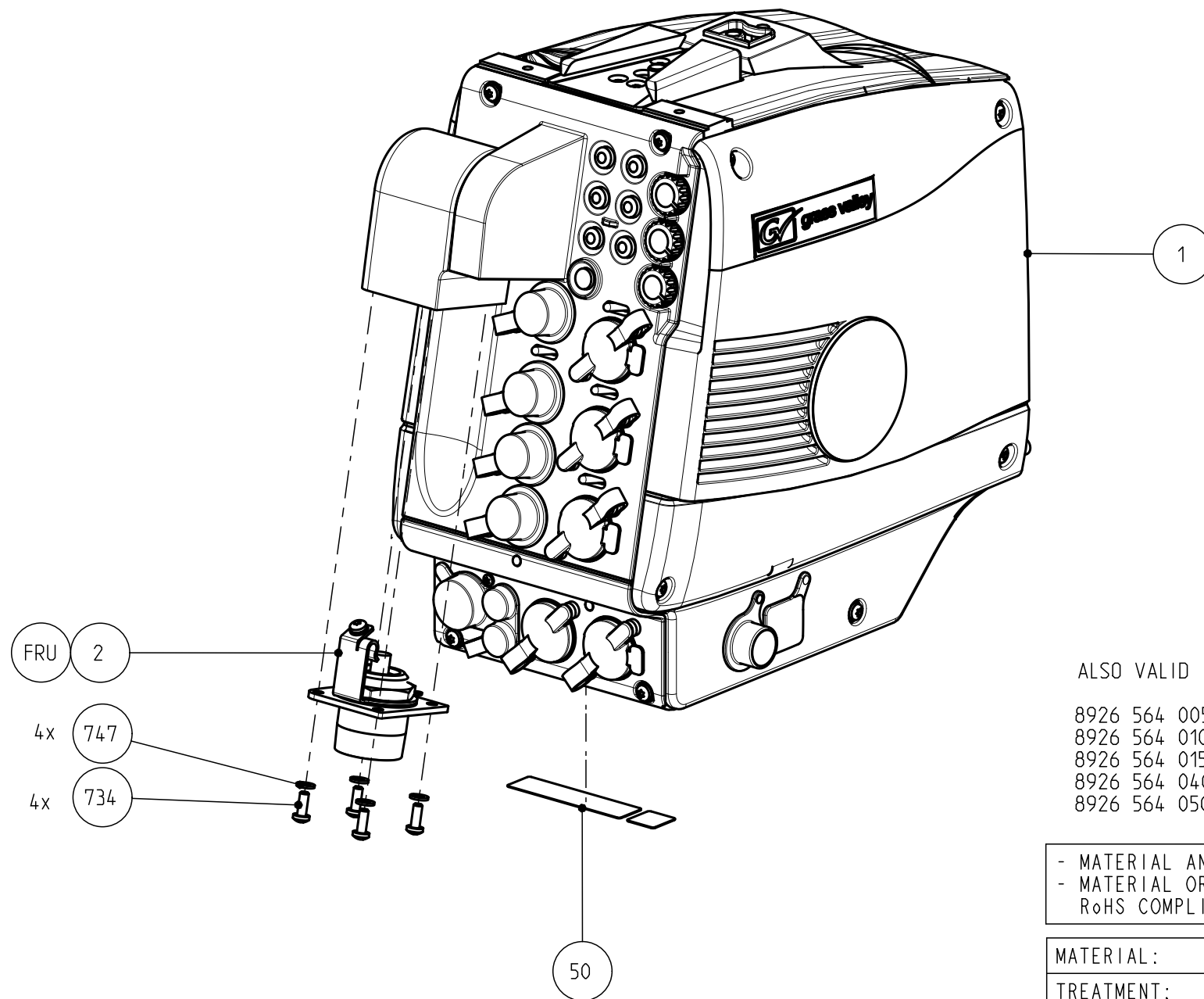
MATERIAL:			SCALE
TREATMENT:			1:2
FINISH:			
DRAWN BY:	DATE:	GENERAL ROUGHNESS:	TOLERANCES UNLESS OTHERWISE STATED:	UNIT
E. SCHMIT	2013-10-31	Ra 3.2 n um	DIMENSION: $\pm 0,2$ ANGLE: $\pm 1^\circ$	mm
TITLE:	3G LDX TRIAX ADAPTER, FISCHER			
		DOCUMENT NUMBER	FORMAT	SHEET
		8926 564 0000	A3	1/1
		RELEASE LEVEL: ...	110-01	SH120

List of Field Replaceable Units:

	8926 564 01001	3G TRIAX LDX ADAPTER, LEMO-4E
Position	Part number	Description
2	3922 407 34961	TRIAX 4E ASSY

THIS DOCUMENT IS THE PROPERTY OF GRASS VALLEY
IT SHALL NOT BE REPRODUCED NOR TRANSMITTED TO A THIRD PARTY WITHOUT PRIOR WRITTEN
CONSENT OF THE COMPANY

TORQUE TABLE	
Tolerances unless otherwise stated: $\pm 10\%$	
Torque unless otherwise stated:	
Thread size	Torque (Nm)
M2	0.65
M2.5	0.75
M3	1
M4	2



ALSO VALID FOR:

8926 564 00501 3G TRIAX LDX ADAPTER, ARD
8926 564 01001 3G TRIAX LDX ADAPTER, LEMO-4E
8926 564 01501 3G TRIAX LDX ADAPTER, LEMO-3T
8926 564 04001 3G TRIAX LDX ADAPTER, BBC-LEMO
8926 564 05001 3G TRIAX LDX ADAPTER, TRILOCK

- MATERIAL AND FINISHES MUST BE RoHS COMPLIANT
- MATERIAL OR PACKAGING MUST BE MARKED WITH RoHS COMPLIANCE MARKING OR LABEL

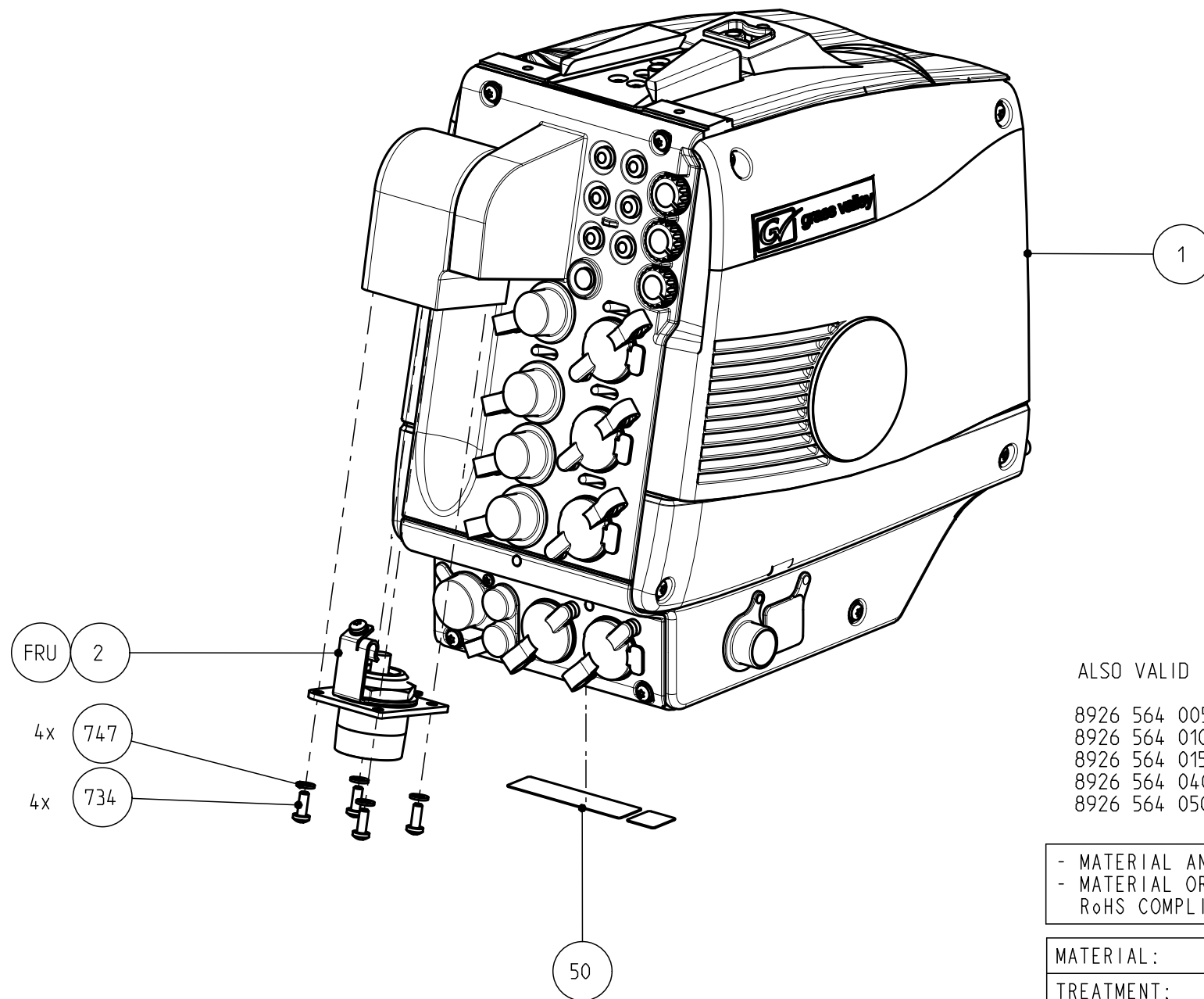
MATERIAL:			SCALE
TREATMENT:			1:2
FINISH:			UNIT
DRAWN BY:	DATE:			mm
E. SCHMIT	2013-10-31	GENERAL ROUGHNESS:	TOLERANCES UNLESS OTHERWISE STATED:	
		Ra 3.2 n um	DIMENSION: $\pm 0,2$ ANGLE: $\pm 1^\circ$	
TITLE:	3G LDX TRIAX ADAPTER, FISCHER			
		DOCUMENT NUMBER	FORMAT	SHEET
		8926 564 0000	A3	1/1
		RELEASE LEVEL:	...	110-01 SH120

List of Field Replaceable Units:

	8926 564 01501	3G TRIAX LDX ADAPTER, LEMO-3T
Position	Part number	Description
2	3922 407 35001	TRIAX 3T ASSY

THIS DOCUMENT IS THE PROPERTY OF GRASS VALLEY
IT SHALL NOT BE REPRODUCED NOR TRANSMITTED TO A THIRD PARTY WITHOUT PRIOR WRITTEN
CONSENT OF THE COMPANY

TORQUE TABLE	
Tolerances unless otherwise stated: $\pm 10\%$	
Torque unless otherwise stated:	
Thread size	Torque (Nm)
M2	0.65
M2.5	0.75
M3	1
M4	2



ALSO VALID FOR:

8926 564 00501 3G TRIAX LDX ADAPTER, ARD
8926 564 01001 3G TRIAX LDX ADAPTER, LEMO-4E
8926 564 01501 3G TRIAX LDX ADAPTER, LEMO-3T
8926 564 04001 3G TRIAX LDX ADAPTER, BBC-LEMO
8926 564 05001 3G TRIAX LDX ADAPTER, TRILOCK

- MATERIAL AND FINISHES MUST BE RoHS COMPLIANT
- MATERIAL OR PACKAGING MUST BE MARKED WITH RoHS COMPLIANCE MARKING OR LABEL

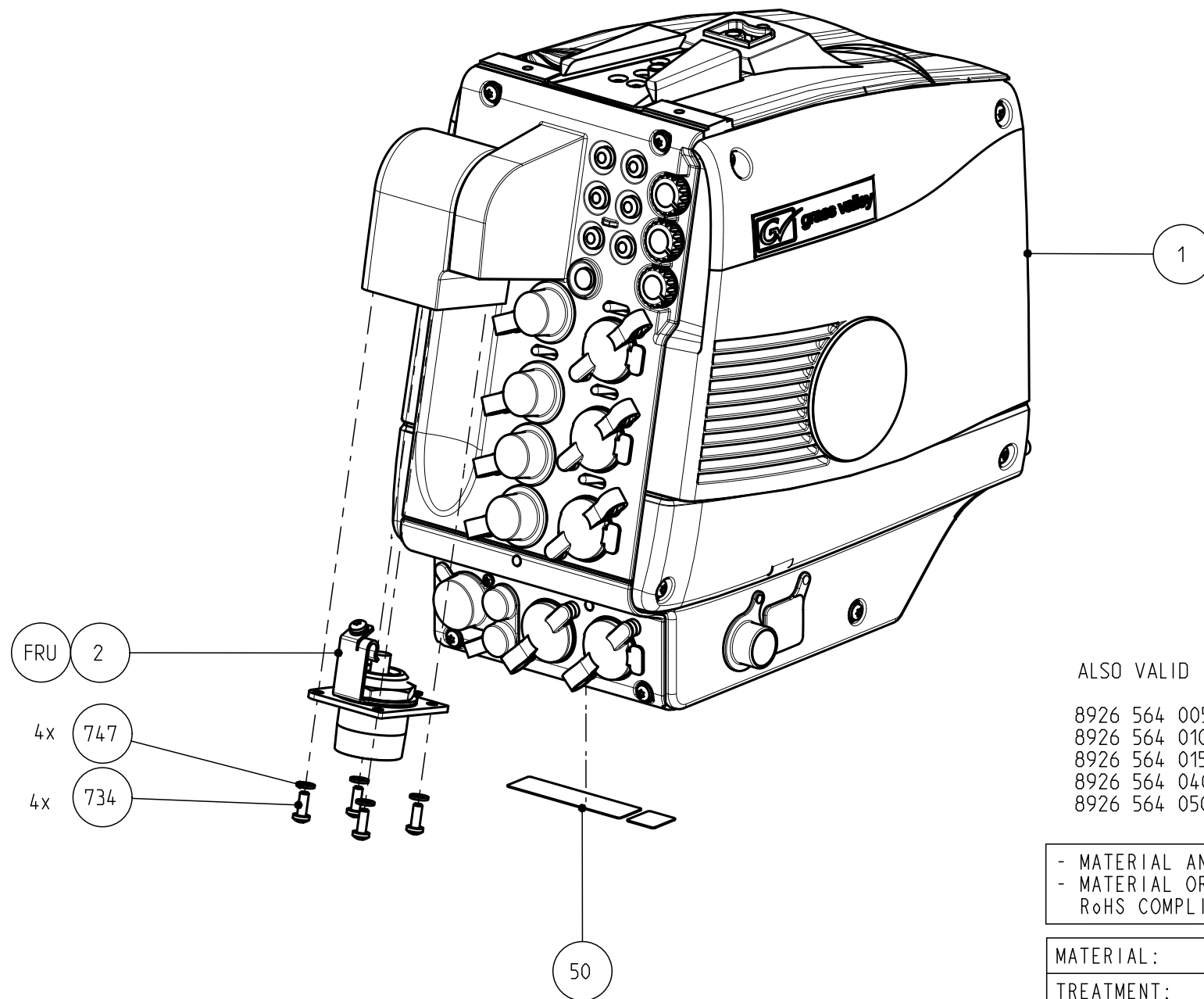
MATERIAL:			SCALE
TREATMENT:			1:2
FINISH:			UNIT
DRAWN BY:	DATE:			mm
E. SCHMIT	2013-10-31	GENERAL ROUGHNESS:	TOLERANCES UNLESS OTHERWISE STATED:	
		Ra 3.2 n um	DIMENSION: $\pm 0,2$ ANGLE: $\pm 1^\circ$	
TITLE:	3G LDX TRIAX ADAPTER, FISCHER			
		DOCUMENT NUMBER	FORMAT	SHEET
		8926 564 0000	A3	1/1
		RELEASE LEVEL: ...	110-01	SH120

List of Field Replaceable Units:

	8926 564 04001	3G TRIAX LDX ADAPTER, BBC-LEMO
Position	Part number	Description
2	3922 407 34951	TRIAX M4 ASSY

THIS DOCUMENT IS THE PROPERTY OF GRASS VALLEY
IT SHALL NOT BE REPRODUCED NOR TRANSMITTED TO A THIRD PARTY WITHOUT PRIOR WRITTEN
CONSENT OF THE COMPANY

TORQUE TABLE	
Tolerances unless otherwise stated: $\pm 10\%$	
Torque unless otherwise stated:	
Thread size	Torque (Nm)
M2	0.65
M2.5	0.75
M3	1
M4	2



ALSO VALID FOR:

8926 564 00501 3G TRIAX LDX ADAPTER, ARD
8926 564 01001 3G TRIAX LDX ADAPTER, LEMO-4E
8926 564 01501 3G TRIAX LDX ADAPTER, LEMO-3T
8926 564 04001 3G TRIAX LDX ADAPTER, BBC-LEMO
8926 564 05001 3G TRIAX LDX ADAPTER, TRILOCK

- MATERIAL AND FINISHES MUST BE RoHS COMPLIANT
- MATERIAL OR PACKAGING MUST BE MARKED WITH RoHS COMPLIANCE MARKING OR LABEL

MATERIAL:			SCALE
TREATMENT:			1:2
FINISH:			
DRAWN BY:	DATE:	GENERAL ROUGHNESS:	TOLERANCES UNLESS OTHERWISE STATED:	UNIT
E. SCHMIT	2013-10-31	Ra 3.2 n um	DIMENSION: $\pm 0,2$ ANGLE: $\pm 1^\circ$	mm
TITLE:	3G LDX TRIAX ADAPTER, FISCHER			
		DOCUMENT NUMBER	FORMAT	SHEET
		8926 564 0000	A3	1/1
		RELEASE LEVEL: ...	110-01	SH120

List of Field Replaceable Units:

	8926 564 05001	3G TRIAX LDX ADAPTER, TRILOCK
Position	Part number	Description
2	3922 407 34971	TRIAX 4A ASSY

TORQUE 0.75Nm (5x)

TORQUE 0.75Nm (4x)

TORQUE 0.75Nm (5x)

TORQUE TABLE	
Tolerances unless otherwise stated: $\pm 10\%$	
Torque unless otherwise stated:	
Thread size	Torque (Nm)
M2	0.65
M2.5	0.75
M3	1
M4	2

- MATERIAL AND FINISHES MUST BE RoHS COMPLIANT
- MATERIAL OR PACKAGING MUST BE MARKED WITH
RoHS COMPLIANCE MARKING OR LABEL

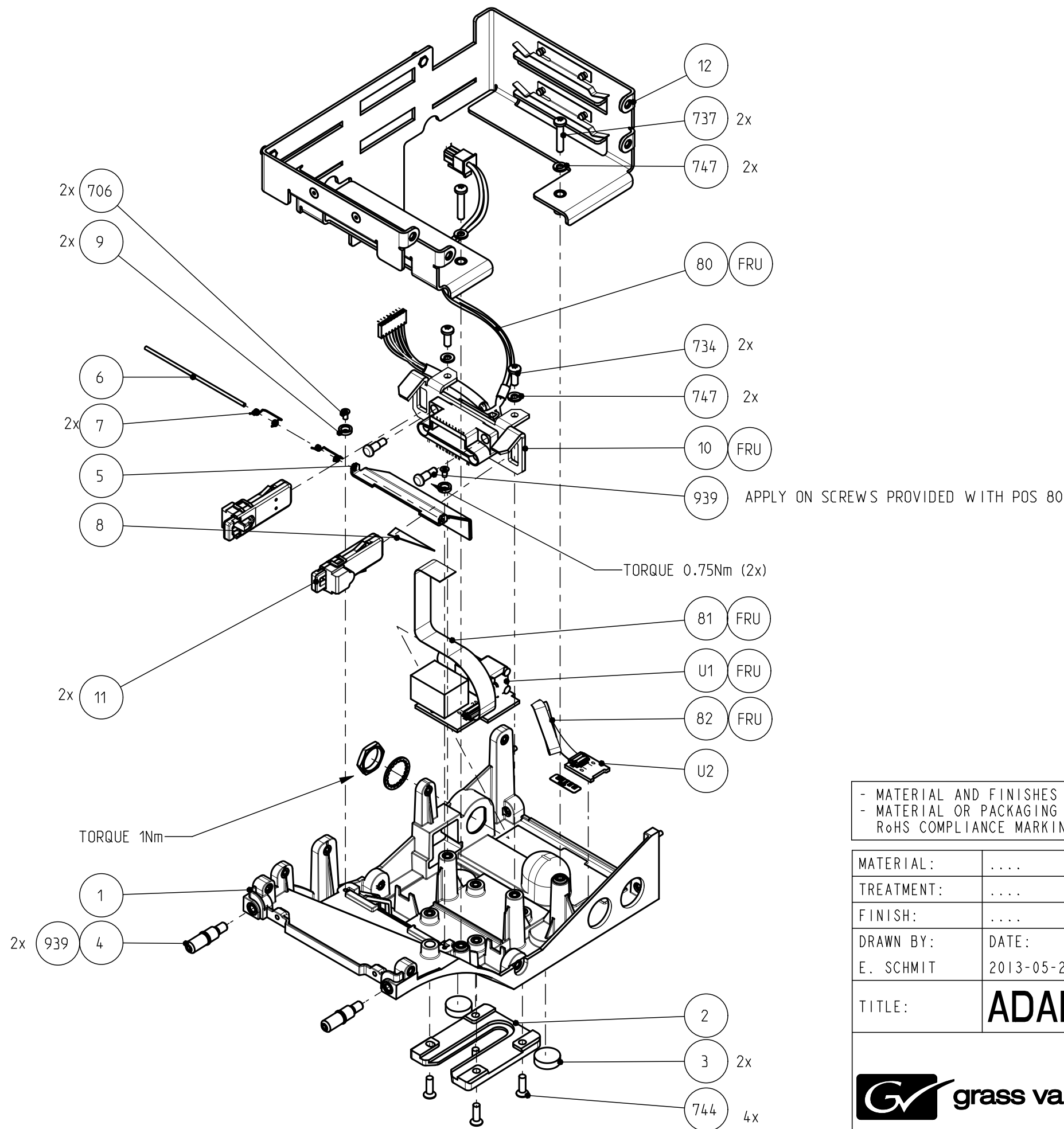
MATERIAL:	SCALE 1:2	
TREATMENT:		
FINISH:	UNIT mm	
DRAWN BY:	DATE:		
E. SCHMIT	2013-10-31	GENERAL ROUGHNESS: Ra 3.2 n um	TOLERANCES UNLESS OTHERWISE STATED: DIMENSION: $\pm 0,2$ ANGLE: $\pm 1^\circ$
TITLE:		GNDLS LDX 3G TRIAX ADAPTER	
grass valley		DOCUMENT NUMBER	FORMAT
		3922 407 6363	A2
RELEASE LEVEL:		110-01	120

Rev	Name	Date
1		

List of Field Replaceable Units:

	3922 407 63631	GNDLS LDX 3G TRIAX ADAPTER
Position	Part number	Description
80	3922 407 63562	TRIAX CABLE ASSY
82	3922 407 63583	TRIAX POWER CABLE ASSY
83	3922 411 56841	PCB F--- 20P FLEX ANGLED CABLE
85	3922 205 00005	CLB FLEX 10P FFC 0.5 SUMICARD TL=46MM 30V
746	2522 600 27017	WASH STL ST 3,2X7
U1	3922 406 56901	PCBA POWER BOARD
U2	3922 406 56951	PCBA TRANSMISSION BOARD TRIAX
U3	3922 406 56931	PCBA CABLE DRIVER POWER FILTER

THIS DOCUMENT IS THE PROPERTY OF GRASS VALLEY
IT SHALL NOT BE REPRODUCED NOR TRANSMITTED TO A THIRD PARTY WITHOUT PRIOR WRITTEN
CONSENT OF THE COMPANY



TORQUE TABLE	
Tolerances unless otherwise stated: $\pm 10\%$	
Torque unless otherwise stated:	
Thread size	Torque (Nm)
M2	0.65
M2.5	0.75
M3	1
M4	2

- MATERIAL AND FINISHES MUST BE RoHS COMPLIANT
- MATERIAL OR PACKAGING MUST BE MARKED WITH
RoHS COMPLIANCE MARKING OR LABEL

MATERIAL:			SCALE
TREATMENT:			1:2
FINISH:	UNIT		mm
DRAWN BY:	DATE:			
E. SCHMIT	2013-05-29	GENERAL ROUGHNESS:	TOLERANCES UNLESS OTHERWISE STATED:	
		Ra 3.2 n um	DIMENSION: $\pm 0,2$ ANGLE: $\pm 1^\circ$	
TITLE:	ADAPTER BOTTOM PLATE ASSY			
		DOCUMENT NUMBER	FORMAT	SHEET
		3922 407 6338	A3	1/1
		RELEASE LEVEL:	110-01	120

List of Field Replaceable Units:

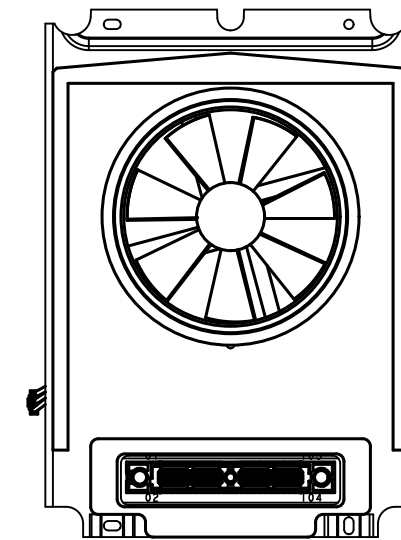
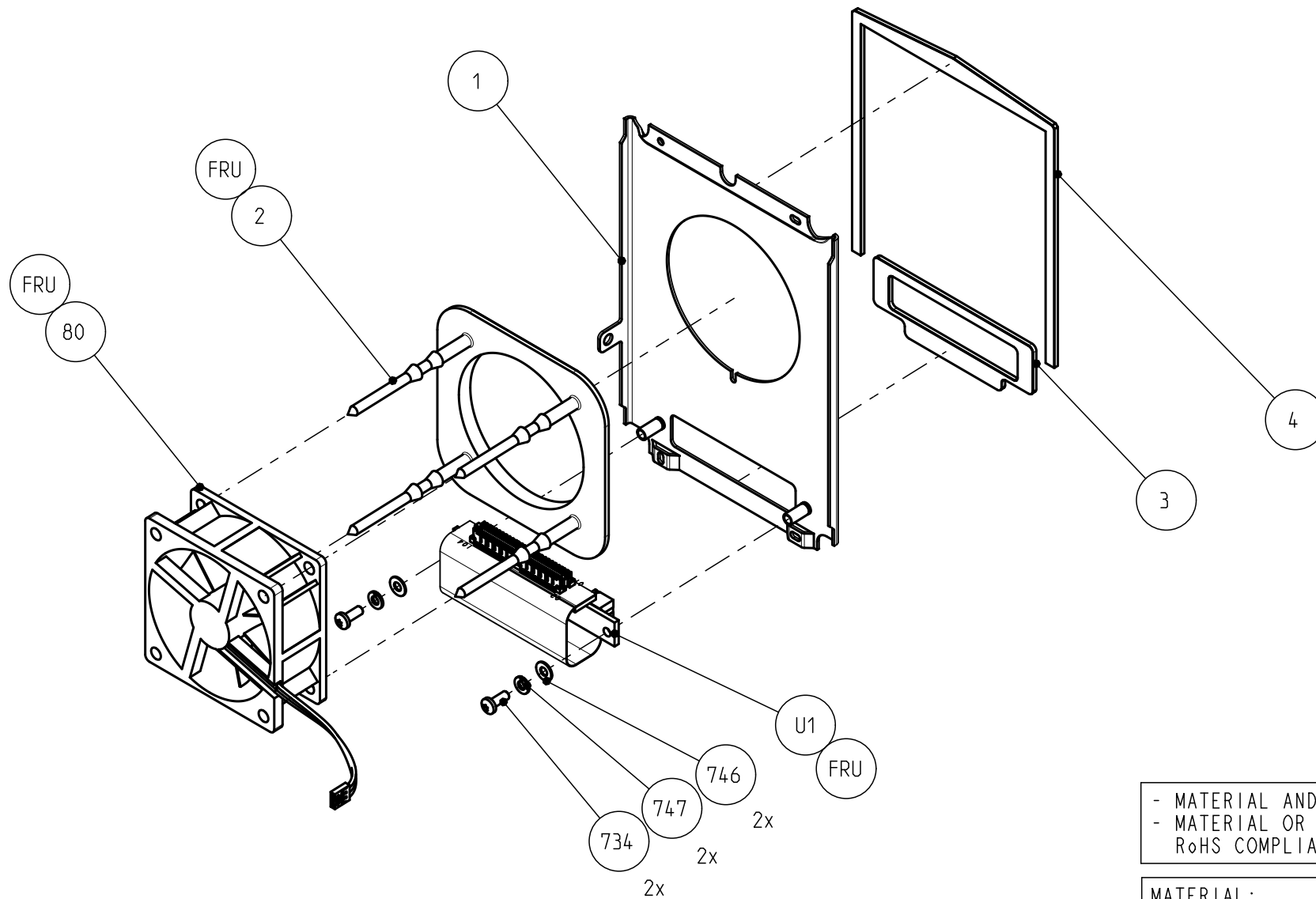
	3922 407 63381	ADAPTER BOTTOM PLATE ASSY
Position	Part number	Description
2	3922 404 23994	V BRACKET LONG
10	3922 404 42024	CONN MOUNT HS ADAPTOR
80	3922 407 63611	HOT SHOE CABLE ASSY
81	3922 411 56992	PCB F--- 20P FLEX CABLE
82	2422 015 19425	CLB FLEX 10P FFC 0.5 SUMICARD TL=138MM 30V
U1	3922 406 56891	PCBA RIGHT CONNECTOR BRD

List of Field Replaceable Units:

	3922 407 63411	ADAPTER BACK PANEL ASSY
Position	Part number	Description
8	3922 400 08412	LONG KNOB
9	3922 400 11991	XLR FEM CAP
10	3922 400 12001	XLR MALE CAP
11	3922 400 11971	BNC CAP
12	3922 400 12011	AUX CAP
80	3922 407 63591	6P POWER CABLE ASSY
746	2522 600 27017	WASH STL ST 3,2X7
U1	3922 406 56911	PCBA BACKPANEL AUDIO
U2	3922 406 56871	PCBA POWER CONNECTOR BRD
U3	3922 406 56881	PCBA AUX CONNECTOR BRD

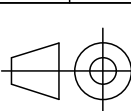

THIS DOCUMENT IS THE PROPERTY OF GRASS VALLEY
IT SHALL NOT BE REPRODUCED NOR TRANSMITTED TO A THIRD PARTY WITHOUT PRIOR WRITTEN
CONSENT OF THE COMPANY

TORQUE TABLE	
Tolerances unless otherwise stated: $\pm 10\%$	
Torque unless otherwise stated:	
Thread size	Torque (Nm)
M2	0.65
M2.5	0.75
M3	1
M4	2



POSITION SEALS

- MATERIAL AND FINISHES MUST BE RoHS COMPLIANT
- MATERIAL OR PACKAGING MUST BE MARKED WITH RoHS COMPLIANCE MARKING OR LABEL

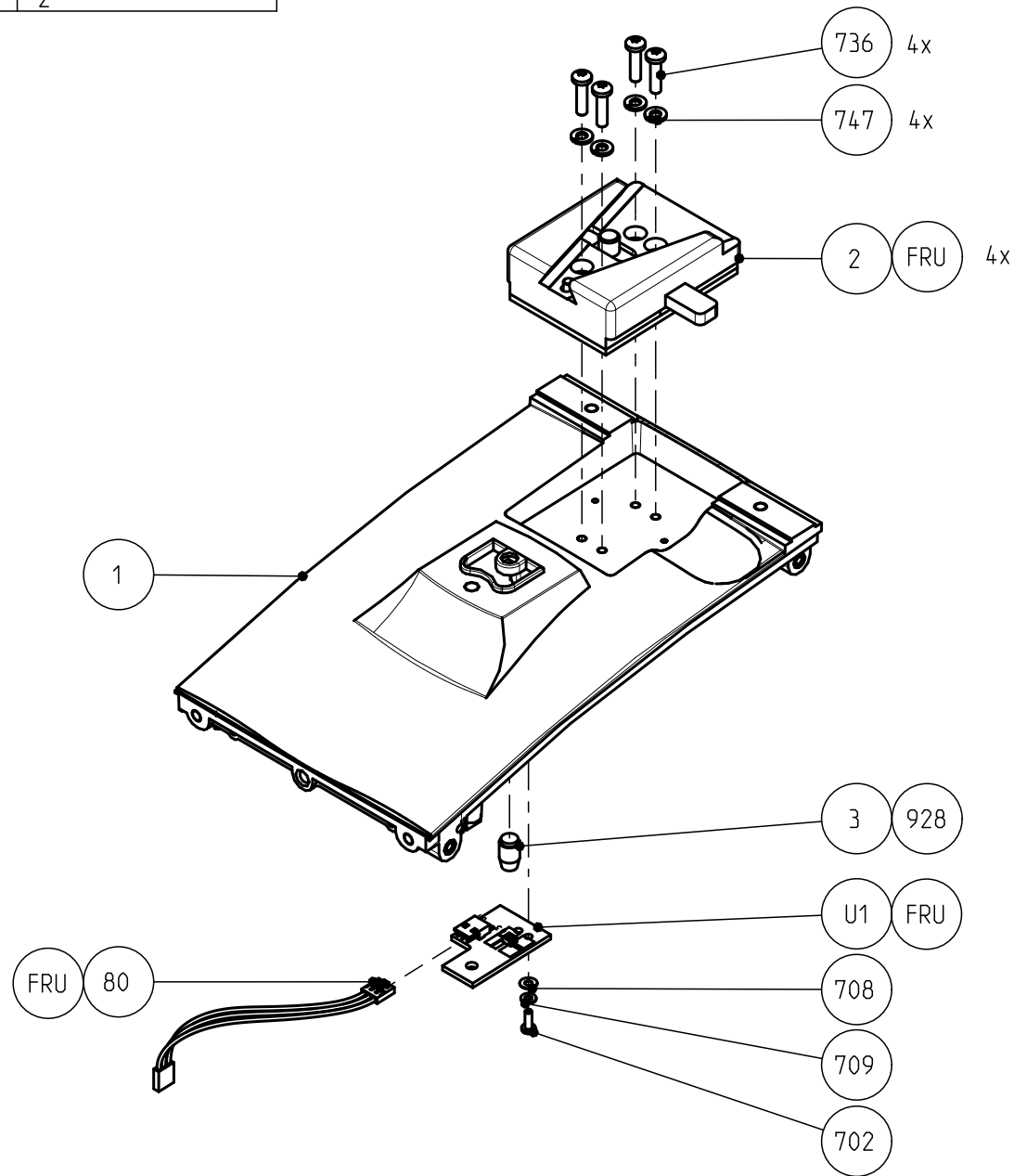
MATERIAL:				SCALE
TREATMENT:				1:2
FINISH:				
DRAWN BY:	DATE:	GENERAL ROUGHNESS:	TOLERANCES UNLESS OTHERWISE STATED:		UNIT
E. SCHMIT	2013-10-31	Ra 3.2 n um	DIMENSION:±0,2	ANGLE: ±1°	
TITLE:	ADAPTER DOCK PLATE ASSY				
 grass valley		DOCUMENT NUMBER		FORMAT	SHEET
		3922 407 6354		A3	1/1
		RELEASE LEVEL:		110-01	.

List of Field Replaceable Units:

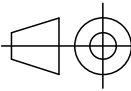

	3922 407 63541	ADAPTER DOCK PLATE ASSY
Position	Part number	Description
80	3922 407 57891	FAN ASSY HDDT ADAPTOR
746	2522 600 27017	WASH STL ST 3,2X7
U1	3922 406 56851	SAMTEC FLEX

THIS DOCUMENT IS THE PROPERTY OF GRASS VALLEY
IT SHALL NOT BE REPRODUCED NOR TRANSMITTED TO A THIRD PARTY WITHOUT PRIOR WRITTEN
CONSENT OF THE COMPANY

TORQUE TABLE	
Tolerances unless otherwise stated: $\pm 10\%$	
Torque unless otherwise stated:	
Thread size	Torque (Nm)
M2	0.65
M2.5	0.75
M3	1
M4	2



- MATERIAL AND FINISHES MUST BE RoHS COMPLIANT
- MATERIAL OR PACKAGING MUST BE MARKED WITH
RoHS COMPLIANCE MARKING OR LABEL

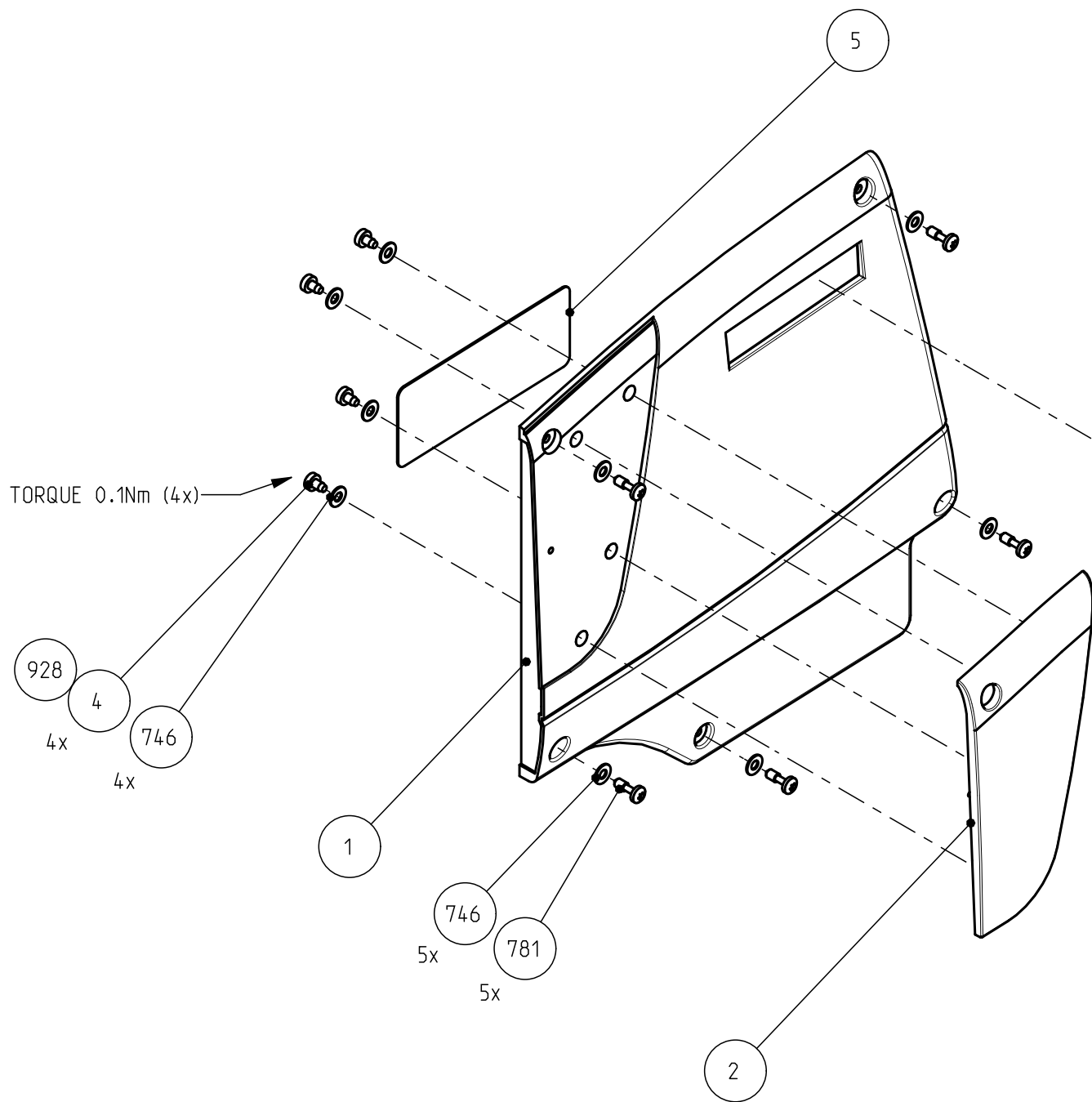
MATERIAL:				SCALE
TREATMENT:				1:2
FINISH:				
DRAWN BY:	DATE:	GENERAL ROUGHNESS:	TOLERANCES UNLESS OTHERWISE STATED:		UNIT
E. SCHMIT	2013-10-31	Ra 3.2 n um	DIMENSION:±0,2	ANGLE: ±1°	
TITLE:	ADAPTER TOP PLATE ASSY				
 grass valley		DOCUMENT NUMBER		FORMAT	SHEET
		3922 407 6344		A3	1/1
		RELEASE LEVEL:		110-01	120
		<div><div></div><div></div><div></div><div></div><div></div><div></div><div></div><div></div><div></div><div></div></div>			

List of Field Replaceable Units:

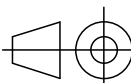

	3922 407 63441	ADAPTER TOP PLATE ASSY
Position	Part number	Description
1	3922 407 24083	TOPPLATE TRIAX PAINTED
2	3922 407 20733	QUICK MOUNT BLOCK ASSY
80	3922 407 63601	3P TALLY CABLE ASSY
U1	3922 406 56861	TALLY LIGHT BRD

THIS DOCUMENT IS THE PROPERTY OF GRASS VALLEY
IT SHALL NOT BE REPRODUCED NOR TRANSMITTED TO A THIRD PARTY WITHOUT PRIOR WRITTEN
CONSENT OF THE COMPANY

TORQUE TABLE	
Tolerances unless otherwise stated: $\pm 10\%$	
Torque unless otherwise stated:	
Thread size	Torque (Nm)
M2	0.65
M2.5	0.75
M3	1
M4	2



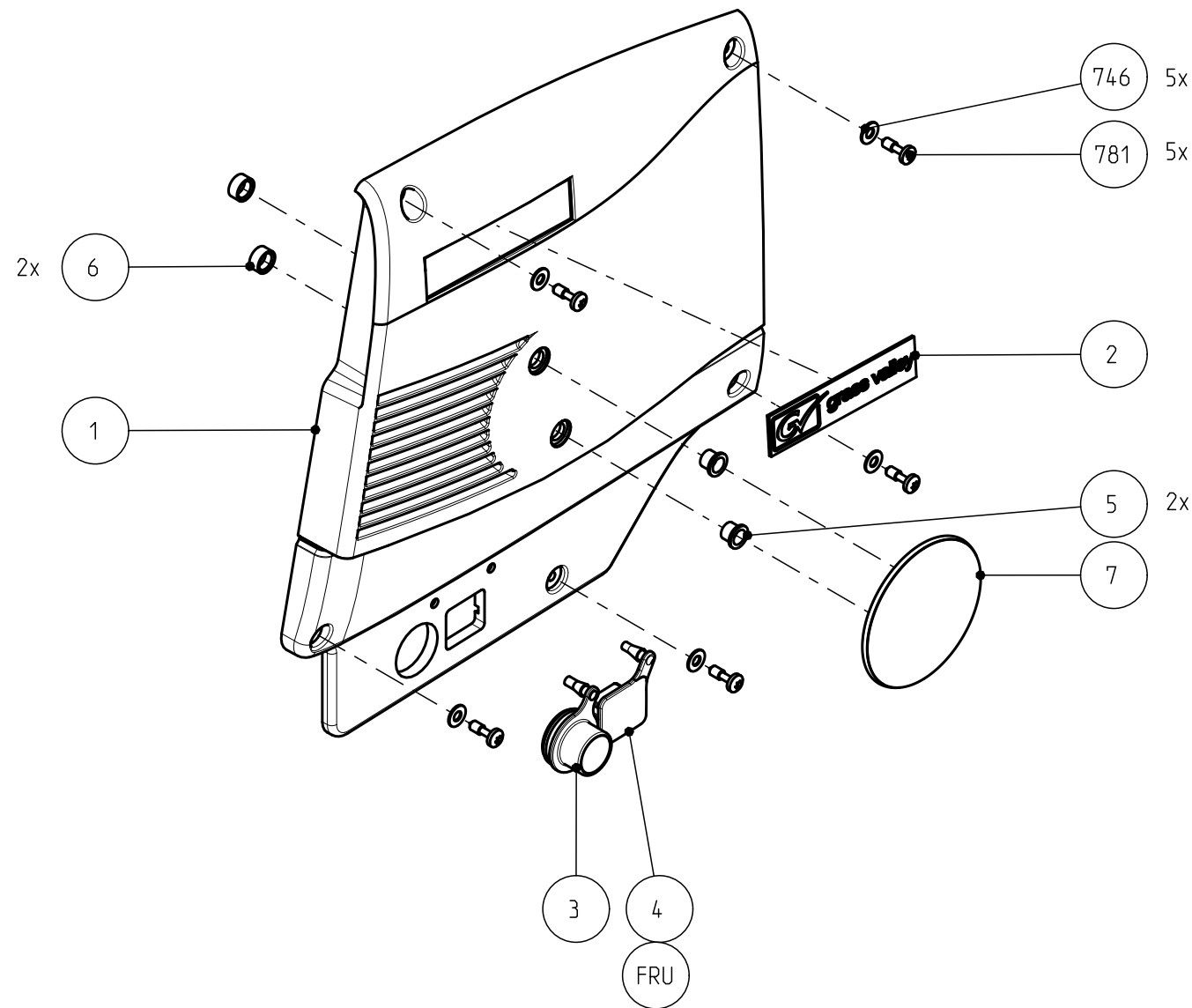
- MATERIAL AND FINISHES MUST BE RoHS COMPLIANT
- MATERIAL OR PACKAGING MUST BE MARKED WITH
RoHS COMPLIANCE MARKING OR LABEL

MATERIAL:					SCALE	
TREATMENT:					1:2	
FINISH:						
DRAWN BY:	DATE:	GENERAL ROUGHNESS:	TOLERANCES UNLESS OTHERWISE STATED:			UNIT	
E. SCHMIT	2013-10-31	Ra 3.2 n um	DIMENSION:±0,2	ANGLE: ±1°			
TITLE:	ADAPTER COVER LEFT ASSY						
 grass valley		DOCUMENT NUMBER			FORMAT	SHEET	
		3922 407 6347			A3	1/1	
		RELEASE LEVEL:			110-01	120	

List of Field Replaceable Units:

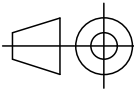

	3922 407 63471	ADAPTER COVER LEFT ASSY
Position	Part number	Description
746	2522 600 27017	WASH STL ST 3,2X7

THIS DOCUMENT IS THE PROPERTY OF GRASS VALLEY
IT SHALL NOT BE REPRODUCED NOR TRANSMITTED TO A THIRD PARTY WITHOUT PRIOR WRITTEN
CONSENT OF THE COMPANY



TORQUE TABLE	
Tolerances unless otherwise stated: $\pm 10\%$ Torque unless otherwise stated:	
Thread size	Torque (Nm)
M2	0.65
M2.5	0.75
M3	1
M4	2

- MATERIAL AND FINISHES MUST BE RoHS COMPLIANT
- MATERIAL OR PACKAGING MUST BE MARKED WITH RoHS COMPLIANCE MARKING OR LABEL

MATERIAL:					SCALE
TREATMENT:					1:2
FINISH:					
DRAWN BY:	DATE:	GENERAL ROUGHNESS:	TOLERANCES UNLESS OTHERWISE STATED:			UNIT
E. SCHMIT	2013-10-31	Ra 3.2 n um	DIMENSION:±0,2	ANGLE: ±1°		
TITLE:	ADAPTER COVER RIGHT ASSY					
 grass valley		DOCUMENT NUMBER		FORMAT	SHEET	
		3922 407 6350		A3	1/1	
		RELEASE LEVEL:		110-01	.	

List of Field Replaceable Units:

	3922 407 63501	ADAPTER COVER RIGHT ASSY
Position	Part number	Description
3	3922 400 09173	DUSTCOVER BNC
4	3922 400 11981	RJ45 CAP
5	3922 403 30891	BUSH
746	2522 600 27017	WASH STL ST 3,2X7