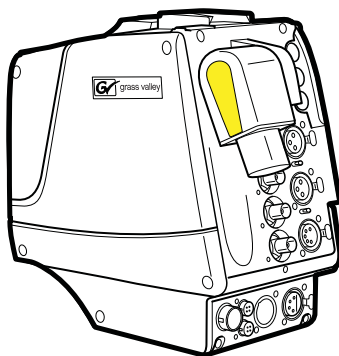


Maintenance Manual

3922 496 32261 July 2015 v4.0



XF Universe Adapter

XF Transmission Adapter

Declaration of Conformity

We, Grass Valley Nederland B.V., Bergschot 69, 4817 PA Breda, The Netherlands, declare under our sole responsibility that this product is in compliance with the following standards:

- EN60065 : Safety
- EN55103-1: EMC (Emission)
- EN55103-2: EMC (Immunity)

following the provisions of:

- a. the Low Voltage directive 2006/95/EC
- b. the EMC directive 2004/108/EC

FCC CLASS A Statement

This product generates, uses, and can radiate radio frequency energy and if not installed and used in accordance with the instructions, may cause interference to radio communications.

It has been tested and found to comply with the limits for a CLASS A digital device pursuant to part 15 of the FCC rules, which are designed to provide reasonable protection against such interference when operated in a commercial environment.

Operation of this product in a residential area is likely to cause interference in which case the user at his own expense will be required to take whatever measures may be required to correct the interference.

Copyright

Copyright Grass Valley Nederland B.V. 2015. Copying of this document and giving it to others, and the use or communication of the contents thereof, are forbidden without express authority. Offenders are liable to the payment of damages. All rights are reserved in the event of the grant of a patent or the registration of a utility model or design. Liable to technical alterations in the course of further development.

Trademarks

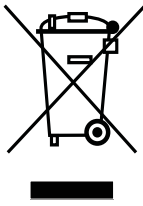
Grass Valley, LDX Series and derivatives are trademarks of Belden Inc. or Grass Valley. All other tradenames referenced are service marks, trademarks, or registered trademarks of their respective companies.

Website

Visit the Grass Valley public website to download the latest user's guide updates and additional information about your broadcast product:

www.grassvalley.com

End-of-life product recycling



Grass Valley's innovation and excellence in product design also extends to the programs we've established to manage the recycling of our products. Grass Valley has developed a comprehensive end-of-life product take back program for recycle or disposal of end-of-life products. Our program meets the requirements of the European Union's WEEE Directive and in the United States from the Environmental Protection Agency, individual state or local agencies.

Grass Valley's end-of-life product take back program assures proper disposal by use of Best Available Technology. This program accepts any Grass Valley branded equipment. Upon request, a Certificate of Recycling or a Certificate of Destruction, depending on the ultimate disposition of the product, can be sent to the requester. Grass Valley will be responsible for all costs associated with recycling and disposal, including freight, however you are responsible for the removal of the equipment from your facility and packing the equipment ready for pickup.

For further information on the Grass Valley product take back system please contact Grass Valley at + 800 80 80 20 20 or +33 1 48 25 20 20 from most other countries. In the US and Canada please call 800-547-8949 or 530-478-4148. Ask to be connected to the EH&S Department. In on, information concerning Grass Valley's environmental policy can be found at: www.grassvalley.com/about/environmental-policy

Important information

This information is intended as a guide for trained and qualified personnel who are aware of the dangers involved in handling potentially hazardous electrical / electronic equipment. It is not intended to contain a complete list of all safety precautions which should be observed by personnel in using this or other electronic equipment.

The installation, maintenance and service of this equipment involves risks both to personnel and equipment and must be performed only by qualified personnel exercising due care.

Personnel engaged in the installation, operation, maintenance or servicing of this equipment are urged to become familiar with First Aid theory and practises.

During installation and operation of this equipment, local building safety and fire protection standards must be observed.

Whenever it is likely that safe operation is impaired, the apparatus must be made inoperative and secured against any unintended operation. The appropriate servicing authority must then be informed. For example, safety is likely to be impaired if the apparatus fails to perform intended function or shows visible damage.

Warnings and Cautions

When performing service, be sure to read and comply with the warning and caution notices appearing in the manuals. Warnings indicate danger that requires correct procedures or practices to prevent death or injury to personnel. Cautions indicate procedures or practices that should be followed to prevent damage or destruction to equipment to property.

Warnings

- THE CURRENTS AND VOLTAGES PRESENT IN THIS EQUIPMENT ARE DANGEROUS. ALL PERSONNEL MUST AT ALL TIMES FOLLOW THE SAFETY REGULATIONS.
- ALWAYS DISCONNECT POWER BEFORE REMOVING COVERS OR PANELS.
- ALWAYS DISCHARGE HIGH VOLTAGE POINTS BEFORE SERVICING.
- NEVER MAKE INTERNAL ADJUSTMENTS, PERFORM MAINTENANCE OR SERVICE WHEN ALONE OR WHEN FATIGUED.
- IN CASE OF AN EMERGENCY ENSURE THAT THE POWER IS DISCONNECTED.
- ANY INTERRUPTION OF THE PROTECTION CONDUCTOR INSIDE OR OUTSIDE THE APPARATUS, OR DISCONNECTION OF THE PROTECTIVE EARTH TERMINAL, IS LIKELY TO MAKE THE APPARATUS DANGEROUS. INTENTIONAL INTERRUPTION IS PROHIBITED.
- USE ONLY FUSES OF THE TYPE AND RATING SPECIFIED.

Cautions

- To prevent risk of overheating, ventilate the product correctly.

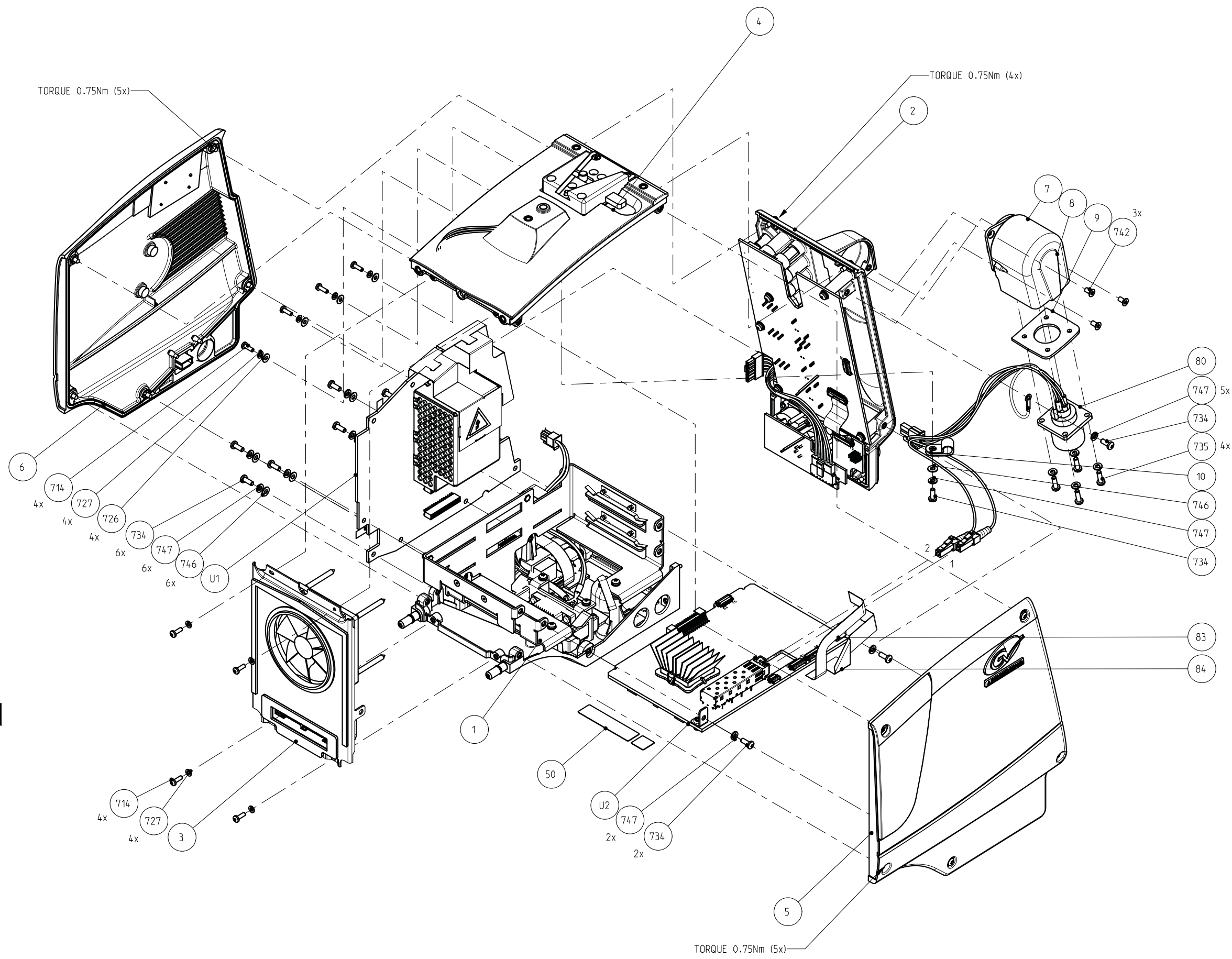
8926 566 01001 XF FIBER LDX ADAPTER, LEMO

List of Field Replacable Units (FRUs):

Pos	Part Number	Description
7	3922 407 58934	ROTARY CONN UNIT ASSY
80	3922 407 52434	LEMO CAMERA ASSEMBLY
83	3922 411 56841	PCB F--- 20P FLEX ANGLED CABLE
84	2422 015 18546	CLB FLEX 30P FFC 0.5 SUMICARD TL=81MM 30V
714	2522 201 08018	PAN SCR STL ST M2,5X8
726	2522 600 27137	WASH STL ST 2,7X6,5
727	2522 613 12063	SPR WASH STL ST 2,6X5,1
734	2522 201 08032	PAN SCR STL ST M3X8
735	2522 201 08033	PAN SCR STL ST M3X10
742	2522 203 04023	CSK SCR STL ST M3X6
747	2522 613 12005	SPR WASH STL ST 3,1X5,7
792	326-00006-01	COMBI SCR PAN STL ST M3X8
U1	3922 406 56901	PCBA POWER BOARD
U2	3922 406 57221	PCBA FIBER TRANSMISSION 10G ADAPTER


Maintenance Manual

THIS DOCUMENT IS THE PROPERTY OF GRASS VALLEY
IT SHALL NOT BE REPRODUCED NOR TRANSMITTED TO A THIRD PARTY WITHOUT PRIOR WRITTEN
CONSENT OF THE COMPANY



TORQUE TABLE	
Tolerances unless otherwise stated: $\pm 10\%$	
Torque unless otherwise stated:	
Thread size	Torque (Nm)
M2	0.5
M2.5	0.75
M3	1
M4	2

MATERIAL AND FINISHES MUST BE RoHS COMPLIANT



grass valley

DOCUMENT NUMBER: SHEET:043-01

8926 566 0100

1

ES

2015-02-05

1

ES

2014-03-25

E. SCHMIT

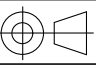
DESCRIPTION:

XF FIBER LDX ADAPTER LEMO

GENERAL ROUGHNESS:
Ra 3.2 um

IF TOLERANCE AND TOLERANCE
TABLE ARE ABSENT THEN APPLY
DIM ± 0.2 ANGLE $\pm 1^\circ$

UNIT:
mm



SCALE:
1:2

FORMAT:
A2

SHEET:
1/1

Rev:	Name:	Date:
.
.
.

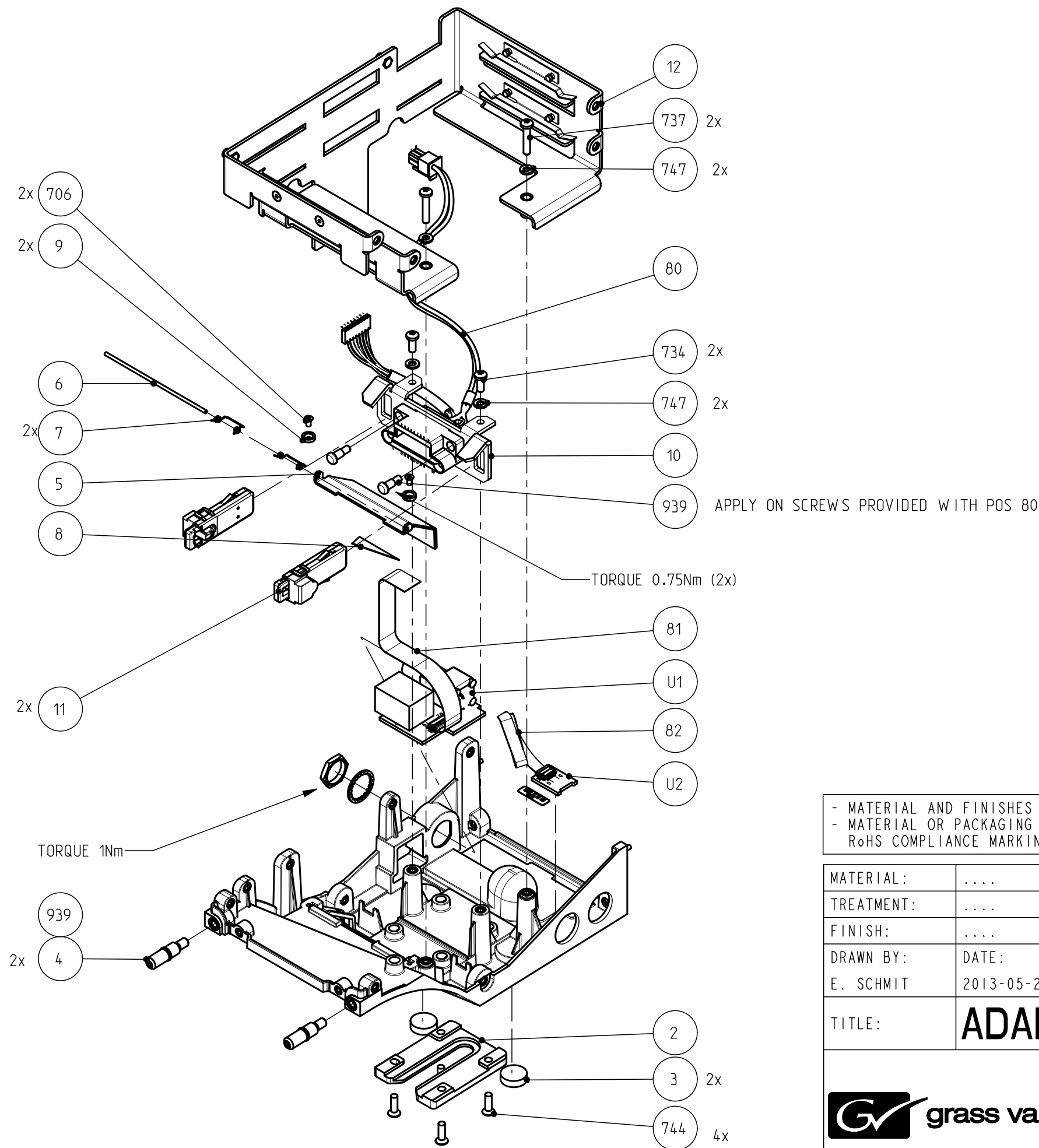
3922 407 63381 ADAPTER BOTTOM PLATE ASSY

List of Field Replacable Units (FRUs):

Pos	Part Number	Description
2	3922 404 23994	V BRACKET LONG
9	2522 700 06045	CSK WASHER STL ST M2
80	3922 407 63611	HOT SHOE CABLE ASSY
81	3922 411 56992	PCB F--- 20P FLEX CABLE
82	2422 015 19425	CLB FLEX 10P FFC 0.5 SUMICARD TL=138MM 30V
734	2522 201 08032	PAN SCR STL ST M3X8
737	2522 201 08036	PAN SCR STL ST M3X16
744	2522 203 04025	CSK SCR STL ST M3X10
747	2522 613 12005	SPR WASH STL ST 3,1X5,7
U1	3922 406 56891	PCBA RIGHT CONNECTOR BRD

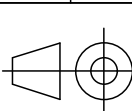

Maintenance Manual

THIS DOCUMENT IS THE PROPERTY OF GRASS VALLEY
IT SHALL NOT BE REPRODUCED NOR TRANSMITTED TO A THIRD PARTY WITHOUT PRIOR WRITTEN
CONSENT OF THE COMPANY



TORQUE TABLE	
Tolerances unless otherwise stated: $\pm 10\%$	
Torque unless otherwise stated:	
Thread size	Torque (Nm)
M2	0.65
M2.5	0.75
M3	1
M4	2

- MATERIAL AND FINISHES MUST BE RoHS COMPLIANT
- MATERIAL OR PACKAGING MUST BE MARKED WITH
RoHS COMPLIANCE MARKING OR LABEL

MATERIAL:				SCALE
TREATMENT:				1:2
FINISH:				
DRAWN BY:	DATE:	GENERAL ROUGHNESS:	TOLERANCES UNLESS OTHERWISE STATED:		UNIT
E. SCHMIT	2013-05-29	Ra 3.2 n um	DIMENSION:±0,2	ANGLE: ±1°	
TITLE:	ADAPTER BOTTOM PLATE ASSY				
 grass valley		DOCUMENT NUMBER		FORMAT	SHEET
		3922 407 6338		A3	1/1
		RELEASE LEVEL:		110-01	120

3922 407 63411 ADAPTER BACK PANEL ASSY

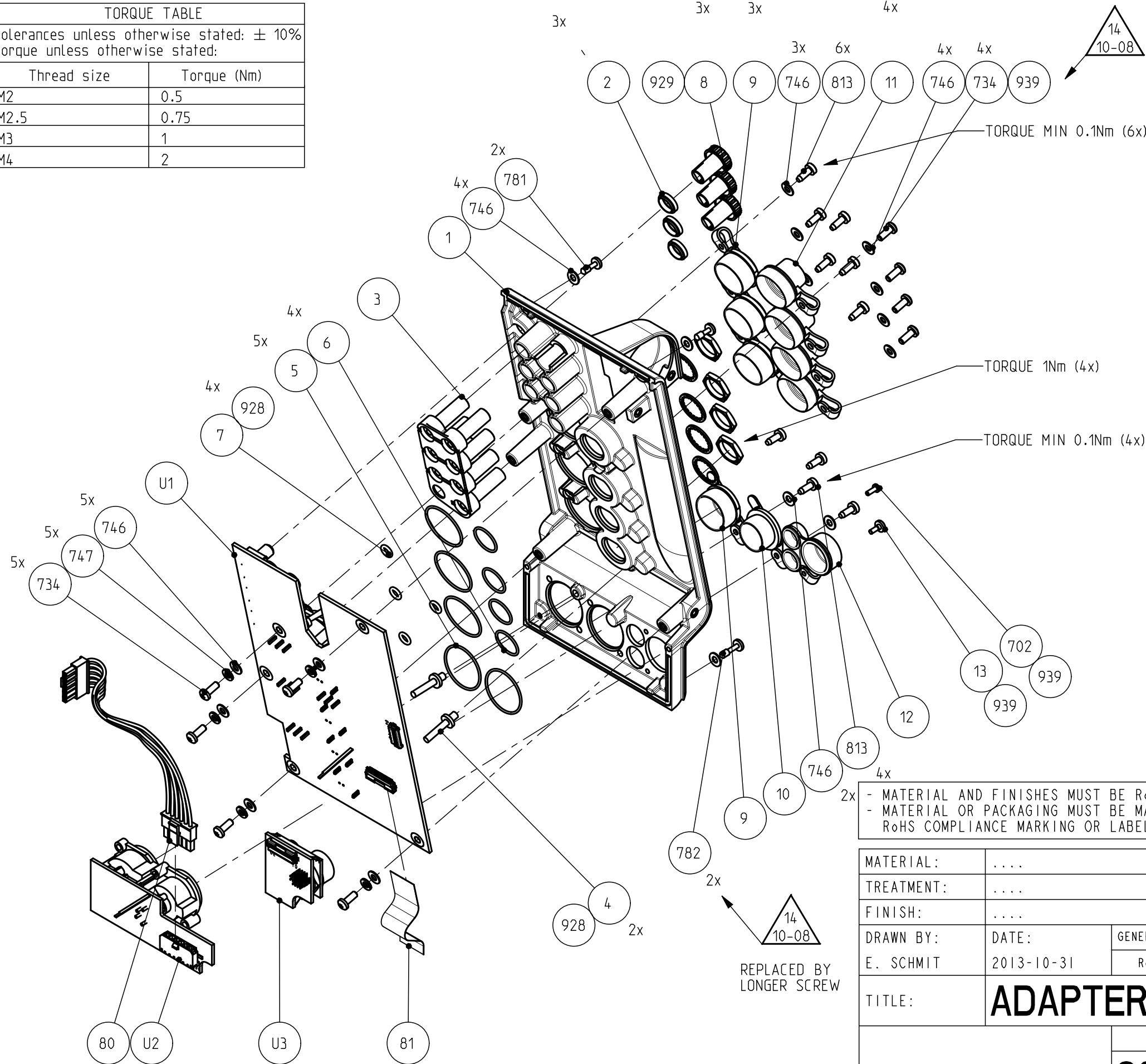
List of Field Replacable Units (FRUs):

Pos	Part Number	Description
5	3922 203 00318	O-RING 19.5 x 1 VITON 51414 BLACK
6	3922 203 00317	O-RING 11 x 1 VITON 51414 BLACK
7	3922 203 00316	O-RING 4 x 1.5 VITON 51414 BLACK
8	3922 400 08412	LONG KNOB
9	3922 400 11991	XLR FEM CAP
10	3922 400 12001	XLR MALE CAP
11	3922 400 11972	BNC CAP
12	3922 400 12011	AUX CAP
13	506-00005-01	M2X6 SHOULDER SCREW
80	3922 407 63591	6P POWER CABLE ASSY
81	3922 205 00006	CLB FLEX 30P FFC 0.5 SUMICARD TL=56MM 30V
702	2522 201 08004	PAN SCR STL ST M2X6
734	2522 201 08032	PAN SCR STL ST M3X8
746	2522 600 27017	WASH STL ST 3,2X7
781	2522 200 03024	PAN CAP SCR STL.ST M3x10
782	2522 200 03025	PAN CAP SCR STL.ST M3x12
792	326-00006-01	COMBI SCR PAN STL ST M3X8
813	2522 202 07006	PAN TAP SCR F ST T8 2,9X8
U1	3922 406 56911	PCBA BACKPANEL AUDIO
U2	3922 406 56871	PCBA POWER CONNECTOR BRD
U3	3922 406 56881	PCBA AUX CONNECTOR BRD

Maintenance Manual

THIS DOCUMENT IS THE PROPERTY OF GRASS VALLEY
IT SHALL NOT BE REPRODUCED NOR TRANSMITTED TO A THIRD PARTY WITHOUT PRIOR WRITTEN
CONSENT OF THE COMPANY

TORQUE TABLE	
Tolerances unless otherwise stated: $\pm 10\%$	
Torque unless otherwise stated:	
Thread size	Torque (Nm)
M2	0.5
M2.5	0.75
M3	1
M4	2



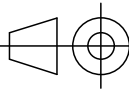


ADDED RINGS TO SECURE BNC CAPS

TORQUE MIN 0.1Nm (6x)

TORQUE 1Nm (4x)

TORQUE MIN 0.1Nm (4x)

- MATERIAL AND FINISHES MUST BE RoHS COMPLIANT
- MATERIAL OR PACKAGING MUST BE MARKED WITH
RoHS COMPLIANCE MARKING OR LABEL

MATERIAL:					SCALE
TREATMENT:					1:2
FINISH:					
DRAWN BY:	DATE:	GENERAL ROUGHNESS:	TOLERANCES UNLESS OTHERWISE STATED:			UNIT
E. SCHMIT	2013-10-31	Ra 3.2 n um	DIMENSION:±	ANGLE: ±°		mm
TITLE:	ADAPTER BACK PANEL ASSY					
		DOCUMENT NUMBER		FORMAT	SHEET	
		3922 407 6341		A3	1/1	
		RELEASE LEVEL:	...	110-01	120	

3922 407 63541 ADAPTER DOCK PLATE ASSY

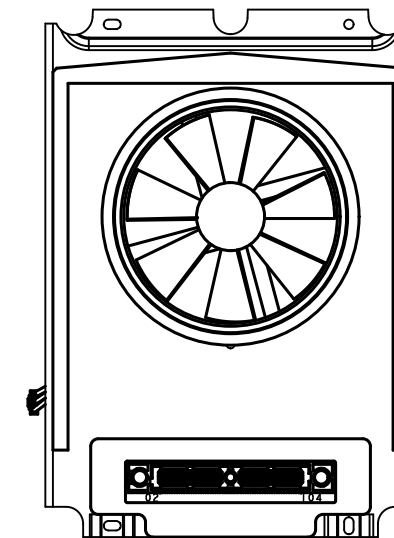
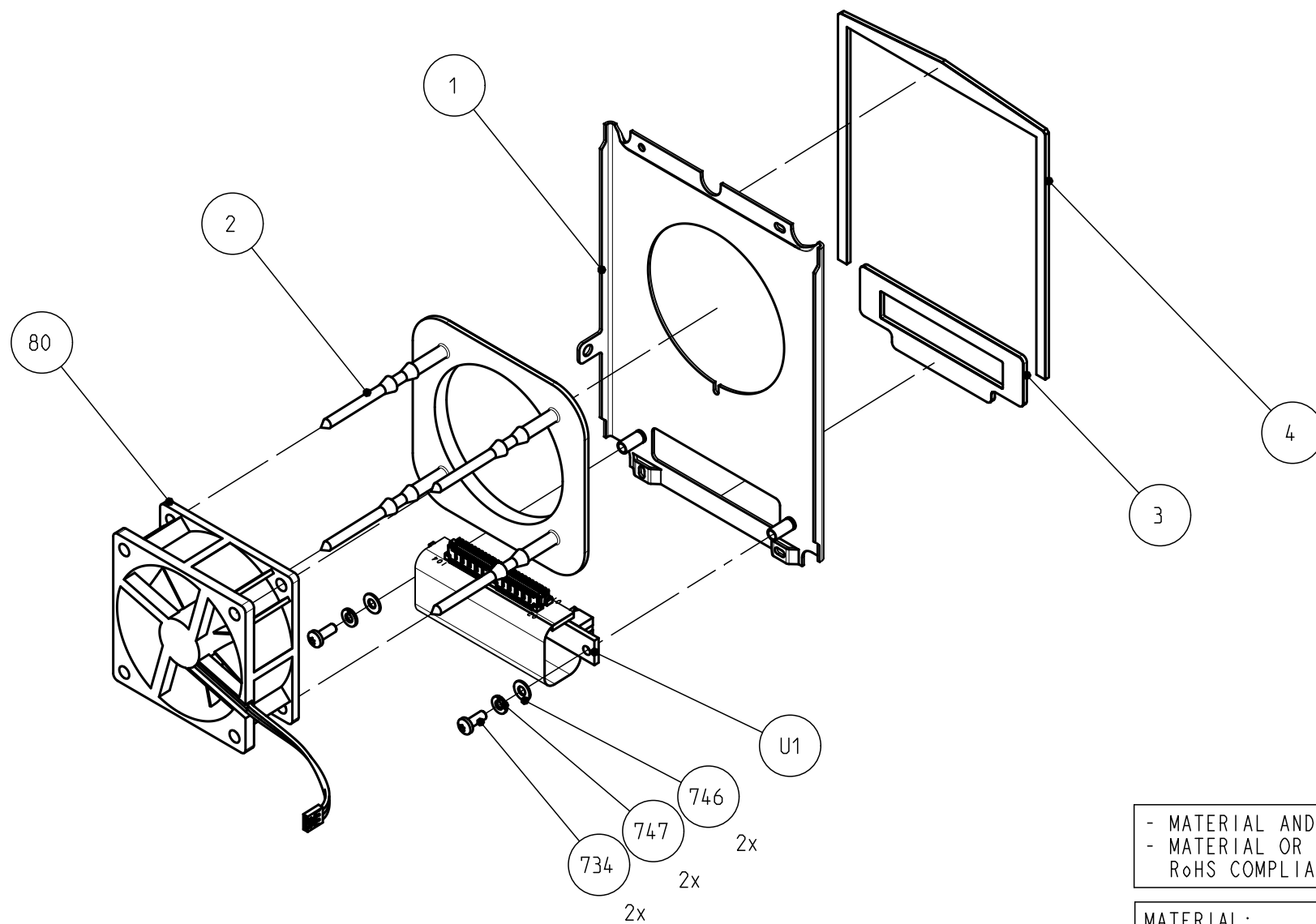
List of Field Replacable Units (FRUs):

Pos	Part Number	Description
2	3922 400 11134	FANMOUNTING DAMPER
80	3922 407 57891	FAN ASSY HDDT ADAPTOR
792	326-00006-01	COMBI SCR PAN STL ST M3X8
U1	3922 406 56851	SAMTEC FLEX

Maintenance Manual

THIS DOCUMENT IS THE PROPERTY OF GRASS VALLEY
IT SHALL NOT BE REPRODUCED NOR TRANSMITTED TO A THIRD PARTY WITHOUT PRIOR WRITTEN
CONSENT OF THE COMPANY

TORQUE TABLE	
Tolerances unless otherwise stated: $\pm 10\%$	
Torque unless otherwise stated:	
Thread size	Torque (Nm)
M2	0.65
M2.5	0.75
M3	1
M4	2



POSITION SEALS

- MATERIAL AND FINISHES MUST BE RoHS COMPLIANT
- MATERIAL OR PACKAGING MUST BE MARKED WITH RoHS COMPLIANCE MARKING OR LABEL

MATERIAL:			SCALE
TREATMENT:			1:2
FINISH:			UNIT
DRAWN BY:	DATE:			mm
E. SCHMIT	2013-10-31	GENERAL ROUGHNESS:	TOLERANCES UNLESS OTHERWISE STATED:	
		Ra 3.2 n um	DIMENSION: $\pm 0,2$ ANGLE: $\pm 1^\circ$	
TITLE:	ADAPTER DOCK PLATE ASSY			
		DOCUMENT NUMBER	FORMAT	SHEET
		3922 407 6354	A3	1/1
		RELEASE LEVEL:	110-01	.

3922 407 63441 ADAPTER TOP PLATE ASSY

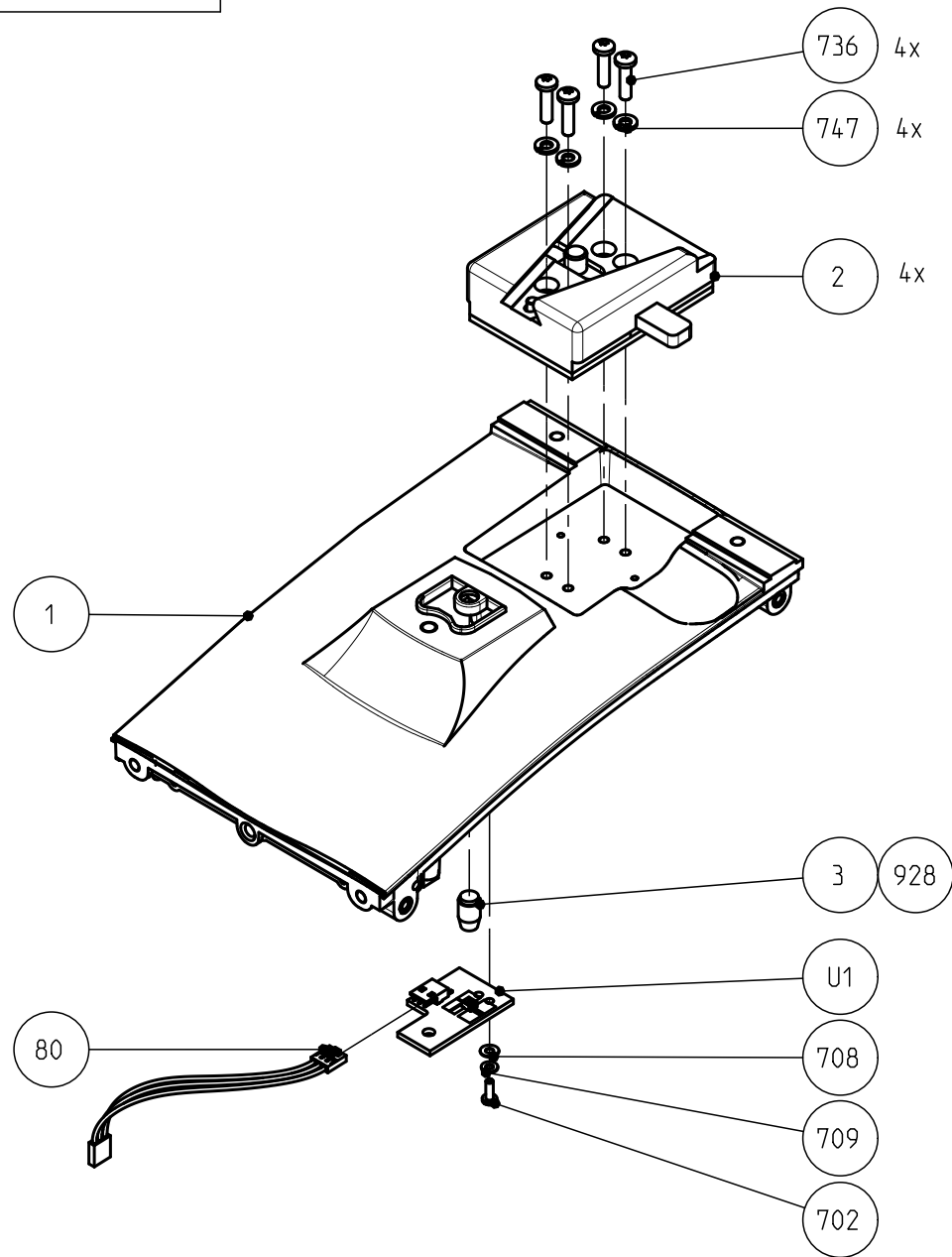
List of Field Replacable Units (FRUs):

Pos	Part Number	Description
1	3922 407 24083	TOPPLATE TRIAX PAINTED
2	3922 407 20733	QUICK MOUNT BLOCK ASSY
4	2522 201 08004	PAN SCR STL ST M2X6
5	2522 600 27151	WASH STL ST 2,2X5
6	2522 201 08034	PAN SCR STL ST M3X12
7	2522 613 12005	SPR WASH STL ST 3,1X5,7
8	3922 407 63601	3P TALLY CABLE ASSY
U1	3922 406 56861	TALLY LIGHT BRD

Maintenance Manual

THIS DOCUMENT IS THE PROPERTY OF GRASS VALLEY
IT SHALL NOT BE REPRODUCED NOR TRANSMITTED TO A THIRD PARTY WITHOUT PRIOR WRITTEN
CONSENT OF THE COMPANY

TORQUE TABLE	
Tolerances unless otherwise stated: $\pm 10\%$	
Torque unless otherwise stated:	
Thread size	Torque (Nm)
M2	0.65
M2.5	0.75
M3	1
M4	2



- MATERIAL AND FINISHES MUST BE RoHS COMPLIANT
- MATERIAL OR PACKAGING MUST BE MARKED WITH
RoHS COMPLIANCE MARKING OR LABEL

.
.
.
.
1	ES	2015-02-05
Rev	Name	Date

MATERIAL:			SCALE
TREATMENT:			1:2
FINISH:			
DRAWN BY:	DATE:	GENERAL ROUGHNESS:	TOLERANCES UNLESS OTHERWISE STATED:	UNIT
E. SCHMIT	2013-10-31	Ra 3.2 n um	DIMENSION: $\pm 0,2$ ANGLE: $\pm 1^\circ$	mm

TITLE:	ADAPTER TOP PLATE ASSY			
--------	------------------------	--	--	--

	DOCUMENT NUMBER		FORMAT	SHEET
	3922 407 6344		A3	1/1
	RELEASE LEVEL:		110-01	120

3922 407 63471 ADAPTER COVER LEFT ASSY

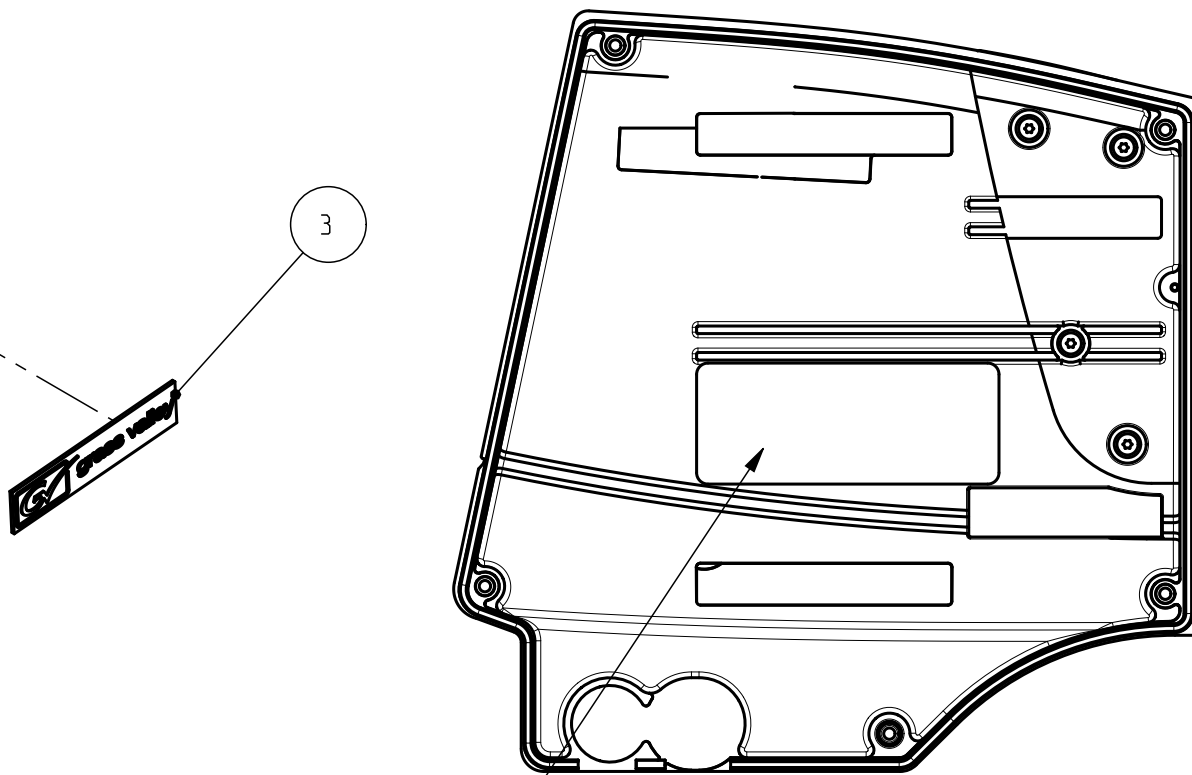
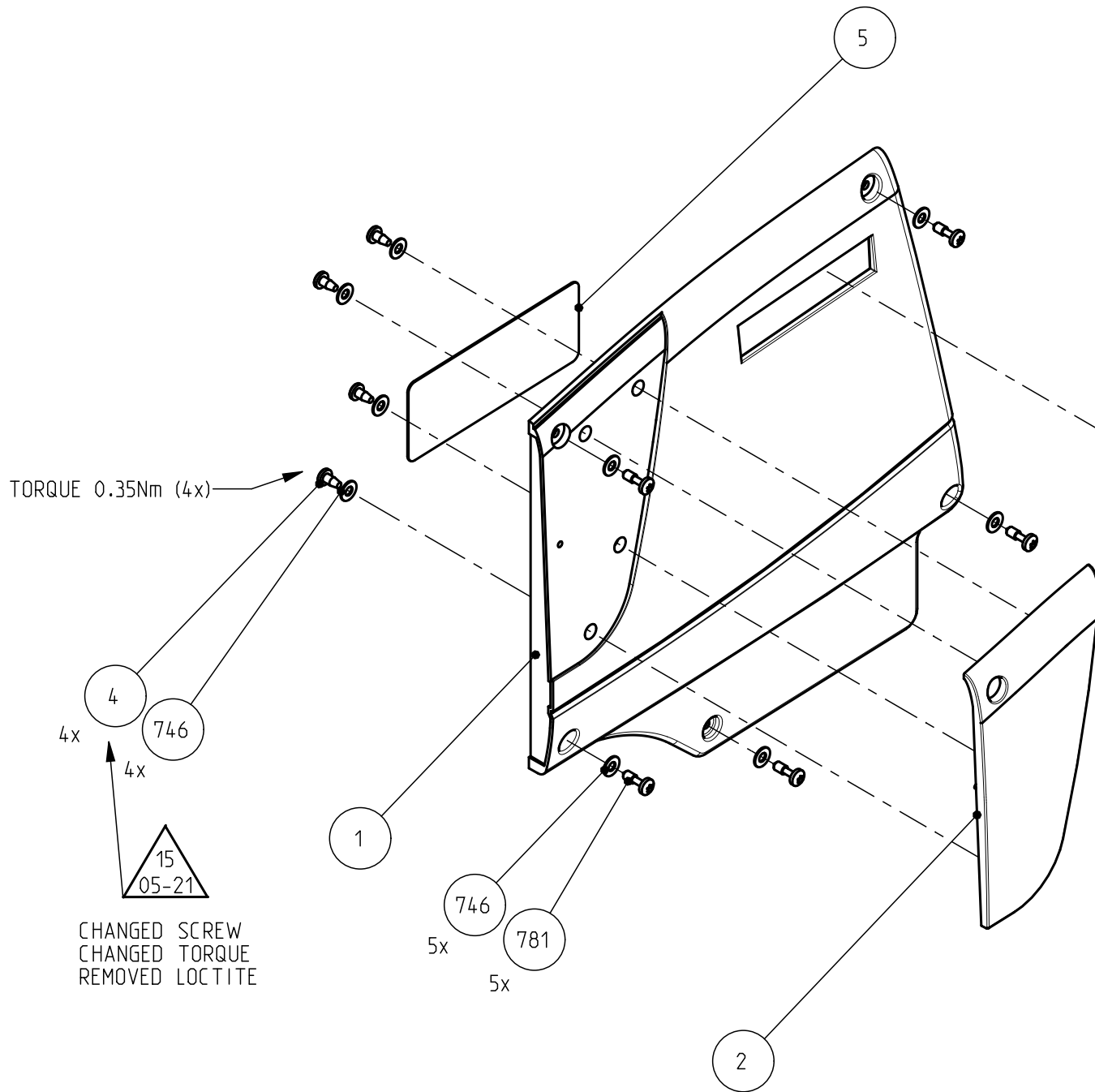
List of Field Replacable Units (FRUs):

Pos	Part Number	Description
746	2522 600 27017	WASH STL ST 3,2X7
781	2522 200 03024	PAN CAP SCR STL.ST M3x10

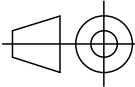

Maintenance Manual

THIS DOCUMENT IS THE PROPERTY OF GRASS VALLEY
IT SHALL NOT BE REPRODUCED NOR TRANSMITTED TO A THIRD PARTY WITHOUT PRIOR WRITTEN
CONSENT OF THE COMPANY

TORQUE TABLE	
Tolerances unless otherwise stated: $\pm 10\%$	
Torque unless otherwise stated:	
Thread size	Torque (Nm)
M2	0.65
M2.5	0.75
M3	1
M4	2



- MATERIAL AND FINISHES MUST BE RoHS COMPLIANT
- MATERIAL OR PACKAGING MUST BE MARKED WITH RoHS COMPLIANCE MARKING OR LABEL

MATERIAL:				SCALE
TREATMENT:				1:2
FINISH:				
DRAWN BY:	DATE:	GENERAL ROUGHNESS:	TOLERANCES UNLESS OTHERWISE STATED:		UNIT
E. SCHMIT	2013-10-31	Ra 3.2 n um	DIMENSION:±0,2	ANGLE: ±1°	
TITLE:	ADAPTER COVER LEFT ASSY				
 grass valley		DOCUMENT NUMBER		FORMAT	SHEET
		3922 407 6347		A3	1/1
		RELEASE LEVEL:		110-01	120

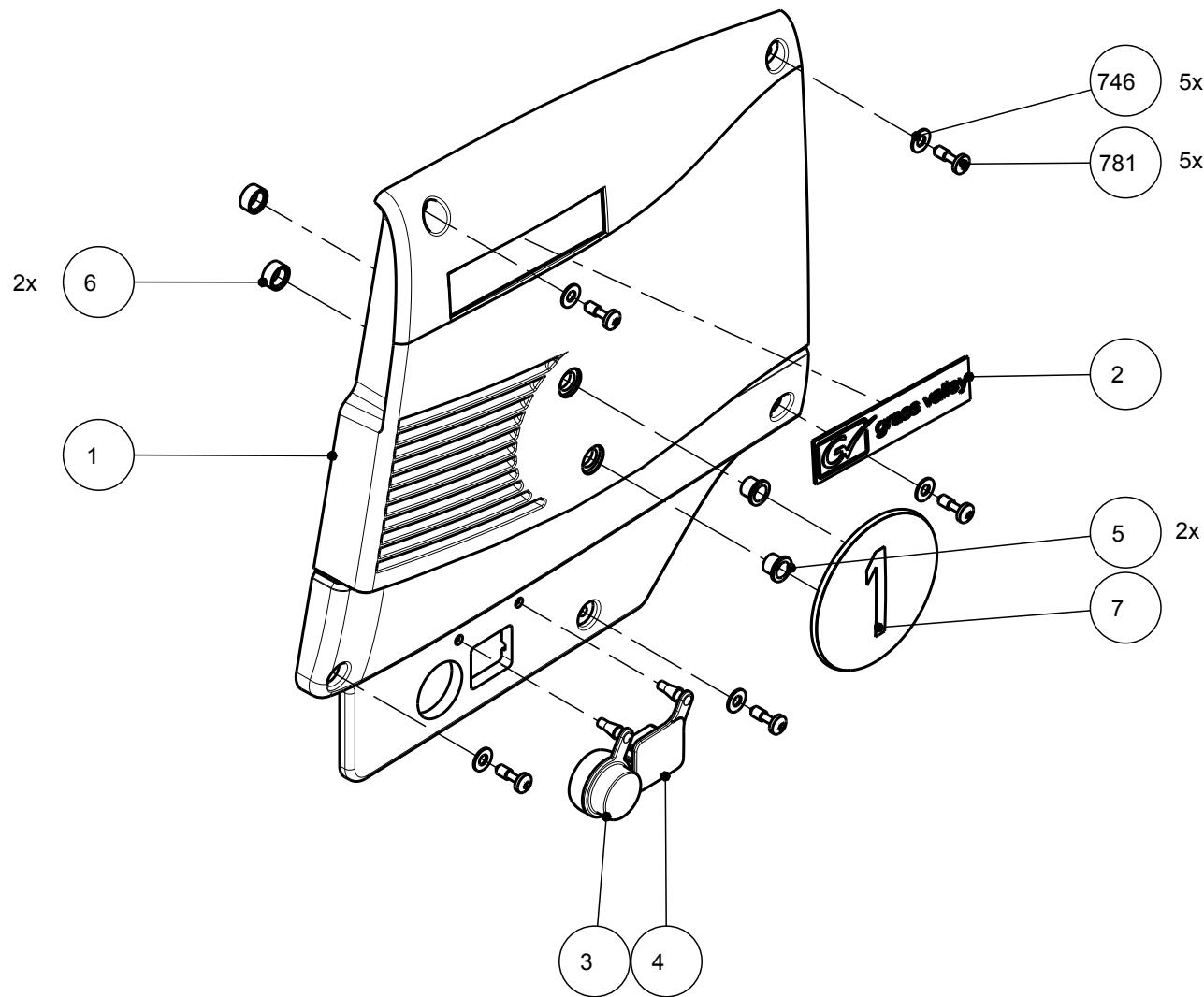
3922 407 63501 ADAPTER COVER RIGHT ASSY

List of Field Replacable Units (FRUs):

Pos	Part Number	Description
3	516-00001-02	BNC CAP
4	3922 400 11982	RJ45 CAP
5	3922 403 30891	BUSH
746	2522 600 27017	WASH STL ST 3,2X7
781	2522 200 03024	PAN CAP SCR STL.ST M3x10

Maintenance Manual

THIS DOCUMENT IS THE PROPERTY OF GRASS VALLEY
IT SHALL NOT BE REPRODUCED NOR TRANSMITTED TO A THIRD PARTY WITHOUT PRIOR WRITTEN
CONSENT OF THE COMPANY



TORQUE TABLE	
Tolerances unless otherwise stated: $\pm 10\%$	
Torque unless otherwise stated:	
Thread size	Torque (Nm)
M2	0.65
M2.5	0.75
M3	1
M4	2

- MATERIAL AND FINISHES MUST BE RoHS COMPLIANT
- MATERIAL OR PACKAGING MUST BE MARKED WITH
RoHS COMPLIANCE MARKING OR LABEL

MATERIAL:			SCALE
TREATMENT:			1:2
FINISH:			
DRAWN BY:	DATE:	GENERAL ROUGHNESS	TOLERANCES UNLESS OTHERWISE STATED:	UNIT
E. SCHMIT	2013-10-31	Ra 3.2 n um	DIMENSION: ± 0.2 ANGLE: $\pm 1^\circ$	mm
TITLE:	ADAPTER COVER RIGHT ASSY			
		DOCUMENT NUMBER	FORMAT	SHEET
		3922 407 6350	A3	1/1
		RELEASE LEVEL:	110-01	.