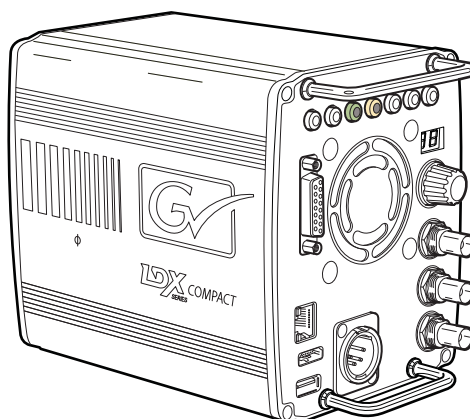


Maintenance Manual

3922 496 32181 November 2014 v2.0



LDX Compact Series

Software Upgradable Camera Platform

Declaration of Conformity

We, Grass Valley Nederland B.V., Kapittelweg 10, 4827 HG Breda, The Netherlands, declare under our sole responsibility that this product is in compliance with the following standards:

- EN60065 : Safety
- EN55103-1: EMC (Emission)
- EN55103-2: EMC (Immunity)

following the provisions of:

- a. the Low Voltage directive 2006/95/EC
- b. the EMC directive 2004/108/EC

FCC CLASS A Statement

This product generates, uses, and can radiate radio frequency energy and if not installed and used in accordance with the instructions, may cause interference to radio communications.

It has been tested and found to comply with the limits for a CLASS A digital device pursuant to part 15 of the FCC rules, which are designed to provide reasonable protection against such interference when operated in a commercial environment.

Operation of this product in a residential area is likely to cause interference in which case the user at his own expense will be required to take whatever measures may be required to correct the interference.

Copyright

Copyright Grass Valley Nederland B.V. 2014. Copying of this document and giving it to others, and the use or communication of the contents thereof, are forbidden without express authority. Offenders are liable to the payment of damages. All rights are reserved in the event of the grant of a patent or the registration of a utility model or design. Liable to technical alterations in the course of further development.

Trademarks

Grass Valley, LDX Series and derivatives are trademarks of Belden Inc. or Grass Valley. All other tradenames referenced are service marks, trademarks, or registered trademarks of their respective companies.

Website

Visit the Grass Valley public website to download the latest user's guide updates and additional information about your broadcast product:

www.grassvalley.com

End-of-life product recycling



Grass Valley's innovation and excellence in product design also extends to the programs we've established to manage the recycling of our products. Grass Valley has developed a comprehensive end-of-life product take back program for recycle or disposal of end-of-life products. Our program meets the requirements of the European Union's WEEE Directive and in the United States from the Environmental Protection Agency, individual state or local agencies.

Grass Valley's end-of-life product take back program assures proper disposal by use of Best Available Technology. This program accepts any Grass Valley branded equipment. Upon request, a Certificate of Recycling or a Certificate of Destruction, depending on the ultimate disposition of the product, can be sent to the requester. Grass Valley will be responsible for all costs associated with recycling and disposal, including freight, however you are responsible for the removal of the equipment from your facility and packing the equipment ready for pickup.

For further information on the Grass Valley product take back system please contact Grass Valley at + 800 80 80 20 20 or +33 1 48 25 20 20 from most other countries. In the US and Canada please call 800-547-8949 or 530-478-4148. Ask to be connected to the EH&S Department. In on, information concerning Grass Valley's environmental policy can be found at: www.grassvalley.com/about/environmental-policy

Grass Valley website

Visit the Grass Valley public website to download the latest user's guide updates and additional information about your broadcast product:

www.grassvalley.com

Important information

This information is intended as a guide for trained and qualified personnel who are aware of the dangers involved in handling potentially hazardous electrical / electronic equipment. It is not intended to contain a complete list of all safety precautions which should be observed by personnel in using this or other electronic equipment.

The installation, maintenance and service of this equipment involves risks both to personnel and equipment and must be performed only by qualified personnel exercising due care.

Personnel engaged in the installation, operation, maintenance or servicing of this equipment are urged to become familiar with First Aid theory and practises.

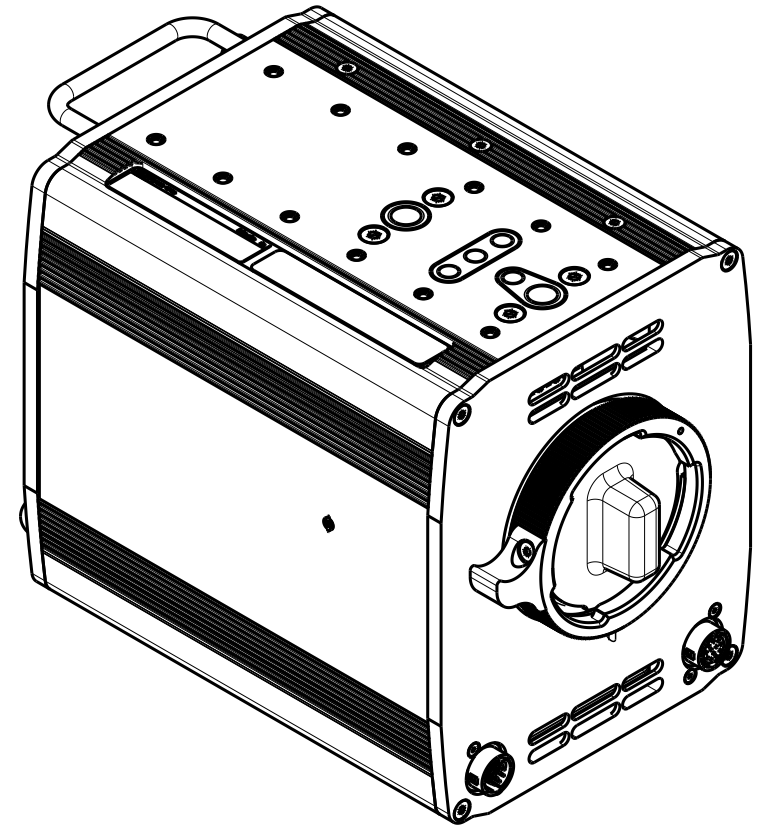
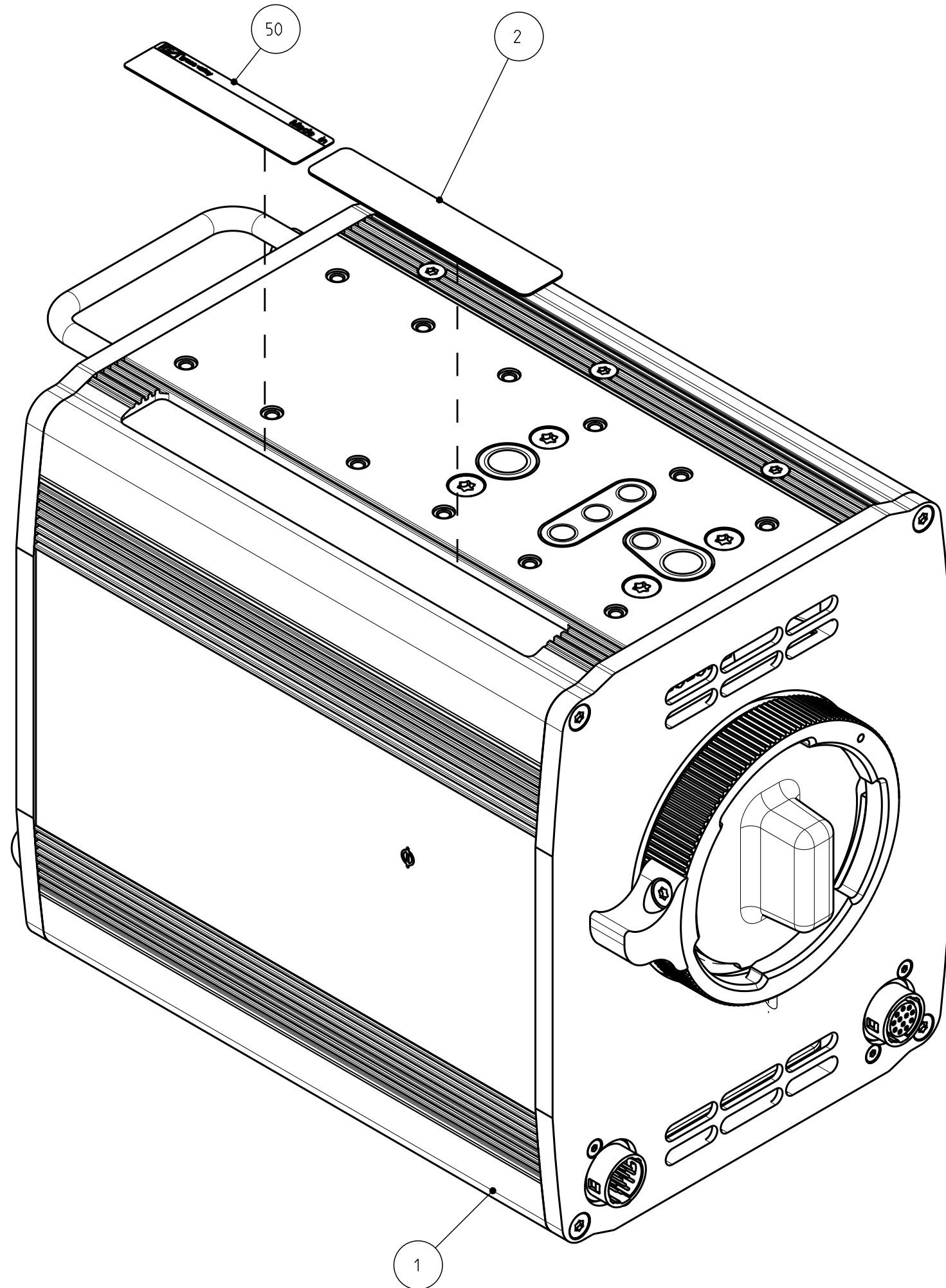
During installation and operation of this equipment, local building safety and fire protection standards must be observed.

Whenever it is likely that safe operation is impaired, the apparatus must be made inoperative and secured against any unintended operation. The appropriate servicing authority must then be informed. For example, safety is likely to be impaired if the apparatus fails to perform intended function or shows visible damage.

Warnings

When performing service, be sure to read and comply with the warning notices appearing in the manuals. Warnings indicate danger that requires correct procedures or practices to prevent death or injury to personnel.


- THE CURRENTS AND VOLTAGES PRESENT IN THIS EQUIPMENT ARE DANGEROUS. ALL PERSONNEL MUST AT ALL TIMES FOLLOW THE SAFETY REGULATIONS.
- ALWAYS DISCONNECT POWER BEFORE REMOVING COVERS OR PANELS.
- NEVER MAKE INTERNAL ADJUSTMENTS, PERFORM MAINTENANCE OR SERVICE WHEN ALONE OR WHEN FATIGUED.
- IN CASE OF AN EMERGENCY ENSURE THAT THE POWER IS DISCONNECTED.



ALSO VALID FOR:

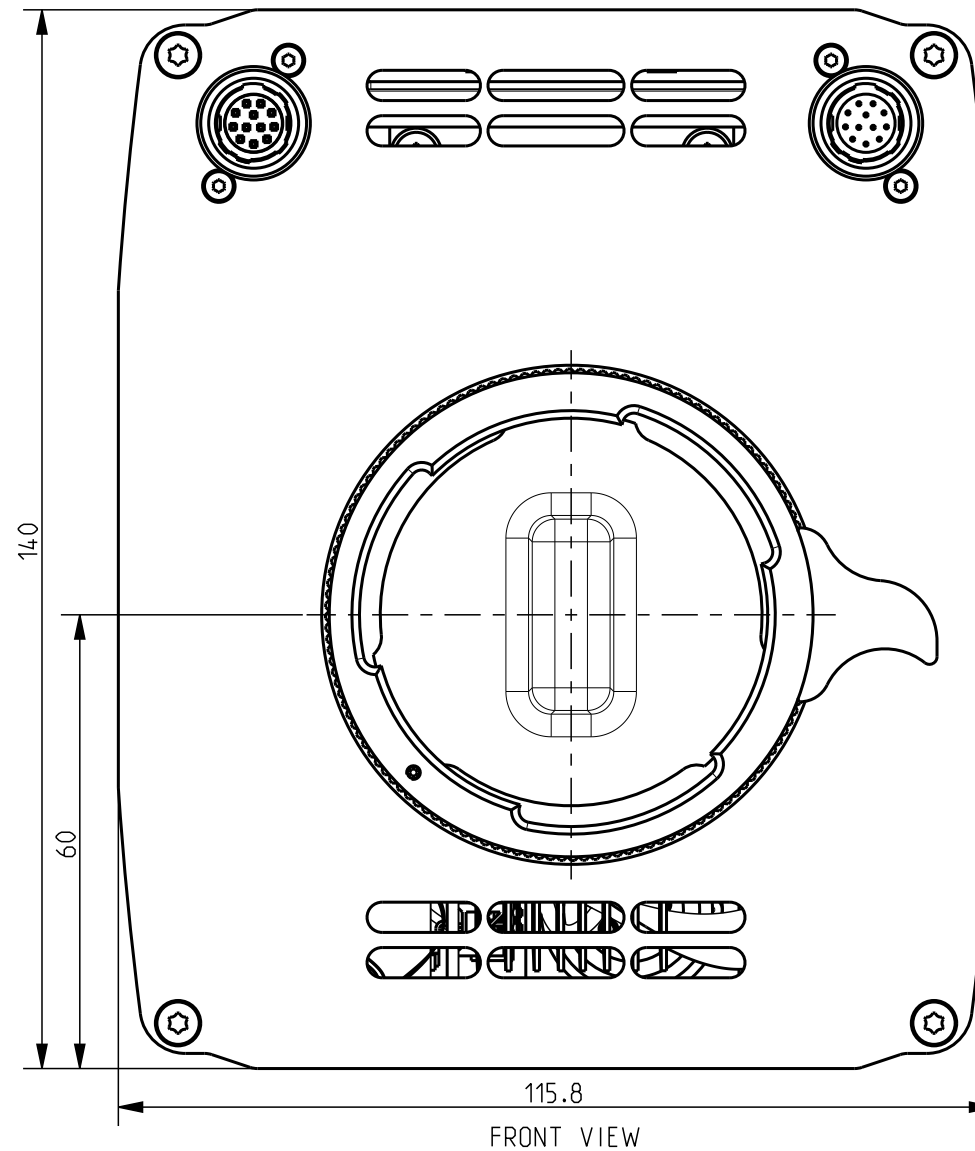
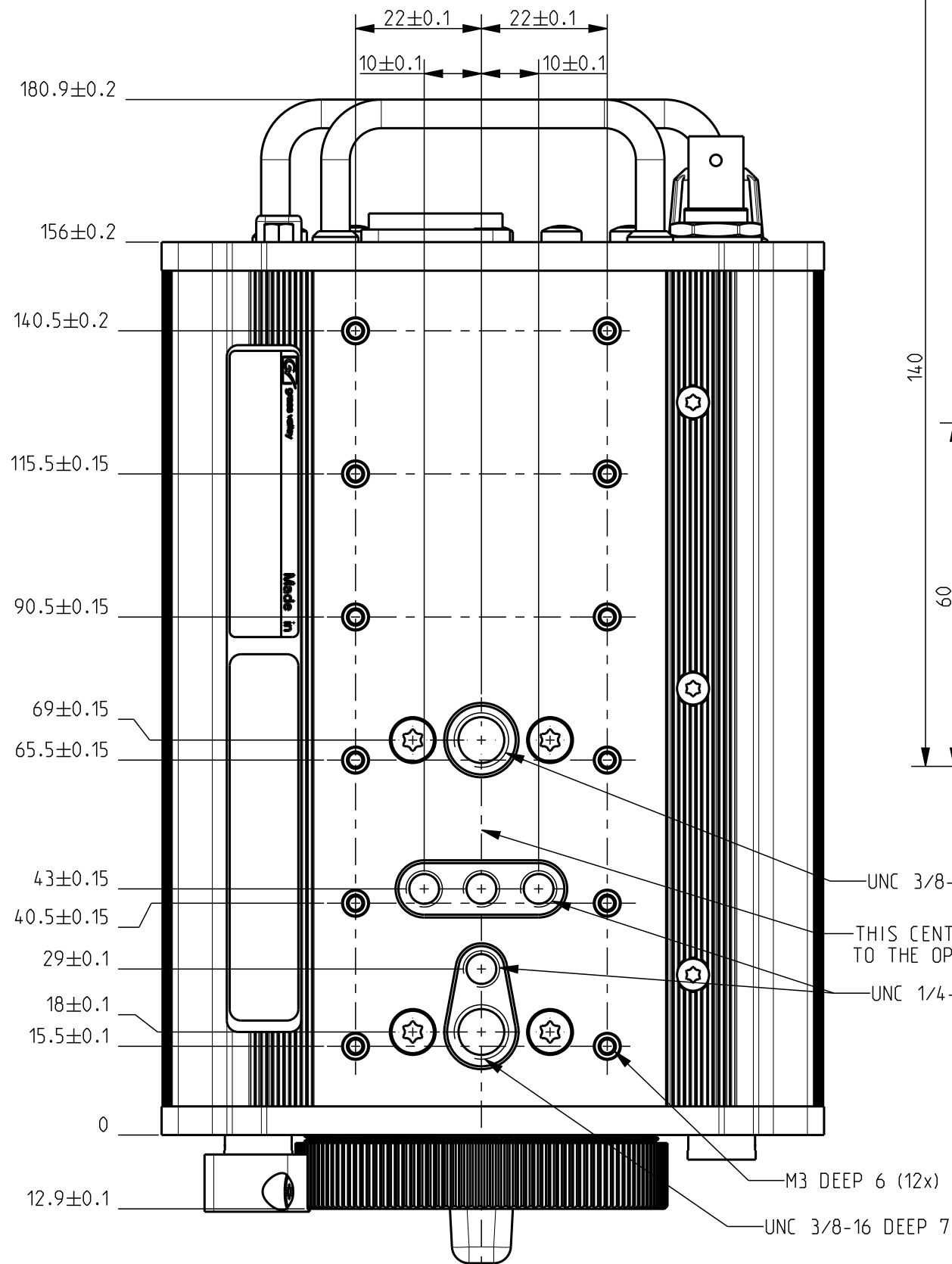
8926 300 50001
8926 300 51001
8926 310 50001
8926 901 50001
8926 902 50001

- MATERIAL AND FINISHES MUST BE RoHS COMPLIANT
- MATERIAL OR PACKAGING MUST BE MARKED WITH RoHS COMPLIANCE MARKING OR LABEL

MATERIAL:			Rev	Name	Date
TREATMENT:			1		
FINISH:					
DRAWN BY:	DATE:	GENERAL ROUGHNESS:	TOLERANCES UNLESS OTHERWISE STATED:			
M. de Waal	2013-12-20	Ra 3.2 n um	DIMENSION:±0,2	ANGLE:	±1°	
TITLE:	LDX C80					
		DOCUMENT NUMBER		FORMAT	SHEET	
		8926 XXX 5X001		A3	1/2	
		RELEASE LEVEL: ...		110-01		

THIS DOCUMENT IS THE PROPERTY OF GRASS VALLEY
IT SHALL NOT BE REPRODUCED NOR TRANSMITTED TO A THIRD PARTY WITHOUT PRIOR WRITTEN
CONSENT OF THE COMPANY

OUTLINE DIMENSIONS AND HOLE PATTERNS



- MATERIAL AND FINISHES MUST BE RoHS COMPLIANT
- MATERIAL OR PACKAGING MUST BE MARKED WITH RoHS COMPLIANCE MARKING OR LABEL

MATERIAL:	Rev	Name	Date
TREATMENT:	1		
FINISH:			
DRAWN BY:	DATE:	GENERAL ROUGHNESS:	TOLERANCES UNLESS OTHERWISE STATED:	UNIT
M. de Waal	2013-12-20	Ra 3.2 n um	DIMENSION:±0,2 ANGLE: ±1°	mm
TITLE:	LDX C80			
DOCUMENT NUMBER		FORMAT	SHEET	
8926 XXX 5X001		A3	2/2	
RELEASE LEVEL:		110-01		

FOR REFERENCE ONLY.

THIS DOCUMENT IS THE PROPERTY OF GRASS VALLEY
IT SHALL NOT BE REPRODUCED NOR TRANSMITTED TO A THIRD PARTY WITHOUT PRIOR WRITTEN
CONSENT OF THE COMPANY

TO X202 ON 3922 406 5730
(LEFT COVER BOARD)

TO X361 ON 3922 406 5596
(RIGHT PROCESSOR BOARD)

TO X371 ON 3922 406 5596
(RIGHT PROCESSOR BOARD)

TOP:
TO X350 ON 3922 406 5596
(PCBA RIGHT PROCESSOR BOARD)

MIDDLE:
TO X360 ON 3922 406 5596
(PCBA RIGHT PROCESSOR BOARD)

BOTTOM:
TO X370 ON 3922 406 5596
(PCBA RIGHT PROCESSOR BOARD)

290 SEE DRAWING TO THE RIGHT HAND
SIDE FOR CABLE ROUTING AND FIXING

TO X351 ON 3922 406 5596
(RIGHT PROCESSOR BOARD)

TO X050 ON 3922 406 5601
(XENSIUM-FT SENSORBOARD)
- TOP SENSOR -

TO X050 ON 3922 406 5601
(XENSIUM-FT SENSORBOARD)
- MIDDLE SENSOR -

TO X050 ON 3922 406 5601
(XENSIUM-FT SENSORBOARD)
- BOTTOM SENSOR -

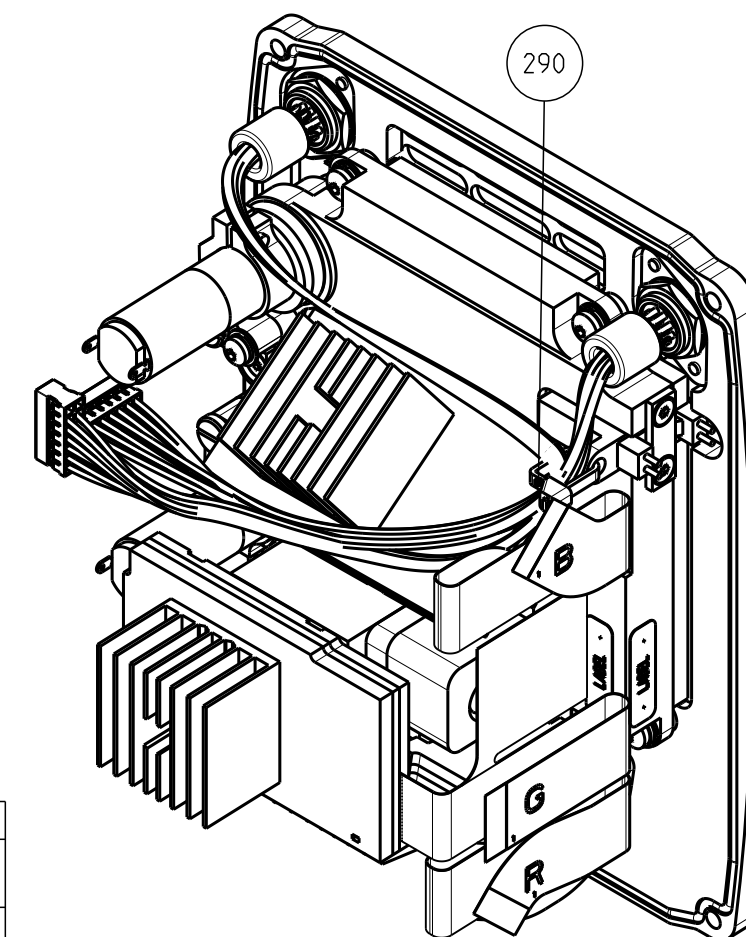
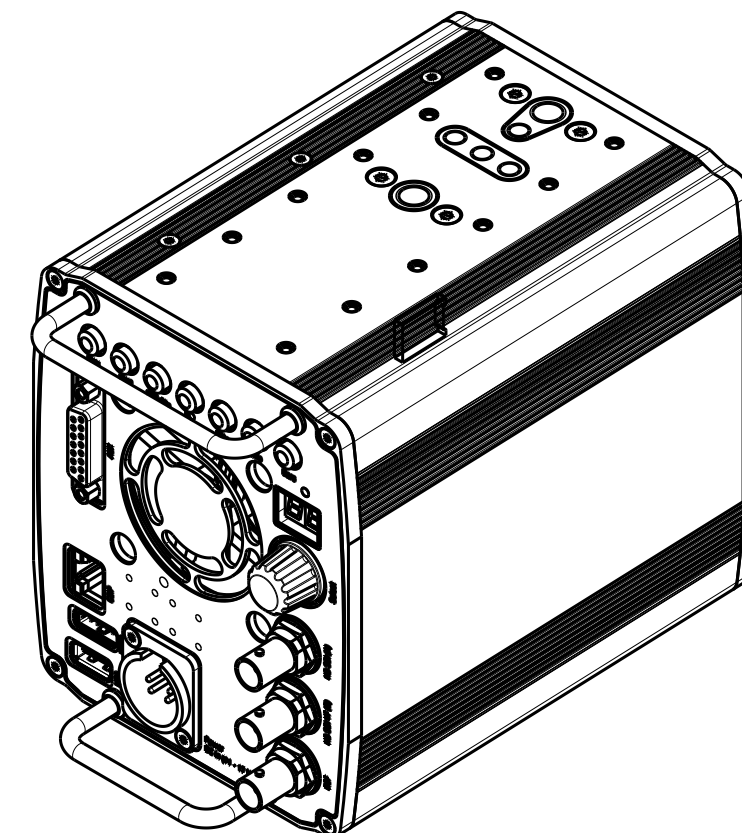
IT IS ALLOWED TO SEPERATE
THIS FLEX CABLE INTO 3 FLEX CABLES

TO X209 ON LEFT COVER BOARD
(3922 406 5730)

TO X208 ON LEFT COVER BOARD
(3922 406 5730)


TO X204 ON 3922 406 5730
(LEFT COVER BOARD)

SECURE WITH POS 739 (PART OF 3922 407 6403, FRONT ASSY)
THEN:
TO X203 ON 3922 406 5730
(LEFT COVER BOARD)



TORQUE TABLE	
Tolerances unless otherwise stated: $\pm 10\%$ Torque unless otherwise stated:	
Thread size	Torque (Nm)
M2	0.65
M2.5	0.75
M3	1
M4	2

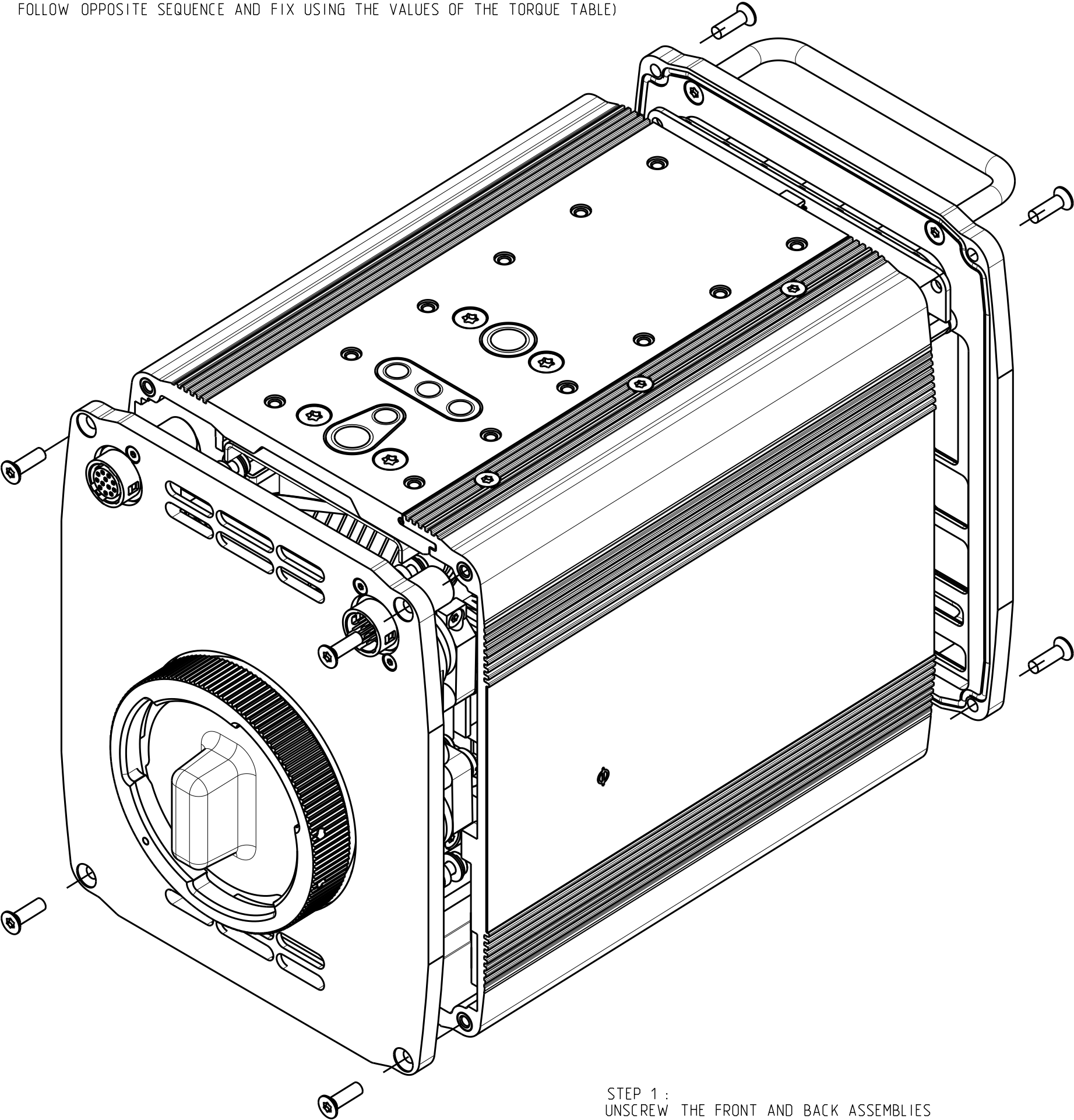
- MATERIAL AND FINISHES MUST BE RoHS COMPLIANT
- MATERIAL OR PACKAGING MUST BE MARKED WITH
RoHS COMPLIANCE MARKING OR LABEL

MATERIAL:	<div>Rev 1</div> <div>Name</div> <div>Date</div>		<div>SCALE</div> <div>4:5</div>	
TREATMENT:				
FINISH:	<div>UNIT</div> <div>mm</div>			
DRAWN BY:	DATE:				
M.de Waal	2013-12-20	Ra 3.2 μ m	DIMENSION: ± 0.2	ANGLE: $\pm 1^\circ$	
TITLE:		LDX GNDLS COMPACT			
<div> grass valley</div>		DOCUMENT NUMBER		FORMAT	SHEET
		3922 407 6400		A2	1/2
		RELEASE LEVEL:	...	110-01	.

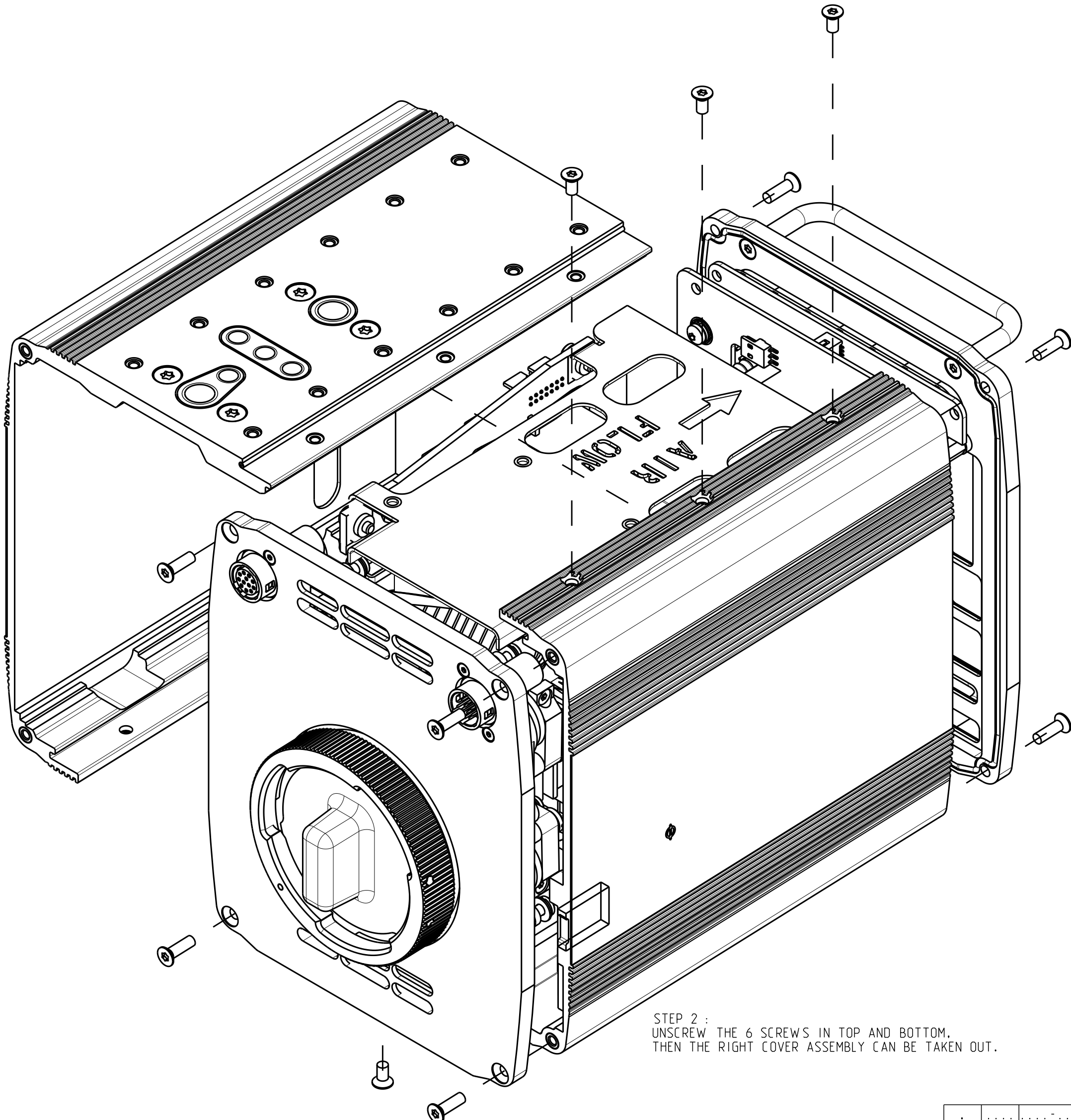


OPENING THE CAMERA :

(FOR CLOSING THE CAMERA:
FOLLOW OPPOSITE SEQUENCE AND FIX USING THE VALUES OF THE TORQUE TABLE)



STEP 1 :
UNSCREW THE FRONT AND BACK ASSEMBLIES



STEP 2 :
UNSCREW THE 6 SCREWS IN TOP AND BOTTOM.
THEN THE RIGHT COVER ASSEMBLY CAN BE TAKEN OUT.

TORQUE TABLE	
Tolerances unless otherwise stated: $\pm 10\%$	
Torque unless otherwise stated:	
Thread size	Torque (Nm)
M2	0.65
M2.5	0.75
M3	1
M4	2

- MATERIAL AND FINISHES MUST BE RoHS COMPLIANT
- MATERIAL OR PACKAGING MUST BE MARKED WITH
RoHS COMPLIANCE MARKING OR LABEL

MATERIAL:				
TREATMENT:				
FINISH:				
DRAWN BY:	DATE:	GENERAL ROUGHNESS:	TOLERANCES UNLESS OTHERWISE STATED:		UNIT
M.de Waal	2013-12-20	Ra 3.2 num	DIMENSION: ± 0.2	ANGLE: $\pm 1^\circ$	mm
TITLE:		LDX GNDLS COMPACT			
		DOCUMENT NUMBER		FORMAT	SHEET
		3922 407 6400		A2	2/2
		RELEASE LEVEL: ...		110-01	.



grass valley

3922 407 64001 LDX GNDLS COMPACT

List of Field Replacable Units (FRUs):

Pos	Part Number	Description
4	3922 404 44031	BAJONET RING GRIP
5	8322 299 71887	CSK SCR STL ST M3X6 BLACK
80	3922 411 57025	PCB F--- SPIDERFLEX SENSIIUM FT
746	2522 600 27017	WASH STL ST 3,2X7
747	2522 613 12005	SPR WASH STL ST 3,1X5,7

Maintenance Manual

THIS DOCUMENT IS THE PROPERTY OF GRASS VALLEY
IT SHALL NOT BE REPRODUCED NOR TRANSMITTED TO A THIRD PARTY WITHOUT PRIOR WRITTEN
CONSENT OF THE COMPANY

NOTE WHEN CLOSING THE CAMERA:

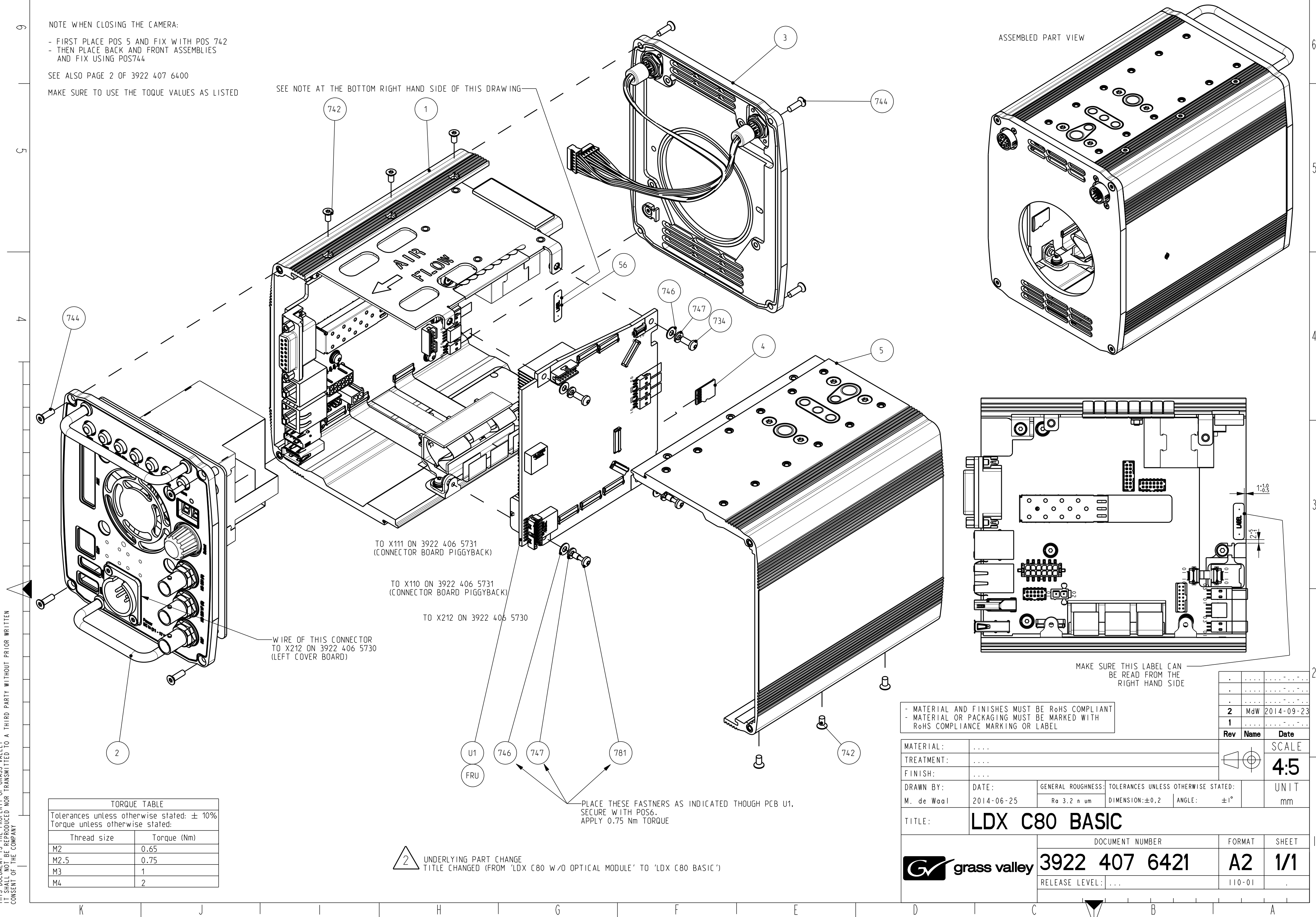
- FIRST PLACE POS 5 AND FIX WITH POS 742
- THEN PLACE BACK AND FRONT ASSEMBLIES AND FIX USING POS744

SEE ALSO PAGE 2 OF 3922 407 6400

MAKE SURE TO USE THE TOQUE VALUES AS LISTED

SEE NOTE AT THE BOTTOM RIGHT HAND SIDE OF THIS DRAWING

ASSEMBLED PART VIEW



TORQUE TABLE	
Tolerances unless otherwise stated: $\pm 10\%$	
Torque unless otherwise stated:	
Thread size	Torque (Nm)
M2	0.65
M2.5	0.75
M3	1
M4	2

- MATERIAL AND FINISHES MUST BE RoHS COMPLIANT
- MATERIAL OR PACKAGING MUST BE MARKED WITH RoHS COMPLIANCE MARKING OR LABEL

MATERIAL:	SCALE 4:5	
TREATMENT:		
FINISH:	UNIT mm	
DRAWN BY:	DATE:		
M. de Waal	2014-06-25	GENERAL ROUGHNESS: Ra 3.2 μ m	TOLERANCES UNLESS OTHERWISE STATED: DIMENSION: ± 0.2 ANGLE: $\pm 1^\circ$
TITLE:		LDX C80 BASIC	
DOCUMENT NUMBER		FORMAT	SHEET
		A2	1/1
RELEASE LEVEL:		110-01	

3922 407 64212 LDX C80 BASIC

List of Field Replacable Units (FRUs):

Pos	Part Number	Description
1	3922 407 64012	LEFT COVER ASSY +
2	3922 407 64021	BACK ASSEMBLY +
3	3922 407 64031	FRONT ASSY +
5	3922 407 64041	RIGHT COVER ASSY +
734	2522 201 08032	PAN SCR STL ST M3X8
742	2522 203 04023	CSK SCR STL ST M3X6
744	2522 203 04025	CSK SCR STL ST M3X10
746	2522 600 27017	WASH STL ST 3,2X7
747	2522 613 12005	SPR WASH STL ST 3,1X5,7
781	2522 200 03024	PAN CAP SCR STL.ST M3x10
U1	3922 406 55961	PCBA RIGHT PROCESSOR BOARD

Maintenance Manual

STICK THE COOLING PAD'S ADHESIVE
SIDE TO THE CENTER OF
THIS SURFACE. THE COOLING PAD IS
INDICATED BY POS. 11

SEE REMARK AT THE BOTTOM
OF THIS DRAWING

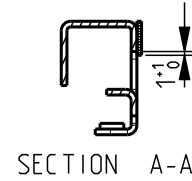
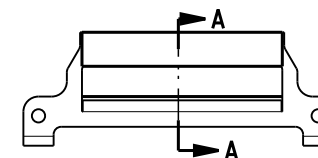
PLACE AMOUNT OF GLUE
(0.325mL) IN AREA AND
PLACE ID BOARD (POS U1)

APPLY 0.35 Nm TORQUE

TAKE CARE THE FOLDED
PART OF THE FLEX IS PLACED
BEHIND THE PCB.

LOCATION OF THE FOAM (POS 4) ON BOTTOM FRAME (POS 5)
PLACE ADHESIVE SIDE OF THE FOAM AT THE INDICATED
AREA ON THE BOTTOM FRAME

TORQUE TABLE	
Tolerances unless otherwise stated: $\pm 10\%$	
Torque unless otherwise stated:	
Thread size	Torque (Nm)
M2	0.65
M2.5	0.75
M3	1
M4	2

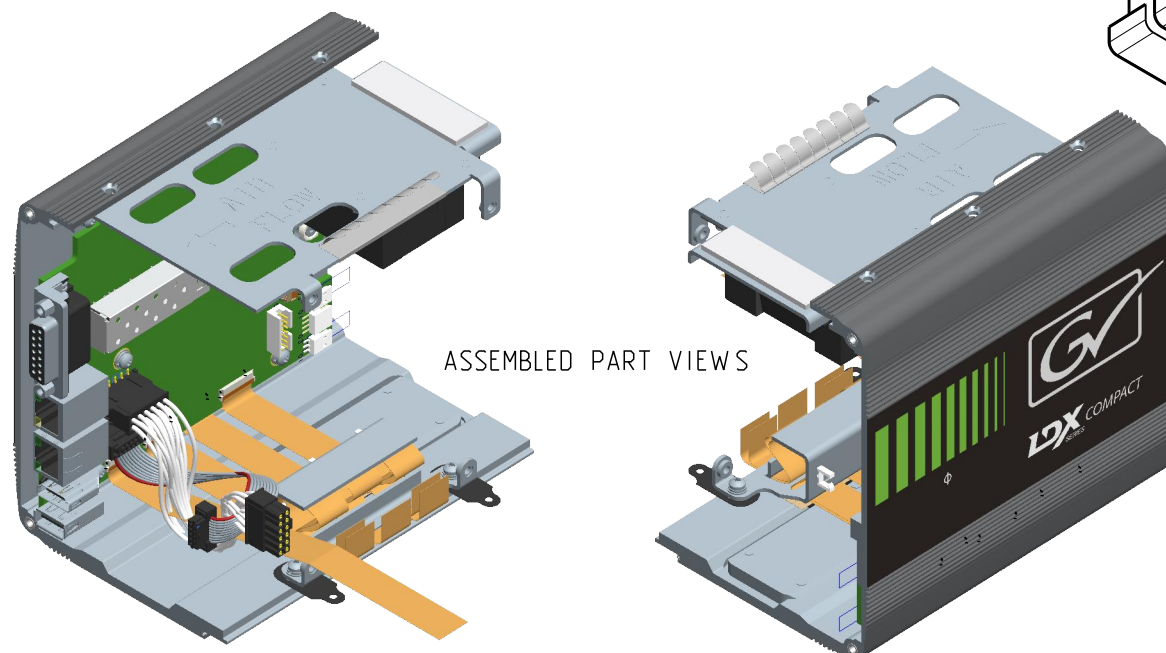


2 CHANGED REVISION
OF POS 81

- MATERIAL AND FINISHES MUST BE RoHS COMPLIANT
- MATERIAL OR PACKAGING MUST BE MARKED WITH
RoHS COMPLIANCE MARKING OR LABEL

MATERIAL:					SCALE	
TREATMENT:					1:2	
FINISH:						
DRAWN BY: M. de Waal	DATE: 2014-09-08	GENERAL ROUGHNESS: Ra 3.2 n um	TOLERANCES UNLESS OTHERWISE STATED: DIMENSION:±0,2		ANGLE: ±1°	UNIT mm	
TITLE:	LEFT COVER ASSY						
		DOCUMENT NUMBER			FORMAT	SHEET	
		3922 407 6401			A3	1/1	
		RELEASE LEVEL:	...		110-01	.	

ASSEMBLED PART VIEWS



3922 407 64012 LEFT COVER ASSY

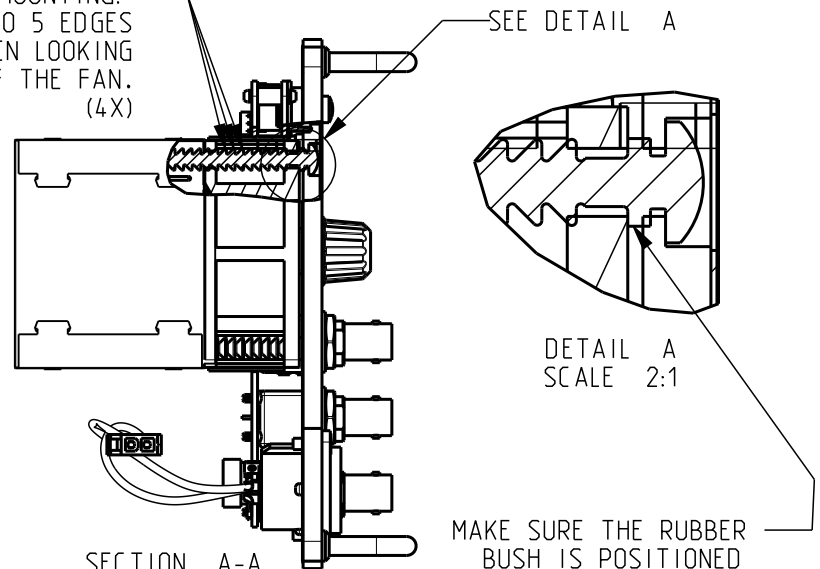
Pos	Part Number	Description
3	518-00002-02	HINGE
9	3922 407 62301	EMC MATERIAL CLIP-ON
10	3922 404 44603	MOUNTING BLOCK
11	3922 405 09101	COOLING PAD 1MM
80	3922 411 56801	PCB F--- FPC 45P 0.3MM TL=160MM
82	3922 205 00005	CLB FLEX 10P FFC 0.5 SUMICARD
84	3922 407 64302	RIBBON CABLE ASSY 10P
733	2522 201 08031	TORX PAN HEAD SCREW M3X6
739	2422 016 05002	MTG PLATE FOR WIRE TIES 10X8
746	2522 600 27017	WASH STL ST 3,2X7
747	2522 613 12005	SPR WASH STL ST 3,1X5,7
749	2522 401 09008	HEX NUT STL ST M3
U2	3922 406 57301	PCBA LEFT COVER BOARD

THIS DOCUMENT IS THE PROPERTY OF GRASS VALLEY
IT SHALL NOT BE REPRODUCED NOR TRANSMITTED TO A THIRD PARTY WITHOUT PRIOR WRITTEN
CONSENT OF THE COMPANY



BACK VIEW
SCALE 1:2

AFTER MOUNTING:
MAKE SURE 3 TO 5 EDGES
ARE VISIBLE WHEN LOOKING
AT THE SIDE OF THE FAN.
(4X)



DETAIL A
SCALE 2:1

MAKE SURE THE RUBBER
BUSH IS POSITIONED
BETWEEN THE FAN AND THE
BACKPLATE

SECTION A-A

SEE DRAWING 'BACK VIEW'
FOR ORIENTATION

MAKE SURE TO APPLY SCREW LOCK BEFORE MOUNTING!

PLACE, IN BACK PLATE,
ACCORDING TO THE 'DETAIL A'
ABOVE. THEN PLACE FAN AND
AIR GUIDE, ACCORDING TO
'SECTION A-A'

AFTER PLACING CUT OFF
EXCESS MATERIAL INSIDE AIR GUIDE

NOTE: THIS DRAWING REPRESENTS
THE CUT OFF VERSION OF THESE
PARTS.

FASTNERS SUPPLIED WITH ENCODER
FIX WITH 1 Nm TORQUE

WASHERS
SUPPLIED WITH
HANDGRIP

FASTNERS SUPPLIED WITH BNC CONNECTORS
FIX WITH 1 Nm TORQUE

SEE DRAWING 'BACK VIEW'
FOR THE POSITION OF
THE CONNECTOR

WASHERS SUPPLIED WITH HANDGRIP

FRU 2x FRU 2x 2x 2x
U2 13 U1 746 747 734

TO X113 ON 3922 406 5731
(CONNECTOR BOARD)

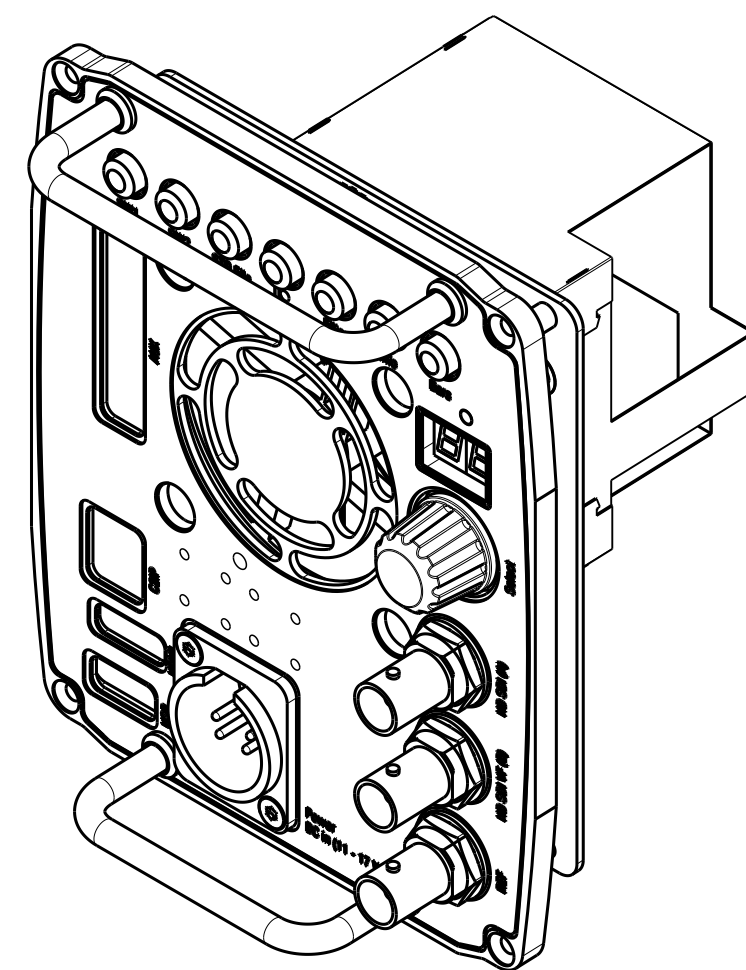
MIND THE ORIENTATION OF THE FAN.
THE DIRECTION OF THE AIR FLOW
SHOULD FACE OUTWARDS:

AIR FLOW DIRECTION

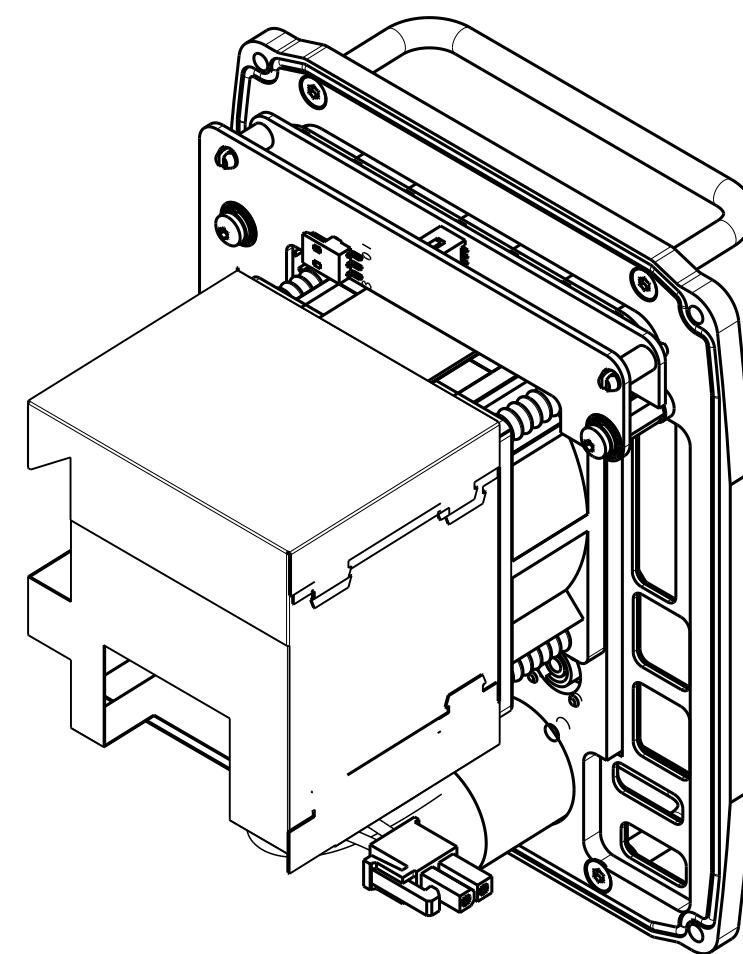
MAKE SURE TO APPLY SCREW LOCK BEFORE MOUNTING!

MAKE SURE TO APPLY SCREW LOCK BEFORE MOUNTING!

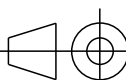

TORQUE TABLE	
Tolerances unless otherwise stated: $\pm 10\%$ Torque unless otherwise stated:	
Thread size	Torque (Nm)
M2	0.65
M2.5	0.75
M3	1
M4	2



ASSEMBLED PART VIEWS



- MATERIAL AND FINISHES MUST BE RoHS COMPLIANT
- MATERIAL OR PACKAGING MUST BE MARKED WITH
RoHS COMPLIANCE MARKING OR LABEL

MATERIAL:								SCALE	
TREATMENT:								1:1	
FINISH:								
DRAWN BY:		DATE:	GENERAL ROUGHNESS:	TOLERANCES UNLESS OTHERWISE STATED:					UNIT
M. de Waal		2013-12-20	Ra 3.2 μ m	DIMENSION: \pm		ANGLE:	\pm°	mm	
TITLE:		BACK ASSY							
			DOCUMENT NUMBER				FORMAT	SHEET	
			3922 407 6402				A2	1/1	
			RELEASE LEVEL:		...		110-01	.	

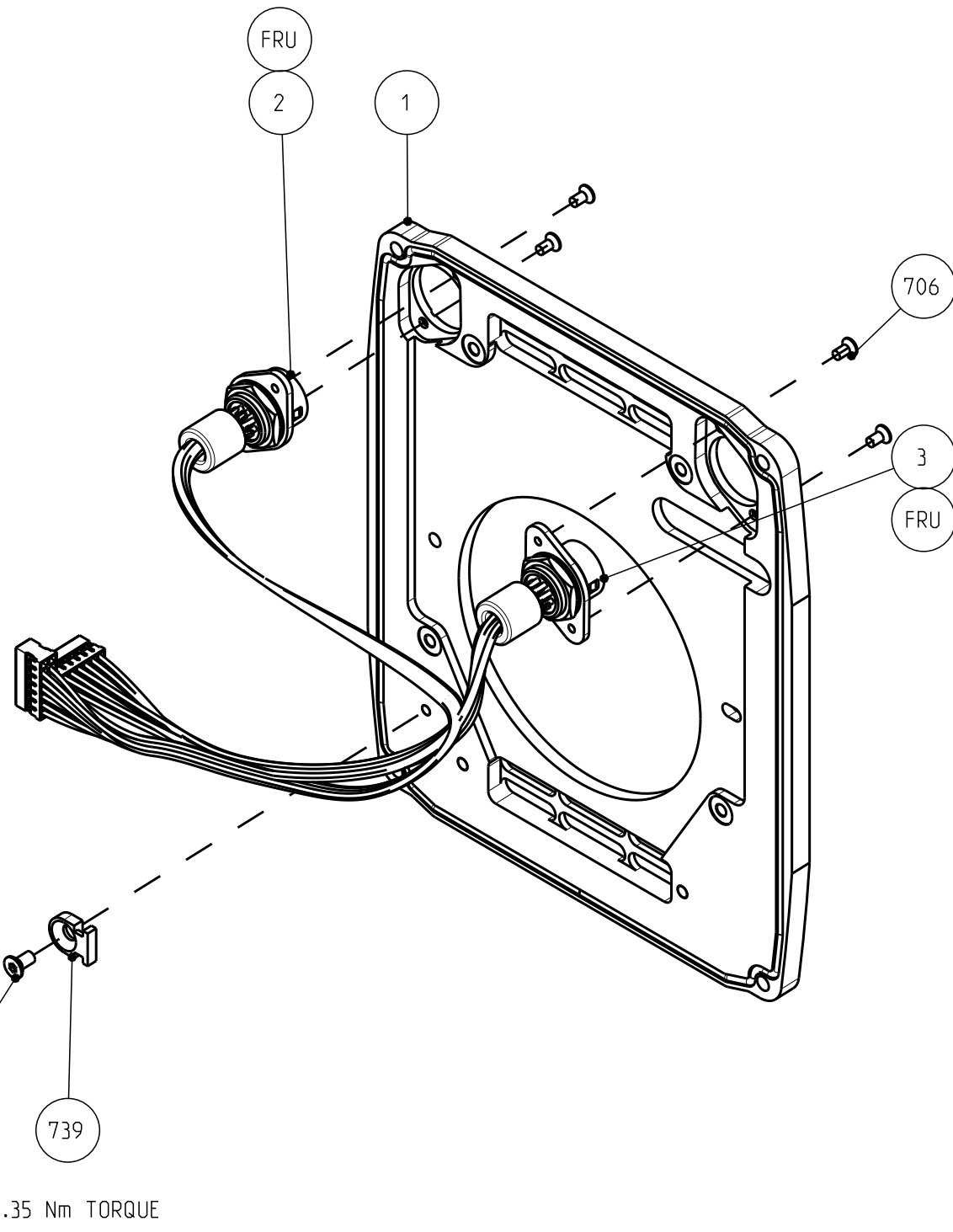
3922 407 64021 BACK ASSEMBLY

List of Field Replacable Units (FRUs):

Refdes	Part Number	Description
3	3922 203 00321	FAN MOUNT RUBBER
9	3922 407 57891	FAN ASSY HDDT ADAPTOR
14	3922 400 11651	ROTARY KNOB
80	3922 407 64291	NEUTRIK CABLE ASSY
734	2522 201 08032	PAN SCR STL ST M3X8
744	2522 203 04025	CSK SCR STL ST M3X10
746	2522 600 28017	WASH PF-CP SH 3,2X7
747	2522 613 12005	SPR WASH STL ST 3,1X5,7
U1	3922 406 57311	PCBA CONNECTOR BOARD
U2	3922 406 57331	CONNECTOR BOARD PIGGYBACK

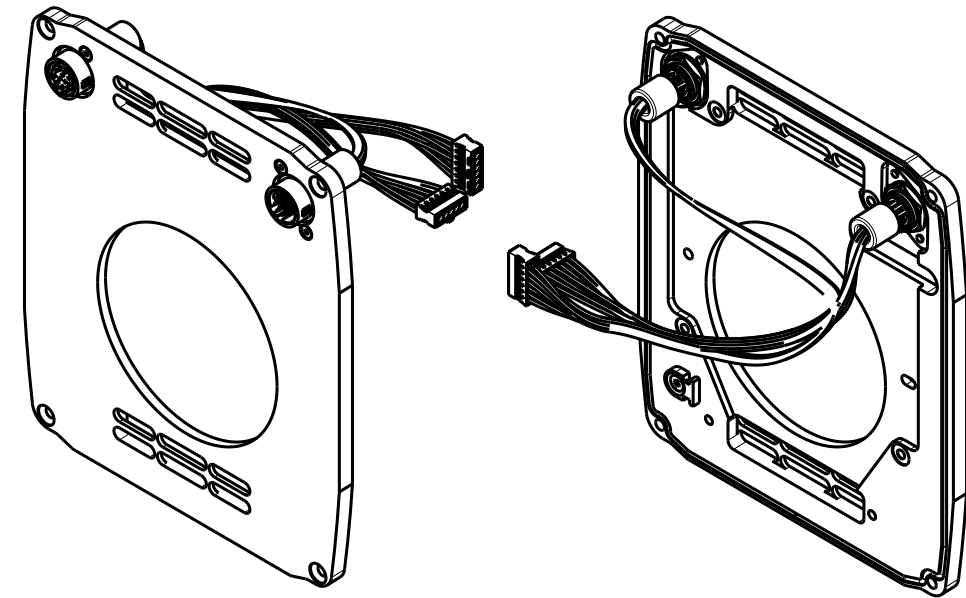
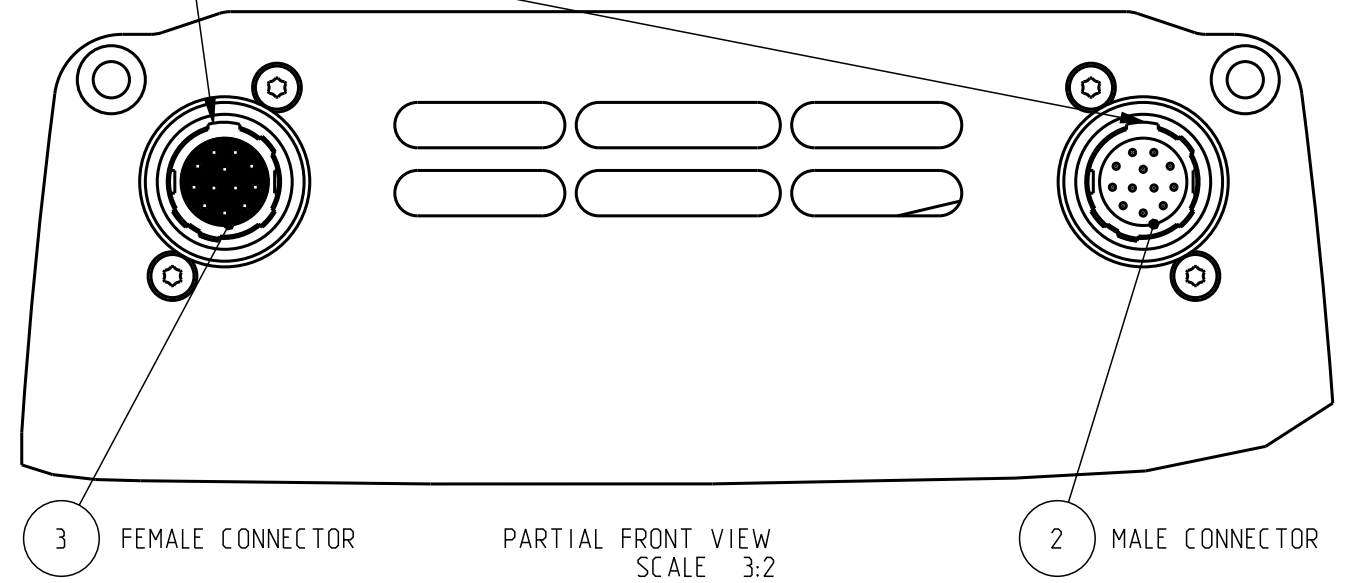
Maintenance Manual

THIS DOCUMENT IS THE PROPERTY OF GRASS VALLEY
IT SHALL NOT BE REPRODUCED NOR TRANSMITTED TO A THIRD PARTY WITHOUT PRIOR WRITTEN
CONSENT OF THE COMPANY



TORQUE TABLE	
Tolerances unless otherwise stated: $\pm 10\%$	
Torque unless otherwise stated:	
Thread size	Torque (Nm)
M2	0.65
M2.5	0.75
M3	1
M4	2

MAKE SURE THIS
NOTCH IS MOUNTED AS DISPLAYED



- MATERIAL AND FINISHES MUST BE RoHS COMPLIANT
- MATERIAL OR PACKAGING MUST BE MARKED WITH RoHS COMPLIANCE MARKING OR LABEL

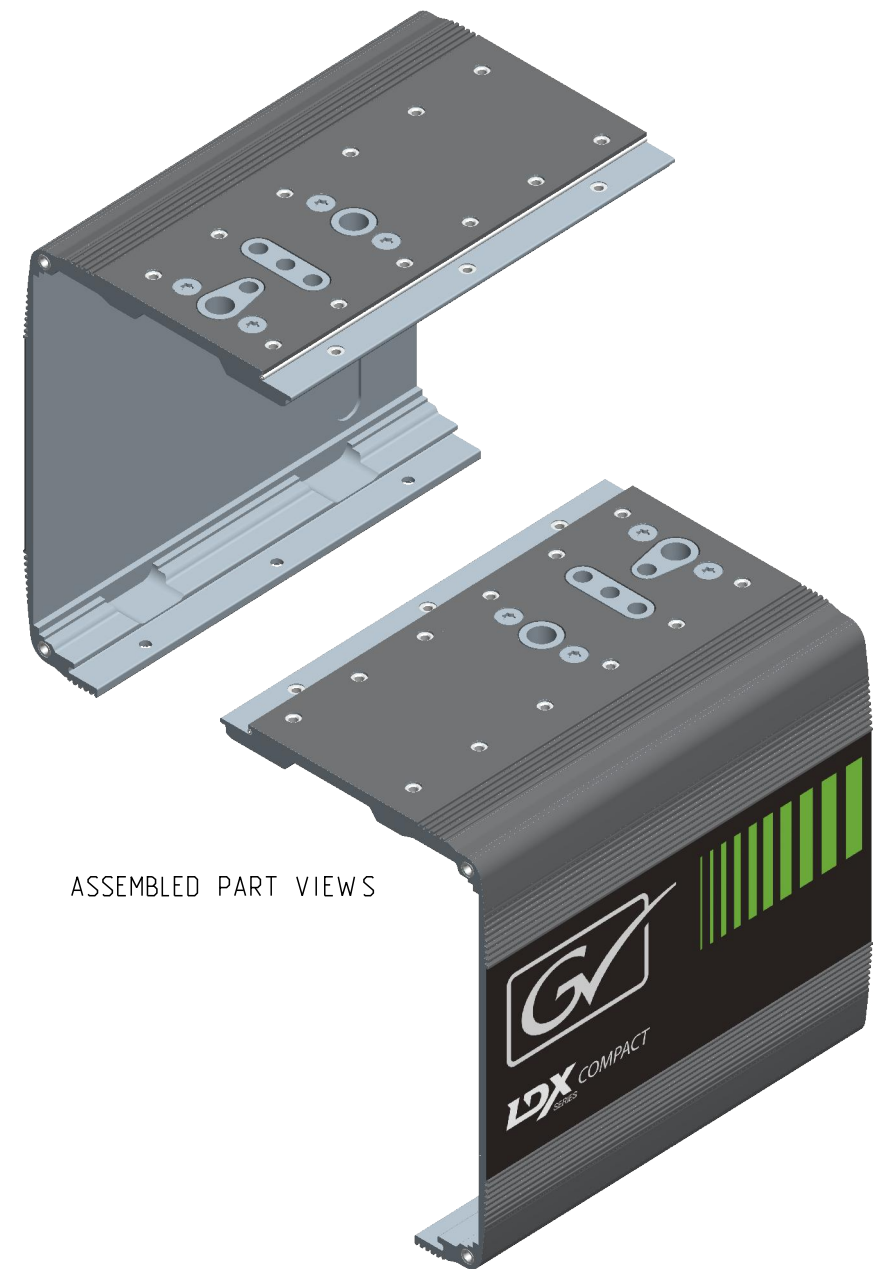
MATERIAL:			SCALE
TREATMENT:			4:5
FINISH:			
DRAWN BY:	DATE:	GENERAL ROUGHNESS:	TOLERANCES UNLESS OTHERWISE STATED:	UNIT
M. de Waal	2013-12-20	Ra 3.2 n um	DIMENSION: $\pm 0,2$ ANGLE: $\pm 1^\circ$	mm
TITLE:	FRONT ASSY			
		DOCUMENT NUMBER	FORMAT	SHEET
		3922 407 6403	A3	1/1
		RELEASE LEVEL: ...	110-01	.

3922 407 64031 FRONT ASSY

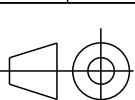
List of Field Replacable Units (FRUs):

Pos	Part Number	Description
2	3922 407 64222	LENS CONNECTOR ASSY MALE
3	3922 407 64232	LENS CONNECTOR ASSY FEMALE

Maintenance Manual



<ul style="list-style-type: none"> - MATERIAL AND FINISHES MUST BE RoHS COMPLIANT - MATERIAL OR PACKAGING MUST BE MARKED WITH RoHS COMPLIANCE MARKING OR LABEL
--

MATERIAL:			SCALE	
TREATMENT:			1:1	
FINISH:				
DRAWN BY:	DATE:	GENERAL ROUGHNESS:			

UNIT	mm
FORMAT	SHEET
A3	1/1
110-01	.

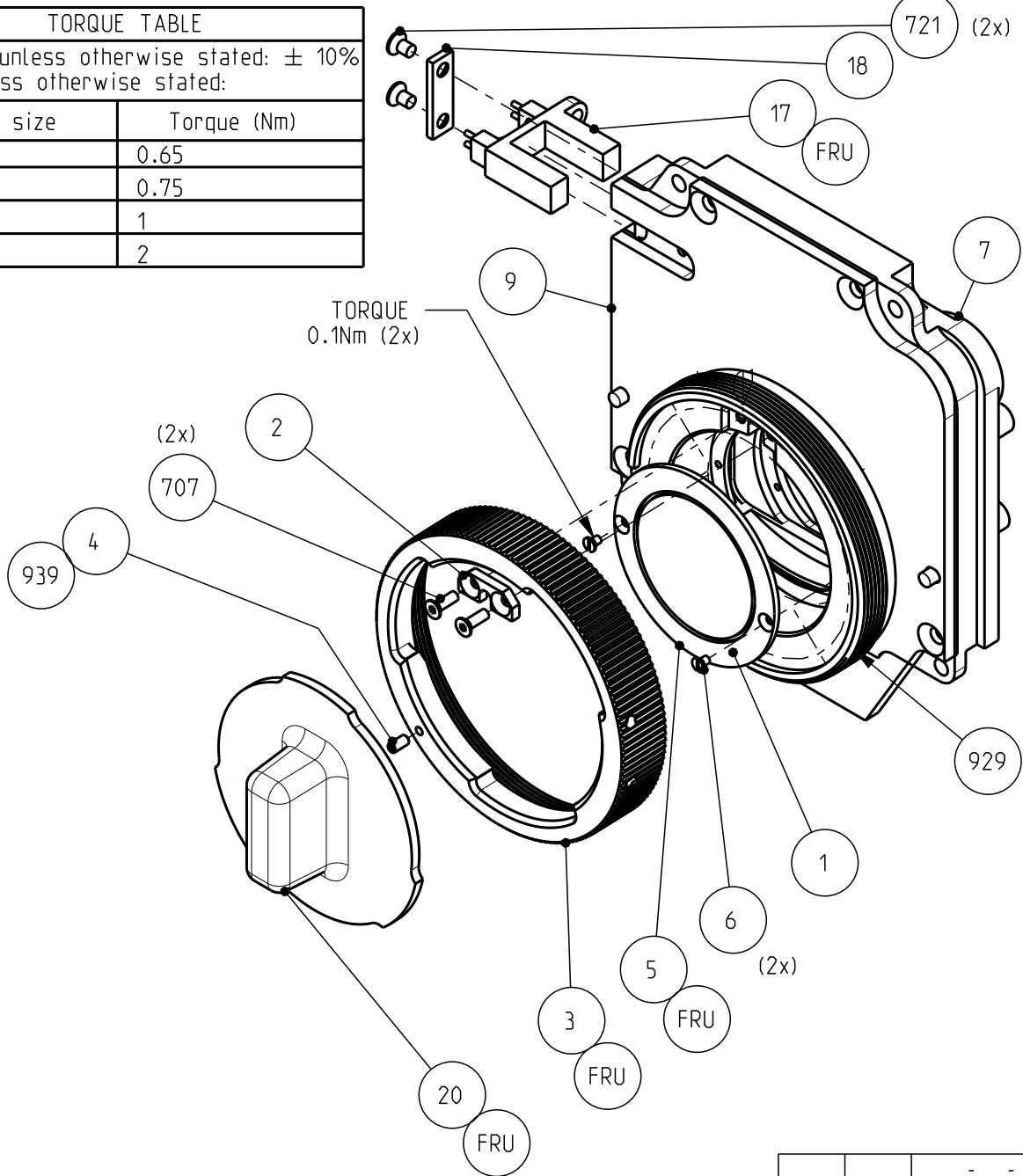
3922 407 64041 RIGHT COVER ASSY

List of Field Replacable Units (FRUs):

Pos	Part Number	Description
3	3922 404 44603	MOUNTING BLOCK

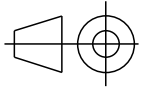
Maintenance Manual

TORQUE TABLE	
Tolerances unless otherwise stated: $\pm 10\%$	
Torque unless otherwise stated:	
Thread size	Torque (Nm)
M2	0.65
M2.5	0.75
M3	1
M4	2




- MATERIAL AND FINISHES MUST BE RoHS COMPLIANT
- MATERIAL OR PACKAGING MUST BE MARKED WITH RoHS COMPLIANCE MARKING OR LABEL

1	VH	2013-01-14
1	VH	2012-07-12
Rev	Name	Date

MATERIAL:			SCALE
TREATMENT:			4:5
FINISH:			UNIT
DRAWN BY:	DATE:	GENERAL ROUGHNESS:	TOLERANCES UNLESS OTHERWISE STATED:	mm
V.Heijman	2011-08-08	Ra 3.2 n um	DIMENSION: $\pm 0,2$ ANGLE: $\pm 1^\circ$	

TITLE:	FILTER WHEEL BOX ASSY			
--------	------------------------------	--	--	--

	DOCUMENT NUMBER		FORMAT	SHEET
	3922 407 5542		A4	1/1
	RELEASE LEVEL: ...		110-01	sh120

THIS DOCUMENT IS THE PROPERTY OF GRASS VALLEY
IT SHALL NOT BE REPRODUCED NOR TRANSMITTED TO A THIRD PARTY WITHOUT PRIOR WRITTEN
CONSENT OF THE COMPANY

3922 407 55421 FILTER WHEEL BOX ASSY

List of Field Replacable Units (FRUs):

Pos	Part Number	Description
4	2522 043 02017	SET SCREW HEX ST BLK M2X4
5	3922 407 51581	FILTER ASSY
6	2522 187 21002	CSK SCHR STLST M 1,6X2,5
7	3922 407 55442	MOUNTING PLATE ASSY
17	3922 407 61232	OPTICAL SWITCH ASSY
18	3922 404 43531	OPT SWITCH MOUNT STRIP
20	3922 400 07891	DUSTCAP
23	2522 187 21003	CSK SCR STL ST M1,6X3
721	2522 203 04011	CSK SCR STL ST M2,5x4
3	3922 404 23633	BAJONET RING
726	2522 600 27137	WASH STL ST 2,7X6,5
727	2522 613 12063	SPR WASH STL ST 2,6X5,1

Maintenance Manual