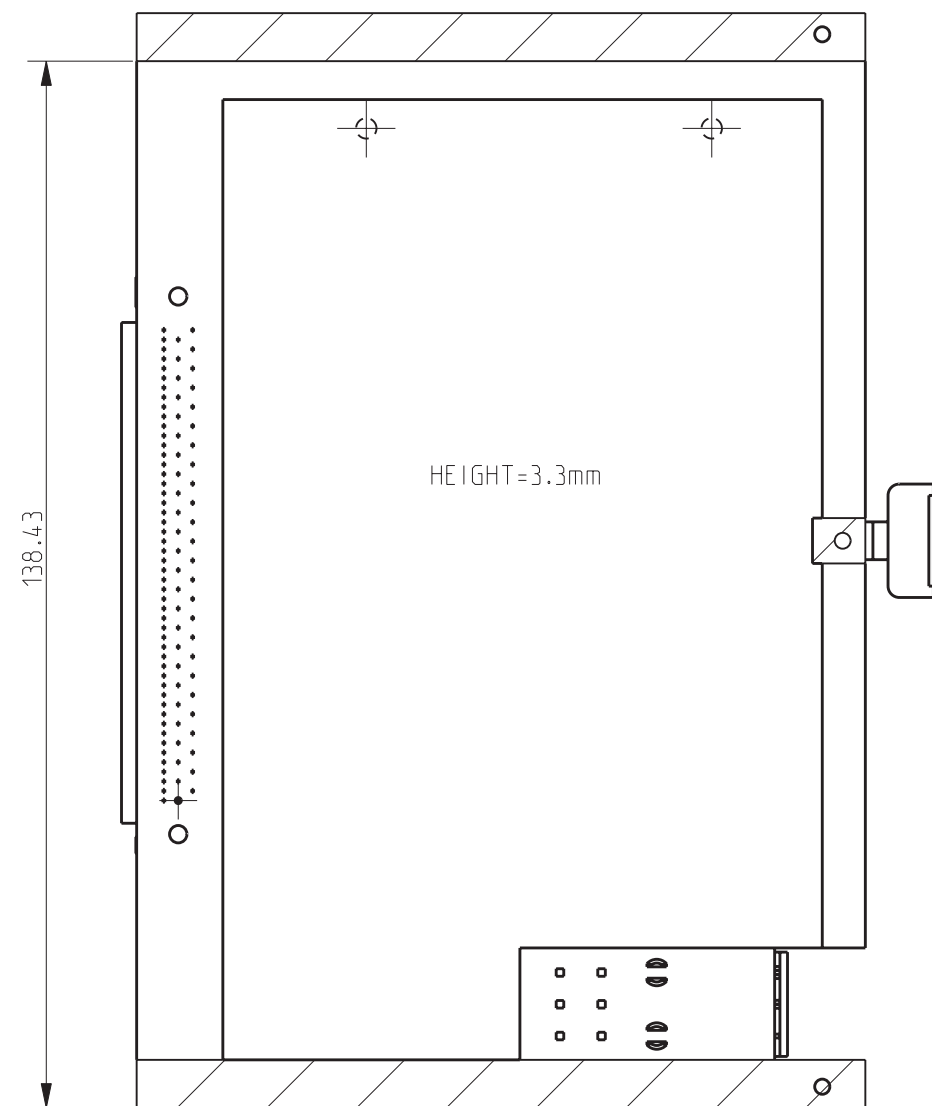
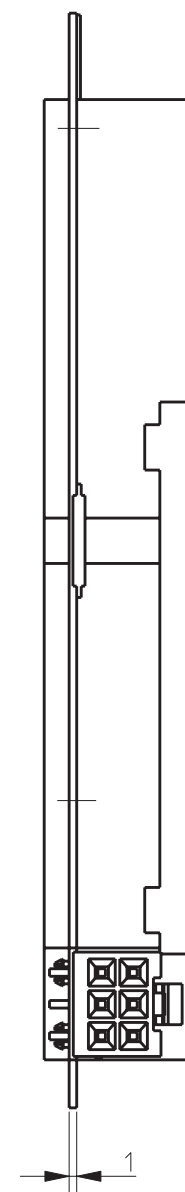
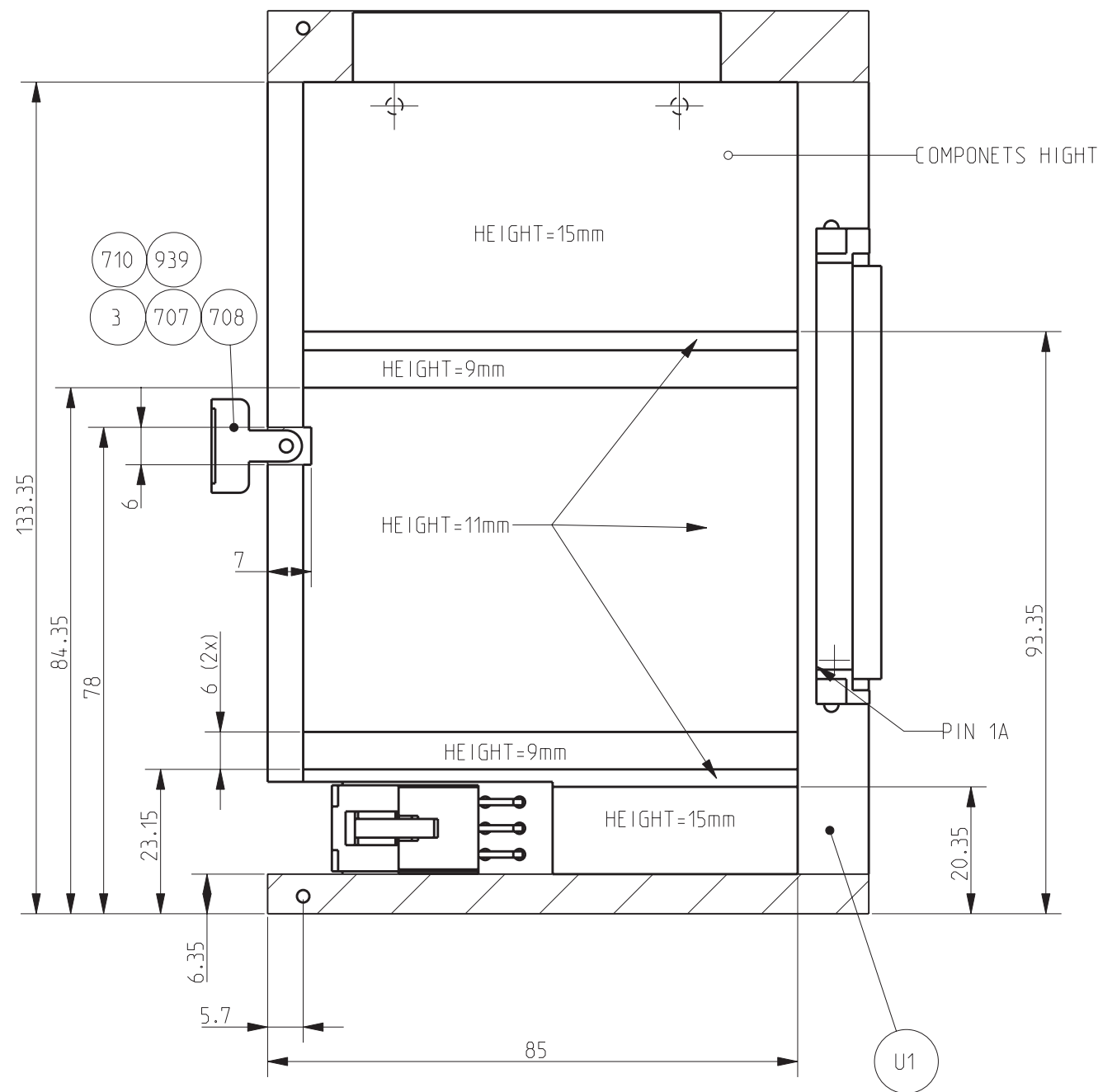


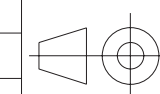
THIS DOCUMENT IS THE PROPERTY OF THOMSON BROADCAST SYSTEMS & MEDIA SOLUTIONS
IT SHALL NOT BE REPRODUCED NOR TRANSMITTED TO A THIRD PARTY WITHOUT PRIOR WRITTEN
CONSENT OF THE COMPANY



REMOVE THE TWO EJECTORS
ADD EJECTOR POS 3
REMOVE STATUS STICKER OF 3922 406 5044 BOARD
ADD STATUS STICKER "WIR BAT CAM POWER BRD" (3922 401 44001)

STATUS 09

Rev	Name	Date
...	...	2008-02-27
...	...	2008-02-26
...	...	2005-06-07



SCALE

1:1

UNIT
mm

MATERIAL:	USE 3922 406 5044 FIB BAT CAM POWER			
TREATMENT:			
FINISH:			
DRAWN BY:	DATE:	GENERAL ROUGHNESS:	TOLERANCES UNLESS OTHERWISE STATED:	
CHP	2005-03-14	Ra 3.2 n um	DIMENSION: ±0,2	ANGLE: ±1°
TITLE:	WIR.-BAT CAMERA PWR BRD			
	DOCUMENT NUMBER		FORMAT	SHEET
	3922 406 5204		A3	1/1
	RELEASE LEVEL: Released		110-01	.