

Maintenance Manual

13-00057-000 February 2019 v1.0



HDX-Plus, Power Plus 2 & SHED

Power Solutions for Broadcast Cameras



Declaration of Conformity

We, Grass Valley Nederland B.V., Bergschot 69, 4817 PA Breda, The Netherlands, declare under our sole responsibility that these products are in compliance with the following standards:

- EN62368-1:2014 + AC:2015 — Safety
- EN55032:2012 + C2:2013 — EMC (Emission)
- EN55103-2:2009 — EMC (Immunity)

following the provisions of:

- a. the Low Voltage directive 2014/35/EU
- b. the EMC directive 2014/30/EU
- c. the RoHS directive 2011/65/EU

FCC CLASS A Statement

This product generates, uses, and can radiate radio frequency energy and if not installed and used in accordance with the instructions, may cause interference to radio communications.

It has been tested and found to comply with the limits for a CLASS A digital device pursuant to part 15 of the FCC rules, which are designed to provide reasonable protection against such interference when operated in a commercial environment.

Operation of this product in a residential area is likely to cause interference in which case the user at his own expense will be required to take whatever measures may be required to correct the interference.

Copyright

Copyright Grass Valley Canada 2019. Copying of this document and giving it to others, and the use or communication of the contents thereof, are forbidden without express authority. Offenders are liable to the payment of damages. All rights are reserved in the event of the grant of a patent or the registration of a utility model or design. Liable to technical alterations in the course of further development.

Trademarks

Grass Valley, LDX Series and derivatives are trademarks or registered trademarks of Grass Valley Canada. Belden Inc., Grass Valley Canada and other parties may also have trademark rights in other terms used herein.

Recycling

Visit www.grassvalley.com for recycling information.

Packing for return

If a unit is being returned to Grass Valley for servicing, try to use the containers and materials of the original packaging. Attach a tag indicating the type of service required, return address, model number, full serial number and the return number which will be supplied by your Grass Valley service centre. If the original packing is not available or can no longer be used contact your regional Grass Valley service representative to have a return package provided.

Important information

This information is intended as a guide for trained and qualified personnel who are aware of the dangers involved in handling potentially hazardous electrical / electronic equipment. It is not intended to contain a complete list of all safety precautions which should be observed by personnel in using this or other electronic equipment.

The installation, maintenance and service of this equipment involves risks both to personnel and equipment and must be performed only by qualified personnel exercising due care.

Personnel engaged in the installation, operation, maintenance or servicing of this equipment are urged to become familiar with First Aid theory and practises.

During installation and operation of this equipment, local building safety and fire protection standards must be observed.

Whenever it is likely that safe operation is impaired, the apparatus must be made inoperative and secured against any unintended operation. The appropriate servicing authority must then be informed. For example, safety is likely to be impaired if the apparatus fails to perform intended function or shows visible damage.

Warnings and Cautions

When performing service, be sure to read and comply with the warning and caution notices appearing in the manuals. Warnings indicate danger that requires correct procedures or practices to prevent death or injury to personnel. Cautions indicate procedures or practices that should be followed to prevent damage or destruction to equipment to property.

Warnings

- THE CURRENTS AND VOLTAGES PRESENT IN THIS EQUIPMENT ARE DANGEROUS. ALL PERSONNEL MUST AT ALL TIMES FOLLOW THE SAFETY REGULATIONS.
- ALWAYS DISCONNECT POWER BEFORE REMOVING COVERS OR PANELS.
- ALWAYS DISCHARGE HIGH VOLTAGE POINTS BEFORE SERVICING.
- NEVER MAKE INTERNAL ADJUSTMENTS, PERFORM MAINTENANCE OR SERVICE WHEN ALONE OR WHEN FATIGUED.
- IN CASE OF AN EMERGENCY ENSURE THAT THE POWER IS DISCONNECTED.
- ANY INTERRUPTION OF THE PROTECTION CONDUCTOR INSIDE OR OUTSIDE THE APPARATUS, OR DISCONNECTION OF THE PROTECTIVE EARTH TERMINAL, IS LIKELY TO MAKE THE APPARATUS DANGEROUS. INTENTIONAL INTERRUPTION IS PROHIBITED.

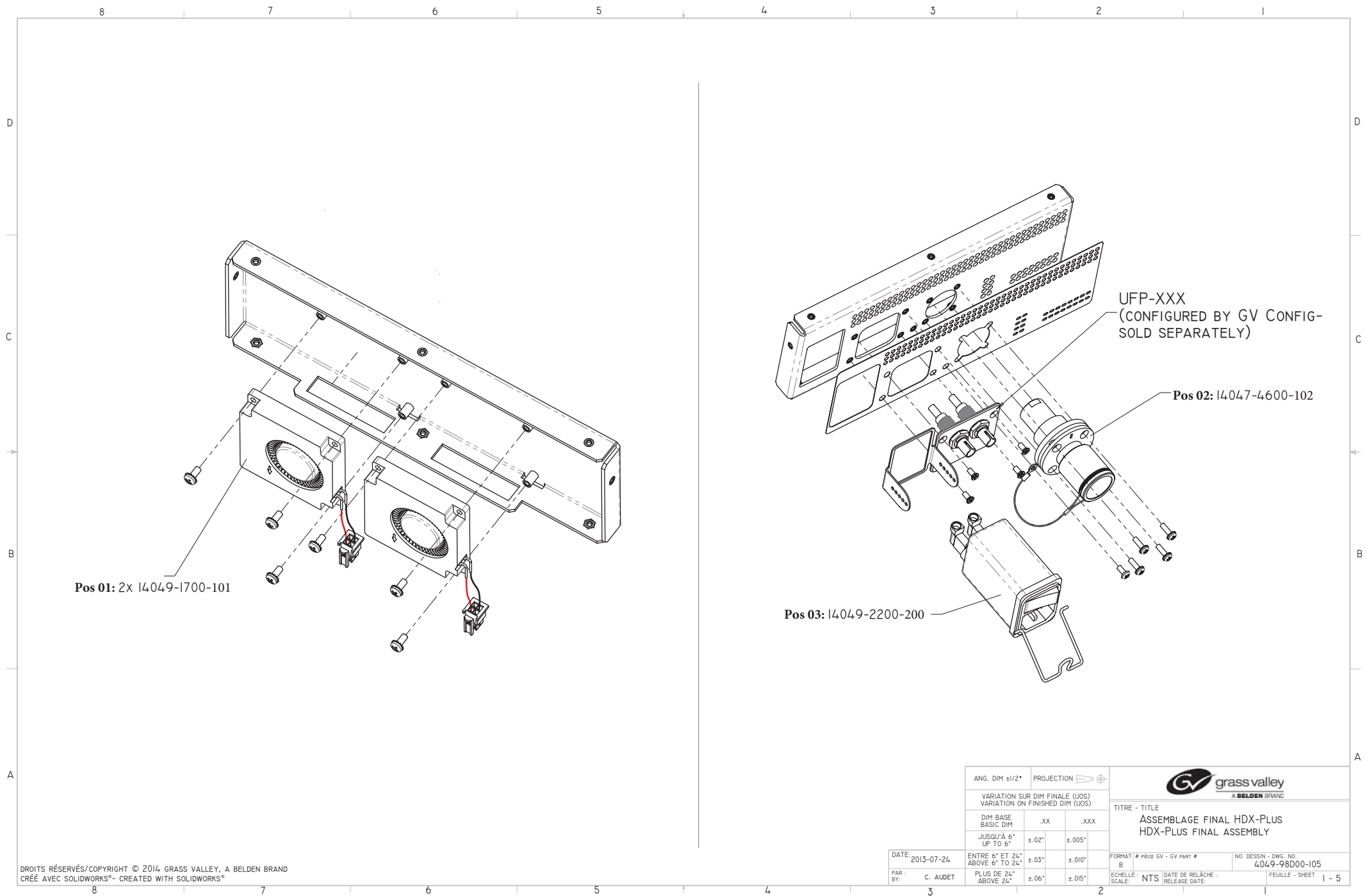
Cautions

- To prevent risk of overheating, ventilate the product correctly.
-

HDX,PLUS,with LEMO, for PP2, LDX, Focus and Sony Cameras

List of Field Replacable Units (FRUs):

Pos	Part Number	Description
01	14049-1700-101	HDX Plus BLOWER Cable Assembly
02	14047-4600-102	CABLE ASSY LEMO RECEPTACLE TO 3 POS MOLEX
03	14049-2200-200	POWER MODULE WIRE ASSY
04	91-04049-710	PCBA, HDX Plus,
05	26-02596	Coupler, Dual Window, 1x2, 10/90, 900um, ST/UPC connector on 10%, LC/UPC on common and 90% ports.
06	91-04049-730	PCBA, HDX Plus, Photodiode interface
07	91-04049-740	ASSY EL/ME, HDX+ Photodiode Signal Cable, 6 pos





Pos 01: 2x I4049-1700-101

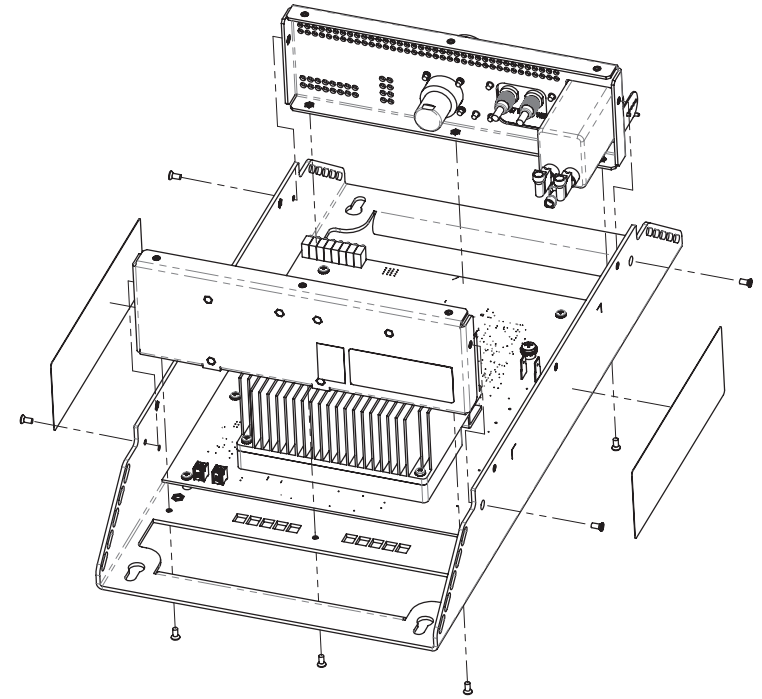
UFP-XXX
(CONFIGURED BY GV CONFIG-
SOLD SEPARATELY)

Pos 02: I4047-4600-102



Pos 03: I4049-2200-200

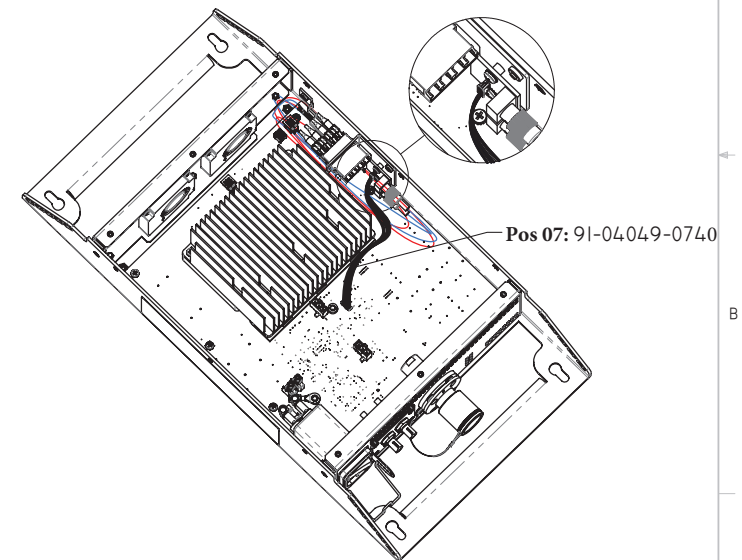
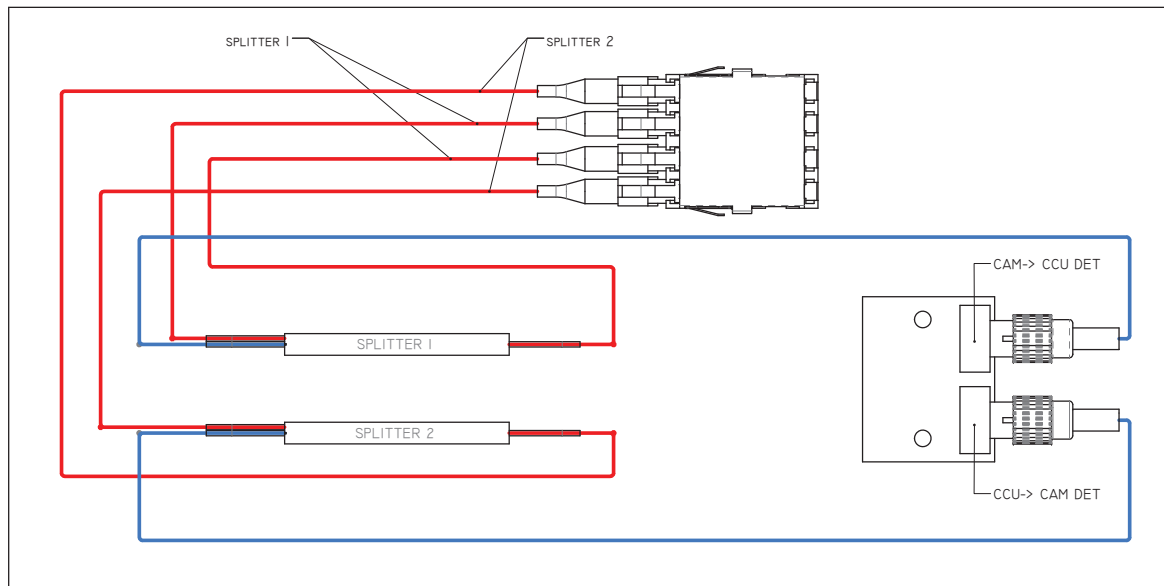
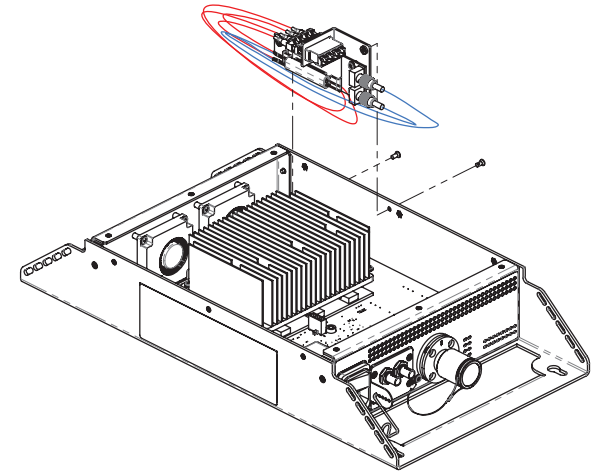
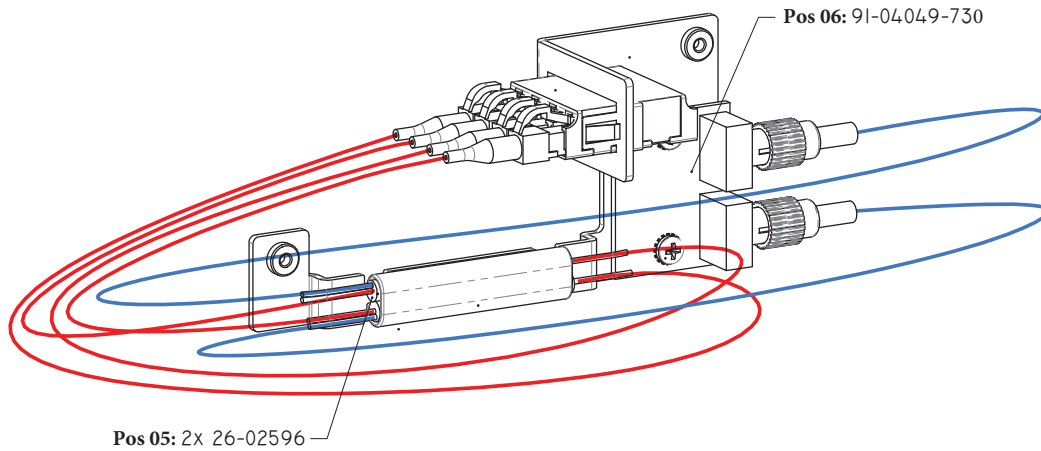
ANG. DIM ±1/2°		PROJECTION 		 A BELDEN BRAND	
VARIATION SUR DIM FINALE (UOS) VARIATION ON FINISHED DIM (UOS)				TITRE - TITLE	
DIM BASE BASIC DIM		.XX	.XXX	ASSEMBLAGE FINAL HDX-PLUS HDX-PLUS FINAL ASSEMBLY	
JUSQU'À 6" UP TO 6"		±.02°	±.005°		
DATE: 2013-07-24	ENTRE 6" ET 24" ABOVE 6" TO 24"		±.03°	±.010°	FORMAT # PIÈCE GV - GV PART # B
PAR : C. AUDET	PLUS DE 24" ABOVE 24"		±.06°	±.015°	NO. DESSIN - DWG. NO. 4049-98D00-105
ECHELLE : NTS		DATE DE RELÂCHE : SCALE: RELEASE DATE:		FEUILLE - SHEET 1 - 5	



Pos 04: 91-04049-710

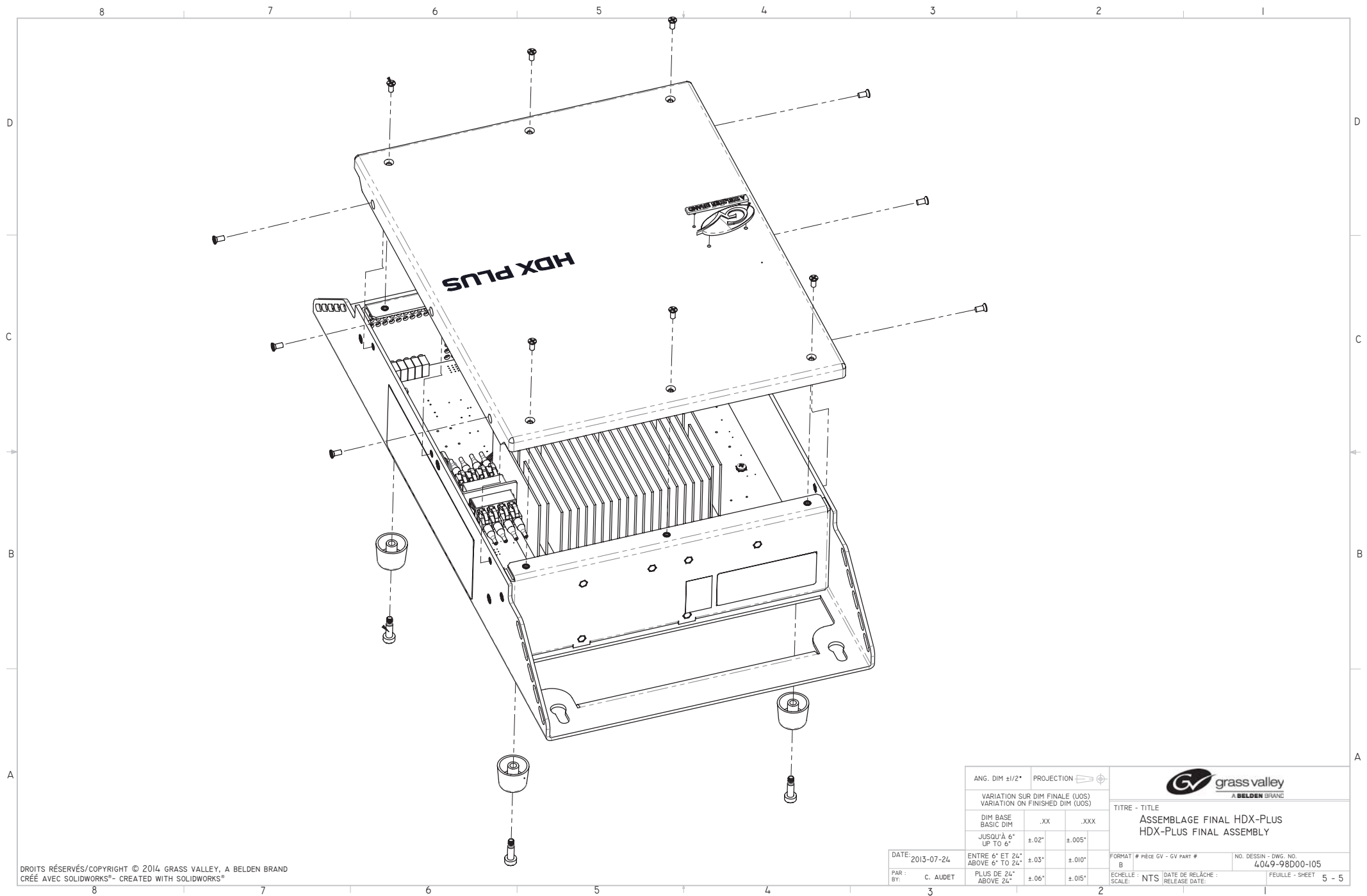


MATERIAU ET FINI DE SURFACE CONFORMES À LA DIRECTIVE RoHS
MATERIAL AND SURFACE FINISH CONFORM TO RoHS DIRECTIVE



ANG. DIM $\pm 1/2^\circ$		PROJECTION 		 grass valley A BELDEN BRAND	
VARIATION SUR DIM FINALE (UOS) VARIATION ON FINISHED DIM (UOS)				TITRE - TITLE	
DIM BASE BASIC DIM		.XX	.XXX	ASSEMBLAGE FINAL HDX-PLUS HDX-PLUS FINAL ASSEMBLY	
JUSQU'À 6" UP TO 6"		$\pm .02^\circ$	$\pm .005^\circ$		
ENTRE 6" ET 24" ABOVE 6" TO 24"		$\pm .03^\circ$	$\pm .010^\circ$	FORMAT # PIÈCE GV - GV PART #	
PLUS DE 24" ABOVE 24"		$\pm .06^\circ$	$\pm .015^\circ$	NO. DESSIN - DWG. NO. 4049-98D00-105	
ECHELLE : NTS				DATE DE RELÂCHE : RELEASE DATE:	
				FEUILLE - SHEET 2 - 5	



ANG. DIM ±1/2°		PROJECTION 		 grass valley A BELDEN BRAND	
VARIATION SUR DIM FINALE (UOS) VARIATION ON FINISHED DIM (UOS)				TITRE - TITLE	
DIM BASE BASIC DIM		.XX		ASSEMBLAGE FINAL HDX-PLUS HDX-PLUS FINAL ASSEMBLY	
JUSQU'À 6" UP TO 6"		±.02°		±.005°	
ENTRE 6" ET 24" ABOVE 6" TO 24"		±.03°		±.010°	
PLUS DE 24" ABOVE 24"		±.06°		±.015°	
DATE: 2013-07-24	ENTRE 6" ET 24" ABOVE 6" TO 24"		FORMAT # PIÈCE GV - GV PART #		NO. DESSIN - DWG. NO.
PAR : C. AUDET	PLUS DE 24" ABOVE 24"		B		4049-98D00-105
3		2		ECHELLE NTS	DATE DE RELACHE : RELEASE DATE:
				FEUILLE - SHEET 3 - 5	



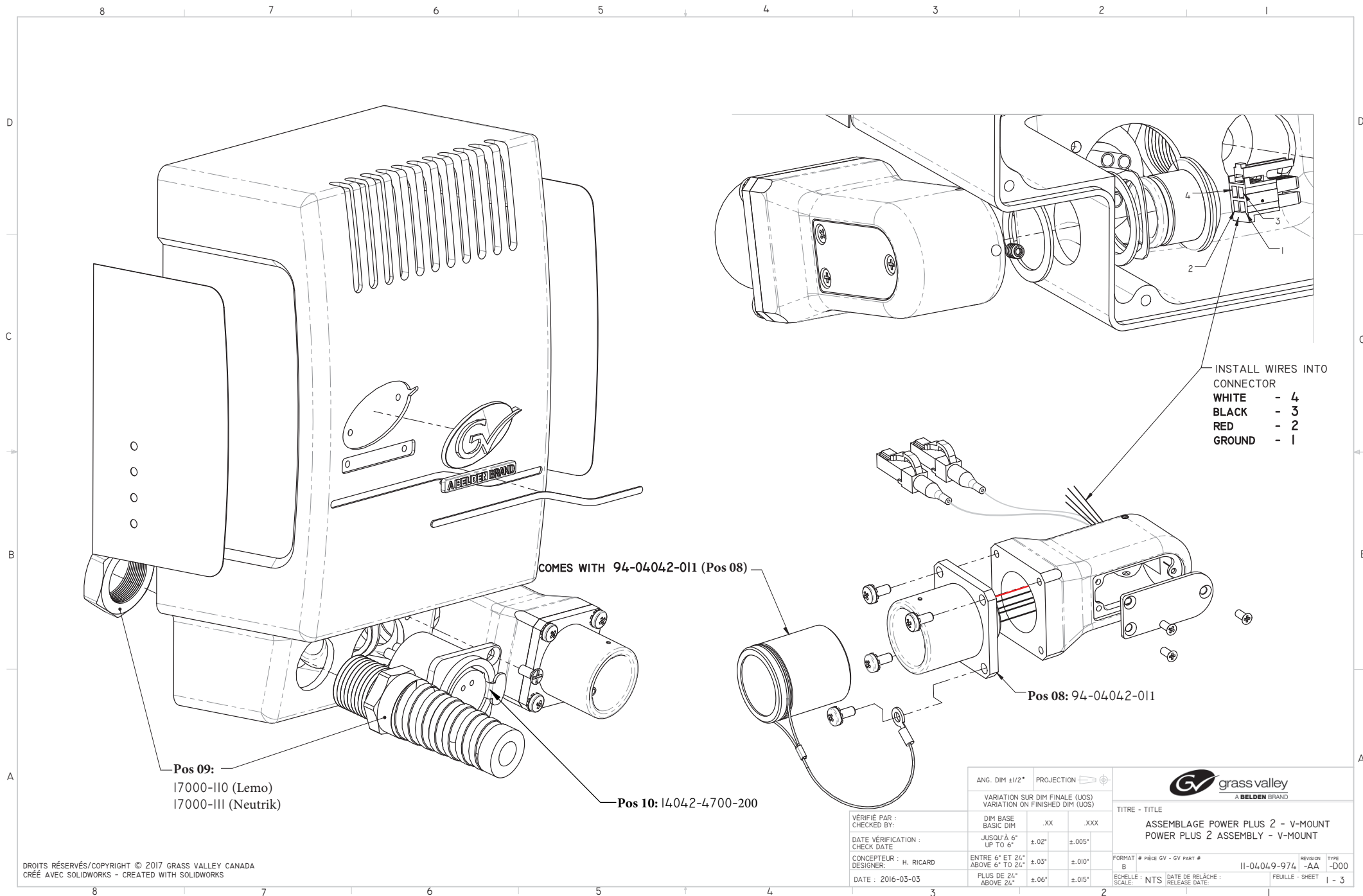
DROITS RÉSERVÉS/COPYRIGHT © 2014 GRASS VALLEY, A BELDEN BRAND
CRÉÉ AVEC SOLIDWORKS®- CREATED WITH SOLIDWORKS®



ANG. DIM ±1/2"			PROJECTION 		 grass valley A BELDEN BRAND	
VARIATION SUR DIM FINALE (UOS) VARIATION ON FINISHED DIM (UOS)				TITRE - TITLE		
DIM BASE BASIC DIM		.XX	.XXX		ASSEMBLAGE FINAL HDX-PLUS HDX-PLUS FINAL ASSEMBLY	
JUSQU'À 6" UP TO 6"		±.02"	±.005"			
ENTRE 6" ET 24" ABOVE 6" TO 24"		±.03"	±.010"		FORMAT / # PIÈCE GV - GV PART #	
PLUS DE 24" ABOVE 24"		±.06"	±.015"		NO. DESSIN - DWG. NO. 4049-98D00-105	
DATE: 2013-07-24				ECHAPELLE / SCALE: NTS		DATE DE RELÂCHE : RELEASE DATE:
PAR : C. AUDET				FEUILLE - SHEET		5 - 5
3		2				

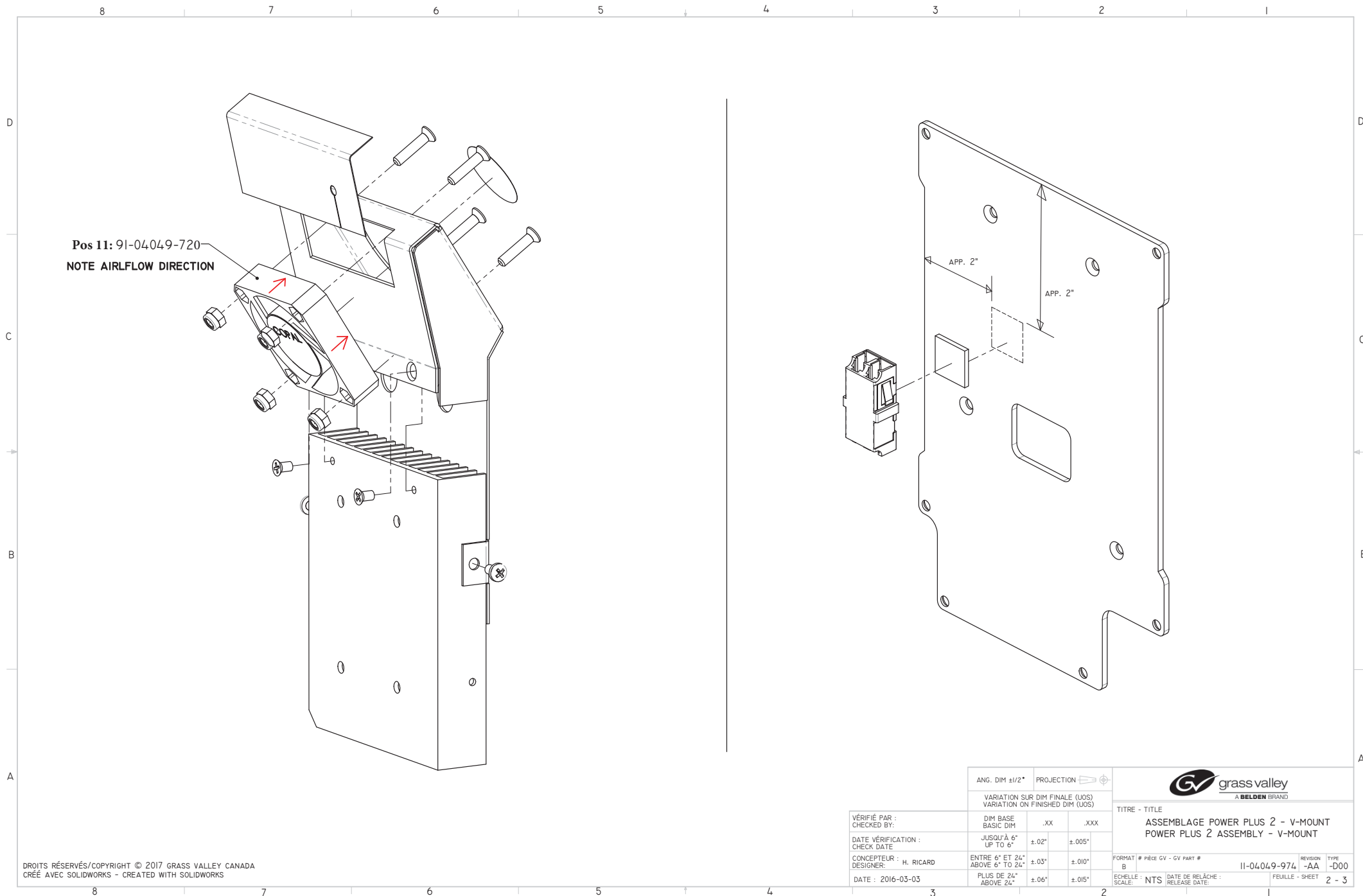
PWRPL2-304-V/AB Power Plus 2 camera power adapter: SMPTE 304M dongle & SMPTE 304M receptacle on swivel, 17VDC IDX V or Anton/Bauer mount.

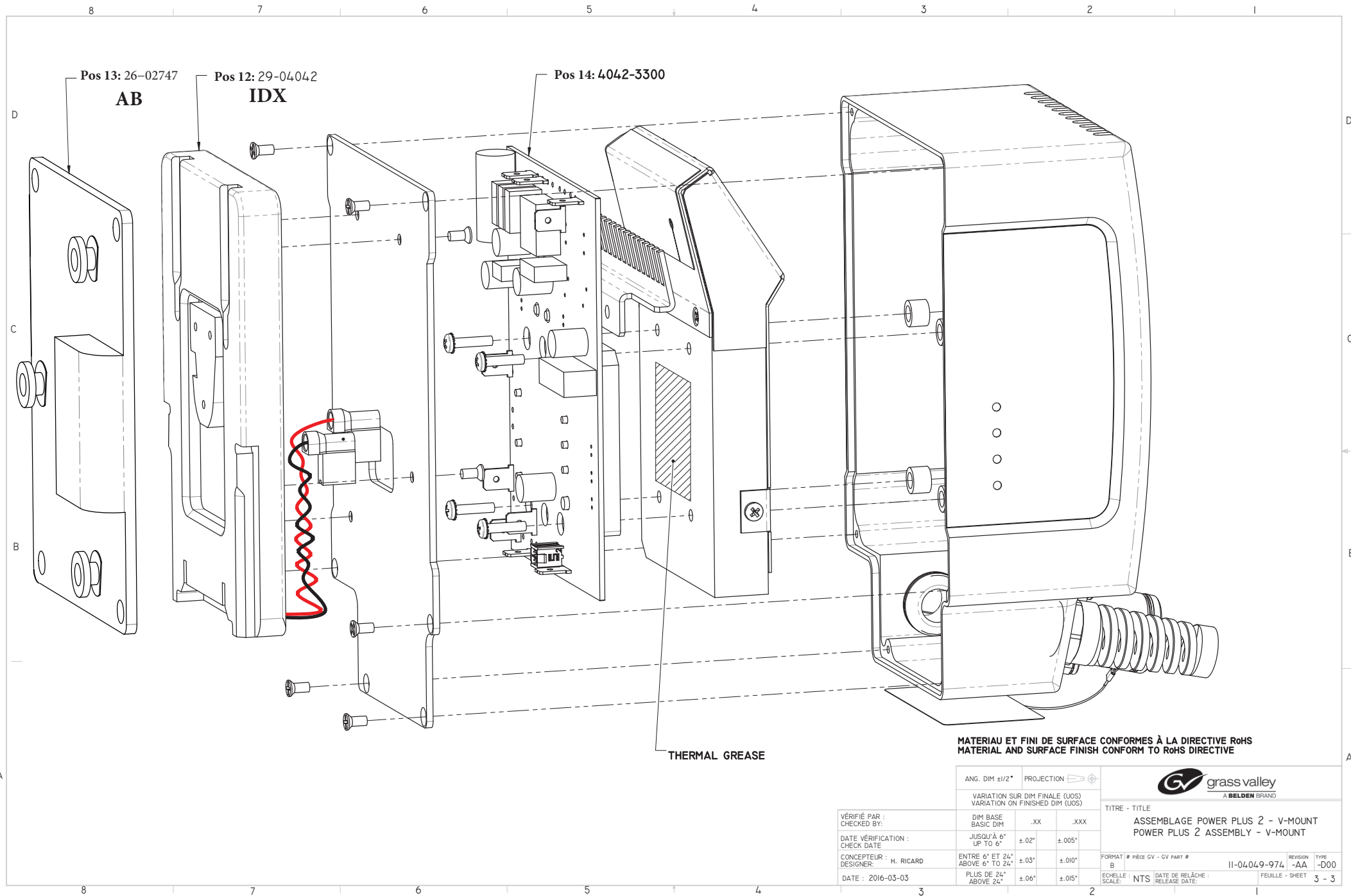
List of Field Replacable Units (FRUs):

Pos	Part Number	Description
08	94-04042-011	MECH,ASSY,LEMO,CONNECTOR,SMPTE,LC,CLIP
09	17000-110	CABLE,LEMO,MALE,CONNECTOR,304,
09	17000-111	CABLE,NEUTRIK,CONNECTOR,PLUG,
10	14042-4700-200	Cable Assy, PowerPlus2, XLR4 CABLE, Aux Output Power
11	91-04049-720	ASSY EL/ME, PowerPlus 2, Fan
12	29-04042	NBV,V-MOUNT PLATE,W/DIGITAL,PINS
13	26-02747	BATTERY,PACK,MILLED,A/B
14	04042-3300	POWER PLUS 2 BOARD





ANG. DIM $\pm 1/2^\circ$		PROJECTION 		 grass valley A BELDEN BRAND	
VARIATION SUR DIM FINALE (UOS) VARIATION ON FINISHED DIM (UOS)				TITRE - TITLE ASSEMBLAGE POWER PLUS 2 - V-MOUNT POWER PLUS 2 ASSEMBLY - V-MOUNT	
DIM BASE BASIC DIM		.XX .XXX			
JUSQU'À 6" UP TO 6"		$\pm .02^\circ$	$\pm .005^\circ$	FORMAT / # PIÈCE GV - GV PART # B 11-04049-974 REVISION -AA TYPE D00	
ENTRE 6" ET 24" ABOVE 6" TO 24"		$\pm .03^\circ$	$\pm .010^\circ$		
PLUS DE 24" ABOVE 24"		$\pm .06^\circ$	$\pm .015^\circ$		
ECHELLE / SCALE: NTS		DATE DE RELÂCHE : RELEASE DATE:		FEUILLE - SHEET 1 - 3	





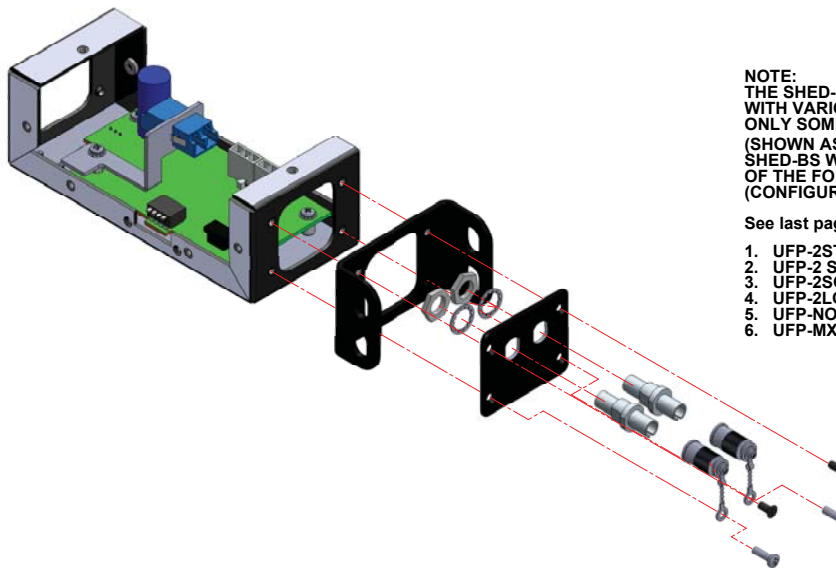
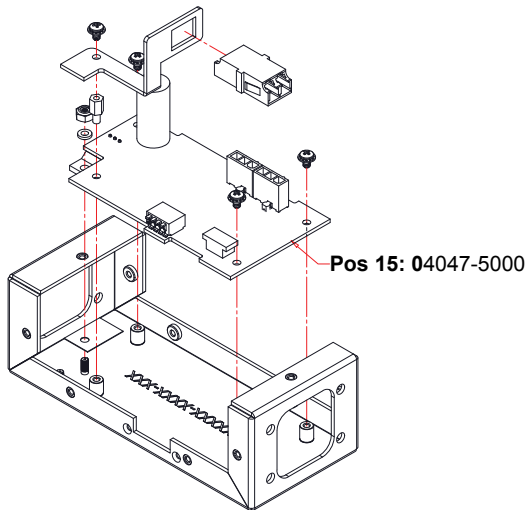
MATERIAU ET FINI DE SURFACE CONFORMES À LA DIRECTIVE ROHS
MATERIAL AND SURFACE FINISH CONFORM TO ROHS DIRECTIVE

		ANG. DIM ±1/2°		PROJECTION 		 grass valley A BELDEN BRAND		
		VARIATION SUR DIM FINALE (UOS) VARIATION ON FINISHED DIM (UOS)				TITRE - TITLE ASSEMBLAGE POWER PLUS 2 - V-MOUNT POWER PLUS 2 ASSEMBLY - V-MOUNT		
VÉRIFIÉ PAR : CHECKED BY:		DIM BASE BASIC DIM		.XX .XXX				
DATE VÉRIFICATION : CHECK DATE		JUSQU'À 6° UP TO 6°		±.02°	±.005°	FORMAT # PIÈCE GV - GV PART # B 11-04049-974 -AA -D00		
CONCEPTEUR : H. RICARD DESIGNER:		ENTRE 6° ET 24° ABOVE 6° TO 24°		±.03°	±.010°			
DATE : 2016-03-03		PLUS DE 24° ABOVE 24°		±.06°	±.015°	ECHELLE : NTS DATE DE RELÂCHE : SCALE RELEASE DATE:		
3		2		1				

SHED-BS - Universal SMPTE Hybrid Elimination Device CCU Side

List of Field Replacable Units (FRUs):


Pos	Part Number	Description
15	04047-5000	PCBA SHED-BS UNIVERSAL WITH DIP SWITCH

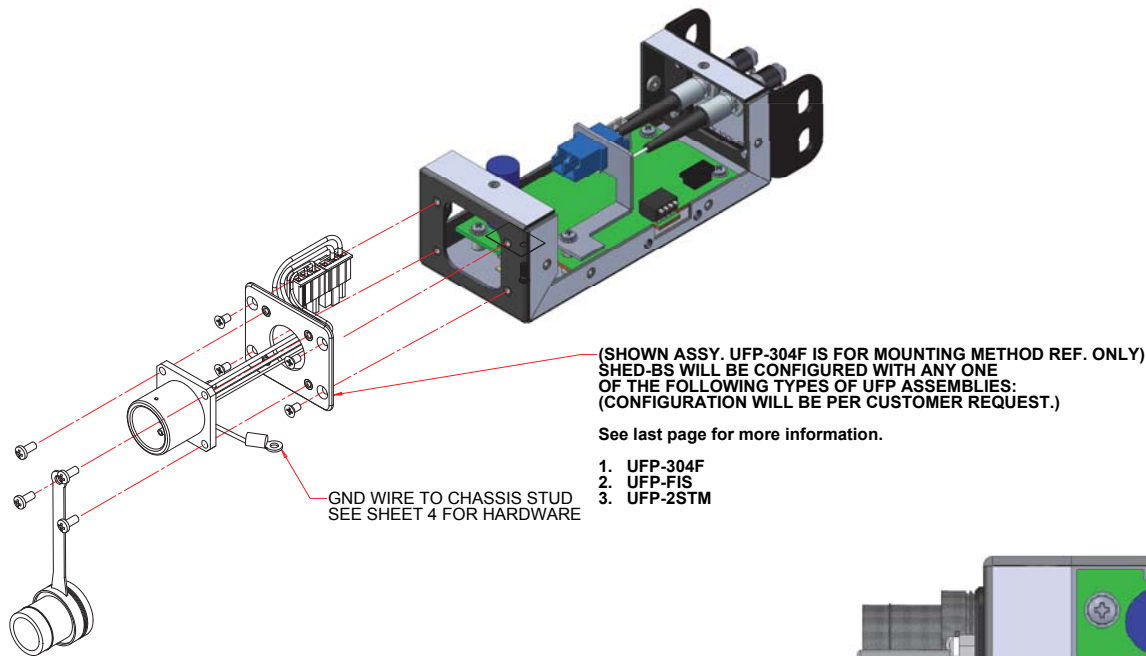


NOTE:
THE SHED-BS MAY BE CONFIGURED WITH VARIOUS UFP END CONNECTOR ASSEMBLIES. ONLY SOME CONFIGURATIONS ARE SHOWN IN THIS DOCUMENT. (SHOWN ASSY. UFP-2ST IS FOR MOUNTING METHOD REF. ONLY) SHED-BS WILL BE CONFIGURED WITH ANY ONE OF THE FOLLOWING TYPES OF UFP ASSEMBLIES: (CONFIGURATION WILL BE PER CUSTOMER REQUEST.)

See last page for more information.

1. UFP-2ST
2. UFP-2 SC
3. UFP-2SCA
4. UFP-2LC
5. UFP-NOC2
6. UFP-MX2

ALL MATERIALS, HARDWARE, FINISH, PAINT ETC. MUST BE ROHS COMPLIANT.		UNLESS OTHERWISE SPECIFIED: MACHINED HOLE TOLERANCES: .001 TO .040 ±.001 .041 TO .125 ±.0015 .126 TO .250 ±.002 .251 TO .500 ±.0025 .501 TO .750 ±.0035		CONTR. NO.			
MATERIAL		MACH FINISHED OR BETTER REMOVE ALL BURRS AND BREAK SHARP EDGES .003 MAX.		DRN		TITLE	
FINISH		ALL THREADS (EXTERNAL & INTERNAL) SHALL BE CLASS 1 UNFRED THREAD FORM AS DEFINED IN ASME B9.19-1974 (FED. SPEC. 95) THREAD STANDARDS FOR FED. SERVICES		CHK		SHED -BS	
DIMENSIONS ARE IN INCHES TOL .XX ±.015 .XXX ±.005 ANGLE 1°		DO NOT SCALE DRAWING		ENGR		DOC. NO. 4047-97D00-201	
				ENGR		PART NO. SHED-BS	
				MFG		SCALE: 1:1	
				QA		SHEET 2 OF 4	
				APPROVED		SIZE D	

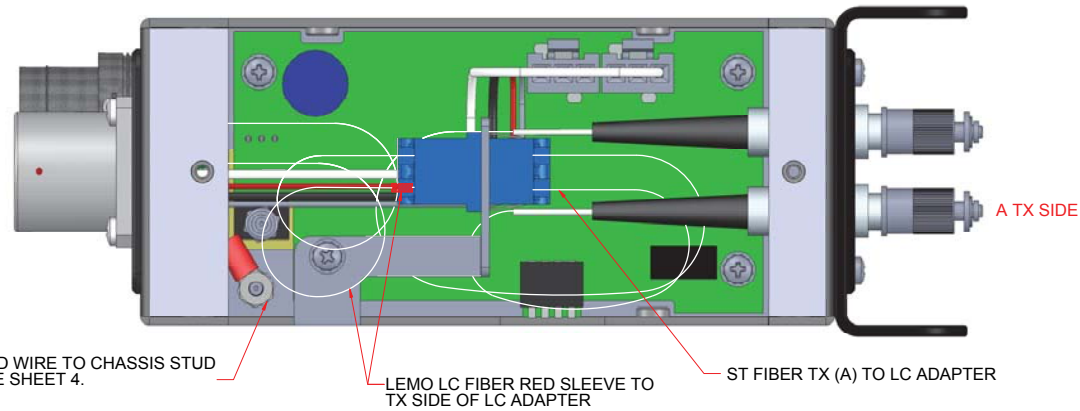


(SHOWN ASSY. UFP-304F IS FOR MOUNTING METHOD REF. ONLY)
SHED-BS WILL BE CONFIGURED WITH ANY ONE
OF THE FOLLOWING TYPES OF UFP ASSEMBLIES:
(CONFIGURATION WILL BE PER CUSTOMER REQUEST.)

See last page for more information.

1. UFP-304F
2. UFP-FIS
3. UFP-2STM

GND WIRE TO CHASSIS STUD
SEE SHEET 4 FOR HARDWARE




GND WIRE TO CHASSIS STUD
SEE SHEET 4.

LEMO LC FIBER RED SLEEVE TO
TX SIDE OF LC ADAPTER

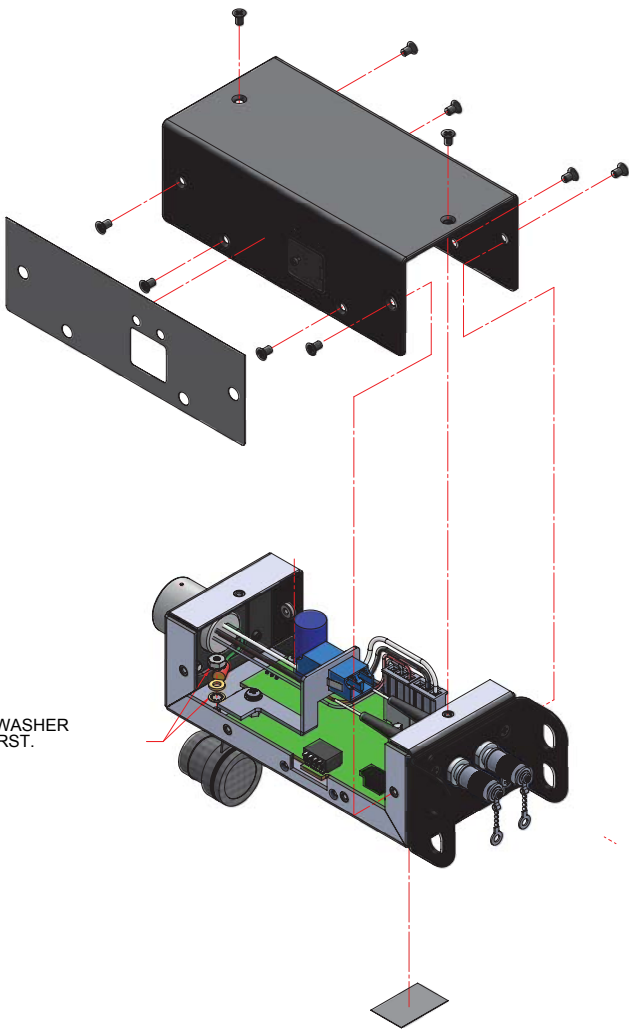
ST FIBER TX (A) TO LC ADAPTER

A TX SIDE

ALL MATERIALS, HARDWARE, FINISH, PAINT ETC. MUST BE ROHS COMPLIANT.		UNLESS OTHERWISE SPECIFIED MACHINED HOLE TOLERANCES	CONTR. NO.	 SHED-BS	
MATERIAL		.001 TO .040 ±.001 .041 TO .125 ±.0015 .126 TO .250 ±.002 .251 TO .500 ±.0025 .501 TO .750 ±.0035	DRN CHK ENGR ENGR MFG QA		
FINISH		DASH FINISHES OR BETTER REMOVE ALL BURRS AND BREAK SHARP EDGES .003 MAX.	APPROVED	DOC. NO. 4047-97D00-201	
DIMENSIONS ARE IN INCHES TOL. XX ±.015 .XXX ±.005 ANGLE 1°		ALL THREADS (EXTERNAL & INTERNAL) SHALL BE CLASS 1 UNIFIED THREAD FORMS AS DEFINED IN ASME B1.1 THREAD STANDARDS FOR FED. SERVICES DO NOT SCALE DRAWING		PART NO. SHED-BS	
				SCALE: 1:1	SHEET 3 OF 4
					SIZE D

THIS DOCUMENT AND THE INFORMATION CONTAINED HEREIN MAY NOT BE COPIED, USED OR DISCLOSED IN WHOLE OR IN PART EXCEPT WITH THE PRIOR WRITTEN PERMISSION OF T.F.S. OR, IF THIS DOCUMENT HAS BEEN REPRODUCED UNDER A CONTRACT WITH ANOTHER PARTY AS EXPRESSLY AUTHORIZED UNDER THAT CONTRACT, IT IS SUPPLIED WITHOUT LIABILITY FOR ERRORS OR OMISSIONS.

NUT
INSERT LOCK WASHER
ONTO STUD FIRST.

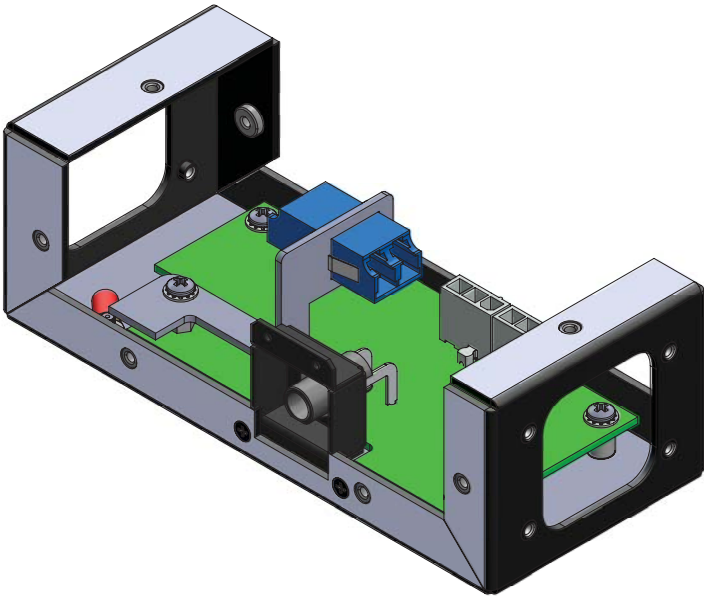
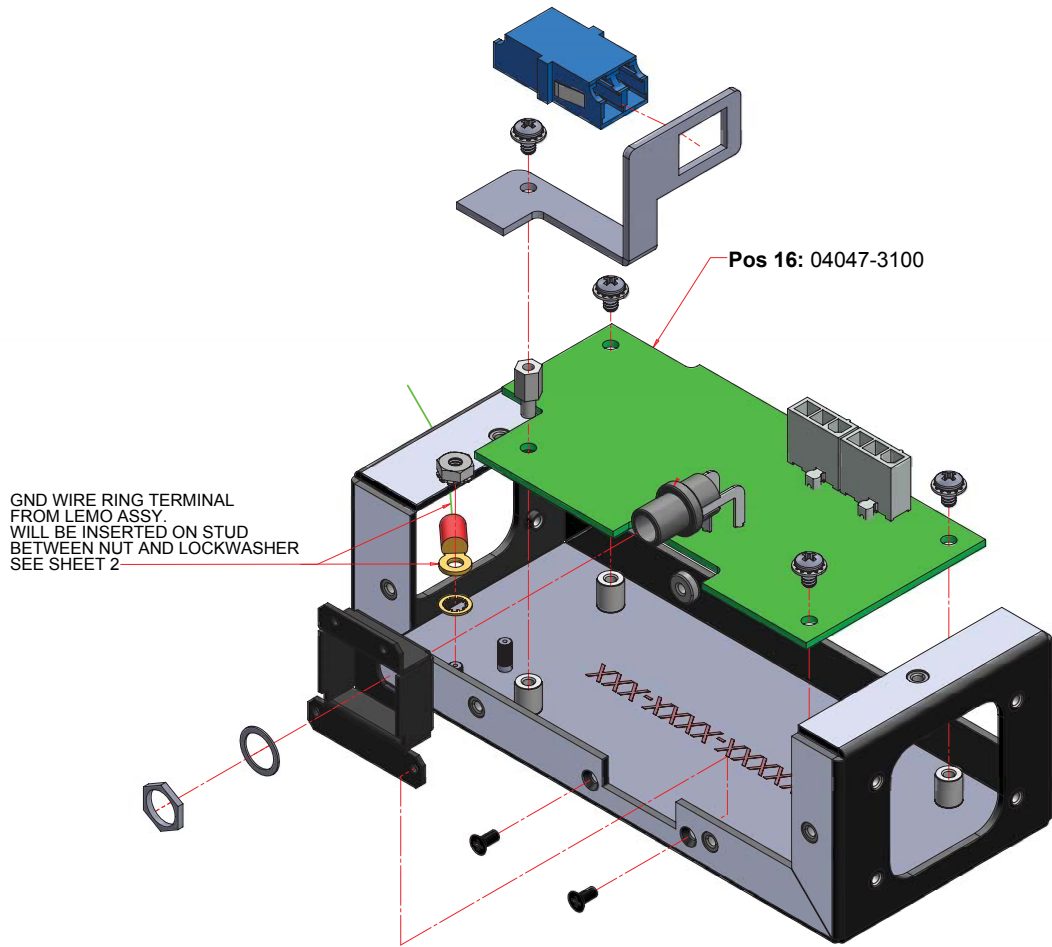



ALL MATERIALS, HARDWARE, FINISH, PAINT ETC. MUST BE ROHS COMPLIANT.		UNLESS OTHERWISE SPECIFIED MACHINED HOLE TOLERANCES .001 TO .040 ±.001 .041 TO .125 ±.0015 .126 TO .250 ±.002 .251 TO .500 ±.0025 .501 TO .750 ±.0035		CONTR. NO.		TITLE	
				DRN	JCURINI		10/09/14
MATERIAL				CHK	JCURINI	SHED-BS	
				ENGR	JCURINI		10/09/14
FINISH				ENGR		DOC. NO. 4047-97D00-201	
				MFG			
DIMENSIONS ARE IN INCHES TOL .XX ±.015 .XXX ±.005 ANGLE ±1°				QA		PART NO. SHED-BS	
				APPROVED			
		DO NOT SCALE DRAWING		SCALE: 1:1		SHEET 4 OF 4	SIZE D

SHED-C - Universal SMPTE Hybrid Elimination Device Camera Side

List of Field Replacable Units (FRUs):

Pos	Part Number	Description
15	04047-3100	PCBA SHED-C 10V REGULATOR BOARD

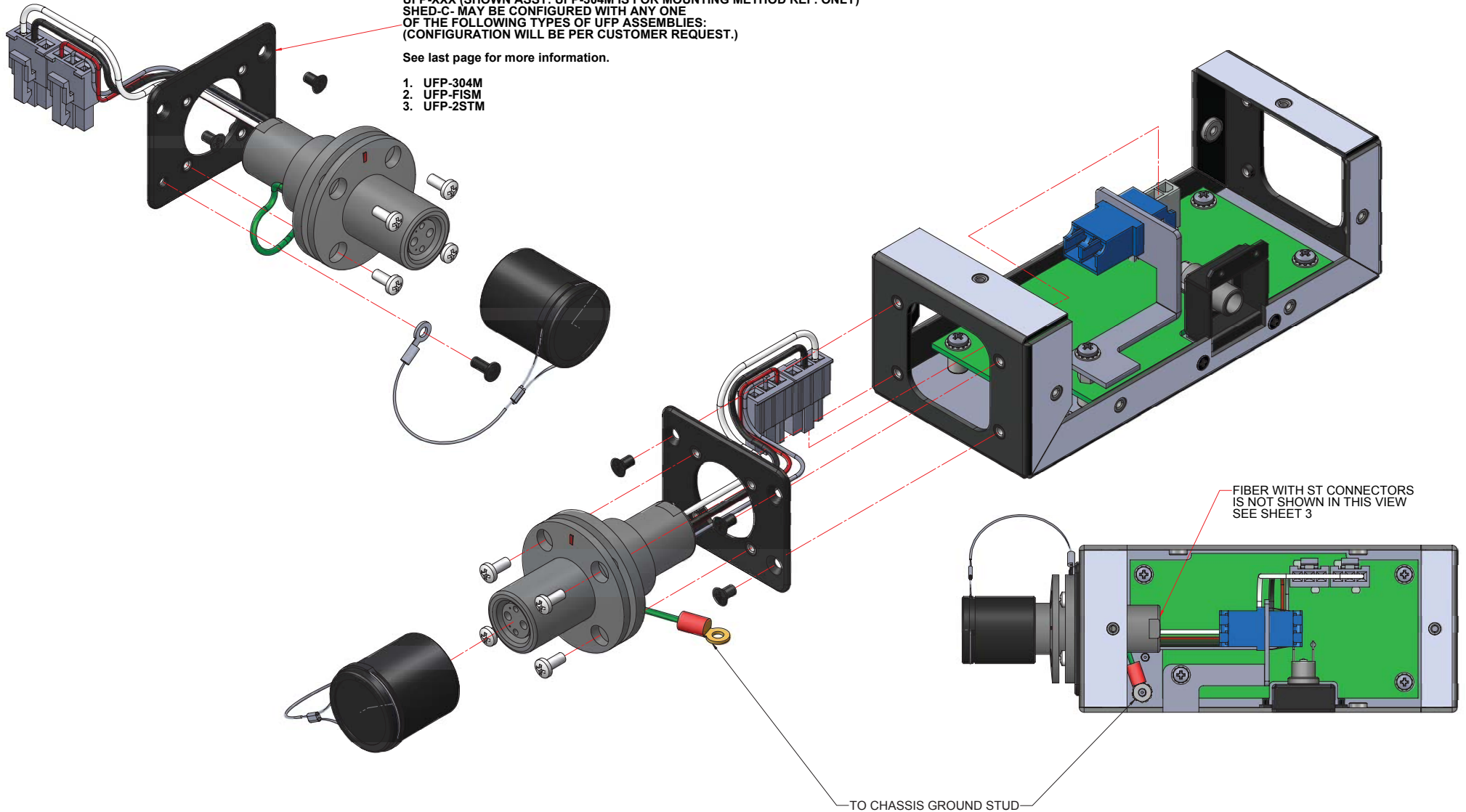



ALL MATERIALS, HARDWARE, FINISH, PAINT ETC. MUST BE ROHS COMPLIANT.		UNLESS OTHERWISE SPECIFIED MACHINED HOLE TOLERANCES .001 TO .040 ±.001 .041 TO .125 ±.0015 .126 TO .250 ±.002 .251 TO .500 ±.0025 .501 TO .750 ±.0035		CONTR. NO.		 TITLE SHED-C	
				DIN	JCURINI		10/09/14
				CHK			
				ENGR	JCURINI		10/09/14
MATERIAL				ENGR			
FINISH		MACH FINISHES OR BETTER REMOVE ALL BURRS AND BREAK SHARP EDGES .003 MAX.		MFG			
				QA		DOC. NO. 4047-96D00-103	
				APPROVED		PART NO. SHED-C	
DIMENSIONS ARE IN INCHES TOL .XX ±.015 .XXX ±.005 ANGLE ±1°		DO NOT SCALE DRAWING		SCALE: 1:1		SHEET 1 OF 4	
						SIZE D	

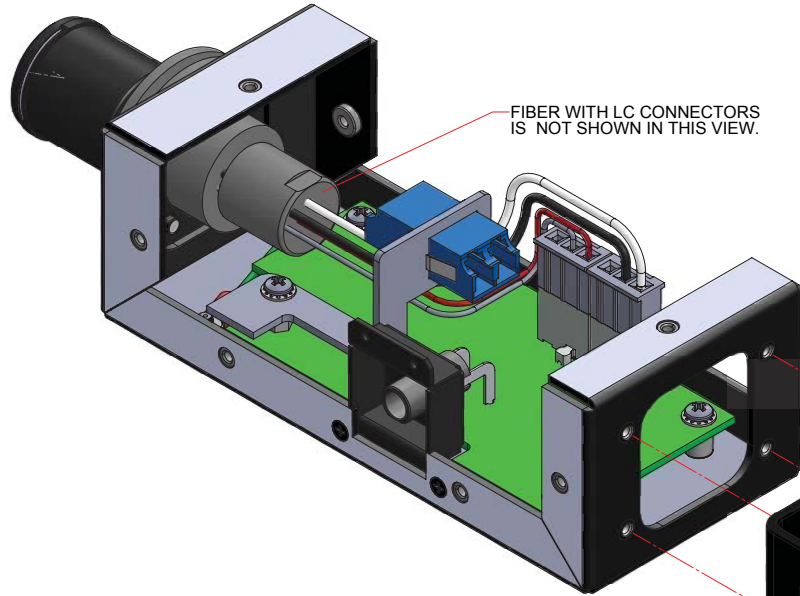
UFP-XXX (SHOWN ASSY. UFP-304M IS FOR MOUNTING METHOD REF. ONLY)
SHED-C MAY BE CONFIGURED WITH ANY ONE
OF THE FOLLOWING TYPES OF UFP ASSEMBLIES:
(CONFIGURATION WILL BE PER CUSTOMER REQUEST.)

See last page for more information.

1. UFP-304M
2. UFP-FISM
3. UFP-2STM



ALL MATERIALS, HARDWARE, FINISH, PAINT ETC. MUST BE ROHS COMPLIANT.	UNLESS OTHERWISE SPECIFIED		CONTR. NO.				
	MACHINED HOLE TOLERANCES		DRN	JCURINI		TITLE SHED-C	
	.001 TO .040	± .001	CHK				
	.041 TO .125	± .0015	ENGR	JCURINI			
	.126 TO .250	± .002	ENGR				
.251 TO .500	± .003	MFG					
MATERIAL	501 TO .750 ± .0035		QA		DOC. NO. 4047-96D00-103 PART NO. SHED-C		
FINISH	TACK FINISH OR BETTER REMOVE ALL BURRS AND BREAK SHARP EDGES .003 MAX		APPROVED			SCALE: 1:1 SHEET 2 OF 4	
	ALL THREADS (EXTERNAL & INTERNAL) SHALL BE CLASS 1 UNFINISHED THREAD DO AS DEFINED IN HIS SPEC. SHEETS FOLLOW STANDARD (FOR F.T.D. SERVICES)						SIZE D
	DO NOT SCALE DRAWING						



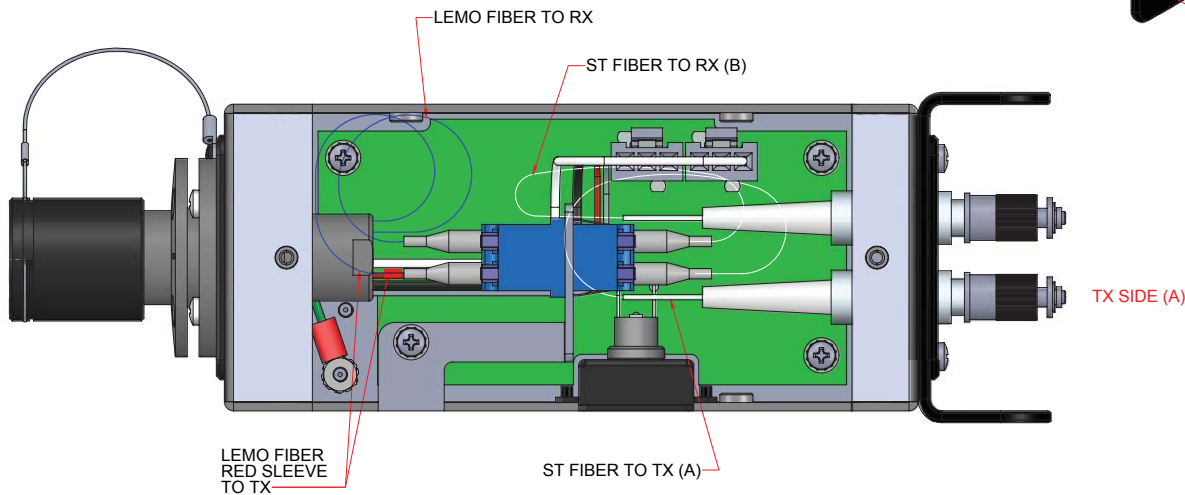
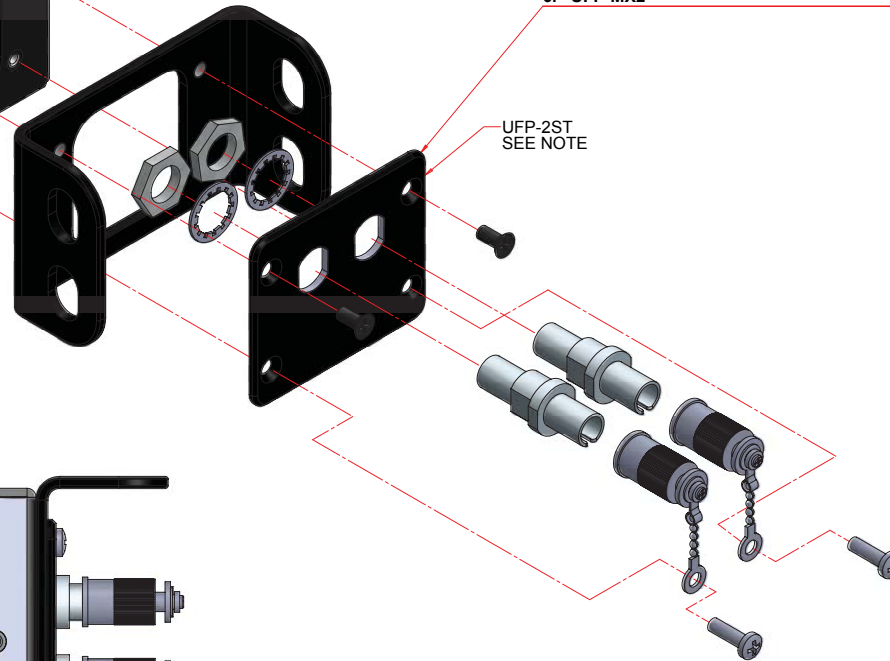
NOTE:



UFP-XXX (SHOWN ASSY. UFP-2ST IS FOR MOUNTING METHOD REF. ONLY)
SHED-C-XXX MAY BE CONFIGURED WITH ANY ONE
OF THE FOLLOWING TYPES OF UFP ASSEMBLIES:
(CONFIGURATION WILL BE PER CUSTOMER REQUEST.)

See last page for more information.

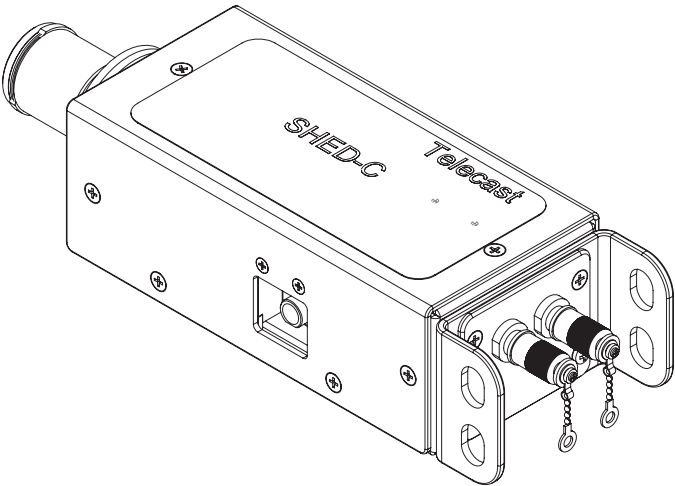
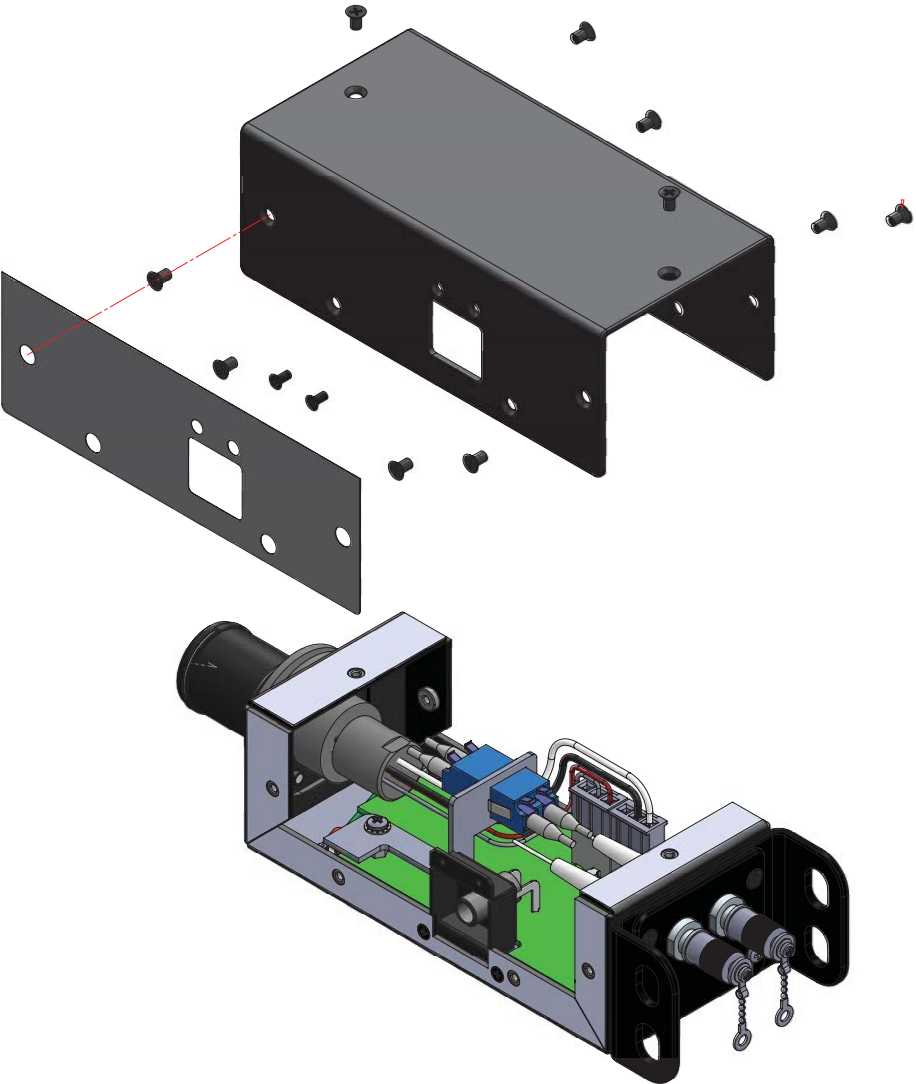
1. UFP-2ST
2. UFP-2 SC
3. UFP-2SCA
4. UFP-2LC
5. UFP-NOC2
6. UFP-MX2


NOTE:
THE SHED-C MAY BE CONFIGURED
WITH VARIOUS END CONNECTORS.
ONLY SOME CONFIGURATIONS ARE SHOWN
IN THIS DOCUMENT.



ALL MATERIALS, HARDWARE, FINISH, PAINT ETC. MUST BE ROHS COMPLIANT.		UNLESS OTHERWISE SPECIFIED: MACHINED HOLE TOLERANCES		CONTR. NO.		 grass valley  BELDON	TITLE SHED-C	
		.001 TO .040 ± .001 .041 TO .125 ± .0015 .126 TO .250 ± .002 .251 TO .500 ± .0025 .501 TO .750 ± .0035		DRN	JCURINI			10/09/14
				CHK				
				ENGR	JCURINI			10/09/14
				ENGR				
MATERIAL			MACH. FINISHED OR BETTER REMOVE ALL BURRS AND BREAK SHARP EDGES .003 MAX.		QA			
FINISH					MFG			
DIMENSIONS ARE IN INCHES TOL. XX ± .015 XXX ± .005 ANGLE 1°		ALL THREADS (EXTERNAL & INTERNAL) SHALL BE CLASS 1 UNIFIED THREAD FORM AS DEFINED IN AISI S287. THREAD STANDARDS FOR FED. SERVICES		APPROVED		DOC. NO.	4047-96D00-103	
						PART NO.	SHED-C	
						SCALE: 1:1		
						SHEET 3 OF 4		

THIS DOCUMENT AND THE INFORMATION CONTAINED HEREIN MAY NOT BE COPIED, USED OR DISCLOSED IN WHOLE OR IN PART EXCEPT WITH THE PRIOR WRITTEN PERMISSION OF T.F.S. OR, IF THIS DOCUMENT HAS BEEN REPRODUCED UNDER A CONTRACT WITH ANOTHER PARTY AS EXPRESSLY AUTHORIZED UNDER THAT CONTRACT, IT IS SUPPLIED WITHOUT LIABILITY FOR ERRORS OR OMISSIONS.

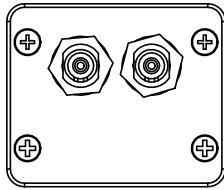
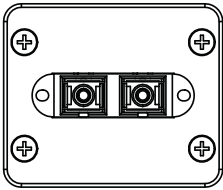
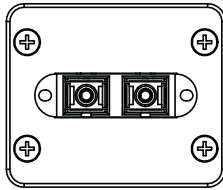
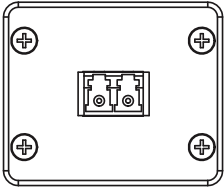
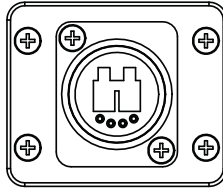
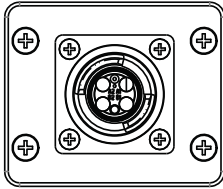
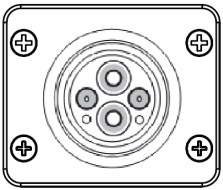
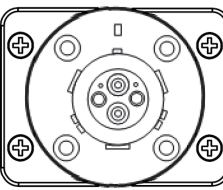
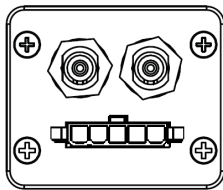
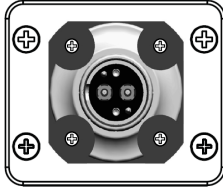
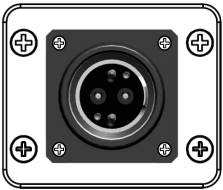


ALL MATERIALS, HARDWARE, FINISH, PAINT ETC. MUST BE ROHS COMPLIANT.		UNLESS OTHERWISE SPECIFIED: MACHINED HOLE TOLERANCES		CONTR. NO.		
		.001 TO .040 ±.001 .041 TO .125 ±.0015 .126 TO .250 ±.002 .251 TO .500 ±.0025 .501 TO .750 ±.0035		DRN	JCURINI	10/09/14
MATERIAL		TATCH FINISHES OR BETTER REMOVE ALL BURRS AND BREAK SHARP EDGES .003 MAX.		CHK	JCURINI	10/09/14
FINISH		ALL THREADS (EXTERNAL & INTERNAL) SHALL BE CLASS 8 UNIFIED THREAD FORM AS DEFINED IN AISI S28.7-90 THREAD STANDARDS FOR FED. SERVICES		ENGR	JCURINI	10/09/14
DIMENSIONS ARE IN INCHES TOL .XX ±.015 .XXX ±.005 ANGLE ±1°		DO NOT SCALE DRAWING		ENGR		
				MFG		
				QA		
				APPROVED		DOC. NO. 4047-96D00-103
						PART NO. SHED-C
						SCALE: 1:1
						SHEET 4 OF 4
						SIZE D

UFP Universal Fiber Plate

List of Field Replacable Units (FRUs):

Pos	Part Number	Description
01	UFP-2STSM	Universal Fiber Plate with 2 STs both SingleMode
02	UFP-2SC	2 SC fiber, ultra polished
03	UFP-2SCA	2 SC fiber, angle polished
04	UFP-2LC	Dual LC connector
05	UFP-NOC2	Neutrik OpticalCon Duo 2 Fibers
06	UFP-MX2	MX dual fiber
07	UFP-304F	Universal fiber panel - SMPTE 304 FEMALE
08	UFP-304M	Universal fiber panel - SMPTE 304 MALE
09	UFP-2STM	Universal fiber panel - 2 ST with 5pin Molex connectors
10	UFP-FISM	Universal fiber panel - FISCHER MALE HYBRID
11	UFP-FIS	Universal fiber panel - FISHER FEMALE HYBRID

		
" #, G8BŽ2STM	" \$, G8BŽ2SC	" % G8BŽ2SCA
		
" & G8BŽ2LC	" ', G8BŽNOC2	" (, G8BŽMX2
		
"), G8BŽ304F	" *, G8BŽ4M	" +, UFP-2STM
		
" #", UFP-FISM	" ##, UFP-FIS	