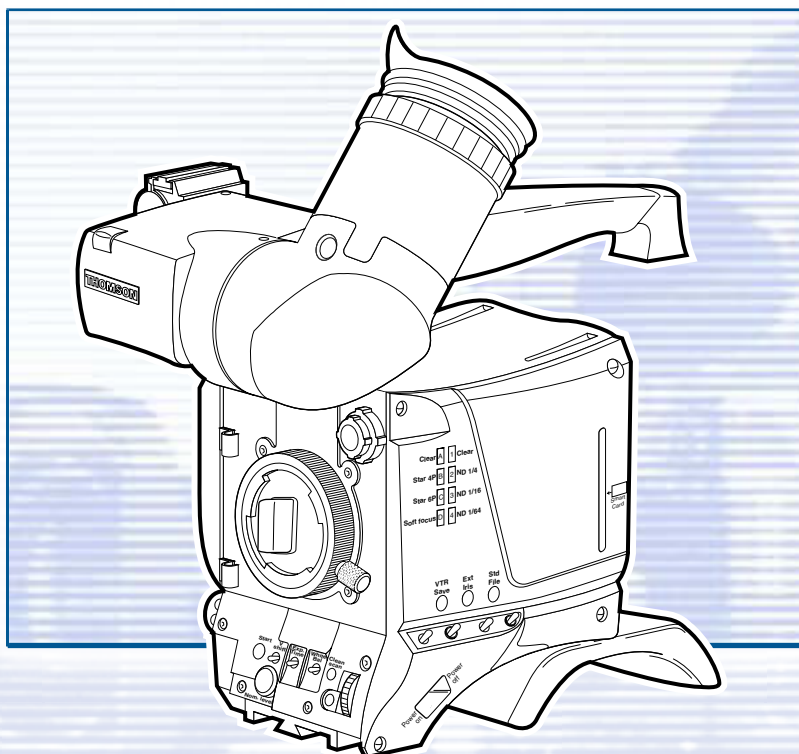


LDK 6000

Native Multi-format
HDTV Camera Head



Technical Manual

3922 496 48781 St.01

Declaration of Conformity

We, Thomson Broadcast Solutions Nederland B.V., Kapittelweg 10, 4827 HG Breda, The Netherlands declare under our sole responsibility that this product is in compliance with the following standards:

- EN60065 : Safety
- EN55103-1 : EMC (Emission)
- EN55103-2 : EMC (Immunity)

following the provisions of:

- a. the Safety Directives 73/23/EEC and 93/68/EEC
- b. the EMC Directives 89/336/EEC and 93/68/EEC

FCC Class A Statement

This product generates, uses, and can radiate radio frequency energy and if not installed and used in accordance with the instructions, may cause interference to radio communications.

It has been tested and found to comply with the limits for a class A computing device pursuant to Subpart J of part 15 of FCC rules, which are designed to provide reasonable protection against such interference when operated in a commercial environment.

Operation of this product in a residential area is likely to cause interference in which case the user at his own expense will be required to take whatever measures may be required to correct the interference.

Copyright

Für diese Unterlage behalten wir uns alle Rechte vor (Gemäß DIN 34). Technische Änderungen im Zuge der Weiterentwicklung vorbehalten.

Copying of this document and giving it to others, and the use or communication of the contents thereof, are forbidden without express authority. Offenders are liable to the payment of damages. All rights are reserved in the event of the grant of a patent or the registration of a utility model or design. Liable to technical alterations in the course of further development.

Toute communication ou reproduction de ce document, toute exploitation ou communication de son contenu sont interdites, sauf autorisation expresse. Tout manquement à cette règle est illicite et expose son auteur au versement de dommages et intérêts. Tous nos droits sont réservés pour le cas de la délivrance d'un modèle d'utilité. Sous réserve de modification au cours de l'évolution technique.

LDK 6000 Camera Head

Technical Manual

Contents

About This Manual	ii		
Safety Instructions	1-1	Adjustments	4-1
Safety Summary	1-2	Introduction	4-2
Cautions and Warnings	1-2	Test Equipment	4-3
Earthing	1-3	Set-up Instructions	4-3
Installation	2-1	Video ADC Automatic Calibration	4-4
Packing/Unpacking	2-2	Pre-processor Calibration	4-4
Attaching an Adapter	2-3	Sawtooth Calibration	4-4
Detaching an Adapter	2-3	Flare Adjustment	4-5
Hardware Customization	2-4	Software Download	4-5
Lens matching	2-4	3200K Adjustment	4-5
Connectors and Cables	2-5	Video Monitoring Adjustment	4-7
Specifications LDK 6000	2-8	Wiring Diagrams	5-1
Dimensions	2-9	Mechanical Exploded Views	6-1
Replacements	3-1	HD Camera head	6-2
Introduction	3-2	Camera head basic	6-3
Printed circuit boards	3-2	Cover left assy	6-4
Handgrip	3-3	Cover right assy	6-5
Front unit	3-4	Shoulderpad assy	6-6
		Handgrip assy	6-7

About This Manual

Service policy

The LDK 6000 is a sophisticated camera head containing state-of-the-art electronic components which are designed to provide long-life operation without the need for maintenance. With this in mind, the service policy of Thomson Multimedia Broadcast Solutions endeavours to ensure that help will be quickly on hand in the unlikely event of anything going wrong. The guiding principles of the Thomson Multimedia Broadcast Solutions first line maintenance philosophy are speed and cost effectiveness. First line maintenance is dedicated to keeping your camera operational, despite a fault, by module replacement and the replacement of minor mechanical parts by the user.

Purpose of this manual

The provision of correct information is the first step in ensuring the operational integrity of the camera. Information on the operation of the camera is to be found in the Operators's Manual.

This technical manual is an integral part of the service policy. It ensures that you will be able to install and set-up your camera to meet the requirements of your environment. This information on the installation of the camera is contained in Section 2 of the manual. The remaining sections of the manual provide first line service information so that suitably qualified service personnel can detect and repair faults, normally by module replacement.

Because of the complexity of some of the components, second line service can only be carried out at the specially equipped service centres and information concerning second line maintenance is not supplied in this manual.

Intended audience

The manual is intended as a guide to those with a working knowledge of camera systems and installation techniques. The first line detection and repair of faults requires a general knowledge of test and measurement techniques.

Structure of this manual

The manual is divided into seven different sections:

Section 1: Safety Instructions

Outlines the safety precautions that must be taken when using the camera.

Section 2: Installation.

Gives instructions on the integration of the camera into the operating environment and the customization of certain hardware functions

Section 3: Replacements.

Gives information on the replacement of components at first line level.

Section 4: Adjustments.

Contains the adjustment procedures to be followed to obtain the best performance.

Section 5: Wiring Diagrams

Section 6: Exploded Views

Identification and Status

To indicate the status of a drawing, a box with the numbers 0 to 9 is shown in the bottom-right of the drawing. The number that is crossed-out is the status number of the drawing. For example, in the illustration below, the status is 1.

0	1	2	3	4
5	6	7	8	9

A sticker is used on the units themselves to identify them and to indicate their status. For example, in the illustration below, the top line is the 12-digit number that identifies the unit type.

3922	406	88991
00121107	00	01

The first four digits of the number on the second line represent a date code (year, week); the next four digits represent the serial number for that week.

The number in the grey area indicates the status of the unit. The last two digits represent the number that will be given to the next status. However, if these two digits are contained in a box, then this is the current status. For example, in the illustration above, the current status of the unit is 01.

Line 1	→	3922 407 00000
Line 2	→	123456AA0101
Line 3	→	VR/0123456789

Line 1

This is the code number of the printed circuit board assy. (PCB)

Line 2

This is the serial number of the PCB. The first 6 digits and the 2 letters are for internal use. The last four digits represent the date of the manufacturing: wwyy.

Example:

123456AA1402 means the PCB is manufactured in week 14 of the year 2002.

Line 3

This is the status of the PCB.

The digit after the first slash is the status. If there is no number before the slash, it means that the status is less than 10, a 1 before the slash means the status is between 10 and 19, a 2 before the slash means between 20 and 29 etc.

Example:

VR4567891012 means status 4

VR3/78901234 means status 37.

Example of LDK number:

LDK 4501/01 means 8926 **450 10101**

LDK 4500/00 means 8926 **450 00001**

Numbers of printed circuit board assy

- 3922 406 xxxxx or 3922 407 xxxxx

Number (screened in PCB layout) of printed circuit board assy: 3922 411xxxxx. (not a sparepart)

Section 1

Safety Instructions

This section outlines the precautions that must be taken into account when using the LDK 200 camera head.

Contents

Safety Summary	1-2	Earthing	1-3
Cautions and Warnings	1-2		

Safety Summary

This information is intended as a guide for trained and qualified personnel who are aware of the dangers involved in handling potentially hazardous electrical/electronic equipment. It is not intended to contain a complete list of all safety precautions which should be observed by personnel in using this or other electronic equipment.

The installation, maintenance and service of this equipment involves risks both to personnel and equipment and must be performed only by qualified personnel exercising due care.

Personnel engaged in the installation, operation, maintenance or servicing of this equipment are urged to become familiar with First Aid theory and practices.

During installation and operation of this equipment, local building safety and fire protection standards must be observed.

Before connecting the equipment to the power supply of the installation, the proper functioning of the protective earth lead of the installation needs to be verified.

Whenever it is likely that safe operation is impaired, the apparatus must be made inoperative and secured against any unintended operation. The appropriate servicing authority must then be informed. For example, safety is likely to be impaired if the apparatus fails to perform the intended function or shows visible damage.

This product has been designed and tested according to EN60065.

Cautions and Warnings

When performing service, be sure to read and comply with the warning and caution notices appearing in the manuals. Warnings indicate danger that requires correct procedures or practices to prevent death or injury to personnel. Cautions indicate procedures or practices that should be followed to prevent damage or destruction to equipment or property.

WARNING

THE CURRENT AND VOLTAGES PRESENT IN THIS EQUIPMENT ARE DANGEROUS. ALL PERSONNEL MUST AT ALL TIMES FOLLOW THE SAFETY REGULATIONS.

ALWAYS DISCONNECT POWER BEFORE REMOVING COVERS OR PANELS.

ALWAYS DISCHARGE HIGH VOLTAGE POINTS BEFORE SERVICING.

NEVER MAKE INTERNAL ADJUSTMENTS, PERFORM MAINTENANCE OR SERVICE WHEN ALONE OR WHEN FATIGUED.

IN CASE OF AN EMERGENCY ENSURE THAT THE POWER IS DISCONNECTED.

ANY INTERRUPTION OF THE PROTECTION CONDUCTOR INSIDE OR OUTSIDE THE APPARATUS, OR DISCONNECTION OF THE PROTECTIVE EARTH TERMINAL, IS LIKELY TO MAKE THE APPARATUS DANGEROUS. INTENTIONAL INTERRUPTION IS PROHIBITED.

FOR SAFETY REASONS THE CPU MUST BE MOUNTED IN A 19-inch RACK WHICH HAS SAFETY COVERS ACCORDING TO IEC65.

WHEN TWO CPUs ARE MOUNTED ABOVE EACH OTHER THE MINIMUM DISTANCE BETWEEN THEM MUST BE 50MM OR THE RACK MUST BE FORCE-AIR COOLED.

USE ONLY FUSES OF THE TYPE AND RATING SPECIFIED.

CAUTION

To prevent risk of overheating, ventilate the product correctly.

Connect the product only to a power source with the specified voltage rating.

Only connect a Triax cable from the LDK 6 camera family to an LDK 6 CPU. Never connect it to any other base station.

Never connect the Triax cable from a camera to a CPU of a different family; never connect the LDK family to the TTV family.

Do not allow system ground currents to exceed 1.5A in the outer shield of the triax cable or 0.2A in other cable shields.

It is strictly prohibited to short circuit the inner and outer shields of a triax cable used to connect a camera to a base station.

Earthing

Symbol	Colour	Explanation
	Red	High voltage terminal at which a voltage, with respect to an other terminal, exists or may be adjusted to 1000V or more.
	Yellow/Black	Live part.
	Yellow/Black	This marking indicates that the operator must refer to an explanation in the Instruction Manual, or that a specific component must be replaced by the component specified in the documentation for safety reasons.
	White/Black	Protective earth (ground) terminal.

Cathode ray tubes

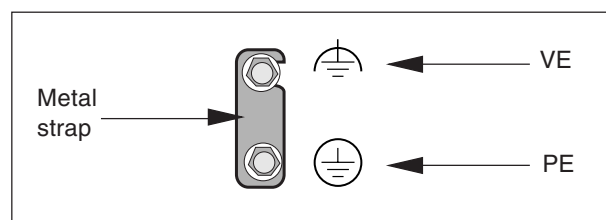
Components marked on the circuit diagram are critical for safety and include those specified to comply with X-ray emission standards for units using cathode ray tubes and those specified for compliance with various regulations regarding spurious radiation emission.

When servicing units that use cathode ray tubes (CRTs), the cathode ray tubes themselves, the high voltage circuits and related circuits are specifically chosen so that they comply with recognized codes pertaining to X-ray emission.

Consequently, when servicing, replace the cathode ray tubes and other parts with specified parts only. Do not attempt to modify these circuits as any unauthorized modification can increase the high voltage value and cause X-ray emission from the cathode ray tube.

Handle the cathode ray tube only when wearing shatterproof goggles and after discharging the high voltage completely.

The rear of a CPU has two separate screw terminals for protective earth (PE) and video earth (VE).



These are normally connected by a metal strap. The protective earth terminal is internally connected to the protective earth conductor of the power cable. If required, the central earth connection wire of the studio can be connected to terminal PE.

In normal circumstances the connection between the protective earth and the video earth should not be broken.

The metal strap may be removed only if the studio (or OB van) is equipped with separate protective and video earth systems. Under these circumstances the video earth terminal must be connected to the central functional earth potential (video earth) of the studio. This earth potential should have functional protective and noiseless earth (FPE) qualities as stated in the VDE regulation 0800/part2. A low impedance interconnection of both earth conductors must be provided at the central studio earthing point.

WARNING

THE UNIT MUST ALWAYS BE CONNECTED TO PROTECTIVE EARTH.

Mains Lead Wiring for UK Users

The wires in the mains lead are coloured in accordance with the following code:

GREEN AND YELLOW	-	EARTH
BLUE	-	NEUTRAL
BROWN	-	LIVE

As the colours of the wires in the mains lead of this apparatus may not correspond with the coloured markings identifying the terminals in your plug proceed as follows:

- The wire coloured GREEN AND YELLOW must be connected to the terminal on the plug marked with the letter E or by the safety earth symbol or coloured GREEN or GREEN AND YELLOW.
- The wire coloured BROWN must be connected to the terminal marked with the letter L or coloured RED.
- The wire coloured BLUE must be connected to the terminal marked with the letter N or coloured BLACK.

Ensure that your equipment is connected correctly - if you are in any doubt consult a qualified electrician.

Section 2

Installation

This section provides information which is relevant when the camera is to be used for the first time. Packing and unpacking instructions together with information on the integration of the camera into your studio system are provided. The procedures for the customization of certain hardware functions and connector information is also provided.

Contents

Packing/Unpacking	2-2	Lens matching	2-4
Attaching an Adapter	2-3	Connectors and Cables	2-5
Detaching an Adapter	2-3	Specifications LDK 6000	2-8
Hardware Customization	2-4	Dimensions	2-9

Packing/Unpacking

Inspect the shipping container for evidence of damage immediately after receipt. If the shipping container or cushioning material is damaged, it should be kept until the contents of the shipment have been checked for completeness and the units have been checked mechanically and electrically.

The shipping container should be placed upright and opened from the top. Remove the cushioning material and lift out the contents.

The contents of the shipment should be checked against the packing list. If the contents are incomplete, if there is mechanical damage or defect, or if the units do not perform correctly when unpacked, notify your Thomson Multimedia Broadcast Solutions sales or service centre within eight days. If the shipping container shows signs of damage or stress, notify the carrier as well.

If a unit is being returned to Thomson Multimedia Broadcast Solutions for servicing, try to use the containers and materials of the original packaging. Attach a tag indicating the type of service required, return address, model number, full serial number and the return number which will be supplied by your Thomson Multimedia Broadcast Solutions service centre.

If the original packing can no longer be used, the following general instructions should be used for repacking with commercially available materials:

- a. Wrap unit in heavy paper or plastic.
- b. Use strong shipping container.
- c. Use a layer of shock-absorbing material around all sides of the unit to provide firm cushioning and prevent movement inside container.
- d. Seal shipping container securely.
- e. Mark shipping container FRAGILE to ensure careful handling.

Attaching an Adapter

The LDK 6000 Camera head is a multi-role camera head that can be used with various adapters. To attach an adapter to the camera proceed as follow:

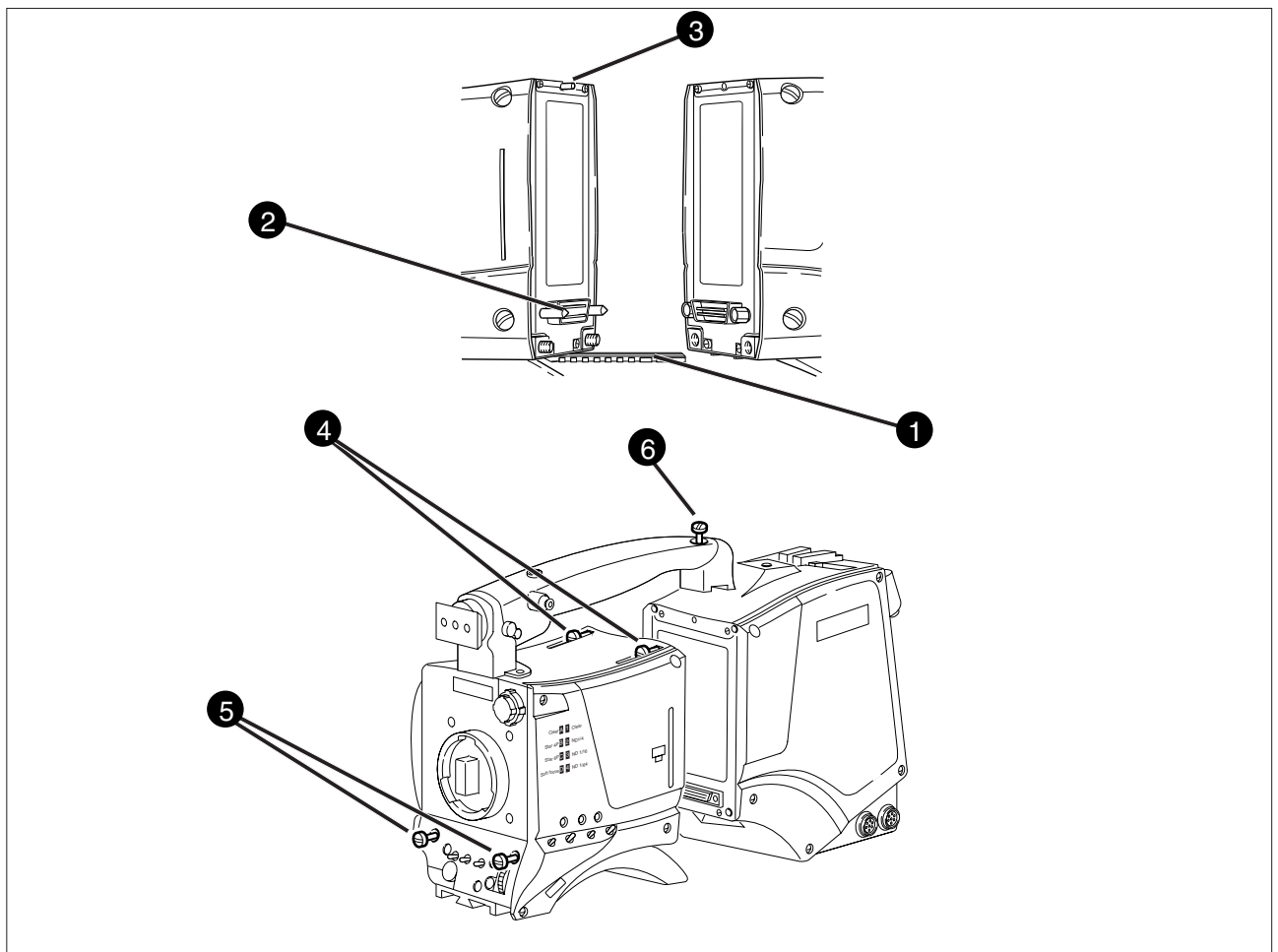
Caution

Be extremely careful with the connectors between the camera head and the adapter. Do not allow the guide pins to damage the pins of the connector.

Caution

Follow these steps in the order given. Tightening the screws in the wrong order could result in mechanical damage to the camera.

- Using the rail (1) on the bottom of the camera head as a guide, fit the guide pins (2) on either side of the connector and the guide pin (3) at the top rear of the camera head into the corresponding slots of the adapter.
- First, tighten the two horizontal screws (4) on the top of camera.
- Next, tighten the two horizontal screws (5) at the front of the camera.
- Lastly, tighten the vertical screw (6) in the handle of the camera.



Detaching an Adapter

To detach an adapter from the camera head follow the steps for attaching it in the reverse order.

Caution

Loosening the screws in the wrong order could result in mechanical damage to the camera.

Note

The procedure is given for the Triax adapter LDK 5460. Follow the same procedure for the other adapters.

The camera head is delivered in a ready-to-use state, however, there are occasions when it might be necessary to re-adjust some functions after, for example, fitting a new lens.

A large number of functions can be set-up using the control facilities of the menu system. In addition to this software set-up there are some functions which can be selected or adjusted internally in the camera.

Refer to the next chapters for instructions.

Location of boards

Unscrew the four screws on the left side panel and swing down the cover.

Front module (1)

Sync monitoring board (2)

Data board (3)

Front driver board (4)

When a camera is supplied with a lens it is not necessary to perform any of the following adjustments as the lens is already matched to the camera. However, if you wish to change to a different type of lens or the lens is not supplied with your camera, back focus, white shading and auto iris adjustment procedures may have to be performed.

- Colour balance.

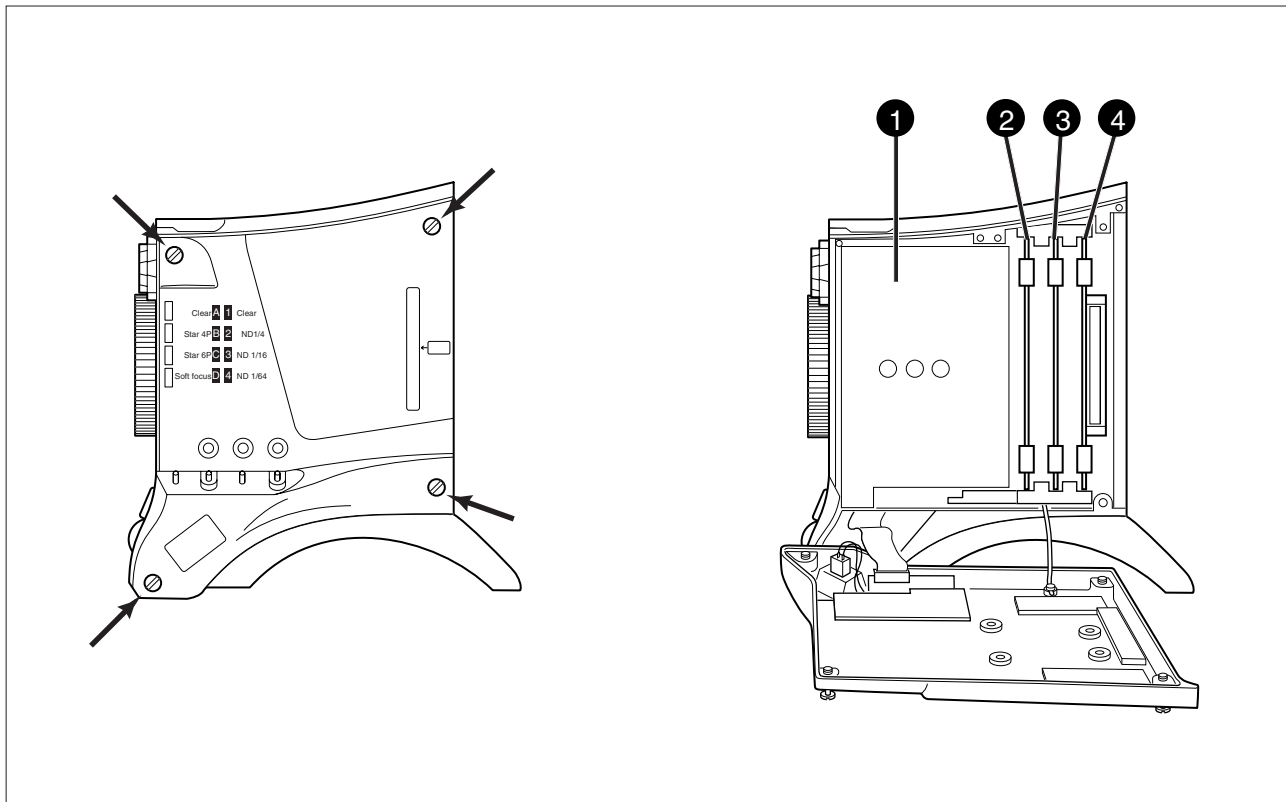
If required, perform the gain adjustment of the preprocessor board and/or white shading adjustment procedures, described in section 4.

- Auto Iris Adjustment

If a different lens either works too slow or overshoots too much with the auto iris control, adjust the potentiometer on the lens to obtain acceptable operation. Refer to the lens documentation.

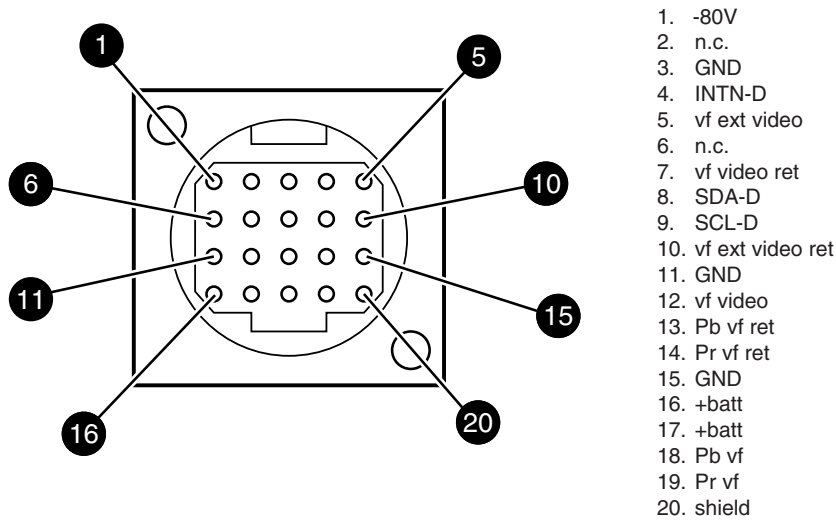
- Back Focus Adjustment

To adjust the back focus of the lens refer to the documentation of the lens.



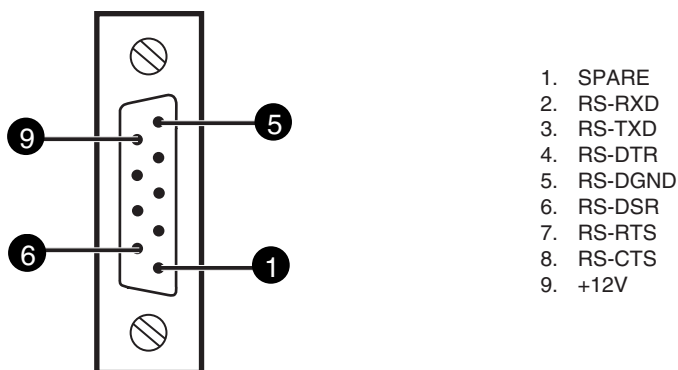
Connectors and Cables

Viewfinder connector



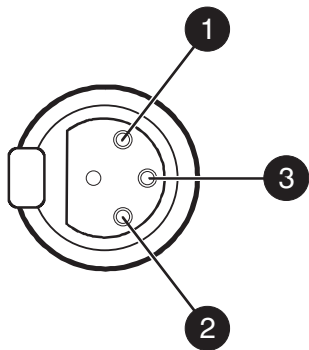
20-pin female; panel view

RS232 connector



9-pin female; panel view

Audio microphone connector

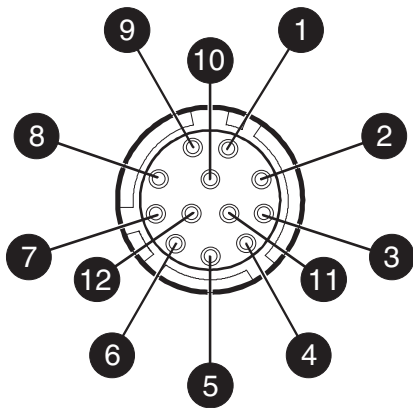


XLR 3-pin female

- 1. Audio Screen
- 2. Audio In
- 3. Audio Return

Microphone impedance >200 ohm
Sensitivity remote controlled via base station:
range: -70 to -28 dBm
Signal at pin 2 of audio input is in phase with
signal at pin 2 of audio output on Base
station

Lens connector



Hirose 12-pin female; panel view

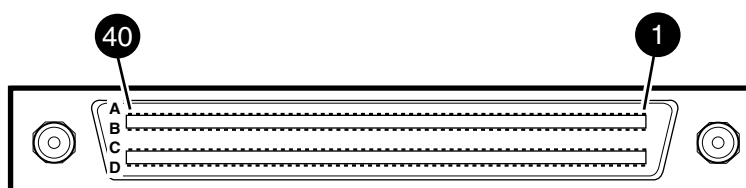
- 1. Ext. Video On/Off
- 2. VTR Trigger Switch
- 3. -batt
- 4. Momentary Iris
- 5. IrisControl
- 6. + batt
- 7. Iris Follow
- 8. Lens Servo
- 9. Range Extender
- 10. Zoom Follow
- 11. Focus follow*
- 12. Spare

* not standard on lens

Panel Connector	Type	Part number	Cable part number
Viewfinder	20-pin Hirose female	5322 214 12544	5322 320 12159 male
Lens	12-pin Hirose female	5322 265 10389	5322 265 41208 male
Audio Mic	3-pin XLR female	5322 267 40523	--
Rs 232	9-pin male	--	--

Docking connector camera (X10)

A row	name	B row	name	C row	name	D row	name
1	lon data	1	lon data N	1	GND	1	+ batt
2	SDA_C	2	SCL_C	2	GND	2	+ batt
3	INTN_C	3	audio indication	3	GND	3	+ batt
4	AB batt sense	4	batt sense	4	GND	4	+ batt
5	adpt id 0	5	adpt id 1	5	GND	5	+ batt
6	adpt id 2	6	adpt id 3	6	GND	6	+ batt
7	cam id 0	7	cam id 1	7	YB9_RET	7	YB8
8	RXD	8	PIP	8	YB9	8	YB8_RET
9	sync	9	blanking	9	YB7_RET	9	YB6
10	white pulse 1	10	white pulse 2	10	YB7	10	YB6_RET
11	colour framing	11	frame reset	11	YB5_RET	11	YB4
12	BS_TDA	12	H lock	12	YB5	12	YB4_RET
13	PIP video	13	PIP video ret	13	YB3_RET	13	YB2
14	BS_TDV	14	BS_TMS	14	YB3	14	YB2_RET
15	adapter vf video	15	adapter vf video ret	15	YB1_RET	15	YB0
16	BS_TCK	16	BS_TRSTN	16	YB1	16	YB0_RET
17	ext video	17	ext video ret	17	GND	17	GND
18	-5V	18	-5V	18	-5V	18	-5V
19	+5V	19	+5V	19	+5V	19	+5V
20	+3.3V	20	+3.3V	20	+3.3V	20	+3.3V
21	+5VD	21	+5VD	21	+5VD	21	+5VD
22	mic Y	22	mic Ys	22	+12VFC	22	+12VFC
23	mic X	23	mic Xs	23	GND	23	GND
24	SHIELD	24	SHIELD_S	24	CR9_RET	24	CR8
25	audio level	25	audio level RET	25	CR9	25	CR8_RET
26	power switch	26	TXD	26	CR7_RET	26	CR6
27	+5VS	27	-5VS	27	CR7	27	CR6_RET
28	Fsync_out	28	Fsync_out ret	28	CR5_RET	28	CR4
29	spare 1	29	spare 2	29	CR5	29	CR4_RET
30	Clock_scaler	30	Clock_scaler_N	30	CR3_RET	30	CR2
31	G9	31	G9 ret	31	CR3	31	CR2_RET
32	G8	32	G8 ret	32	CR1_RET	32	CR0
33	G7	33	G7 ret	33	CR1	33	CR0_RET
34	G6	34	G6 ret	34	GND	34	housing
35	G5	35	G5 ret	35	GND	35	housing
36	G4	36	G4 ret	36	GND	36	housing
37	G3	37	G3 ret	37	n.c	37	
38	G2	38	G2 ret	38	n.c	38	
39	G1	39	G1 ret	39	-80V	39	
40	G0	40	G0 ret	40	-80V	40	



160-pin male; panel view

Specifications LDK 6000

General data

Power requirements
Triax powered or 12V dc
Power consumption
34 W (Head + Triax Adaptor + VF)
Operating temperatures
-20 to +40°C (-4 to +113°F)
Storage temperatures
-20 to +60°C (-4 to +140°F)
Weight (approx.)
4.4 kg (9.7 lbs) incl. 2-inch VF and Multi-Purpose adapter
Dimensions
197 x 117 x 349 (H x W x L in mm.)
TriaxHD cable length
Y/C transmission over 1,000 m. (3,300 ft.) with 14 mm. cable
Viewfinder CRT
2" or 7" monochrome
2" Viewfinder resolution
>600 TV lines (centre)
7" Viewfinder resolution
>800 TV lines (centre)

Camera Head

Pick-up device
3x2/3" Philips HD-DPMTM CCD's,
1080i/720p switchable
3x2/3" Philips HD-FT CCD's,
1080i or 720p
Picture elements
9.2 million pixels 1920 (H) x 4320 (V) effective

HDTV Aspect Ratio
16:9
Temporal frequency
59.94 or 50Hz.
Smear
No vertical smear
Optical system
F1.4 prism system
Optical filters
1st Wheel Clear, 1/4 ND, 1/16 ND, 1/64 ND
2nd Wheel Clear, 4-point star, 6-point star, soft-focus
Electronic filters
3200K, 4700K, 5600K, 7200K, FL,
2AWB presets, Continues Auto White, Colour Filter
Digital quantization
12 bits A to D
Digital signal processing
>22-bits
Sensitivity
2000 lux (186 ft cd) at F7.0 (typical, 1080i mode)
Gain
-6dB to +12dB in 3dB steps (user definable presets)
S/N ratio
52 dB in Y (typical)
Modulation depth
40% at 27 MHz
Exposure control
Down to 1/500 sec.
Clean scanning
50.6 to 125 Hz (at 50 Hz temp. freq.)
61 to 150 Hz (at 59.94 Hz temp. freq.)

Connectors

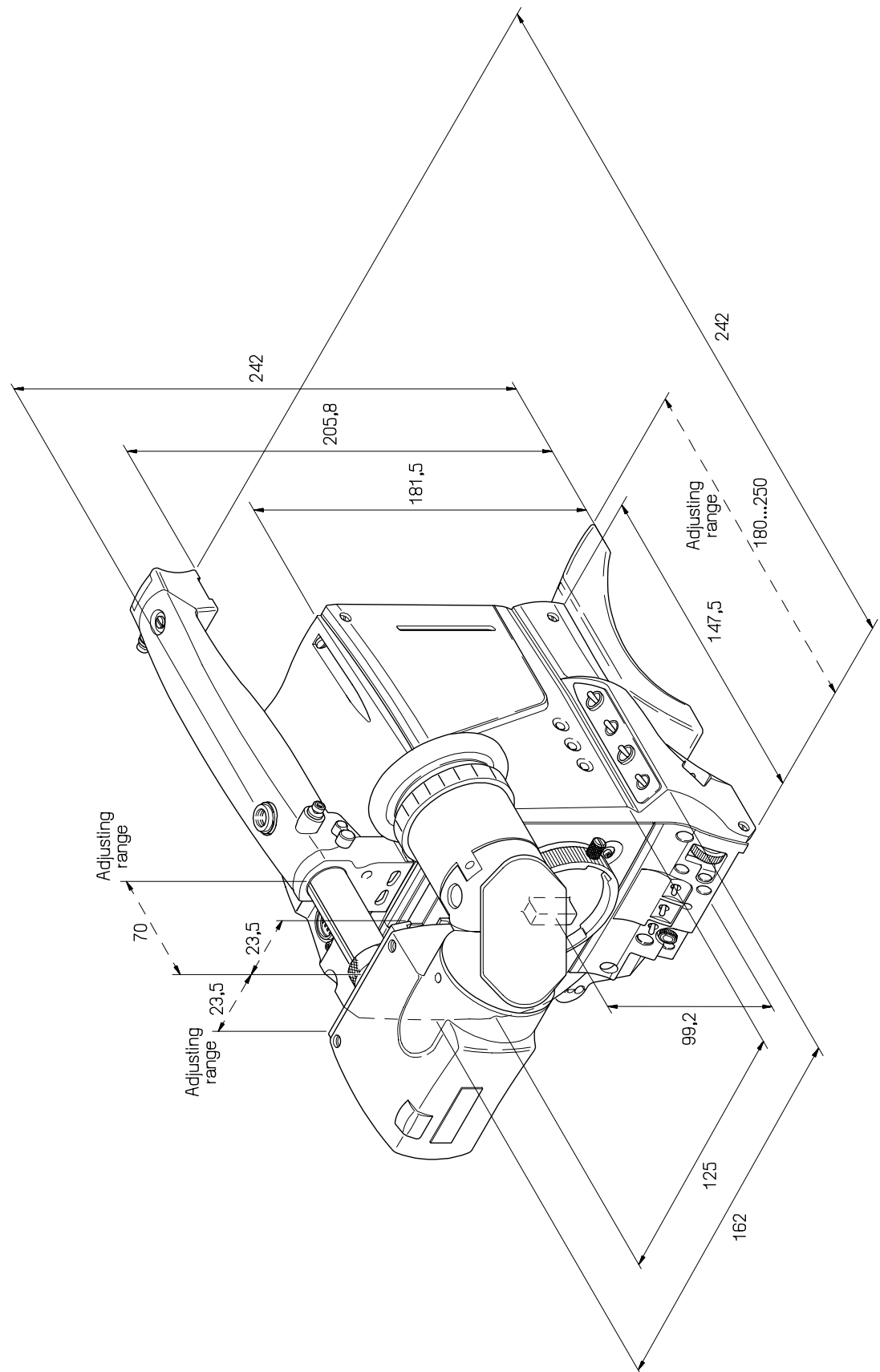
Front microphone In.
1x XLR 3, balanced, +48V, CH1 on HD Base Station
Viewfinder out
20-pin
Lens out
12-pin
Control bus
9-pin, RS232 compatible
Docking connector
160-pin

Supplied Accessories

1x Operator's Manual
1x Technical Manual
1x Owner card
2x User card
1x Rain cover
1x Shoulder strap
1x IR Remote control

These typical specifications are valid for PAL and NTSC systems and are subject to change without notice

Dimensions



Section 3

Replacements

This section gives information on the procedures to follow when replacing printed circuit boards and mechanical components at first line level.

Contents

Introduction	3-2	Handgrip	3-3
Printed circuit boards	3-2	Front unit	3-4

The instructions given in this section are restricted to those modules which can be replaced at the first line service level. These modules include:

- The printed circuit boards
- The handgrip
- The front unit

After a printed circuit board has been replaced it is sometimes necessary to carry out adjustments to match the new boards to your camera and so maintain the performance levels. The relevant adjustment procedures are given in Section 4.

The procedures for removing the modules should be followed in reverse order when remounting the units.

Gaining access to the boards

To access the printed circuit boards remove the left side cover of the camera head as follows:

- Unscrew the four screws on the left side panel.
- Swing down the cover.

Location of boards

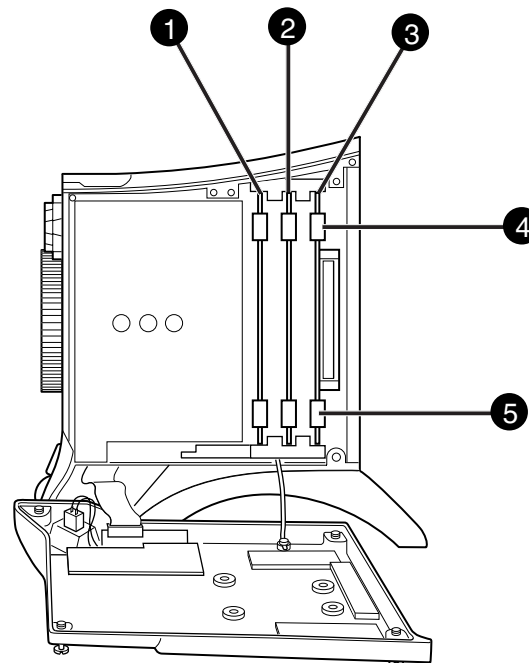
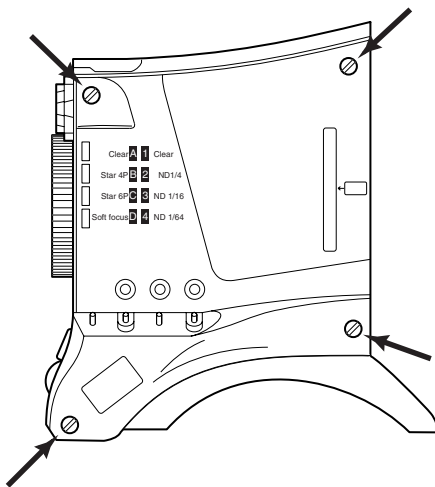
The boards in the camera head are numbered as follows:

- 1 Sync monitoring board
- 2 Data board
- 3 Front driver board

Removing a board

To remove a printed circuit board proceed as follows:

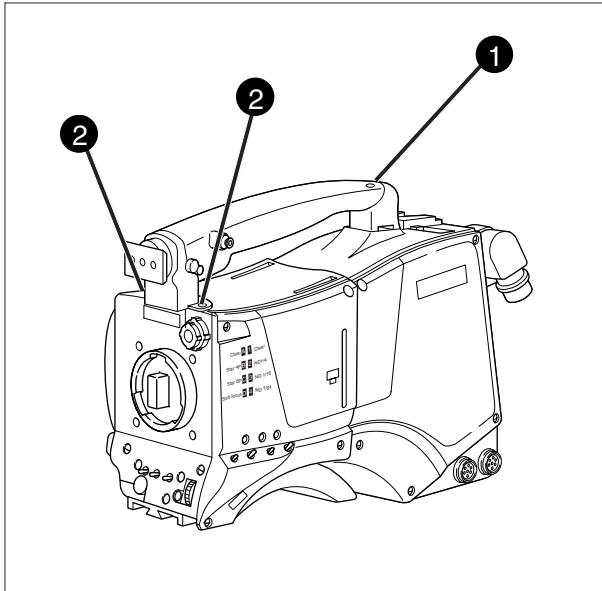
- Pull up the top print ejector ④ and pull down the bottom print ejector ⑤ to release the printed circuit board from its connector.
- Pull horizontally on these ejectors to slide the board clear of the camera.



Handgrip

To remove the handgrip proceed as follows:

- a. Remove the 1.5 inch viewfinder from its support bracket on the handgrip.
- b. Loosen the screw ❶ securing the handgrip to the top of the adapter.
- c. Loosen the two socket head screws ❷ securing the handgrip to the front of the camera.



Front unit

To remove the front unit the following steps have to be carried out:

- Remove the handgrip
- Detach the adapter
- Remove the camera left side cover
- Remove the camera right side cover
- Remove DVP board
- Remove the front unit

Removing the handgrip

To detach the handgrip follow the instructions given on the previous page.

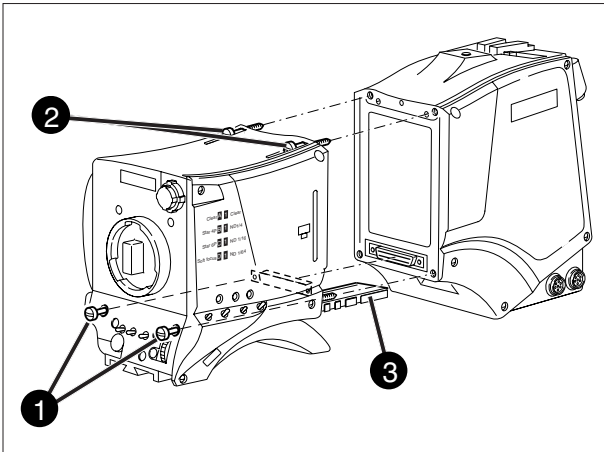
Detaching the adapter

To detach the adapter from the camera proceed as follows:

Caution

Follow these steps in the order given. Loosening the screws in the wrong order could result in mechanical damage to the camera.

- a. Loosen the two horizontal screws ❶ at the front of the camera.
- b. Loosen the two horizontal screws ❷ on the top of camera.
- c. Slide the adapter away from the camera along the rail ❸ at the bottom of the camera.



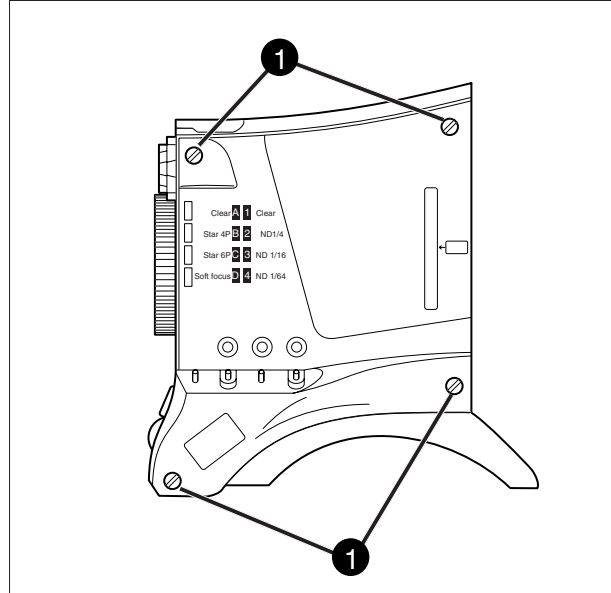
Caution

When reattaching the adapter be extremely careful with the connectors between the camera head and the adapter. Do not allow the guide pins to damage the pins of the connector.

Opening the left side cover

To open the left side cover proceed as follow:

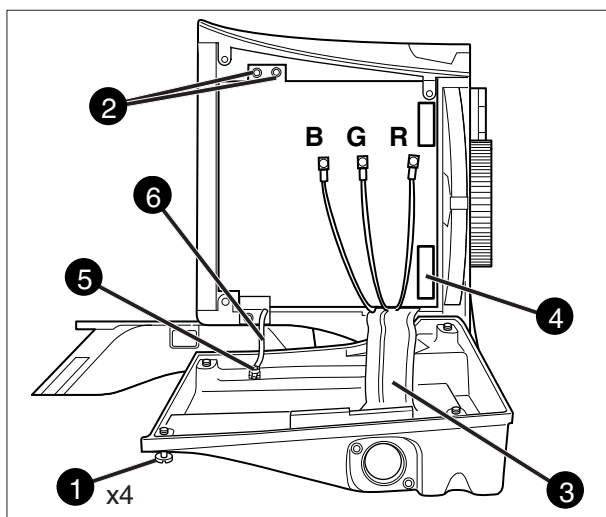
- a. Loosen the four screws ❶ at the front of the camera.
- b. Swing down the cover



Opening the right side cover

To remove the right front cover proceed as follows:

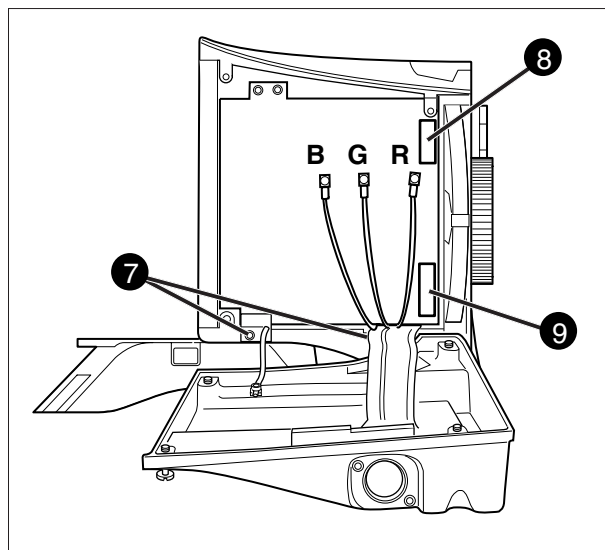
- Unscrew the four retaining screws ❶ and swing the right front cover down.
- Disconnect the B, R and G coax cables from the DVP board using the correct tool (part no. 5322 395 10802)
- Unscrew the two top retaining screws ❷ of the DVP board and swing the board downwards.
- Reach in behind the board and disconnect the flat cable from the connector at the bottom of the board.
- Disconnect the flat cable ❸ that comes from the cover, from the motherboard connector ❹.
- Loosen the screw ❺ and remove the retaining tie ❻ that restrains the cover.
- Remove the cover.



Removing the DVP board

To remove the DVP board proceed as follows:

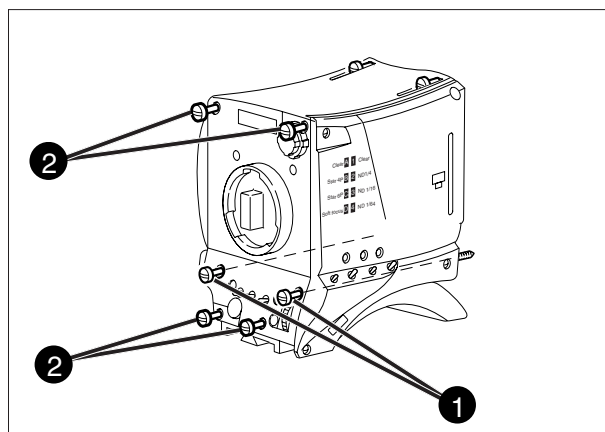
- Unscrew the two bottom retaining screws ❷ of the DVP board from the plastic clips and remove the board.
- Unscrew and disconnect the top connector ❸ from the DVP board.
- Unscrew the bottom connector ❹.



Removing the front unit

To remove the front unit proceed as follows:

- To ease the removal of the front unit remove the adapter screws ❶ completely.
- Unscrew the four retaining screws ❷ of the front unit.
- Move the front unit slightly upwards and forward and disconnect the flat cable that comes from the front from the connector on the connector board of the camera.
- Remove the front unit.



Section 4

Adjustments

This section contains the adjustment procedures to be followed to obtain the best performance from the camera. These procedures need only be used if, following a module replacement, the camera does not perform according to specifications.

Contents

Introduction	4-2	Sawtooth Calibration	4-4
Test Equipment	4-3	Flare Adjustment	4-5
Set-up Instructions	4-3	Software Download	4-5
Video ADC Automatic Calibration	4-4	3200K Adjustment	4-5
Pre-processor Calibration	4-4	Video Monitoring Adjustment	4-7

Introduction

This camera is factory tested and adjusted for operational use. Under normal circumstances, the internal automatic calibration procedures do not need to be started and the internal potentiometers do not need to be adjusted.

There are two situations that might require some realignment of the camera:

- a. When a lens is fitted.
- b. When a printed circuit board has been replaced.

When a lens is fitted the following alignment procedures should be carried out in the order given:

1. Run the internal 3200K calibration procedure.
2. Adjust the white shading via the menu system.
3. Adjust the flare.
4. Adjust the back focus (see lens manual for this adjustment).

If a printed circuit board is replaced, refer to table 4-1 to see which adjustments must be carried out to realign the camera. For a particular board, carry out the procedures in the order given.

If it is discovered that the camera is misaligned, the following procedures are given as a guide for competent service personnel, who have a thorough knowledge of the camera and have the use of calibrated equipment, to realign the camera.

If no improvement can be achieved or an adjustment is out of range, please contact your local supplier or the nearest Thomson Multimedia Broadcast Solutions Service Centre.

The camera head adjustment procedures are designed as separate units. Within a numbered procedure do not change the position of switches or jumpers unless instructed to do so in the procedure.

These adjustment procedures are for the Camera Head. However, for practical purposes the Triax Adapter is used together with the camera head to facilitate some measurements. Other adapters can be used for these measurements.

Table 4-1 Adjustment procedures on board replacement

Printed Circuit Board	Adjustment Procedure
Digital video board	1. Video ADC automatic calibration (internal) 2. Sawtooth calibration (internal)
Pre-processor board	1. Pre-processor calibration (internal)
Lens plate assemble	1. 3200K adjustment 2. White shading adjustment 3. Flare adjustment
Data Board	1. Software download
Sync. / monitoring board	1. Video monitoring adjustment

The following is a list of equipment required to carry out the adjustment procedure:

- Set of board extenders LDK 5820/01
- Oscilloscope (with cursor measurement)
- Spotlight 3200K
- Focus test chart
- Black hole test chart
- White PortaPattern test chart
- White 3200K test chart
- Waveform monitor

Before carrying out any adjustments the following steps are recommended:

- Attach an adapter to the camera.
- Install the camera on a tripod.
- Attach the lens and the necessary cables.
- Allow the camera to warm-up.

CAUTION:

Do not attempt to improve camera performance by adjusting individual potentiometers, jumpers or switches as this may lead to complete misalignment of the camera.

CAUTION:

Do not realign individual potentiometers, jumpers or switches not mentioned in this chapter or earlier in this manual. These adjustment points are for factory use only.

CAUTION:

Switch off the power supply to the camera before removing or replacing printed circuit boards.

Video ADC Automatic Calibration

The following is an automatic internal calibration procedure to adjust the analogue-digital convertors.
(There are not pre-conditions for this calibration.)

- a. In the menu system select the Service menu.
- b. Select Calibrations.
- c. Select Video ADC and run the procedure.

Sawtooth Calibration

The following is an automatic internal calibration procedure to adjust the internal gain of the DVP board.
(There are not pre-conditions for this calibration.)

- a. In the menu system select the Service menu.
- b. Select Calibrations.
- c. Select Sawtooth and run the procedure.

Pre-processor Calibration

The following is an automatic internal calibration procedure to adjust the analogue-digital convertors.
(There are not pre-conditions for this calibration.)

- a. In the menu system select the Service menu.
- b. Select Calibrations.
- c. Select PreProc and run the procedure.

3200K Adjustment

The following is an automatic internal calibration procedure to set the 3200K colour temperature.

- a. Recall the standard factory file.
- b. Shoot the white test chart illuminated with a 3200k spotlight (nominal video).
- c. In the menu system select the Service menu.
- d. Select Calibrations.
- e. Select 3200K and run the procedure.

Flare Adjustment

The following is an adjustment procedure to correct the flare introduced by the lens.

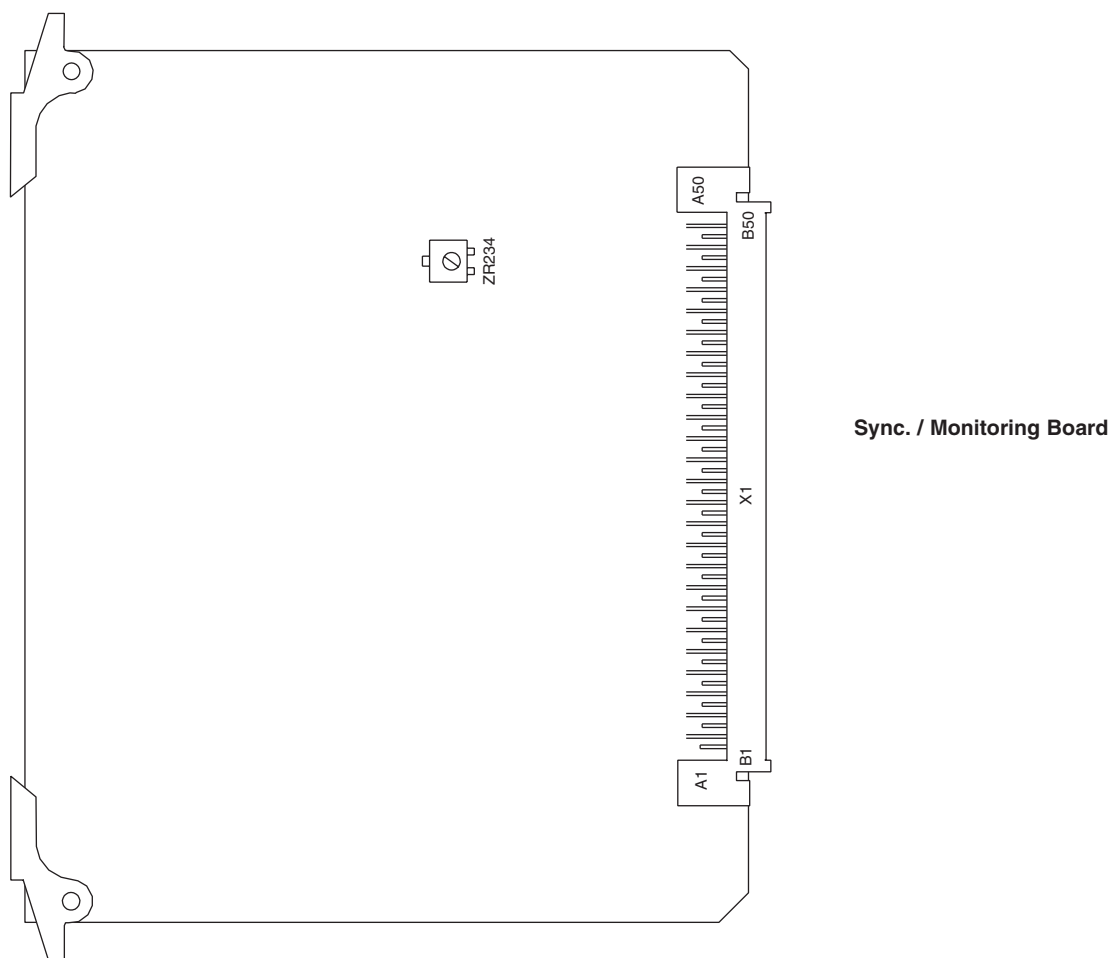
- a. Recall the standard factory file.
- b. Close the lens and set the black level to approximately 10mV.
- c. With the menu system select the green signal.
- d. Shoot the black hole test chart (100% video).
- e. In the menu system select the Video menu.
- f. Select Flare.
- g. View the waveform monitor and adjust the green flare so that there is no difference in the black level.
- h. Repeat this adjustment for blue and red.

Software Download

The following procedure should be carried out to update the software.

- a. Connect the PC to the RS232 connector of the camera.
- b. Follow the instruction on the PC to download the software.

Video Monitoring Adjustment



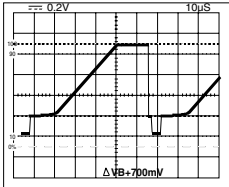
Video Monitoring Adjustment

Set-up

1. Switch off power. Place sync. monitoring board on service extender. Switch on power.
2. Switch on colour bar.

Viewfinder output level

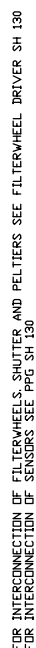
3. Connect oscilloscope to X1-B45.
4. Adjust the potentiometer on the sync. monitoring board to obtain the correct output amplitude VF output signal.

Measure at:	Adjust with:	Required result:	Correct:
X1-B45	ZR234	700mV	

5. Switch off power. Return sync. monitoring board to its position in the camera.

Section 5

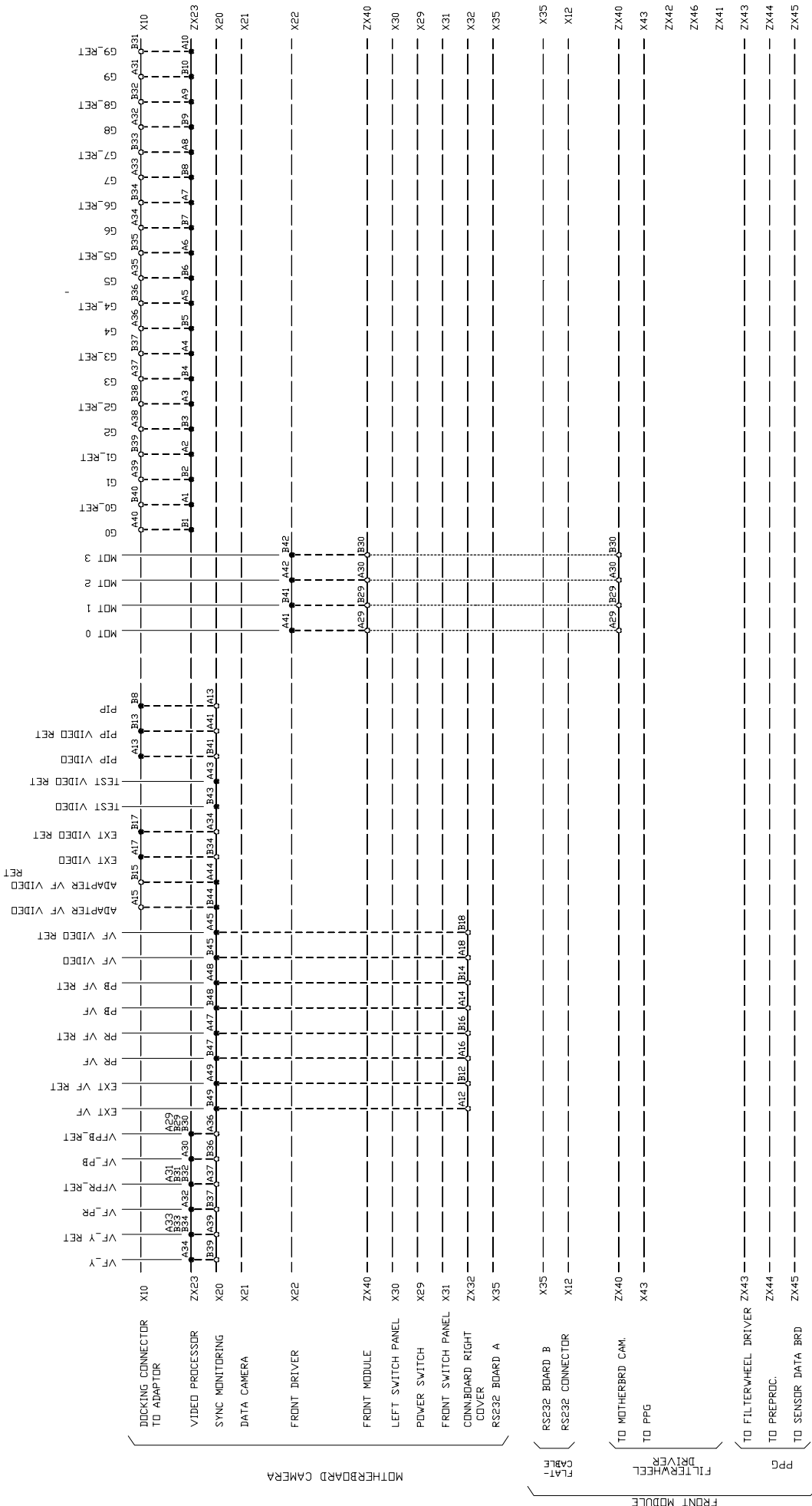
Wiring Diagrams



COMPONENTS {
ON PCB,
TRACK : ---
WIRE : ____
CONNECTOR:

COMMON DOCUMENTS: 3922 407 32420

STATUS	X	1	2	3	4	5	6	7	8	9
	10	11	12	13	14	15	16	17	18	19
ASSEMBLY No. : 89526 600 00001 HDTV DOCKABLE CAMERA HEAD										
P.C.B. No. :										
WIRING DIAGRAM										
NAME A. MOELANDS										
CURR. DATE : 00-06-21 DES. DATE : 00-05-08 DRG. DATE : 99-12-14										
PROPERTY OF :										
B7S BROADCAST TELEVISION SYSTEMS BV BREDA THE NETHERLANDS										
5 SH. SHEET 131 - 1										

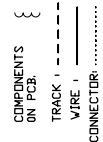


COMMON DOCUMENTS: 3922 407 32420

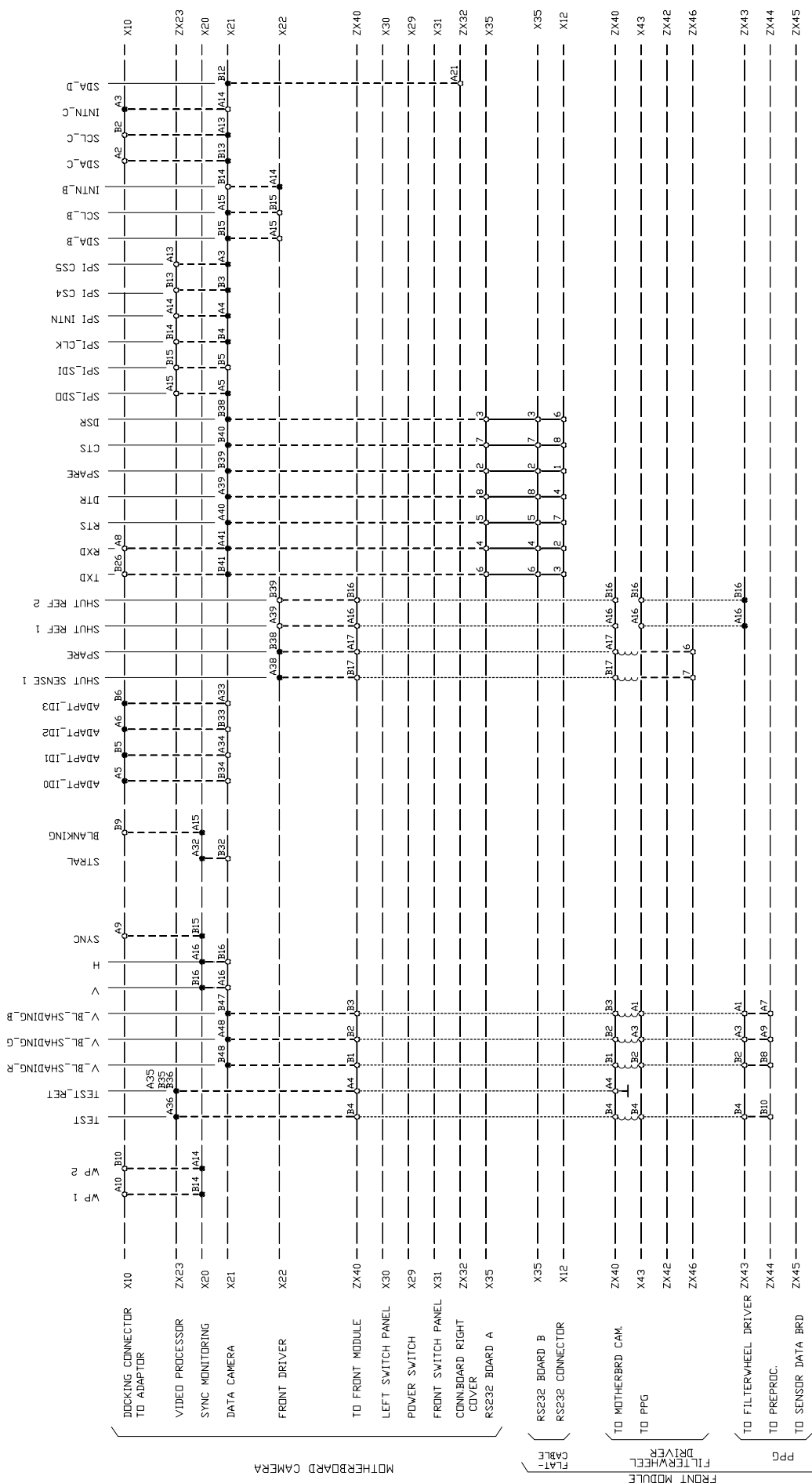
STATUS	X	1	2	3	4	5	6	7	8	9
ASSEMBLY No. 1	10	11	12	13	14	15	16	17	18	19
PROPERTY No. 1	20	21	22	23	24	25	26	27	28	29
PROPERTY No. 2	30	31	32	33	34	35	36	37	38	39
PROPERTY No. 3	40	41	42	43	44	45	46	47	48	49
PROPERTY No. 4	50	51	52	53	54	55	56	57	58	59
PROPERTY No. 5	60	61	62	63	64	65	66	67	68	69
PROPERTY No. 6	70	71	72	73	74	75	76	77	78	79
PROPERTY No. 7	80	81	82	83	84	85	86	87	88	89
PROPERTY No. 8	90	91	92	93	94	95	96	97	98	99
PROPERTY No. 9	100	101	102	103	104	105	106	107	108	109
PROPERTY No. 10	110	111	112	113	114	115	116	117	118	119
PROPERTY No. 11	120	121	122	123	124	125	126	127	128	129
PROPERTY No. 12	130	131	132	133	134	135	136	137	138	139
PROPERTY No. 13	140	141	142	143	144	145	146	147	148	149
PROPERTY No. 14	150	151	152	153	154	155	156	157	158	159
PROPERTY No. 15	160	161	162	163	164	165	166	167	168	169
PROPERTY No. 16	170	171	172	173	174	175	176	177	178	179
PROPERTY No. 17	180	181	182	183	184	185	186	187	188	189
PROPERTY No. 18	190	191	192	193	194	195	196	197	198	199
PROPERTY No. 19	200	201	202	203	204	205	206	207	208	209
PROPERTY No. 20	210	211	212	213	214	215	216	217	218	219
PROPERTY No. 21	220	221	222	223	224	225	226	227	228	229
PROPERTY No. 22	230	231	232	233	234	235	236	237	238	239
PROPERTY No. 23	240	241	242	243	244	245	246	247	248	249
PROPERTY No. 24	250	251	252	253	254	255	256	257	258	259
PROPERTY No. 25	260	261	262	263	264	265	266	267	268	269
PROPERTY No. 26	270	271	272	273	274	275	276	277	278	279
PROPERTY No. 27	280	281	282	283	284	285	286	287	288	289
PROPERTY No. 28	290	291	292	293	294	295	296	297	298	299
PROPERTY No. 29	300	301	302	303	304	305	306	307	308	309
PROPERTY No. 30	310	311	312	313	314	315	316	317	318	319
PROPERTY No. 31	320	321	322	323	324	325	326	327	328	329
PROPERTY No. 32	330	331	332	333	334	335	336	337	338	339
PROPERTY No. 33	340	341	342	343	344	345	346	347	348	349
PROPERTY No. 34	350	351	352	353	354	355	356	357	358	359
PROPERTY No. 35	360	361	362	363	364	365	366	367	368	369
PROPERTY No. 36	370	371	372	373	374	375	376	377	378	379
PROPERTY No. 37	380	381	382	383	384	385	386	387	388	389
PROPERTY No. 38	390	391	392	393	394	395	396	397	398	399
PROPERTY No. 39	400	401	402	403	404	405	406	407	408	409
PROPERTY No. 40	410	411	412	413	414	415	416	417	418	419
PROPERTY No. 41	420	421	422	423	424	425	426	427	428	429
PROPERTY No. 42	430	431	432	433	434	435	436	437	438	439
PROPERTY No. 43	440	441	442	443	444	445	446	447	448	449
PROPERTY No. 44	450	451	452	453	454	455	456	457	458	459
PROPERTY No. 45	460	461	462	463	464	465	466	467	468	469
PROPERTY No. 46	470	471	472	473	474	475	476	477	478	479
PROPERTY No. 47	480	481	482	483	484	485	486	487	488	489
PROPERTY No. 48	490	491	492	493	494	495	496	497	498	499
PROPERTY No. 49	500	501	502	503	504	505	506	507	508	509
PROPERTY No. 50	510	511	512	513	514	515	516	517	518	519
PROPERTY No. 51	520	521	522	523	524	525	526	527	528	529
PROPERTY No. 52	530	531	532	533	534	535	536	537	538	539
PROPERTY No. 53	540	541	542	543	544	545	546	547	548	549
PROPERTY No. 54	550	551	552	553	554	555	556	557	558	559
PROPERTY No. 55	560	561	562	563	564	565	566	567	568	569
PROPERTY No. 56	570	571	572	573	574	575	576	577	578	579
PROPERTY No. 57	580	581	582	583	584	585	586	587	588	589
PROPERTY No. 58	590	591	592	593	594	595	596	597	598	599
PROPERTY No. 59	600	601	602	603	604	605	606	607	608	609
PROPERTY No. 60	610	611	612	613	614	615	616	617	618	619
PROPERTY No. 61	620	621	622	623	624	625	626	627	628	629
PROPERTY No. 62	630	631	632	633	634	635	636	637	638	639
PROPERTY No. 63	640	641	642	643	644	645	646	647	648	649
PROPERTY No. 64	650	651	652	653	654	655	656	657	658	659
PROPERTY No. 65	660	661	662	663	664	665	666	667	668	669
PROPERTY No. 66	670	671	672	673	674	675	676	677	678	679
PROPERTY No. 67	680	681	682	683	684	685	686	687	688	689
PROPERTY No. 68	690	691	692	693	694	695	696	697	698	699
PROPERTY No. 69	700	701	702	703	704	705	706	707	708	709
PROPERTY No. 70	710	711	712	713	714	715	716	717	718	719
PROPERTY No. 71	720	721	722	723	724	725	726	727	728	729
PROPERTY No. 72	730	731	732	733	734	735	736	737	738	739
PROPERTY No. 73	740	741	742	743	744	745	746	747	748	749
PROPERTY No. 74	750	751	752	753	754	755	756	757	758	759
PROPERTY No. 75	760	761	762	763	764	765	766	767	768	769
PROPERTY No. 76	770	771	772	773	774	775	776	777	778	779
PROPERTY No. 77	780	781	782	783	784	785	786	787	788	789
PROPERTY No. 78	790	791	792	793	794	795	796	797	798	799
PROPERTY No. 79	800	801	802	803	804	805	806	807	808	809
PROPERTY No. 80	810	811	812	813	814	815	816	817	818	819
PROPERTY No. 81	820	821	822	823	824	825	826	827	828	829
PROPERTY No. 82	830	831	832	833	834	835	836	837	838	839
PROPERTY No. 83	840	841	842	843	844	845	846	847	848	849
PROPERTY No. 84	850	851	852	853	854	855	856	857	858	859
PROPERTY No. 85	860	861	862	863	864	865	866	867	868	869
PROPERTY No. 86	870	871	872	873	874	875	876	877	878	879
PROPERTY No. 87	880	881	882	883	884	885	886	887	888	889
PROPERTY No. 88	890	891	892	893	894	895	896	897	898	899
PROPERTY No. 89	900	901	902	903	904	905	906	907	908	909
PROPERTY No. 90	910	911	912	913	914	915	916	917	918	919
PROPERTY No. 91	920	921	922	923	924	925	926	927	928	929
PROPERTY No. 92	930	931	932	933	934	935	936	937	938	939
PROPERTY No. 93	940	941	942	943	944	945	946	947	948	949
PROPERTY No. 94	950	951	952	953	954	955	956	957	958	959
PROPERTY No. 95	960	961	962	963	964	965	966	967	968	969
PROPERTY No. 96	970	971	972	973	974	975	976	977	978	979
PROPERTY No. 97	980	981	982	983	984	985	986	987	988	989
PROPERTY No. 98	990	991	992	993	994	995	996	997	998	999
PROPERTY No. 99	1000	1001	1002	1003	1004	1005	1006	1007	1008	1009
PROPERTY No. 100	1010	1011	1012	1013	1014	1015	1016	1017	1018	1019

ASSEMBLY No. 1 8936 600 0001									
HDTV CAMERA HEAD									
P.C.B. No. 1									
WIRING									
DIAGRAM									
NAME/A. IRELANDS									
PROPERTY OF:									
BTS BROADCAST TELEVISION SYSTEMS BV									
BREDBA THE NETHERLANDS									

TRACK : - - - - -
WIRE : - - - - -
CONNECTOR :



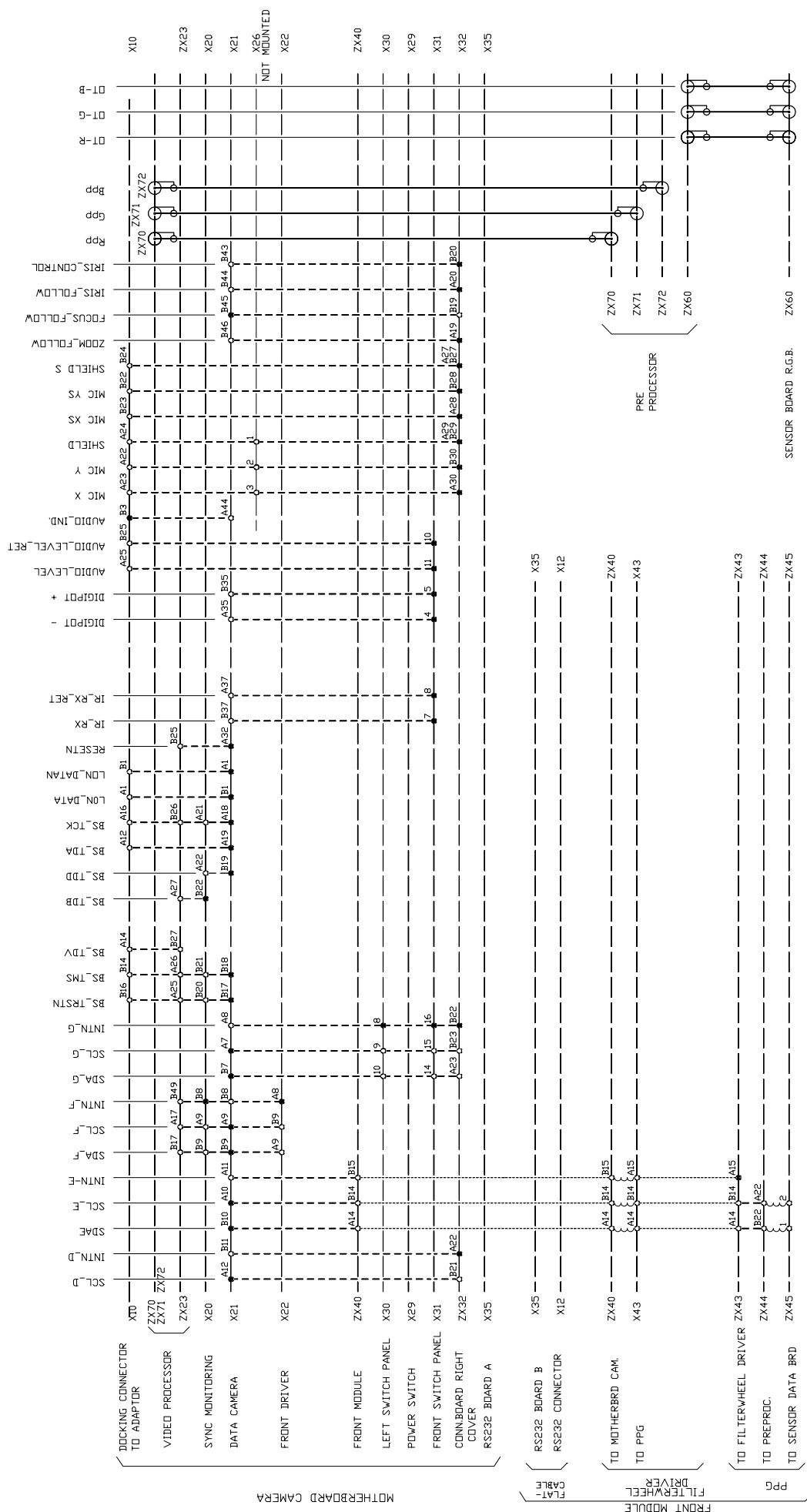
COMMON DOCUMENTS: 3922 407 32420												
STATUS	X	1	2	3	4	5	6	7	8	9		
ASSEMBLY	10	11	12	13	14	15	16	17	18	19		
NO. 8986 600 000.												
DO NOT WRITE - COVER HEAD												
P.C.B.	NO. 1					DATE DATE 00-06-21						
WIRING DIAGRAM												
PREV. DATE 00-05-08												
NAME-A. MELANDS												
5 SH. SHEET 131 - 3												
PROPERTY OF:												
BTS BROADCAST TELEVISION SYSTEMS BV												
BRED A THE NETHERLANDS												



COMMON DOCUMENTS: 3922 407 32420

X 1 2 3 4 5 6 7 8 9										STATUS										10 11 12 13 14 15 16 17 18 19										ASSEMBLY No. 8926 600 0001										HTV DUCKABLE CAMERA HEAD																																																	
P.C.B. No 1										WIRING DIAGRAM										CURS DATE: 00-06-21										PREV. DATE: 00-05-08										NAME A. MELANDIS										ENG. DATE: 99-12-14										5 SHEET 131 - 4										PROPERTY OF, B.TS BROADCAST TELEVISION SYSTEMS BV										ROTTERDAM TELEVISION AUDIO.									

COMPONENTS {
ON PCB.
TRACK : - - - -
WIRE : _____
CONNECTOR:



COMMON DOCUMENTS: 3922 407 32420

STATUS	X	1	2	3	4	5	6	7	8	9
ASSEMBLY No.	10	11	12	13	14	15	16	17	18	19
ASSEMBLY No. 8926 600 0001										
HDTV DOCAWLY CAMERA HEAD										
P.C.B. No.										
VIRING DIAGRAM										
NAME/A. MIELANDS										
PROPERTY OF										
BTS BROADCAST TELEVISION SYSTEMS BV										
BREDA, THE NETHERLANDS										

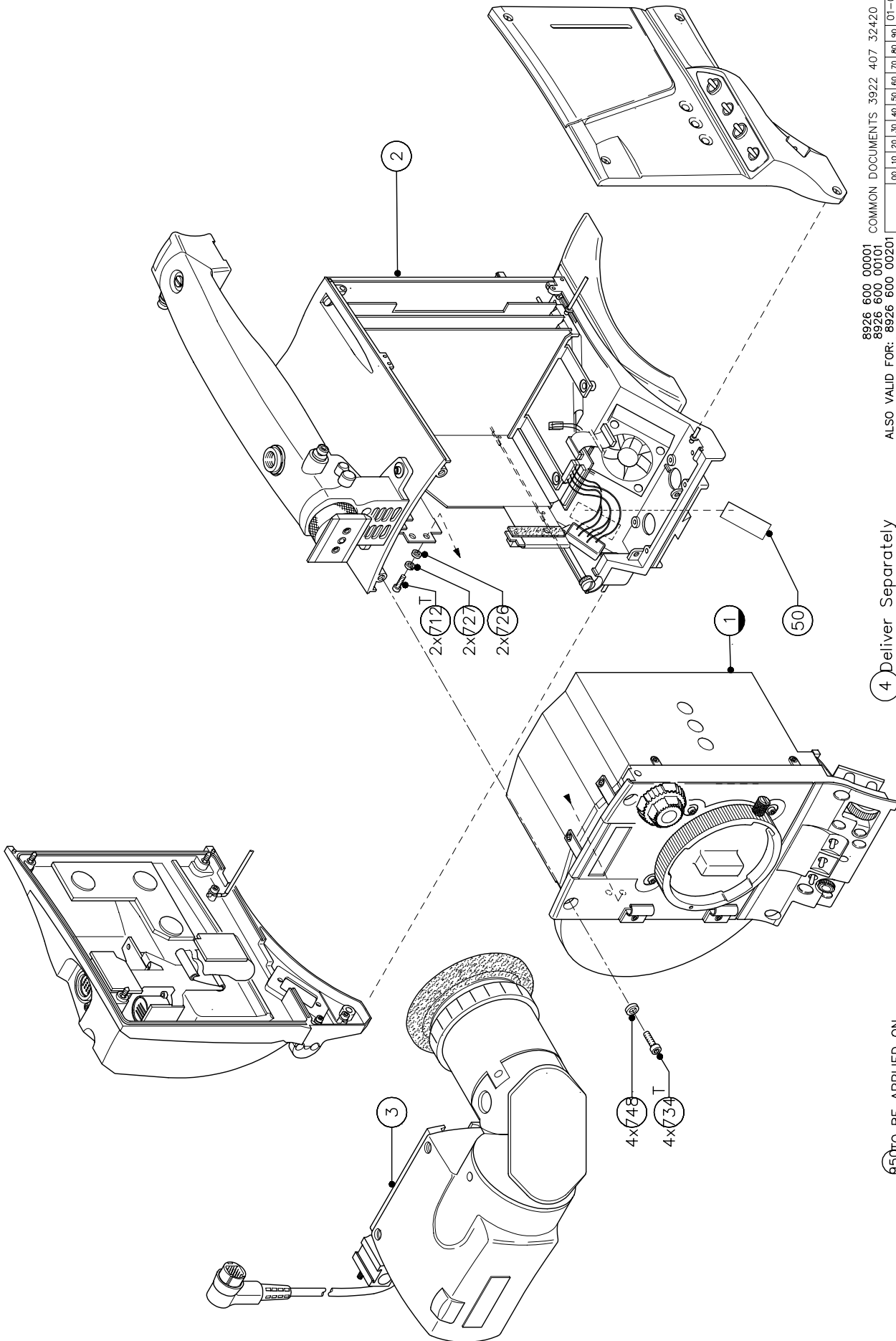
COMPONENTS ON PCB. {
 TRACK : - - - - -
 WIRE : - - - - -
 CONNECTOR :

Section 6

Mechanical Exploded Views

Contents

HD Camera head	6-2	Cover right assy	6-5
Camera head basic	6-3	Shoulderpad assy	6-6
Cover left assy	6-4	Handgrip assy	6-7



8926 600 00001
8926 600 00101
ALSO VALID FOR:
8926 600 00201
8926 600 05001
8926 600 05101
8926 600 05201

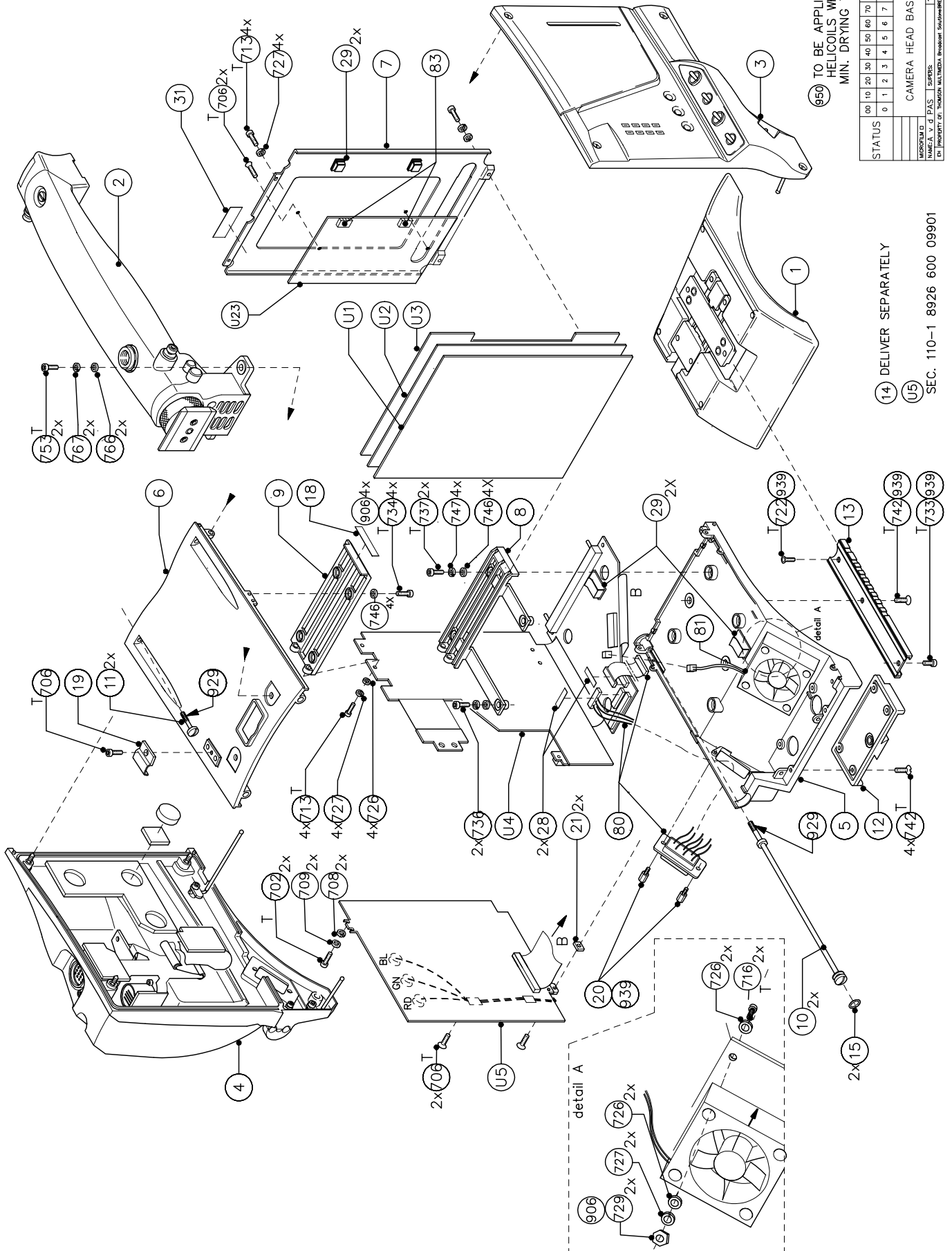
4 Deliver Separately

Option

50 TO BE APPLIED ON
HELICOILS WHEN NECESSARY
MIN. DRYING TIME: 30 MINUTES

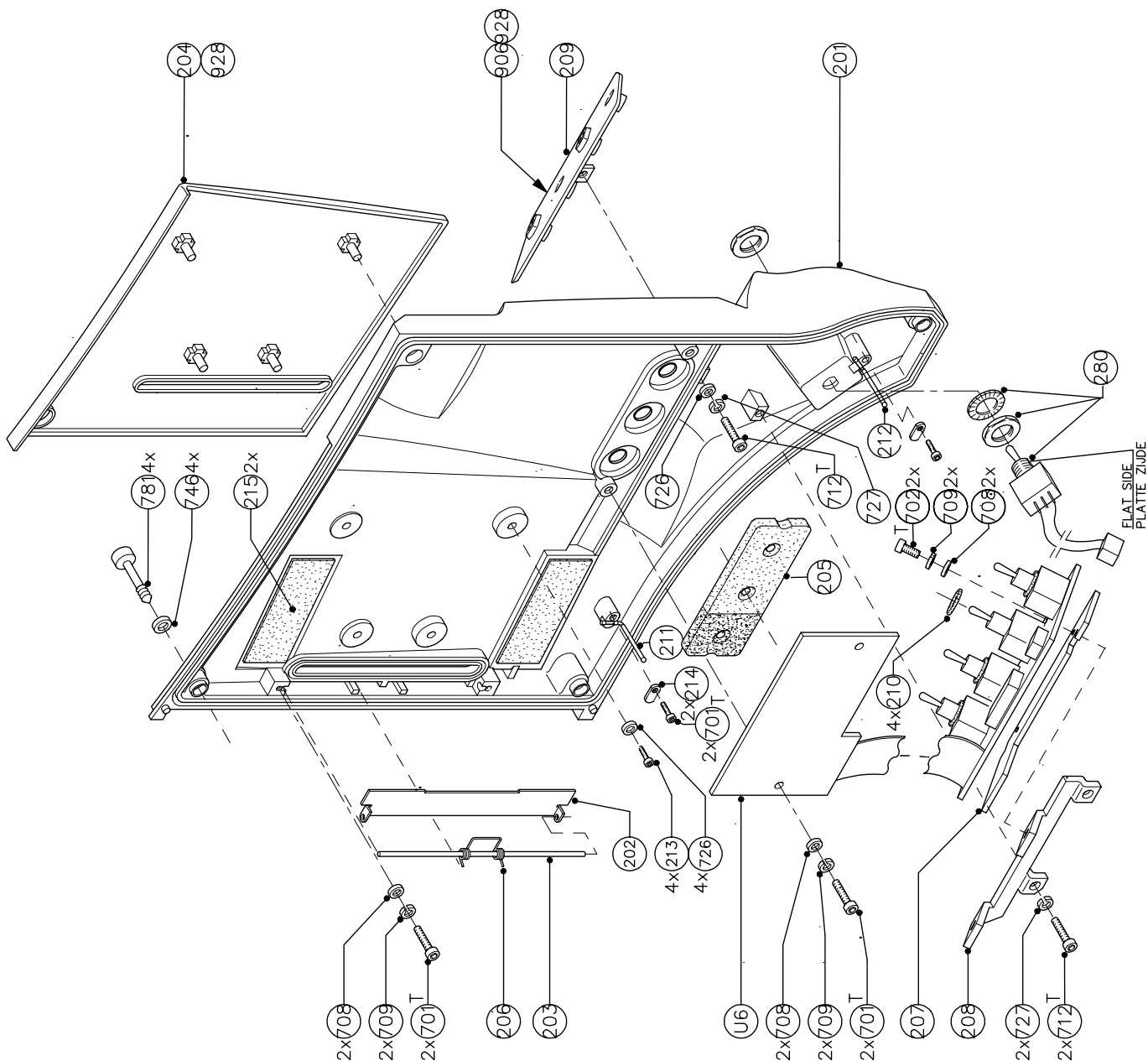
COMMON DOCUMENTS 3922 407 32420

00	10	20	30	40	50	60	70	80	90	01-02-20
0	1	2	3	4	5	6	7	8	9	02-04-04
HD.CAM.HEAD LDK 6000										8926 600 09901
PROPERTY OF: THOMSON MULTIMEDIA Broadcast solutions BRUX - THE NETHERLANDS										DATE: 29-05-00 A3



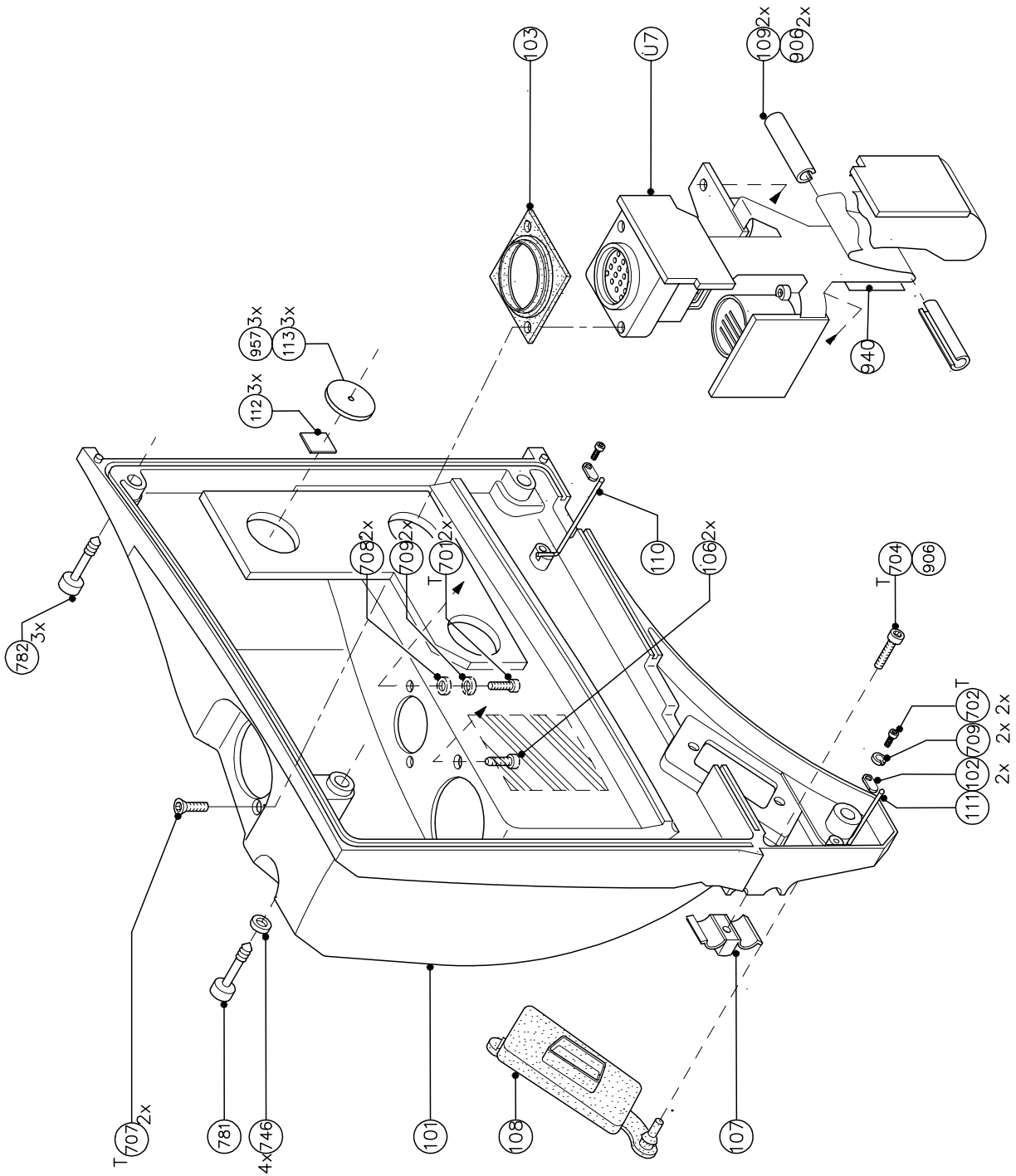
TO BE APPLIED ON
HELICOILS WHEN NECESSARY
MIN. DRYING TIME: 30 MINUTES

STATUS	00	10	20	30	40	50	60	70	80	90	01-03-18	02-02-18
	0	1	2	3	4	5	6	7	8	9	01-08-16	01-08-16
	0	1	2	3	4	5	6	7	8	9	01-11-17	01-11-17
CAMERA HEAD BASIC												
3922 407 32430												
MICROFILM D												
NAME, V & P AS SUPPLERS												
1 SHISH 110-1												
BY PROPERTY OF THOMSON MULTIMEDIA Broadcast Solutions - THE NETHERLANDS												
DATE: 00-11-21 A3												

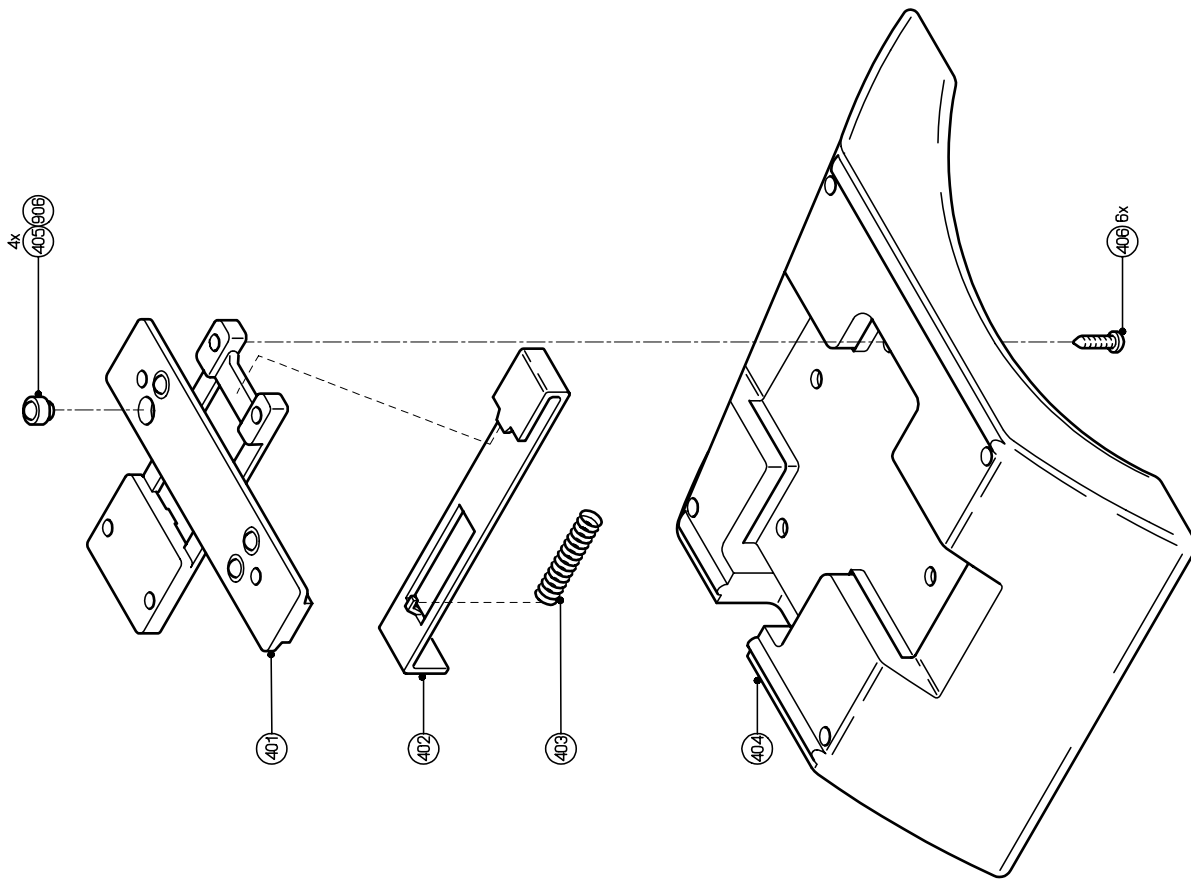


ALSO VALID FOR: 3922 407 31350

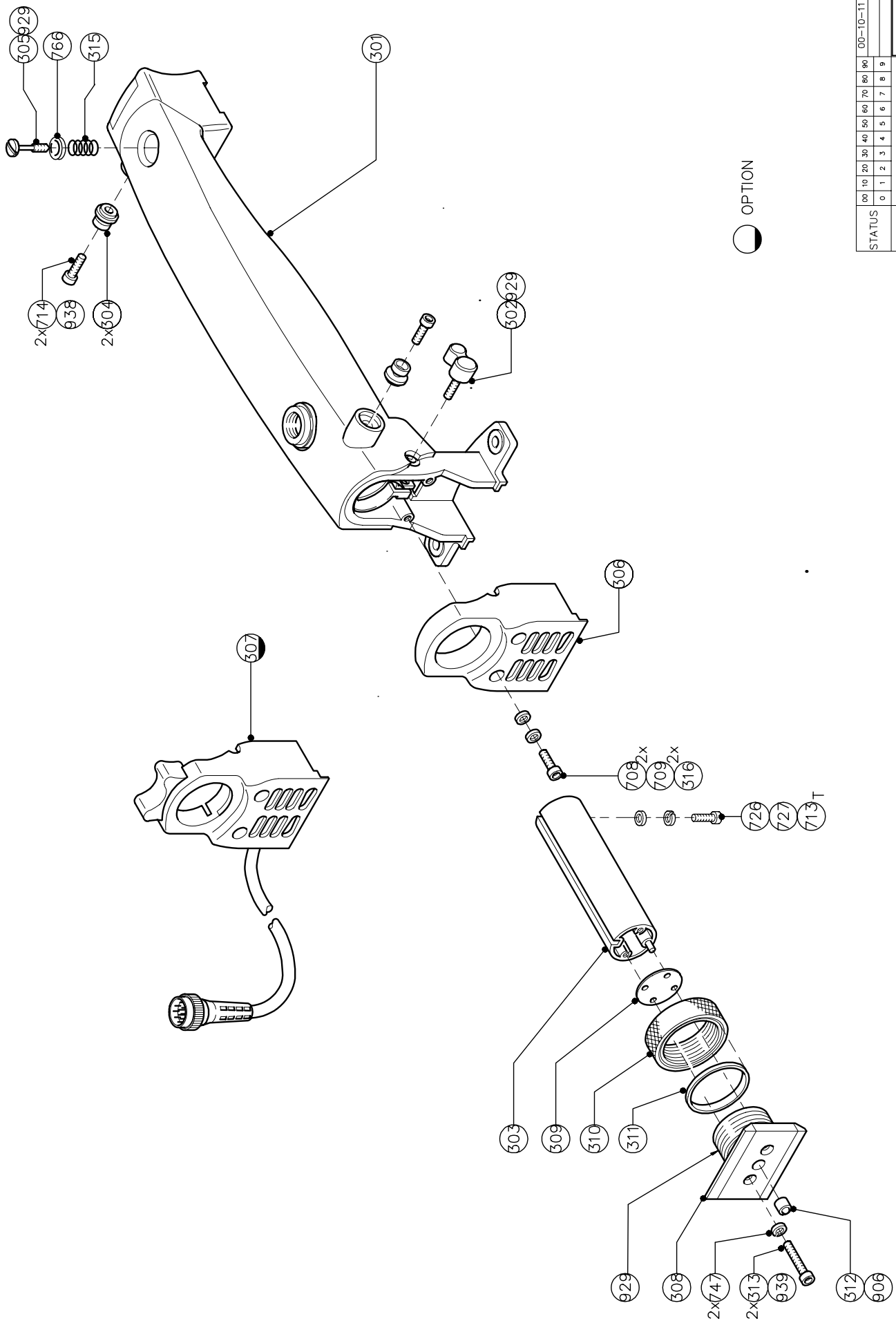
00	10	20	30	40	50	60	70	80	90	97-08	2088-07-20
01	11	21	31	41	51	61	71	81	91	97-11	20100-01-11
02	12	22	32	42	52	62	72	82	92	97-11	25100-04-26
COVER LEFT ASSY											3922 407 24320
MICROFILM D											
NAME: V. VITET											
SUPPERS											
TO PROPERTY OF PHILIPS BROADCAST TELEVISION SYSTEMS											
DATE: 97-05-16											A3



STATUS	00	10	20	30	40	50	60	70	80	90	00-12-13
	0	1	2	3	4	5	6	7	8	9	01-12-03
REVISION											
NAME	COVER RIGHT ASSY										
DATE	3922 407 33660										
BY	PROPERTY OF: THOMSON Multimedia Product Solutions B.V. - THE NETHERLANDS										
DATE	00-11-22										
A3											



STATUS	00	10	20	30	40	50	60	70	80	90	98-01-21	
	0	1	2	3	4	5	6	7	8	9		
SHOULDERPAD ASSY												
3922 407 22220												
SHOULDERPAD												
MOEFLMD												
NAME P. DE GEBELUW. SURFERS												
BY PROPERTY OF THE PRODUCT TELEVISION SYSTEMS BY - BREA - THE NETHERLANDS												
										13434-110-1	DATE	96-11-13
A3												



STATUS	00	10	20	30	40	50	60	70	80	90	00-10-11
	0	1	2	3	4	5	6	7	8	9	
REVISION	HAND GRIP ASSY										
NAME: A. J. P.J.S.	1 Sep 110-1										
ON PROPERTY OF PHILIPS DIGITAL VIDEO SYSTEM BV	- IMEDA - THE NETHERLANDS										
3922 407 33620	A3										

