



Remote Control of Miranda's NVISION Routers

Introduction

You can control Miranda's NVISION routing systems from a remote location by using Miranda's router control GUI panel application operating on a Windows® PC. Remote control assists in (1) disaster recovery and (2) control of automated locations. It also provides other general benefits.



Figure 1. EC9700 Control GUI

Two licenses for the GUI control panel are standard with every NV9000 system. The GUI can be configured as an X/Y control panel, single-destination control panel, a multiple-destination control panel, and can combine these modes. Because the GUI configuration resides within the NV9000 server, any changes made to the router configuration are automatically reflected on the GUI without any reconfiguration on a remote PC operating the GUI.

Any GUI configuration might connect just a few sources to a single destination or it might control the entire router system. You might want to limit the number of router connections that some operators can control, while providing complete control of the router for more qualified operators. With remote control, you can spread differently configured GUIs around your facility (or around the world.)

The NV9000 server has a "house network" port that you can connect to your common building network. Any PC on this network may control the system's routers using the EC9700 GUI.

Remote Control of Miranda's NVISION Routers

If you extend your network either physically or virtually, using VPN, you can control the router from any location.

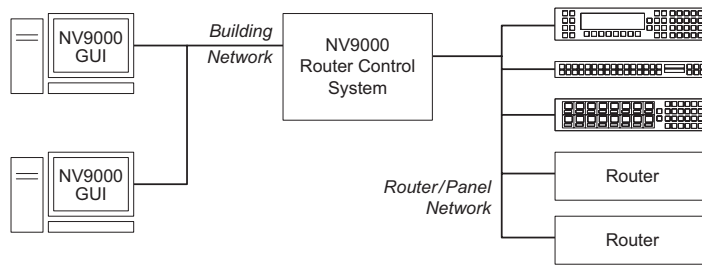


Figure 2. Router System

To help operators control more than one NV9000 (e.g., NV9000 systems in different cities) we offer a simple GUI panel switch application. This is configured with each remote NV9000's IP address to allow a GUI to make a connection with any of the NV9000 systems. Using a GUI panel the operator can easily switch between different NV9000 systems, either within a building or throughout the world.

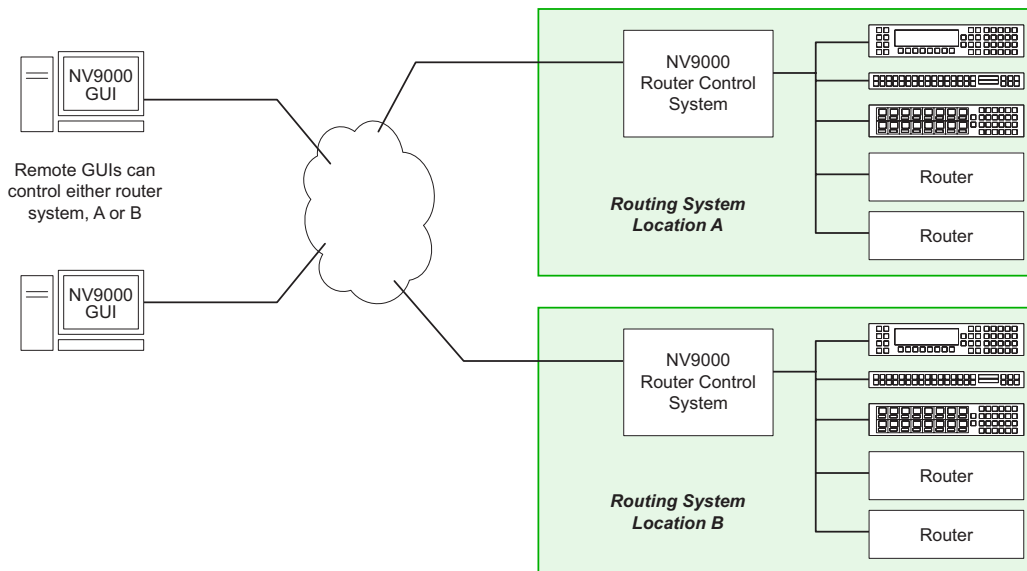


Figure 3. Router System

Again, the GUI's configuration resides within each of the NV9000 servers. The GUI obtains the current configuration when it connects to a server. Configuration changes are performed at the NV9000 without requiring any reconfiguration of the remote GUI.

Virtual Panels

Miranda has recently introduced a new set of virtual panels: these software panels emulate our most popular hardware panels. Now anyone can have a router control panel—operating on their computer.

The virtual panels (VPs) can also operate over your house network (LAN or WAN). You can easily reconnect a VP to a different NV9000 routing system. These new panels are platform-independent: they operate on Windows PCs, Macs, or Linux computers.



Figure 4. NV9605 Virtual Panel

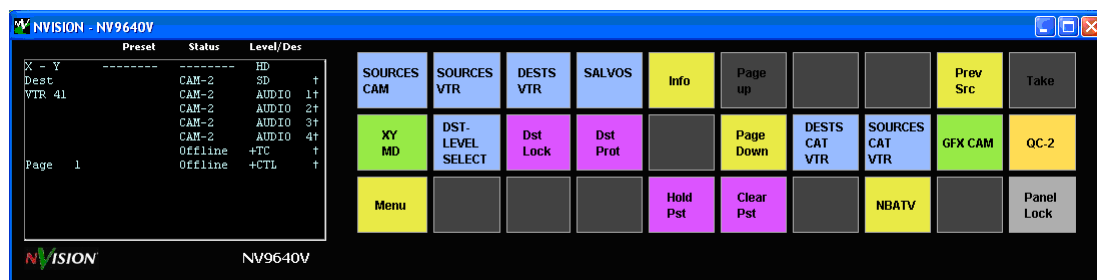


Figure 5. NV9640 Virtual Panel

Conclusion

Many installations require remote control of the routing system. Remote control is easily accomplished using Miranda's software control panels or virtual panels (GUIs) on remote PCs.

The NVISION series has many panel styles. Choose the panels that best fit your needs.