

## K-Frame V-series Hardware



V-series 3RU Frame (Door Open)



6C - 1

The V-series frame can also be populated with a VPE board, a controller board and an optional iDPM board.

The Controller has 2 dedicated MultiViewers and the Image Store.

---

---

---

---

---

---

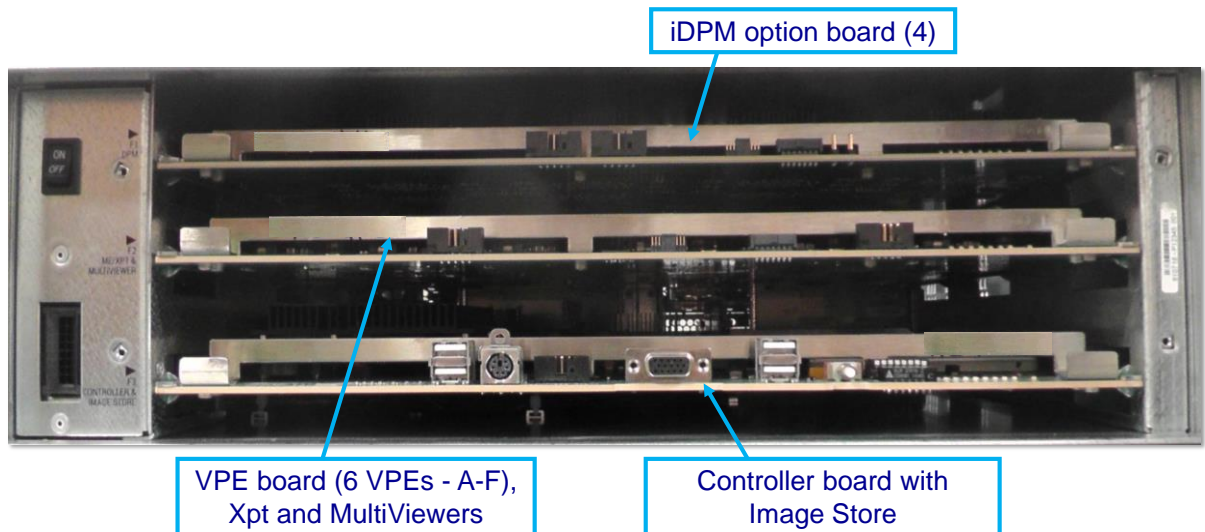
---

---

---

---

## Board layout – V-series Frame



6C - 2

The V series frame can be populated with a VPE board, a controller board and an optional iDPM board.

The Controller has 2 dedicated MultiViewers and the Image Store.

-

-

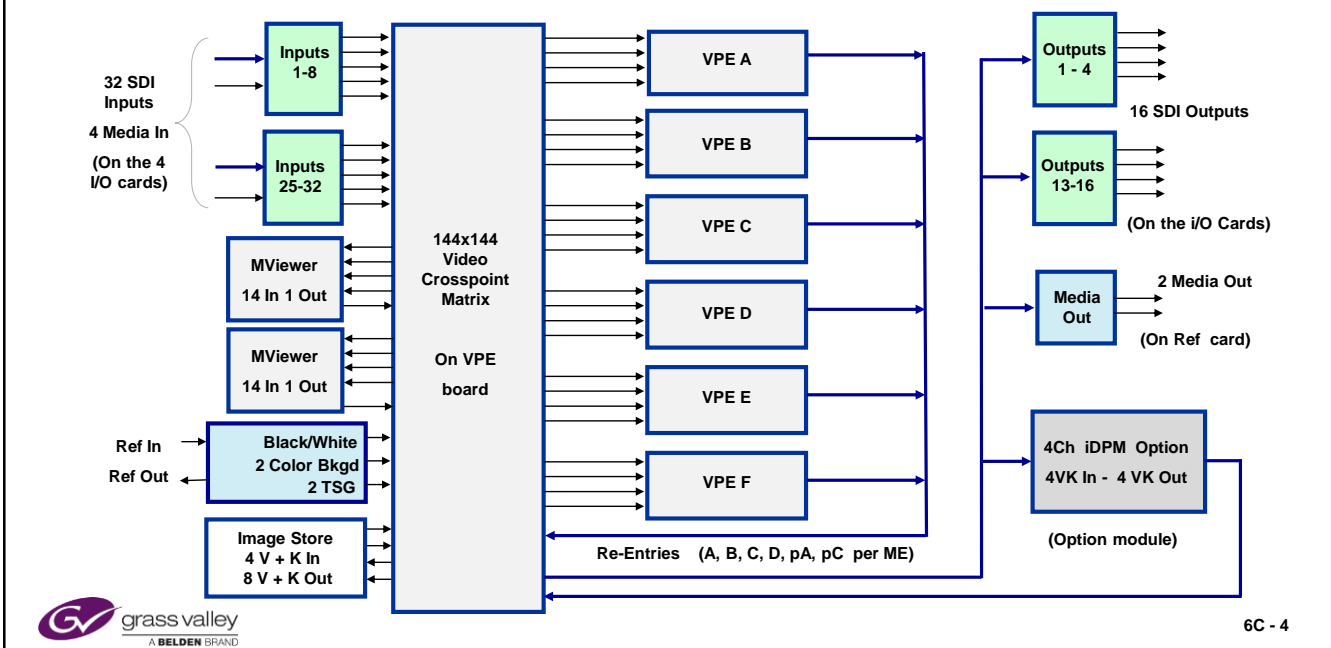
## Karrera & Kayenne K-Frame V-series

- I/O cards 8 in 4 out per card
  - Convertors on all inputs/outputs – future option
- Image Store option with 4VK inputs and 8 VK Outputs
- 4 serial I/O ports
- 1 Media input port per I/O card (4 max)
- 2 Media Outputs on Ref I/O card (No safe title or Video Processor features )
- 2 Sync outputs
- 8 GPI In, 8 GPI Out, 24 Tally relays
- Ethernet Tally – option
- 18 Aux busses
- Has no 4K mode and has No ME View feature



6B - 3

## K-Frame V-series Video Flow - 6 VPE (3 RU)



The K-Frame V-series houses 3 boards from the front.

The reference Out is NOT a generator it is an output from the Reference input.

## V-series – Controller Board

Carries the Following components

SBC

Image Store and IS Memory

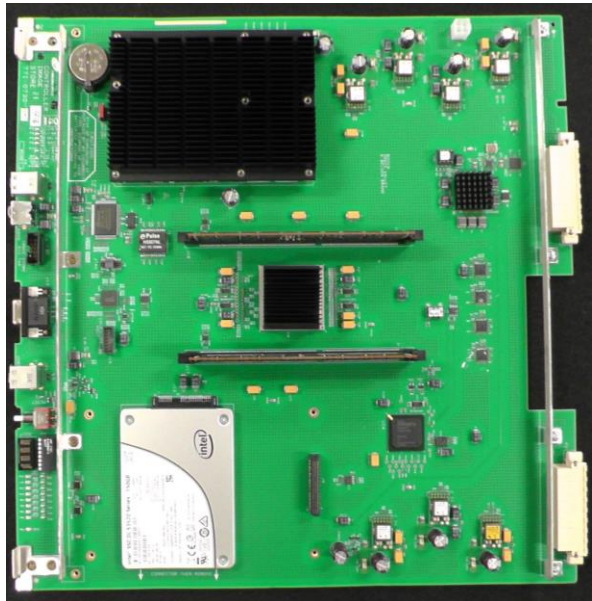
150GB SSD

Power regulators

Reset Switch

Boot Switch

Status display



6C - 5



The V-series frame can also be populated with a VPE board, a controller board and an optional iDPM board.

The Controller has 2 dedicated MultiViewers and the Image Store.

---

---

---

---

---

---

---

---

---

---

## V-series – VPE Board

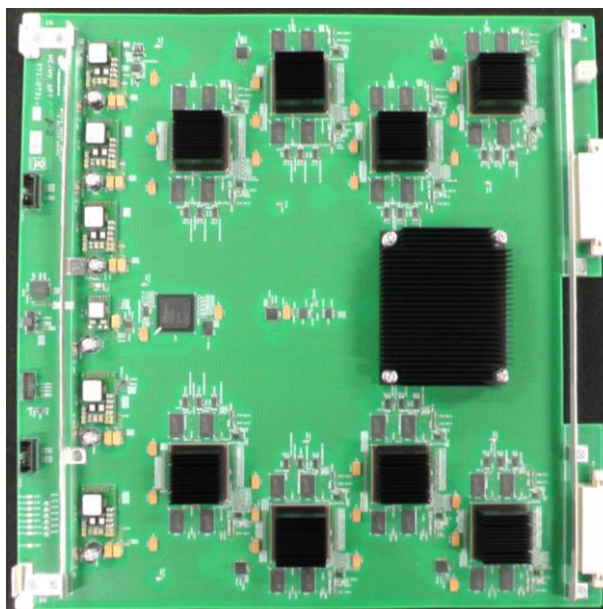
Carries the Following components

6 VPEs

2 MultiViewers

144 x 144 Xpt

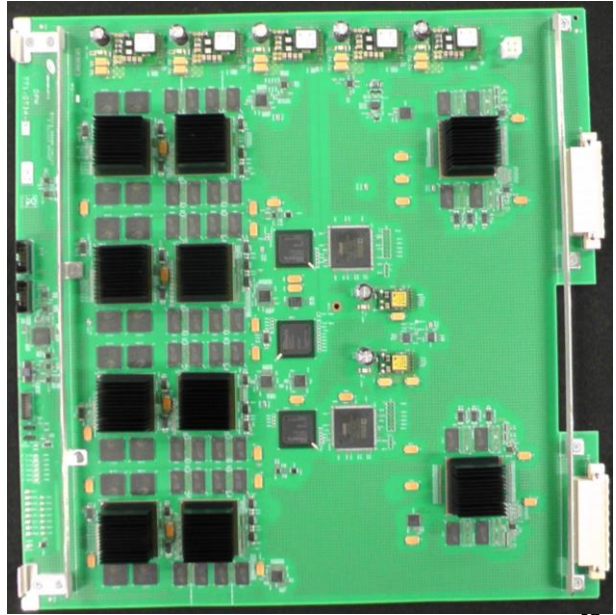
Power regulators



6C - 6

## V-series – iDPM Board

Carries the Following components  
4 iDPM channels  
Power regulators  
iDPM Routing hardware



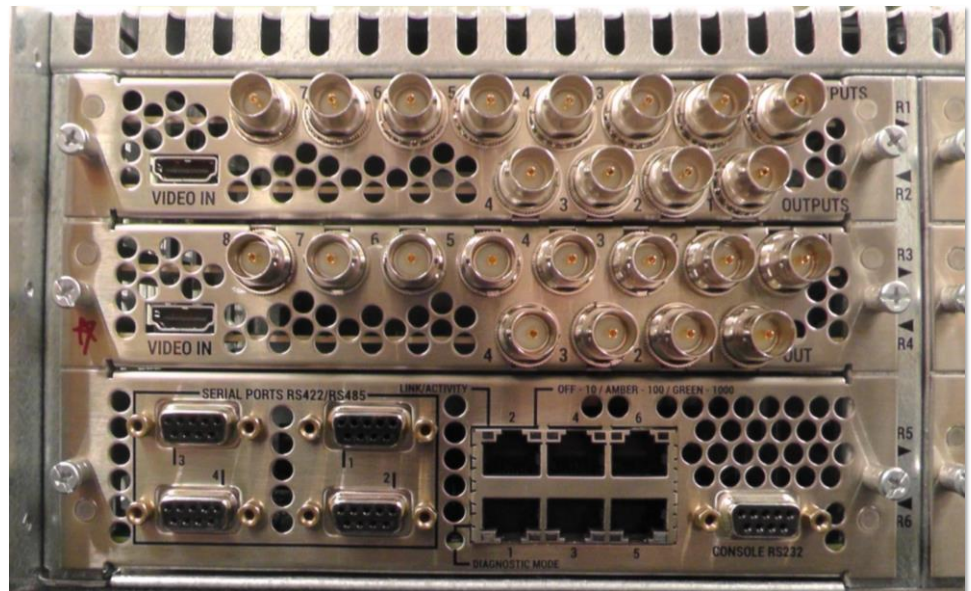
6C - 7



## V-series Frame – Rear - Left hand side

2 I/O Modules  
8 SDI IN  
4 SDI out  
1 Media in

Controller I/O  
Module  
4 Serial ports  
6 Ethernet ports  
#1 is diagnostic  
Console port

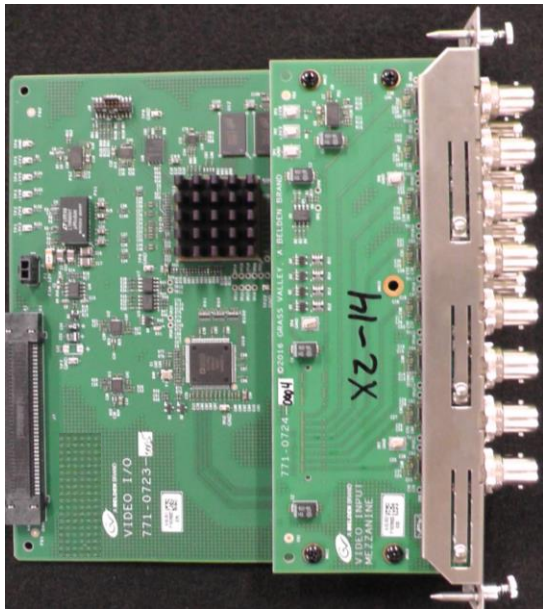


6C - 8



## V series Frame – Video I/O Board

8 SDI Inputs  
4 SDI outputs  
1 'Video' input



6C - 9

The V-series frame can also be populated with a VPE board, a controller board and an optional iDPM board.

The Controller has 2 dedicated MultiViewers and the Image Store.

---

---

---

---

---

---

---

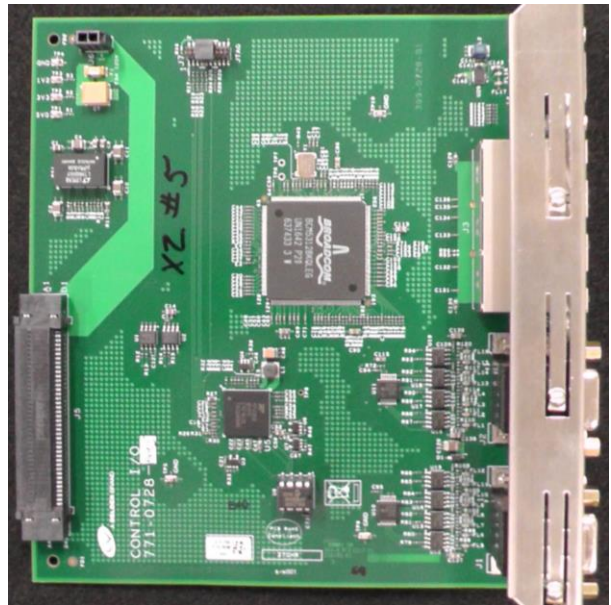
---

---

---

## V series Frame – Controller I/O Board

6 Ethernet Ports  
4 Serial Ports  
1 Console Port



6C - 10

The V-series frame can also be populated with a VPE board, a controller board and an optional iDPM board.

The Controller has 2 dedicated MultiViewers and the Image Store.

---

---

---

---

---

---

---

---

---

---

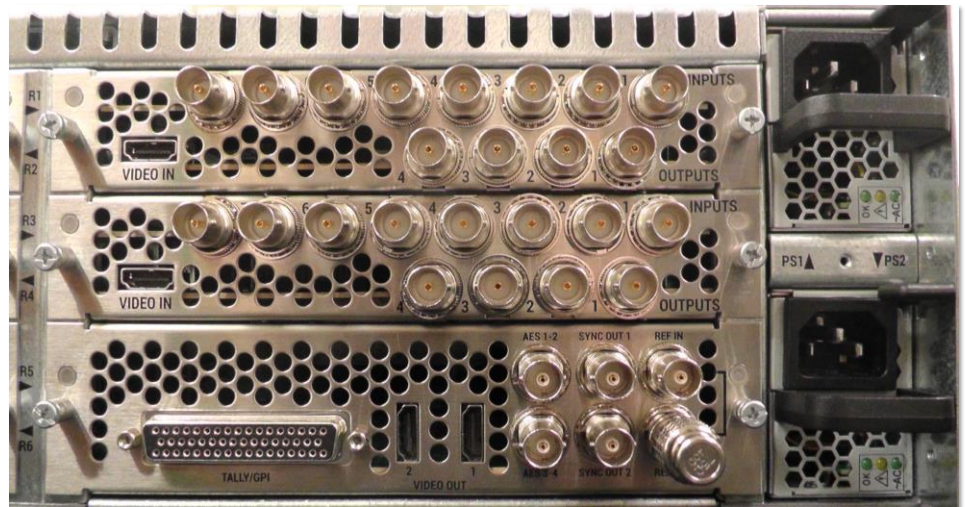
## V-series Frame – Rear Right hand side

2 I/O Modules

Reference  
Module

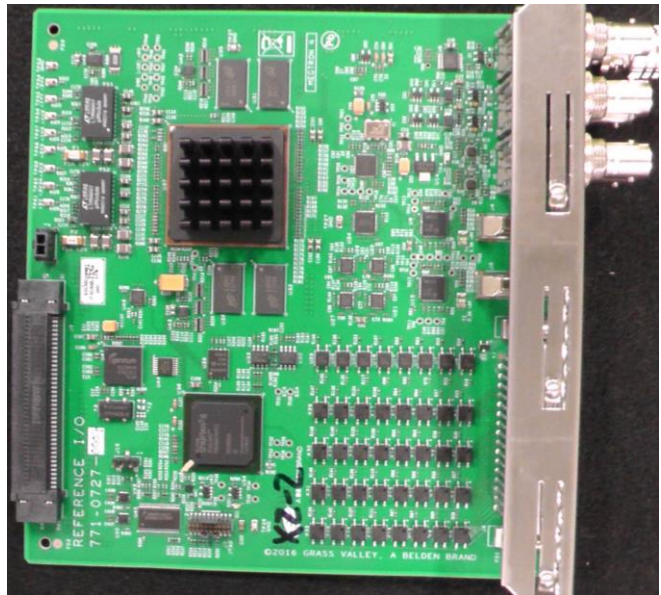
Tally/GP  
2 Media Out  
Ref Loop  
Sync Out (2)

2 Power  
Supplies



## V-series – Reference I/O Board

- 1 Reference In Loop through
- 2 Reference Outputs  
(Generated from the  
Reference Input)
- 1 GPI and Tally connector
  - 32 Tally
  - 8 GPI In
  - 8 GPI Out
- 2 Media Outputs



6C - 12

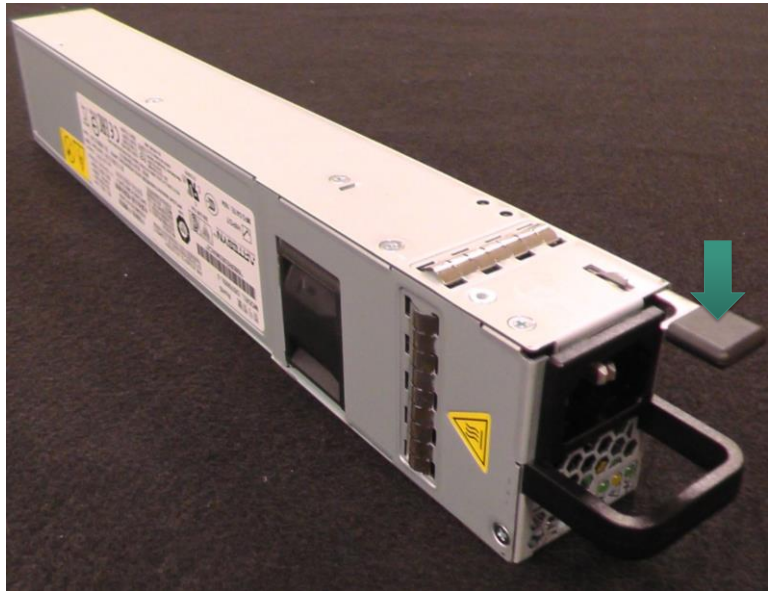
The V-series frame can also be populated with a VPE board, a controller board and an optional iDPM board.

The Controller has 2 dedicated MultiViewers and the Image Store.

## V-series – Power Supply

### Hot Swappable Power Supplies

Push down and hold the ejection tab down to remove the supply



6C - 13