



grass valley

A **BELDEN** BRAND

KAYENNE/KARRERA

VIDEO PRODUCTION CENTER

Release Notes

Software Version 8.2

CERTIFICATE

Certificate Number: 510040.001

The Quality System of:

Grass Valley USA, LLC and its Grass Valley Affiliates

Headquarters:

400 Providence Mine Road
Nevada City, CA 95945
United States

15655 SW Greystone Ct.
Beaverton, OR 97006
United States

Kapittelweg 10
4827 HG Breda
The Netherlands

2300 So. Decker Lake Blvd.
Salt Lake City, UT 84119
United States

Including its implementation, meets the requirements of the standard:

ISO 9001:2008

Scope:

The design, manufacture and support of video and audio hardware and software products and related systems.

This Certificate is valid until:	June 14, 2015
This Certificate is valid as of:	June 14, 2012
Certified for the first time:	June 14, 2000



H. Pierre Sallé
President
DEKRA Certification, Inc

The method of operation for quality certification is defined in the DEKRA General Terms And Conditions For Quality And Environmental Management Systems Certifications.
Integral publication of this certificate is allowed.

DEKRA Certification, Inc.
4377 County Line Road
Chalfont, PA 18914
Ph: (215)997-4519
Fax: (215)997-3809

CRT 001 042108

Accredited By:
ANAB





grass valley

A **BELDEN** BRAND

KAYENNE/KARRERA

VIDEO PRODUCTION CENTER

Release Notes

Software Version 8.2

Copyright & Trademark Notice

Copyright © 2015, Grass Valley USA, LLC. All rights reserved.

Belden, Belden Sending All The Right Signals, and the Belden logo are trademarks or registered trademarks of Belden Inc. or its affiliated companies in the United States and other jurisdictions. Grass Valley is a trademark or registered trademark of Grass Valley USA, LLC. Belden Inc., Grass Valley USA, LLC, and other parties may also have trademark rights in other terms used herein.

Grass Valley Web Site

The Grass Valley Web (www.grassvalley.com) site offers the following:

Online User Documentation — Current versions of product catalogs, brochures, data sheets, ordering guides, planning guides, manuals, and release notes are available.

FAQ Database — Solutions to problems and troubleshooting efforts can be found by searching our Frequently Asked Questions (FAQ) database.

Software Downloads — Download software updates, drivers, and patches.

Grass Valley Technical Support

For technical assistance, contact our international support center, at 1-800-547-8949 (US and Canada) or +1 514 333 1772.

To obtain a local phone number for the support center nearest you, please consult the Contact Us section of Grass Valley's Web site (www.grassvalley.com).

An online form for e-mail contact is also available from the Web site.

Recycling

Visit www.grassvalley.com for recycling information.

Contents

Copyright & Trademark Notice	4
Grass Valley Web Site	4
Grass Valley Technical Support	4
Recycling	4
 KAYENNE and KARRERA K-Frame Release Notes	7
Introduction	7
New in Release 8.2.	7
ClipStore 1080p Requirements	8
ClipStore 1080p Upgrade Kit	8
Configure the GV Switcher for ClipStore 1080p Clips	8
Disable Control Panel Macro Attachments	9
AMP Server Channels Increased to Sixteen	9
NetConfig Supports Windows 8.1	9
About the Kayenne/Karrera K-Frame Software Update	10
Third-party Updates	10
Sample Files	10
Materials Required	11
Update the Kayenne/Karrera K-Frame Software	11
Backup Current Configuration and Effects Files	11
Deploy Switcher Update Package Files and Installer	12
K-Frame Installer Program Description	13
Update the System.	15
About Updating Spare Kayenne Control Panel Modules	16
Update/Install the Menu Panel Application.	16
About Updating the HAD FPGA	19
Clear NV RAM for Control Panel and Frame	19
Install .NET for First Time Menu on PC Installation	20
Soft Panel Installation	21
Install NetConfig and Newton Configurator (Optional)	21
Check Software Versions	22
Confirm System Operation	22
Backup New Configuration and Effects Files	23
Update Other Grass Valley Switcher Systems Software	23
Individual Switcher System Component Update	23
K-Frame Software Removal With Windows OS	23
Deployment Archive Files	24
Calibrate the Kayenne Lever Arm and Joystick	24
Calibrate the Karrera Lever Arm and Joystick	25
K-Frame System Default IP Addresses	25
IP Addresses and Single Control Surface Systems	26
IP Addresses and Multiple Control Surfaces and Suites	26

KAYENNE and KARRERA K-Frame Release Notes

Introduction

This document describes new features, installation, and other information specific to Kayenne/Karrera K-Frame Video Production Center Release 8.2 software. See [page 11](#) for system update instructions.

New in Release 8.2

- 1080p Support Added to ClipStore (see *ClipStore 1080p Requirements* [on page 8](#) and *Configure the GV Switcher for ClipStore 1080p Clips* [on page 8](#))
- Disable Control Panel Macro Attachment (see *Disable Control Panel Macro Attachments* [on page 9](#))
- AMP Server Channels Increased to Sixteen (see *AMP Server Channels Increased to Sixteen* [on page 9](#))
- NetConfig Support for Windows 8.1 (see *NetConfig Supports Windows 8.1* [on page 9](#))

ClipStore 1080p Requirements

ClipStore 1080p input line rate hardware, software, and licensing requirements.

Table 1. *ClipStore 1080p Requirements*

ClipStore Server	Licensing
Version 9.4 or newer server software	AppCenterElite license
Summit 3G CODEC boards	Summit 3G CODEC board licenses for each board
Summit 3G CODEC mezzanine boards	AVC-Intra Class 100 license
Solid State Drives	HD 1080p license

ClipStore 1080p Upgrade Kit

The 1080p upgrade kit is available for Summit 3G ClipStore servers; CLPS-4CH-KIT is available through your salesperson or by contacting Grass Valley Customer Service.

Configure the GV Switcher for ClipStore 1080p Clips

For playback, we recommend you only use clips in sequence from the same directory and single compression format: AVC-Intra for best video quality and compression ratios or DVCPRO HD for the fastest response times. ClipStore records clips in AVC-Intra single compression format.

Prerequisite:

The correct ClipStore IP Address is entered and the Connection Status is enabled (green) in the Eng Setup, Node Settings, Frame Suite Nodes & ID menu. ClipStore channels and HD 1080p are present in the Eng Setup, Status menu.

1. Select **Eng Setup, ClipStore Config** in the menu.
2. Select **1080p** under Input Line Rate in the ClipStore Global Record Setup pane.
3. Select **Send to ClipStore** in the ClipStore Config pane.

Result:

1080p clips can be played back and recorded with ClipStore from the GV Switcher.

Disable Control Panel Macro Attachments

Macros can be attached from the Control Panel using button presses but operators can disable this feature if desired, to avoid accidental macro attachments. Currently assigned macros remain available and macros can be assigned to Control Panel buttons using the GV Switcher Macros menu. The tally color of the Macro Attach Enable button will change on the Control Panel when disabled.

1. Select **User Setups, Panel Prefs, Panel User Interactions** in the Switcher menu.
2. Turn off the **Macro Attachable** button  in the Panel User Interactions menu by selecting it to disable the Control Panel Attach Macro feature. The default state is on (highlighted).

AMP Server Channels Increased to Sixteen

AMP server channels have been increased from six to sixteen. AMP server channels are added in the Eng Setup, Ports & Devices, External Devices menu. See the Installation & Service Manual for your switcher model for more information about adding external devices.

NetConfig Supports Windows 8.1

NetConfig Version 2.1.0.5700 or newer supports Windows 8.1. NetConfig is launched from the K-Frame Installer program see *K-Frame Installer Program Description* [on page 13](#).

About the Kayenne/Karrera K-Frame Software Update

Kayenne/Karrera K-Frame systems are shipped with the current software version installed. Updates to K-Frame system software are available for download from the Grass Valley website. Software installation tools are provided with each update package.

The K-Frame Deployment Tool extracts and copies Grass Valley switcher system files to a Menu Panel or PC. These files include the K-Frame Installer Program.

The K-Frame Installer Program is used to install the extracted software to Grass Valley Video Processor Frame(s) and Control Panel(s) over the network. The K-Frame Installer Program also launches other installation tools (wizards). One wizard installs the Menu application directly on the Menu Panel or PC running the installer program. If multiple Menu Panels (or PCs running the Menu application) exist, each must be updated individually. Installation wizards can also be launched for the KSP and NetConfig features.

Third-party Updates

Certain Third-party libraries are needed on the PC that runs the Menu software and Switcher Installer software. These “Third-party Updates” are available in a directory on the Grass Valley Switcher Software Download Site. They are also included on the Switcher Software USB Memory Stick shipped with each Grass Valley switcher system. The Third Party Updates also include a Menu Auditor program. The Menu Auditor Program is run to verify that the required Third Party Updates are installed on a PC or Menu PC. The Menu Auditor will indicate which updates need to be installed to create an up-to-date system. Not having the updates installed could cause the menu to be unstable or not run at all.

To check for the third party updates on a PC or the menu system, run the Menu Auditor Program and press Scan. The Auditor will check each relevant install and indicate the state of the computer environment. The Diagnose button runs the scan and puts windows machine data into a file for diagnostic purposes.

The user can bring the environment up to date by installing identified Third Party Updates which can be downloaded from the Grass Valley Web site.

Sample Files

Sample show files or other elements and instructions for use are available with an installer from the Grass Valley website starting with version 8.0. When upgrading, install the samples after the initial software upgrade;

visit www.grassvalley.com. The installer can be used to place the K-Frame samples in the C:\K_Frame\user\Samples directory on the GV Switcher system. New K-Frame systems are shipped with the sample directory installed.

Note For Compact S-series Frames, samples that are built using more than four keyers will need some customization before incorporating those elements into a production.

Materials Required

You will need the following materials for this update:

- Version 8.2 Software; **K-FrameSetup.exe**, which can be downloaded from the Grass Valley Customer Support website along with the latest Clip-Store/Summit software, Release Notes, and Release Notes Addendum, and copied to a USB stick,
- Backup media for configuration and effects files,
- USB mouse and keyboard, and
- a Menu Panel, or user PC, properly configured on the switcher system network.

Update the Kayenne/Karrera K-Frame Software

Backup Current Configuration and Effects Files

This software update procedure assumes your Grass Valley switcher system is fully operational with all network communications properly configured. Refer to the *Karrera K-Frame* or *Kayenne K-Frame Installation and Service Manual* for configuration instructions.

1. Save your system configuration files (Eng Setup, User Setups), and your operational registers (EMEM, Macros, etc.) and other settings. You can create a Show file that contains all this information. See the *Karrera* or *Kayenne K-Frame User Manual* for file operations instructions.

Note A convenient location to save these backup files is on the USB stick of the software version that created the files (the older software being updated). Create a new folder on that older software USB stick for the file and name the Show file with the current date.

2. Store the backup media in a safe place. You may want to use these files if you decide to back down to that earlier software version.

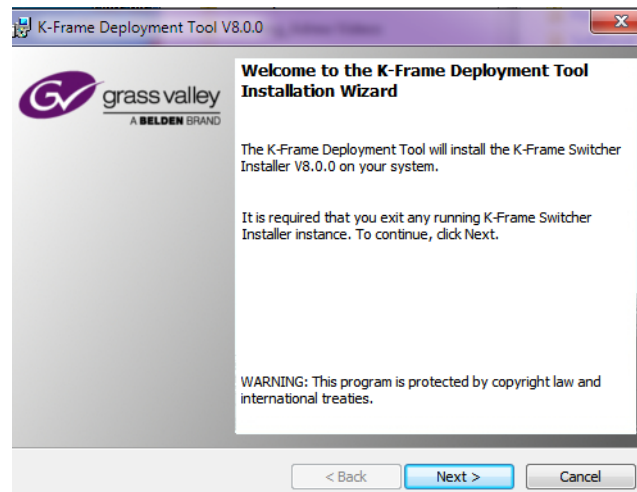
Deploy Switcher Update Package Files and Installer

1. Exit the Menu application and any other applications that may be running on the Menu Panel or PC.
2. Disable any virus protection, Windows firewall, and any other firewall protections that may have been installed on the Menu Panel or PC. Firewalls must be inactive to allow switcher system software installation over the network.
3. Run the K-Frame Setup application. Either:
 - Insert the K-Frame Software USB stick into an available port on the Menu Panel or PC. Locate the removable disk in My Computer and double-click on the **K-FrameSetup.exe** and click **OK**.
 - or -
 - Download the **K-FrameSetup.exe** file from the Grass Valley download site, double-click on the file, then click **OK**.

Note If the same K-Frame Deployment Tool version files are detected, a Repair/Remove screen is displayed, allowing re-installation or removal of the Deployment files.

4. The K-Frame Deployment Tool will then launch, click **Next**.

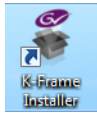
Figure 1. K-Frame Deployment Tool Welcome Screen



5. Accept the license agreement and click **Next**.
6. Click **Next** to accept the default deploy location. Alternatively, you can Browse to a different location to deploy the files. The Ready to Install the Application Screen appears next.
7. Click **Next** to deploy the files.

8. When the deployment completes the K-Frame Installer Program will launch automatically.

Figure 2. Installer Icon

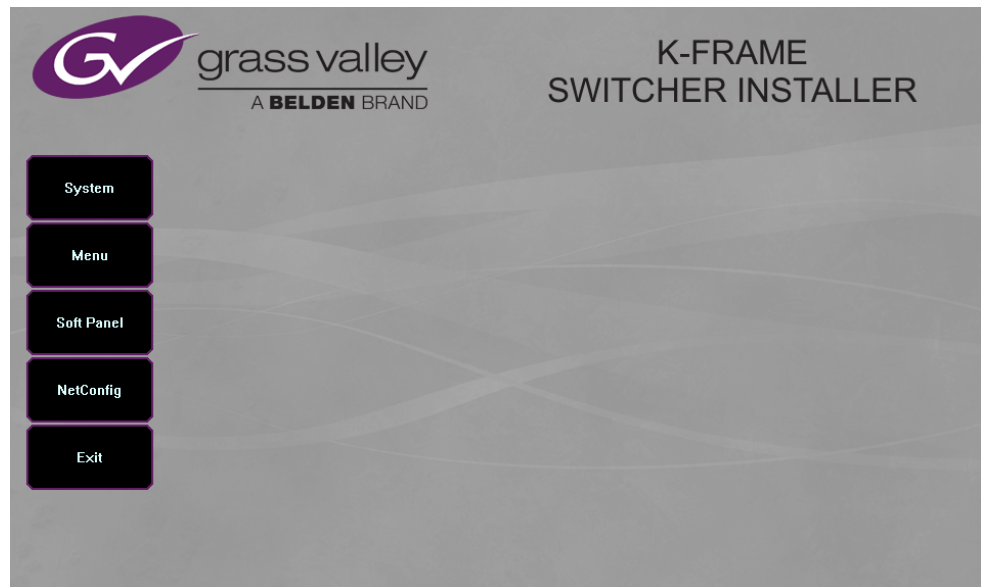


After the switcher files have been deployed, the K-Frame Installer Program can be launched at any time by clicking on its desktop icon.

K-Frame Installer Program Description

The K-Frame Installer Program initial screen has buttons on the left used to select various installers.

Figure 3. K-Frame Installer Program Initial Screen

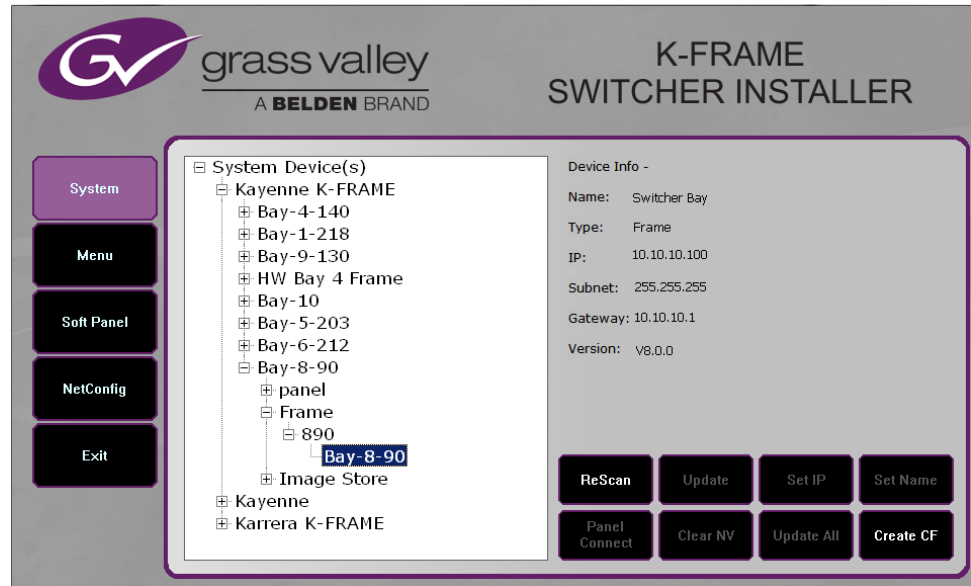


The **Exit** button at the bottom left closes the K-Frame Installer Program.

When **System** is selected, a screen appears with an expandable central hierarchy window, information on the upper right, and function buttons on the lower right.

Navigate to the Kayenne or Karrera device in the hierarchy to display information for that device or install software. The same methods of installation work for both products.

Figure 4. K-Frame Installer Program Expanded Hierarchy Window



System Devices is at the top of the hierarchy window. Clicking on that item displays the types of switchers (**Kayenne** and/or **Karrera**) residing on the network. Clicking on a switcher type displays the system names present on the network of that switcher type. Each system name is taken from the Video Processor Frame name. Clicking on a system name reveals **Frame**, **Panel**, and optional **Image Store** items for that system, which when opened allows selection of the individual devices making up that system. When a specific device is selected, information for it is displayed on the right. This hierarchy allows easy identification of each switcher system's components when multiple switchers reside on the same network.

The K-Frame Installer program has the following other features, accessed by clicking on its labeled button:

Rescan - Re-scans the network for devices. This refreshes the screen to show the currently connected components and any modified system names.

Update - Updates the software on the selected device using the software deployed with this K-Frame Installer version.

Set Name - Opens a window allowing you to change the name of the selected device.

Set IP - (Control Panel selected in hierarchy window) - Opens a window allowing you to enter the IP address the Control Panel will use to communicate with the Video Processor Frame.

Clear NV - (Frame or Control Panel selected) Clears NV Memory.

Update All - (System selected) Updates software to all devices for the selected system, excluding Menus.

Create CF - Allows the creation of a Control Panel Compact Flash Card onto another CF Card.

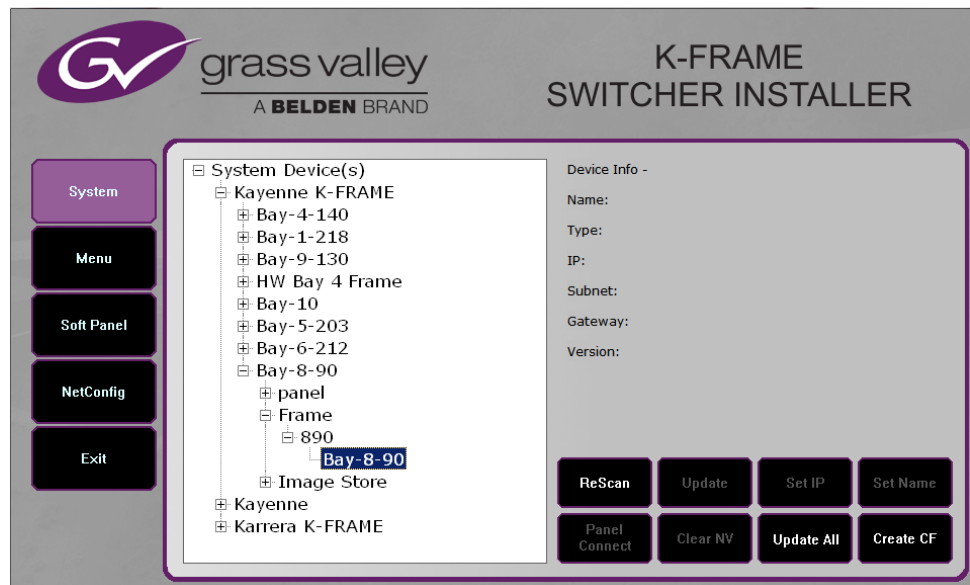
CAUTION This formats the CF card.

Update the System

A system's Video Processor Frame, Control Panels, and optional Image Stores can be updated with one operation.

1. With the K-Frame Switcher Installer Program launched, click on the **System** button.

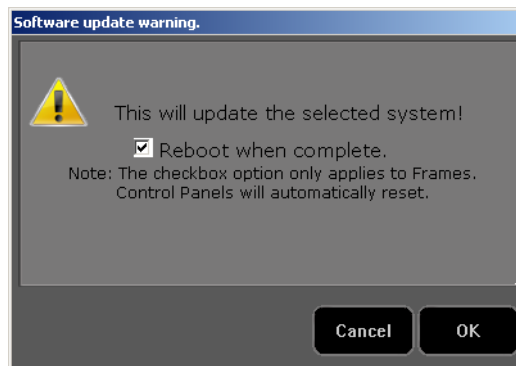
Figure 5. K-Frame Installer, System Button Selected



2. Each K-Frame Switcher system consists of a Video Processor Frame, associated PCU(s) (Control Panels), and optional Image Store. Use the mouse to navigate to the desired system (not an individual system device). When a system has been selected the **Update All** button becomes active.

3. Click **Update All**. The following reboot message appears.

Figure 6. K-Frame Installer, Reboot Screen



4. If the **Reboot when complete** box is checked, the Video Processor Frame, optional Image Store, and all associated Control Panels will automatically reboot after the software update. If the box is not checked, you will need to manually reboot the Video Processor Frame and optional Image Store after the software files have finished being transferred to them. Control Panels are always rebooted after a software update.
5. Click **OK**.
6. Click **Finish** when complete.

About Updating Spare Kayenne Control Panel Modules

The Kayenne K-Frame Control Panel FPGAs will automatically be updated with software installation. However spare Kayenne Control Panel Modules must be connected to the Control Panel after initial software installation and the Control Panel software re-installed so all modules are loaded with the current FPGAs and ready for use when needed.

CAUTION Do not interrupt power to GV switcher systems during software installation; the FPGAs will revert to an older version. If power is lost during software installation, install the software once the power has been restored.

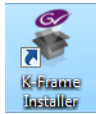
Update/Install the Menu Panel Application

The first-time installation of the Menu application onto a user PC may require installing Windows .NET Framework software. See *Install .NET for First Time Menu on PC Installation* [on page 20](#) for more information.

The K-Frame Deployment Tool must be run on each Menu Panel or PC onto which you will be installing the Menu Panel application. See *Deploy Switcher Update Package Files and Installer* [on page 12](#).

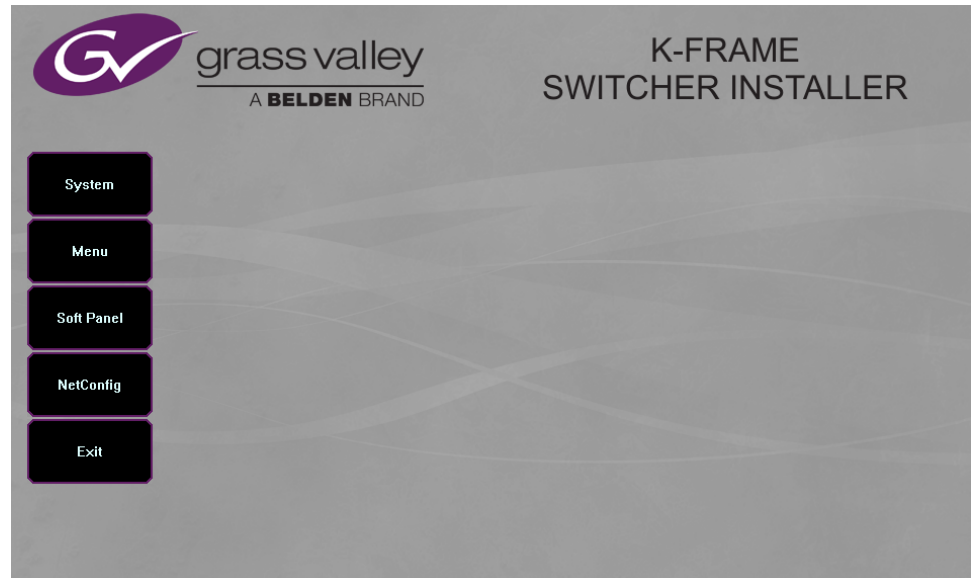
CAUTION For Menu on PC, you must be logged on as administrator or the installation will fail.

Figure 7. Installer Icon



1. Click on the K-Frame Switcher Installer desktop icon, if necessary, to launch the K-Frame Switcher Installer Program.

Figure 8. K-Frame Installer Program Initial Screen



2. Click the **Menu** button. The K-Frame Menu Installation tool will launch.

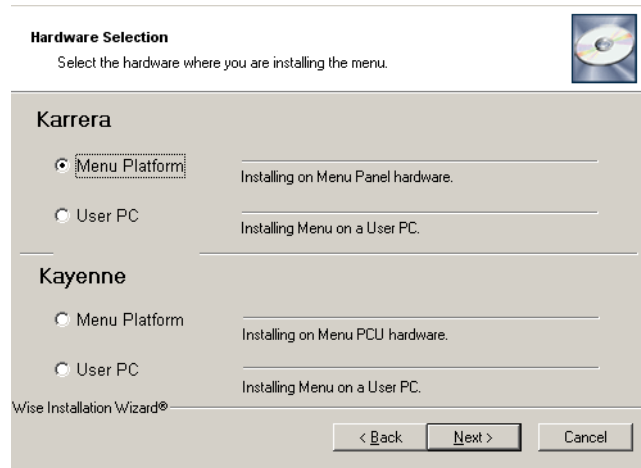
Figure 9. K-Frame Menu Installer



3. Click **Next**.

4. In either the Karrera or Kayenne Control Panel area, choose either **Menu Platform** (the Touch Screen Menu Panel) or **User PC**, and click **Next**.

Figure 10. K-Frame Menu Installer, Hardware Selection



5. Enter a name and organization in the User Information screen, leave the **Anyone who uses this computer** setting selected, and click **Next**.

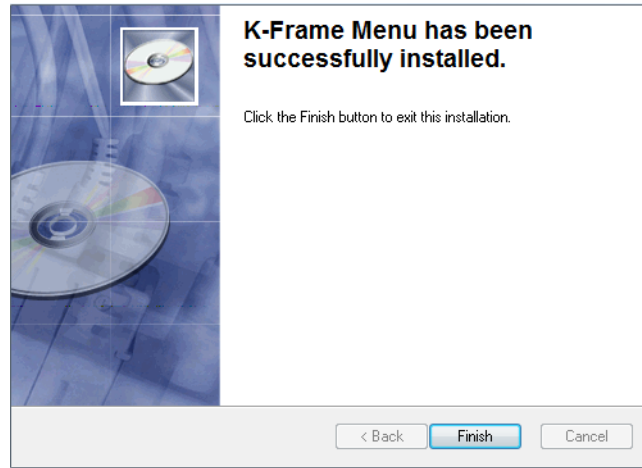
Note Selecting **Only for me** limits some settings to the currently logged in user. This may be appropriate if the Menu application is installed onto a PC shared by several users. However, this is not a fool-proof security method and should not be relied on for mission-critical applications.

6. Click **Next** to accept the default installation location. Alternatively, you can Browse to a different location to install the application.
7. In the Ready to Install the Application menu, click **Next**.

8. When done, the Menu Successfully Installed screen appears, Click **Finish**.

If you installed onto Menu hardware you will be prompted to reboot the computer.

Figure 11. K-Frame Menu Installer Success



9. Click **Exit** and answer **Yes** to the prompt to exit the K-Frame Installer.

Figure 12. Switcher Menu Icon



Clicking on the K-Frame Menu icon now launches the new version of the Menu Panel application.

About Updating the HAD FPGA

Each CPU or Image Store board installed in a Grass Valley K-Frame Video Processing Frame has a PCI Express endpoint for communication with the host processor. These PCI endpoints are governed by the HAD FPGA. Software updates can include firmware updates for these endpoint HADs.

For HAD FPGA update instructions, see the maintenance information in the Installation & Service Manual for your switcher model.

CAUTION It is recommended that HAD (Host Address Decoder) FPGA (Field Programmable Gate Array) updates are performed by qualified personnel only, i.e. an EIC (Engineer In Charge).

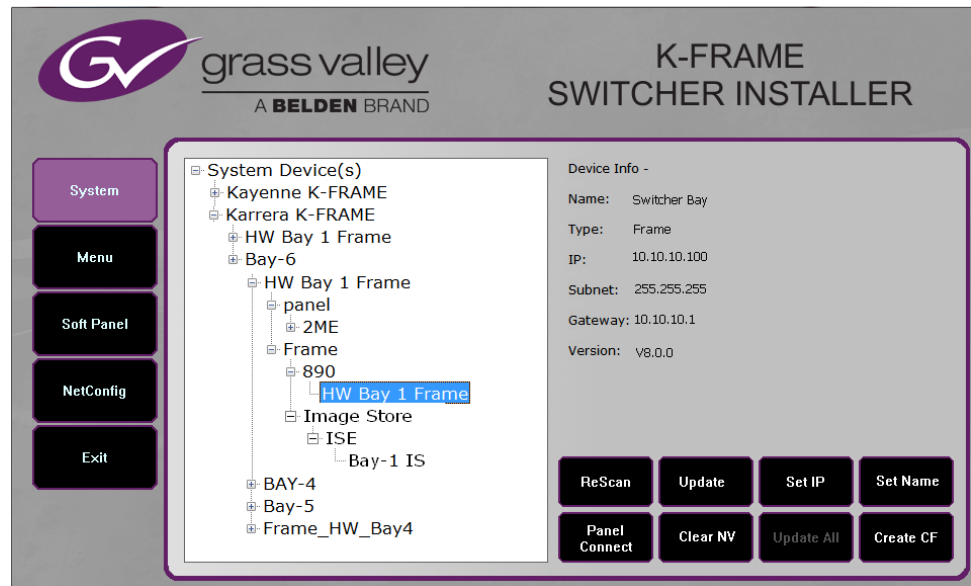
Clear NV RAM for Control Panel and Frame

Use the following procedure on the Menu Panel or Menu on PC running the Menu Panel application that operates with the updated Video Processor Frame.

Note A new Menu Panel or PC that has not been used with the switcher system will need to be configured as a Control Surface Node before it can operate with a switcher system. See the *Karrera or Kayenne Installation and Service Manual* for specific instructions.

From the K-Frame Installer menu, touch the **System** button and touch the device to be cleared. Touch the **Clear NV** button. Repeat for Control Panel and Frame.

Figure 13. K-Frame Installer Program Clear NV



Install .NET for First Time Menu on PC Installation

The Windows .NET Framework software is required for Menu on PC application operation, you can go to the PC's Add or Remove Programs to see what, if any .NET versions have already been installed. The Menu application requires at least .NET version 4.0 for XP or 4.5 for Windows 7 to operate and other third party software listed in the Third-party updates folder on the download site.

The .NET framework software is included on the K-Frame Software USB stick, and is also available on the Grass Valley website.

1. Insert the K-Frame Software USB stick into the PC's USB port.
2. Open the Third-party Updates folder, and in the **DotNet** folder run:
 - For Windows XP: dotNetFx40_Full_x86_x64.exe, or
 - For Windows 7: dotNetFx45_Full_x86_x64.exe file.

Files will be extracted to your PC and then the .NET Framework Setup application will run. Accept the license agreement and click **Install**.

3. When done, the message **Download complete. You can now disconnect from the Internet** will be displayed. Exit the .NET installer application and relaunch the K-Frame Installer Program.
4. You will now be able to install the Menu application onto the PC (see *Update/Install the Menu Panel Application* [on page 16](#)).
5. Add the PC's Name and IP Address with the Menu on PC software to the node list in the Eng Setup, Control Surfaces menu. For more information, see the *Kayenne or Karrera Installation & Service Manual*.

Soft Panel Installation

Clicking on the **Soft Panel** button launches an individual installer for the KSP option. This installer is similar to the Menu Panel installer, and is intended for customer provided PC (not a Menu Panel). Follow the directions displayed to install KSP onto that PC. See the *KSP Switcher Soft Panel Graphical User Interface Instruction Manual* for more information.

Soft Panel requirements:

- The installed menu software matches the K-Frame system
- 1920 x1080 display resolution
- Microsoft .NET Framework 4.0 for XP/4.5 Windows 7 (see [Install .NET for First Time Menu on PC Installation](#)).
- Microsoft Visual Studio 2010. The file is named vc_redist_x86.exe and is included in the Third-party Updates\VisualStudio2010 folder.

Add the PC's Name and IP Address with the KSP software to the node list in the Eng Setup, Control Surfaces menu.

The KSP option is activated with a purchased license key.

Install NetConfig and Newton Configurator (Optional)

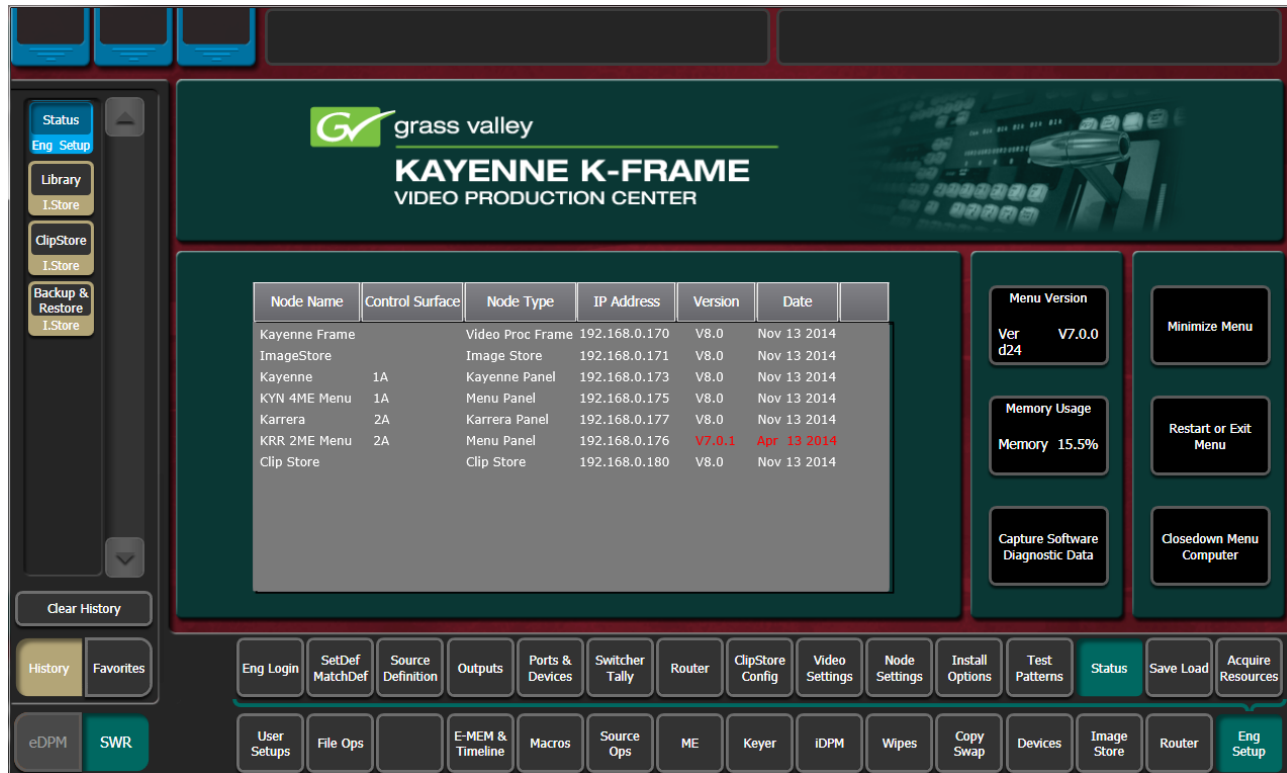
Clicking on the **NetConfig** button launches an individual installer similar to the Menu Panel installer. Both NetConfig and the Newton Configurator plug-in will be installed. Follow the directions displayed to install these applications onto that Menu Panel or PC.

Note The K-Frame Installer Application and the separate NetConfig application cannot run simultaneously on the same Menu Panel or PC.

Check Software Versions

Launch the Menu application. The Status Menu will list the switcher system devices. Ensure all the components are running the same software version. Mismatched versions will be reported with red text.

Figure 14. Mismatched Software Versions—K-Frame



Confirm System Operation

1. Check that all the installed MEs are operational. Select different crosspoints on the Control Panel and fly a key with an iDPM.
2. Check that any software enabled options operate correctly. Existing authorization codes should work with the new software.
3. Check that EMEMs run properly. Older effects should work with the new software. If there are differences, however, you will need to edit or rebuild the effect with the new software version.
4. Reload the Macros and check that they operate correctly.
5. Load some Image Store images and confirm they display correctly.

Backup New Configuration and Effects Files

1. When you are satisfied with system operation, save the new configuration files and effects as a Show file to a folder you've created on that version's K-Frame Software USB stick.
2. Label the media with the version and date and store it in a safe place.
3. Reactivate any virus protection on the Menu panel that may have been disabled at the start of this procedure.

This completes the standard switcher system software update procedure.

Update Other Grass Valley Switcher Systems Software

More than one switcher system (multiple Video Processor Frames) may reside on your network. Each system can operate simultaneously with different software versions, as long as all the components in each system run the same software version.

Additional switcher systems are updated using the same procedure described before.

1. Select the other switcher system on the K-Frame Installer Program System hierarchy screen, and choose **Update All**.
2. Insert the K-Frame Software USB stick into each Menu Panel or PC associated with that switcher system and choose the **Menu** software update button.

Individual Switcher System Component Update

Individual components can be selected for update (just the Video Processor Frame, optional Image Store, or just one Control Panel). However, all components of a switcher system must run the same software version. If updating components individually, make sure they all are at the same version before resuming K-Frame system operation.

CAUTION Allow the Video Processor Frame and optional Image Store to completely finish rebooting before attempting to install Control Panel software. The Control Panel update process requires the Frame to be operational.

K-Frame Software Removal With Windows OS

K-Frame Deployment Tool versions and Menu Panel programs can be removed using standard Windows techniques (Setup/Add or Remove Programs/Uninstall or Change Programs, etc.).

Deployment Archive Files

When new software versions are installed with the K-Frame Deployment tool, older version deployment files are not automatically removed. Each K-Frame deployment creates its own software version folder. If the default installation location, or the same alternative destination, is always chosen, all the version folders will be listed together.

Default destinations:

- C:\Program Files (x86)\ Grass Valley \ GV Switcher \ K_Frame_Switcher_VX.X for 64-bit
- C:\Program Files\ Grass Valley \ GV Switcher \ K_Frame_Switcher_VX.X for 32-bit systems.

Running the K_FrameInstaller.exe file in any version's folder will permit installation of that version's files.

CAUTION Before installing an older version of the Menu Panel application, you must first un-install the newer, currently installed Menu Panel version, either using that newer version's K-Frame Deploy Tool or Windows Add/Remove Programs.

Note All the components of a switcher system must run the same software version. If you want to return to an earlier version of software, you should back-down the software on the Video Processor Frame, all Control Panels, and all Menu Panel applications used with that switcher system.

Calibrate the Kayenne Lever Arm and Joystick

It is recommended that the Kayenne Control Panel Lever Arm (for each Transition Module) and Joystick be calibrated after a software update.

1. Press and hold down the two left (**Exchange ME/Ptn Limit**) and two right (**EMEM Run/Trans Rate**) buttons located just above the Lever Arm.
2. Follow the instructions on the Transition Module status display to calibrate the Lever Arm.
3. From the Home menu in the Multi-Function Module, press **Panl, Cali** and follow the instructions on the status display to calibrate the joystick.

Calibrate the Karrera Lever Arm and Joystick

It is recommended that the Karrera Control Panel Lever Arm (for each Transition area) and Joystick be calibrated after a software update.

1. On any Karrera panel EMEM area, press **Menu, Page**.
2. Select **Calib**, choose the ME Lever Arm or Joystick to calibrate, and follow the instructions displayed.

Lever 1 is the topmost Lever Arm on the panel.

K-Frame System Default IP Addresses

K-Frame systems are shipped with default IP addresses. These default addresses can be used if the K-Frame system is operating on a dedicated network with no other devices present. Note that these addresses can be changed during installation, and so your system may not be using these defaults.

Table 2. Kayenne/Karrera K-Frame System Default IP Addresses

Device	IP Address
Video Processor Frame CPU	192.168.0.170
Image Store CPU	192.168.0.171
Control Panel Surface 1A	192.168.0.173
Touch Screen Menu Panel 1	192.168.0.175
Touch Screen Menu Panel 2	192.168.0.176
Control Panel Surface 1B	192.168.0.177
Control Panel Surface 2A	192.168.0.178
Control Panel Surface 2B	192.168.0.179
ClipStore Server	192.168.0.180
32-Crosspoint Remote Aux Panels V1.6.5 and higher software: (hard reset with the front panel buttons)	IP Address: 192.168.1.2 Frame IP: 192.168.1.1 Gateway IP: 192.168.1.1 Subnet Mask 255.255.255.0 Note 32-Crosspoint Remote Aux Panel default settings must be changed to operate with a Karrera system whose other components are configured with their default IP addresses.
All Subnet Masks)	255.255.255.0
All Gateways (except V1.6.5 software Remote Aux panel)	192.168.0.1
Reserved For Future Use	CAUTION Do not connect any devices configured with the following IP addresses to a Karrera network.
Video Processor Frame Gigabit Ethernet	192.168.0.172
PCU Panel Reserved LAN Port	192.168.0.174

Note Customer orders with multiple Control Panels will be pre-configured to the listed IP addresses. However, if one of these additional Control Panels is reset to factory defaults, it will be given the standard 1A default 192.168.0.173 address.

IP Addresses and Single Control Surface Systems

A new Grass Valley system will operate on an isolated network with the default IP addresses configured at the factory (except for 32 Crosspoint Remote Aux panels). However, if you wish to integrate the system into an existing network, wish to use gateway communications, or wish to add more control surface components, then the IP addresses may need to be changed.

IP Addresses and Multiple Control Surfaces and Suites

If you plan to use multiple control surfaces (for example, more than one Control Panel or more than one Menu Panel) with the same Video Processor frame, you must make sure the IP addresses of the additional items are unique before connecting them to the network. Using default IP addresses will cause network conflicts and unpredictable system operation.

See the *Installation and Service Manual* for your switcher model for specific information about network configuration.