

## Section 8 - Kayenne/Karrera Special Operations



8 - 1

## Kayenne/Karrera Technical Special Operations

- Software Installation
  - Software Locations
  - Installer - Deployment Tool
  - System / Network Tools
    - Names & Addresses
    - Clear NV RAM
    - Frame & Panel (PCU) Software Upgrade
    - Creating Compact Flash Images
  - Menu Upgrade / Installation



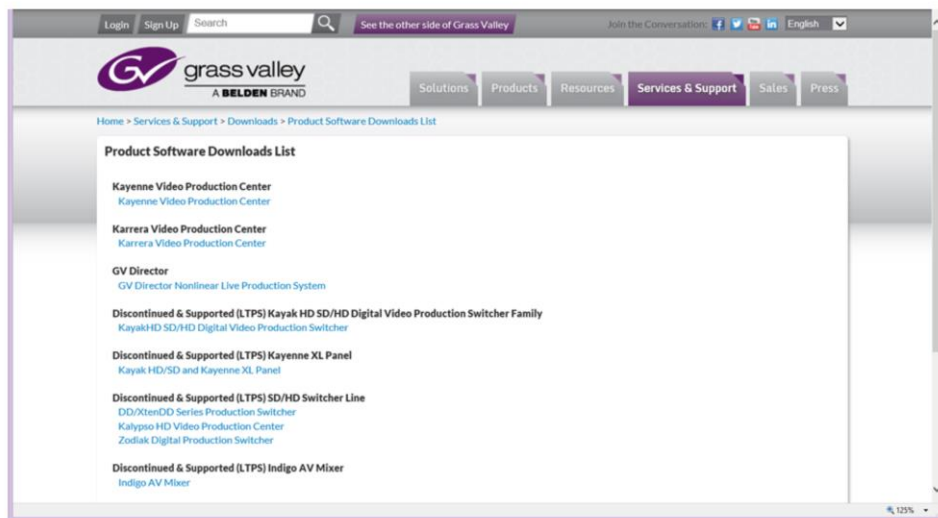
## Section 8 – Objectives

### Section Objectives

- Know where to obtain software for a Kayenne/Karrera system
- Know how to run the software Installer
- Understand how to load individual files to a Kayenne/Karrera Panel and Frame
- Know how to clear NV RAM and the implications of doing this
- Know how to back up and reload files
- Understand compatibility issues between old and newer software
- Understand the requirements for uploading software to the Menu
- Know how to install any third party software to the Menu PC
- Know the requirements for the KSP PC and how to install software
- Know how to create and install CF cards



## Kayenne/Karrera Software - Grass Valley Web (1)



[Home](#) > [Services & Support](#) > [Downloads](#) > [Product Software Downloads List](#)



8 - 4

## Kayenne/Karrera Software - Grass Valley Web (2)

The screenshot shows the Grass Valley website's 'Kayenne/Karrera software download page'. The page includes a navigation bar with links for Solutions, Products, Resources, Services & Support, Sales, and Press. The main content area lists hardware/software versions: Kayenne K-Frame, Karrera K-Frame, Kayenne with Video Processor Boards 771-0060-03, Karrera with Video Processor Boards 771-0060-04, Third Party Software, and ClipStore. A blue arrow points from the 'GO' button next to 'Kayenne K-Frame V6.0.3' to an FTP directory listing window. The FTP window shows the directory 'ftp://ftp.grassvalley.com/switcher/K-Frame/V6.0.3/' with a file named 'V6.0.3.zip'.

**Kayenne/Karrera software download page**

The Kayenne manuals and software release notes are available at our [Grass Valley documentation web page](#)

The Karrera manuals and software release notes are available at our [Grass Valley documentation web page](#)

Contact Grass Valley Customer Service if you have questions or encounter any problems:  
1-800-547-8949 or 530-478-4148

Select from the following hardware/software versions:

- Kayenne K-Frame
- Karrera K-Frame
- Kayenne with Video Processor Boards 771-0060-03
- Karrera with Video Processor Boards 771-0060-04
- Third Party Software
- ClipStore

Kayenne K-Frame

Karrera K-Frame

For Video Processor Boards 771-0060-03 or earlier please use v3.x software

**FTP directory /switcher/K-Frame/V6.0.3/ at ftp.grassvalley.com - Internet Ex...**

**FTP directory /switcher/K-Frame/V6.0.3/ at ftp.grassvalley.com**

To view this FTP site in File Explorer: press Alt, click View, and then click **Open FTP Site in File Explorer**.

[Up to higher level directory](#)

03/05/2014 05:42PM 505,311,568 [V6.0.3.zip](#)



## Software Updates

- **ALWAYS** verify the correct procedure with the 'Release Notes' for the software version you are installing!
- Software installs are performed by running the K-Frame Installer from the USB or a downloaded copy of the Installer
- If upgrading software verify 3<sup>rd</sup> Party Software is installed
- These 3<sup>rd</sup> Party items are supplied with the K-Frame software
  - Windows XP requires .Net 4.0
  - Windows 7 or 8 requires .Net 4.5
  - KSP (Windows 7) also requires Visual Studio 2010
- Backup all files first and save any images in the Image Store RAM
- Install the software to the Frame and all Panels and Menus
- Clear NV Ram
- Reload files

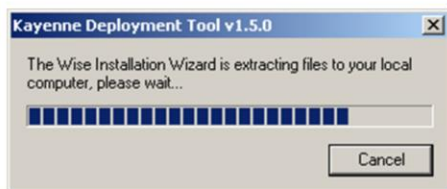


## Software Updates

- Some Kayenne/Karrera files may need to be modified if upgrading from a 1.5 G frame to a 3G K-Frame
  - Most E-MEM and DPM effects should work correctly
- Files that are not compatible are:
  - Acquire Resources files are not compatible
  - Modular I/O (Set Def/Match Def) is not compatible
  - Operating mode (Video format)
  - ClipStore Configuration
  - Image Store (6 V or V/K channels - 10 V/K channels)
- U1 and U2 become C and D busses

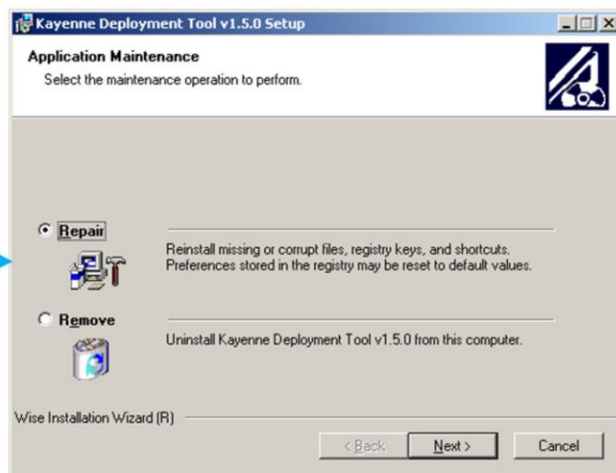


## Software Installer - Deployment Tool (1)



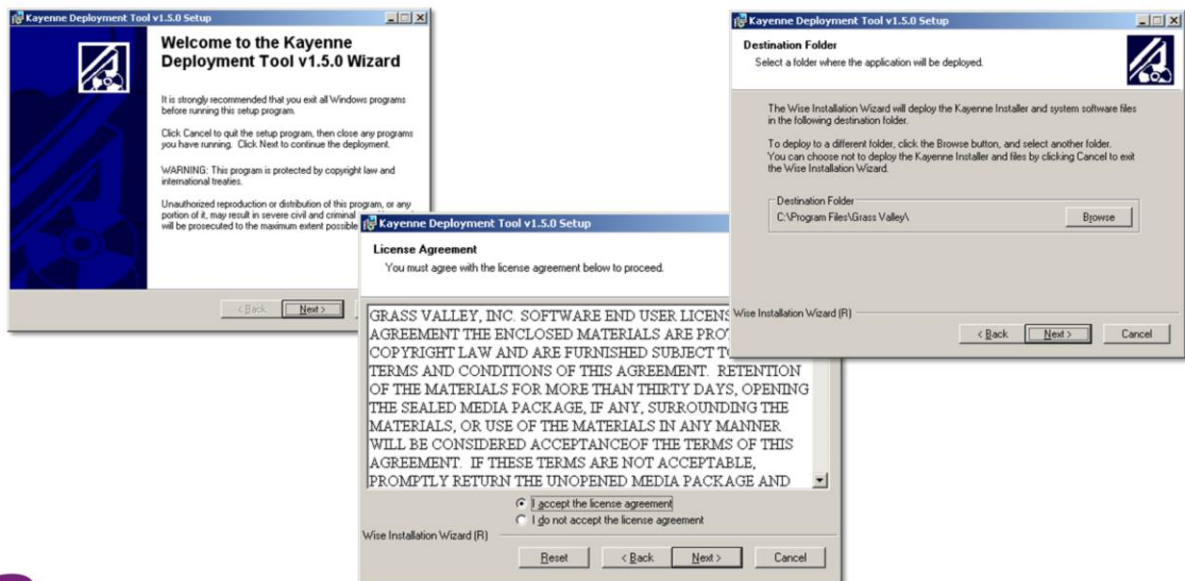
During an Upgrade, this Window may appear

Choose Repair to reinstall all or parts of the existing software version

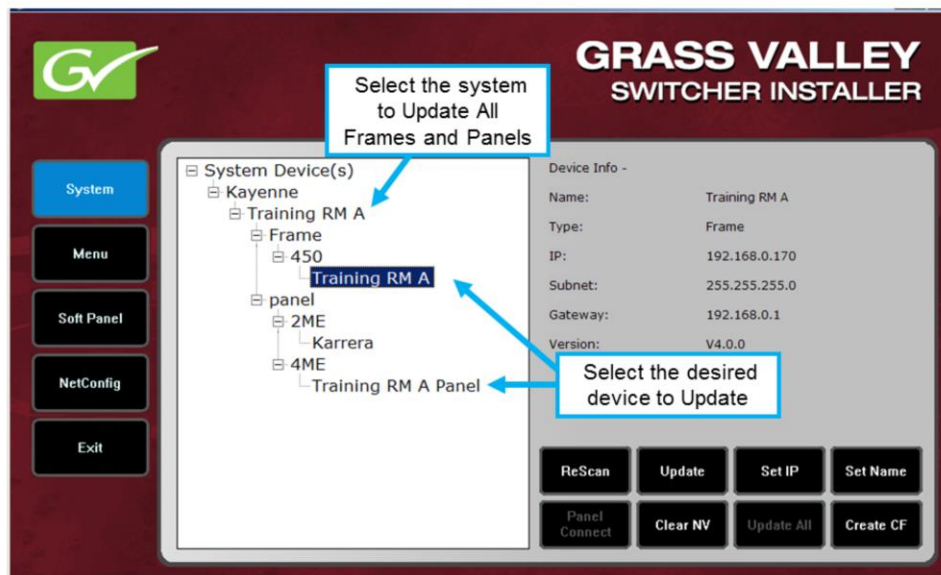




## Software Installer - Deployment Tool (2)



## Kayenne Installer - Software Update (1)

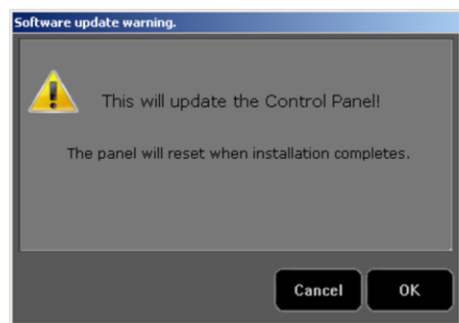
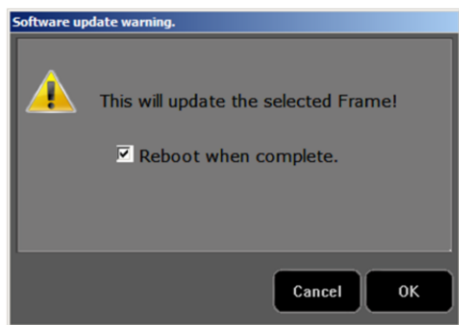


grass valley  
A BELDEN BRAND

8 - 10

- Individual devices or the entire system can be updated.
- Each menu will need to be updated separately.

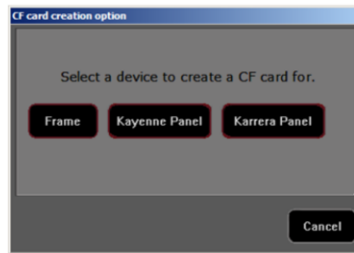
## Kayenne Installer - Update Frame & Panel (PCU)



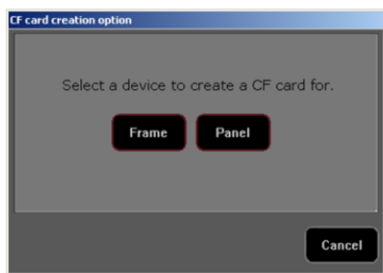
## Creating Compact Flash Images



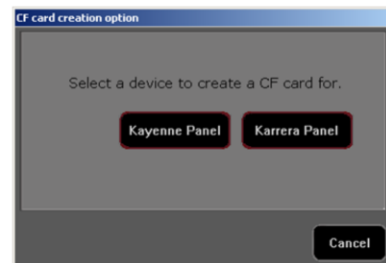
### Version 4.0 & Newer



### Pre - Version 4.0



### K-Frame



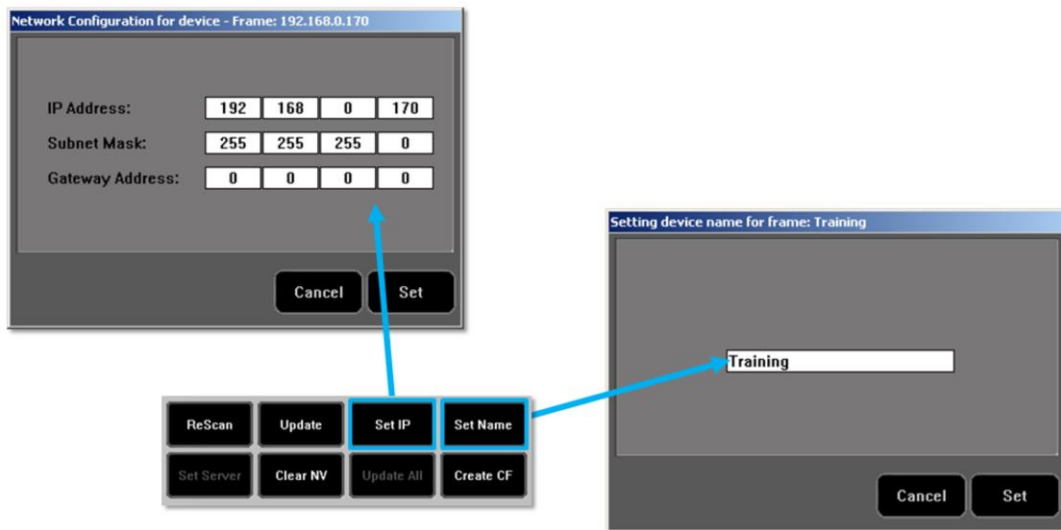
8 - 12

Pre Version 4.0 was Kayenne Only.

Version 4 introduced Karrera.

In the K-Frame there is no CF card in the frame.

## Kayenne Installer - Software Update Tools



8 - 13

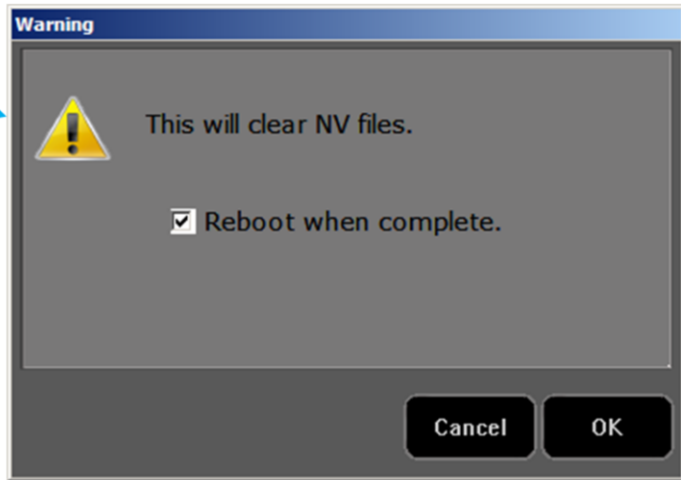
- Changing the frame IP address will cause the frame to reset.

## Kayenne Installer - Clear NV RAM



Clearing NV RAM will clear all Effects and Configuration files from the Frame, except for the Node List

Back up all files before pressing OK  
There is no Undo



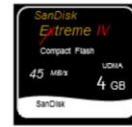
8 - 14

- Clearing NV RAM will delete all Effects and configuration files in the system. Ensure you have all files backed up before clearing NV RAM.
- The only NV file not cleared is the system device Node list.
- Pressing OK will start the operation. There are no additional warnings.

## Creating Compact Flash Images (2)

- Compact Flash Card Issues:

- Use only Approved CF Cards
- Use a USB 2 Reader/Writer
- 4 GB CF cards are no longer supported
- 16GB CF cards take about 50 min to create
- Save Frame NV Folders
- Freshly Imaged CF Cards will:
  - Have partitions and SWUP.exe
  - Need Software to be loaded
  - Need new or saved Nodes list
  - Need new or saved Configs

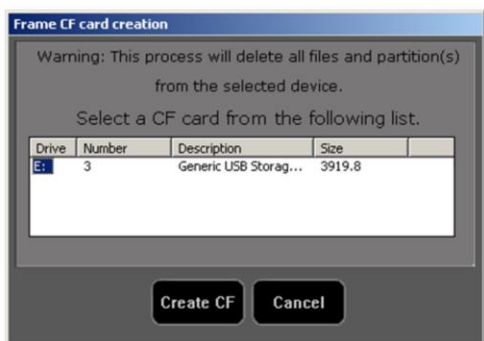


4 GB San Disk Extreme IV  
CF cards are no longer  
supported



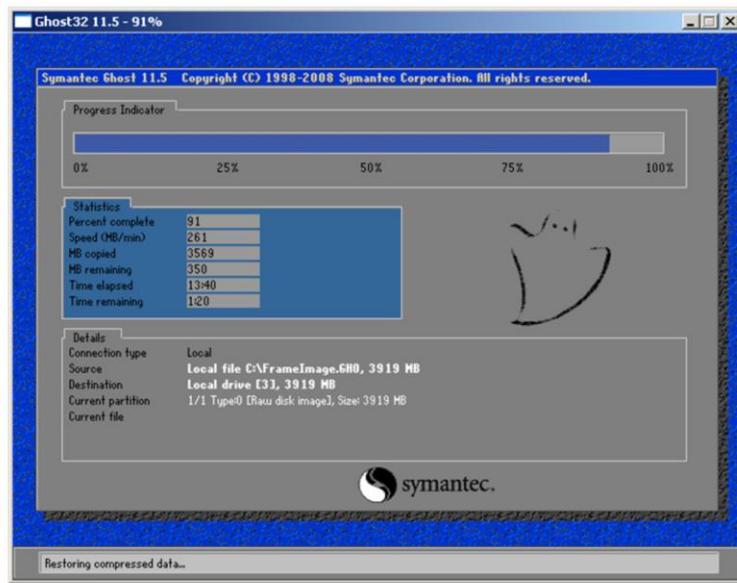
Use only 16 GB Lexar  
professional CF cards

## Creating Compact Flash Images (3)





## Creating Compact Flash Images (4)



8 - 17

- This process will take about 20 minutes with the 4Gb Compact Flash card and about 45 minutes with the 16 Gb CF card.
  - Do not terminate the process when it reaches 100%. Wait for it to finish and close.
- 
- 
- 
- 
- 
- 
- 
- 
- 
-

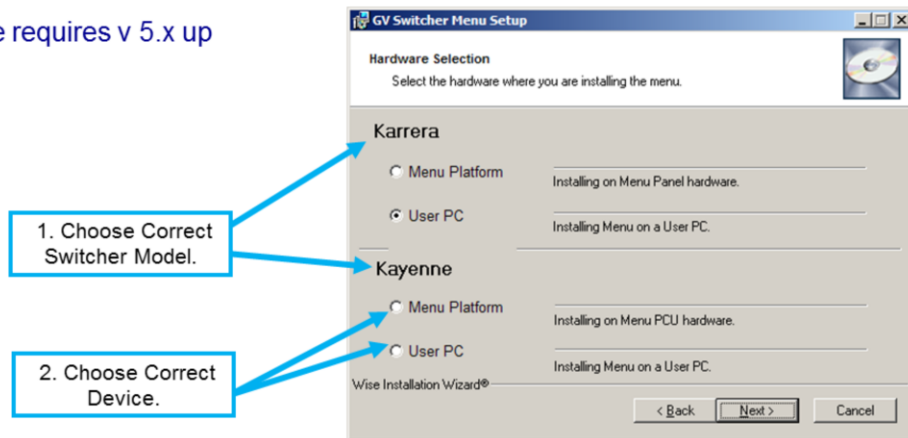
## Karrera - Kayenne Installer - Menu Application (1)



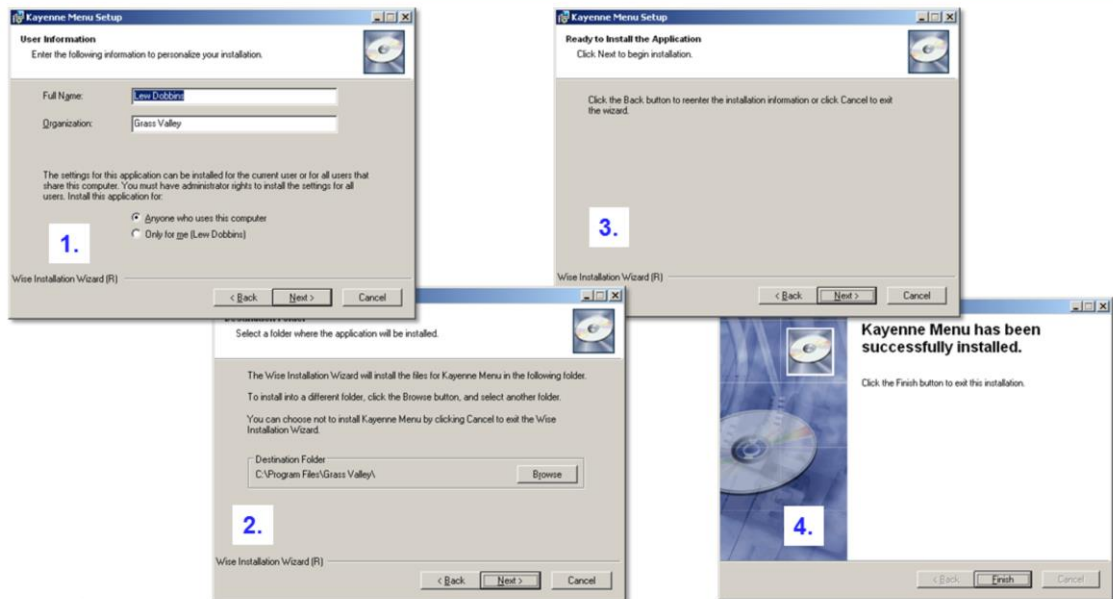
8 - 18

## Karrera - Kayenne Installer - Menu Application (2)

- There is no separate installer for K-Frame software
- Karrera requires v 4.x up
- K-Frame requires v 5.x up



## Karrera - Kayenne Installer - Menu Application (3)



8 - 20

## Karrera - Kayenne Installer - Menu Application (4)

Node Name	Control Surface	Node Type	IP Address	Version	Date
Training RM A		Video Proc Frame	192.168.0.170	V4.0.0	Dec 23 2011
ImageStore		Image Store	192.168.0.171	V4.0.0	Dec 23 2011
KARRERA MENU	1 A	Menu Panel	192.168.0.181	V4.0.0	Dec 23 2011
Lew's PC	1 A	Menu Panel	192.168.0.55	V4.0.0	Dec 23 2011
Training Room A PC	1 A	Menu Panel	192.168.0.51	V4.0.0	Dec 23 2011
Karrera 2 M/E Panel	2 B	RT Panel	192.168.0.177	V4.0.0	Jan 11 2012
Kayenne 4.5 M/E Panel	1 A	RT Panel	192.168.0.173	V4.0.0	Jan 10 2012
Kayenne 2.5 M/E Panel	2 A	RT Panel	192.168.0.178	V4.0.0	Jan 10 2012
Kayenne 2.5 M/E Menu	2 A	Menu Panel	192.168.0.176	V4.0.0	Dec 23 2011
Kayenne 4.5 M/E Menu	1 A	Menu Panel	192.168.0.175	V4.0.0	Dec 23 2011

Verify All updated  
Devices!