

### Implementing special re-entry inputs for UMDs

Re-entry inputs with respect to UMDs can be declared in order to stop a UMD trace through certain special re-entry inputs of a broadcast signal system.

This allows the name of the re-entered input to appear as an originating source in a UMD, rather than being ignored in favor of a more-upstream signal source that is feeding that input.

Two steps are required:

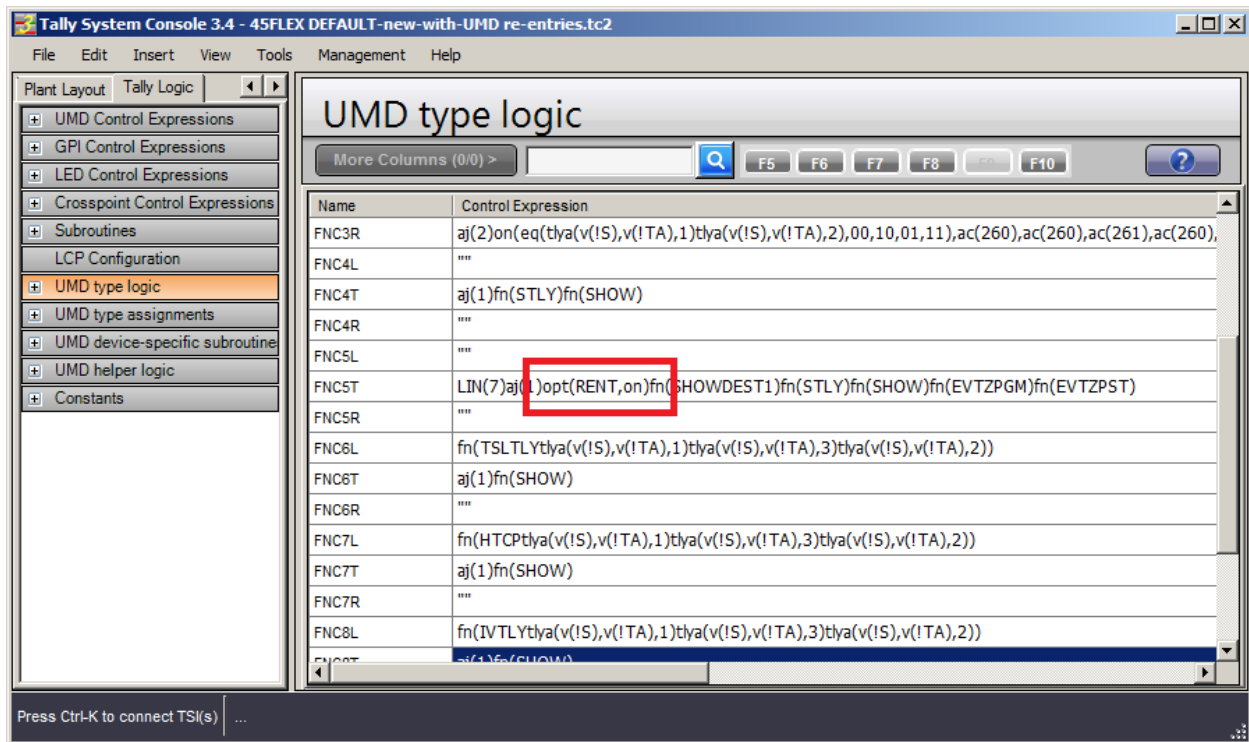
1. Turn on an option so that UMD trace logic recognizes the concept of reentry inputs.
2. Declare which signal inputs are considered to be the “re-entries” at which signal traces must be halted within a UMD.

## Turning on the UMD re-entry logic

Near the beginning of the UMD control expression insert the following function:

`opt(RENT,on)`

EXAMPLE:



The option expression could also be added in the monitoring styles:

Tally System Console 3.5 - \*RNC 2020 with routed MV AND kmv.tc2

File Edit Insert View Tools Management Help

UMDs GPI & Interface Devs

UMD Control Expressions

More Columns (1/1) >

Style Name	Control Expression
>> 1-1-5	<%DT> Device type name as defined in StatusDevices.dev file in Tally System Console 2 installation folder
Source	sv(!TA,<%TA>)sv(!TT1,<%TA.PGM>)sv(!TT2,<%TA.PST>)sv(IS,<P1>)sv(IDT,<%DT>)sv(IFMT,FMTA)fn(<%DT>SRC)
Source Long	sv(!TA,<%TA>)sv(!TT1,<%TA.PGM>)sv(!TT2,<%TA.PST>)sv(IS,<P1>)sv(IDT,<%DT>)sv(IFMT,FMTL)fn(<%DT>SRC)
Source Short	sv(!TA,<%TA>)sv(!TT1,<%TA.PGM>)sv(!TT2,<%TA.PST>)sv(IS,<P1>)sv(IDT,<%DT>)sv(IFMT,FMTS)fn(<%DT>SRC)
Destination	sv(!TA,<%TA>)sv(!TT1,<%TA.PGM>)sv(!TT2,<%TA.PST>)sv(ID,<P1>)sv(IDT,<%DT>)sv(IS,src(v(ID)))sv(IFMT,FMTA)fn(<%DT>SRC)
Destination Long	sv(!TA,<%TA>)sv(!TT1,<%TA.PGM>)sv(!TT2,<%TA.PST>)sv(ID,<P1>)sv(IDT,<%DT>)sv(IS,src(v(ID)))sv(IFMT,FMTL)fn(<%DT>SRC)
Destination Short	sv(!TA,<%TA>)sv(!TT1,<%TA.PGM>)sv(!TT2,<%TA.PST>)sv(ID,<P1>)sv(IDT,<%DT>)sv(IS,src(v(ID)))sv(IFMT,FMTS)fn(<%DT>SRC)
Dest.Source	sv(!TA,<%TA>)sv(!TT1,<%TA.PGM>)sv(!TT2,<%TA.PST>)sv(ID,<P1>)sv(IDT,<%DT>)sv(IFMT,FMTA)opt(REN, on)fn(<%DT>D:S)
Dest.Source Long	sv(!TA,<%TA>)sv(!TT1,<%TA.PGM>)sv(!TT2,<%TA.PST>)sv(ID,<P1>)sv(IDT,<%DT>)sv(IFMT,FMTL)fn(<%DT>D:S)
Dest.Source Short	sv(!TA,<%TA>)sv(!TT1,<%TA.PGM>)sv(!TT2,<%TA.PST>)sv(ID,<P1>)sv(IDT,<%DT>)sv(IFMT,FMTS)fn(<%DT>D:S)
Multiple Routed Inputs	sv(!TA,<%TA>)sv(!TT1,<%TA.PGM>)sv(!TT2,<%TA.PST>)sv(!TT3,<%TA.PGM2>)sv(IS,<P1>)sv(IS2,<P2>)sv(IS3,<P3>)sv(IS4,<P4>)
Routed Input	sv(!TA,<%TA>)sv(!TT1,<%TA.PGM>)sv(!TT2,<%TA.PST>)sv(IS,<P1>)sv(IDT,<%DT>)sv(ID,od(v(IS)))sv(IFMT,FMTS)fn(<%DT>RIP)
Routed Input Long	sv(!TA,<%TA>)sv(!TT1,<%TA.PGM>)sv(!TT2,<%TA.PST>)sv(IS,<P1>)sv(IDT,<%DT>)sv(ID,od(v(IS)))sv(IFMT,FMTL)fn(<%DT>RIP)
Routed Input Short	sv(!TA,<%TA>)sv(!TT1,<%TA.PGM>)sv(!TT2,<%TA.PST>)sv(IS,<P1>)sv(IDT,<%DT>)sv(ID,od(v(IS)))sv(IFMT,FMTS)fn(<%DT>RIP)
Dest.Routed Input	sv(!TA,<%TA>)sv(!TT1,<%TA.PGM>)sv(!TT2,<%TA.PST>)sv(IS,<P1>)sv(IDT,<%DT>)sv(ID,od(v(IS)))sv(IFMT,FMTS)fn(<%DT>RIL)
Dest.Routed Input Long	sv(!TA,<%TA>)sv(!TT1,<%TA.PGM>)sv(!TT2,<%TA.PST>)sv(IS,<P1>)sv(IDT,<%DT>)sv(ID,od(v(IS)))sv(IFMT,FMTL)fn(<%DT>RIL)
Dest.Routed Input Sh...	sv(!TA,<%TA>)sv(!TT1,<%TA.PGM>)sv(!TT2,<%TA.PST>)sv(IS,<P1>)sv(IDT,<%DT>)sv(ID,od(v(IS)))sv(IFMT,FMTS)fn(<%DT>RIL)
Routed Multiviewer	sv(!TA,<%TA>)sv(!TT1,<%TA.PGM>)sv(!TT2,<%TA.PST>)sv(ID,<P1>)sv(IS,xpt(v(ID)))sv(IFMT,FMTA)sv(ID,id())sv(IFXN,UMFV(IID

No connection to TSI System(s) ...

## Declaring Re-entry Inputs

Tally System Console 3.4 - 45FLEX DEFAULT-new-with-UMD re-entries.tc2

File Edit Insert View Tools Management Help

GPIs I/O and Signals Plant

Signal Paths  
Source Definitions  
Input Definitions  
Destination Definitions  
EXT - Input Names  
EXT - Output Names  
LOOP H - Input Names  
LOOP H - Output Names  
LOOP V - Input Names  
LOOP V - Output Names  
**RTR Level V - Input Names**  
Named Inputs  
RTR Level V - Output Names  
SWR - Input Names  
SWR - Output Names  
VSWR - Input Names  
VSWR - Output Names

### Resource Input - RTR Level V

More Columns (1/1) >

Name	Short Name	Long Name	Style A	Style B	Input Type	Redirect	Priority
055			Long	Style A	Re-entry	None	
056			Long	Style A	Re-entry	None	
057			Long	Style A	Re-entry	None	
105			Long	Style A	Re-entry	None	
106			Long	Style A	Re-entry	None	
107			Long	Style A	Re-entry	None	
108			Long	Style A	Re-entry	None	
109			Long	Style A	Re-entry	None	
110			Long	Style A	Re-entry	None	
467			Long	Style A	Re-entry	None	
468			Long	Style A	Re-entry	None	
469			Long	Style A	Re-entry	None	

Press Ctrl-K to connect TS(s) ...