

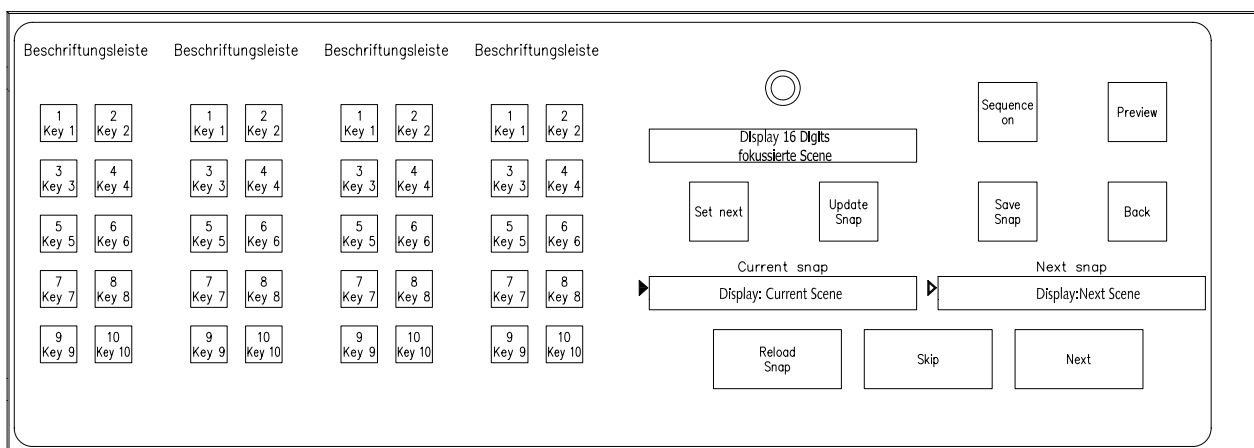
**Data Sheet**
**Rev. 2005-11-16**
**Userpanel 8**

Userpanel Sequenceautomation

**960/83**

- Note**

This datasheet contains particulars about indicators, power consumption, dimensions and weight.

**Panel Front View**

**Copyright/Disclaimer**

All rights reserved. Permission to reprint or electronically reproduce any document or graphic in whole or in part for any reason is expressly prohibited, unless prior written consent is obtained from the Lawo AG.

All trademarks and registered trademarks belong to their respective owners. It cannot be guaranteed that all product names, products, trademarks, requisitions, regulations, guidelines, specifications and norms are free from trade mark rights of third parties.

All entries in this document have been thoroughly checked, however no guarantee for correctness can be given. Lawo AG cannot be held responsible for any misleading or incorrect information provided throughout this manual.

Lawo AG reserves the right to change specifications at any time without notice

© Lawo AG, November 2005

## Related Products

Product	Description	Name
Control System	Controls Consol Surface	960/01
PSU	Power Supply for Consol Surface	960/04

## General

Parameter	Conditions	Min.	Typ.	Max.	Unit
<b>Cooling requirement</b>					
Power dissipation	12V		13.2		W
<b>Mechanical data</b>					
Height			120		mm
Width			342		mm
Depth	incl. knobs		70		mm
Weight			1190		g

## Power Supply

Parameter	Conditions	Min.	Typ.	Max.	Unit
Operating supply voltage	DC	10.8	12	13.2	V
Nominal supply current	12V		1100		mA
Nominal power consumption	12V		13.2		W

## Indicators

Indicator	Function	Status	Condition
<b>Left Side</b>			
H1	LCA	static red / Off	LCA not booted / normal operation
H2	LCA	green	not used
H3	LCA	yellow	not used
H4	USB Controller	red	not used
H5	USB Controller	yellow blinking	Data transmission USB
H6	USB Controller	green blinking	normal operation
H7	USB HUB	yellow	intern port not used
H8	USB HUB	static green	intern port Connection established, normal operation
H9	USB HUB	yellow	extern port not used
H10	USB HUB	static green	extern port Connection established, normal operation
H11	USB HUB	yellow	extern port not used
H12	USB HUB	static green	extern port Connection established, normal operation
<b>Right Side</b>			
H1	LCA	static red / Off	LCA not booted / normal operation
H2	LCA	green	not used
H3	LCA	yellow	not used
H4	USB Controller	red	not used
H5	USB Controller	yellow blinking	Data transmission USB
H6	USB Controller	green blinking	normal operation
H7	USB HUB	yellow	intern port not used
H8	USB HUB	static green	intern port Connection established, normal operation
H9	USB HUB	yellow	extern port not used
H10	USB HUB	static green	extern port Connection established, normal operation
H11	USB HUB	yellow	extern port not used
H12	USB HUB	static green	extern port Connection established, normal operation

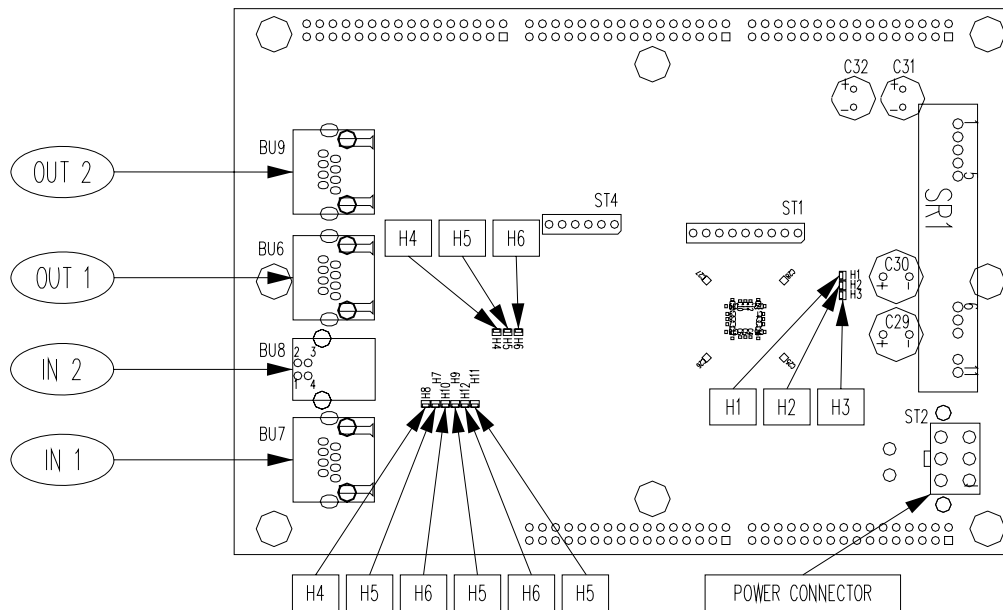
## Further particulars/explanatory notes

- Power Consumption**

All particulars are typical and can increase in worst case.

## Panel Back View

- Left Side**



- Right Side**

