

Technical Documentation

Exchange of OLED /

Central Panel 958/20

Product series: mc² 56 MKII

Version: 1.0

Copyright

All rights reserved. Permission to reprint or electronically reproduce any document or graphic in whole or in part for any reason is expressly prohibited, unless prior written consent is obtained from the Lawo AG.

All trademarks and registered trademarks belong to their respective owners. It cannot be guaranteed that all product names, products, trademarks, requisitions, regulations, guidelines, specifications and norms are free from trade mark rights of third parties.

All entries in this document have been thoroughly checked, however no guarantee for correctness can be given. Lawo AG cannot be held responsible for any misleading or incorrect information provided throughout this manual.

Lawo AG reserves the right to change specifications at any time without notice

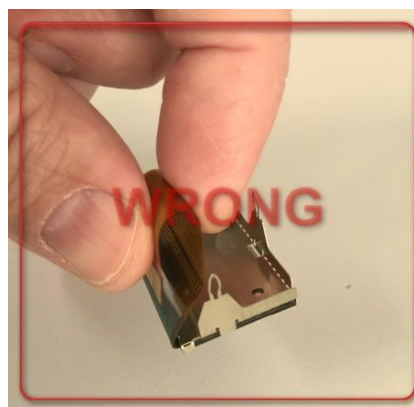
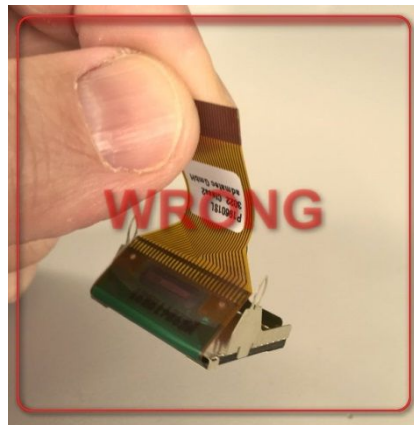
© Lawo AG, May 2016

1	Introduction	3
1.1	What to do?.....	3
1.2	What do you need?.....	4
2	How to to disassemble the panel	6
3	How to remove the OLED bar	12
4	How to mount the new OLED bar	13
5	Assembling the panel	14

1 Introduction

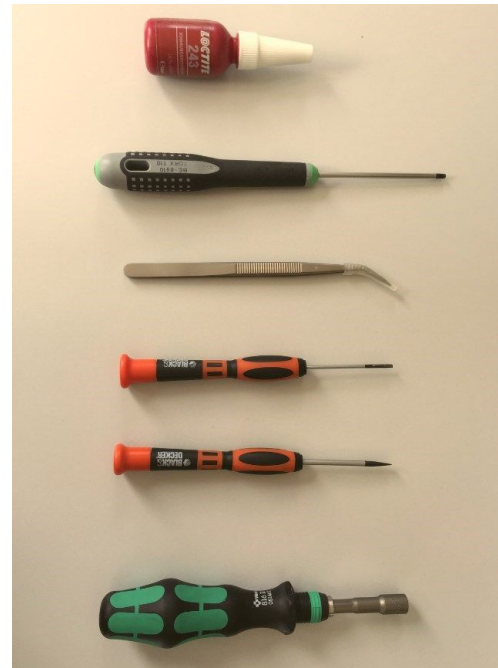
1.1 What to do?

- Exchange of OLEDs into new ones



1.2 What do you need?

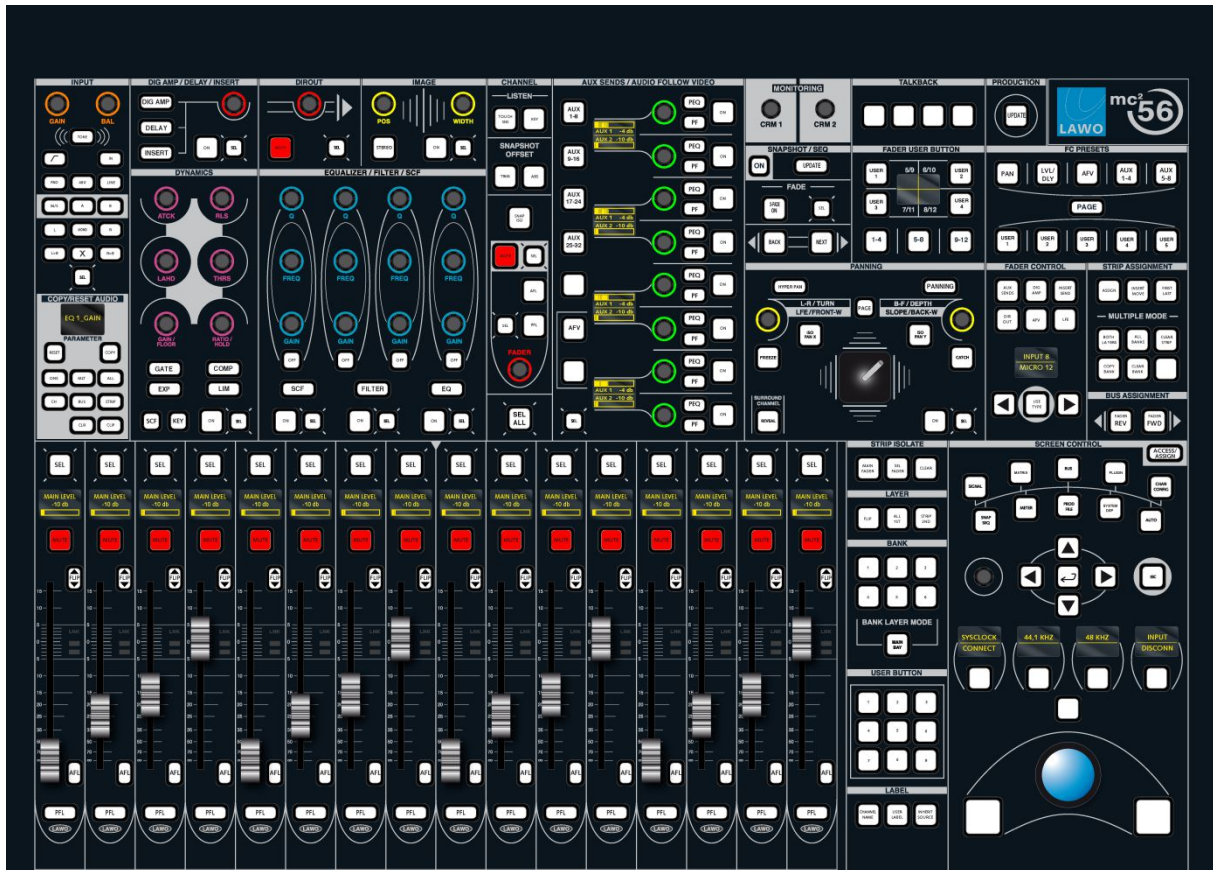
- Loctite
- Torx T10
- tweezes
- standard screwdrivers
- screw-wrench 5,5 (3mm)



- **Single OLED incl. holder**
295B8101-000

(max.27 pcs.)



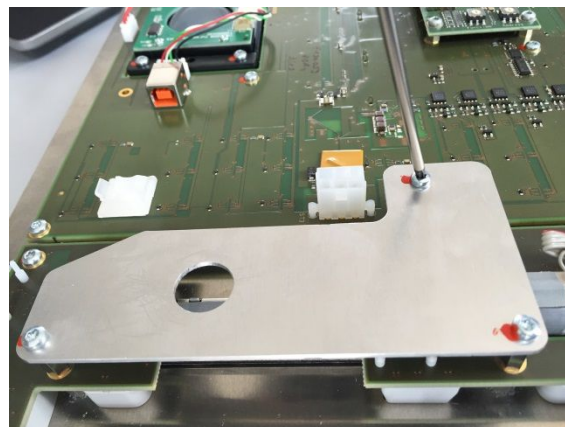


2 How to disassemble the panel:

Remove the caps of the knobs and the fader caps:

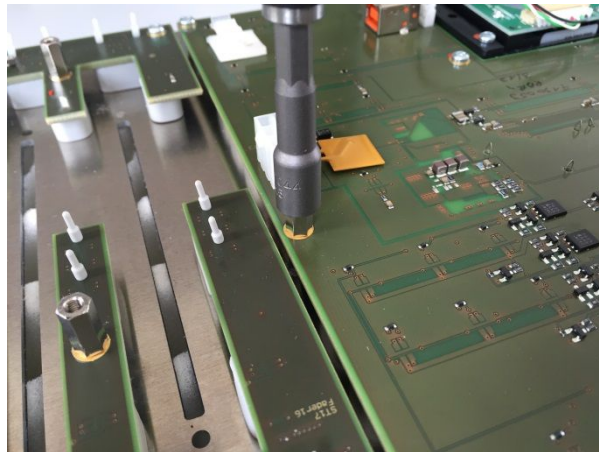


Turn the panel and remove the service plate:

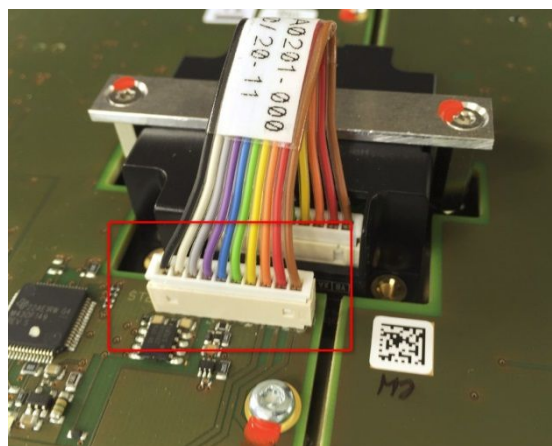


2 How to disassemble the panel:

Remove the distance nuts:

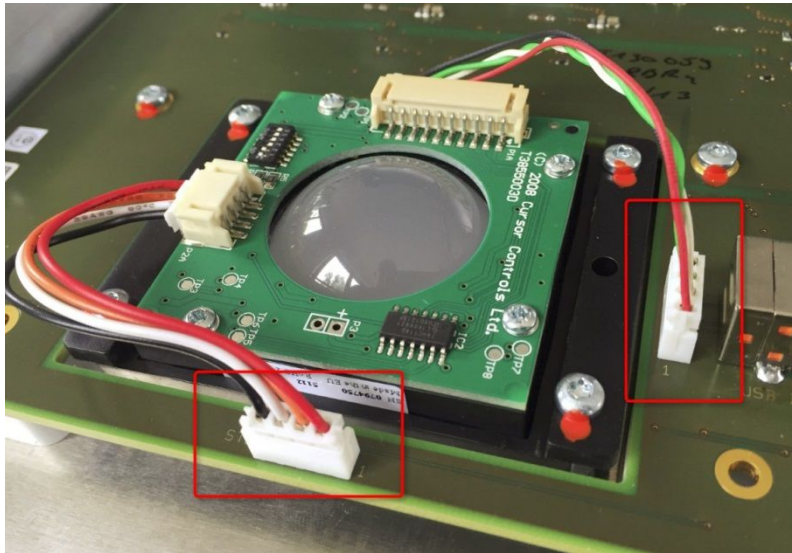


Remove the joystick cable:

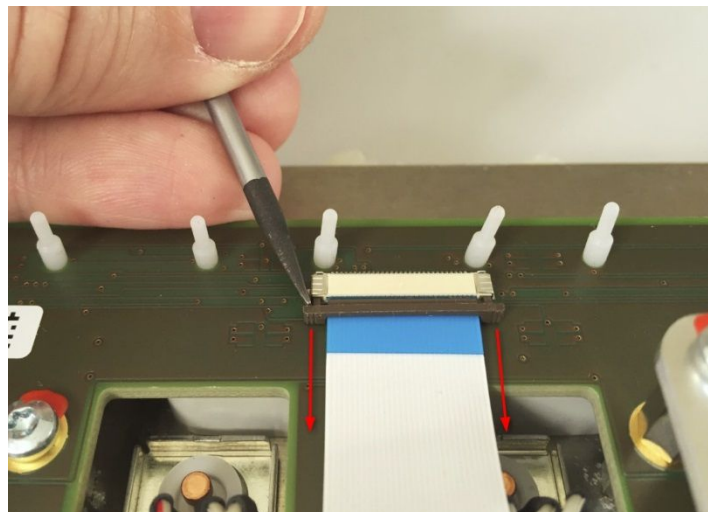


2 How to disassemble the panel:

Remove the trackball cables:

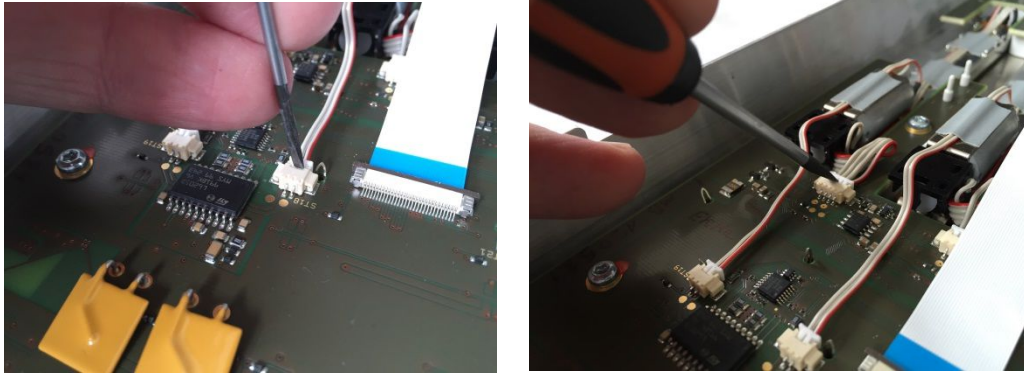


Turn the panel, open the locks and remove the flat foils between the PCBs:



2 How to disassemble the panel:

Remove all fader cables:

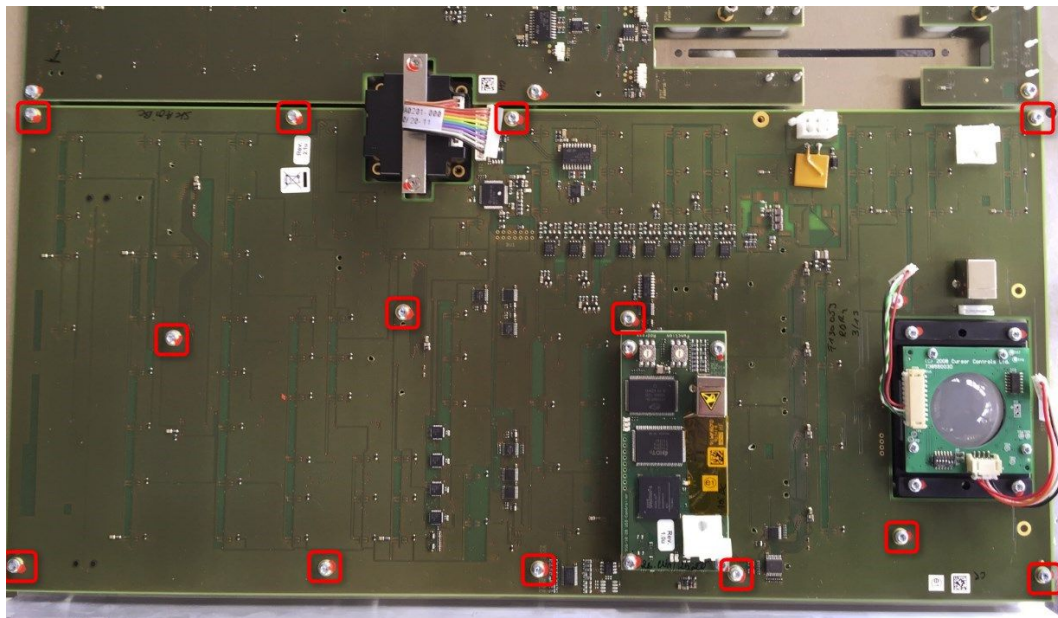
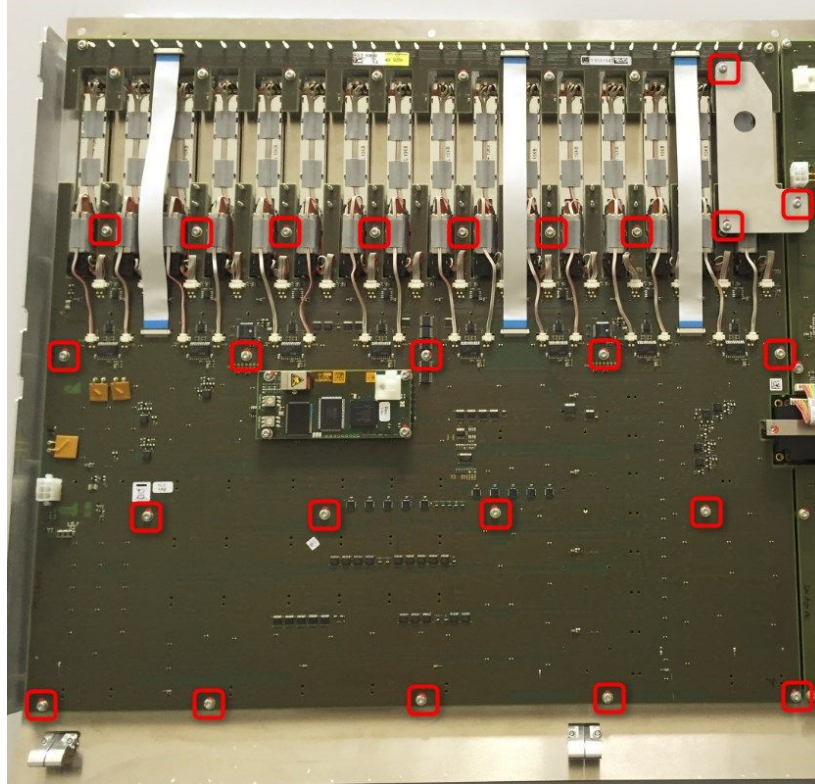


Turn the panel and open all T10 fader screws and remove all fader:



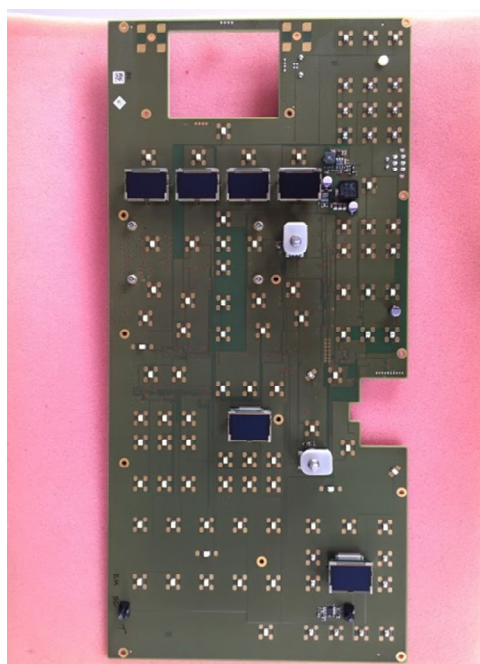
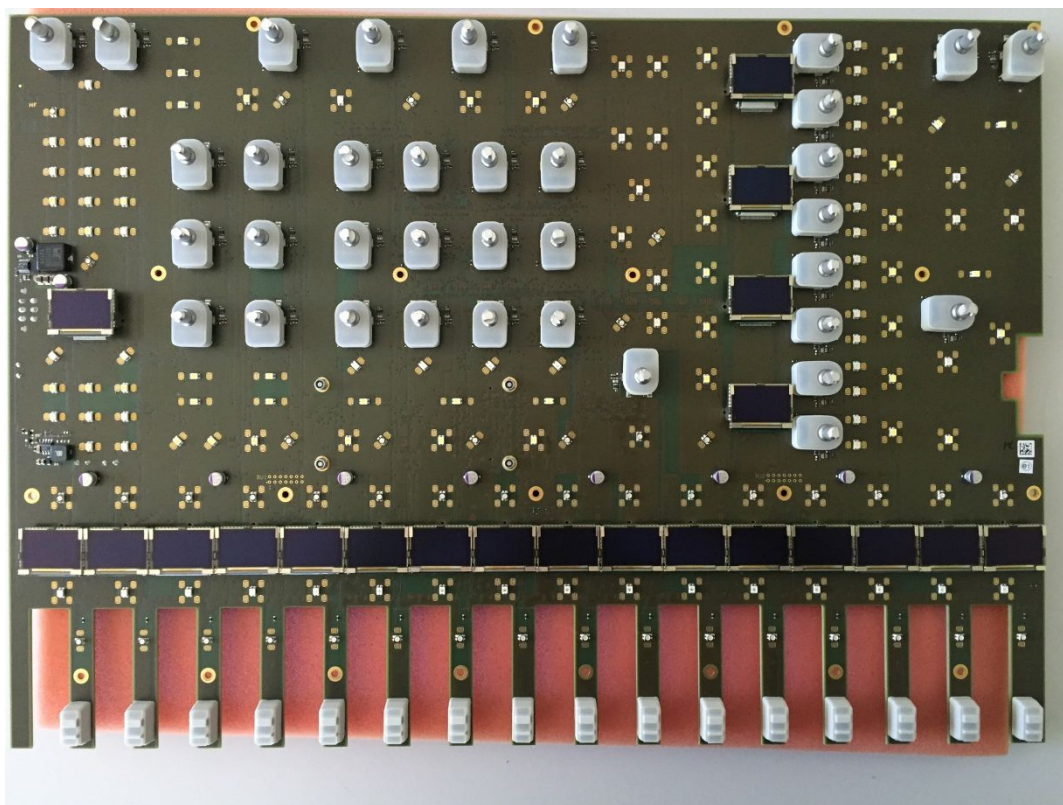
2 How to disassemble the panel:

Turn the panel and open the screws of the panel:



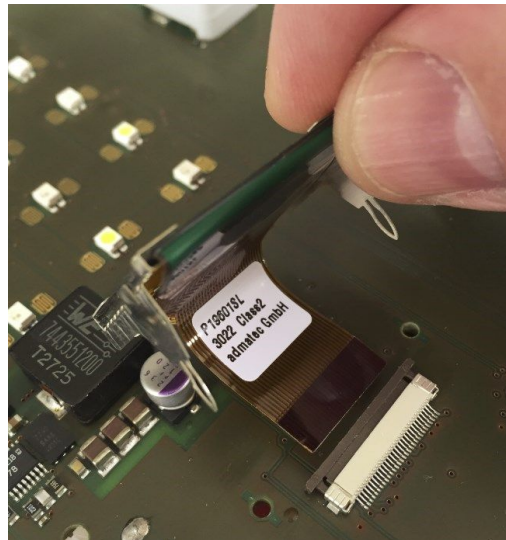
2 How to disassemble the panel:

Remove the central PCB and the Screen Control PCB from the front plate:

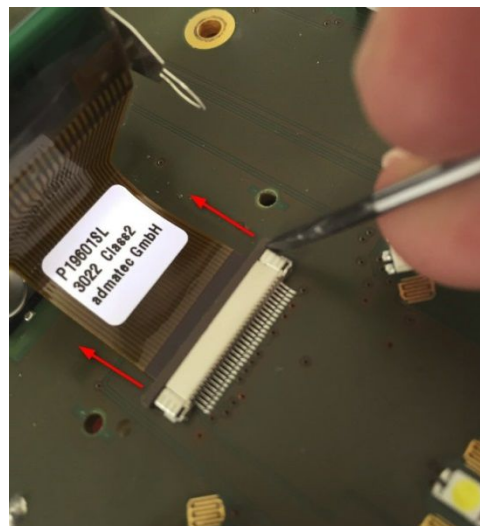


3 How to remove the OLEDs:

Pull out the clips of the OLED holder:

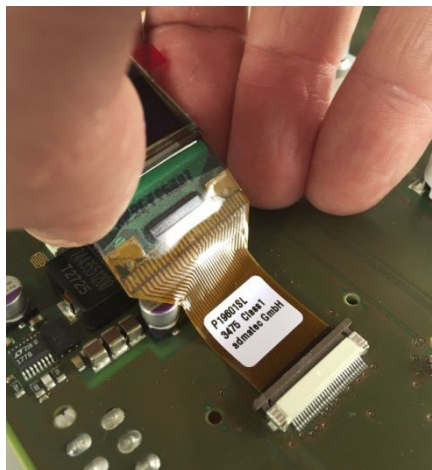


Open the locks and remove the flat foil + OLED:

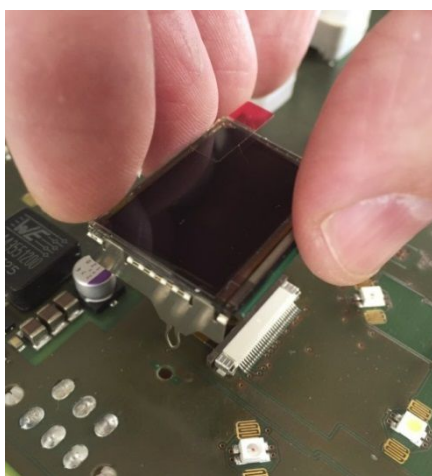


4 How to mount the new OLED:

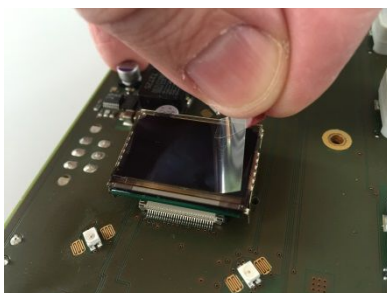
Keep the flat foil straight and insert the flat foil into its socket and close the lock carefully:



Bring the OLED into its final position while the flat foil will be bent very slowly and clip the holder in its position:



Remove the security plastic film from every single OLED



5 Assembling the panel:

For assembling please refer to page 6 - 11 in reversed order.

Please do not forget to save all PCB – screws with Loctite.

ATTENTION!

Before pressing the fader knobs onto the rail, bring the fader to the far top or far bottom position.
Do not mount the knobs while fader is in middle position, the pressure might damage the fader.

