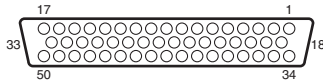


6. External interfaces

6-2-4. TALLY/GPI

This connector is provided with eight contact input ports (GPI In) for controlling the unit from an external device, 31 ports (GPI Out) for outputting the tally and status information from the unit to the external device, and one port (ALARM Out) that is used exclusively as the alarm output. For details of the settings, refer to “5-7-3. Setting the GPI”.

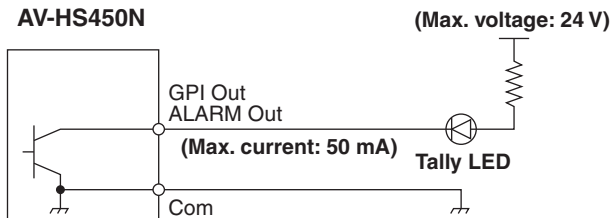


Example of GPI Out and ALARM connections

Ensure that the conditions given below are satisfied.

Dielectric strength: Max. DC 24 V
Current: Max. 50 mA

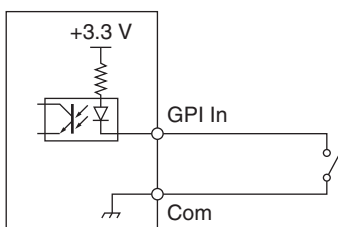
AV-HS450N



Example of GPI In connections

Provide contact inputs.

AV-HS450N



D-sub 50-pin, female, inch screw

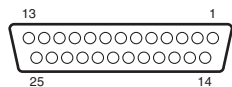
Pin No.	Signal name	
1	GPI In Com	IN
34	GPI In Com	
18	GPI In 1	
2	GPI In 2	
35	GPI In 3	
19	GPI In 4	
3	GPI In 5	
36	GPI In 6	
20	GPI In 7	A
4	GPI In 8	
37	GPI Out Com	
21	GPI Out 1	
5	GPI Out 2	B
38	GPI Out 3	
22	GPI Out 4	
6	GPI Out Com	
39	GPI Out 5	C
23	GPI Out 6	
7	GPI Out 7	
40	GPI Out 8	
24	GPI Out Com	D
8	GPI Out 9	
41	GPI Out 10	
25	GPI Out 11	
9	GPI Out 12	E
42	GPI Out Com	
26	GPI Out 13	
10	GPI Out 14	
43	GPI Out 15	F
27	GPI Out 16	
11	GPI Out Com	
44	GPI Out 17	
28	GPI Out 18	G
12	GPI Out 19	
45	GPI Out 20	
29	GPI Out Com	
13	GPI Out 21	H
46	GPI Out 22	
30	GPI Out 23	
14	GPI Out 24	
47	GPI Out Com	
31	GPI Out 25	
15	GPI Out 26	
48	GPI Out 27	
32	GPI Out 28	
16	GPI Out Com	
49	GPI Out 29	
33	GPI Out 30	
17	GPI Out 31	
50	ALARM Out	

6. External interfaces

6-3. Control panel

6-3-1. TALLY/GPI

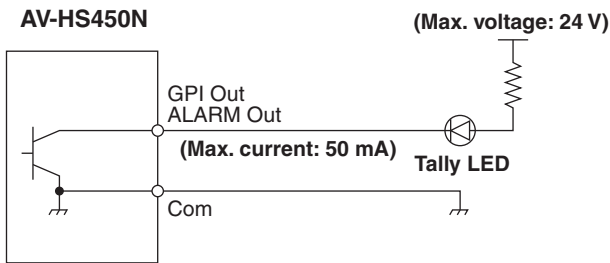
This connector is provided with eight contact input ports (GPI In) for controlling the unit from an external device, 8 ports (GPI Out) for outputting the tally and status information from the unit to the external device, and one port (ALARM Out) that is used exclusively as the alarm output. For details of the settings, refer to “5-7-3. Setting the GPI”.



Example of GPI Out and ALARM connections

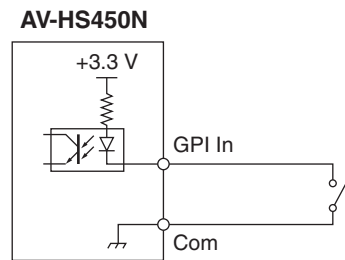
Ensure that the conditions given below are satisfied.

Dielectric strength: Max. DC 24 V
Current: Max. 50 mA



Example of GPI In connections

Provide contact inputs.



D-sub 25-pin, female, inch screw

Pin No.	Signal name	
1	GPI In Com	IN
14	GPI In Com	
2	GPI In 1	
15	GPI In 2	
3	GPI In 3	
16	GPI In 4	
4	GPI In 5	
17	GPI In 6	
5	GPI In 7	A
18	GPI In 8	
6	GPI Out Com	
19	GPI Out 1	
7	GPI Out 2	
20	GPI Out 3	
8	GPI Out 4	
21	GPI Out Com	B
9	GPI Out 5	
22	GPI Out 6	
10	GPI Out 7	
23	GPI Out 8	
11	DC 5 V	
24	DC 5 V	
12	NC	
25	ALARM Com	
13	ALARM Out	