
Win3500Plus Control System



v3.1

PESA Switching Systems, Inc.
330-A Wynn Drive Northwest
Huntsville, AL 35805-1961
<http://www.pesa.com>
(256) 726-9200

Service and Ordering Assistance

PESA Switching Systems, Inc.
330-A Wynn Drive Northwest
Huntsville, AL 35805-1961 USA
www.pesa.com

Main Office

(256) 726-9200 (Voice)
(256) 726-9271 (Fax)

Service Department

(256) 726-9222 (Voice) **(24 hours/day, 7 days/week)**
(256) 726-9268 (Fax)
service@pesa.com

National Sales Office

PESA Switching Systems, Inc.
35 Pinelawn Rd., Suite 99-E
Melville, NY 11747 USA
(800) 328-1008 (Voice)
(631) 845-5020 (Voice)
(631) 845-5023 (Fax)

© 2001 PESA Switching Systems, Inc. All Rights Reserved.

2400E, 3300, 3500, 3500 Excelsior!, 3500Plus, 6600E, 6600EX, ADA 3001, ADA 3002, Alliance, Bobcat, Cheetah, Cougar, Cougar HD, CP5, CP5H, CP5-40X, CP-HOR, CPU Link, DA 3000, e-Route, Jaguar, LNS-8, Lynx, Lynx Plus, Lynx SD, Lynx WB, Lynx 200, MVDA 2416, Ocelot, PCI-5000, PESA, PVC-3000, PVC-5000, RC5000, RC5500, RCP-241, RCP-2416, RCP-242, RCP-248, RCP-48X, RCP-64X, RCP-128X, RCP-CSD, RCP-DLCXY, RCP-GPIO, RCP-LCXY, RCP-MB, RCP-MB2, RCP-MLDT, RCP-MLDT2, RCP-MLTP2, RCP-MP32, RCP-SLCXY, RCP-STAT1, RCP-STAT2, RCP-TP, RCP-XY, RM4000, RM5000, RM5488A, Route 66, RS422 Port Switcher, SDVDA 3001, System 5, System V, Tiger, Truck Link, VDA 3001, VDA 3002, VDA 3003, VDA 3005, VDA 3006, VDARS422, Virtual Panel, VP, VPNet, Win3300, Win3500, and Win3500Plus are trademarks of PESA Switching Systems, Inc. in the United States and/or other countries.

Microsoft, Windows, and Windows NT are either registered trademarks or trademarks of Microsoft Corporation in the United States and/or other countries.

IBM and AT are registered trademarks of IBM Corporation in the United States and other countries.

No part of this publication may be reproduced, stored in any retrieval system, or transmitted in any form or by any means, including but not limited to electronic, mechanical, photocopying, recording or otherwise, without the prior written permission of PESA Switching Systems, Inc. This includes text, illustrations, tables, and charts.

All information, illustrations, and specifications contained in this publication are based on the latest product information available at the time of publication approval. The right is reserved to make changes at any time without notice.

Contents

Chapter 1 – Introduction	1
General Description	1
Minimum PC Requirements	2
End User Commercial License Agreement.....	2
Grant	2
Limited Warranty	2
Scope of Grant	3
Title	4
Termination	4
Miscellaneous	4
What's New for v3.0.....	4
v3.0 Technical Bulletin Available	4
Indices Deleted	5
Categories Now Optional	5
Using Categories	5
Source/Destination/Reentry Names.....	6
Case Sensitivity	6
Character Display Limitations.....	6
What's New for v3.1.....	7
v3.1 Technical Bulletin Available	7
Operation of Clear Key on Certain RCPs.....	7
Use of Leading Spaces in Categories	7
Addition of Remote Clients as Configuration Item	7
Chapter 2 – Installation	9
Preliminary Settings.....	9
Installation	9
Chapter 3 – General Operation	11
Hardware Setup	11
Software Setup.....	11
Set Initial User Name	11
Establish Serial Port Connection	11
Test Serial Port Connection.....	12
Create User Account.....	12
Create Sample Configuration	12
Software Setup Summary	13
Win3500Plus Data	13
Chapter 4 – File Menu	15
Introduction	15
New Configuration	15
Open Configuration	15

Save Configuration	15
Print Setup	16
Print.....	16
Exit.....	17

Chapter 5 – System Menu 19

Introduction.....	19
Log On to Controller.....	19
Log Off of Controller.....	19
Download Configuration to Controller	19
Upload Configuration from Controller	20
Controller Configuration Name	20
User Account	20
Communications	21
Modem.....	22
Call Remote (Modem)	22
Hang Up.....	23
Configure Remote (Modem).....	23
Set User.....	24

Chapter 6 – Router Menu 25

Introduction.....	25
Router Status.....	25
Take Mode.....	26
Hot Take Mode.....	26
Preset Mode.....	27
Salvos	27
Panel Status.....	27
Online Panel Cfg.....	28
Reentry Status	28
Sync Ref Status	29
Tieline Status	30

Chapter 7 – Configuration Menu 33

Introduction.....	33
Configuration Information	33
Level	34
Deleting Levels.....	35
Component.....	36
Tieline	38
Source	39
Source Names	41
Adding Sources	41
Deleting Sources.....	43
Destination.....	44
Destination Names.....	45
Adding Destinations	46
Deleting Destinations	47
Reentry.....	48
Reentry Names	49
Adding Reentries	50
Deleting Reentries	50
Category.....	51
Category Names	51

Adding Categories	52
Editing Categories	52
Deleting Categories	52
Index	52
Sync Reference	53
Assign Sync References to Destinations	53
Assign Sync References to Levels.....	54
Modify Sync Reference Order.....	54
Salvo	55
Deleting a Salvo	56
Panel	57
Panel Name.....	58
Panel Address	58
Requester Code.....	58
Lock Priority.....	59
Status Level	59
Status Method.....	59
Destination.....	60
Levels of Control List.....	60
Source Include List.....	61
Destination Include List	62
Salvo Include List.....	62
Data Key List.....	62
Salvo Key List	63
Soft Keys	64
View Keys	65
Status Display Panels	65
View Displays	66
CPU Link.....	66
Port Selection	67
Port Name.....	67
Requester Code.....	67
Lock Priority.....	68
Baud Rate	68
Stop Bits	68
Protocol	69
Remote Client	71
Client Name.....	71
Client Password.....	72
Client Level List.....	72
Client Source List.....	72
Client Destination List.....	72
Client Parameters	72

Chapter 8 – Diagnostics Menu 73

Introduction	73
Physical Diagnostics	73
All Call	74
Diagonal	75
Take.....	76
Restore.....	76
Router Physical Mapping.....	76
CPU Link Test	77
Clear Configuration Locks.....	77
Block Check Enable/Disable	78

Switcher Enable/Disable	78
Reset Controller	78
Reset Panel	78
Import/Export Functions	78

Chapter 9 – Troubleshooting 81

Introduction	81
Error Messages	81
Component Offset Warning	81
Configuration Error	81
Configuration Warning	82
Controller Interface Authority	82
CPU Link Message	82
Database Conversion Error	82
Duplicate Output Error	83
Invalid Save Directory	83
Panel Status Level Change Requirement	83
Remote Modem Configuration	83
Sync Ref Status Message	83

Glossary of Terms 85

AES/EBU Audio	85
All Call	85
ANSI	85
Baud	85
Black Burst	86
Block	86
Block Checking	86
Blocked Destination	86
Blocked Source	86
Breakaway Switch	86
Category	87
Chop	87
Chop Rate	87
Component	87
Composite Video	88
Confidence	88
Confidence Error	88
Configuration	88
Configuration Lock	88
Control Panel	89
CPU Link	89
Crosspoint	89
Data Key	89
Data Key List	89
Default Destination	89
Destination	89
Destination Block	90
Destination Group	90
Destination Include List	90
Destination Number	90
Destination Status	90
Diagonal	90
EIA	91

Follow Switch.....	91
House Black.....	91
House Sync.....	91
Index.....	91
Input Offset.....	91
Level.....	93
Level Order.....	93
Levels of Control List.....	93
Local Modem.....	93
Lock.....	93
Lock Priority.....	94
Logical Input.....	94
Logical Output.....	94
Logical Switch.....	94
Matrix Breakup.....	95
Matrix Space.....	95
NTSC.....	96
Output Offset.....	97
PAL.....	98
Panel.....	98
Panel Address.....	98
Panel Name.....	98
Password.....	99
PC.....	99
Physical Input.....	99
Physical Switch.....	99
Physical Output.....	99
Port.....	99
PRC Device.....	100
Protect.....	100
Protect Priority.....	100
Protocol.....	100
Readback.....	100
Readback Error.....	100
Reentry.....	100
Remote Client.....	101
Remote Client Name.....	102
Remote Client Parameters.....	102
Remote Client Password.....	102
Remote Modem.....	102
Requester Code.....	102
RM5 Device.....	102
Salvo.....	102
Salvo Entry.....	103
Salvo Include List.....	103
Salvo Key.....	103
Salvo Key List.....	103
SECAM.....	104
Serial Port.....	104
Shared Input.....	104
SMPTE.....	104
Soft Destination Key.....	104
Soft Key.....	104
Soft Source Key.....	104
Source.....	104
Source Block.....	105

Source Group	105
Source Include List	105
Source Number	105
Status	105
Status Level	105
Status Method	106
Stop Bit	106
Strobe	106
Sync Reference	106
System 5 Device	106
TIA	106
Tieline	106
User Account	108
User Name	108
User Password	108
Vertical Interval	108
Vertical Sync Signal	108
Vertical Trigger	108
Video Timing Field	108
Video Timing Frame	108
Working Directory	108

Index

109

Chapter 1 – Introduction

General Description

The PESA 3500Plus System Controller is a low cost, full-featured microprocessor-based control system designed to interface with various configurations of PESA video and audio routing switchers. The 3500Plus System Controller, working in conjunction with the PESA Win3500Plus Control System software, enables users to configure and operate a routing switcher system from a PC.

Hardware installation and operation information may be found in the PESA 3500Plus System Controller manual.

For a summary of the Win3500Plus Control System general specifications, see Table 1 on page 1.

Max Number of Levels	16	
Max Number of Inputs/Outputs per Level	576	
Max Number of Components	32	
Max Number of Tielines	64	
Max Number of Categories	254	
Max Number of Index Names	No Longer Used	
Max Number of Sources	600	
Max Number of Destinations	600	
Max Number of Rentries	8	
Max Number of Salvos	128 (1024 Entry Lines)	
Lock Priority Range	0-255 ("0" is Highest Priority)	
Max Number of Control Panels	500	
Panel Address Range	1 - 1023	
Panel Requestor Code Range	1 – 65535	
Chop Rate	1 – 255 Frames	
Component Types	RM5 (System 5)	PRC
Offset Range	0 – 255	0 – 4094
Strobe Range	1 – 5	1 – 63
Address Range	1 – 255	1 – 4095

Table 1 General Specifications

Minimum PC Requirements

The minimum PC requirements to run Win3500Plus are:

- Processor: 486DX2-66MHz
- Memory: 8 MB of RAM
- Monitor: 800X600 SVGA
- Serial Port: One serial port available from COM1 through COM4 available for CPU Link use (16550 UART preferred.)
- Hard Disk: 10 MB of available space (5 MB for executable files and 5 MB for configuration data)
- Operating System: Win3500Plus is a 16-bit application which will run under any of these operating systems:
 - Microsoft Windows™ v3.1
 - Microsoft Windows95™
 - Microsoft Windows98™
 - Microsoft Windows NT™
- Local Modem (Optional): If you wish to connect to the 3500Plus System Controller via modem, you will need two modems, a Local Modem and a Remote Modem. See "Modem" on page 22 for more information.

End User Commercial License Agreement

Grant

Subject to purchase of a PESA System Controller, PESA Switching Systems, Inc. (PESA) grants to you a non-exclusive license to use the Software and accompanying documentation ("Documentation") in the manner described below under "Scope of Grant."

Limited Warranty

PESA warrants that for a period of ninety (90) days from the date of acquisition, the Software, if operated as directed, will substantially achieve the functionality described in the Documentation. PESA does not warrant, however, that your use of the Software will be uninterrupted or that the operation of the Software will be error-free or secure. In addition, the security mechanisms implemented by PESA software have inherent limitations, and you must determine that the Software sufficiently meets your requirements. PESA also warrants that the media containing the Software, if provided by PESA, is free from defects in material and workmanship and will so remain for ninety (90) days from the date you acquired the Software. PESA's sole liability for any breach of this warranty shall be, in PESA's sole discretion: (i) to replace your defective media; or (ii) to advise you how to achieve substantially the same functionality with the Software as described in the Documentation through a procedure different from that set forth in the Documentation; or (iii) if the above remedies are impracticable, to refund the purchase price you paid for the System Controller. Repaired, corrected, or replaced

Software and Documentation shall be covered by this limited warranty for the period remaining under the warranty that covered the original Software, or if longer, for thirty (30) days after the date (a) of shipment to you of the repaired or replaced Software, or (b) PESA advised you how to operate the Software so as to achieve the functionality described in the Documentation. Only if you inform PESA of your problem with the Software during the applicable warranty period and provide evidence of the date you purchased a license to the Software will PESA be obligated to honor this warranty. PESA will use reasonable commercial efforts to repair, replace, advise or, for individual consumers, refund pursuant to the foregoing warranty within 30 days of being so notified.

THIS IS A LIMITED WARRANTY AND IT IS THE ONLY WARRANTY MADE BY PESA. PESA MAKES NO OTHER EXPRESS WARRANTY AND NO WARRANTY OF NONINFRINGEMENT OF THIRD PARTIES' RIGHTS. THE DURATION OF IMPLIED WARRANTIES, INCLUDING WITHOUT LIMITATION, WARRANTIES OF MERCHANTABILITY AND OF FITNESS FOR A PARTICULAR PURPOSE, IS LIMITED TO THE ABOVE LIMITED WARRANTY PERIOD; SOME JURISDICTIONS DO NOT ALLOW LIMITATIONS ON HOW LONG AN IMPLIED WARRANTY LASTS, SO LIMITATIONS MAY NOT APPLY TO YOU. NO PESA DEALER, AGENT, OR EMPLOYEE IS AUTHORIZED TO MAKE ANY MODIFICATIONS, EXTENSIONS, OR ADDITIONS TO THIS WARRANTY. If any modifications are made to the Software by you during the warranty period; if the media is subjected to accident, abuse, or improper use; or if you violate the terms of this Agreement, then this warranty shall immediately be terminated. This warranty shall not apply if the Software is used on or in conjunction with hardware or software other than the unmodified version of hardware and software with which the software was designed to be used as described in the Documentation. THIS WARRANTY GIVES YOU SPECIFIC LEGAL RIGHTS, AND YOU MAY HAVE OTHER LEGAL RIGHTS THAT VARY BY JURISDICTION.

Scope of Grant

You may:

- use the Software on any single computer;
- use the Software on a second computer so long as only one copy is used at a time;
- copy the Software for archival purposes, provided any copy must contain all of the original Software's proprietary notices.

You may not:

- permit other individuals to use the Software except under the terms listed above;
- permit concurrent use of the Software;
- modify, translate, reverse engineer, decompile, disassemble (except to the extent applicable laws specifically prohibit such restriction), or create derivative works based on the Software;
- copy the Software other than as specified above;
- rent, lease, grant a security interest in, or otherwise transfer rights to the Software; or
- remove any proprietary notices or labels on the Software.

Title

Title, ownership rights, and intellectual property rights in the Software shall remain in PESA and/or its suppliers. The Software is protected by the copyright laws and treaties. Title and related rights in the content accessed through the Software is the property of the applicable content owner and may be protected by applicable law. This License gives you no rights to such content.

Termination

The license will terminate automatically if you fail to comply with the limitations described herein. On termination, you must destroy all copies of the Software and Documentation.

LIMITATION OF LIABILITY. UNDER NO CIRCUMSTANCES AND UNDER NO LEGAL THEORY, TORT, CONTRACT, OR OTHERWISE, SHALL PESA OR ITS SUPPLIERS OR RESELLERS BE LIABLE TO YOU OR ANY OTHER PERSON FOR ANY INDIRECT, SPECIAL, INCIDENTAL, OR CONSEQUENTIAL DAMAGES OF ANY CHARACTER INCLUDING, WITHOUT LIMITATION, DAMAGES FOR LOSS OF GOODWILL, WORK STOPPAGE, COMPUTER FAILURE OR MALFUNCTION, OR ANY AND ALL OTHER COMMERCIAL DAMAGES OR LOSSES. IN NO EVENT WILL PESA BE LIABLE FOR ANY DAMAGES IN EXCESS OF THE AMOUNT PESA RECEIVED FROM YOU FOR A LICENSE TO THE SOFTWARE, EVEN IF PESA SHALL HAVE BEEN INFORMED OF THE POSSIBILITY OF SUCH DAMAGES, OR FOR ANY CLAIM BY ANY OTHER PARTY. THIS LIMITATION OF LIABILITY SHALL NOT APPLY TO LIABILITY FOR DEATH OR PERSONAL INJURY TO THE EXTENT APPLICABLE LAW PROHIBITS SUCH LIMITATION. FURTHERMORE, SOME JURISDICTIONS DO NOT ALLOW THE EXCLUSION OR LIMITATION OF INCIDENTAL OR CONSEQUENTIAL DAMAGES, SO THIS LIMITATION AND EXCLUSION MAY NOT APPLY TO YOU.

Miscellaneous

If the copy of the Software you received was accompanied by a printed or other form of “hard-copy” End User License Agreement whose terms vary from this Agreement, then the hard-copy End User License Agreement governs your use of the Software. This Agreement represents the complete agreement concerning this license and may be amended only by a writing executed by both parties. THE ACCEPTANCE OF ANY PURCHASE ORDER PLACED BY YOU IS EXPRESSLY MADE CONDITIONAL ON YOUR ASSENT TO THE TERMS SET FORTH HEREIN, AND NOT THOSE IN YOUR PURCHASE ORDER. If any provision of this Agreement is held to be unenforceable, such provision shall be reformed only to the extent necessary to make it enforceable. This Agreement shall be governed by Alabama law (except for conflict of law provisions).

What’s New for v3.0

v3.0 Technical Bulletin Available

For detailed v3.0 upgrade instructions, please see Technical Bulletin No. 81-9059-0501-0.

Indices Deleted

Starting with v3.0, indices are no longer used. Entities formerly used as indices may be renamed as categories.

Categories Now Optional

Categories, if used, are now simply sub strings used to build names (source, destination, and reentry) by concatenation. When the user presses a category button on a panel, the category is concatenated onto the right side of the name in the preset. If necessary, the left side of the name will be trimmed to bring its length to a maximum of eight characters. For v3.0, the rules for category names are as follows:

- Names shall be constructed from the following characters:
 - Letters: A through Z (including lower case letters if enabled)
 - Numbers: 0 through 9
 - Other Characters: Space (), hyphen-minus (-), exclamation mark (!), ampersand (&), plus sign (+), equals sign (=), commercial at (@), and low line (_).
- Names shall contain a minimum of one, and a maximum of eight characters.
- Names shall not begin with a space. Names may end with a space, have embedded spaces, and consist of a single space.
- Category names shall be unique in the universe of category names.

Using Categories

Functionally, categories only affect panel operations where panels have been defined to have categories assigned to their data keys.

Prior to v3.0, panels could have both a category and index assigned to a data key. Now, panels can have one or two categories assigned to a data key. When the user presses a category button, the panel concatenates the category to the source or destination name on the panel.

When two categories are assigned to a button, the panel uses the first category if the preset is blank. Otherwise, the panel concatenates the second category. This requires the user to use the CLEAR button to clear out the preset name before accessing the first category assigned to a key.

When there is only one category assigned to a button, it is always concatenated to the name in the preset.

For example, given a panel with the following definitions:

Button 1	Button 2	Button 3	Button 4	Button 5
Cat1: VTR	Cat1: CAM	Cat1: CG	Cat1: 3	Cat1: 4
Cat2: 0	Cat2: 1	Cat2: 2	Cat2:	Cat2:

To access VTR13 and take it online, the user would press:

- CLEAR (Clears out the name in the preset display)

- Button 1 (**VTR** in the preset display)
- Button 2 (**VTR1** in the preset display)
- Button 4 (**VTR13** in the preset display)
- TAKE (Causes **VTR13** to be taken to the active destination.)

Source/Destination/Reentry Names

Previous versions of the 3500Plus required that all source, destination and reentry names be constructed from a set of categories and indices. For v3.0, these names may be created directly according to the following rules:

1. Names shall be constructed from the following characters:
 - Letters: A through Z (including lower case letters if enabled)
 - Numbers: 0 through 9
 - Other Characters: Space (), hyphen-minus (-), exclamation mark (!), ampersand (&), plus sign (+), equals sign (=), commercial at (@), and low line (_).
2. Names shall contain a minimum of one, and a maximum of eight characters.
3. Names shall not begin or end with a space.
4. Source names shall be unique in the universe of source and reentry names.
5. Destination names shall be unique in the universe of destination and reentry names.
6. Reentry names shall be unique in the universe of reentry, source, and destination names.

Case Sensitivity

The v3.0 change allowing mixed case names only applies to source, destination, reentry, and category names. The use of mixed case names must be explicitly enabled in the Configuration Information dialog box accessed through the Win3500Plus **Configuration|Configuration Info** pull down menu.

Character Display Limitations

Trailing spaces in a category name shall be represented with the tilde (~) character.

Embedded spaces in a category name shall be represented with the space () character.

Due to a screen font limitation, the low line character (_) will be represented on-screen as the space character (). It will, however, be correctly displayed on panels as the low line character (_).

What's New for v3.1

v3.1 Technical Bulletin Available

For detailed v3.1 upgrade instructions, please see Technical Bulletin No. 81-9059-0502-0.

Operation of Clear Key on Certain RCPs

On Remote Control Panels (RCPs) that contain LCDs and Level keys, pressing the Clear key will cause the Preset Display to be cleared. Pressing the Clear key again causes the user to leave breakaway mode.

Use of Leading Spaces in Categories

Categories are now permitted to contain leading spaces.

Addition of Remote Clients as Configuration Item

A new configuration item, Remote Clients, has been added to allow the configuration of User IDs for use with network accessible equipment such as the PESA e-Route system controller.

Chapter 2 – Installation

Preliminary Settings

NOTE: The following information about CONFIG.SYS applies to 16-bit versions of Windows only.

The FILES= statement in your CONFIG.SYS file is used to specify the maximum number of files that can be open at the same time. Please ensure that in your CONFIG.SYS file, FILES= is set to at least 40 (FILES=40). You will need to reboot your PC after modifying CONFIG.SYS for the changes to take effect.

Installation

To install Win3500Plus, insert Disk 1 into your floppy drive and run SETUP.EXE. The Win3500Plus installation program will guide you through the installation.

If you are currently using Win3500, installing Win3500Plus will not overwrite any of your existing files as long as you install Win3500Plus in a different directory. The default installation directory for Win3500Plus is c:\win3500p in 16-bit versions of Windows and c:\program files\win3500p in 32-bit versions of Windows. However, during the installation process you will be given the opportunity to specify a different location if desired.

Chapter 3 – General Operation

Hardware Setup

Refer to the 3500Plus System Controller manual for hardware setup information including installation of the serial port cable between the controller and your PC (or optional external modem). After the cable or modem has been installed, apply power to the routing switcher system and setup the software.

Software Setup

After the hardware has been setup, start Win3500Plus and setup the software as follows:

Set Initial User Name

The first time Win3500Plus is started, the USER window will be displayed and you will be prompted to enter a user name. The eight-character alphanumeric string entered here may be changed later.

1. Enter “PESAUSER” in the **User Name** box (this is just an example, you may enter a different user name if you wish)
2. Click the **OK** button

Establish Serial Port Connection

The PC running Win3500Plus can be connected to the 3500Plus System Controller by cable or by modem. Choose one of the two following methods to establish your connection:

Method A - For Cable Connection

Open the **System** menu and select **Communications**. When the CPU LINK SETUP window is displayed, select the serial port on your PC which is connected to the 3500Plus System Controller (the default is COM1).

Next, select the communication speed that the 3500Plus System Controller has been configured to use. This will be a baud rate of either 9600 or 38400, and is determined by a DIP switch setting on the controller. See the 3500Plus System Controller manual for more information about this DIP switch.

The other serial port parameters (Stop Bits, and Parity) are automatically set by Win3500Plus.

Method B - For Modem Connection

Configure your Local Modem by setting the following parameters as shown:

1. Data Bits = 8
2. Parity = None
3. Stop Bits = 1
4. Hardware (RTS/CTS) Flow Control = Enabled

To configure the Remote Modem, see "Configure Remote (Modem)" on page 23.

Test Serial Port Connection

To verify that the serial link between your PC and the 3500Plus System Controller is functioning correctly, perform the CPU Link Test shown on page 77. This test should be performed for either a direct cable connection or a modem connection.

Create User Account

NOTE: User accounts provide an optional means of restricting access to certain routing switcher functions on a user-by-user basis.

Open the **System** menu, select **User Account**, and when the USER ACCOUNT window (Figure 3 on page 20) is displayed:

1. Click the **Add** button.
2. Type "PESAUSER" in the **User Name** box.
3. Check the **All Privileges** box.
4. Click the **Change Password** button. When the PASSWORD window is displayed, type "USERPASS" in the **Password** box and click the **OK** button. When the VERIFY PASSWORD window is displayed, type "USERPASS" in the **Password** box and click the **OK** button.
5. Click the **OK** button in the USER ACCOUNT window.
6. Click the **Exit** button to close the USER ACCOUNT window.

Create Sample Configuration

NOTE: Configuration passwords are optional and rarely used on most systems. While the use of password protection is illustrated below, you will probably not use this feature when creating your operational configuration.

Open the **File** menu, select **Save Configuration**, and when the CONFIGURATION SAVE window is displayed:

1. Type "PESACONF" in the **Configuration Directory** box.
2. Click the **OK** button.

When the CONFIGURATION INFORMATION window is displayed:

1. Type "PESA SAMPLE 1" in the **Configuration Name** box.
2. Leave **Chop Rate** set to 1.
3. Click on the **Password Protected** box. When the PASSWORD window is displayed, type "CONFPASS" in the **Password** box and click the **OK** button. When the VERIFY PASSWORD window is displayed, type "CONFPASS" in the **Password** box and click the **OK** button.
4. Click the **OK** button.

Software Setup Summary

You have now:

1. Established and tested a serial port connection to the 3500Plus System Controller.
2. Created a User Account named PESAUSER which has all privileges and is protected with the password USERPASS.
3. Created a Configuration named PESA SAMPLE 1 which is protected with the password CONFPASS and is stored in subdirectory c:\pesaconf.

NOTE: If your operational configuration will make use of user accounts or configuration passwords, be sure to delete the sample user account and configuration created in this chapter to avoid compromising system security.

Win3500Plus Data

There are three types of data used by Win3500Plus:

1. User Account Data. User account data (user name, user password, and privileges) are stored in nonvolatile memory in the 3500Plus System Controller.
2. Configuration Data. Only one configuration can be stored in nonvolatile memory in the 3500Plus System Controller. All other configurations must be stored on the PC, and then downloaded to the 3500Plus System Controller as needed.
3. Communication/Modem Settings.
 - a. Local modem settings are stored with your operating system's other configuration information.
 - b. Remote Modem settings are stored on your PC in \win3500\program\rmcon.dbf.

NOTE: To prevent data loss, files associated with Configuration Data and Communication/Modem Settings should be included in your normal backup routine.

Chapter 4 – File Menu

Introduction

The **File** menu provides access to basic file management operations.

New Configuration

To create a new configuration, open the **File** menu and select **New Configuration**.

NOTE: Be sure to save your existing configuration before creating a new one.

Open Configuration

To open an existing configuration, open the **File** menu and select **Open Configuration**.

NOTE: Be sure to save your existing configuration before opening another one. Win3500Plus will not prompt you to save before opening the selected configuration, and any changes made since your last save will be lost.

Save Configuration

To save a new or modified configuration, open the **File** menu and select **Save Configuration**.

NOTE: You may not save a configuration to the working directory or any subdirectory of the working directory. The working directory is the directory where WIN3500 was installed. If you used the default settings of the installation program, this will be c:\win3500p in 16-bit versions of Windows and c:\program files\win3500p in 32-bit versions of Windows.

When the CONFIGURATION SAVE window is displayed:

1. Select the subdirectory where the configuration will be saved.

2. Click the **OK** button.

When the CONFIGURATION INFORMATION window is displayed:

1. Type (or change) the **Configuration Name**.
2. Change the **Chop Rate** if desired.
3. Select or deselect the **Password Protected** box.
4. Click the **OK** button.

Print Setup

To setup your printer, open the **File** menu and select **Print Setup**. This will open the standard print setup dialog box generated by your operating system.

Print

To print a copy of a configuration, open the **File** menu and select **Print**.

When the PRINT window (Figure 1) is displayed, select one of the following:

1. **Print Configuration** to print the entire configuration.
2. **Select Items to Print** to print only a selected portion of the configuration.
3. **Print Select Panels** to display the PANEL PRINT SELECTION window (Figure 2) to print configuration data for selected panels.

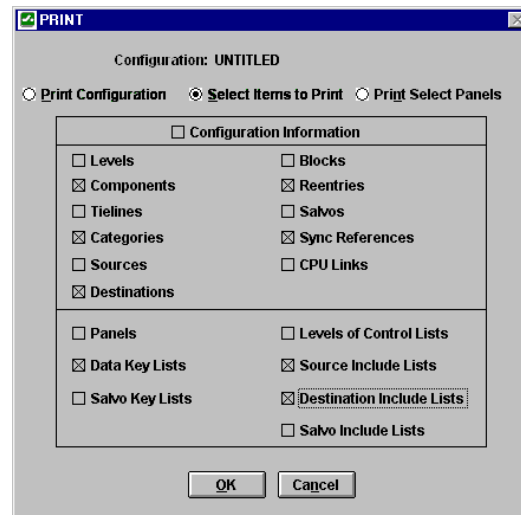


Figure 1 Print Window

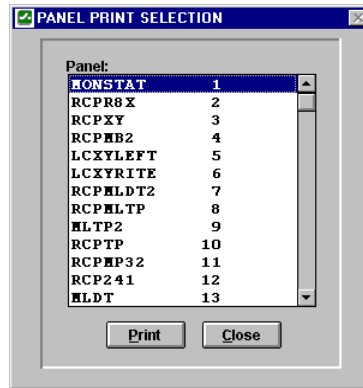


Figure 2 Panel Print Selection Window

Exit

To exit Win3500Plus, open the **File** menu and select **Exit**.

Chapter 5 – System Menu

Introduction

The **System** menu provides access to operations pertaining to the 3500Plus System Controller interface.

Log On to Controller

Open the **System** menu and select **Log On to Controller** to log on to the 3500Plus System Controller. When the LOG IN window is displayed, enter the user name and password (if assigned).

NOTE: It is not necessary to log on to the 3500Plus System Controller unless one or more user accounts have been created. If a functioning serial connection exists between the PC and the controller, as soon as Win3500Plus is started, the user will be connected to the controller.

The user will remain logged on until a log off command is issued, or until the user exits Win3500Plus.

Log Off of Controller

Open the **System** menu and select **Log Off of Controller** to log off of the 3500Plus System Controller.

Download Configuration to Controller

Open the **System** menu and select **Download Configuration to Controller** to download a configuration from the PC to the 3500Plus System Controller.

NOTE: To avoid data loss, be sure to save a copy of the configuration loaded in the 3500Plus System Controller before overwriting it with the downloaded configuration.

Upload Configuration from Controller

Open the **System** menu and select **Upload Configuration from Controller** to upload a configuration from the 3500Plus System Controller to the PC.

NOTE: To avoid data loss, be sure to save the configuration currently loaded in Win3500Plus before overwriting it with the uploaded configuration.

Controller Configuration Name

Open the **System** menu and select **Controller Configuration Name** to display the name of the configuration currently loaded in the 3500Plus System Controller.

User Account

Open the **System** menu and select **User Account** to display the USER ACCOUNT window (Figure 3).

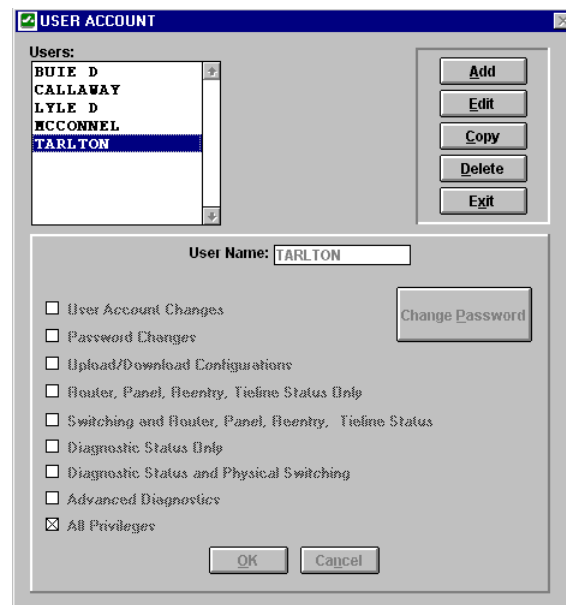


Figure 3 User Account Window

A user account is a set of privileges and an optional user password, saved as a user name. They provide a means of restricting access to certain system functions on a user-by-user basis.

NOTE: User accounts are an optional feature. If used, at least one user account must be assigned all privileges. If no user accounts are configured, all users have all privileges.

User account privileges are defined as follows:

1. **User Account Changes:** User is allowed to add, edit, or delete user accounts.

2. **Password Changes:** User is allowed to configure or change their password.
3. **Upload/Download Configurations:** User is allowed to upload and download configurations as well as perform online panel changes.
4. **Router, Panel, Reentry, Tieline Status Only:** User is allowed to obtain the status of the router, control panels, reentries, and tielines; but is not allowed to take switches and free tielines.
5. **Switching and Router, Panel, Reentry, Tieline Status:** User is allowed to obtain the status of all switching system functions and to take switches and to free tielines.
6. **Diagnostic Status Only:** User is allowed to utilize the control system diagnostics to obtain the physical status (i.e. readback and confidence) of the switching system. This selection will not allow the user to perform physical switches or advanced diagnostics.
7. **Diagnostic Status and Physical Switching:** User is allowed to utilize the control system diagnostics to obtain the status of the switching system and to perform physical switches on the switching system.
8. **Advanced Diagnostics:** User is allowed to utilize the control system diagnostics to perform all diagnostic functions including physical switches. Some of these capabilities include clearing configuration locks, disabling/enabling block checking, disabling/enabling the switcher, resetting the controller, resetting panels, and exporting text files to the controller.
9. **All Privileges:** User is allowed the full access to all controller features and user account management.

To copy an existing user account to a new user account, select the **User** to be copied, click the **Copy** button, enter the new **User Name**, and click the **OK** button.

To modify an existing user account, select the **User** to be modified, click the **Edit** button, make any desired changes, and click the **OK** button.

Once all changes to user accounts have been made, click the **Exit** button to close the USER ACCOUNT window. At this time all changes will be downloaded to the 3500Plus System Controller for storage.

Communications

Open the **System** menu and select **Communications** to display the CPU LINK SETUP window (Figure 4).

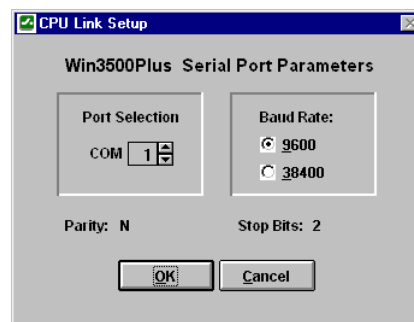


Figure 4 CPU Link Setup Window

Select the serial port on the PC which will be connected to the 3500Plus System Controller (the default is COM1).

Next, select the communication speed that the 3500Plus System Controller has been configured to use. This will be a baud rate of either 9600 or 38400, and is determined by a DIP switch setting on the controller. See the 3500Plus System Controller manual for more information about this DIP switch.

Click the **OK** button.

If the connection will be made by modem, select the port on the PC which has been assigned to the local modem.

The other serial port parameters (Stop Bits, and Parity) are automatically set by Win3500Plus.

Modem

In addition to controlling a 3500Plus System Controller through a direct serial port connection, Win3500Plus also has the capability to do so via modem over standard telephone lines. This requires two modems, a local modem at the PC and a remote modem at the 3500Plus System Controller. The remote modem must be properly configured before it can be connected to the 3500Plus System controller. See “Configure Remote (Modem)” on page 23 for more information.

Call Remote (Modem)

Open the **System** menu, select **Modem**, and then select **Call Remote** to display the CALL window (Figure 5).

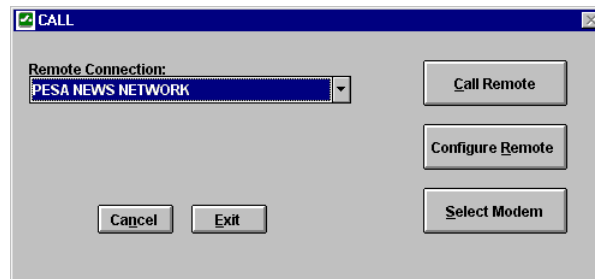


Figure 5 Call Window

To connect a PC to a 3500Plus System Controller by using a local modem at the PC and a remote modem at the controller:

1. Select the location to be called from the **Remote Connection** drop box.
2. Click the **Select Modem** button to display the MODEM window (Figure 7 on page 23). Select the type of remote modem and click the OK button to close the MODEM window.
3. Click the **Call Remote** button to initiate the call to the remote modem.

The list of remote locations is managed by clicking on the **Configure Remote** button to display the REMOTE CONNECTION window (Figure 6). Remote locations may then be added, edited, and deleted. Both the **Remote Connection** and **Phone** text boxes will accept alphanumeric strings up to 25 characters in length.



Figure 6 Remote Connection Window

Hang Up

Open the **System** menu, select **Modem** and then **Hang Up** to disconnect your PC from the remote modem.

Configure Remote (Modem)

Open the **System** menu, select **Modem** and then **Configure Remote** to display the MODEM window (Figure 7).

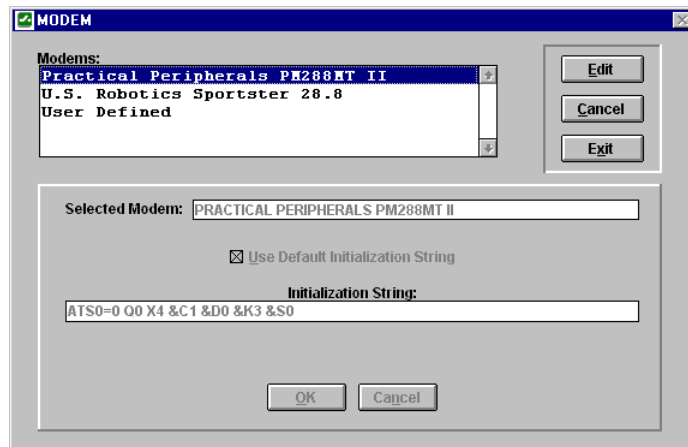


Figure 7 Modem Window

The remote modem must be an external type capable of being configured to automatically answer incoming calls. Because the 3500 System Controller does not output any modem configuration information, the remote modem must be completely transparent to the controller. The only modems tested by PESA for use as remote modems are the Practical Peripherals PM288MT II and the U.S. Robotics Sportster 28.8 using the following initialization strings:

PM288MT II: AT S0=2 Q1 X4 &C1 &D0 &K3 &S1 &W0 &Y0

Sportster 28.8: AT &F1 S0=2 &H1 &R2 &I0 L2 Q1 &C1 &D0 Y0 &W0

For more information about these modems and their initialization strings, see the Practical Peripherals web site at <http://www.practical.com/> or the U.S. Robotics web

site at <http://www.usr.com/>. Before using any other type of modem for the remote modem, please consult with the PESA Customer Service Department.

Once a remote modem has been selected, it must be properly configured before it is connected to a 3500 System Controller. This is done by connecting the remote modem to a PC running WIN3500, transferring certain data into the remote modem, disconnecting the remote modem from the PC, and then connecting the remote modem to the controller.

Configure the remote modem as follows:

1. Open the **System** menu and select **Communications**. When the CPU LINK SETUP window (Figure 4 on page 21) is displayed, note the current port selection (for use in step 5 below), select the serial port on the computer that will be used to temporarily connect to the remote modem, and then click the **OK** button.
2. Open the **System** menu, select **Modem**, and then select **Configure Remote**. This will open the REMOTE MODEM CONFIGURATION window which states: "Please connect remote modem to Comm Port x for configuration". Connect the remote modem to the serial port specified and click the **OK** button.
3. The MODEM window (see Figure 7 on page 23) will now be displayed. Select the remote modem from the list shown and click the **Exit** button. The appropriate initialization string will now be sent to the remote modem where it will be stored in nonvolatile memory.
4. Disconnect the remote modem from the PC. It may now be transported to the remote location for connection to the 3500Plus System Controller.
5. Open the **System** menu and select **Communications**. When the CPU LINK SETUP window (Figure 4 on page 21) is displayed, return the port selection to its original state (before the change in Step 1 was made), and then click the **OK** button.

Set User

To create or edit configurations while not connected to a 3500Plus System Controller, open the **System** menu and select **Set User**. When prompted, enter a **User Name** and click the **OK** button.

The user name entered here will be attached to any configuration created or modified and will be displayed in the CONFIGURATION INFORMATION window (Figure 14 on page 33).

Chapter 6 – Router Menu

Introduction

The **Router** menu provides access to operations which involve directly accessing an operational routing switcher system in real time.

NOTE: The **Router** menu allows certain changes to be made directly to the configuration residing in the 3500Plus System Controller. The configuration residing in the PC is not updated to reflect these changes. In order to preserve a copy of the modified Configuration, it will be necessary to upload a copy of the configuration from the controller to the PC, and save it there.

Router Status

Open the **Router** menu and select **Router Status** to display the ROUTER STATUS AND CONTROL window (Figure 8). The information shown in this window is automatically updated as changes occur.

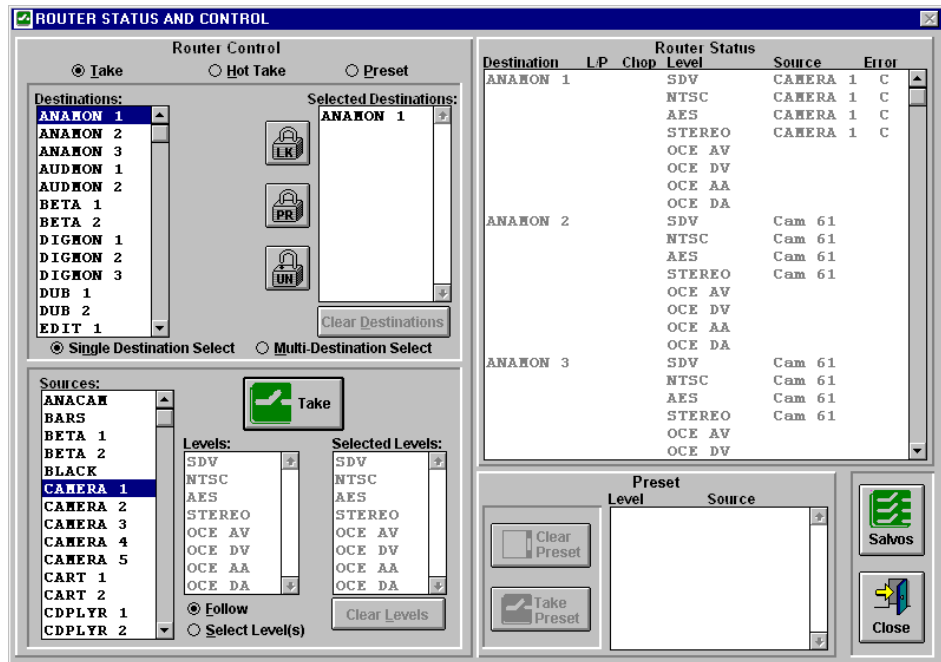


Figure 8 Router Status and Control Window

From this window it is possible to:

1. Execute takes and hot takes for single or multiple destinations as follow switches or breakaway switches.
2. Configure and take switches on presets.
3. Display and execute salvos.

Take Mode

NOTE: Single-click a destination to see its status. Double-click destinations and sources to select them for switches.

To take a switch in Take mode:

1. Select either the **Single Destination** or the **Multi-Destination** radio button
2. Select the Destination(s)
3. Select either the **Follow** or the **Select Level(s)** radio button
4. Select the Source (and Level(s) if applicable)
5. Click the **Take** button

Hot Take Mode

Hot Take mode is the same as Take mode except the switch is taken immediately when the source is selected.

NOTE: The source selection (by double-clicking) is the event that triggers the switch command in Hot Take mode. Before selecting the source, ensure that all destinations and levels have been selected.

Preset Mode

Preset mode allows you to take a switch using levels from different sources. To take a switch in Preset mode:

1. Select either the **Single Destination** or the **Multi-Destination** radio button
2. Select the Destination(s)
3. Select the **Select Level(s)** radio button
4. Select (by single-clicking) the first Source
5. One-by-one, select (by double-clicking) the levels of this source to be switched.
6. Repeat steps 4 and 5 for all other sources and levels.
7. Click the **Take Preset** button

Salvos

Clicking the **Salvos** button in the ROUTER STATUS AND CONTROL window opens the SALVO CONTROL window (Figure 9). Selecting a salvo will display its contents. To take the selected salvo, click the **Take** button.

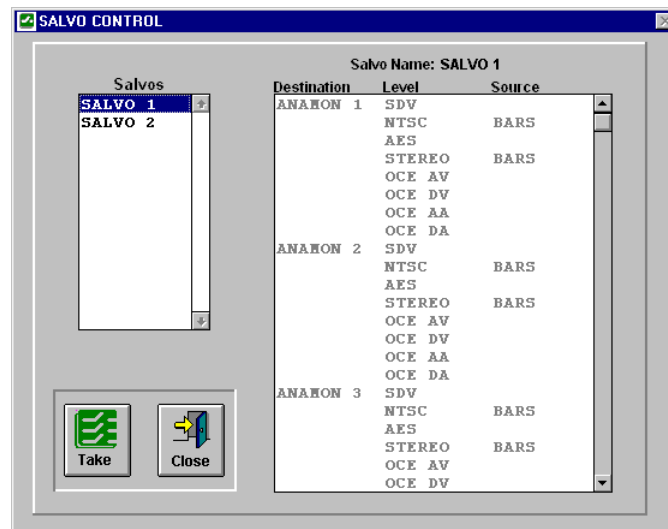


Figure 9 Salvo Control Window

Panel Status

Open the **Router** menu and select **Panel Status** to display the PANEL STATUS window (Figure 10). Click the **Refresh** button to update the information displayed.

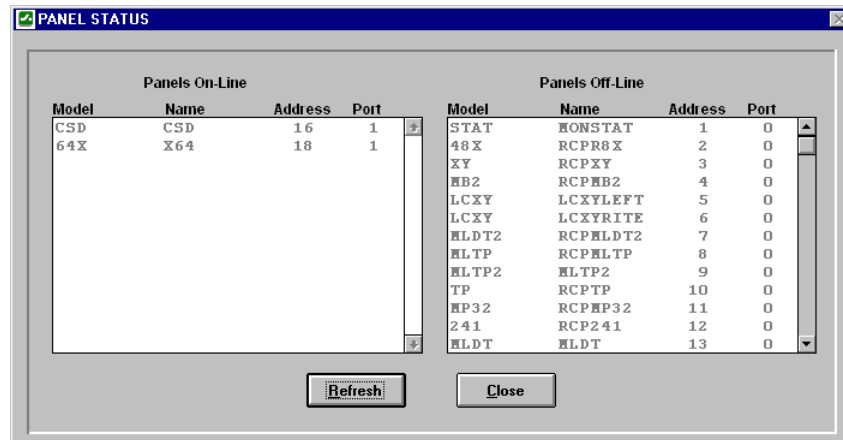


Figure 10 Panel Status Window

On-Line panels are those which are currently communicating with the controller.

A panel may be off-line for one or more of the following reasons:

1. Loss of power.
2. Bad data bus connection.
3. Internal hardware failure.
4. Panel address DIP switch setting different from address in configuration.

Online Panel Cfg

Open the **Router** menu and select **Online Panel Cfg** to display the PANEL window (Figure 41).

Online Panel configuration allows control panels to be added and modified without having to take the control system offline and download a new configuration. However, because of the potential impact involved, online panel deletion is not permitted.

Online configuration of panels is performed in the same manner as offline configuration. For more information, see “Panel” on page 57.

NOTE: Configuration changes made with Online Panel Configuration are sent directly to the 3500Plus System Controller and are not saved in the configuration currently open in Win3500Plus.

Reentry Status

Open the **Router** menu and select **Reentry Status** to display the REENTRY STATUS window (Figure 11). Click the **Refresh** button to update the information displayed.

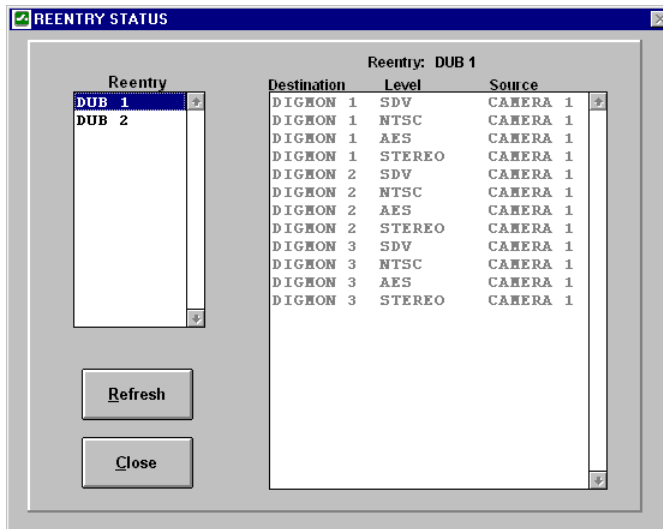


Figure 11 Reentry Status Window

This window displays direct source-to-destination status for every configured reentry.

Sync Ref Status

Open the **Router** menu and select **Sync Ref Status** to display the SYNC REFERENCE STATUS window (Figure 12). Click the **Refresh** button to update the information displayed.

NOTE: If only the default Sync Reference SYNC1 is configured, this window will not be displayed. To configure additional Sync References, see “Sync Reference” on page 53.

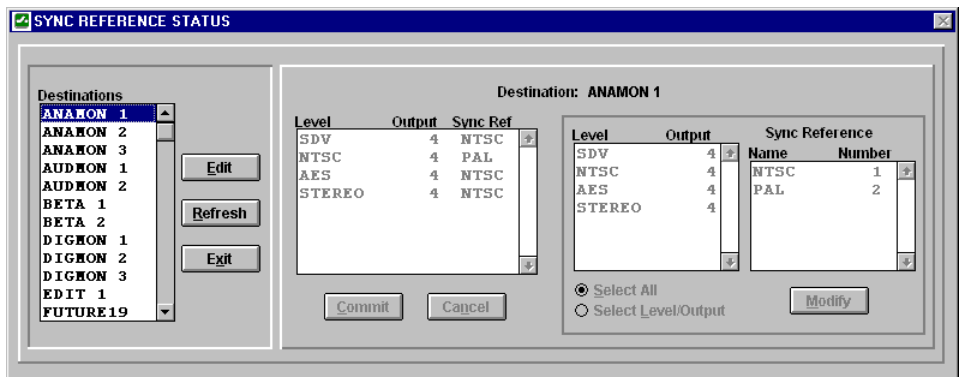


Figure 12 Sync Reference Status Window

To change the Sync Ref for a Destination:

1. Select the Destination to be changed
2. Click the **Edit** button

3. To change the Sync Ref for all levels, select the **Select All** radio button. To change Sync Ref for selected levels, select the **Select Level/Output** radio button and select the first level to be changed.
4. Click the **Modify** button.
5. Repeat steps 3 and 4 for all levels to be changed.
6. When all levels have been changed, click the **Commit** button to send the change to the 3500Plus System Controller.

Tieline Status

Open the **Router** menu and select **Tieline Status** to display the TIELINE MANAGEMENT window (Figure 13). Click the **Refresh** button to update the information displayed.

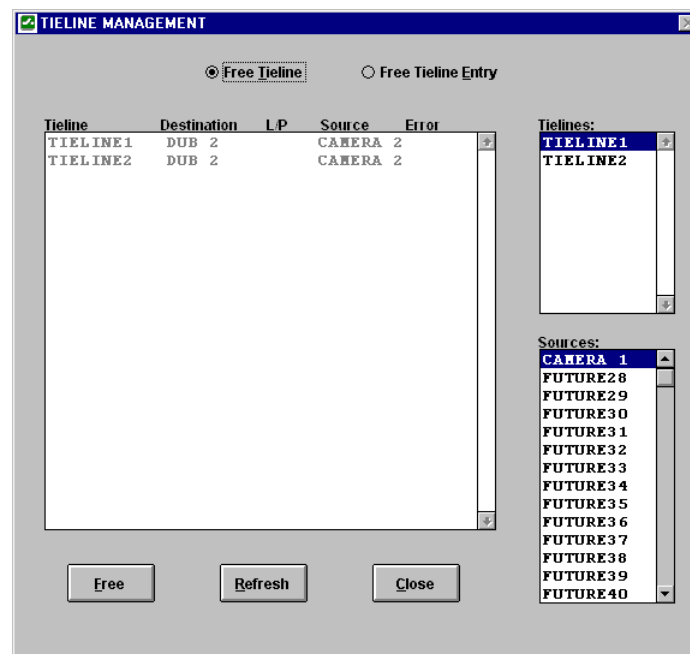


Figure 13 Tieline Management Window

Since each tieline can only be used by a single source, they are a limited resource which, periodically, may need to be reallocated to different sources. This is done by freeing the tieline. A tieline is freed when all destinations using the tieline have been switched to other sources.

A source using a tieline, just like any other source, may be switched to multiple destinations at any given time. This window should be consulted before freeing a tieline so the full scope of the intended change may be seen. Every configured tieline will be listed and, for each tieline currently in use, the source and every destination will also be shown.

NOTE: When a tieline is freed, all affected destinations will be switched to the selected source. To avoid unexpected results, ensure that the desired source has been selected before clicking the **Free** button.

To free a tieline in its entirety:

1. Select the **Free Tieline** radio button.
2. Select the **Source** that will be switched to all destinations currently using the tieline.
3. Select any **Destination** using the tieline.
4. Click the **Free** button.

To free a single destination using a tieline:

1. Select the **Free Tieline Entry** radio button.
2. Select the **Source** that will be switched to the destination.
3. Select a **Destination** to be switched.
4. Click the **Free** button. Repeat as required.

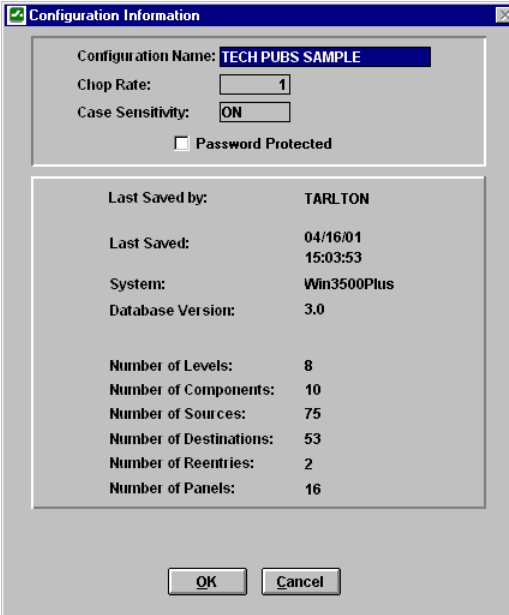
Chapter 7 – Configuration Menu

Introduction

The **Configuration** menu provides access to operations which involve creating, and managing configurations. While these operations may be performed while either offline or connected to a 3500Plus System Controller, they will not take effect until downloaded to the controller.

Configuration Information

Open the **Configuration** menu and select **Configuration Information** to display the CONFIGURATION INFORMATION window (Figure 14). This window shows information about the configuration currently open in Win3500Plus.



The Configuration Information window displays the following configuration details:

Configuration Name:	TECH PUBS SAMPLE
Chop Rate:	1
Case Sensitivity:	ON
<input type="checkbox"/> Password Protected	
Last Saved by: TARLTON	
Last Saved: 04/16/01 15:03:53	
System: Win3500Plus	
Database Version: 3.0	
Number of Levels:	8
Number of Components:	10
Number of Sources:	75
Number of Destinations:	53
Number of Reentries:	2
Number of Panels:	16

Buttons: OK, Cancel

Figure 14 Configuration Information Window

To name or rename the current configuration, enter the desired name in the **Configuration Name** box. Configuration names may have up to 32 alphanumeric

characters. This name will appear in the Win3500Plus title bar and may be queried from the 3500Plus System Controller.

To change the chop rate, enter the desired value in the **Chop Rate** box. The range of Chop Rates the Win3500Plus Control System can be configured for is shown in Table 1 on page 1.

To enable or disable case sensitivity for category, source, destination, and reentry names, enter either ON or OFF in the Case Sensitivity box.

To password protect the current configuration, check the **Password Protected** box to open the PASSWORD window. Enter the desired password (one to eight, upper case, alphanumeric characters) into the **Password** box and click the **OK** button to return to the CONFIGURATION INFORMATION window.

After all changes have been made to configuration name, chop rate and password, click the **OK** button to close the CONFIGURATION INFORMATION window.

Level

Open the **Configuration** menu and select **Level** to display the LEVEL window (Figure 15). This will allow you to add, edit, and delete levels. The maximum number of levels allowed is shown in Table 1 on page 1.

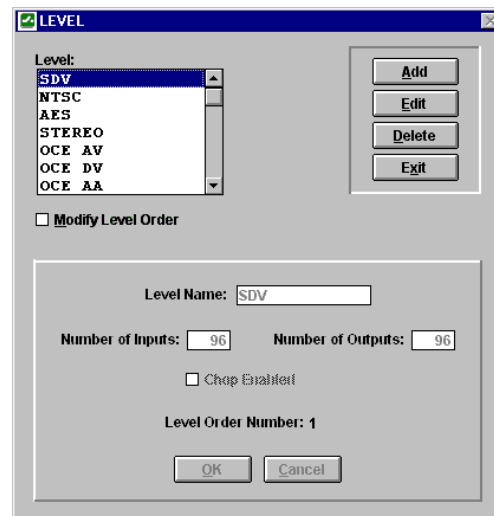


Figure 15 Level Window

A level is a group of related components that are switched together by Win3500Plus. The example shown in Figure 16 is a 2x2 RGB video level named VID which is made up of three components named RED, GRN and BLU.

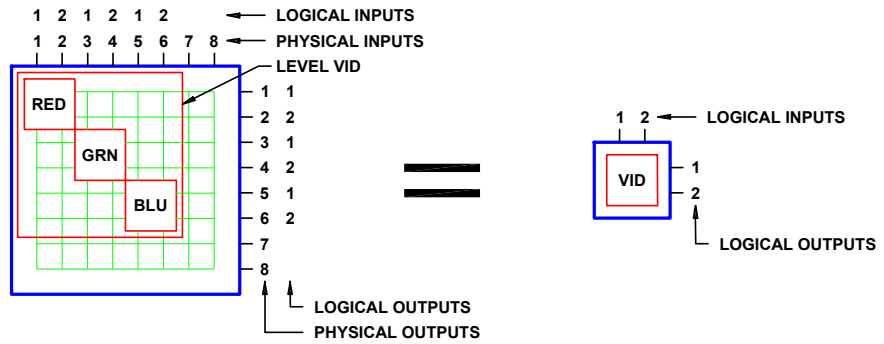


Figure 16 A 2x2 RGB Level

To add a level:

1. Click the **Add** button.
2. Enter the level name in the **Level Name** box. Level names are one to eight characters in length and are constructed using uppercase letters, numbers, and spaces. The first character must be a letter. For the example shown in Figure 16, "VID" would be used.
3. Specify the **Number of Inputs** and **Number of Outputs** for the Level. The maximum number of inputs or outputs per level is shown in Table 1 on page 1. The inputs and outputs referred to here are logical inputs and logical outputs. For the example shown in Figure 16, "2" and "2" would be used.
4. Enable **Chop** if desired (Chop should usually be enabled for all video levels and disabled for all audio levels).
5. If you wish to change the level order for this level, check the **Modify Level Order** box to open the LEVEL ORDER window (Figure 17). Use the **Move** and **Remove** buttons to construct a new list of levels in the desired order. Level order controls the order of display when levels are displayed on a control panel or addressed in CPU link protocols.
6. Click the **OK** button.

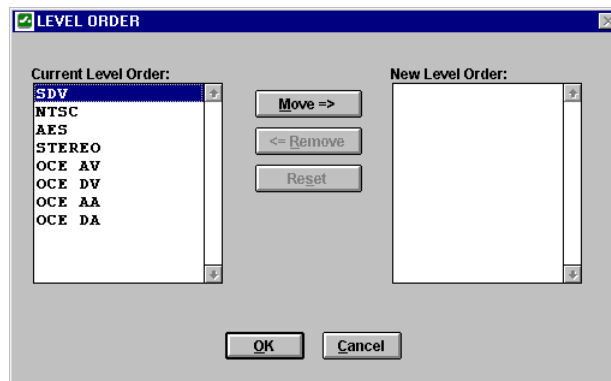


Figure 17 Level Order Window

Deleting Levels

Choosing to delete a Level on a fully configured system may have a significant effect on all items which the level is associated with. Under these circumstances,

selecting Delete will open the LEVEL DELETE window (Figure 18), which displays all of the potentially impacted items. If there are no impacted items, such as is the case with a new configuration, the CONFIRM DELETE window will be displayed instead.

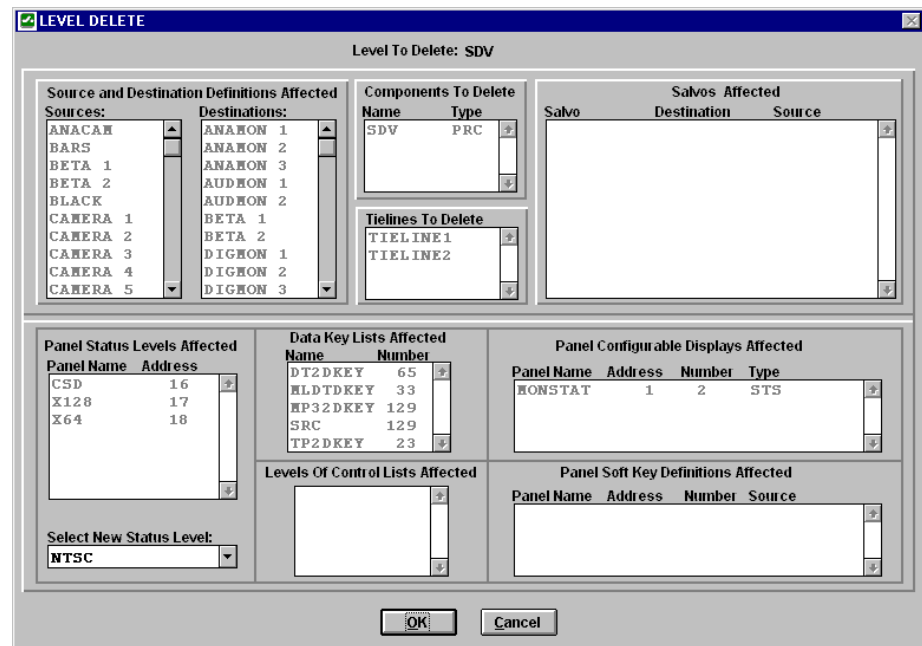


Figure 18 Level Delete Window

The LEVEL DELETE window displays all items that may be affected by the deletion of a level. Deleting a level results in the following:

1. The deletion of the part of a source's or destination's definition on that level
2. The deletion of any components associated with that level
3. The deletion of any tielines defined on that level
4. The deletion of any salvo entries defined on that level
5. The blanking out of the status level for any panels having the selected level as the status level
6. Levels of control lists containing the selected level will have it deleted from their lists
7. Any panels with configurable displays (i.e. RCP-STAT Control Panels) with the selected level as part of their display will be blanked out
8. Any panels with soft keys defined on the selected level will have the entry for the selected level deleted

Component

Open the **Configuration** menu and select **Component** to display the COMPONENT window (Figure 19). This will allow you to add, edit, and delete components. The maximum number of components allowed is shown in Table 1 on page 1.

NOTE: At least one Level must be configured before the COMPONENT window will be displayed.

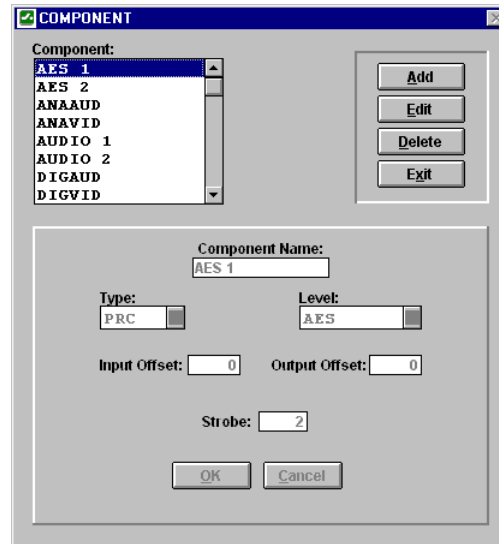


Figure 19 Component Window

A component is the most basic signal element which can be switched by a single crosspoint. For example, in RGB video, “Red”, “Green”, and “Blue” are components; in stereo audio, “Left” and “Right” are components. The example shown in Figure 20 is a 2x2 RGB video level named VID which is made up of three components named RED, GRN and BLU.

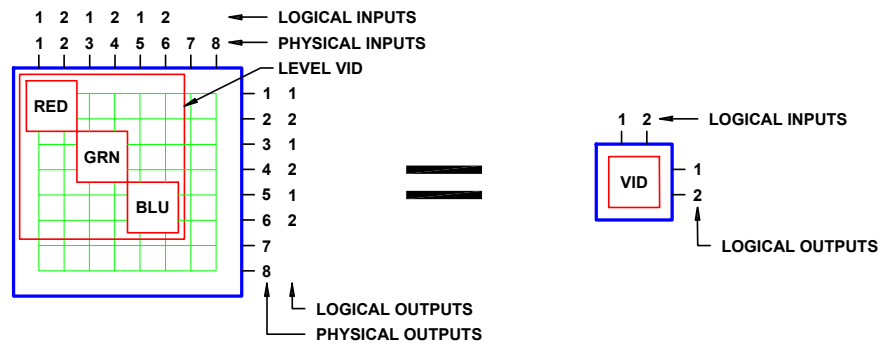


Figure 20 The Components of a 2x2 RGB Level

To add a component:

1. Click the **Add** button.
2. Enter the component name in the **Component Name** box. Component names are one to eight characters in length and are constructed using uppercase letters, numbers, and spaces. The first character must be a letter. For the example shown in Figure 20, “RED” would be used for the first component, “GRN” for the second, and “BLU” for the third.
3. Select the **Type** of routing switcher used for this component (PRC or RM5).

4. Select the level this component will be associated with from the **Level** drop box. For the example shown in Figure 20, “VID” would be used for all three components.
5. Enter the amount of **Input Offset** and **Output Offset**. Acceptable values for input and output offsets are shown in Table 1 on page 1. For the example shown in Figure 20, “0” and “0” would be used for the component “RED”; “2” and “2” would be used for the component “GRN”; and “4” and “4” would be used for the component “BLU”. For more information about these fields, see “Input Offset” on page 91 and “Output Offset” on page 96.

NOTE: Win3500Plus allows components to overlap in matrix space. Care should be taken when entering offsets to ensure that any resulting overlap of components is intentional.

6. Enter the **Strobe** assigned to the routing switcher which contains the component. Acceptable values for strobe are shown in Table 1 on page 1.

Every routing switcher in a switching system is assigned a strobe. This is usually accomplished by setting a DIP switch on the back of the routing switcher. Strobes do not have to be unique and, in larger systems, each strobe might be associated with several routing switchers.

In many switching systems, strobes are used to group levels of the same type together. For example, video may be on Strobe 1, audio on Strobe 2, etc.

7. Click the **OK** button.
8. Repeat steps 1 through 7 for each component being configured.

Tieline

Open the **Configuration** menu and select **Tieline** to display the TIELINE window (Figure 21). This will allow you to add, edit, and delete tielines. The maximum number of tielines allowed is shown in Table 1 on page 1.

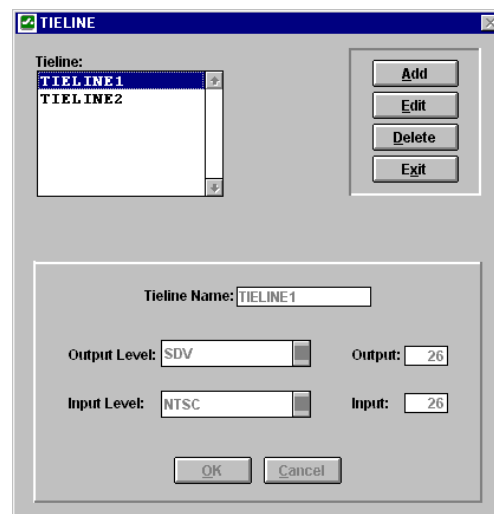


Figure 21 Tieline Window

A tieline is a special type of logical switch that allows a logical input on one level to be switched to a logical output on a different level. The example shown in Figure 22 demonstrates a tieline being used to route a video signal from an analog camera, through an external analog-to-digital converter, to a digital VTR.

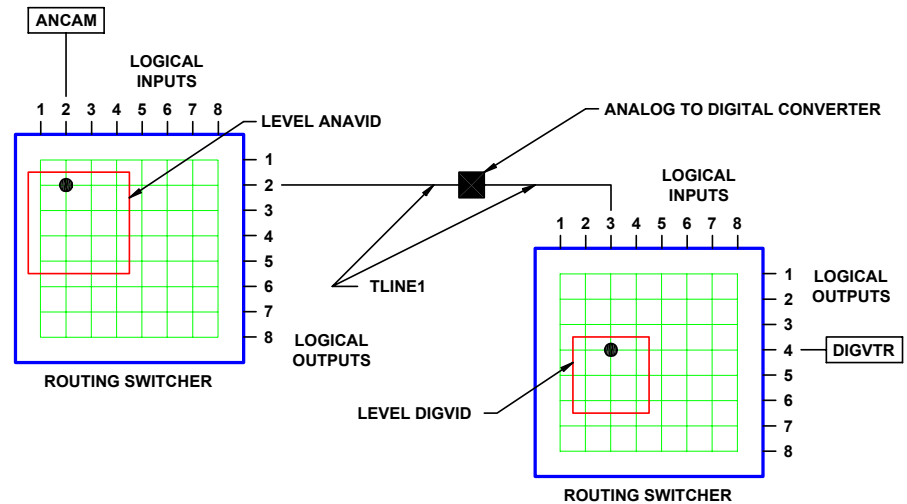


Figure 22 Configuring a Tieline

To add a tieline:

1. Click the **Add** button.
2. Enter the **Tieline Name**. Tieline names are one to eight characters in length and are constructed using uppercase letters, numbers, and spaces. The first character must be a letter. For the example shown in Figure 22, "TLINE1" would be used.
3. Select the **Output Level** from the drop box and enter the **Output** number. For the example shown in Figure 22, "ANAVID" and "2" would be used.
4. Select the **Input Level** from the drop box and enter the **Input** number (this is the logical input number). For the example shown in Figure 22, "DIGVID" and "3" would be used.
5. Click the **OK** button.

Once a tieline has been configured, it may then be used by a source. For more information about how to configure a source to use a tieline, see "Source" on page 39.

Source

Open the **Configuration** menu and select **Source** to display the SOURCE window (Figure 23). This will allow you to add, edit, and delete sources. The maximum number of sources allowed is shown in Table 1 on page 1.

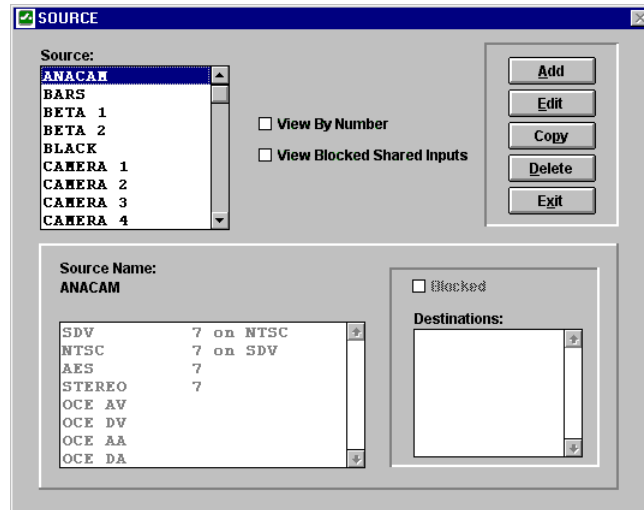


Figure 23 Source Window

NOTE: If you are using CPU Link Protocol 1, you may wish to enable **View By Number** to display the source number assigned to each source. These numbers will be shown on the left side of the **Source** list box.

When configuring a switching system, it may be desirable to use source blocking to restrict the switching of certain logical inputs. This may be done while configuring either sources or destinations.

Since a blocked source may contain a logical input that is shared (used by more than one source), care should be taken to ensure that all sources using the logical input are blocked from the destination to be protected.

Check the View Blocked Shared Inputs check box to display the BLOCKED SHARED INPUTS window (Figure 24). This window will only be displayed if at least one source block exists. The blocking status of shared inputs will be indicated by one of three messages displayed in red under the **Blocked Sources** list box

Selected Blocked Source Has No Shared Inputs: No shared inputs exist for the source selected.

All Shared Inputs of Selected Source Are Blocked: One or more shared inputs exist and the destination has been protected by blocking every source using any of the shared inputs.

Block Conflict Exists: All Shared Inputs of Selected Source Are Not Blocked: One or more shared inputs exist and the destination may not be adequately protected. At least one source using a restricted input has not been blocked from the destination.

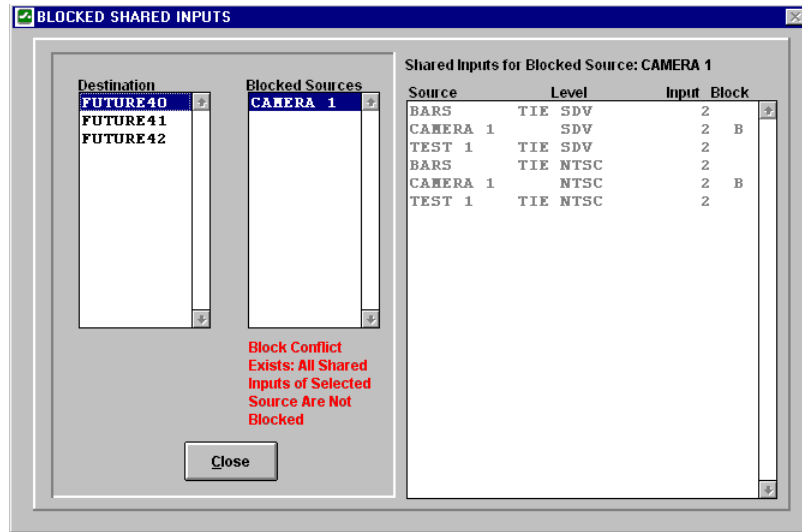


Figure 24 Blocked Shared Inputs Window

Source Names

Source names:

1. Shall be created using only the following characters:
Upper case letters A through Z
Lower case letters a through z if enabled in the control system software
Numbers 0 through 9
The following special characters: space (), hyphen-minus (-),
exclamation mark (!), ampersand (&), plus sign (+), equals
sign (=), commercial at (@), and low line (_)
2. Shall contain a minimum of one, and a maximum of eight characters.
3. Shall not begin or end with a space.
4. Shall be unique in the universe of source and reentry names.

Due to a screen font limitation, the low line character (_) will be represented on-screen by Win3500Plus as the space character (). It will, however, be correctly displayed on panels as the low line character (_).

Adding Sources

To add a source:

1. Click the **Add** button in the SOURCE window to open the SOURCE CONFIGURATION window (Figure 25).
2. Enter the **Source Name**.
3. If one or more tielines have been configured, the **Tieline** button will be enabled. Clicking this button will open the TIELINE SOURCE DEFINITION window (Figure 26) which will allow the use of a tieline input for a **Selected Level**:

- a) Select the **Source Level**. For the example shown in Figure 27, “DIGVID” would be used.
 - b) Select the **Tieline Level**. For the example shown in Figure 27, “ANAVID” would be used.
 - c) Enter the **Tieline Level Input**. For the example shown in Figure 27, “2” would be used.
 - d) Click **Modify** to update the **Source Definition** list box.
 - e) Once all desired tieline connections are created, click **OK** to return to the SOURCE CONFIGURATION window.
4. Use the **Move** and **Remove** buttons to build the **Selected Levels** list using levels associated with the first **Input Number** to be used.
 5. Select the first **Input Number** (logical input, not physical input).

NOTE: Selecting **Input Number** “0” for any level will result in that level being omitted from the source being configured.

6. Tab out of the **Input Number** list box or click on another field to update the **Source Definition** list box.
7. Repeat steps 4 through 6 for all **Input Numbers** being used.
8. Select the **Block** radio button to enable the source block section. Use the **Move** and **Remove** buttons to build the **Blocked Destinations** list.
9. Verify that all information shown in the **Source Definition** box is correct and then click the **OK** button to close the SOURCE CONFIGURATION window.

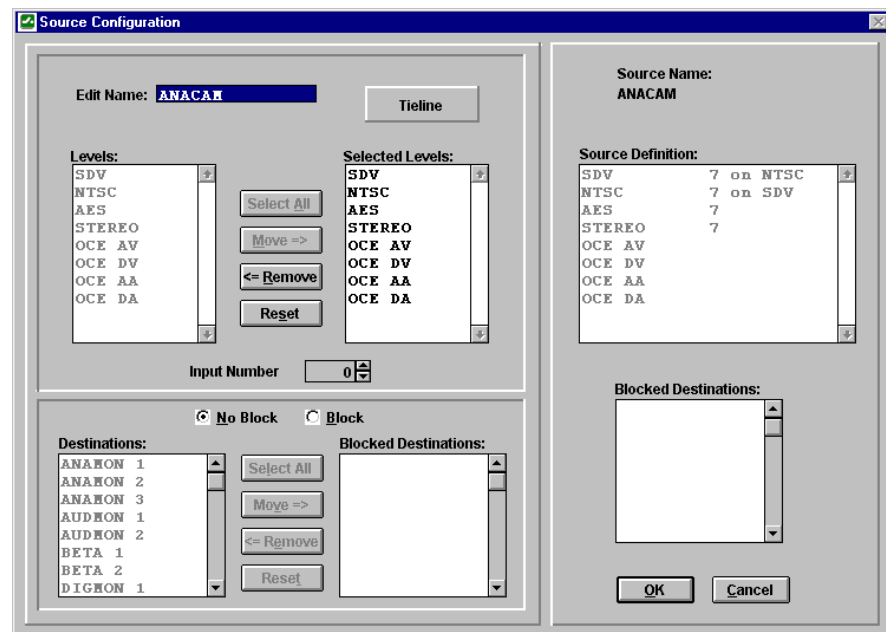


Figure 25 Source Configuration Window

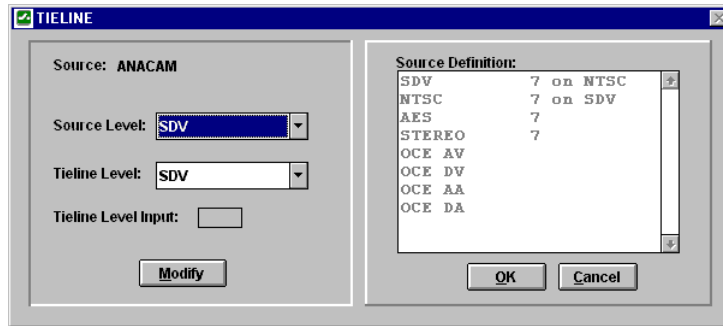


Figure 26 Tieline Source Definition Window

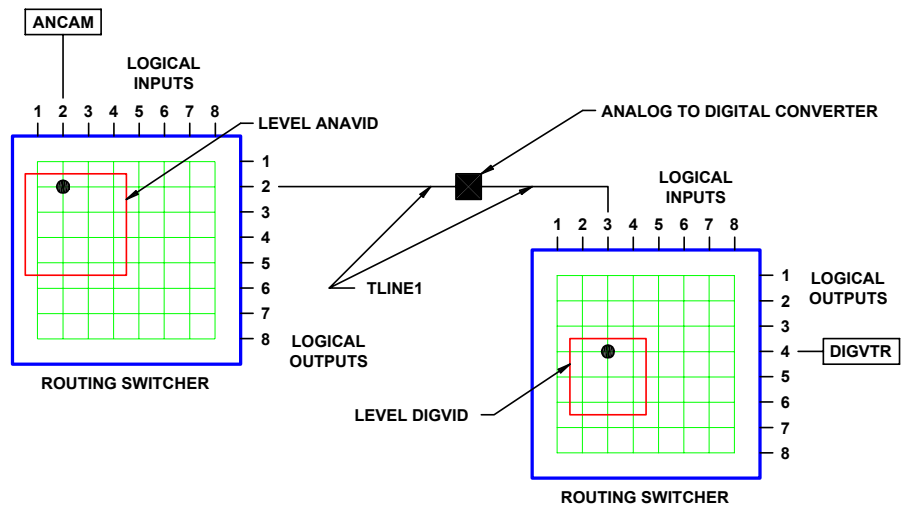


Figure 27 Configuring a Source to use a Tieline

To modify an existing source, select the source to be changed and click on the **Edit** button. This will open the SOURCE CONFIGURATION window (Figure 25) where any desired changes may be made.

To create a source based on an existing one, select the existing source and click on the **Copy** button. This will open the SOURCE CONFIGURATION window (Figure 25). When this window opens, select a new source name, and change the displayed source information as required.

Deleting Sources

Choosing to delete a source on a fully configured system may have a significant impact on all items with which the source is associated. Under these circumstances, selecting **Delete** will open the SOURCE DELETE window (Figure 28) which displays all of the potentially impacted items. If there are no impacted items, such as is the case with a new configuration, the CONFIRM DELETE window will be displayed instead.

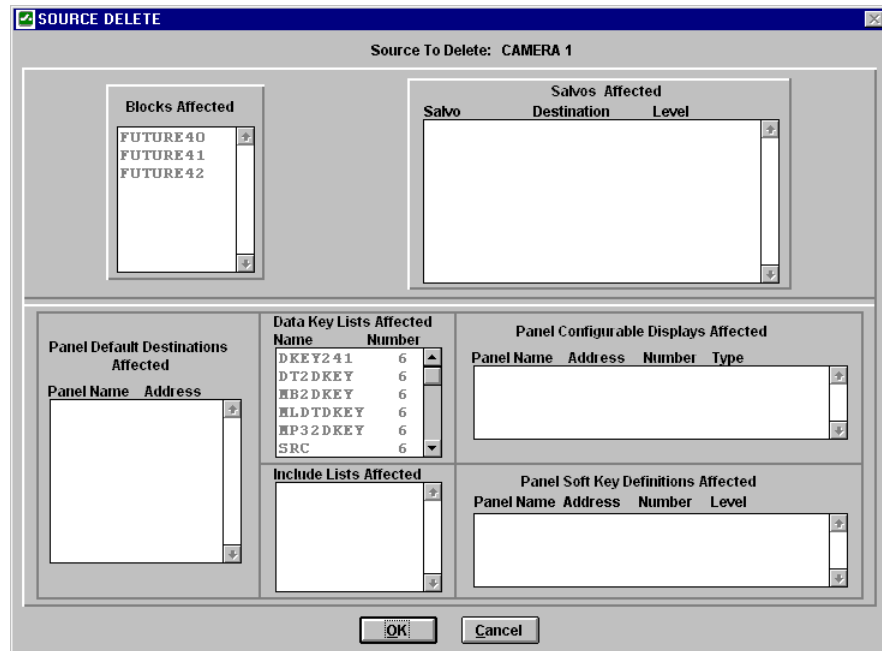


Figure 28 Source Delete Window

The SOURCE DELETE window displays all items that may be affected by the deletion of a source. Deleting a source results in the following:

1. The removal of any blocks affected by the deletion of the source
2. The deletion of any salvo entries that contain the source
3. The control panel default destinations are unaffected
4. Entries in any data key lists or include lists that use the source are deleted
5. Configurable displays are only impacted by destinations so they are unaffected
6. Any control panel soft key definitions defined as the source are deleted

Destination

Open the **Configuration** menu and select **Destination** to display the DESTINATION window (Figure 29). This will allow you to add, edit, and delete destinations. The maximum number of destinations allowed is shown in Table 1 on page 1.

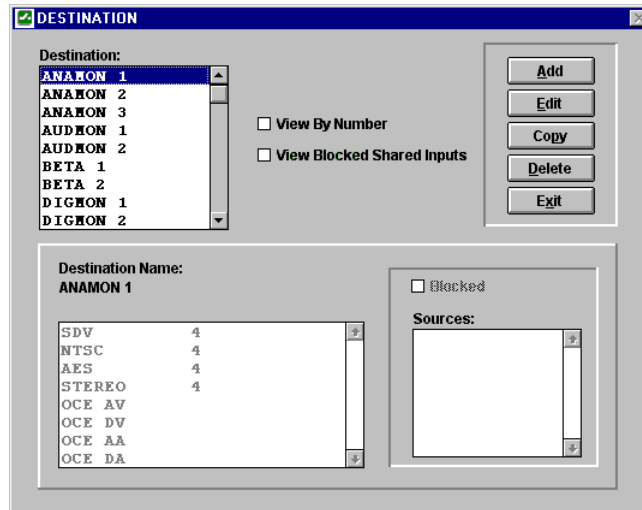


Figure 29 Destination Window

NOTE: If you are using CPU Link Protocol 1, you may wish to enable **View By Number** to display the destination number assigned to each destination. These numbers will be shown on the left side of the **Destination** list box.

When configuring a switching system, it may be desirable to use source blocking to restrict the switching of certain logical inputs. This may be done while configuring either sources or destinations.

Since a blocked source may contain a logical input that is shared (used by more than one source), care should be taken to ensure that all sources using the logical input are blocked from the destination to be protected.

Check the View Blocked Shared Inputs check box to display the BLOCKED SHARED INPUTS window (Figure 24). This window will only be displayed if at least one source block exists. The blocking status of shared inputs will be indicated by one of three messages displayed in red under the **Blocked Sources** list box

Selected Blocked Source Has No Shared Inputs: No shared inputs exist for the source selected.

All Shared Inputs of Selected Source Are Blocked: One or more shared inputs exist and the destination has been protected by blocking every source using any of the shared inputs.

Block Conflict Exists: All Shared Inputs of Selected Source Are Not Blocked: One or more shared inputs exist and the destination may not be adequately protected. At least one source using a restricted input has not been blocked from the destination.

Destination Names

Destination names:

1. Shall be created using only the following characters:

Upper case letters A through Z

Lower case letters a through z if enabled in the control system software

Numbers 0 through 9

The following special characters: space (), hyphen-minus (-), exclamation mark (!), ampersand (&), plus sign (+), equals sign (=), commercial at (@), and low line (_)

2. Shall contain a minimum of one, and a maximum of eight characters.
3. Shall not begin or end with a space.
4. Shall be unique in the universe of destination and reentry names.

Due to a screen font limitation, the low line character (_) will be represented on-screen by Win3500Plus as the space character (). It will, however, be correctly displayed on panels as the low line character (_).

Adding Destinations

To add a destination:

1. Click the **Add** button in the DESTINATION window to open the DESTINATION CONFIGURATION window (Figure 30).
2. Enter the **Destination Name**.
3. Use the **Move** and **Remove** buttons to build the **Selected Levels** list using levels associated with the first **Output Number** to be used.
4. Select the first **Output Number** (logical output, not physical output).

NOTE: Selecting **Output Number** “0” for any level will result in that level being omitted from the destination being configured.

5. Tab out of the **Output Number** list box or click on another field to update the **Destination Definition** list box.
6. Repeat steps 4 through 6 for all **Output Numbers** being used.
7. Select the **Block** radio button to enable the source block section. Use the **Move** and **Remove** buttons to build the **Blocked Sources** list.
8. Verify that all information shown in the **Destination Definition** box is correct and then click the **OK** button to close the DESTINATION CONFIGURATION window.

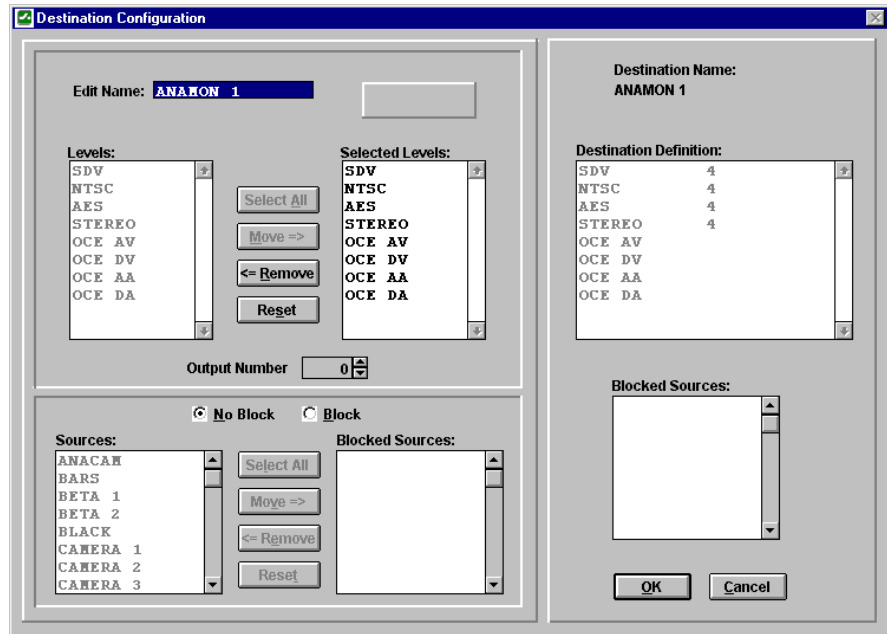


Figure 30 Destination Configuration Window

To modify an existing destination, select the destination to be changed and click on the **Edit** button. This will open the DESTINATION CONFIGURATION window (Figure 30) where any desired changes may be made.

To create a destination based on an existing one, select the existing destination and click on the **Copy** button. This will open the DESTINATION CONFIGURATION window (Figure 30). When this window opens, select a new destination name, and change the displayed destination information as required.

Deleting Destinations

Choosing to delete a destination on a fully configured system may have a significant impact on all items with which the destination is associated. Under these circumstances, selecting **Delete** will open the DESTINATION DELETE window (Figure 31) which displays all of the potentially impacted items. If there are no impacted items, such as is the case with a new configuration, the CONFIRM DELETE window will be displayed instead.

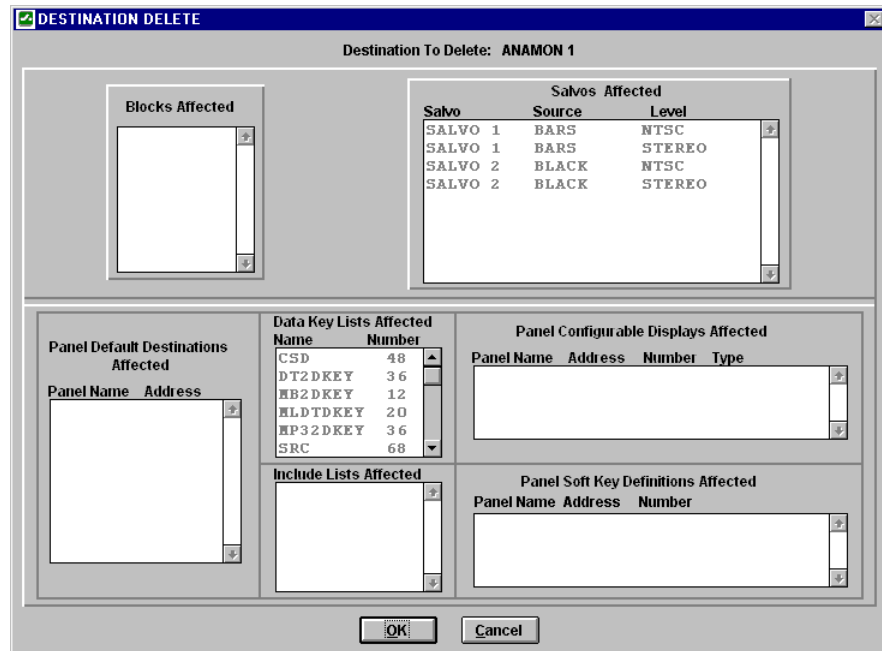


Figure 31 Destination Delete Window

The DESTINATION DELETE window displays all items that may be affected by the deletion of a destination. Deleting a destination results in the following:

1. The removal of any blocks affected by the destination
2. The deletion of any salvo entries that contain the destination
3. The blanking out of the default destination of any control panels using the destination as their default
4. The deletion of entries in any Data Key Lists or Include Lists that use the destination
5. Any panels with configurable displays (i.e. RCP-STAT panels) containing the destination will have the display blanked out
6. Any panels with soft keys defined as the destination will have the soft key definition deleted

Reentry

Open the **Configuration** menu and select **Reentry** to display the REENTRY window (Figure 32). This will allow you to add, edit, and delete reentries. The maximum number of reentries allowed is shown in Table 1 on page 1.

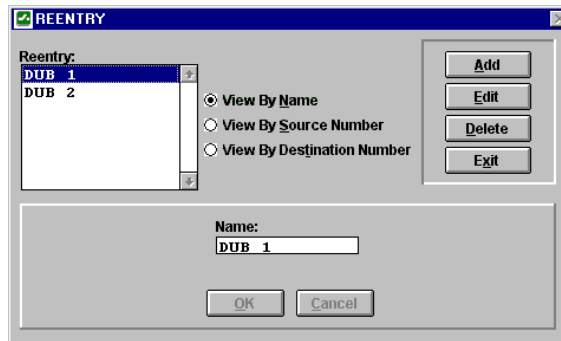


Figure 32 Reentry Window

NOTE: If you are using CPU Link Protocol 1, you may wish to enable **View By Source Number** or **View By Destination Number** to display source or destination numbers. These numbers will be shown on the left side of the **Reentry** list box.

A reentry is an entity which exists as both a source and destination at the same time, whose function is to facilitate switching a single source to multiple destinations, with a single logical switch.

Example (see Figure 33): Assume there exists source SRC1 and destinations DST1, DST2, and DST3. Reentry REENT1 is created and switched to the three destinations. With a single logical switch, SRC1 can now be switched to REENT1 and the signal will arrive at all three destinations at the same time.

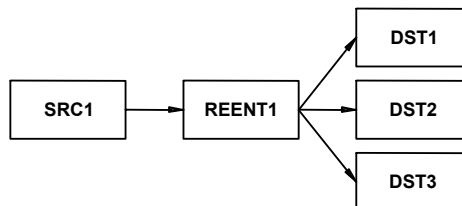


Figure 33 A Typical Reentry

Reentry Names

Reentry names:

1. Shall be created using only the following characters:

Upper case letters A through Z

Lower case letters a through z if enabled in the control system software

Numbers 0 through 9

The following special characters: space (), hyphen-minus (-), exclamation mark (!), ampersand (&), plus sign (+), equals sign (=), commercial at (@), and low line (_)

2. Shall contain a minimum of one, and a maximum of eight characters.
3. Shall not begin or end with a space.
4. Shall be unique in the universe of source, destination, and reentry names.

Due to a screen font limitation, the low line character (_) will be represented on-screen by Win3500Plus as the space character (). It will, however, be correctly displayed on panels as the low line character (_).

Adding Reentries

To add a reentry:

1. Click the **Add** button.
2. Enter the **Reentry Name**.
3. Click the **OK** button.

NOTE: Since a reentry serves as both a source and a destination, its name can not duplicate that of any existing source or destination.

Deleting Reentries

Choosing to delete a reentry on a fully configured system may have a significant impact on all items with which the reentry is associated. Under these circumstances, selecting **Delete** will open the REENTRY DELETE window (Figure 34) which displays all of the potentially impacted items. If there are no impacted items, such as is the case with a new configuration, the CONFIRM DELETE window will be displayed instead.

The REENTRY DELETE window displays the reentry to be deleted and lists all items that may be affected by its deletion. The window is titled "REENTRY DELETE" and shows "Reentry To Delete: DUB 1".

Salvos Affected			
Salvo	Destination	Source	Level

Data Key Lists Affected		
Name	Number	Type
CSD	3 6	SRC

Panel Default Destinations Affected	
Panel Name	Address

Panel Configurable Displays Affected			
Panel Name	Address	Number	Type

Include Lists Affected	
Name	Type

Panel Soft Key Definitions Affected				
Panel Name	Address	Number	Type	Level

OK Cancel

Figure 34 Reentry Delete Window

The REENTRY DELETE window displays all items that may be affected by the deletion of a reentry. Deleting a reentry results in the following:

1. The deletion of any salvo entries that contain the reentry

2. The blanking out of the default destination of any control panels using the reentry as their default
3. The deletion of entries in any Data Key Lists or Include Lists that use the reentry as a source or destination
4. Any panels with configurable displays (i.e. RCP-STAT panels) containing the reentry will have the display blanked out
5. Any panels with soft keys defined as the reentry as a source or destination will have the soft key definition deleted

Category

Open the **Configuration** menu and select **Category** to display the CATEGORY window (Figure 35). This will allow you to add, edit, and delete categories. The maximum number of categories allowed is shown in Table 1 on page 1.

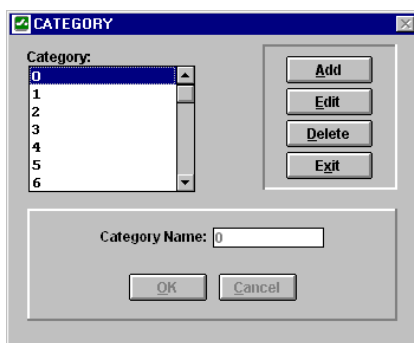


Figure 35 Category Window

A category is an entity assigned to a panel key that may be used alone, or with other categories, to select a source, destination, or reentry.

Category Names

Category names:

1. Shall be created using only the following characters:
 - Upper case letters A through Z
 - Lower case letters a through z if enabled in the control system software
 - Numbers 0 through 9
 - The following special characters: space (), hyphen-minus (-), exclamation mark (!), ampersand (&), plus sign (+), equals sign (=), commercial at (@), and low line (_)
2. Shall contain a minimum of one, and a maximum of eight characters.
3. May begin with a space, end with a space, have embedded spaces, and consist of a single space. All spaces other than embedded spaces shall be entered by using the tilde (~) key instead of the space bar.
4. Shall be unique in the universe of category names.

NOTE: Due to a screen font limitation, the low line character (_) will be represented on-screen by Win3500Plus as the space character (). It will, however, be correctly displayed on panels as the low line character (_).

Adding Categories

To add a category:

1. Click the **Add** button.
2. Enter the **Category Name**.
3. Click the **OK** button.

Editing Categories

If categories were used when creating source, destination, or reentry names, editing the category name used will have no effect on the source, destination, or reentry name.

Deleting Categories

If any data key lists use the category being deleted, selecting Delete will open the CATEGORY DELETE window (Figure 36), which displays the affected data key lists. If there are no impacted items, such as is the case with a new configuration, the CONFIRM DELETE window will be displayed instead.

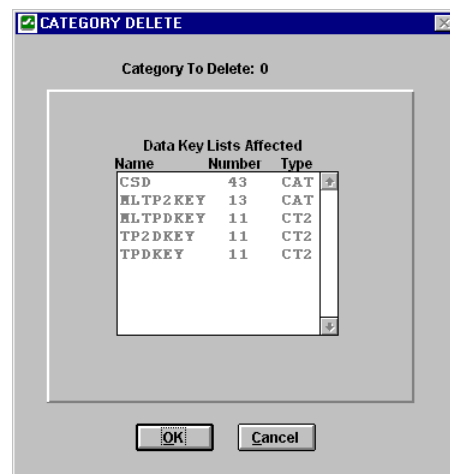


Figure 36 Category Delete Window

Index

Beginning with v3.0, indices are no longer used

Sync Reference

Open the **Configuration** menu and select **Sync Reference** to display the SYNC REFERENCE window (Figure 37). This will allow you to add, edit, and delete sync references.

NOTE: An RM5 device may only have one sync reference. A PRC device may have a maximum of two sync references.

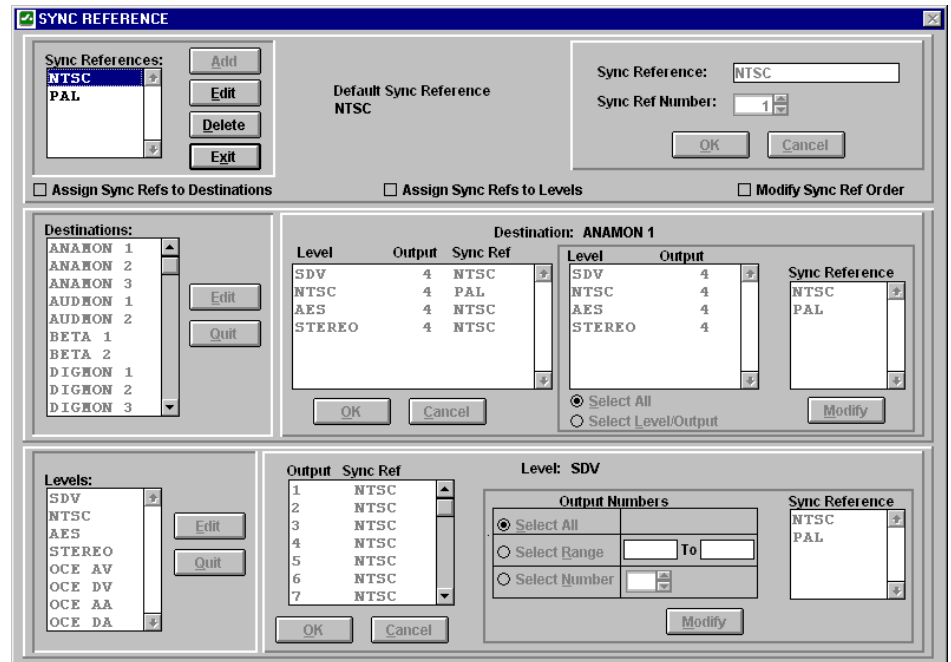


Figure 37 Sync Reference Window

Sync Reference is a reference signal used to ensure that switching occurs in the vertical interval of a video signal.

To add a sync reference:

1. Click the **Add** button.
2. Enter the **Sync Reference** name. Sync Reference names are one to eight characters in length and are constructed using uppercase letters, numbers, and spaces. The first character must be a letter.
3. Select the **Sync Ref Number**. This will be “2” because the default sync reference is “1”.
3. Click the **OK** button.
4. Click the Exit button to close the SYNC REFERENCE window.

Assign Sync References to Destinations

To assign a sync reference to a destination:

1. Select the **Assign Sync Refs to Destinations** check box.
2. Select the destination from the **Destinations** list box.

3. Click the **Edit** button.
4. Select the level(s) to be affected:
 - a) To assign the sync reference to all levels, select the **Select All** radio button
 - b) To assign the sync reference to a specific level, select the **Select Level/Output** radio button and then select the **Level**.
5. Select the **Sync Reference**.
6. Click the **Modify** button.
7. Repeat steps 4 through 6 until all levels have been changed.
8. Click the **OK** button.
9. Click the **Quit** button.
10. Click the **Exit** button to close the SYNC REFERENCE window.

Assign Sync References to Levels

To assign a sync reference to a level:

1. Select the **Assign Sync Refs to Levels** check box.
2. Select the level from the **Level** list box.
3. Click the **Edit** button.
4. Select the output number(s) on this level to be affected:
 - a) To assign the sync reference to all outputs, select the **Select All** radio button
 - b) To assign the sync reference to a range of outputs, select the **Select Range** radio button and then fill in the range boxes.
 - c) To assign the sync reference to a specific output, select the **Select Number** radio button and then select the output number.
5. Select the **Sync Reference**.
6. Click the **Modify** button.
7. Repeat steps 4 through 6 until all outputs have been changed.
8. Click the **OK** button.
9. Click the **Quit** button.
10. Click the **Exit** button to close the SYNC REFERENCE window.

Modify Sync Reference Order

The default sync reference is the one which is designated sync reference number 1. Modifying the sync reference order has the effect of swapping the sync reference numbers for the two sync references. If only one sync reference exists, this option will not be available.

To modify the sync reference order:

1. Select the **Modify Sync Ref Order** check box.
2. Click the **Exit** button to close the SYNC REFERENCE window.

Salvo

Open the **Configuration** menu and select **Salvo** to display the SALVO window (Figure 38). This will allow you to add, edit, and delete salvos. The maximum number of reentries allowed is shown in Table 1 on page 1.

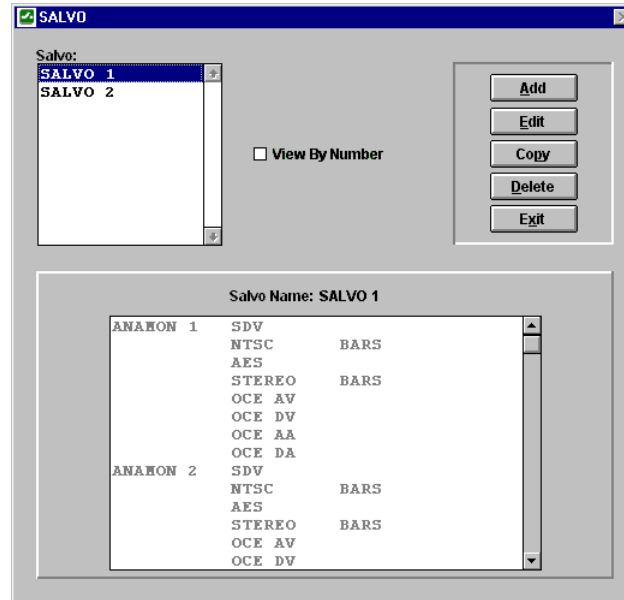


Figure 38 Salvo Window

NOTE: If you are using CPU Link Protocol 1, you may wish to enable **View By Number** to display salvo numbers. These numbers will be shown on the left side of the **Salvo** list box.

A salvo is a group of predefined logical switches taken at the same time. All switches in a salvo are taken within the same vertical interval.

To add a salvo:

1. Click the **Add** button in the SALVO window to open the SALVO CONFIGURATION window (Figure 39).
2. Enter the salvo name in the **Salvo Name** box. Salvo names are one to eight characters in length and are constructed using uppercase letters, numbers, and spaces. The first character must be a letter.
3. Click the **Add** button.
4. Select the **Destination**.
5. Select the **Levels**.
6. Select the **Source**.
7. Click the **Modify** button.
8. Repeat steps 3 through 7 for each salvo entry.
9. Click the OK button to close the SALVO CONFIGURATION window.

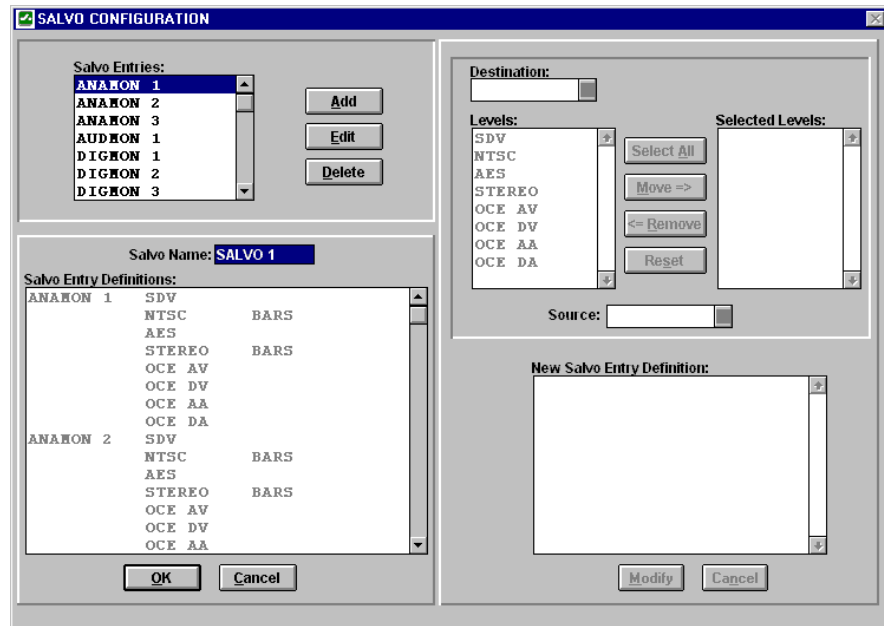


Figure 39 Salvo Configuration Window

To modify an existing salvo, select the salvo to be changed and click on the **Edit** button. This will open the SALVO CONFIGURATION window (Figure 39) where any desired changes may be made.

To create a salvo based on an existing one, select the existing salvo and click on the **Copy** button. This will open the SALVO CONFIGURATION window (Figure 39). When this window opens, select a new salvo name, and change the displayed salvo information as required.

Deleting a Salvo

Choosing to delete a salvo on a fully configured system may have a significant impact on all items with which the salvo is associated. Under these circumstances, selecting **Delete** will open the SALVO DELETE window (Figure 40) which displays all of the potentially impacted items. If there are no impacted items, such as is the case with a new configuration, the CONFIRM DELETE window will be displayed instead.

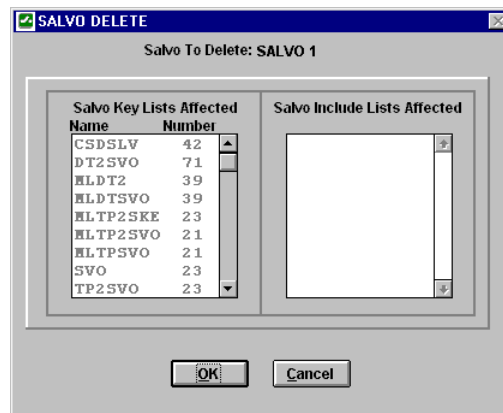


Figure 40 Salvo Delete Window

The SALVO DELETE window displays all items that may be affected by the deletion of a salvo. Deleting a salvo results in the following:

1. The deletion of the entries in any Salvo Key Lists that use the selected salvo
2. The deletion of any entries in Salvo Include Lists that use the selected salvo

Panel

Open the **Configuration** menu and select **Panel** to display the PANEL window (Figure 41). This will allow you to add, edit, and delete control panels. The maximum number of control panels allowed is shown in Table 1 on page 1.

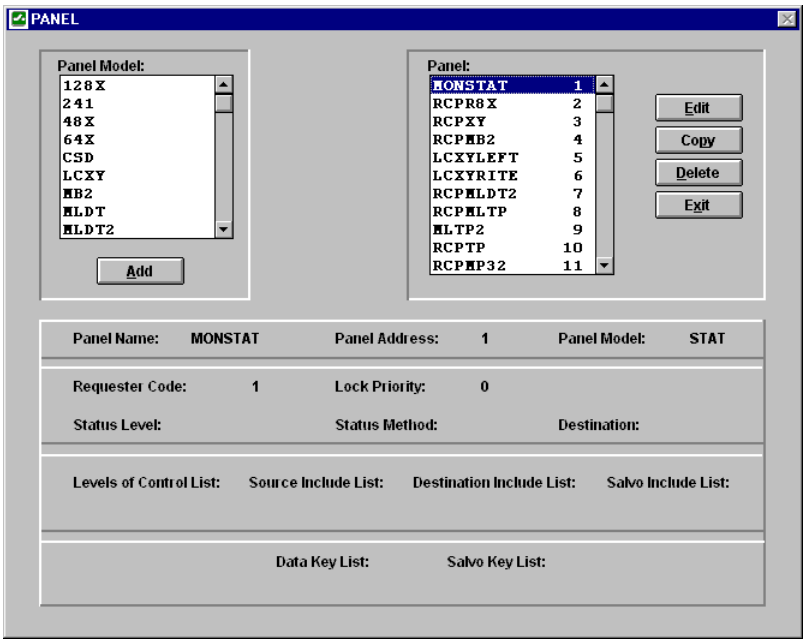


Figure 41 Panel Window

To add a panel:

1. Select the **Panel Model** to be added.
2. Click the **Add** button in the PANEL window to open the PANEL CONFIGURATION window (Figure 42). Each PESA control panel has a custom PANEL CONFIGURATION window. Only those configurable items applicable to the chosen panel will be displayed in the window. For a panel-by-panel breakdown of configurable items, see the Control Panel Configurable Items list (Table 2 on page 58). Each configurable item is explained in detail below.
3. Configure the panel.
4. Click the **OK** button to close the PANEL CONFIGURATION window.

Figure 42 Panel Configuration Window (Typical)

Panel	Panel Name	Panel Address	Requester Code	Lock Priority	Status Level	Status Method	Destination	Levels Of Control List	Source Include List	Destination Include List	Salvo Include List	Data Key List	Salvo Key List	Soft Keys	Displays
128X	X	X	X	X	X	X	X	X				X			
241	X	X	X	X	X	X	X	X				X			
48X	X	X	X	X	X	X	X	X				X			
64X	X	X	X	X	X	X	X	X				X			
CSD	X	X	X	X	X	X	X	X	X	X	X	X	X	X	
LCXY	X	X	X	X	X	X	X	X	X	X					
MB2	X	X	X	X	X	X		X	X	X	X	X		X	
MLDT	X	X	X	X	X	X	X	X	X	X	X	X	X	X	
MLDT2	X	X	X	X	X	X	X	X	X	X	X	X	X	X	
MLTP	X	X	X	X	X	X	X	X	X	X	X	X	X	X	
MLTP2	X	X	X	X	X	X	X	X	X	X	X	X	X	X	
MP32	X	X	X	X	X	X		X				X			
PVPG	X	X	X	X	X	X			X			X		X	
STAT	X	X	X	X											X
TP	X	X	X	X	X	X	X	X	X	X	X	X	X	X	
XY	X	X	X	X	X	X	X	X	X	X	X	X	X	X	

Table 2 Control Panel Configurable Items

Panel Name

Because a panel is identified by its address, the assignment of a panel name is optional. If used, panel names are one to eight characters in length and are constructed using uppercase letters, numbers, and spaces. The first character must be a letter.

Panel Address

Every control panel has DIP switches on the back. These switches are used to set a unique address for each panel in a switching system. The acceptable range of addresses is shown in Table 1 on page 1.

Requester Code

The requester code is used with the lock priority to determine if a lock or protect can be removed. When a lock or protect has been assigned by a panel (or serial

communications port), it can only be removed by another panel (or port) with a higher lock priority or with the same lock priority and same requester code.

Requester codes not explicitly defined automatically default to the panel address. The acceptable range of requester codes is shown in Table 1 on page 1.

Lock Priority

The lock priority is used with the requester code to determine if a lock or protect can be removed. When a lock or protect has been assigned by a panel or port, it can only be removed by another panel or port with a higher lock priority, or with the same lock priority and same requester code. The lower the lock priority number, the higher the priority.

Panel lock priorities not explicitly defined automatically default to “0” which gives absolute authority to clear any lock or protect on the system. The acceptable range of lock priorities is shown in Table 1 on page 1.

Status Level

Click the **Status Level** button to open the STATUS LEVEL window (Figure 43).

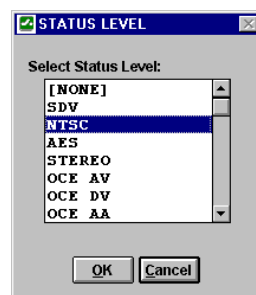


Figure 43 Status Level Window

One function of the LCD display on a panel is to show which source is currently switched to a selected destination. This is known as destination status. Although more than one source can be switched to a single destination (limited to one source per level), the status display can only show one source at a time. When the panel is in all levels mode (ALL LEVS), Status Level is used to designate a default level to be used when displaying status. Only the source on this default level will be displayed.

Status Method

Click the **Status Method** button to open the STATUS METHOD window (Figure 44).

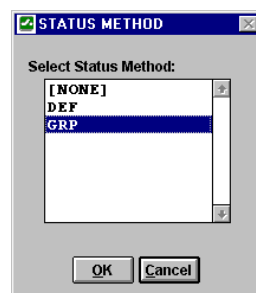


Figure 44 Status Method Window

When a panel is in all levels mode (ALL LEVS), the status shown will be the source on the Status Level assigned to that panel. If the destination is not defined on the Status Level, **Status Method** is used to control the resulting display:

If **DEF** (Default Method) is selected, NO XXXXX will be displayed where XXXXX is the Status Level assigned to the panel.

If **GRP** (Group Method) is selected, the controller will examine every level sequentially, starting with the level designated as Level Order 1. The source switched on the first level found where the destination is defined, will be displayed as the destination status.

Destination

Click the **Destination** button to open the DEFAULT DESTINATION window (Figure 45).

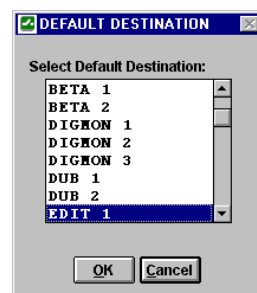


Figure 45 Default Destination Window

Select the default destination for which status will be displayed when power is applied to a panel, or when a new configuration is downloaded to the controller. Although not mandatory, it is recommended that a default destination be selected.

The panel will have control over the destination selected here, even if it is not included in the associated destination include list.

Levels of Control List

Click the **Levels Of Control List** button to open the LEVELS OF CONTROL LIST window (Figure 46).

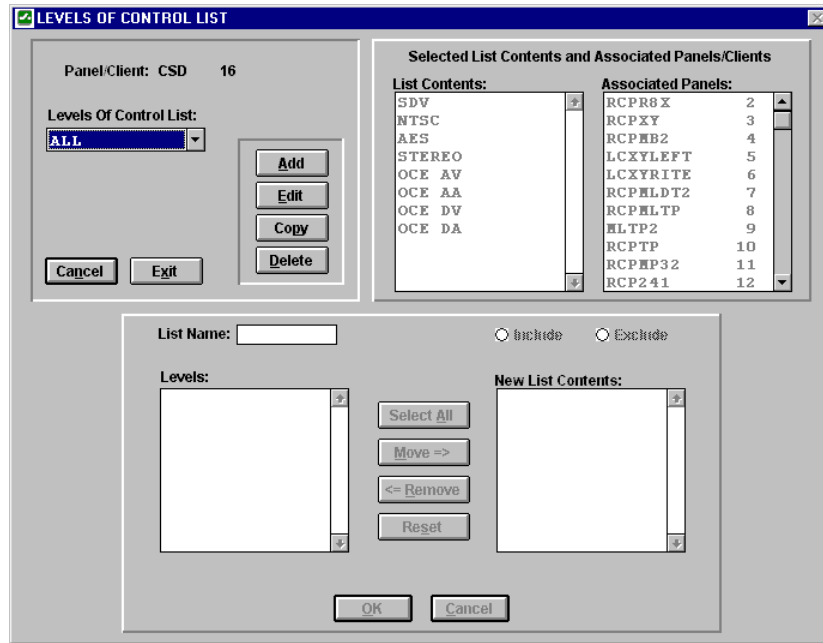


Figure 46 Levels of Control List Window

The Levels of Control List is a named list of all levels the panel (or remote client) is authorized to control. Two special lists come pre-configured: ALL and [NONE]. To configure a panel to have control over only some of the levels in a system, a named list must be created as follows:

1. Click the **Add** button.
2. Enter a **List Name**. Levels of Control List names are one to eight characters in length and are constructed using uppercase letters, numbers, and spaces. The first character must be a letter.
3. Click either the **Include** or **Exclude** radio button. **Include** will cause the list to be made of all levels shown in the **New List Contents** list box. **Exclude** will cause the list to be made of all levels *except* those shown in the **New List Contents** list box.
4. Use the **Move** and **Remove** buttons to create a list of levels in the **New List Contents** list box.
5. Click the **OK** button.
6. Click the **Exit** button.

The LEVELS OF CONTROL LIST window also shows all panels using level of control lists created for this type of panel, including **ALL** and **[NONE]**.

NOTE: A panel using the **[NONE]** levels of control list cannot be used to take switches.

Source Include List

Click the **Source Include List** button to open the SOURCE INCLUDE LIST window.

A source include list is a named list of the sources a specific control panel is authorized to control. A source include list may be shared by multiple panels.

The Source Include List is a named list of all sources the panel is authorized to control. It functions the same as the LEVELS OF CONTROL LIST window (Figure 46).

Destination Include List

Click the **Destination Include List** button to open the DESTINATION INCLUDE LIST window.

A destination include list is a named list of the destinations a specific control panel is authorized to control. A destination include list may be shared by multiple panels. The default destination assigned to a panel may be controlled even if it is not on the destination include list.

The Destination Include List is a named list of all destinations the panel is authorized to control. It functions the same as the LEVELS OF CONTROL LIST window (Figure 46).

Salvo Include List

Click the **Salvo Include List** button to open the SALVO INCLUDE LIST window.

A salvo include list is a named list of the salvos a specific control panel is authorized to control. A salvo include list may be shared by multiple panels.

The Salvo Include List is a named list of all salvos the panel is authorized to control. It functions the same as the LEVELS OF CONTROL LIST window (Figure 46).

Data Key List

Click the **Data Key List** button to open the DATA KEY LIST window (Figure 47).

Figure 47 Data Key List Window

A data key is a user configurable control panel key, whose assigned function is used when the panel is in any mode except Salvo Select Mode.

A data key list is a named list of the functions assigned to each data key on a panel. A data key list may be shared by multiple panels as long as they are the same type of panel. Different panel types may not use the same data key list.

A Data Key List is created as follows:

1. Click the **Add** button.
2. Enter a **Data Key List Name**. Data Key List names are one to eight characters in length and are constructed using uppercase letters, numbers, and spaces. The first character must be a letter.
3. Select the key **Number**, **Type** and **Value**.
4. Click the **Modify** button to transfer this information to the **Data Key List New Contents** list box.
5. Repeat steps 3 and 4 until all desired keys have been defined.
6. Click the **OK** button.
7. Click the **Exit** button.

The DATA KEY LIST window also shows all panels using data key lists created for this type of panel.

Salvo Key List

Click the **Salvo Key List** button to open the SALVO KEY LIST window (Figure 48).

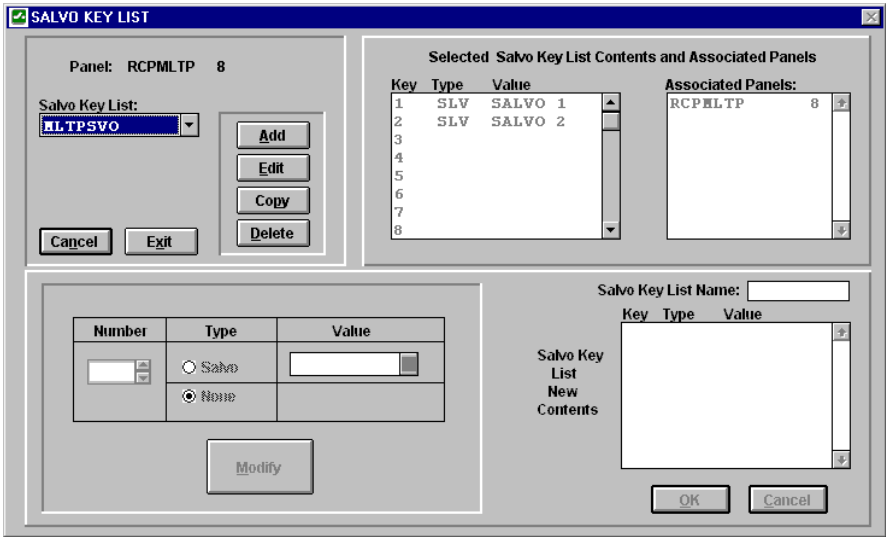


Figure 48 Salvo Key List

NOTE: A Salvo Key List can not be created until at least one salvo has been configured.

A salvo key is a user configurable control panel key, whose assigned function is used when the panel is in salvo select mode.

A salvo key list is a named list of the functions assigned to each salvo key on a panel. A salvo key list may be shared by multiple panels as long as they are the same type of panel. Different panel types may not use the same salvo key list.

A Salvo Key List is created as follows:

1. Click the **Add** button.
2. Enter a **Salvo Key List Name**. Salvo Key List names are one to eight characters in length and are constructed using uppercase letters, numbers, and spaces. The first character must be a letter.
3. Select the key **Number**, **Type** and **Value**.
4. Click the **Modify** button to transfer this information to the **Salvo Key List New Contents** list box.
5. Repeat steps 3 and 4 until all desired keys have been defined.
6. Click the **OK** button.
7. Click the **Exit** button.

The SALVO KEY LIST window also shows all panels using salvo key lists created for this type of panel.

Soft Keys

Click the **Soft Keys** button to open the SOFT KEY DEFINITION window (Figure 49).

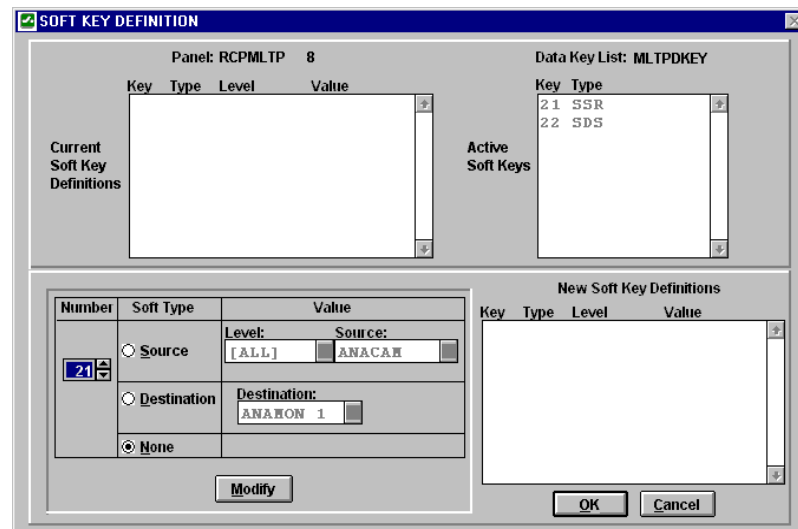


Figure 49 Soft Key Definition Window

NOTE: Soft Keys can not be configured until at least one soft key has been defined in the Data Key List assigned to the panel.

A Soft Key can be configured locally at the panel using Store Mode, or with Win3500Plus as follows:

1. Select the key **Number**, **Type** and **Value**.
2. Click the **Modify** button to transfer this information to the **New Soft Key Definitions** list box.
3. Repeat steps 1 and 2 until all desired keys have been defined.
4. Click the **OK** button.

View Keys

To display the VIEW KEYS window (Figure 50), click on the panel image at the top of the PANEL CONFIGURATION window.

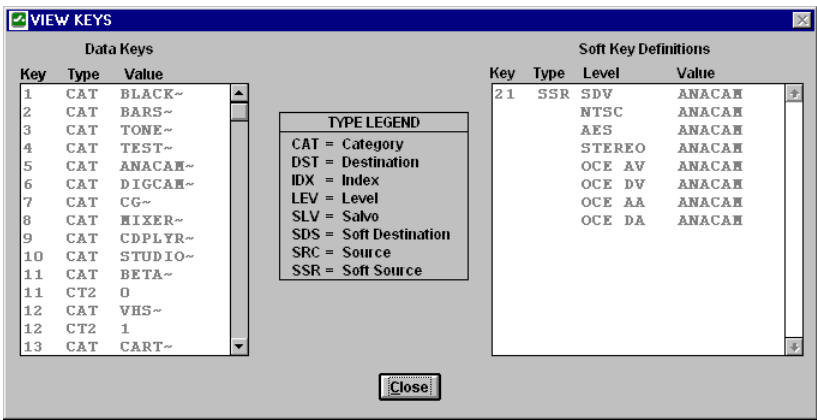


Figure 50 View Keys Window

The VIEW KEYS window contains a summary listing of all user configured data, salvo and soft keys.

Status Display Panels

A special type of control panel is the RCP-STAT status display panel which contains one or two user-configurable LED displays. When configuring one of these panels, the RCP-STAT PANEL CONFIGURATION window (Figure 51) will be displayed.

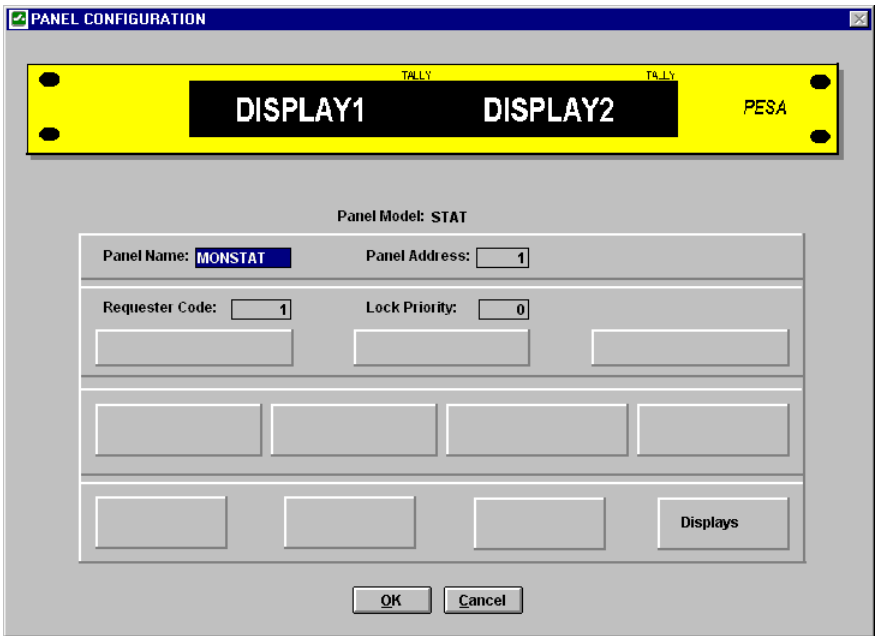


Figure 51 RCP-STAT Panel Configuration Window

For the RCP-STAT panel, **Panel Name**, **Panel Address**, **Requester Code**, and **Lock Priority** are configured in the same manner as any other panel. Click the **Displays** button to open the PANEL DISPLAY window (Figure 52).

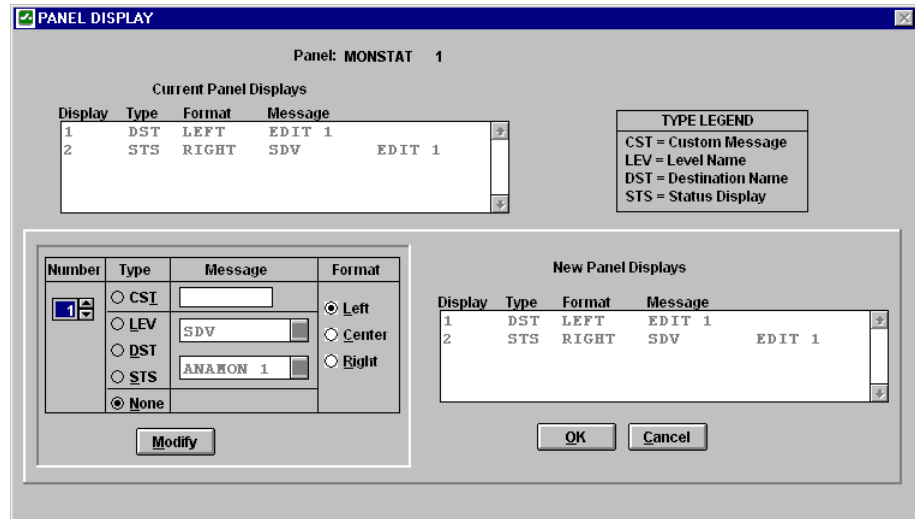


Figure 52 Panel Display Window

Configure the status display as follows:

1. Select the display **Number**, **Type**, **Message** and **Format**.
2. Click the **Modify** button to transfer this information to the **New Panel Displays** list box.
3. Repeat steps 1 and 2 if configuring a second display.
4. Click the **OK** button.

View Displays

To display the VIEW DISPLAYS window (Figure 53), click on the panel image at the top of the RCP-STAT PANEL CONFIGURATION window.

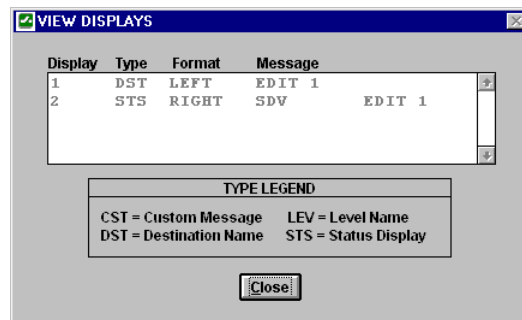


Figure 53 View Displays Window

The VIEW DISPLAYS window contains a summary listing of all user-configured displays on the selected panel.

CPU Link

Open the **Configuration** menu and select **CPU Link** to display the CPU LINK CONFIGURATION window (Figure 54).

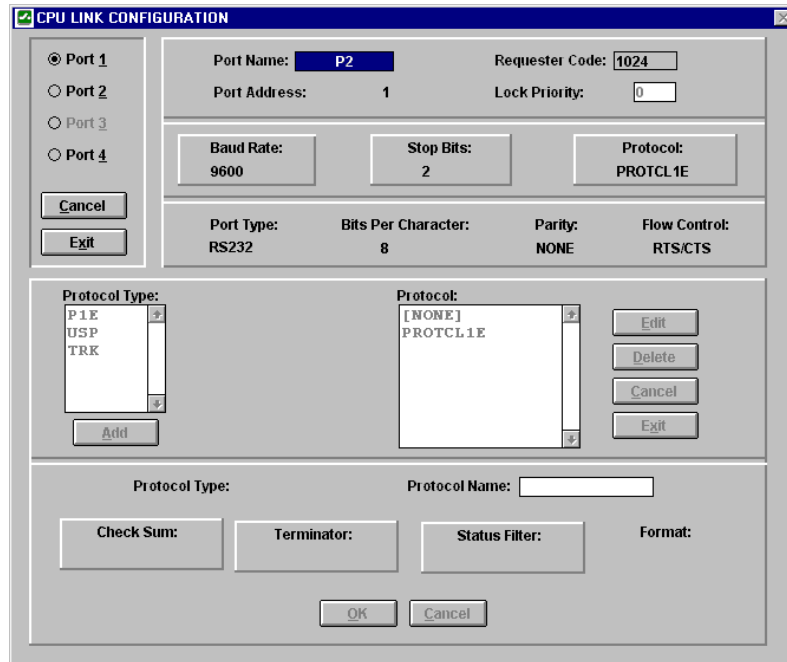


Figure 54 CPU Link Configuration Window

The CPU LINK CONFIGURATION window allows the user to configure the serial ports on the 3500Plus System Controller as follows:

Port Selection

Select the port to be configured for use with Win3500Plus:

Port 1 - The default CPU link port which is pre-configured to be used with Win3500Plus. The only items which may be changed on this port are the **Port Name** and the **Requester Code**.

Port 2 - Available for user configuration.

Port 3 - Not available. This port is the PRC Communications Port on the 3500Plus System Controller and may not be used for external control.

Port 4 - Available for user configuration.

Port Name

Because a port is identified by its address, the assignment of a port name is optional. If used, port names are one to eight characters in length and are constructed using uppercase letters, numbers, and spaces. The first character must be a letter.

Requester Code

The requester code is used with the lock priority to determine if a lock or protect can be removed. When a lock or protect has been assigned by a port (or panel), it can only be removed by another port (or panel) with a higher lock priority or with the same lock priority and same requester code.

Requester codes not explicitly defined automatically default to 1024, 1025, and 1027 for Ports 1, 2, and 4 respectively.

The acceptable range of requester codes is shown in Table 1 on page 1.

Lock Priority

The lock priority is used with the requester code to determine if a lock or protect can be removed. When a lock or protect has been assigned by a port or panel, it can only be removed by another port or panel with a higher lock priority, or with the same lock priority and same requester code. The lower the lock priority number, the higher the priority.

Port lock priorities not explicitly defined automatically default to “0” which gives absolute authority to clear any lock or protect on the system. The Lock Priority assigned to Port 1, which may not be changed, is “0”.

The acceptable range of lock priorities is shown in Table 1 on page 1.

Baud Rate

Click the **Baud Rate** button to open the BAUD RATE window (Figure 55).

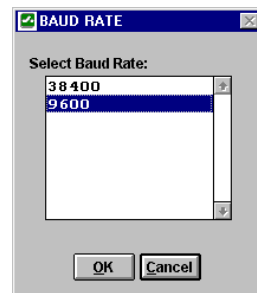


Figure 55 Baud Rate Window

Baud rate is the data transfer rate through the serial port measured in Baud (bits per second).

A baud rate of either 9600 or 38400 may be selected for Port 2 and Port 4. The Baud Rate assigned to Port 1, which may not be changed, is 9600.

Stop Bits

Click the **Stop Bits** button to open the STOP BITS window (Figure 56).

In asynchronous communications, a stop bit is a bit that indicates that a byte of data has just been transmitted. Every byte of data is preceded by a start bit and followed by a stop bit.

Either 1 or 2 stop bits may be selected for Port 2 and Port 4. The number of stop bits assigned to Port 1, which may not be changed, is 2.

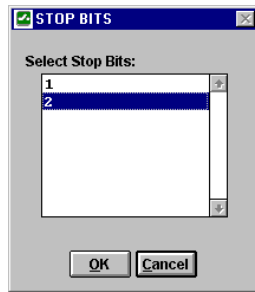


Figure 56 Stop Bits Window

Protocol

The protocol selected determines the format to be used when sending data through the serial ports on the 3500Plus System Controller. There are currently three protocols available for use:

1. CPU Link Protocol 1 with Extensions (P1E) (81-9062-0407-0)
2. Unsolicited Status Protocol (USP) (81-9062-0409-0)
3. Truck Link Protocol (TRK) (81-9062-0410-0) This protocol is designed to allow communication between two independent controllers. It provides an arbitration scheme that allows one controller to operate in a passive mode while the other controller is used to control all routing switchers and control panels. Full operation of Truck Link requires installation of the Truck Link hardware interface units.

These standard PESA protocols may be user customized if required by the interfacing hardware.

Port 1 is pre-configured to use only the protocol named PROTCL1E which is the unmodified version of P1E.

Port 2 may be configured to use either P1E or USP, in either unmodified or customized versions. TRK may not be used on Port 2.

Port 4 may be configured to use any of the available protocols, in either unmodified or customized versions.

A protocol is modified (if required) and assigned to a port as follows:

1. Select the port to be configured by clicking on the appropriate **Port** radio button.
2. Click the **Protocol** button.
3. Select the **Protocol Type**.
4. Click the **Add** button.
5. Enter the **Protocol Name**. Protocol names are one to eight characters in length and are constructed using uppercase letters, numbers, and spaces. The first character must be a letter.
6. Click the **Check Sum** button to open the CHECKSUM TYPE window (Figure 57).

A checksum determines how the validity of transmitted data will be confirmed. The three checksum types available are:

- a) NONE: No validity checking.

- b) PESA: Data validity is checked using PESA's standard method.
- c) HEX ASCII: Data validity is checked using a standard HEX-ASCII checksum.

7. Click the **Terminator** button to open the TERMINATOR window (Figure 58).

The terminator is the character(s) to be used to denote the end of a data packet or command string. The three terminators available are:

- a) CR: A carriage return.
 - b) LF: A line feed.
 - c) CL: A carriage return followed by a line feed.
8. Click the **Status Filter** button to open the STATUS FILTER window (Figure 59). This is only available for Unsolicited Status Protocol (USP).

Status filtering allows the user to filter the data sent through the port using USP. The nine filters available are:

- A - All Unsolicited Items
- C - Configuration Changes
- D - Dual Transition Changes (Dual 3500Plus Control Systems Only)
- E - Confidence Errors
- G - User Logon/Log Off
- L - Lock/Protect Changes
- P - Physical Switches
- S - Switch Change Requests
- U - User Account Changes

9. Click the **OK** button.
10. Click the **Exit** button.

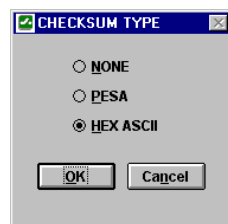


Figure 57 Checksum Type Window

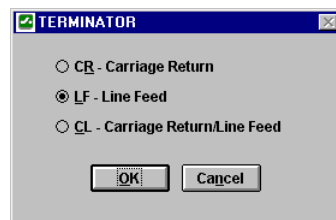


Figure 58 Terminator Window

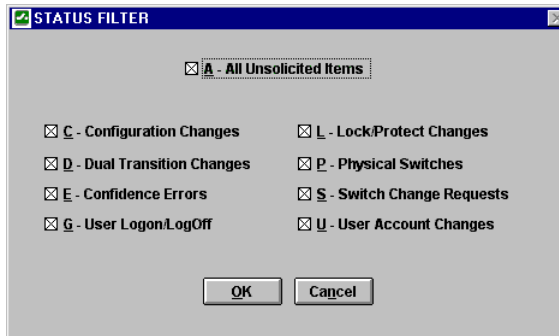


Figure 59 Status Filter Window

Remote Client

Open the **Configuration** menu and select **Remote Client** to display the REMOTE CLIENTS window (Figure 60).

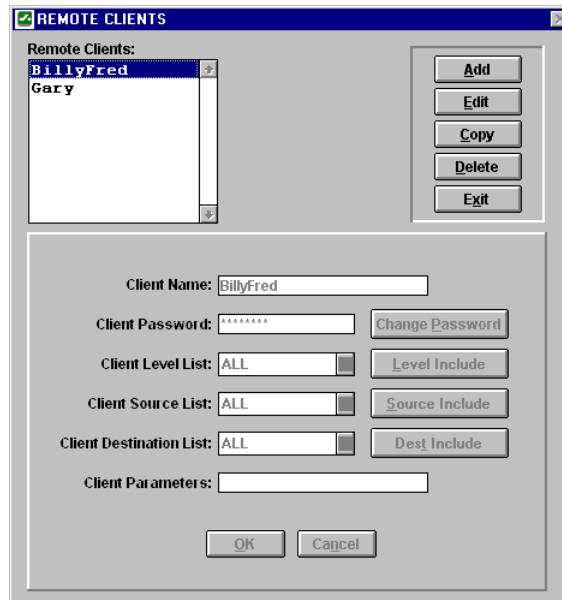


Figure 60 Remote Clients Window

The REMOTE CLIENTS window allows the user to configure Remote Client Names and Passwords. These are used by network accessible equipment such as the PESA e-Route system controller.

Client Name

A string of up to sixteen characters consisting of letters, numbers, and some symbols. A Remote Client Name must begin with a letter, and may not contain any spaces.

Symbols Permitted: - _ @ ! & + =

Client Password

A string of up to eight characters consisting of letters, numbers, and some symbols. A Remote Client Password may begin with either a number or a letter, and may not contain any spaces.

Symbols Permitted: : ; < = > ? @

Client Level List

The Levels of Control List is a named list of all levels the Remote Client is authorized to control. For more information, see “Levels of Control List” on page 60.

Client Source List

The Source Include List is a named list of all sources the Remote Client is authorized to control. For more information, see “Source Include List” on page 61.

Client Destination List

The Destination Include List is a named list of all destinations the Remote Client is authorized to control. For more information, see “Destination Include List” on page 62.

Client Parameters

Client Parameters are not currently used. Leave this field empty.

Chapter 8 – Diagnostics Menu

Introduction

The **Diagnostics** menu provides access to diagnostic and hardware reset operations.

NOTE: Prior to performing any diagnostic or reset function that affects the configuration or operation of the 3500Plus System Controller, you must be logged on to the controller and have the appropriate privileges assigned to your user account (if user accounts are used). For more information, see “Log On to Controller” on page 19 and “Create User Account” on page 12.

Physical Diagnostics

Open the **Diagnostics** menu and select **Physical Diagnostics** to display the CONFIDENCE AND READBACK STATUS window (Figure 61).

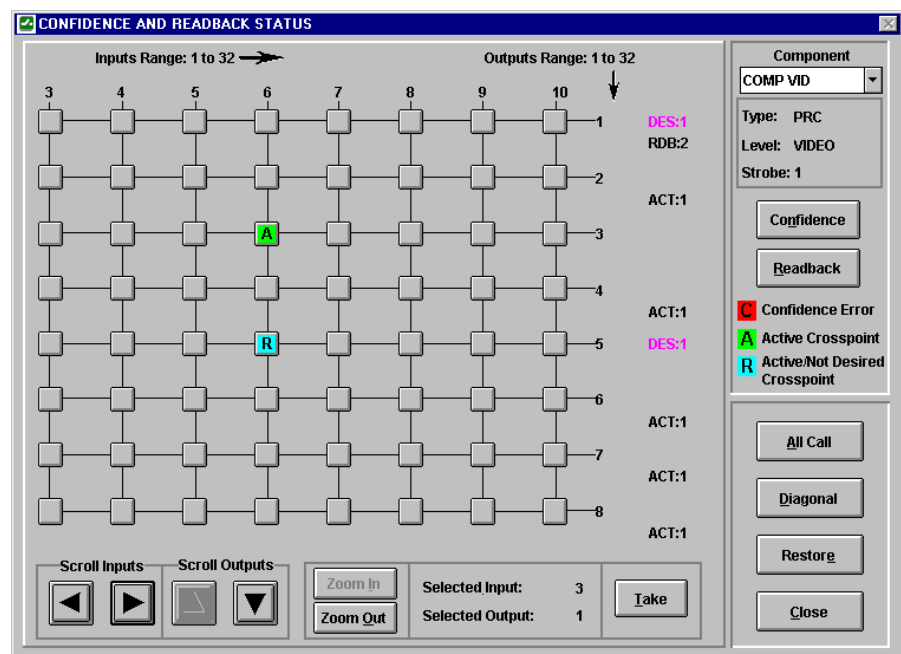


Figure 61 Confidence and Readback Status Window

The left side of this window is a map of the physical inputs and physical outputs of the selected component. Each small square represents one physical switch. Use the **Zoom** and **Scroll** controls to navigate around this map. You may also click on a physical switch and then select a **Zoom** button. The map will then automatically scroll to place the selected switch in the upper left corner and zoom in or out at the same time.

The selected physical switch will move to the upper left corner of the map and the inputs and outputs displayed are to the next smaller/larger resolution.

Click on the **Confidence** button to display the results of the most recent block check. Physical switches in blocks having a confidence error will be marked with a “C” and highlighted in red.

Click on the **Readback** button to display which physical switches are currently active as reported by the routing switcher. Active switches will be reported in one of two ways:

1. Physical switches which are reported active by the routing switcher, and are expected to be active by the configuration currently loaded in the 3500Plus System Controller, will be marked with an “A” and highlighted in Green.

If the map has been scrolled until the switch is no longer visible, the input will be indicated on the right side of the map by ACT:xx where xx is the input number.

2. Physical switches which are reported active by the routing switcher, but are expected to be inactive by the configuration currently loaded in the 3500Plus System Controller, will be marked with an “R” and highlighted in Blue.

On the right side of the switch map, the input desired by the controller will be indicated by DES:xx where xx is the desired input number.

If the map has been scrolled until the switch is no longer visible, the input reported by the routing switcher will be indicated on the right side of the map (under the DES:xx indicator) by RDB:xx where xx is the input number being read back by the routing switcher.

All Call

Click on the **All Call** button to open the ALL CALL window (Figure 62).

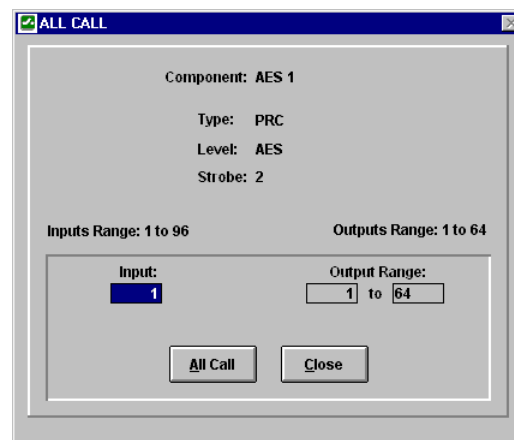


Figure 62 All Call Window

An all call is a diagnostic procedure that causes a single physical input to be switched to a range of physical outputs, for a specified component, with a single command.

Example (see Figure 63): Assume the existence of component RED spanning physical inputs 1 through 6 and physical outputs 1 through 6. All call can be used to switch physical input 3, to physical outputs 2 through 6, with a single command.

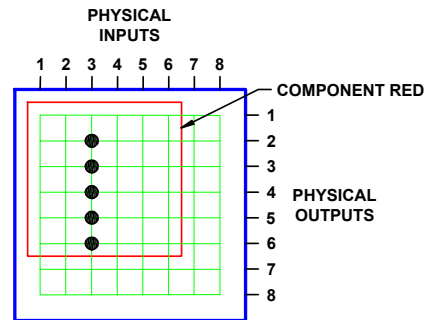


Figure 63 All Call

To perform an All Call on the selected component:

1. Enter the **Input** number.
2. Enter the **Output Range**.
3. Click the **All Call** button.

Diagonal

Click on the **Diagonal** button to open the DIAGONAL window (Figure 64).

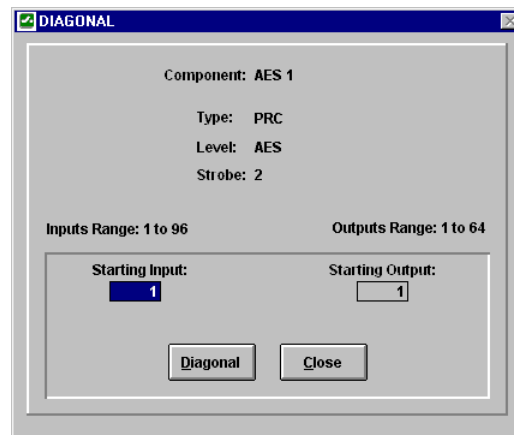


Figure 64 Diagonal Window

A diagonal is a diagnostic procedure that causes a range of physical inputs to be switched to a range of physical outputs, in a diagonal pattern starting from a specified coordinate and continuing until the either the inputs or outputs are exhausted, for a specified component, with a single command.

Example (see Figure 65): Assume the existence of component RED spanning physical inputs 1 through 6 and physical outputs 1 through 6. A diagonal with a starting input of 2 and a starting output of 1 would cause the following physical switches to be taken: (2,1), (3,2), (4,3), (5,4), and (6,5).

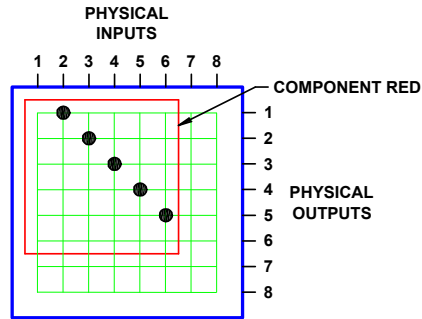


Figure 65 Diagonal

To perform a Diagonal on the selected component:

1. Enter the **Starting Input** number.
2. Enter the **Starting Output** number.
3. Click the **Diagonal** button.

Take

To switch a specific physical switch, click on the switch in the map, and then click the **Take** button.

Restore

To restore the routing switcher to its original state before any All Call, Diagonal, or Take commands were issued, click the **Restore** button.

NOTE: Unallocated outputs in the selected component will not be switched back to their original input.

Router Physical Mapping

Open the **Diagnostics** menu and select **Router Physical Mapping** to display the GROUP TO PHYSICAL MAPPING window (Figure 66).

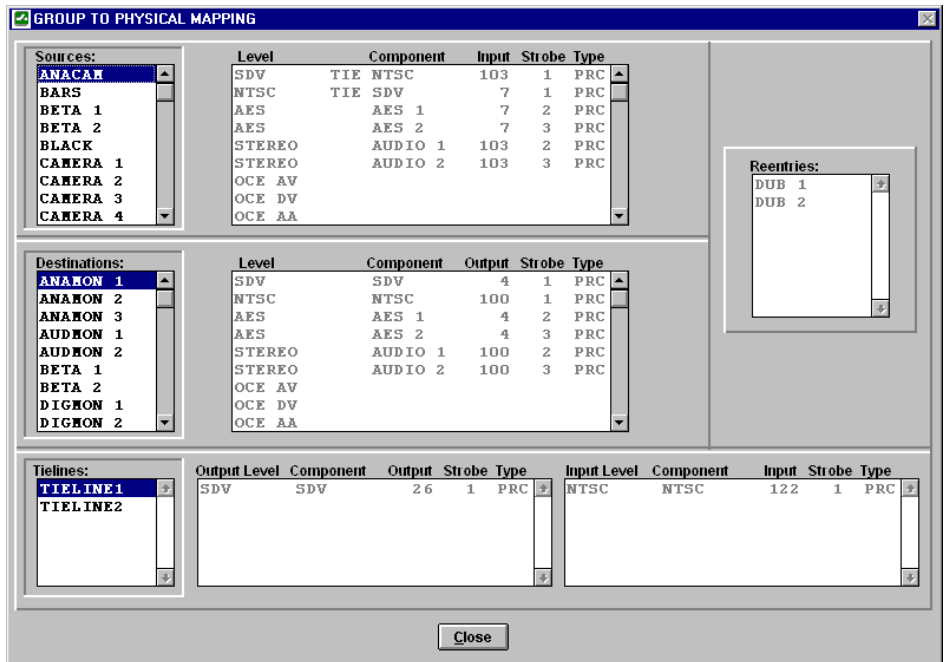


Figure 66 Group to Physical Mapping Window

The Group to Physical Mapping Window provides the user with a list of physical connections needed to make the system configuration functional.

CPU Link Test

To verify that the serial link between your PC and the 3500Plus System Controller is functioning correctly, open the **Diagnostics** menu and select **CPU Link Test** (this will test both cable and modem connections).

NOTE: When running Win3500Plus under Windows v3.1, the cursor will not change from an arrow to an hourglass. Allow this test to run for at least 30 seconds before assuming there is a problem.

Once the test is complete, one of two messages will be displayed:

Pass: Interfacing to PESA Controller 3500Plus Version: Vx.x

Fail: No response From CPU Link Device!:KUQ

For troubleshooting information, see ""**No response From CPU Link Device!:KUQ**" on page 82.

Clear Configuration Locks

In the rare event that a power failure, hardware malfunction, or other occurrence prevents a configuration upload or download from terminating in a normal manner, the configuration lock may latch in place. To manually clear a configuration lock, open the **Diagnostics** menu and select **Clear Configuration Locks**.

If the malfunction occurred while downloading a configuration to the controller (sometimes referred to as writer's lock), the controller will also be reset.

Block Check Enable/Disable

When troubleshooting system problems, it may occasionally be useful to turn block checking off. To do so, open the **Diagnostics** menu and select **Block Check Enable/Disable**. This will cause the current state to be reported and allow it to be toggled if desired.

Switcher Enable/Disable

When troubleshooting system problems, it may occasionally be useful to disable all routing switchers in the system. To do so, open the **Diagnostics** menu and select **Switcher Enable/Disable**. This will cause the current state to be reported and allow it to be toggled if desired.

Reset Controller

To reset the 3500Plus System Controller, open the **Diagnostics** menu and select **Reset Controller**.

Reset Panel

Open the **Diagnostics** menu and select **Reset Panel** to display the PANEL RESET window (Figure 67).

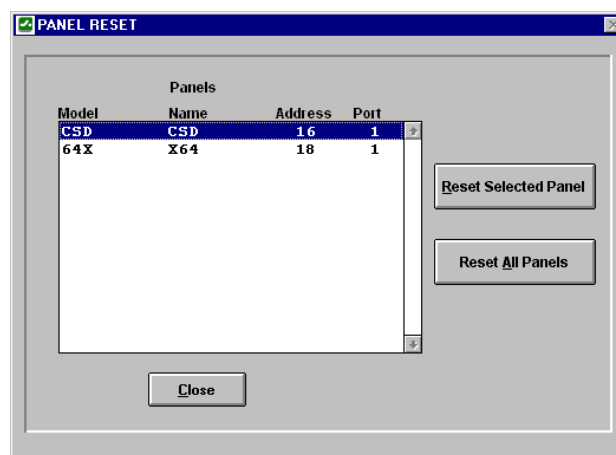


Figure 67 Panel Reset Window

All panels which are currently on-line may be reset individually, or together as a group. See “Panel Status” on page 27 for more information.

Import/Export Functions

A configuration may exist in two different formats:

1. A DBF configuration is a configuration stored as a .dbf style database. This is the format that Win3500Plus uses when storing a configuration on the PC.

2. An ASCII configuration is a configuration stored as an ASCII text file. Win3500Plus converts a configuration from DBF to ASCII when it is when uploaded from or downloaded to a 3500Plus System Controller.

The following four diagnostic functions are provided for advanced troubleshooting purposes when working with ASCII configurations. To access them, open the **Diagnostics** menu, select **Import/Export Functions**, and then the appropriate function.

1. **Export ASCII File to Controller.** This function is used to transfer an ASCII configuration from the PC to the 3500Plus System Controller.
2. **Import ASCII File to PC.** This function is used to import an ASCII configuration from the PC into Win3500Plus.
3. **Database Convert to ASCII File.** This function is used to export an ASCII configuration from Win3500Plus to the PC.
4. **Controller Config to ASCII File.** This function is used to transfer an ASCII configuration from the 3500Plus System Controller to the PC.

Chapter 9 – Troubleshooting

Introduction

This chapter provides basic troubleshooting information to help solve any problems encountered with Win3500Plus.

If the solution cannot be found here, please contact the PESA Customer Service Department at (256) 726-9222 or service@pesa.com, or visit the PESA web site at <http://www.pesa.com>.

Error Messages

Listed below are error messages and possible solutions for the problems they identify.

Component Offset Warning

"The Number of Level Inputs/Outputs + the Component Offset is Greater Than The Offset Defined for Component Type of the Following Components. CONTINUE?"

You have attempted to edit a level to increase the number of inputs or outputs beyond the maximum allowed.

A level may not be edited to increase the number of inputs or outputs such that the new number plus the component offset of any components associated with the edited level is greater than the maximum component offset for that component type (RM5 device v. PRC device). The offending components will be listed along with the error message.

Configuration Error

"A Level Must Exist Before a Component May Be Defined"

After you have configured at least one Level, you will be able to access this menu.

Configuration Warning

"Discrepancies exist between Configuration on Controller and Currently loaded Configuration on Win3500Plus: Configuration Contents Are Not The Same. Continue?"

This warning is given when the configuration in the PC differs from the configuration in the 3500Plus System Controller.

Controller Interface Authority

"You do not have the necessary privileges to access the controller. Access to controller denied."

One of the following has occurred:

1. You have attempted to log on to the 3500Plus System Controller with a password protected User Name and have entered the wrong password. If you are unable to enter the correct password, a user with password change privileges can provide you with a new password (see "User Account" on page 20).
2. You have attempted to perform an action that you are not authorized to perform. Check your User Account privileges (see "User Account" on page 20) and revise if necessary.

NOTE: If you have forgotten your system passwords, contact the PESA Customer Service Department at (256) 726-9222 or service@pesa.com.

CPU Link Message

"Error in Opening COM Port x (Invalid port specified)"

You have tried to select a serial port (COM Port x) on your PC which either does not exist or is connected to something other than the 3500Plus System Controller.

"No response From CPU Link Device!:KUQ"

The PC is not communicating with the 3500Plus Controller; check the following:

1. Verify that the 3500Plus System Controller Power On LED (green) and the Active LED (yellow) are on (in a system with dual controllers installed, only one controller will have the Active LED on). If these LEDs are not on, refer to the 3500Plus System Controller manual for troubleshooting information.
2. Verify that the serial cable is connected to the correct connector on both ends (see the 3500Plus System Controller manual for connection information).
3. Verify that the communication speed selected in Win3500Plus matches the speed selected by the DIP switch on the 3500Plus System Controller. The DIP switch is used to select a baud rate of either 9600 or 38400.

Database Conversion Error

"Invalid System Version For Conversion"

You have tried to use the Configuration Conversion Utility to update a configuration that has already been updated.

Duplicate Output Error

"The Outputs on the following Levels are assigned to other Destinations:"

While configuring a destination, you have attempted to use a logical output that is already in use by another destination. Shared outputs are not permitted.

Invalid Save Directory

"Configuration cannot be saved to Working Directory. Please choose another directory."

The Working Directory is the directory where Win3500Plus was installed. If you used the default settings of the installation program, this will be c:\win3500 in 16-bit versions of Windows and c:\program files\win3500 in 32-bit versions of Windows.

You may not save a Configuration to the Working Directory or any subdirectory of the Working Directory.

Panel Status Level Change Requirement

"A new Panel Status Level must be selected for the listed panels. Otherwise the panels will not transfer to the Controller."

The designation of a status level is a mandatory requirement for certain panel types. You have attempted to delete a level which is designated as the status level for one or more panels in the switching system. Before you will be allowed to delete the level, you must designate another level as the new status level for the affected panels.

Remote Modem Configuration

"Remote Modem Configuration Failed. Exit anyway?"

You have failed to transmit the modem initialization string to the Remote Modem because of one of the following reasons:

1. The Remote Modem is either not connected to your PC or is connected to the wrong Serial Port.
2. The Remote Modem is not plugged in or turned on.

Sync Ref Status Message

"Only the default sync ref, SYNC1, is defined. Sync Ref Status Screen will not be displayed."

Before the SYNC REFERENCE STATUS window can be displayed, additional Sync References must be configured. See "Sync Reference" on page 53.

Glossary of Terms

(Glossary Revised: 08 June 2001)

AES/EBU Audio

Informal name for a digital audio standard established jointly by the Audio Engineering Society and the European Broadcasting Union.

All Call

A diagnostic procedure that causes a single physical input to be switched to a range of physical outputs, for a specified component, with a single command.

Example: Assume the existence of component RED spanning physical inputs 1 through 6 and physical outputs 1 through 6. All call can be used to switch physical input 3 to physical outputs 2 through 6 with a single command.

See also: Diagonal.

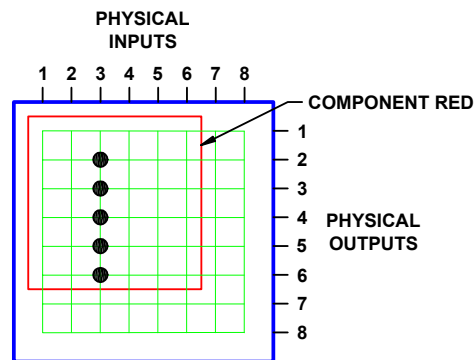


Figure 68. All Call

ANSI

American National Standards Institute.

Baud

The number of times a communication signal changes state (voltage, frequency, etc.) in one second.

Generally, only one bit of information is encoded in each change of state for signals operating below 300 baud. At these speeds, baud equals the number of bits transmitted per second.

At 300 baud and above, communications standards generally allow more than one bit to be encoded in each change of state. For example, modems operating at 1200 bits per second, and conforming to the Bell 212A standard, operate at 300 baud using a modulation technique called phase modulation that transmits four bits per baud. At these speeds, data transmission rates are usually expressed in bits per second (b/s) rather than baud.

Baud was originally a unit of telegraph signaling speed, set at one Morse code dot per second. It was proposed at the International Telegraph Conference of 1927, and named after French Engineer J.M.E. Baudot (1845-1903).

Black Burst

A composite color video signal that has sync, color burst, and black video. It is used to synchronize other video sources to the same sync and color information.

See also: House Sync.

Block

A group of contiguous crosspoints in a routing switcher that form the smallest unit on which confidence is checked.

Because of the nature of the circuits involved, individual crosspoints cannot be checked to see if they are operating correctly. Instead, the control circuitry shared by groups of crosspoints is monitored. These groups of crosspoints, called blocks, vary in size according to product type. Block size for RM5 routing switchers is 8 inputs by 2 outputs and block size for PRC routing switchers is 8 inputs by 8 outputs. If any block gives a confidence error, all crosspoints in that block are assumed to be non-functional.

Block Checking

The continuous, sequential monitoring of confidence for each block in a routing switcher.

Block checking occurs automatically and continuously but can be disabled for troubleshooting purposes.

Blocked Destination

See: Source Block.

Blocked Source

See: Source Block.

Breakaway Switch

A switch where multiple sources are switched to a single destination on multiple levels.

Example: Assume the existence of sources VTR1 and VTR2, and destination MON1, defined on levels VIDEO and AUDIO. If VTR1 is switched to MON1 on the VIDEO level, and VTR2 is switched to MON1 on the AUDIO level, a breakaway switch has been taken.

Table 3. Breakaway Switch

Destination	Source	
	Level: VIDEO	Level: AUDIO
MON1	VTR1	VTR2

See also: Follow Switch.

Category

Entities assigned to keys on remote control panels, and used to select sources, destinations, and reentries.

Example: The categories VTR, 1, 2, and 3 can be used to select the source names VTR1, VTR2, and VTR3.

Category names:

1. Shall be created using only the following characters:
 - Upper case letters A through Z
 - Lower case letters a through z if enabled in the control system software
 - Numbers 0 through 9
 - The following special characters: space (), hyphen-minus (-), exclamation mark (!), ampersand (&), plus sign (+), equals sign (=), commercial at (@), and low line (_)
2. Shall contain a minimum of one, and a maximum of eight characters.
3. May begin with a space, end with a space, have embedded spaces, and consist of a single space. All spaces other than embedded spaces shall be entered by using the tilde (~) key instead of the space bar.
4. Shall be unique in the universe of category names.

Due to a screen font limitation, the low line character (_) will be represented on-screen by Win3500Plus as the space character (). It will, however, be correctly displayed on panels as the low line character (_).

Chop

To rapidly switch two different video signals into a monitor or other piece of test equipment. This is done to compare some signal characteristic, usually for quality control.

Chop Rate

The parameter used to control the switching rate when chopping two signals. The signal switching rate is determined as follows:

$$\frac{\text{Video Frame Rate (frames/s)}}{\text{Chop Rate}} = \text{Signal Switching Rate (switches/s)}$$

Figure 69. Chop Rate

For example, a chop rate of 1 used with NTSC signals (30 Frames/Second) will cause the signals to be switched 30 times per second. A chop rate of 60 used with the same signals will cause them to be switched every two seconds.

Component

The most basic signal element that can be switched by a single crosspoint. For example, in RGB video, “Red”, “Green”, and “Blue” are components; in stereo audio, “Left” and “Right” are components.

In Matrix Space, components of like type are usually grouped together into rectangular matrices of crosspoints having contiguous inputs and outputs. These matrices are also referred to as components and are grouped together into levels.

Figure 70 shows a 2x2 RGB video level (VID) consisting of three components (RED, GRN, and BLU).

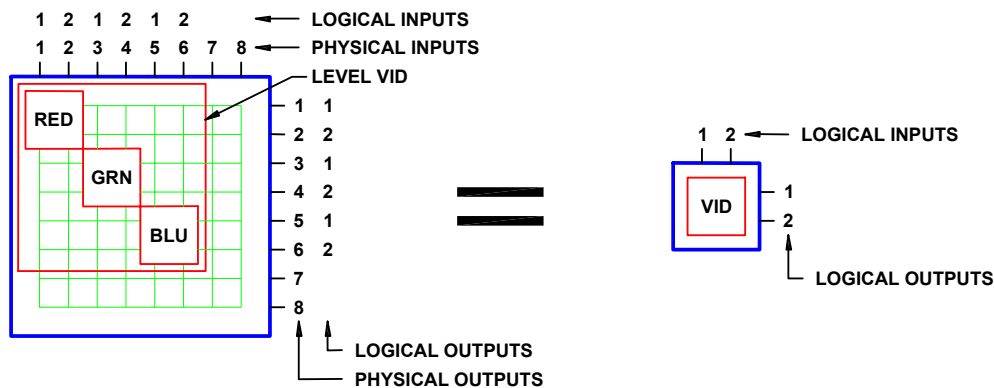


Figure 70. Component

As a general rule, users control the switching of levels, but component switching is handled automatically by the switching system. As shown in Figure 70, a user can specify a single logical switch, such as VID Input 1 to VID Output 2. This would result in the control system software taking three physical switches by activating crosspoints (1,2), (3,4), and (5,6).

Component names are one to eight characters in length and are constructed using uppercase letters, numbers, and spaces. The first character must be a letter.

Composite Video

A type of video signal that contains luminance, chrominance, blanking, and synchronizing information. NTSC, PAL, and SECAM are composite video signals, as opposed to RGB video which is not.

See also: Vertical Sync Signal.

Confidence

A property of a block that indicates whether or not the circuitry controlling the crosspoints in the block is functioning correctly.

When block checking determines that a block is not functioning correctly, the block is said to have a confidence error.

Confidence Error

See Confidence.

Configuration

A collection of system definitions that define the environment in which the system controller operates.

Each configuration is stored as a collection of files (.dbf or .txt) in a separate folder.

Configuration names may contain up to 32 alphanumeric characters.

Configuration Lock

A security measure enabled when a configuration is being uploaded or downloaded.

A configuration lock is used to ensure that only one user at a time may download a configuration to the controller.

Control Panel

See: Panel.

CPU Link

A bi-directional communication interface. A CPU link has two components: a serial port (either RS-232 or RS-422), and a protocol to govern how the port is used.

Crosspoint

The circuitry and components on a printed circuit board that constitute a single physical switch.

See also: Physical Switch.

Data Key

A user configurable control panel key, whose assigned function is used when the panel is in any mode except Salvo Select Mode.

Many control panels have user configurable keys. Each key can be assigned two functions, one as a data key and one as a salvo key. When the keys are pressed, the data key functions are used except when the panel is in salvo mode.

Data Key List

A named list of the functions assigned to each data key on a panel.

Multiple panels may share a data key list as long as they are the same type of panel. Different panel types may not use the same data key list.

Data key list names are one to eight characters in length and are constructed using uppercase letters, numbers, and spaces. The first character must be a letter.

Default Destination

The destination for which status will be displayed when power is applied to a panel, or when a new configuration is downloaded to the controller.

Although not mandatory, it is recommended that a default destination be selected for each panel.

Destination

One or more logical outputs (limited to one per level), on one or more levels, that are switched together as a group.

Destination names:

1. Shall be created using only the following characters:

Upper case letters A through Z

Lower case letters a through z if enabled in the control system software

Numbers 0 through 9

The following special characters: space (), hyphen-minus (-), exclamation mark (!), ampersand (&), plus sign (+), equals sign (=), commercial at (@), and low line (_)

2. Shall contain a minimum of one, and a maximum of eight characters.
3. Shall not begin or end with a space.
4. Shall be unique in the universe of destination and reentry names.

Due to a screen font limitation, the low line character (_) will be represented on-screen by Win3500Plus as the space character (). It will, however, be correctly displayed on panels as the low line character (_).

See also: Category.

Destination Block

See: Source Block.

Destination Group

See: Destination.

Destination Include List

A named list of the destinations a specific control panel is authorized to control.

A destination include list may be shared by multiple panels.

The default destination assigned to a panel may be controlled even if it is not on the destination include list.

Destination include list names are one to eight characters in length and are constructed using uppercase letters, numbers, and spaces. The first character must be a letter.

Destination Number

A number assigned to each destination by the controller and used by CPU Protocol 1.

Destination numbers are also assigned to reentries.

Destination Status

See: Status.

Diagonal

A diagnostic procedure that causes a range of physical inputs to be switched to a range of physical outputs, in a diagonal pattern starting from a specified coordinate and continuing until the either the inputs or outputs are exhausted, for a specified component, with a single command.

Example: Assume the existence of component RED spanning physical inputs 1 through 6 and physical outputs 1 through 6 on a routing switcher. A diagonal with a starting input of 2 and a starting output of 1 would cause the following physical switches to be taken: (2,1), (3,2), (4,3), (5,4), and (6,5).

See also: All Call.

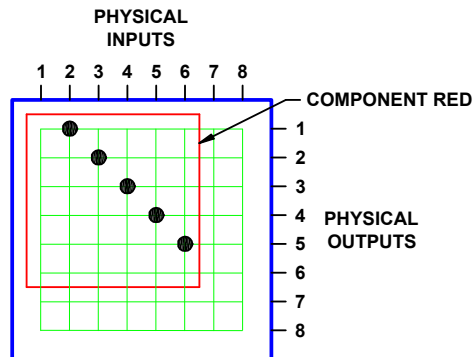


Figure 71. Diagonal

EIA

Electronic Industries Alliance.

Follow Switch

A switch where a single source is switched to a single destination on all levels. An abbreviated form of audio-follow-video switch.

Example: Assume the existence of source VTR1 and destination MON1 defined on levels VIDEO and AUDIO. If VTR1 is switched to MON1 on both the VIDEO level and AUDIO level, a follow switch has been taken.

This is the most common manner in which switches are taken on a routing switcher.

Table 4. Follow Switch

Destination	Source	
	Level: VIDEO	Level: AUDIO
MON1	VTR1	VTR1

See also: Breakaway Switch.

House Black

See: House Sync.

House Sync

A composite color video signal that has sync, color burst, and black video. It is used to synchronize video sources, and other equipment, to the same sync and color information.

Index

Obsolete. Prior to 3500Plus v3.0, indices were numbers used with categories to construct source, destination, and reentry names.

See also: Category.

Input Offset

In matrix space, the amount by which the origin of a component on strobe x, is offset from the origin of strobe x, measured along the input axis.

The coordinates of crosspoints in matrix space are determined by the strobe they reside on, and their input and output numbers. They are given in the form (input,output) on strobe x. The origin of a component (a matrix of crosspoints) is designated by the point that falls nearest the origin of its strobe (1,1). In Figure A below, the 3x4 component bounded by coordinates (3,2), (5,2), (5,5), and (3,5) has its origin at (3,2).

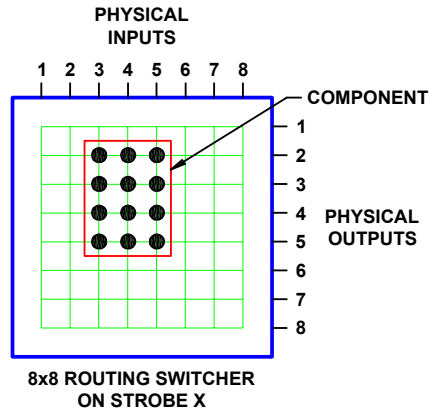


Figure 72. Input Offset, Single Routing Switcher

Input offset is the amount by which the origin of a component is offset from the origin of its strobe, measured along the input axis. A component whose origin coincides with that of its strobe (1,1) will have an input offset of 0. The component shown in Figure 72 has an input offset of 2.

When multiple routing switchers are assigned to the same strobe, the input and output connectors are renumbered to provide a unique coordinate for each crosspoint. Crosspoint coordinates are then determined in the same manner as above. The component shown in Figure 73 has its origin at (12,7) and an input offset of 11.

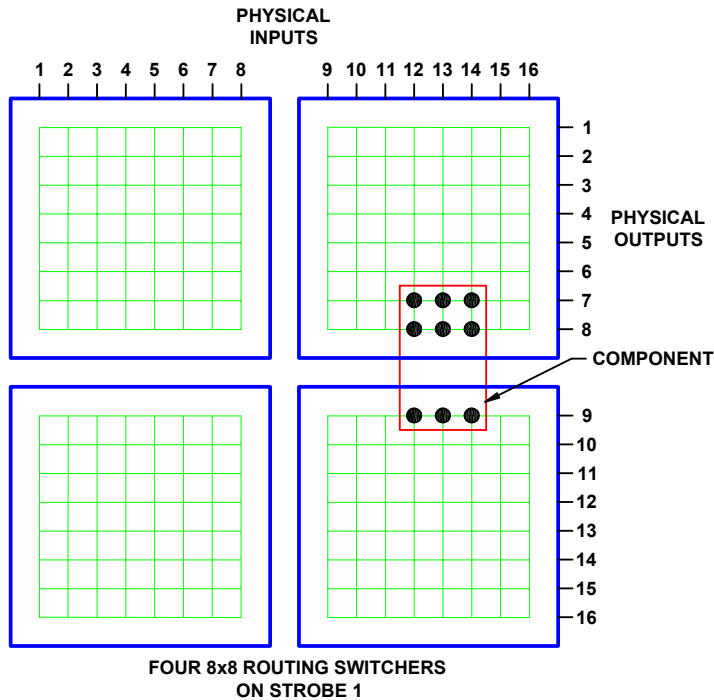


Figure 73. Input Offset, Multiple Routing Switchers

Level

A group of related components that are switched together.

A level is sometimes referred to as a level of control and is the basic granularity seen by a user. The components that comprise a level will always be switched together except when performing diagnostic operations.

Figure 74 shows a 2x2 RGB video level made up of three components, “RED”, “GRN”, and “BLU”, all of which are switched together at the same time.

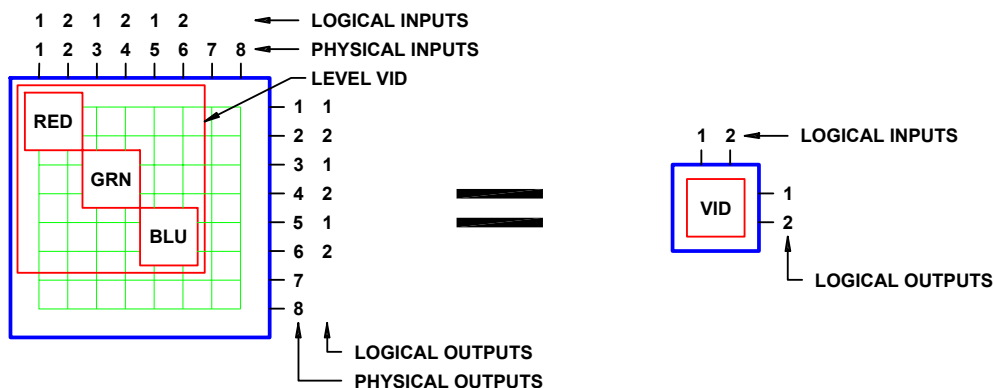


Figure 74. Level

As a general rule, users control the switching of levels, but component switching is handled automatically by the switching system. As shown in Figure 74, a user can specify a single logical switch, such as VID Input 1 to VID Output 2. This would result in the control system software taking three physical switches by activating crosspoints (1,2), (3,4), and (5,6).

Level names are one to eight characters in length and are constructed using uppercase letters, numbers, and spaces. The first character must be a letter.

Level Order

A property assigned to a level that controls the order of display when levels are displayed on a control panel, or addressed in CPU link protocols.

Levels of Control List

A named list of the levels a specific control panel is authorized to control.

Multiple panels may share a levels of control list.

Levels of control list names are one to eight characters in length and are constructed using uppercase letters, numbers, and spaces. The first character must be a letter.

Local Modem

A modem connected to a PC running control system software such as Win3500Plus.

See also: Remote Modem.

Lock

A property placed on a destination that prevents all panels and ports from taking a switch on that destination, including the panel or port that locked it.

Locks may be cleared by any panel or port that has the same requester code and lock priority as the panel that locked the destination, that has a higher lock priority, or that has a lock priority of 0 (zero).

See also: Lock Priority, Protect.

Lock Priority

A property of panels and ports that allows them to be grouped with other panels or ports for the purpose of establishing lock and protect authority.

The lower the lock priority number, the higher the priority. Panel lock priorities not explicitly defined automatically default to “0” which gives absolute authority to clear any lock or protect on the system.

See also: Lock, Protect.

Logical Input

One or more physical inputs that are switched together as a group.

Logical inputs and outputs are switched level-by-level. Since each level may have more than one component, switching a single logical input or output may involve switching more than one physical input or output.

For example, a RGB input signal represents three physical inputs because it is connected to three input connectors on the routing switcher. However, since all three components (R, G, and B) are switched together as a level, it is a single logical input.

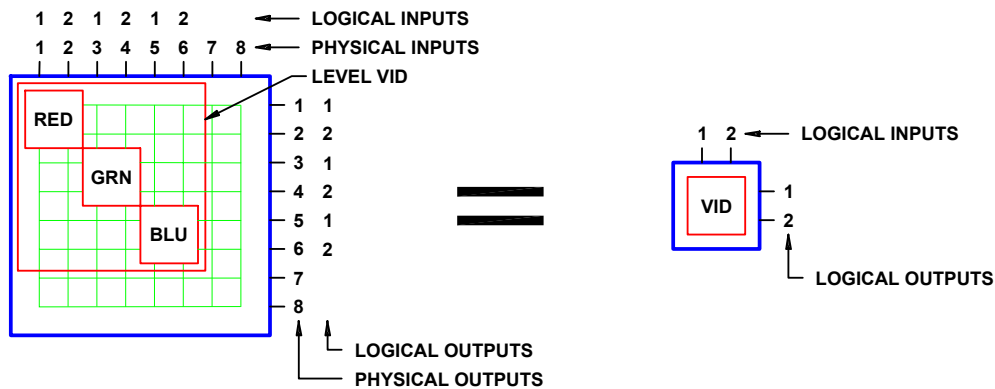


Figure 75. Logical Input

Logical inputs are numbered sequentially, level-by-level, beginning with 1. Input numbers are assigned in the same order as the physical inputs to the component(s) of the level. Since a routing switcher may be configured to have more than one level, it may have more than one logical input designated as number 1. However, within each level, every logical input will have a unique number. Logical outputs are numbered in the same manner. Logical input/output numbering is handled automatically by the control system software as components are configured.

See also: Physical Input.

Logical Output

See: Logical Input.

Logical Switch

The control system software command that switches a logical input to a logical output.

See also: Physical Switch.

Matrix Breakup

The division of a single physical matrix into one or more components.

Matrix breakup allows complex signal types to reside within a single physical matrix. For example, a video matrix is often broken into R, G, and B components.

Matrix breakup is a software function handled by the control system software.

Matrix Space

A three-dimensional mathematical model of the crosspoints in a switching system.

The coordinates of crosspoints in matrix space are given in the form (input,output) on strobe x.

When a switching system is physically made up of only one routing switcher, the crosspoint coordinates are the same as the input and output connector numbers, and the resulting matrix space has only two dimensions. For example, the coordinates of the crosspoint indicated in Figure 76 is (4,2) on strobe 1.

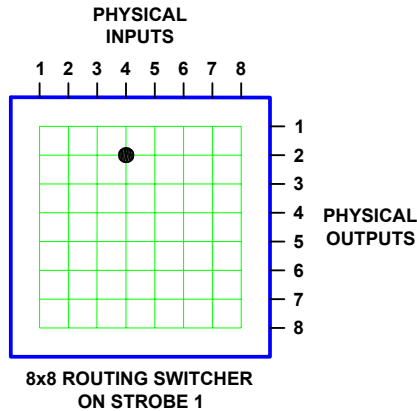


Figure 76. Matrix Space, One Routing Switcher on One Strobe

Two-dimensional matrix space can also be composed of the crosspoints located in multiple routing switchers. The input and output connectors on the additional routing switchers are renumbered as required to ensure that each crosspoint can be identified by a unique (input,output) coordinate. When switching systems are constructed in this manner, matrix space size is no longer constrained by routing switcher size. The switching system shown in Figure 77 consists of four 8x8 routing switchers assigned to the same strobe. The coordinates of the indicated crosspoint are (12,14) on strobe 1.

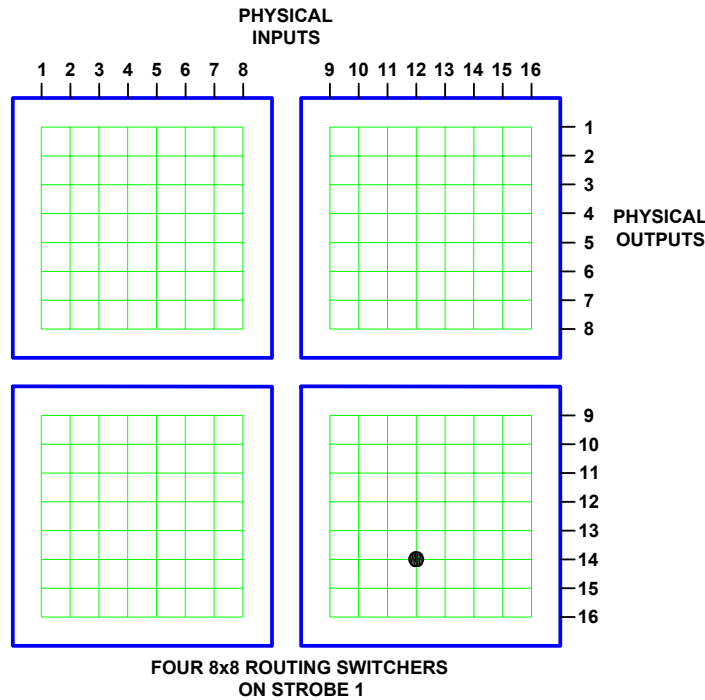


Figure 77. Matrix Space, Four Routing Switchers on One Strobe

Strobe numbers are used to introduce a third dimension into matrix space. Every routing switcher in a switching system is assigned to a strobe. In systems using more than one strobe (and, therefore having three-dimensional matrix space), crosspoint coordinates are given in the form (input,output) on strobe x. In Figure 78, the coordinates of the indicated crosspoint in the left routing switcher are (4,2) on strobe 1. The coordinates of the crosspoint on the right are (4,2) on strobe 2.

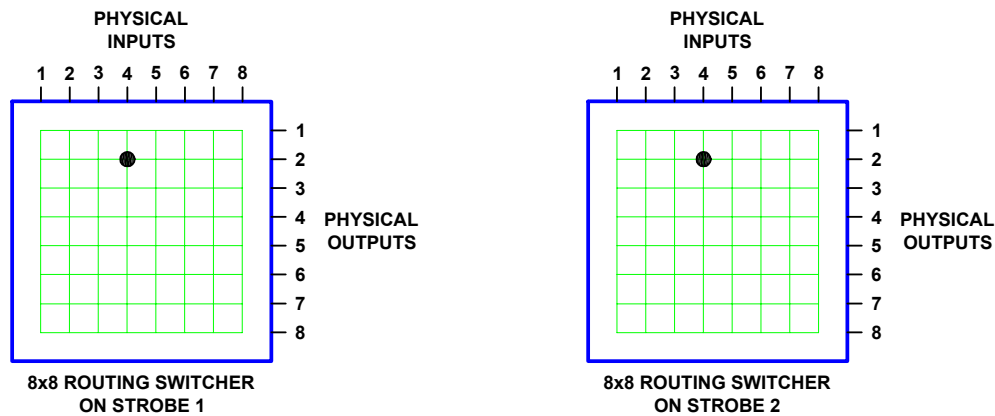


Figure 78. Matrix Space, Two Routing Switchers on Two Strobes

NTSC

National Television Standards Committee. The NTSC was responsible for setting television and video standards in the United States. The NTSC standard for television defines a composite video signal with a refresh rate of 60 half-frames (interlaced) per second. Each frame contains 525 lines and can contain 16 million different colors.

See also: PAL, SECAM.

Output Offset

In matrix space, the amount by which the origin of a component on strobe x, is offset from the origin of strobe x, measured along the output axis.

The coordinates of crosspoints in matrix space are determined by the strobe they reside on, and their input and output numbers. They are given in the form (input,output) on strobe x. The origin of a component (a matrix of crosspoints) is designated by the point that falls nearest the origin of its Strobe (1,1). In Figure 79 below, the 3x4 Component bounded by coordinates (3,2), (5,2), (5,5), and (3,5) has its origin at (3,2).

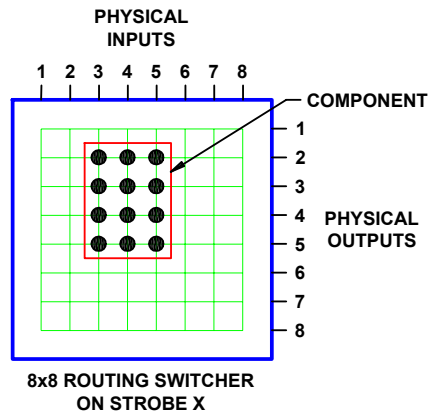


Figure 79. Output Offset, Single Routing Switcher

Output offset is the amount by which the origin of a component is offset from the origin of its strobe, measured along the output axis. A component whose origin coincides with that of its strobe (1,1) will have an output offset of 0. The component shown in Figure 79 has an output offset of 1.

When multiple routing switchers are assigned to the same strobe, the input and output connectors are renumbered to provide a unique coordinate for each crosspoint. Crosspoint coordinates are then determined in the same manner as above. The component shown in Figure 80 has its origin at (12,7) and an output offset of 6.

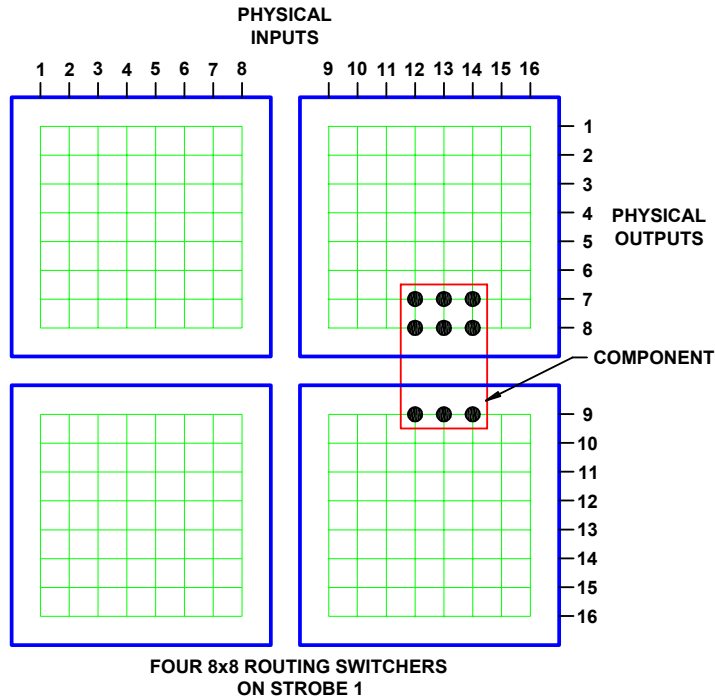


Figure 80. Output Offset, Multiple Routing Switchers

PAL

Phase Alternating Line, the dominant television standard in Europe. The United States uses a different standard, NTSC. Whereas NTSC delivers 525 lines of resolution at 60 half-frames per second, PAL delivers 625 lines at 50 half-frames per second.

See also: NTSC, SECAM.

Panel

A user interface, usually mounted in a standard 19" rack, containing alphanumeric displays, push buttons, LEDs, etc. Sometimes referred to as a control panel.

A panel is used to control a switching system by taking switches, obtaining status, etc.

Panel names are one to eight characters in length and are constructed using uppercase letters, numbers, and spaces. The first character must be a letter.

Panel Address

A unique identifier, set by DIP switch on every panel, that allows the system controller to differentiate between panels.

Panel Name

An optional identifier for a control panel.

Individual panels are identified by panel address. Because of this, a panel name is not required when configuring a panel.

Panel names are one to eight characters in length and are constructed using uppercase letters, numbers, and spaces. The first character must be a letter.

Password

Each User Account and Configuration may be protected with an eight-character, upper case, alphanumeric password.

PC

Personal computer. Typically used to run control system software such as Win3500Plus.

PESA control system software is designed to operate on any IBM® compatible personal computer (AT® or later) with a Microsoft Windows™ operating system (3.1, 95, 98, or NT).

Physical Input

The electrical signal coming from a device connected to an input connector on a routing switcher.

Physical inputs and outputs are the electrical signals passing through the input and output connectors of a routing switcher. Each connector represents one input or output.

For example, a RGB input signal would represent three physical inputs since it would be connected to three input connectors on the routing switcher.

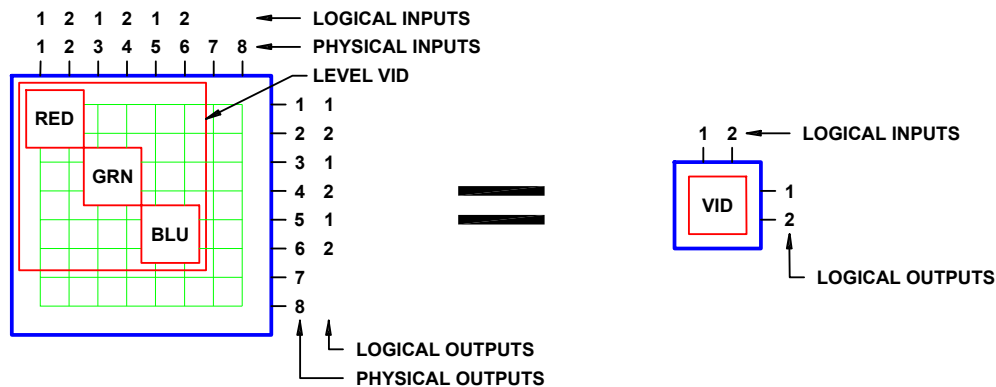


Figure 81. Physical Input

Physical inputs are numbered sequentially beginning with 1, and have the same number as the corresponding input connector on the routing switcher. This includes connectors that have been renumbered with input offset when multiple routing switchers have a common strobe. Physical outputs are numbered in the same manner.

See also: Logical Input.

Physical Switch

The hardware that switches a physical input to a physical output. Sometimes referred to as a crosspoint.

See also: Logical Switch, Crosspoint.

Physical Output

See: Physical Input.

Port

A serial communication bus interface connector on a system controller.

Port names are one to eight characters in length and are constructed using uppercase letters, numbers, and spaces. The first character must be a letter. Port names are optional because a port is identified by its address.

PRC Device

A device designed to be compatible with the PESA Routing Control protocol (PRC).

Ocelot, Cougar, Jaguar, Tiger, and Cheetah routing switchers are PRC devices.

See also: RM5 Device.

Protect

A property placed on a destination that prevents all panels and ports from taking a switch on that destination, unless taken from a panel or port that has the same requester code as the panel or port that protected it.

Destination protection may be cleared by any panel or port that has the same requester code and lock priority as the panel or port that protected the destination, that has a higher lock priority, or that has a lock priority of 0 (zero).

See also: Lock, Lock Priority, Requester Code.

Protect Priority

See: Lock Priority.

Protocol

The format to be used when sending data between two devices.

Protocol names are one to eight characters in length and are constructed using uppercase letters, numbers, and spaces. The first character must be a letter.

Readback

Information received from a routing switcher reporting which physical input is currently switched to a specified physical output.

To ensure that the configuration in the controller, and the actual state of the physical switches in a routing switcher agree, the routing switcher can be made to read back the status of each physical output. Where the routing switcher reports a different physical input from that expected by the controller, a readback error is declared.

Readback Error

See Readback.

Reentry

An entity that exists as both a source and destination at the same time, whose function is to facilitate switching a single source to multiple destinations, with a single logical switch.

Reentries are virtual entities that exist in the control software only. Their creation and use does not require any physical modification to the switching system hardware.

Example: Assume the existence of source SRC1 and destinations DST1, DST2, and DST3. Reentry REENT1 is created and switched to the three destinations. With a single logical switch, SRC1 can now be switched to REENT1 and the signal will arrive at all three destinations at the same time.

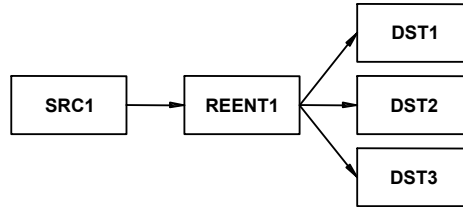


Figure 82. Reentry

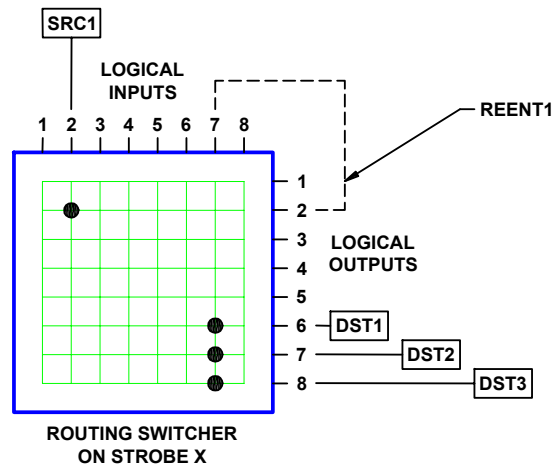


Figure 83. Reentry

A reentry is assigned both a source number and a destination number.

Reentry names:

1. Shall be created using only the following characters:
 - Upper case letters A through Z
 - Lower case letters a through z if enabled in the control system software
 - Numbers 0 through 9
 - The following special characters: space (), hyphen-minus (-), exclamation mark (!), ampersand (&), plus sign (+), equals sign (=), commercial at (@), and low line (_)
2. Shall contain a minimum of one, and a maximum of eight characters.
3. Shall not begin or end with a space.
4. Shall be unique in the universe of source, destination, and reentry names.

Due to a screen font limitation, the low line character (_) will be represented on-screen by Win3500Plus as the space character (). It will, however, be correctly displayed on panels as the low line character (_).

See also: Category.

Remote Client

A user connected to a networked system controller such as the e-Route.

Remote Client Name

A string of up to sixteen characters consisting of letters, numbers, and some symbols. A Remote Client Name must begin with a letter, and may not contain any spaces.

Symbols Permitted: - _ @ ! & + =

Remote Client Parameters

Reserved for future use.

Remote Client Password

A string of up to eight characters consisting of letters, numbers, and some symbols. A Remote Client Password may begin with either a number or a letter, and may not contain any spaces.

Symbols Permitted: : ; < = > ? @

Remote Modem

An external modem connected to a system controller.

The remote modem must be an external type capable of being configured to automatically answer incoming calls. Because the system controller does not output any modem configuration information, the remote modem must be completely transparent to the controller. The only modems tested by PESA for use as remote modems are the Practical Peripherals PM288MT II and the U.S. Robotics Sportster 28.8 using the following initialization strings:

PM288MT II: AT S0=2 Q1 X4 &C1 &D0 &K3 &S1 &W0 &Y0

Sportster 28.8: AT &F1 S0=2 &H1 &R2 &I0 L2 Q1 &C1 &D0 Y0 &W0

For more information about these modems and their initialization strings, contact [Practical Peripherals](#) or [U.S. Robotics](#). Before using any other type of remote modem, please consult with PESA Customer Service.

See also: Local Modem.

Requester Code

A property of panels and ports that allows them to be grouped with other panels or ports for the purpose of establishing lock and protect authority.

Panel requester codes not explicitly defined automatically default to the panel address.

See also Lock, Lock Priority, Protect.

RM5 Device

A device designed to be compatible with the System 5 (RM5) control protocol.

The RM4000, RM5000, and Lynx routing switcher families are RM5 devices.

See also: PRC Device.

Salvo

A group of predefined logical switches taken in the same vertical interval.

Example: Assume the existence of sources CART1 and CART2; and destinations MON1, VTR1, and VTR2, defined on levels AUD and VID.

By pressing a single control panel key, the user desires to take the following switches: audio and video from CART1 to MON1; audio from CART2 and video from CART1 to VTR1; and audio and video from CART2 to VTR2.

Table 5. Salvo

Salvo Entry	Destination	Source	
		Level: AUD	Level: VID
1	MON1	CART1	CART1
2	VTR1	CART2	CART1
3	VTR2	CART2	CART2

Salvo SAL1 is created and will consist of three salvo entries (one salvo entry per destination in the salvo). Each salvo entry is then configured to switch the selected sources on the appropriate levels. Once salvo SAL1 is assigned to a salvo key on the control panel, the user will be able to take all the specified switches with the press of a single key.

All switches in a salvo are taken within the same vertical interval.

Salvo names are one to eight characters in length and are constructed using uppercase letters, numbers, and spaces. The first character must be a letter.

Salvo Entry

One or more logical switches assigned to a specific destination that is part of a salvo.

Salvo entry names are the same as the destination they are associated with.

Salvo Include List

A named list of the salvos a specific control panel is authorized to control.

A salvo include list may be shared by multiple panels.

Salvo include list names are one to eight characters in length and are constructed using uppercase letters, numbers, and spaces. The first character must be a letter.

Salvo Key

A user configurable control panel key, whose assigned function is used when the panel is in salvo select mode.

Many control panels have user configurable keys. Each key can be assigned two functions, one as a data key and one as a salvo key. When the keys are pressed, the data key functions are used except when the panel is in salvo mode.

When a panel is in salvo select mode, a salvo will be executed immediately when the salvo key is pressed.

Salvo Key List

A named list of the functions assigned to each salvo key on a panel.

Multiple panels may share a salvo key list as long as they are the same type of panel. Different panel types may not use the same salvo key list.

Salvo key list names are one to eight characters in length and are constructed using uppercase letters, numbers, and spaces. The first character must be a letter.

SECAM

Sequential Couleur Avec Memoire, the line sequential color system used in France, Russia, Eastern Europe, and some Middle Eastern countries. Like PAL, SECAM is based on a 50 Hz power system, displaying interlaced lines at 50 fields per second. The color information is transmitted sequentially (R-Y followed by B-Y, etc.) for each line and conveyed by a frequency modulated sub carrier that avoids the distortion arising during NTSC transmission.

See also: NTSC, SECAM.

Serial Port

See: Port.

Shared Input

A logical input that is used by more than one source.

Note that shared outputs are not permitted.

See also: Source Block.

SMPTE

Society of Motion Picture and Television Engineers. A professional organization that recommends standards for the television and film industries.

Soft Destination Key

See: Soft Key.

Soft Key

A special type of data key whose assigned function may be changed locally by a panel user.

Control system software is used to designate a data key as either a soft source key or a soft destination key. The assignment of a specific source or destination to the soft key may then be made with either the control system software, or locally at the panel by using Store Mode.

Soft Source Key

See: Soft Key.

Source

One or more logical inputs (limited to one per level), on one or more levels, that are switched together as a group.

Source names:

1. Shall be created using only the following characters:

Upper case letters A through Z

Lower case letters a through z if enabled in the control system software

Numbers 0 through 9

The following special characters: space (), hyphen-minus (-), exclamation mark (!), ampersand (&), plus sign (+), equals sign (=), commercial at (@), and low line (_)

2. Shall contain a minimum of one, and a maximum of eight characters.
3. Shall not begin or end with a space.

4. Shall be unique in the universe of source and reentry names.

Due to a screen font limitation, the low line character (_) will be represented on-screen by Win3500Plus as the space character (). It will, however, be correctly displayed on panels as the low line character (_).

See also: Category.

Source Block

A means of ensuring that a particular source will not be switched to a specific.

When configuring a switching system, it may be desirable to use source blocking to restrict the switching of certain logical inputs. This may be done while configuring either sources or destinations.

Since a blocked source may contain a logical input that is shared (used by more than one source), care should be taken to ensure that all sources using the logical input are blocked from the destination to be protected.

Source Group

See: Source.

Source Include List

A named list of the sources a specific control panel is authorized to control.

A source include list may be shared by multiple panels.

Source include list names are one to eight characters in length and are constructed using uppercase letters, numbers, and spaces. The first character must be a letter.

Source Number

A number assigned to each source by the controller and used by CPU Protocol 1.

Source numbers are also assigned to reentries.

Status

A list of all sources on all levels currently switched to a selected destination.

Sometimes also used to refer to the operational state of the control system (lock status, switch status, and panel status).

Status Level

The default level to be used when displaying the status of a destination receiving signals from multiple sources, on a panel in all levels mode (ALL LEVS).

One function of the LCD display on a panel is to show which source is currently switched to a selected destination. This is known as destination status. Although more than one source can be switched to a single destination (limited to one source per level), the status display can only show one source at a time. When the panel is in all levels mode (ALL LEVS), Status Level is used to designate a default level to be used when displaying status. Only the source on this default level will be displayed. On panels that do not have LCD displays, this is indicated by a continuous, bright, pushbutton light.

If one or more other sources are also switched to the destination (on other levels), an octothorp (the “#” symbol) will be appended to the source name. The other source names can be viewed by toggling each level key in turn to show, level-by-level, which source has been switched to the destination. On panels that do not have LCD displays, this is indicated by an alternating bright/dim push button light.

Status Method

One of two possible ways to display status when a panel is in all levels (ALL LEVS) mode and the destination is not defined on the Status Level.

When a panel is in all levels mode (ALL LEVS), the status shown will be the source on the Status Level assigned to that panel. If the destination is not defined on the Status Level, Status Method is used to control the resulting display:

If DEF (Default Method) is selected, NO XXXXX will be displayed where XXXXX is the Status Level assigned to the panel.

If GRP (Group Method) is selected, the controller will examine every level sequentially, starting with the level designated as Level Order 1. The source switched on the first level found where the destination is defined, will be displayed as the destination status.

Stop Bit

In asynchronous communication, a bit that indicates that a byte of data has just been transmitted.

Every byte of data is preceded by a start bit and followed by a stop bit.

Strobe

The third dimension of matrix space.

Every routing switcher in a switching system is assigned a strobe. This is usually accomplished by setting a DIP switch on the back of the routing switcher. Strobes do not have to be unique and, in larger systems, each strobe might be associated with several routing switchers.

In many switching systems, strobes are used to group levels of the same type together. For example, video may be on Strobe 1, audio on Strobe 2, etc.

Sync Reference

A vertical sync signal used to ensure that switching occurs in the vertical interval of a video signal.

Sync Reference names are one to eight characters in length and are constructed using uppercase letters, numbers, and spaces. The first character must be a letter.

See also: Vertical Sync Signal.

System 5 Device

See: RM5 Device.

TIA

Telecommunications Industry Association.

Tieline

A special type of logical switch that allows a logical input on one level to be switched to a logical output on a different level.

Example 1 - Switch a signal from analog camera ANCAM into an analog-to-digital converter (A/D) and then into digital video tape recorder DIGVTR: (Figure 84) Connect a cable between the appropriate output connector of the analog routing switcher and the input of the A/D, and a cable between the output of the A/D and the appropriate input connector on the digital routing switcher. Configure levels ANAVID and DIGVID and tieline TLINE1 to connect them. Configure destination DIGVTR on level DIGVID. Configure source ANCAM on level ANAVID to use tieline TLINE1.

ANCAM may now be switched to DIGVTR with a single logical switch even though they are on different levels.

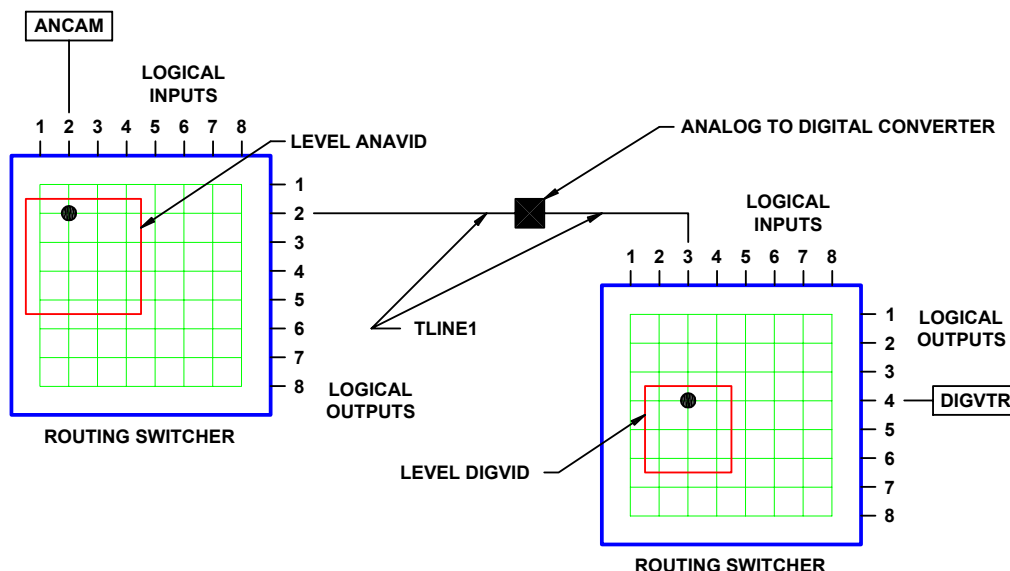


Figure 84. Tieline

Example 2 - Switch a signal from camera CAM1 (connected to a routing switcher in Room A) to video tape recorder VTR1 (connected to a routing switcher in Room B): (Figure 85) Connect a cable between the appropriate output connector of the routing switcher in Room A and the appropriate input connector on the routing switcher in Room B. Create levels VIDA and VIDB and configure a tieline connecting the output of VIDA to the input of VIDB. Define source CAM1 on level VIDA and destination VTR1 on level VIDB. CAM1 may now be switched to VTR1 with a single logical switch even though they (and their respective routing switchers) are located in two separate rooms.

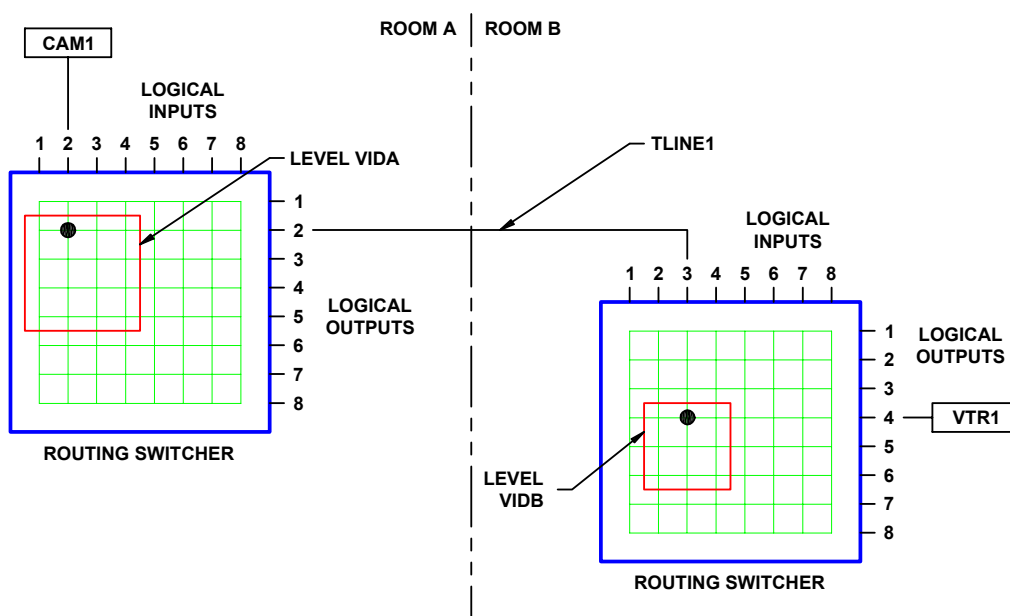


Figure 85. Tieline

Tieline names are one to eight characters in length and are constructed using uppercase letters, numbers, and spaces. The first character must be a letter.

User Account

A set of privileges and an optional user password saved as a user name.

User accounts provide a means of restricting access to certain system functions on a user-by-user basis.

User Name

A string of up to eight characters consisting of upper case letters, numbers, spaces, and some symbols:

Permitted: ! @ # \$ % ^ & * _ + - = [] \ : " ; ' < > . ? /

Forbidden: { } | , ()

User Password

A string of up to eight characters consisting of letters, numbers, and spaces. A User Password may begin with either a number or a letter. Leading spaces are discarded.

Vertical Interval

The portion of the video signal in which image information is absent to allow for the video device to prepare for the next frame of information.

Vertical Sync Signal

A short pulse generated at the beginning of each video timing frame that tells the video monitor when to start a new video timing field. For switching purposes, the vertical sync signal may be derived from house sync.

See also: Sync Reference.

Vertical Trigger

See: Vertical Sync Signal.

Video Timing Field

A package of information that contains information required to complete a full scan across a video monitor. There are two types of video fields denoted as odd and even.

Video Timing Frame

A package of information that contains all the information required to draw an image on a video device. Generally considered with respect to NTSC and PAL signals where the information is transmitted over a fixed time frame. A frame consists of two video timing fields denoted odd and even.

Working Directory

The location on the PC hard drive where control system software such as Win3500Plus is installed.

If the default settings of the Win3500Plus installation program were used, this will be c:\win3500p for 16-bit versions of the Microsoft Windows OS, and c:\program files\win3500p for 32-bit versions. Configurations may not be saved in the working directory or any subdirectory of the working directory.

Index

A

Address 28, 58–59, 65, 67
All Call 74, 76

B

Baud 11, 22, 68, 82
Block 21, 40–42, 45, 74, 78
Block Checking 78
Blocked Source 40, 45

C

Category 41, 46, 50, 51–52
Checksum 69–70
Chop 13, 16, 34, 35
Chop Rate 34
Component 36–38, 74–76, 81
Confidence 21, 70, 73
Confidence Error 74
Configuration 2, 12, 15–16, 19–20, 21, 23–25, 28, 33, 34, 36, 38, 39–43, 44–47, 48–53, 51, 55–56, 57, 60, 65–67, 70, 66–67, 73, 74, 77–78, 81–83
Configuration Lock 77
Control Panel 35, 44, 57–58, 62–63, 65
CPU Link 2, 11–12, 77, 21, 24, 35, 40, 45, 49, 55, 66–67, 69, 77, 82
Crosspoint 37

D

Data Key 44, 48, 51, 62, 64
Data Key List 62
Default Destination 48, 51, 60, 62
Destination 26, 29, 30, 36, 40, 44–53, 55, 59–60, 62, 83
Destination Include List 60, 62
Destination Number 45, 49
Destination Status 59–60
Diagonal 75–76

H

Hot Take 26

I

Index 52
Input Offset 38

L

Level 26, 30, 34–37, 39, 41–42, 46, 54, 59–61, 81, 83
Level Order 35, 60
Levels of Control List 60–62
Local Modem 2, 12–13, 22
Lock 58, 65, 67–68, 70, 77
Lock Priority 59, 67–68
Logical Input 39, 40–42, 45
Logical Output 39, 46, 83
Logical Switch 39, 49

M

Matrix Space 38
Modem 2, 11–13, 22–24, 77, 83

O

Output Offset 38

P

Panel 16, 21, 27–28, 57–66, 35, 44, 57–66, 67–68, 78, 27–28, 83
Panel Address 28, 58–59, 65
Panel Name 58, 65
Password 12–13, 16, 19, 20, 34, 82
PC 1–2, 9, 11–13, 19–20, 22–25, 77, 78, 82–83
Physical Input 42, 75
Physical Output 46
Physical Switch 74, 76
Port 2, 11–13, 22, 24, 59, 67–70, 82–83
PRC 37, 53, 67, 81
Protect 34, 58, 67–68, 70
Protocol 40, 45, 49, 55, 69–70

R

Readback 21, 73
Reentry 21, 28, 48–50
Remote Modem 2, 12–13, 22–24, 83
Requester Code 58, 65, 67
RM5 37, 53, 81

S

Salvo 27, 36, 44, 48, 50, 55–56, 62–63, 65

Salvo Entry 55
Salvo Include List 62
Salvo Key 57, 63
Salvo Key List 63
Serial Port 2, 11–13, 22, 24, 68, 82–83
Soft Key 44, 48, 51, 64
Source 26, 29, 30, 36, 39–44, 39–44, 45, 49–51, 55,
59–60, 61
Source Block 40–42, 45
Source Include List 61
Source Number 40
Status 21, 25–30, 36, 40, 45, 59, 65–66, 69–71, 73, 83
Status Level 36, 59–60, 83
Status Method 59
Stop Bit 68
Strobe 38
Sync Reference 29, 53, 83, 53

T

Terminator 70
Tieline 21, 30, 38–39, 41–43

U

User Account 12–13, 20–21, 70, 73, 12–13, 20–21, 82,
20–21
User Name 11–13, 19, 20–21, 24, 82
User Passwoar 13, 20

W

Working Directory 15, 83

Revision History

Rev.	Date	Description	By
A	03-30-99	Initial release.	G. Tarlton
B	10-12-99	Revised for v1.2 software per ECO-3468.	G. Tarlton
C	02-10-00	Revised glossary per ECO-3568.	G. Tarlton
D	03-20-00	Revised for v2.0 software per ECO-3607.	G. Tarlton
E	03-05-01	Deleted Printing Specification per ECO CE00113.	G. Tarlton
F	04-20-01	Revised for v3.0 software per ECO CE00185	G. Tarlton
G	06-06-01	Corrected compilation error in v3.0 Help file per ECO CE00347.	G. Tarlton
H	06-07-01	Revised for v3.1 software per ECO CE00206	G. Tarlton

