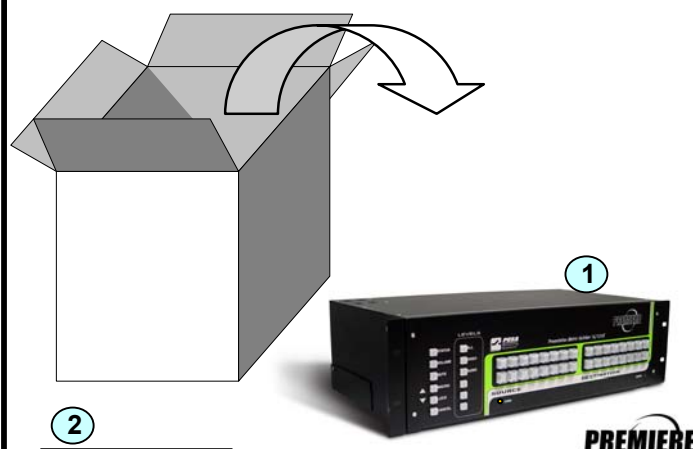


START

Step 1 UNPACKING THE PREMIERE EQUIPMENT

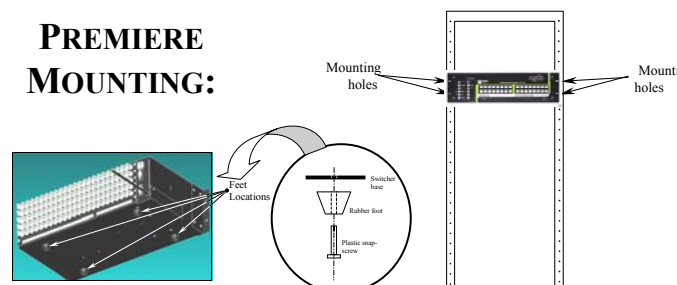
Unpack the equipment and verify components with the following list (6 items). Mount the feet on the switcher or mount the switcher in a rack. GO TO STEP 2.

For further information, refer to Chapter 2 in the *Premiere Switchers Manual* located on the *Backstage Control Software and Manual CD in Portable Document Format (PDF) file*.



Serial Cable

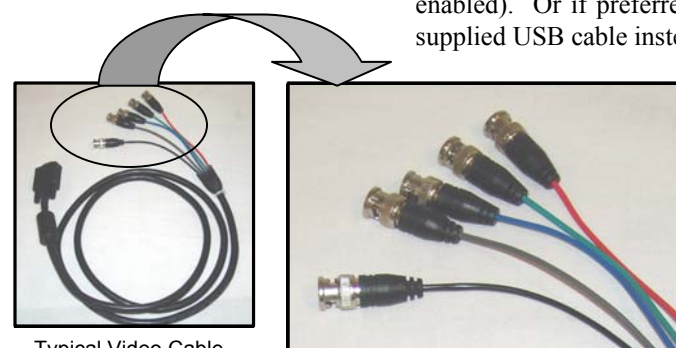
PREMIERE MOUNTING:



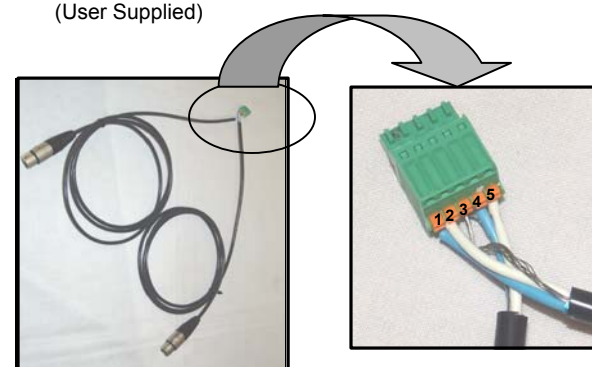
If any of the components are missing or damaged, contact PESA Customer Service at:
 Service at: (256) 726-9222
 Toll Free: (800) 323-7372
 Fax: (256) 726-9268
 Email: service@pesa.com

Step 2 HARDWARE SETUP

Connect cabling to Source (Inputs) and Destination (Outputs) connections. If the Graphical User Interface (GUI - Backstage Control) will be used, connect the Switcher to the PC with the supplied serial cable (unit is shipped with PESA Mode enabled). Or if preferred, connect the Switcher to the PC with a user-supplied USB cable instead of the serial cable. GO TO STEP 3.



Typical Video Cable
(User Supplied)



Typical Audio Cable
(User Supplied)

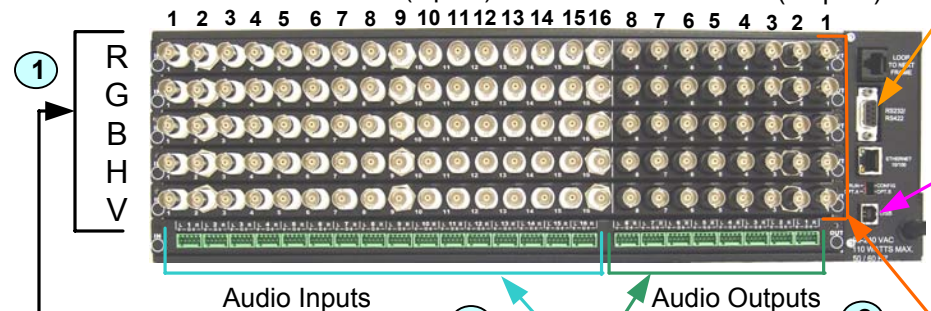
Only These Audio Connectors are Supplied:

- 1 = Left Channel Positive (+)
- 2 = Left Channel Negative (-)
- 3 = Common Ground (Shield)
- 4 = Right Channel Positive (+)
- 5 = Right Channel Negative (-)



R = Red raster (red cable)
 G = Green raster (green cable)
 B = Blue raster (blue cable)
 H = Horizontal Sync (grey cable)
 V = Vertical Sync (black cable)

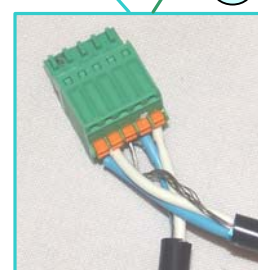
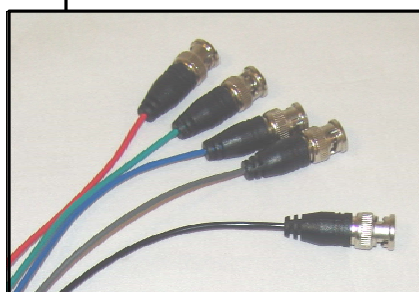
(16x8 RGBHV Premiere Matrix Switcher Shown)
 Sources (inputs) Destinations (outputs)



Serial Cable (Supplied)



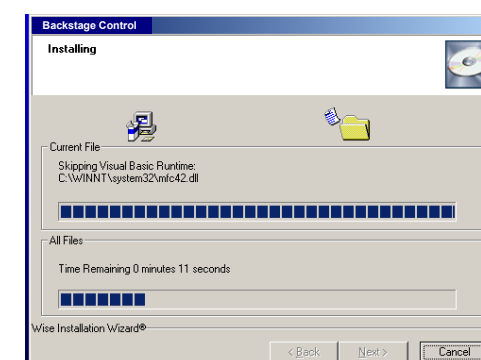
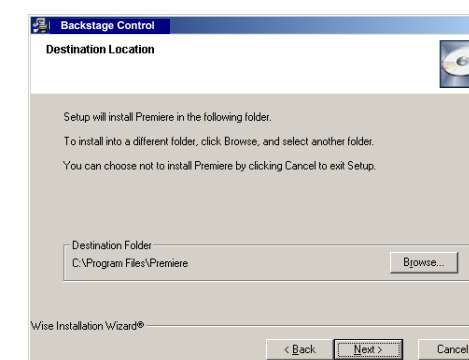
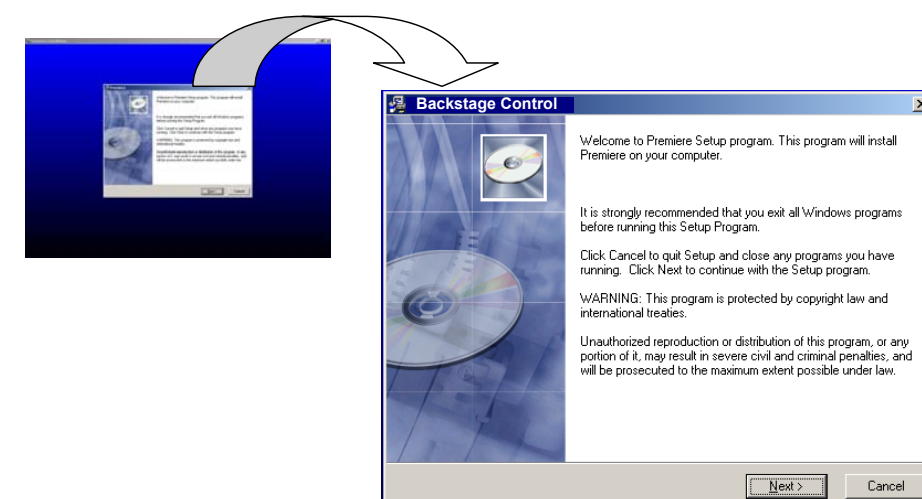
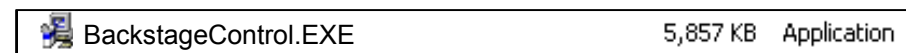
USB Cable
(User-Supplied)



For further information, refer to Chapter 4 in the *Premiere Switchers Manual* located on the supplied CD.

Step 3 SOFTWARE SETUP

Install the Backstage Control Software for the Premiere GUI (omit this step if GUI is not required). GO TO STEP 4 (on back).



For further information, refer to Chapter 5 in the *Premiere Switchers Manual* located on the supplied CD.