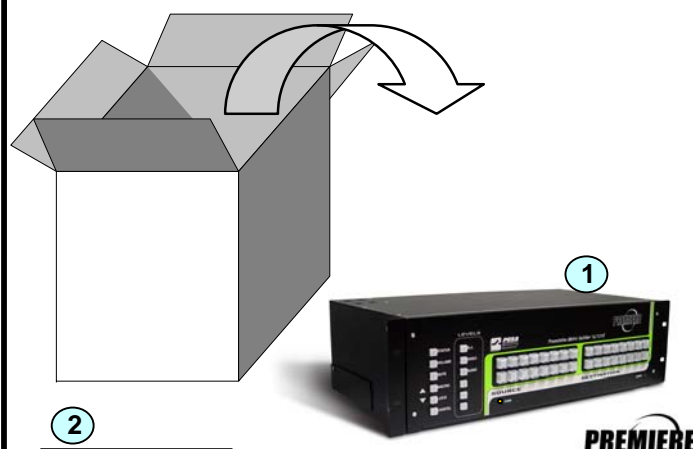


START

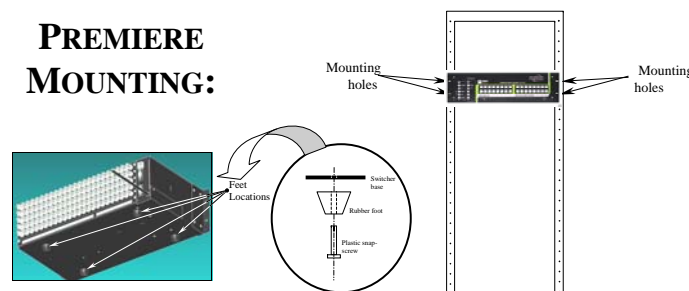
Step 1 UNPACKING THE PREMIERE EQUIPMENT

Unpack the equipment and verify components with the following list (6 items). Mount the feet on the switcher or mount the switcher in a rack. GO TO STEP 2.

For further information, refer to Chapter 2 in the *Premiere Switchers Manual* located on the *Backstage Control Software and Manual CD* in *Portable Document Format (PDF)* file.



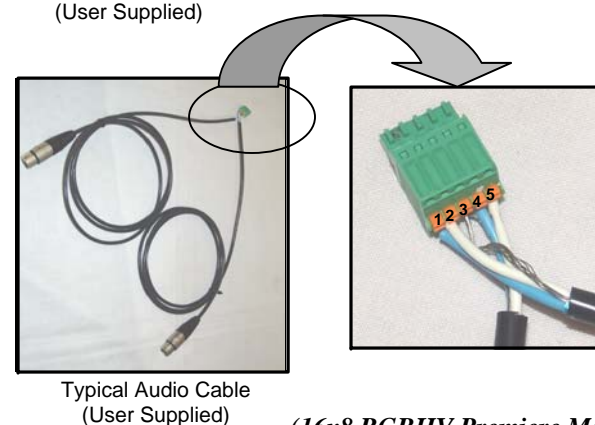
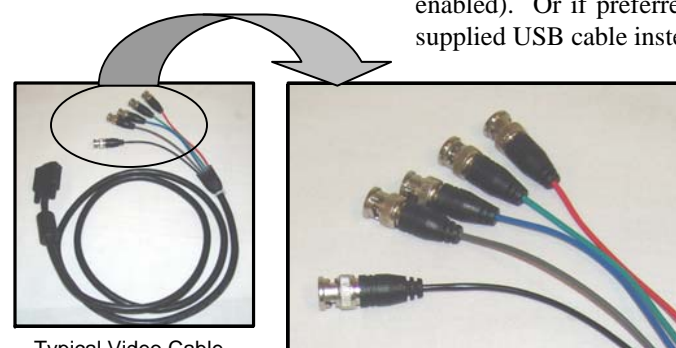
PREMIERE MOUNTING:



If any of the components are missing or damaged, contact QuStream Customer Service: (256) 726-9222
Toll Free: (800) 323-7372
Fax: (256) 726-9268
Email: service@qustream.com

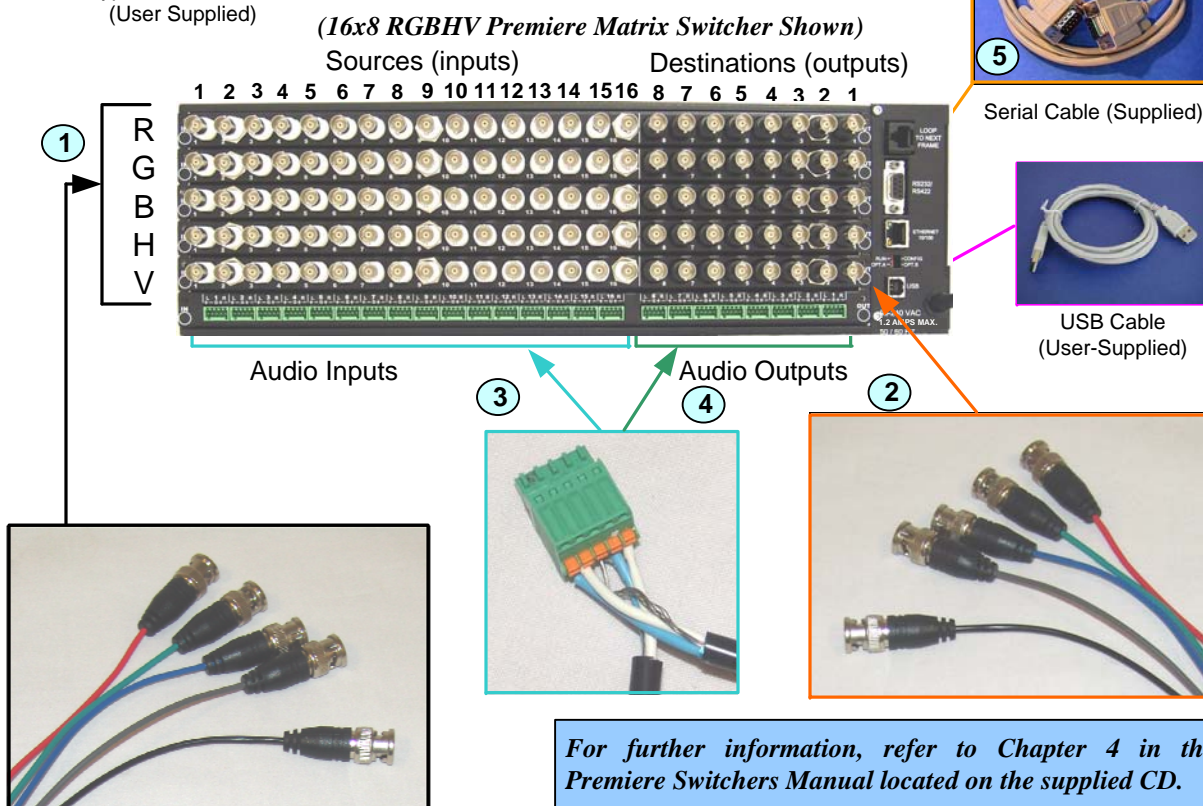
Step 2 HARDWARE SETUP

Connect cabling to Source (Inputs) and Destination (Outputs) connections. If the Graphical User Interface (GUI - Backstage Control) will be used, connect the Switcher to the PC with the supplied serial cable (unit is shipped with PESA Mode enabled). Or if preferred, connect the Switcher to the PC with a user-supplied USB cable instead of the serial cable. GO TO STEP 3.



Only These Audio Connectors are Supplied:

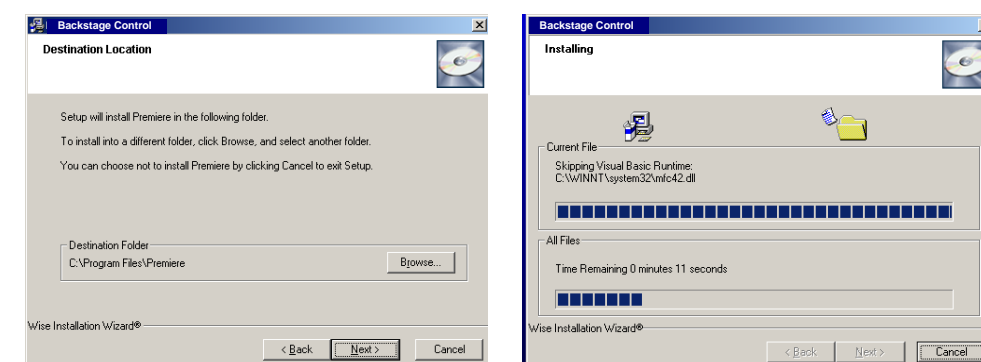
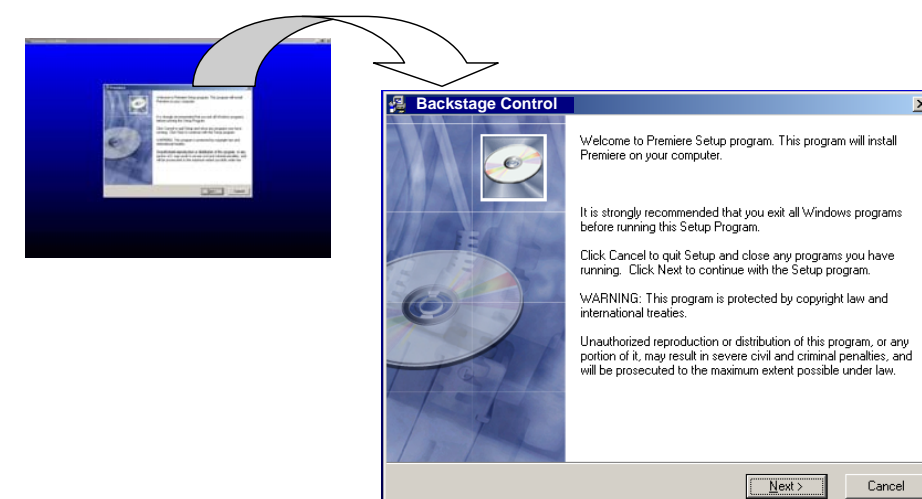
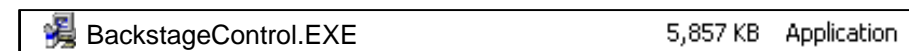
- 1 = Left Channel Positive (+)
- 2 = Left Channel Negative (-)
- 3 = Common Ground (Shield)
- 4 = Right Channel Positive (+)
- 5 = Right Channel Negative (-)



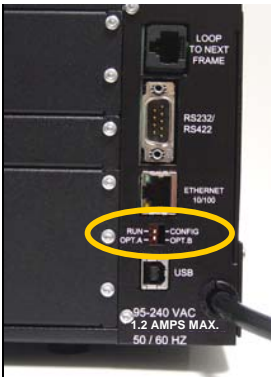
For further information, refer to Chapter 4 in the *Premiere Switchers Manual* located on the supplied CD.

Step 3 SOFTWARE SETUP

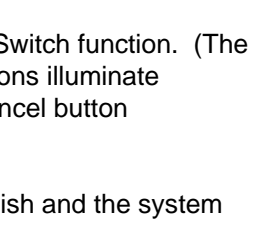
Install the Backstage Control Software for the Premiere GUI (omit this step if GUI is not required). GO TO STEP 4 (on back).



For further information, refer to Chapter 5 in the *Premiere Switchers Manual* located on the supplied CD.



16x 8 Premiere Matrix Switcher



Lamp Illumination Step Sequence (16x8 Premiere Matrix Switcher shown)

For further information, refer to Chapters 3, 4, and 9 in the Premiere Switchers Manual located on the supplied CD.

Step 4 SYSTEM STARTUP

Verify the line-cord plug is a correct fit for the supply power receptacle. If not, call QuStream Customer Service for a possible replacement.

Apply power to the unit (see the Information note for 16x16 Switchers) by connecting the line-cord plug to a receptacle. Verify the lamp illumination sequence (see the Lamp Illumination Step Sequence below) and LED status (POWER LED is illuminated green and the amber COMM LED flashes on and off at intervals). GO TO STEP 5.

For the 16x16 Premiere Matrix Switcher configurations, both units should be plugged into a receptacle simultaneously or as close as practical to being simultaneously powered. If unable, plug in the expansion module first followed by the primary module (refer to Chapter 3 in the Premiere Manual located on the supplied CD).



Used only for the 16x16 Premiere Matrix Switcher Configuration

Unit Power Rating

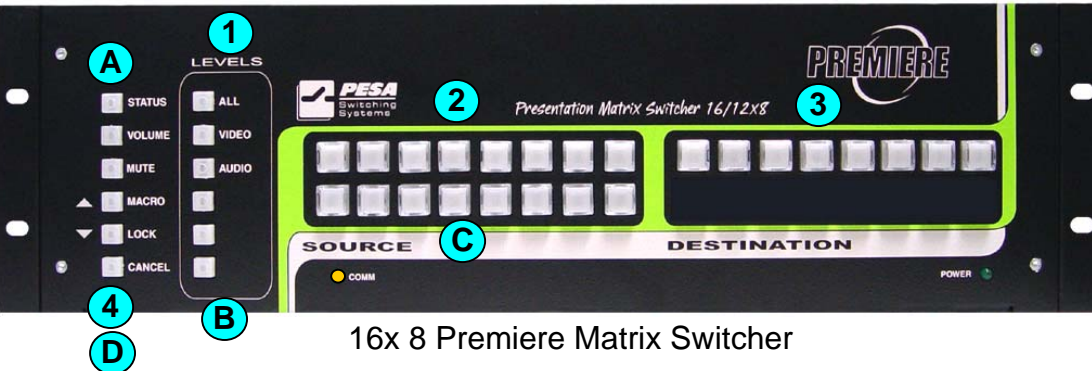
Power Cord

Step 5 TAKING A SWITCH

The following sequence is for Premiere Matrix Switchers with a front control panel. For systems without front control panels or for systems using the Backstage Control Graphic User Interface (GUI), refer to the manual (Chapter 5) located on the supplied CD.

TAKING A SWITCH:

1. Select a desired level (*All*, *Video*, or *Audio*) and press the corresponding button/key (the button illuminates steady-on).
2. Select a *Source* (input) and press the corresponding button. (The button illuminates and flashes. After 10 seconds, the *Cancel* button illuminates and flashes).
3. Select as many *Destinations* (outputs) as desired and press the corresponding button (each button illuminates steady-on and the switches are being taken as they are selected).
4. Press the *Cancel* button to exit the Take Switch mode (all buttons extinguish and the system retains the Take Switch command).



VERIFYING A TAKE SWITCH COMMAND:

- A. Press the *Status* button (the button illuminates steady-on).
- B. Press the *Level* button that corresponds to the performed Take Switch function (the button illuminates steady-on).
- C. Press the *Source* button that corresponds with the performed Take Switch function. (The *Source* button illuminates steady-on, the associated *Destination* buttons illuminate steady- on to verify the system status, and after 10 seconds, the *Cancel* button illuminates and flashes.)
- D. Press the *Cancel* button to exit the *Status* mode (all buttons extinguish and the system retains the last command).

NOTE: The default interface protocol configuration is the PESA mode. To change this configuration or for further information, refer to Chapter 5 in the Premiere Series Matrix Switchers Manual located on the supplied CD.

FINISH

Step 6 PREMIERE MANUAL CROSS-REFERENCES

CHAPTER 1: Introduction To The Premiere Series Matrix Switcher

(Includes: Product Overview, System Usage, Terminology, and QuStream Technical Support Contacts)

CHAPTER 2: Premiere Installation

(Includes: Unpacking, Desktop Installation, 19-inch Rack Installation, and Electrical Requirements)

CHAPTER 3: Premiere Configurations and User Controls

(Includes: Configurations, System/User Interface Connections, Connector Layouts, User Control Descriptions, and Front Panel Control Descriptions)

CHAPTER 4: Initial Setup, Startup, and Executing Switcher Commands

(Includes: Introduction, Pre-configurations, Initial Setup Sequence, Initial Startup Sequence, and Executing Switcher Commands)

CHAPTER 5: Graphical User Interface (GUI)

(Includes: Software Installation, PC and Switcher Interconnection, and Using the Backstage Control GUI)

CHAPTER 6: Input/Output Volume and Mute Controls

(Includes: Adjusting Volume levels from the Front Control Panel and/or The GUI, and Mute Function Operations.

CHAPTER 7: Network Configurations

(Includes: Configuring the Network, Accessing a remote Switcher from the Internet, and Web Control Interface and Commands)

CHAPTER 8: Basic Control Structure (BCS) Commands

(Includes: BCS Command Line Access, BCS Command Character Table, and Initiating a BCS Command)

CHAPTER 9: Premiere Service Policy

(Includes: Switcher Servicing, Return Material Authorization Policy, Warranty Statement, and Non-Warranty Support Policy)

CHAPTER 10: Premiere Specifications and Appendices

(Includes: QuStream Contacts, Factory Pre-Configuration Specifications, and Abbreviations/Acronyms/ Listing)

Definitions