

Step 1 SYSTEM REQUIREMENTS

- SOFT603 requires a PC running Microsoft Windows™ XP operating system, with a minimum of 512 Mb RAM. The entire application requires less than 10 Mb of disk space on a local drive.

Step 2 INSTALL SOFT603 APPLICATION TO HOST PC

- Insert SOFT603 CD into CD Drive of host PC.

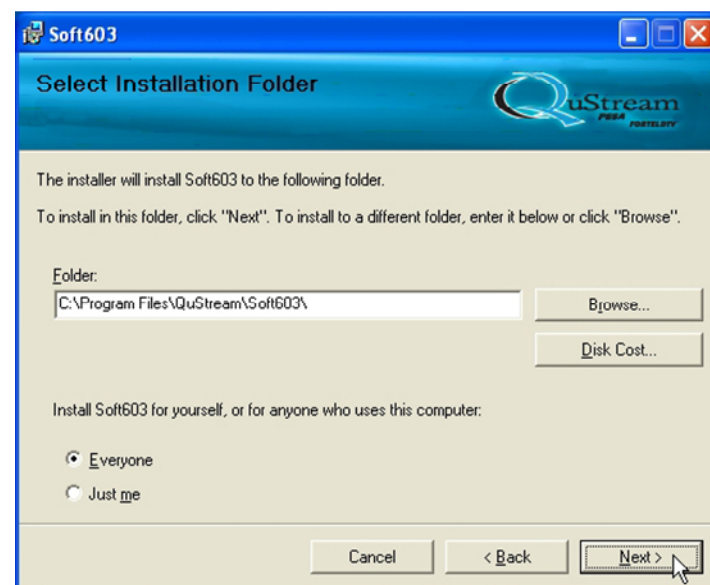
- Allow disk to initiate the auto-run function. When initialization is complete, the banner shown here is displayed on the desktop. Click **Next** to begin installation of the SOFT603 application.



- If auto-run does not automatically launch, navigate to directory of disk drive containing installation CD and double click on **setup.exe**. The banner should be displayed on the desktop. Click **Next** to begin installation.

- Click **Next** on the warning prompt to continue to installation destination page.

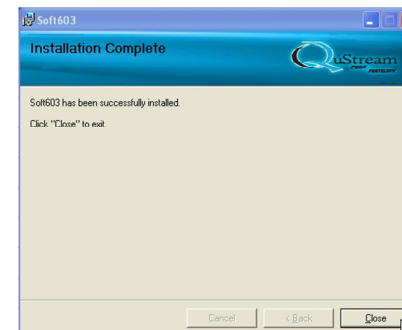
- By default auto-install creates installation folders shown here for the SOFT603 application. If you wish to install the software in a directory or folder other than the default, click **Browse** and navigate to destination. At bottom of prompt screen you are given the option of installing software to be available to everyone who uses the PC, or only to user performing installation. Click **Next** to begin installation.



- Read license agreement, and select **I Agree**, then click **Next** to continue.

- Click **Next** on installation confirmation page.

- During installation, the indicator bar tracks progress of software load. Upon completion of installation, the Installation Complete prompt is displayed.



- Click **Close** to exit the installation process. A shortcut icon to launch SOFT603 is automatically placed on desktop.

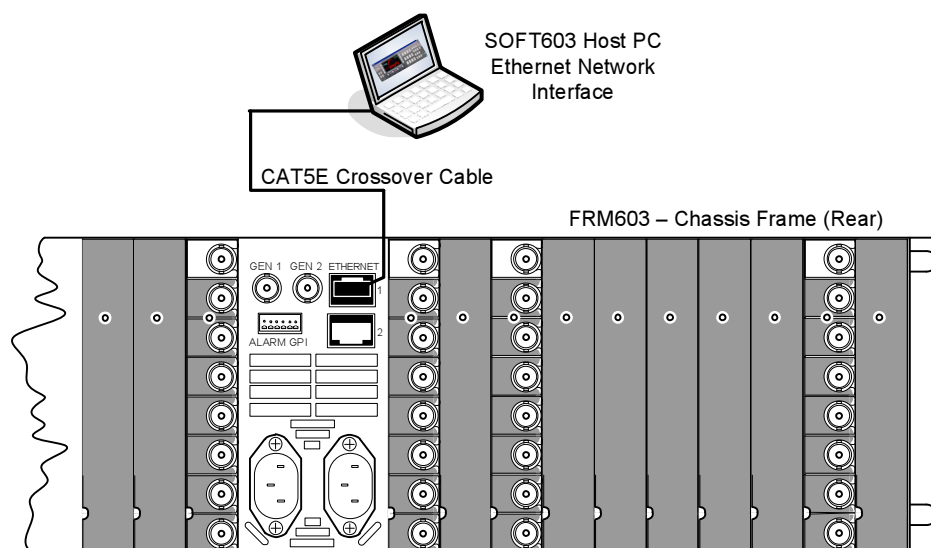
For further information, refer to Chapter 3 in the SOFT603 Technical Manual

Step 3 HARDWARE INSTALLATION

- Communication between the SOFT603 Host PC and an Integrity chassis frame is conducted over an Ethernet link. This link may be established directly between the host PC and chassis frame; or with multiple Integrity system components over the facility LAN.

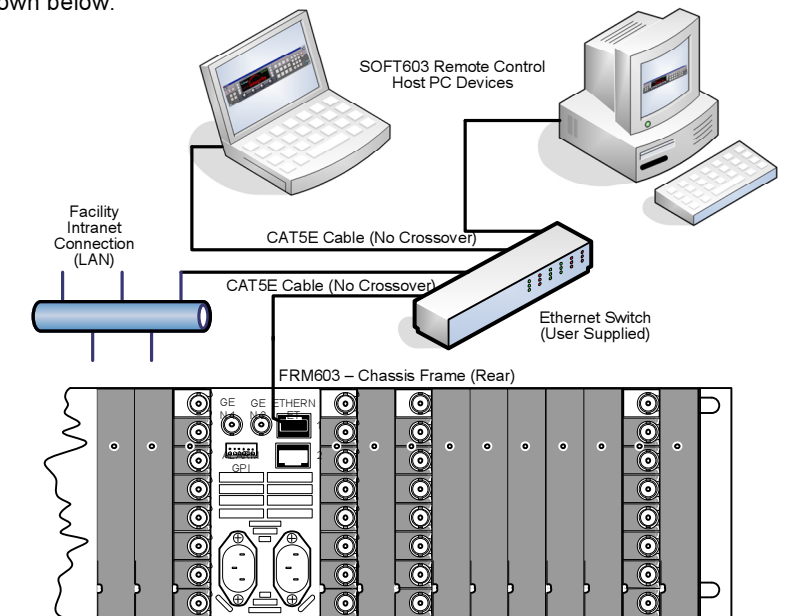
1 Host PC Connected Directly to Integrity Chassis Frame

- If your installation is using the SOFT603 program on a dedicated PC, in lieu of a hardware RCP-503 control panel, it is possible to connect the Ethernet port of the host PC directly to the Ethernet port of a single chassis frame. When using a dedicated PC as a single control panel, and a single chassis frame, use a crossover CAT5E interconnecting cable, configured as shown below. This illustration shows the rear panel of the FRM603 chassis frame as an example. Connection to the FRM-504 or FRM-501 chassis is the same as illustrated here.



2 NETWORKED HOST PC AND CHASSIS FRAME

- When multiple frames and control panels are used together, an Ethernet switch is required and used with standard Ethernet patch cables - crossover cable **should not** be used. Connect a port on the Ethernet switch to the Ethernet port on the SOFT603 host PC using an Ethernet patch cable. Connect a port on the Ethernet switch to the Ethernet port on each chassis frame in the system using an Ethernet patch cable. An example of a networked system with two control panel host PCs is shown below.



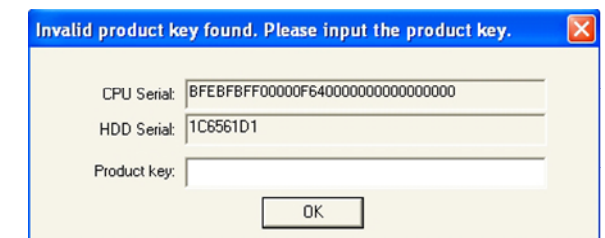
- Every host PC running SOFT603, every hardware control panel and every frame controller card in the Integrity chassis frame must be assigned a unique IP address on the facility network. In many installations, you will need to consult your facility network administrator when adding hardware to the network or when the IP address for any hardware must be changed.
- When using SOFT603, the Integrity chassis frame must be configured to communicate with the host PC using the IP address assigned to the host.

For further information, refer to Chapter 4 in the SOFT603 Technical Manual

Step 4 INITIAL STARTUP

1 ENTERING PRODUCT KEY

- Double click on desktop shortcut icon to start SOFT603 application.
- When you run SOFT603 application for the first time, you will receive the prompt to enter your **Product Key** as shown here.



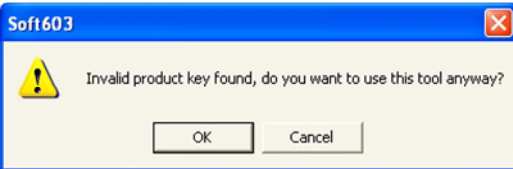
Step 4 Initial Startup (Continued)

- Product key must be obtained from Qustream Product Support team. When the correct key is entered the SOFT603 application automatically creates the key.ini file, stores the key for subsequent use and displays the "home" screen as shown here.



2 TEMPORARY USE OF SOFT603 WITHOUT PRODUCT KEY

- When installing SOFT603 without the product key, it is possible to use SOFT603, fully functional, on a temporary basis. Leave the **Product Key** field blank and click **OK** to continue.
- You will receive the prompt shown here. To continue running SOFT603, click **OK**. Click **Cancel** to abort the SOFT603 boot-up procedure. If you clicked OK, the SOFT603 control panel graphic is displayed as shown below with a warning that the software is unauthorized. The panel is fully functional on a temporary basis and can be used immediately.

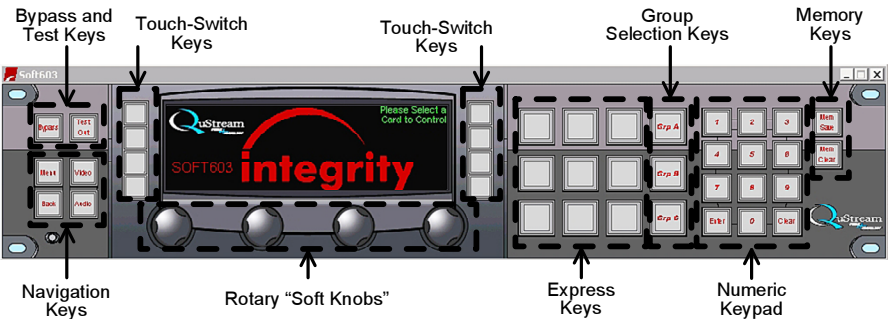


For further information, refer to Chapter 3 in the SOFT603 Technical Manual.

Step 5 OPERATION

1 PANEL LAYOUT

- Panel layout and functionality of the SOFT603, shown in the next column, is identical to the hardware RCP-503 panel. If you are familiar with the RCP503 panel you should be able to operate the SOFT603 immediately. For users not familiar with the hardware panel, a detailed description of the function of each panel key is provided in the SOFT603 Technical Manual.
- With the hardware panel, each key is a push-button, operated by pressing the switch. With the software application, each key is actuated by moving the cursor to the desired key and left clicking on the key icon.



- There are four rotary knobs on the hardware panel that can be set by turning the knob either clockwise or counterclockwise. These four controls are called "Soft Knobs" because the function of each is determined by software and displayed on the menu screen for various configuration screens. There are no physical stops on the knob in either direction. In the software control panel implementation, turning the "soft knob" is accomplished in one of two ways:

Move the cursor to the knob you wish to rotate and left click. With the left mouse button held down, drag the mouse to the right to rotate the knob clockwise, and move the mouse to the left to rotate the knob counterclockwise.

Move the cursor to the knob you wish to rotate and use the scroll wheel on the mouse to change the knob setting. Moving the scroll wheel forward moves the control clockwise, and moving the scroll wheel towards you moves the knob counterclockwise.

NOTE

Using the scroll wheel method is especially useful for making fine adjustments to settings.

2 BASIC OPERATIONS

- When the SOFT603 application is launched, it will initialize. During initialization, the software executes a discovery process to determine cards available for its control in your Integrity system frames. This process is complete when the Integrity logo appears on the display along with the select any card prompt, as shown here.



- Once the initialization process is complete, open the configuration screen by entering the access code [4][0][4][ENTER] on the numeric keypad.



ASSIGNING FRAMES AND CARDS TO GROUPS

- In order to use the SOFT603 control panel for system control, each processing card must be configured in order for it to be accessible by the control panel. This requires assigning each card you wish to control with the SOFT603 to a control group and assigning it a number within that group.
- The three large keys to the left of the numeric keypad are **Group Keys**, and are labeled Group A, B and C. It is not necessary for all cards in one frame to be assigned to the same group. The system is designed to provide flexibility in assigning any card in any frame to any keypad assignment.
- Access the configuration screen by pressing [4][0][4][ENTER].

Rotate the left knob to access a different card. Rotate the right two knobs to change the group and number assignment for the card. Press the BACK key to exit after programming a card or series of cards. It is not necessary to configure every card before using the ones already configured.

CONTROLLING INTEGRITY SERIES CARDS WITH THE SOFT603 CONTROL PANEL

- Cards which have been given a keypad assignment are accessed by pressing the following keystroke sequence: [GROUP][NUMBER][NUMBER][ENTER] or [GROUP][NUMBER][ENTER]. The main menu of the selected card opens in the display window unless an invalid keystroke sequence was pressed. Verify that the correct card alias is shown in the center of the display in large blue text. The group assignment will appear just above it in small blue text.
- From the main menu of the card you can access the various configuration and control menus. Configuration menus vary greatly from card to card, but the layout and control scheme is universal for all. For specific configuration or operating procedures for each card in the Integrity family, refer to the Technical Manual for the card.

ASSIGNING EXPRESS KEY MACROS

- Express Keys are the nine large pushbuttons to the left of the three Group Keys. Each Express Key may be used to gain one-touch access to a card without using the number pad or group keys; and the legend for each Express Key may be assigned so that the alias name for that card appears on its keycap. The programming sequence for SOFT603 macro keys is the same as for the RCP503. A step-by-step procedure is provided in Chapter 4 of the SOFT603 Technical Manual.

CHECKING PANEL INFORMATION

- A panel information screen provides readout of the software version installed in the panel, the panel IP address, the panel MAC address and the list of installed Board Description Files. Press [3][6][9][ENTER] to display the panel info screen. Press the **Back** key to exit

For further information, refer to Chapter 4 in the SOFT603 Technical Manual.

IN THE EVENT OF DIFFICULTY

Your SOFT603 package should include this Quick Start Guide and the installation disk containing the necessary files to install the software and an electronic file of the SOFT603 Technical Manual. If any components are missing or damaged, contact QuStream Customer Service by phone or e-mail.

If you experience any difficulty installing or operating the SOFT603 application, refer to the Troubleshooting Guide contained in Chapter 5 of the SOFT603 Technical Manual, or contact QuStream Customer Service.

Customer Service: (256) 726-9222
Toll Free: (800) 323-7372
Fax: (256) 726-9268
Email: service@qustream.com