

TECHNICAL BULLETIN

MVDA FUSE KIT UPGRADE

The Fuse Kit, part #81906516460, consists of a fuse board, #81906514344, and this technical bulletin, #81905902590.

PESA is upgrading early version MVDA frames. The backplane power jumper configuration does not allow adequate protection against overcurrent conditions. This may cause overloads on the PC board circuit traces resulting in internal shorts to the boards.

If you have one of the following MVDA frames, install the enclosed fuse board. Failure to do so may result in insufficient overload protection and damage to the frame PC board. This upgrade is required to keep the warranty in force.

The part number is located inside the front door on the far left.

PESA MVDA's Requiring Fuse Boards:

MVDA 2X2 Part # 81906510405

MVDA 1X3 Part # 81906511068

Installation Instructions

To install the Fuse Board:

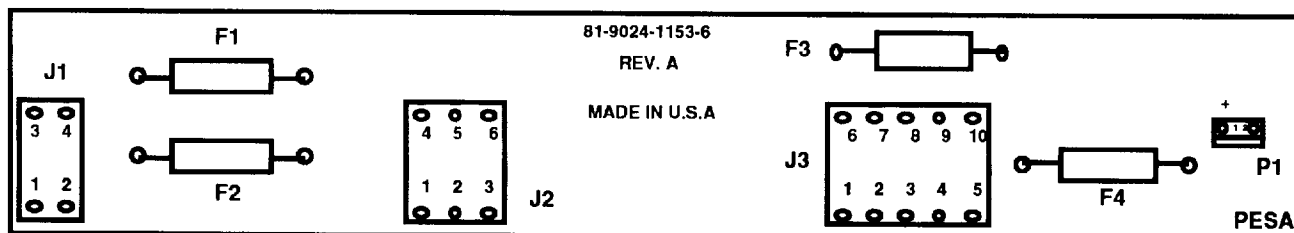
1. Disconnect power from the MVDA frame. Power to the frame is located on the rear of the unit through two 3-pin power connectors. If loop-thru power is used, disconnect **both** power cables. If the power loop-thru cannot be broken due to continuous operation, the fuse card can be installed with power applied. Exercise extreme care when removing the shunts and installing the fuse card. Shorting the pins on the PC board can cause sufficient arcing to destroy the functionality of the pins.
2. Open the front door of the MVDA frame and locate the power shunts on the far left of the frame. There are three types of connectors, a 4-pin, 6-pin, and 10-pin. **Remove all power shunts.** Refer to the shunt diagram on page 2.
3. Align the plug-in fuse board module with the 3 connectors. Press firmly into place. **DO NOT FORCE THE PLUG-IN BOARD.** If interference occurs, check that all pins are straight and shunts have been removed.
4. Install power cables.

TECHNICAL BULLETIN

Plug-In Fuse Card

The fuse card protects the MVDA frame from being damaged by a short circuit or other fault condition that might otherwise overload the frame. The fuse card is composed of four fuses each rated at 7 Amperes. Two are for the top half of the frame, and two identical fuses are for the bottom half. This prevents one fault from disabling the entire frame. Fuses F1 (+V) and F2 (-V) are associated with the top half of the frame. Fuses F3 (+V) and F4 (-V) are associated with the bottom half of the frame.

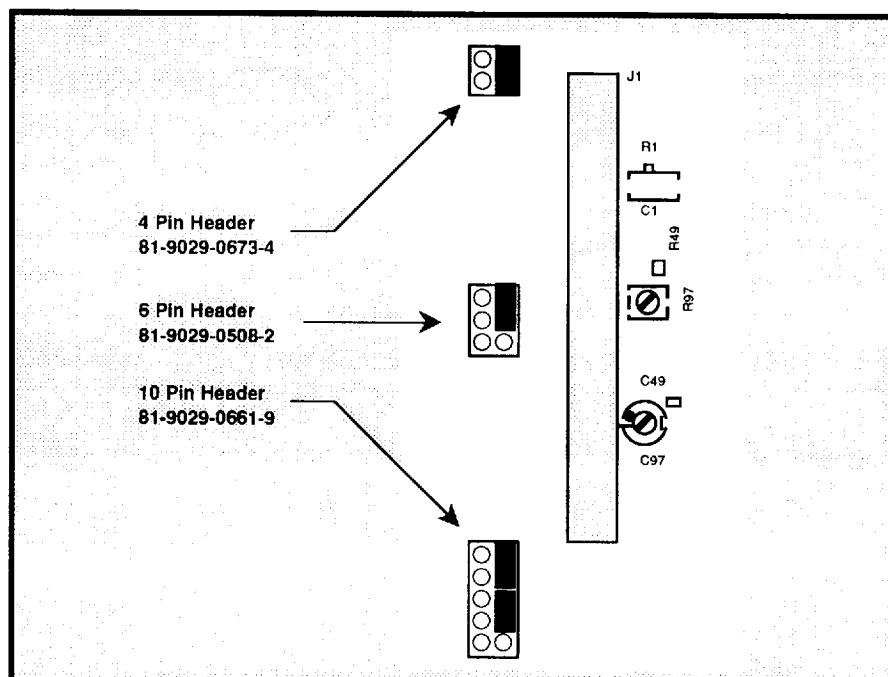
Power to the frame should be disconnected before removing or inserting the fuse card.



Plug-In Fuse Card

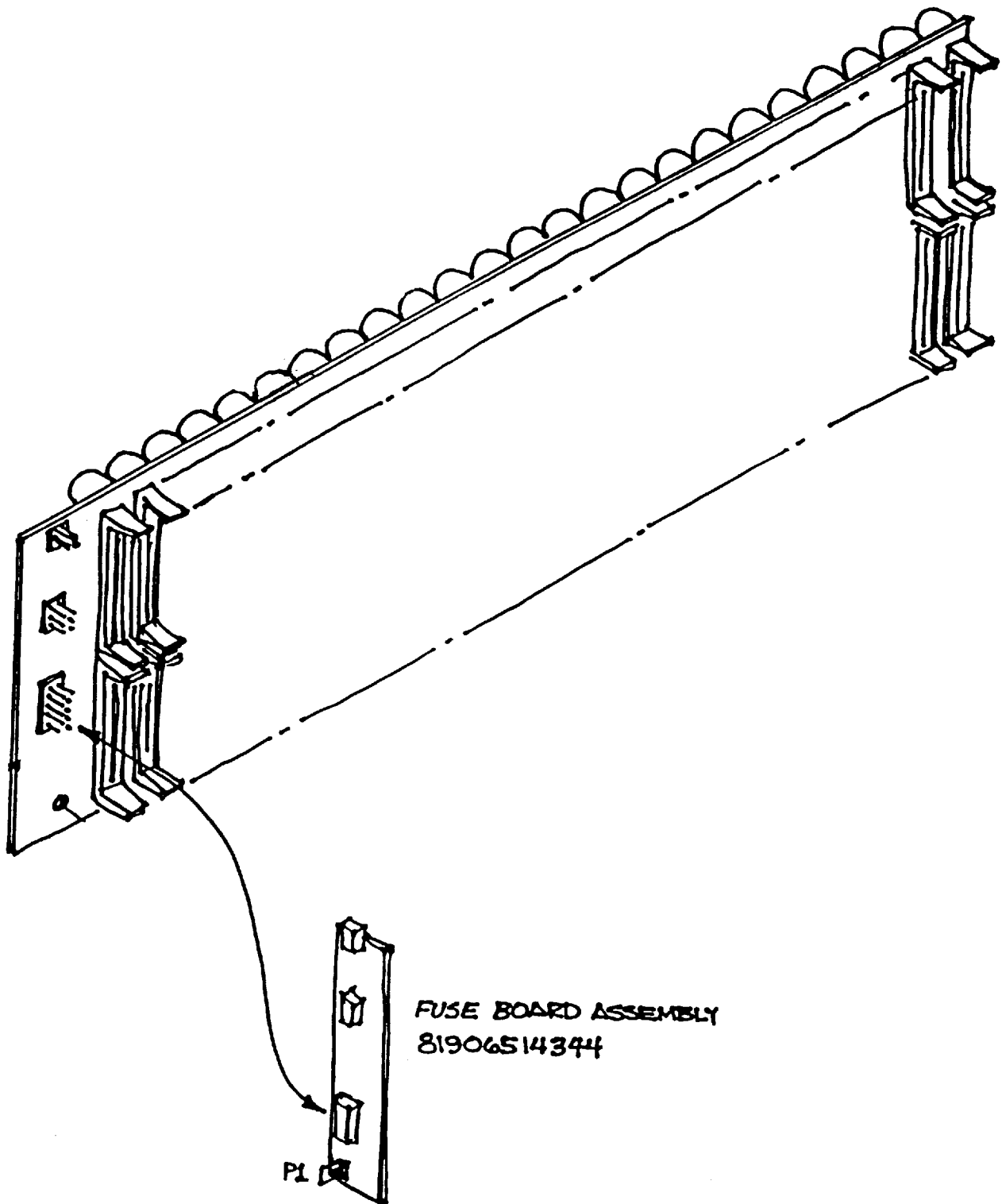
Shunt Location

Positioned on the far left side of the backplane assembly are three power headers: a 4-pin, 6-pin, and 10-pin. Four shunts are placed on these headers which must be removed before installing the fuse card.



Power Shunt Locations

TECHNICAL BULLETIN

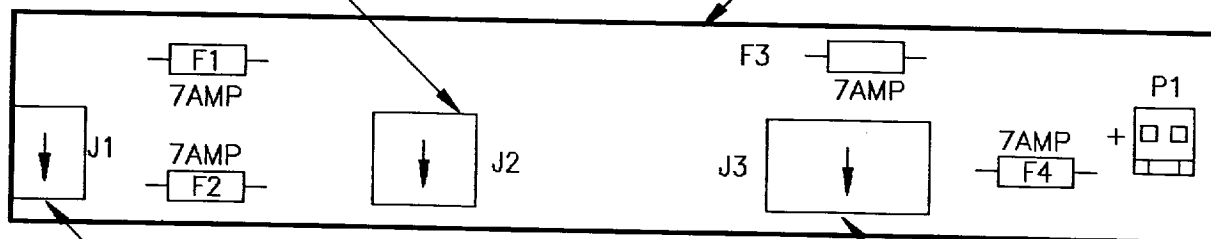


Detail for Fuse Board Installation

TECHNICAL BULLETIN

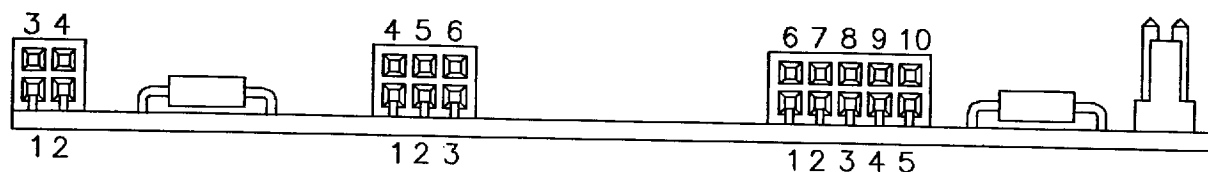
CONNECTOR, 2X3
RT. ANG. REC.
81-9029-0709-6

RAW PC BOARD
81-9024-1153-6



CONNECTOR, 2X5 RT. ANG. REC.
81-9029-0710-4

CONNECTOR, 2X2 RT. ANG. REC.
81-9029-0708-8

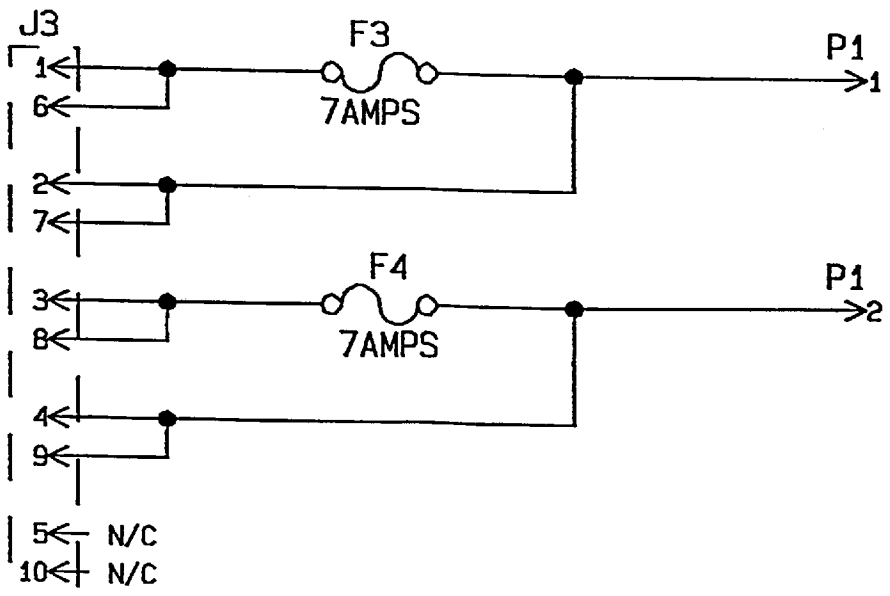
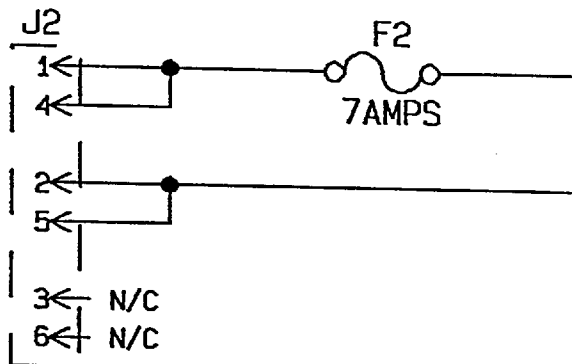
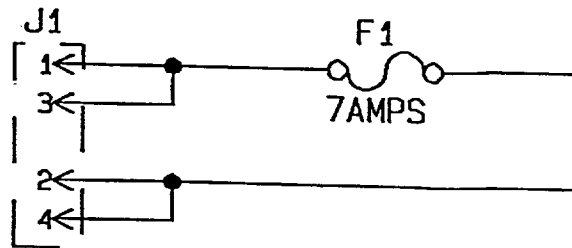


NOTES:

1. COMPONENTS TO BE PLACED ON NEAR SIDE, REF. DES. AND CIRCUITRY ARE ON FAR SIDE.
2. CONNECTORS SHOULD FACE FRONT AS INDICATED BY ARROWS.

Component Assembly - Fuse Board - CA25-1153

TECHNICAL BULLETIN



Schematic - Fuse Board - SC33-1153