

## Quick Installation Guide for Zeus III Intercom Matrix – 90007843XXX

### Parts List



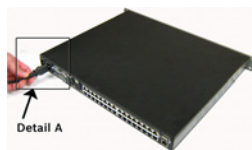
### Included Parts

- A. Zeus III unit (p/n 90007843000)
- B. Power Cord\*, US, 115V (2)  
(p/n 550024-013)
- C. USB Cable (p/n 600091)

User Manual  
(p/n 93507843000)

Warranty  
(p/n 38110-387)

\* Power Cord, European (550024-000)  
Power Cord, UK, 13A (550024-005)  
Zeus III unit without power cord (90007843-300)  
Zeus III unit UK (90007843-200)  
Zeus III unit EURO (90007843-100)



Detail A

### Instructions

To **power on the Zeus III unit**, do the following:

1. Connect the power cord **connector end** to the power module on the rear side of the Zeus III (see Detail A).
2. Connect the power cord **plug** to an electrical outlet.  
*The Zeus III starts its power up sequence. See the Zeus III user manual for the power up sequence description.*

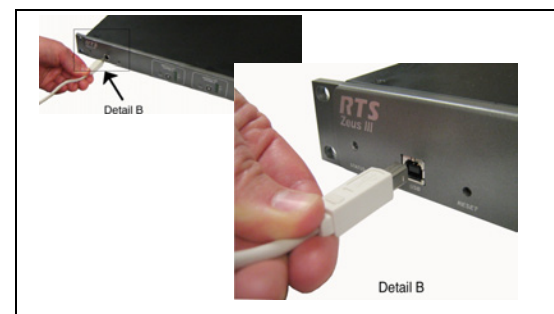
Note: Repeat **step 1** and **step 2** for redundant power supplies.

3. Configure the Zeus III in one of four (4) ways:
  - A. USB (page 1)
  - B. Serial (page 2)
  - C. Network (with Standard RJ-45 cable)(page 2)
  - D. Network (with RJ-45 Crossover cable)  
(page 3) (Used when configuring the Zeus III for the first time with no serial or USB port available)

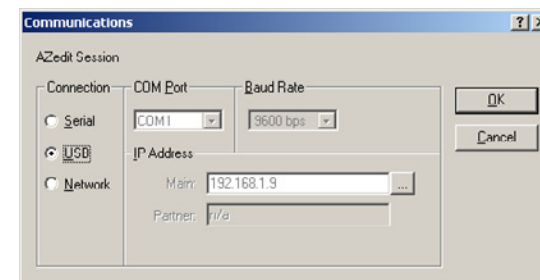
### USB Configuration

Note: If you are configuring a USB connection for the first time, you must manually navigate to the USB drivers at C:\Telex\AZedit\USB.

1. Attach the **supplied USB cable** to the USB Connector located on the front of the Zeus III.



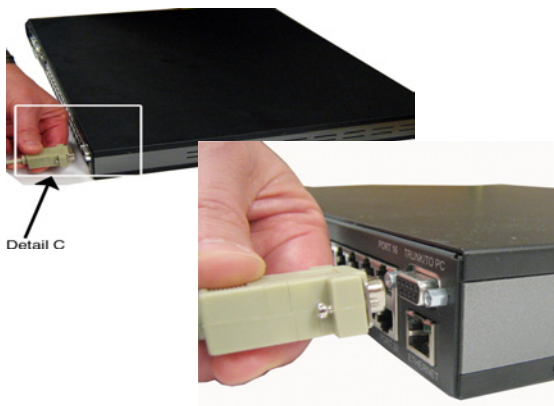
2. Attach the **other end of the USB cable** to any USB connector on the computer with AZedit loaded on it.
3. In AZedit, from the Options menu, select **Communications**.  
*The Communications window appears.*



4. Select the **USB** radio button.
5. Click **OK**.  
*The Zeus III is configured to connect to AZedit via USB.*

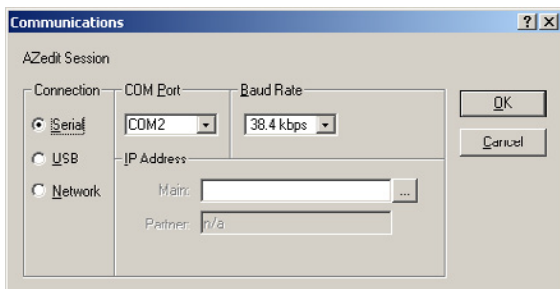
## Serial Configuration

1. Attach the **male end of the serial cable** to the Trunk/To PC connector on the rear side of the Zeus III.



Detail C

2. Attach the **female end of the serial cable** to any available serial connector on the computer with AZedit loaded on it.
3. In AZedit, from the Options menu, select **Communications**.  
*The Communications window appears.*

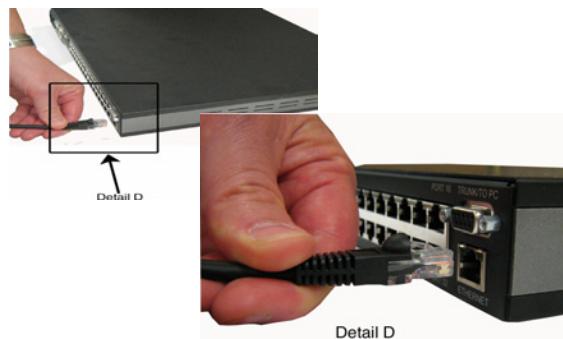


4. Select the **Serial** radio button.
5. Click **OK**.  
*The Zeus III is configured to connect to AZedit serially.*

## Ethernet Configuration – Standard RJ-45

Note: The straight RJ-45 cable assembly cannot be directly connected to the AZedit computer. It can only be used with a router or switch connected to the network.

1. Attach the **standard RJ-45 Ethernet** cable to your existing IP network using a network router or switch.



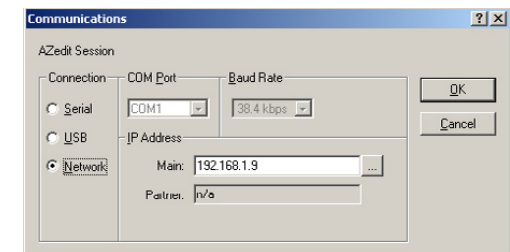
Detail D

2. Attach the **other end of the RJ-45 cable** to the Ethernet connector located on the rear of the Zeus III.

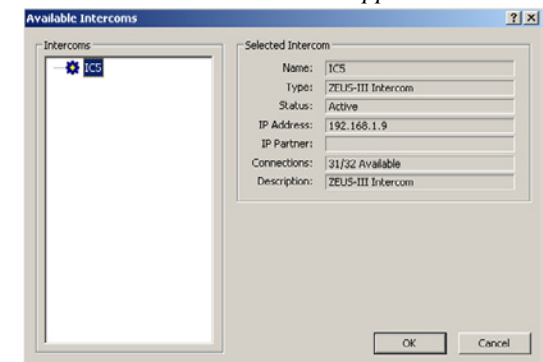
Note: By default, Zeus III is shipped with the IP Address 192.68.0.9 and the Network Mask 255.255.0.0. To change the IP Address, initially you must connect either serial or a USB cable. See “Initial IP Address Configuration” on page 3.

3. Click **Apply**.  
*The IP Address, Network Mask, and Gateway Address are changed.*
4. Click **Close**.  
*The Ethernet Settings window closes.*

5. From the Options menu, select **Communications**.  
*The Communications window appears.*



6. Select the **Network** radio button.
7. Click the **browse** button.  
*The Available Intercom window appears.*

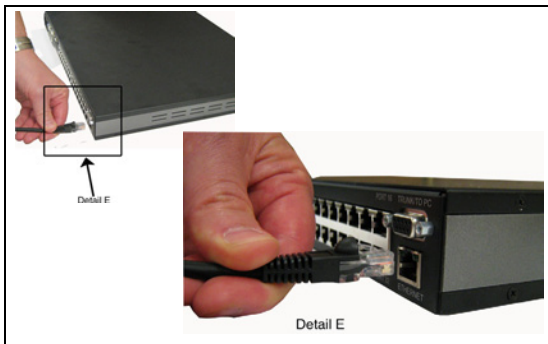


8. From the Intercoms list field, select the **Zeus III intercom** you want to connect to.
9. Click **OK**.  
*The Available Intercoms window closes.*
10. Click **OK**.  
*The Communications window closes. The Zeus III is configured for Ethernet operation with a standard RJ-45 cable.*

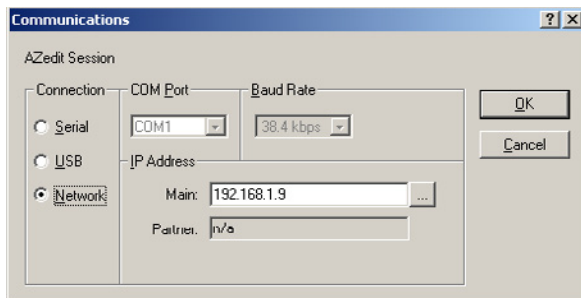
## Ethernet Configuration – RJ-45 Crossover

By default, the Zeus III is shipped with the IP Address 192.168.0.9, and the network Mask is 255.255.255.0. To change the IP Address initially, you must connect either serially or via USB.

1. Attach **one end of the RJ-45 crossover cable** to the Ethernet connector located on the rear of the Zeus III unit.



2. Attach the **other end of the RJ-45 crossover cable** to the Ethernet port of the computer with AZedit.
3. In AZedit, from the Options menu, select **Ethernet Setup**.  
*The Ethernet Setup window appears.*
4. From the Options menu, select **Communications**.  
*The Communications window appears.*



5. Select the **Network** radio button.

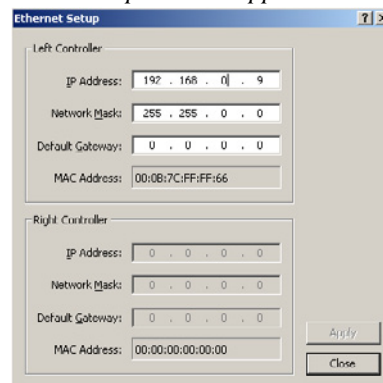
6. Click **OK**.

*The Communications window closes. The Zeus III is configured for Ethernet operation with a standard RJ-45 cable.*

## Initial IP Address Configuration

1. Connect to the **PC with AZedit** via USB or Serial cable.
2. In AZedit, from the Options menu, select **Ethernet Setup**.

*The Ethernet Setup window appears.*



3. In Netmask field, enter the **Netmask Address** for the Zeus III, if needed.
4. In the Gateway field, enter the **Gateway Address** for the Zeus III, if needed.
5. Click **Save**.  
*The configuration is saved.*
6. Remember to send your changes to the Matrix. To send changes to the matrix, from the edit menu, select **Send Changes**.

## Connectors

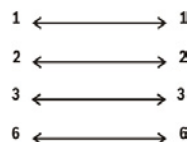
**Front USB Standard Type B**

Pin	Function
1	V_BUS
2	D-
3	D+
4	GND

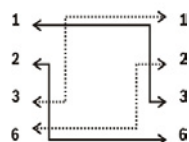
**Party Line (2) 3-Pin Female XLR**

Pin	RTS CH1	RTS CH2	Audiocom (balanced)	Clear Com (unbalanced)
1	Common	Common	Common	Common
2	Audio +CALL signal		CH1 Audio Low +Call	
3		Audio +CALL signal	CH1 Audio High +Call	Audio + DC Call

**RJ-45 Cat-5 Cable**



**RJ-45 Cat-5 Crossover Cable**



**Rear Keypanel Port (32) RJ-45(Cat5)**

Pin	Function
1	N/C
2	RS485 Data -
3	Audio Out +
4	Audio In +
5	Audio In -
6	Audio Out -
7	RS485 Data +
8	N/C

**Trunking/To PC Connection**

Pin	Function
1	RS485 Data - – Trunking
2	RS232 RX – Serial Data
3	RS232 TX – Serial Data
4	N/C
5	GND – Serial Data
6	RS485 Data + – Trunking
7	GND
8	N/C
9	N/C

**GPI DB-25 Female**

Pin	Function
1	GPI Input #1
2	GPI Input #2
3	GPI Input #3
4	GPI Input #4
5	GPI Input #5
6	GPI Input #6
7	GPI Input #7
8	GPI Input #8
9	GND
10	GND
11	GND
12	GND
13	GND
14	GPI Output #1
15	GPI Output #2
16	GPI Output #3
17	GPI Output #4
18	GPI Output #5
19	GPI Output #6
20	GPI Output #7
21	GPI Output #8
22	GND
23	GND
24	GND
25	GND