

Figure 13. Single-Pair Data Cable

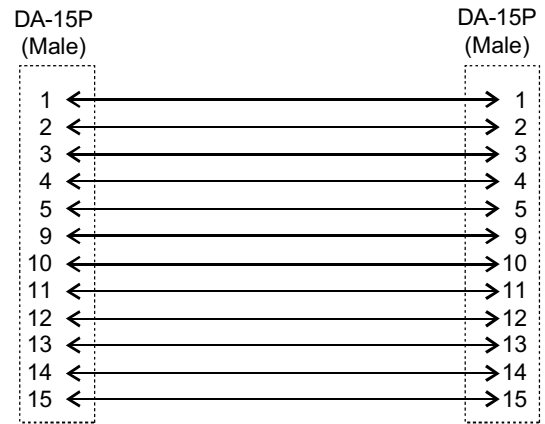


Figure 15. 15-Pin Data Cable

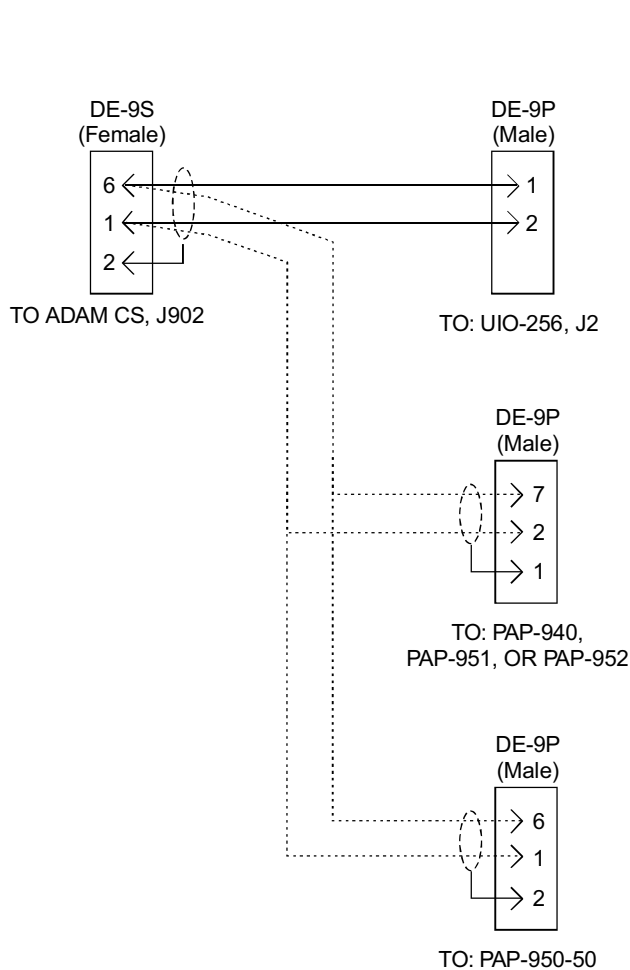


Figure 14. Cable for Parallel Connection of a UIO-256 and a Program Assign Panel

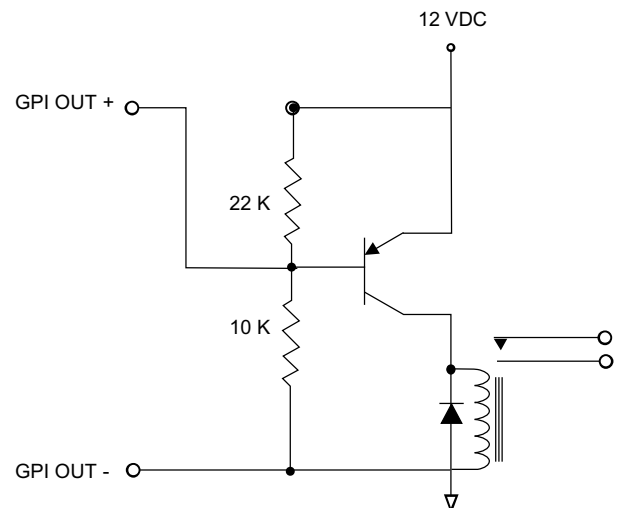


Figure 16. Using an ADAM CS GPI Output to Operate a Relay (See Table I for GPI Connector Pin-out)

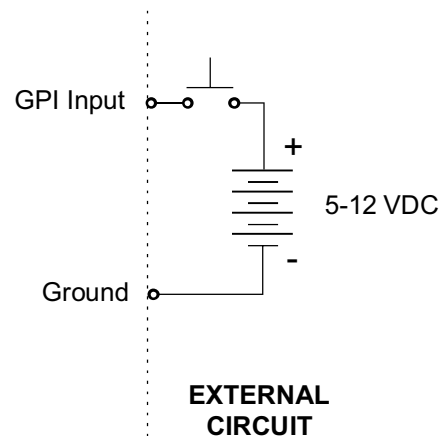


Figure 17. Using an ADAM CS GPI Input (See Table I for GPI Connector Pin-out)

Table 4. CDP-950 intercom Range Selection

Ports Controlled *	DIP Switch Number				
	4	5	6	7	8
#1 only	Open	Closed	Closed	Closed	Closed
#1 & #2	Closed	Open	Closed	Closed	Closed
#1 - #3	Open	Open	Closed	Closed	Closed
#1 - #4	Closed	Closed	Open	Closed	Closed
#1 - #5	Open	Closed	Open	Closed	Closed
#1 - #6	Closed	Open	Open	Closed	Closed
#1 - #7	Open	Open	Open	Closed	Closed
#1 - #8	Closed	Closed	Closed	Open	Closed
#2 - #8	Closed	Open	Closed	Closed	Open
#3 - #8	Open	Open	Closed	Closed	Open
#4 - #8	Closed	Closed	Open	Closed	Open
#5 - #8	Open	Closed	Open	Closed	Open
#6 - #8	Closed	Open	Open	Closed	Open
#7 - #8	Open	Open	Open	Closed	Open
#8 only	Closed	Closed	Closed	Open	Open
* #1 refers to the lowest-numbered port on any given Audio Input/Output Card; #8 refers to the highest.					

Table 5. Program Assign Panel DIP Switch Settings for Panel Number

Panel Number	Switch #1	Switch #2
1 *	Open	Open
2	Closed	Open
3	Open	Closed
4	Closed	Closed
* Default		

Table 6. Program Assign Panel DIP Switch Setting for IFB Range

IFB Range	Switch #3
Low range	Open
High Range	Closed

Table 7. ADAM CS, J903 Connector Pin-out

Pin No.	Function
1	Digital (GPI) Input #1 High
2	Digital (GPI) Input #2 High
3	Digital (GPI) Input #3 High
4	Digital (GPI) Input #4 High
5	Digital (GPI) Input #5 High
6	Digital (GPI) Input #6 High
7	Digital (GPI) Input #7 High
8	Digital (GPI) Input #8 High
9	Ground
10	Ground
11	Ground
12	Ground
13	Ground
14	Digital (GPI) Out #1
15	Digital (GPI) Out #2
16	Digital (GPI) Out #3
17	Digital (GPI) Out #4
18	Digital (GPI) Out #5
19	Digital (GPI) Out #6
20	Digital (GPI) Out #7
21	Digital (GPI) Out #8
22	Ground
23	Ground
24	Ground
25	Ground

Use any convenient ground pin for each digital input and digital output.

This document was created with Win2PDF available at <http://www.win2pdf.com>.
The unregistered version of Win2PDF is for evaluation or non-commercial use only.
This page will not be added after purchasing Win2PDF.