

NOTES:

2	SHEET	SHEET
	REV.	REVISION

TO CHANGE THE TALK BUTTON ON THE WM-1000/WM-2000 FROM MOMENTARY ONLY TO MOMENTARY/LATCHING. TWO COMPONENTS WILL NEED TO BE REMOVED. A CAPACITOR (C1) WILL NEED TO BE REMOVED FROM THE FRONT PANEL PC BOARD AND A TRANSISTOR (Q5) WILL NEED TO BE REMOVED FROM THE MIDDLE AUDIO PC BOARD. (THIS CHANGE ALSO APPLIES TO THE AUDIOCOM SPEAKER STATIONS).

			1	1	15		400109-025	LABEL
			1	1	14		90207323-000	CONNECTOR ASSY HEADSET
			1		13		90707621-004	ELEC. WALL PLATE. 2 CHANNEL
			4	4	12		51832-006	SPACER. PLASTIC. .125" LONG
			4	4	11		585024-001	SPACER. RND. MALE/FEMALE. .500"
			4	4	10		50014-002	WASHER. INTERNAL TOOTH LOCK No. 4
			4	4	9		51845-038	SCREW. 4-40 X 1/4"
			4	4	8		80660-565	SPACER. HEX.. THREADED. 4-40
			1		7		19067281-01	KEYPAD
			1	1	6		19067281-00	KEYPAD
			1	1	5		700123-002	KNOB
			1	1	4		90307632100	AUDIO PC BOARD No. 2
			1	1	3		90307621100	AUDIO PC BOARD No. 1
			1	1	2		90307620100	FRONT PANEL PC BOARD
			1	1	1		90707621-000	ELEC. WALL PLATE. 1 CHANNEL

-004	-003	-002	-001	-000	ITEM	REF.	PART NUMBER	DESCRIPTION
QTY.	QTY.	QTY.	QTY.	QTY.	NO.	DESIG.		

LIST OF MATERIALS

UNSPECIFIED LIMITS OF TOLERANCE  
STRAIGHTNESS AND/OR FLATNESS .005 IN./1 IN.  
CONCENTRICITY .010 TIR  
ANGLES ±1/2° BENDS ±2°  
UNMARKED ANGLES, BENDS AND INTERSECTIONS 90°  
THREADS- EXT. CLASS 2A INT. CLASS 2B  
MOLD FINISH: SPI-SPE NO 3  
DRAFT: 2°

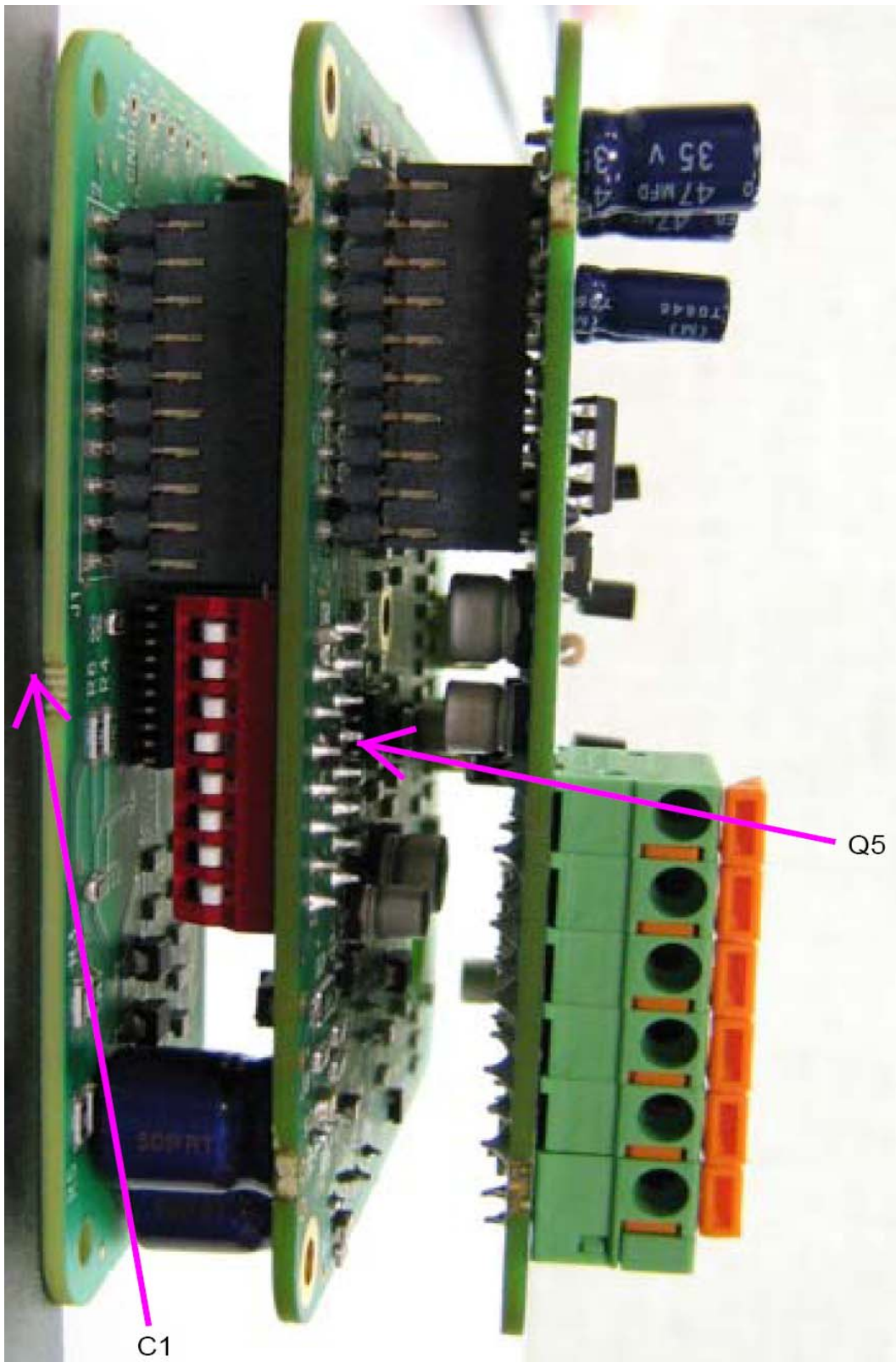
DR dk CK APP  
DATE 5-96 SCALE 1:1  
DO NOT SCALE DRAWING  
**TELEX**  
MINNEAPOLIS, MINNESOTA

TITLE  
**WALL MOUNT STATION**  
SIZE DWG. NO. 90107621  
SHT 1 OF 1  
PLANT DIST. B.E.

CAD SYSTEM: EUCLID3  
PROJECT: AUDIOCOM  
SUBPROJECT: SPEAKERS  
OBJECT: EXPWLLMNTD

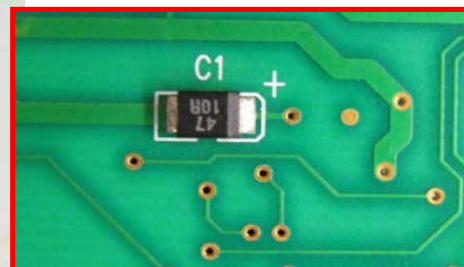
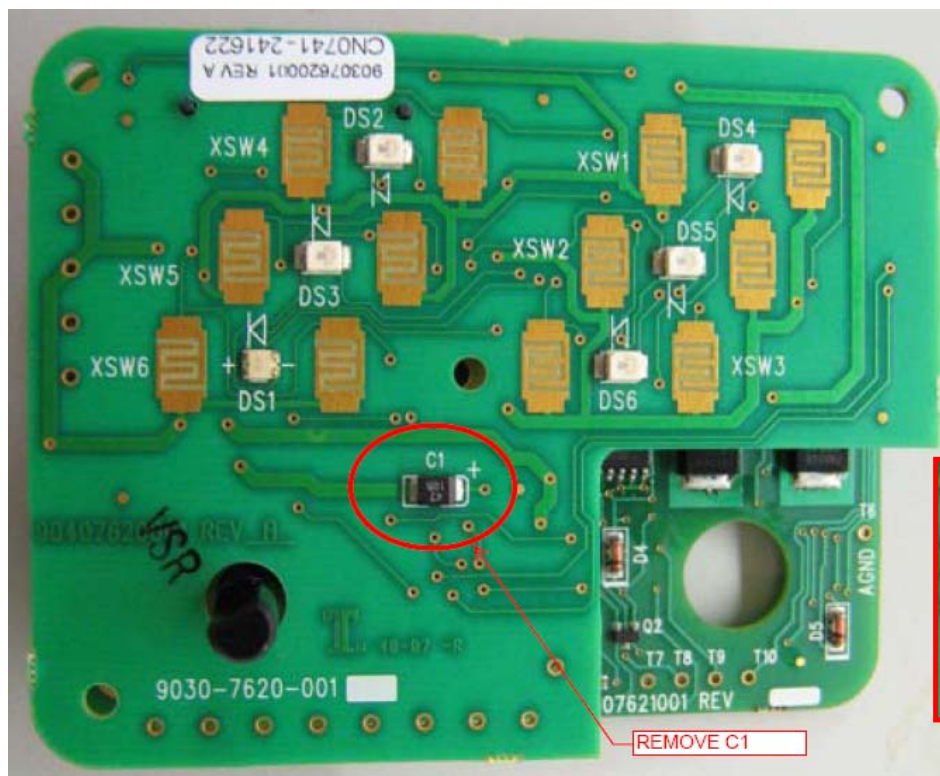
WM2000	
WM1000	90007621
MODEL	NEXT ASS'Y

THIS PHOTO SHOWS THE PC BOARD STACK FOR THE SPEAKER STATION. THE PC BOARD TO THE LEFT (FRONT PANEL PC BOARD) AND THE MIDDLE PC BOARD (MIDDLE AUDIO PC BOARD) WILL HAVE ONE COMPONENT REMOVED FROM EACH PC BOARD AS NOTED BELOW.





FRONT PANEL AUDIO PC BOARD: LOCATE AND REMOVE C1



MIDDLE AUDIO PC BOARD, LOCATE AND REMOVE Q5

