

Figure 13. Single-Pair Data Cable

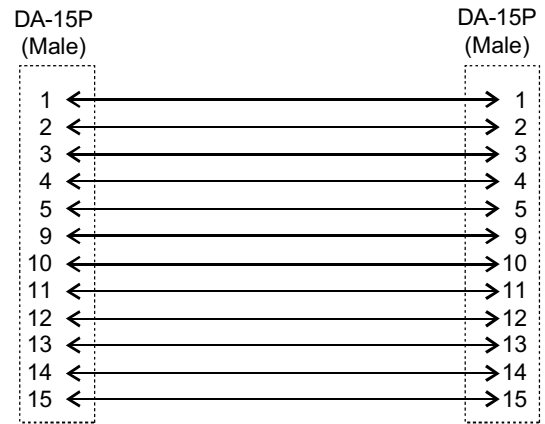


Figure 15. 15-Pin Data Cable

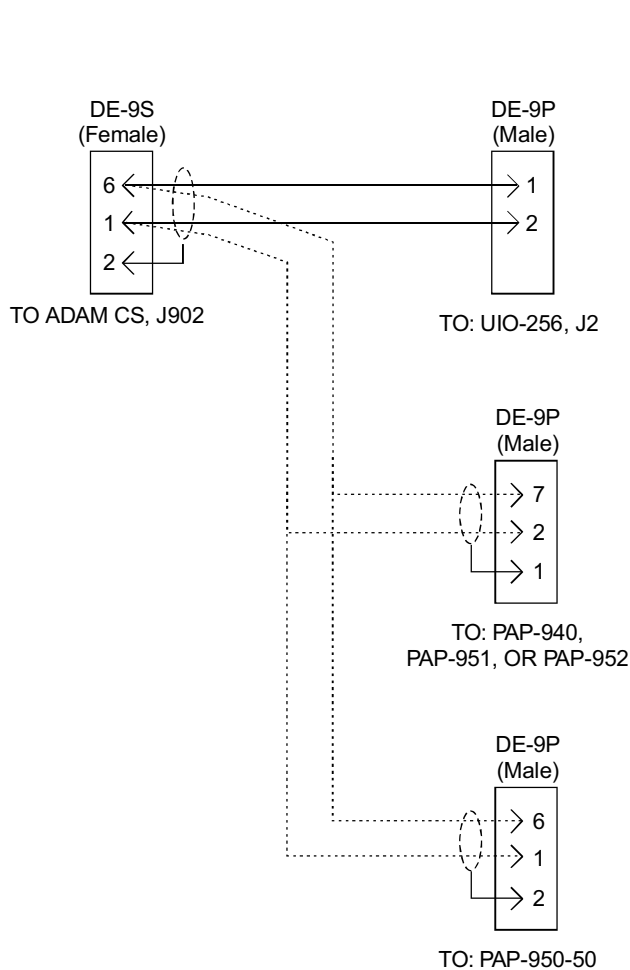


Figure 14. Cable for Parallel Connection of a UIO-256 and a Program Assign Panel

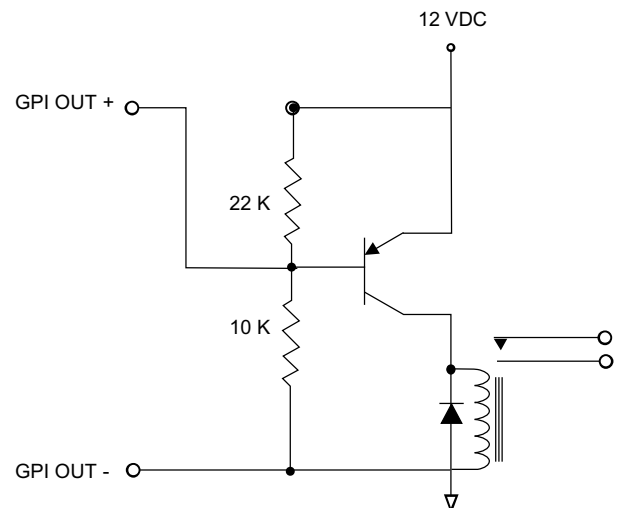


Figure 16. Using an ADAM CS GPI Output to Operate a Relay (See Table I for GPI Connector Pin-out)

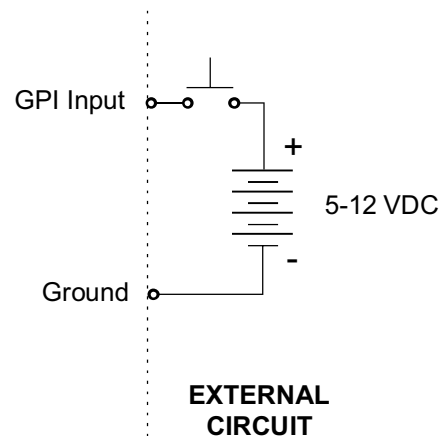


Figure 17. Using an ADAM CS GPI Input (See Table I for GPI Connector Pin-out)

This document was created with Win2PDF available at <http://www.win2pdf.com>.
The unregistered version of Win2PDF is for evaluation or non-commercial use only.
This page will not be added after purchasing Win2PDF.