



Vision
UPGRADE NOTES
v15.0a

Document Information

- Ross Part Number: **4800DR-500-15.0A**
- Release Date: **July, 2012**. Printed in Canada

The information contained in this document is subject to change without notice or obligation.

Copyright

© **2012 Ross Video Limited**. All rights reserved.

Contents of this publication may not be reproduced in any form without the written permission of Ross Video Limited. Reproduction or reverse engineering of copyrighted software is prohibited.


Patents

This product is protected by the following US Patents: 4,205,346; 5,115,314; 5,280,346; 5,561,404; 7,034,886; 7,508,455; 7,602,446; 7,834,886; 7,914,332. This product is protected by the following Canadian Patents: 2039277; 1237518; 1127289. Other patents pending.

Notice

The material in this document is furnished for informational use only. It is subject to change without notice and should not be construed as commitment by Ross Video Limited. Ross Video Limited assumes no responsibility or liability for errors or inaccuracies that may appear in this document.

Trademarks

-  is a trademark of Ross Video Limited.
- Ross, ROSS, ROSS®, MLE, Vision, Octane, Carbonite, CrossOver, CrossOver Solo, CrossOver Studio, Squeeze & Tease, Squeeze & Tease WARP, OverDrive, RossGear, openGear, DashBoard Control System, SoftMetal, and XPression are registered and unregistered trademarks of Ross Video Limited.
- Windows is a registered trademark of Microsoft Corporation in the United States and other countries.
- All other product names and any registered and unregistered trademarks mentioned in this document are used for identification purposes only and remain the exclusive property of their respective owners.

Feature Enhancements

A number of features have been added, or updated, to this version of software. This section provides a brief introduction to these features, and how to use them.

Audio Fader Module

The Audio Control Module allows you to map audio channels, or groups, from an audio mixer to any of the audio faders on the Audio Control Module.

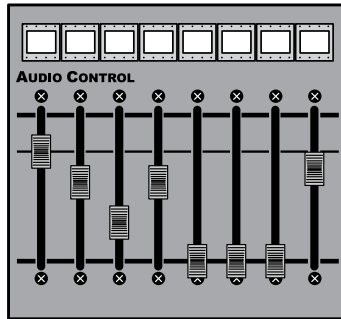


Figure 1: Audio Control Module

When an audio channel, or group, is assigned to a slider, the source name for that audio channel is shown in the mnemonic above the audio fader. Audio channels, or groups, can be dynamically assigned to audio faders with a custom control.

The color of the mnemonic above each audio fader indicates the state of the audio channel, or group, assigned to the fader.

- **Orange** — Indicates that a channel assigned to that fader is on-air.
- **Yellow** — Indicates that all channels assigned to that fader are off-air.

To set up the Audio Control Module, you must first assign each Audio Control Module to a panel row. Once the Audio Control Module is assigned to a panel row you can assign audio channels to the audio faders.

To Assign Audio Fader Maps

1. Press **HOME > Setup > Installation > More > Audio > Audio Fader Map**.
2. Use the **Fader** knob to select the audio fader that you want to assign an audio channel to.
3. Use the **Audio Source** knob to select the audio source that you want to assign to the audio fader.

- **NONE** — Select this option to not assign an audio channel to the selected audio fader.
- **Chan X** — Select this option to assign an audio channel to the selected audio fader.
- **Group X** — Select this option to assign an audio group to the selected audio fader.
- **Floating** — Select this option to have the switcher dynamically assign the audio channel, or group, that is on-air to the audio fader. Audio channel assignment starts with the lowest number channel that is on-air.
- **Master** — Select this option to assign the master level to the audio fader.

Copy and Paste Keyframes

You can now copy or cut a keyframe and paste it into a different location in the same or a different sequence. The keyframe is inserted after the selected keyframe when you paste.

To Copy and Paste a Keyframe

1. Load the sequence you want to overwrite the keyframe for.
2. Press the **DVE** quick navigation button.
3. Press **Sequence > More > More**.
4. Use the **Previous Keyframe** and **Next Keyframe** buttons to select the keyframe that you want to cut or copy.
5. Press **Cut Keyframe** or **Copy Keyframe**.
6. Use the **Previous Keyframe** and **Next Keyframe** buttons to select the location you want to paste the keyframe. You can also load another sequence and paste the keyframe into it. The keyframe will be inserted after the selected keyframe.
7. Press **Paste Keyframe** to insert the keyframe after the selected keyframe.

Independent Key Transitions

Keys can now be transitioned independently using the dedicated key transition buttons on the Keyers Module. This allows you to dissolve keys on/off-air while the fader is off-limit, or an Auto Transition is in progress from the Transition Module.

Keep the following in mind when performing independent key transitions:

- Only dissolves or cuts can be used for an independent key transition.
- If the key is part of the next transition, the key will be dissolved off-air and is removed from the next transition. This applies even if the key was not on-air.
- Independent key transitions are performed at the key rate, and not the MLE rate.
- Each keyer has an independent key rate.
- This feature is not compatible with OverDrive and is disabled when Editor is enabled.

Memory Text

As well as names, memories can be given descriptions that are shown on the Memories Setup Menu. These descriptions and names can be copied from one MLE to another.

To Assign a Description to a Memory

Tip: Press **Copy Description & Name to All MLEs** to copy the current description and memory name to the same memory register on all MLEs. You cannot copy the description to a locked memory register.

1. Press **HOME > Attributes > Memories Setup**.
2. Use the **MLE** knob to select the MLE that you want to add a description to.
3. Use the **Memory** knob to select the memory register on the selected MLE that you want to add a description to.
4. Press **Edit Description**.
5. Enter a description for the memory.
6. Press **Accept**.

Menu Updates

The menu system on the switcher has been updated to place the **Setup** menu on the first page of the **Main Menu**. Other updates include the move of the **Preview Overlay** and **Aux Bus** menus to the **Effects** menu.

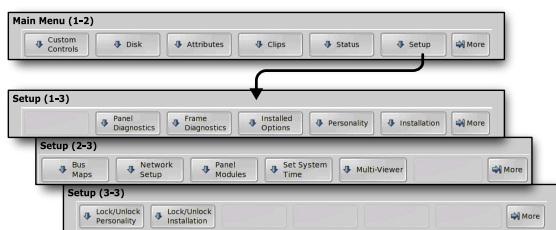


Figure 2: Setup Menu Navigation

Multiple Shift Bus Maps

The Bus Maps have been improved to include multiple shifted buses. You can now assign up to seven shift buttons to your top level bus map, allowing for eight total mappings per bus map.

To Set Up a Multiple Shift Bus Map

1. Press **HOME** > **Setup** > **More** > **Bus Maps** > **Edit**.
2. Use the **Map** knob to select the Bus Map you want to edit. The default Bus Map cannot be edited.
3. Select the button on the shift level that you want to assign a video signal to. Use the middle knob to scroll the list. The button lights on the program bus of all panel rows.
4. Use the **Source** knob to select **SHIFT X** and assign the Shift function to the selected crosspoint button, where *X* refers to the shift level.

Tip: Press **Insert** to insert a source at the selected button and shift the remaining sources to the right. Press **Delete** to delete a source at the selected button and shift the remaining sources to the left. Press **Clear** to remove the source from the selected button and not shift the remaining sources. **None** is selected for the cleared buttons and the last button when a source is deleted.

5. Press **HOME** > **Confirm**.

OverDrive Custom Control

A number of custom control have been added to the Insert Special - Special - OverDrive list to trigger events in OverDrive.

- **Take & Prep** — The Take & Prepare Next custom control allows you to tell OverDrive to take to current shot on-air and prepare the next shot in the rundown.
- **Prep Next** — The Prepare Next custom control allows you to tell OverDrive to prepare the next shot in the rundown.

- **Prep Prev** — The Prepare Previous custom control allows you to tell OverDrive to prepare the previous shot in the rundown.
- **Prep CC** — The Prepared CC custom control allows you to tell OverDrive to run one of the prepared CC buttons on rundown control. The buttons are numbered 1-6.
 - Use the **CC** knob to select the custom control you want to run.
- **On-Air CC** — The On-Air CC custom control allows you to tell OverDrive to run one of the on-air CC buttons on rundown control. The buttons are numbered 1-6.
 - Use the **CC** knob to select the custom control you want to run.
- **Transition** — The Transition custom control allows you to tell OverDrive to activate a particular button on rundown control. The buttons are numbered 1-4.
 - Use the **Trans** knob to select transition rate.
- **Rundown** — The Rundown custom control allows you to tell OverDrive to run a selected event in a rundown.
 - Use the **Cmd** knob to select the command.

Satellite Panel Server Control

You can now control a video serve, over VDCP, from a satellite control panel, as well as from the master control panel. You must select the control panel that the video server is connected to from the ExtraOptions of the video server.

Split Keys

The Split Key functionality has been changed to allow you to assign a different alpha source for a key, as opposed to the video.

To Perform a Split Key

1. Set up your key as usual.
2. Ensure that the Keyers Module is assigned to the Keyer that you want to perform the split key on.
3. Press and hold the **AUTO SELECT** (or **SELF KEY**) button on the Keyers Module.
4. Select the video source that you want to use as the new alpha on the key bus.
5. Release both buttons.
6. Fine tune the key as required.

New Devices Supported

Support for the following devices or features was added for this version of software:

- **Ross Robotics Furio Robo** — Support for this device was added as a FlexCAM device.
- **Merging Technologies Ovation Media Server** — Support for this device was added as a RAP device.
- **Yamaha 02R96** — Support for this device was added for using a MIDI interface.
- **Audio Mute Custom Controls** — Custom controls have been added to mute or un-mute an audio channel or group.
- **Remote Aux Panels (RCP-NK Series)** — Support for the Ross Routing Systems RCP-NK1, RCP-NKM, and RCP-NKQ remote control panels was added. This allows you to integrate the switcher into your existing Ross Routing system as a router level being controlled from one of the router remote control panels.

Known Issues and Limitations

Keep these notes in mind when upgrading your switcher to this version of software. Contact Ross Video Technical Support if you have any questions about performing a software upgrade.

External Devices

The following issues have been identified when working with external devices:

- **TargetMachine Settings** — Check all TargetMachine extra option settings after performing an upgrade. Extra option settings may revert to default values after an upgrade.
- **Video Servers (VDCP)** — You may experience communication problems after performing an upgrade. Please verify the channel and sub address settings for the video server on the BNC Menu. These values must match the settings on the video server you are trying to control.
- **EVS maXS** — If you experience pausing during clip playback, perform the following procedure whenever the Vision control panel is restarted:
 1. Set the **Port Cmd** option to **Yes**.
 2. On any bus, select each crosspoint that is associated with an EVS maXS channel.
 3. Set the **Port Cmd** option to **No**.
- **Avid AirSpeed and OverDrive®** — If you are using the Avid AirSpeed Video Server with the OverDrive Production Control System, you must set the Playback Mode to PB from the Extra Options on the Communications Menu 1-2 on the switcher.
- **Video Servers, LoopRecueTime** — The minimum LoopRecueTime from the Extra Options Menu has been lowered to 1 frame, instead of 7. The default value for the Ross Video SoftMetal™ Video Server has been lowered to 2.
- **SoftMetal Video Server, version 4.3** — If you upgrade your SoftMetal Video Server to version 4.3, or higher, you must set the TargetMachine on the Communications Menu of the switcher to Ross SMS4.3 for proper communications.
- **GVG Profile Video Server, Looping** — The GVG Profile Video Server does not support Looping at this time. Turning looping on may cause undesired video aberrations when the loop is performed.
- **Audio Memory Custom Control** — The Euphonix Audio Mixer does not support Audio Memory Custom Controls at this time.

- **Harris Inscribe CG Custom Controls** — When you create a custom control for the Inscribe, you cannot include Select Effect or Run Effects commands.
- **Harris Inscribe Before Version 5.0** — If the Inscribe is set to before 5.0 on the Communications Menu, the switcher may stop loading pages on the CG correctly. Setting the Inscribe to 5.0 or later, confirming, and then back to before 5.0 should clear the problem.
- **Harris Inscribe G-Scribe Strata Layers** — For the G-Scribe, you do not need to set the Strata Layers, the software will configure this automatically.
- **Robotic Camera Control and Editors/OverDrive** — If you are using the Robotic Camera Control Menu while the Editor Remote Enable is active, you may experience menu errors.
- **FlexDevice Drivers** — If there is a FlexDevice driver for a device connected to the switcher, we recommend using the FlexDevice driver over the legacy integrated driver. The FlexDevice driver includes the most recent features and bug fixes.
- **Avid Deko** — If you are trying to control the Avid Deko from the switcher over ethernet, please contact Ross Video Technical Support for information on interface issues.
- **Gallery Sienna Looping Clips** — Looping of a clip from the switcher is not supported at this time.
- **Gallery Sienna Clip Control** — Selecting and cueing a clip from the switcher is not supported at this time. Only basic transport commands such as play, pause, stop, rewind, and fast forward are supported.
- **Execute Macro Custom Control Command Length** — The command field for the execute macro custom controls only allows you to enter 62 characters, and not the 64 that are indicated on the menu.
- **Execute Macro Custom Control Commands** — When you create a custom control with multiple Execute Macro commands in it, you must insert a 10-15 frame pause between all the Execute Macro commands.
- **Miranda HMP-1801 Clip Names** — The cumulative size of all clip names on the HMP-1801 must be less than 100 characters for the switcher to properly interface with it.
- **Miranda HMP-1801 Recorded Clip Names** — When you record a clip on the HMP-1801 from the switcher, the clip is named the same as the last clip you recorded on the HMP-1801. You must rename the clip after it has been captured.
- **GPI Outputs on Reboot** — The GPI outputs may trigger, or come up in an unknown state, when the switcher is restarted or rebooted.
- **Canon Camera Manual Control** — The Canon Cameras do not report their current state to the switcher. Under manual control, this means that

the expected value that the switcher has, and the actual value on the camera, may not be the same. This can result in a small adjustment to a value from the switcher causing a dramatic change on the camera as the switcher and camera synchronize values.

- **Canon Camera Iris Control** — In Manual mode, the iris control from the switcher controls the iris function of the camera. In Auto mode, the iris control from the switcher controls the AE level of the camera.

Operational Notes

The following issues have been identified when working with the switcher:

- **Custom Control Sources** — Custom Controls created in version 10.0d, or higher, now record specific Bus Map Sources. This allows a custom control created with one Bus Map to be run with a different Bus Map, as long as the same Bus Map Source exists in the different Bus Map. Custom Controls created prior to version 10.0d only record the source button that was pressed, not the Bus Map Source that the button was mapped to in the Bus Map. All custom controls created in version 10.0c, or lower, should be edited so that source button selections are replaced with the new Bus Map sources.
- **Relative Custom Control (MultiPanel)** — You cannot run the same relative custom control on different control panels at the same time.
- **Stopping Custom Controls (MultiPanel)** — Only the control panel that starts a custom control can stop that custom control.
- **External Power Supplies** — When connecting power to a switcher component that uses an external power supply (such as the Touchscreen), always connect the power supply to the switcher component before connecting it to the AC mains power. Connecting the power supply to the AC mains power before connecting to the switcher component could damage the switcher component.
- **MLE-Store Animation Playback** — If you change any values in the Installation Menu while an MLE-Store animation is playing, the animation will re-start when you confirm the Installation Menu changes. Global-Store animations are unaffected.
- **QMD/X Power Supplies** — The 500 Watt (4800AR-014) and 700 Watt (4800AR-024) Power Supplies cannot be used in the same frame at the same time; doing so may damage the Power Supply, the Frame, or both. Completely power off the QMD or QMD-X frame before replacing all the 500 Watt Power Supplies with the 700 Watt Power Supplies.
- **Unsupported Video Formats** — The video format 1080p 24 is not supported at this time.
- **Select Custom Control Bank** — The Select Custom Control Bank custom control command is not available at this time.

- **Key 4 Mode Configuration (Vision QMD/X Only)** — There are a number of changes to the normal operation of the switcher, depending on how the Key 4 Mode is set.
 1. If the Key 4 Mode is set to an Internal Mode from the Installation Menu, an All+All reset does not select Black for Key 4.
 2. If the Key 4 Mode is set to Internal Mode 2, the Clean Feeds for that MLE show Key 4 Video and Alpha.
 3. If the Key 4 Mode is set to Internal Mode 3, and you assign a Color Corrector to an Aux Bus, selecting a different Key 4 Mode locks the Aux Bus to Black. You must remove the color correction from the Aux Bus before changing the Key 4 Mode.
 4. If the Key 4 Mode is set to External Mode, Utility Mask and Utility Wash show Key 4 Video and Alpha.
- **Border/Trails Video Delay** — Turning Borders or Trails on for a key will cause a one (1) frame delay in the video on the keyer.
- **Squeeze & Tease Video Delay** — Squeeze & Tease wipe transitions cause a one (1) frame delay in the video.
- **Switching Between Borders and Trails** — If you switch between a Trails mode to a Border mode and back again, the key may flash when a Trails mode is selected the second time.
- **Key Trails on a Flying Key** — If you apply a Key Trail or Key Smear Trail to a Shaped Flying Key, a visible black line may be displayed next to the key.
- **Bus Maps Assigned to New MLEs** — When you add an MLE to the switcher, the default settings are applied to it, including Bus Maps.
- **Using the Keypad to Select a Pattern** — You cannot select a pattern from the Global Memory Module for a Preset Pattern wipe, or Pattern Mask.
- **Serial Tally for MultiDSK Keys 5 and 6** — The Serial Tally protocol does not support more than 4 keyers. You cannot use the serial tally protocol to tally MultiDSK keyers 5 and 6.
- **Preview Output on Vision 1 Preview Module** — The **MLE PV** and **MLE PGM** buttons select the main Program (PGM) and Preview (PV) assigned to the control panel, and not the selected MLE.
- **Satellite Control Panels and NTP Servers** — If the switcher is connected to a Network Time Protocol (NTP) server, the satellite panels only receive date and time information when they first connect to the frame.
- **Video Input Board with Reference in QMD** — Do not install a Video Input Board with Reference into Slot E of the QMD frame. Doing so may cause the frame to not lock to reference.

- **Still Approximate Size** — The approximate size of stills reported on the Still-Store Cache Menu is the uncompressed size in RAM of the original image, before the image is converted to the video format the switcher is operating in. The actual size of the image in cache can be different than the size of the uncompressed image in RAM, depending on the format that the original image was captured in.
- **Applying Warp Effect to Chroma Key** — If you apply a Page Roll or Magnify Squeeze & Tease Warp effect to a chroma key, some distortion may be visible around the edges of the key when the key is flown towards the screen, or zoomed in.
- **MultiViewer Overlay Cropping** — The overlay borders on the MultiViewer output cover a portion of the active video. This is equal to 24 lines per frame on the large boxes, and 48 lines per frame on the smaller boxes. This only effects the MultiViewer output.
- **Pre-MultiViewer Switcher Setups** — If you are upgrading to a MultiViewer configuration, your existing switcher setups containing the Installation register should be re-saved with the MultiViewer active.
- **MultiViewer Hardware Support** — The MultiViewer requires the Video Processor Board (4800AR-041), and is not supported by the Video Processor Board (4800AR-040).
- **MultiViewer Source Names** — If you change your switcher installation, or source names, the names shown on the MultiViewer output may be incorrect. Enter the MultiViewer Layout Editor Menu and re-assign the sources to the MultiViewer Layout to update the source names on the MultiViewer output.
- **Recall Installation May Reboot Boards** — If you recall an Installation Register that requires a hardware reconfiguration, the required boards will reboot when the recall is confirmed.
- **Key 4 Configuration** — MLEs that are not present in the switcher may be listed on the **Key 4 Configuration Menu** if the Video Processor supporting those MLEs is configured as a MultiViewer.
- **MultiViewer Upgrades** — If you are upgrading to a MultiViewer setup, each MultiViewer option must be purchased in order. When the MultiViewer is installed, the MLE, and any Squeeze & Tease resources that were supporting that MLE, become unavailable as long as the MultiViewer is active.
- **All-All Reset in Custom Controls** — If you include an ALL+ALL reset of the control panel in a custom control, it must be the last or only event in the custom control.
- **Simple Pattern Generators** — The 4 simple pattern generators per MLE have been removed.
- **Windows® 7 WebDAV Connection** — If you create a connection from a Windows 7 computer to transfer stills to the switcher. The computer

may not be able to connect to the switcher after the computer has been rebooted. You must re-create the WebDAV connection to re-establish connection.

- **OverDrive Assigned Channel Names** — OverDrive can assign names to channels, and channels to faders on the Audio Control module. These settings persist even after the Editor has been disabled. You must perform an All+All reset to return the names and fader assignments to the switcher default assignments.
- **Global-Store Capture Won't Complete** — If you perform a Global-Store capture and the capture complete message does not appear (the **Capture** button remains gray), you must restart your switcher to regain the capture functionality.

Software Upgrade

Software upgrades are performed from the web interface to the switcher frame. You must download the upgrade files and have then on a computer connected to the switcher over Ethernet to perform the upgrade.

Depending on the version of software you are upgrading from, your menus may be arranged or appear differently. Refer to the switcher documentation that came with your current version of software for more information on your menus.

Important: *Version 14.1b requires Vision OS v33, or higher. To confirm the current OS version, press **Home > More > Setup > Installed Options > Panel Boards**. If the Vision OS is not v33, or higher, please contact Ross Video Technical Support for information on upgrading your Vision OS.*

Upgrade Compatibility

Before upgrading your switcher, review the following version compatibility information.

Table 1: Upgrade Compatibility

Product	Compatibility
OverDrive® Production Control System	This version of software has been tested with OverDrive.
Synergy MD/X	The Synergy control panel is not supported by this version of software.
Synergy to Vision	To upgrade to the new Vision control panel, you must first upgrade to version 6.0 or 6.1. Once you have upgraded to version 6.0 or 6.1, you must upgrade to version 7.1b, or higher, to support your Vision control panel. Contact Ross Video Technical Support for assistance before starting the upgrade.
Vision 7.0 or higher	<ul style="list-style-type: none">Pre-MultiViewer Switcher Setups — If you are upgrading to a MultiViewer configuration, your existing switcher setups containing the Installation register should be re-saved with the MultiViewer active, instead of the MLE.Ancillary Data Passed — If the Ancillary Data is set to Strip (default) before the upgrade, it will be set to Pass after the upgrade. If custom settings have been applied to the Ancillary Data handling, these settings are preserved.
Vision 11.0a or higher	You must set the GlobStorChan4 option, on the Personality Menu, to Pvw Overlay before performing the upgrade. If Global-Store channel 4 (Still-Store) is active during the upgrade to v14.1b, you must factory default the switcher after the upgrade to regain the preview overlay.
Vision 11.0a or lower	Program MLE settings of Automatic will be replaced with MLE 8 when you restore your settings, even if MLE 8 is not installed. After you restore your settings, you must manually set the Program MLE for each panel. Ross Video also recommends that the Program MLE be set to MLE 1 for Satellite Panels that are not installed.

Product	Compatibility
Vision 6.1 or lower	<ul style="list-style-type: none"> SmartConversion™ settings may need to be reconfigured after upgrading. Please note your SmartConversion settings before upgrading so that you may restore them once the upgrade is complete. Refer to the Vision Engineering Manual for detailed instructions on configuring SmartConversion. AuxKeys™ (Aux Mix/Keyers and Aux Mixers) will need to be reconfigured after upgrading. Please note your AuxKeys (Aux Mix/Keyers and Aux Mixers) settings before upgrading that you may restore them once the upgrade is complete. Refer to the Vision Engineering Manual for instructions on AuxKeys.

Downgrade Compatibility

For information on downgrading to a previous version, contact Ross Video Technical Support.

Note: *If your switcher was shipped with the new Frame CPU Board (4800AR-002) with the Frame CPU Processor Card (4800AR-003), you cannot downgrade past v14.0a.*

- Corrupt Custom Controls** — A custom control created in v15.0, or higher, cannot be used with a previous version of software.

Hardware Compatibility

Before upgrading or downgrading your switcher, review the following hardware compatibility information.

Table 2: Hardware Compatibility

Version	Hardware
14.0a or higher	<ul style="list-style-type: none"> 4800AR-002 — Frame CPU Board 4800AR-003 — Frame CPU Processor Card
11.0a or higher	<ul style="list-style-type: none"> 4800AR-066 — Video Output Board
10.1i or higher	<ul style="list-style-type: none"> 4800AR-041-02 — Video Processor Board
10.1g or higher	<ul style="list-style-type: none"> 4800AR-019 — QMD-X Midplane
10.1c or higher	<ul style="list-style-type: none"> 4400AR-061 — Video Input Board with crosspoint and reference (16 Input) 4800AR-047A — Squeeze & Tease Carrier Board
10.0b or higher	<ul style="list-style-type: none"> 4800AR-061A — Video Input Board with reference (16 Input) 4800AR-061B — Video Input Board without reference (16 Input) 4800AR-061C — Video Input Board without reference (10 Input)

Backup Switcher Registers

Because the software upgrade process automatically returns the switcher to default values, it is important that you back up all switcher registers to the hard drive.

To Back up Switcher Registers

1. Press **HOME > Disk**.
2. Press **Dest/Source**.
3. Use the **Disk Type** knob to select **Hard Drive**.
4. Use the **Set Names** knob to select the Setup you want to store the registers to.
5. Press **Store**.
6. Press **All** to store all categories of registers to the selected Setup.

Prepare the Switcher Before an Upgrade

Recalling the factory default settings for the switcher before the upgrade ensures that all the boards, cards, and modules on the switcher are in a known state, and are ready to accept an upgrade. The switcher must then be set back to the proper reference format before the upgrade.

To Perform a Factory Default

1. Press **HOME > More > Setup > Installation > More > More > Recall Factory** .
2. Press **Personality > Yes** to recall the factory default setting for the personality registers.
3. Press **Memories > Yes** to recall the factory default setting for the memory registers.
4. Press **Switcher > Yes** to recall the factory default setting for the switcher registers.
5. Press **Installation > Yes** to recall the factory default setting for the installation registers.
6. Press **Custom Controls > Yes** to recall the factory default setting for the custom control registers.
7. Press **Default VTR Clips > Yes** to recall the factory default setting for the clip registers.
8. Press **Default NV-RAM > Yes** to recall the factory default setting for the NV-RAM.

9. Press **Default S&T > Yes** to recall the factory default setting for the Squeeze & Tease registers.
10. Press **Default Bus Maps > Yes** to recall the factory default Bus Maps.
11. Press **Default Shot Box Pages > Yes** to recall the factory default Shot Box Pages.
12. Press **Camera File > Yes** to recall the factory default Camera Files.
13. Press **CC/Macro Attachments > Yes** to remove custom control attachments.
14. Press **Default MultiViewer > Yes** to recall the factory default MultiViewer settings.
15. Press **Default CC Variables > Yes** to recall the factory default custom control variables settings.
16. Press **HOME > Confirm** .

Power Down all Satellite Panels

To ensure that all control panels upgrade properly, you should power down any satellite panels before performing the upgrade. After the upgrade has been completed, you can power on each of your satellite panels and upgrade them.

To Set Video Reference

The factory default procedure resets the reference format. You must set the reference back to the input reference that is connected to the switcher before starting the upgrade.

1. Press **HOME > More > Setup > Installation > More > Reference** .
2. Use the **Input Board** knob to select the Video Input Board that reference is connected to.
3. Use the **Ref Format** knob to select the reference format of the input reference.
4. Use the **Video Format** knob to select the video format that is connected to the switcher.
5. Press **HOME > Confirm** .

Performing the Upgrade

Depending on the number of boards, cards and modules in the switcher, and the current version of software on them, it will take between 15 and 40 minutes to complete the upgrade.

Note: After the Factory Default is performed, the Bus Maps and Output BNC settings have been changed to the default settings. Ensure that you can find a source button that is assigned to a valid input, and that you have a monitor connected to a default Aux Bus output of your switcher. You will need to verify that the switcher is passing video properly after the upgrade.

To Upgrade the Switcher Software

1. On your computer, open your Web Browser and, in the address bar, enter the IP address of your frame and press **Enter**. The QMD/X Web Interface Splash Screen is displayed.
2. Enter your username and password as follows when the Login Dialog Box appears. The default Name is `user` and Password is `password`.
3. Click **Upgrade**. The **Upgrade Page** lists all the previous upgrade packages that were stored on the hard drive of the frame.

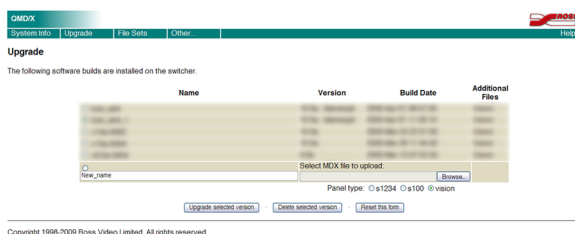


Figure 3: Upgrade Page

4. Enter a name for the upgrade package in the **New_Name** field. This must be unique and descriptive enough to allow you to easily identify it at a later point. Upgrade package names can only include numbers, letters, periods, and underscores or dashes. Spaces and other symbols are not allowed.
5. Click **Browse**.
6. Locate the upgrade package file you want to upload to the switcher on your computer. The file is named `mdx-<version><build>.tgz`.
7. Click **Open/Choose** to select the file. The file path and name appears in the **Select File to Upload** field.
8. Select **Vision** as the panel type.
9. Click **Upgrade Selected Version**.

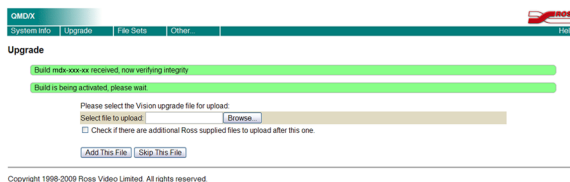


Figure 4: Upgrade Page

Important: Do not reload/refresh the web page while the upgrade file is being downloaded and activated. It can take several minutes for the file to be uploaded to the switcher, depending on network congestion.

10. Click **Browse**.
11. Locate the Vision upgrade package file you want to upload to the switcher on your computer. The file is named `vision-<version>-<build>.tgz`.
12. Click **Open/Choose** to select the file. The file path and name appear in the **Select File to Upload** field. If the switcher is unable to verify that the file is an upgrade package, an error message is displayed.
13. Click **Add This File** to add the selected file to the software upgrade package.
14. Wait while the switcher installs the software version. This may take a few minutes. When the software version has been installed, the **Additional Files** page is displayed.

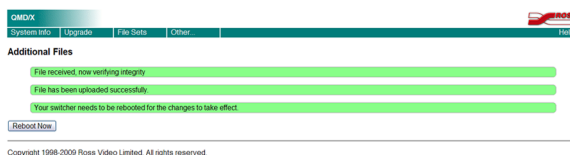


Figure 5: Additional Files Page

Note: If you receive a warning that the upgrade has failed because the flash is full (*Rsync failed, is flash full?*), check the remaining Application Flash in the Storage Capacity section of the **System Info** page. If the remaining capacity is less than 2M, you must delete a number of FlexDevice drivers to free up space for the upgrade. You can re-install the FlexDevice drivers after the upgrade. Once you have freed up the required space, try the upgrade again.

15. Click **Reboot Now** to restart the switcher.

This cycles the logs on the switcher and propagates the upgrade to all the boards, cards and modules on the switcher.

Note: If a message asking you to Reboot the control panel appears on the menus of the Touchscreen display, click **Cancel**. You will be rebooting the entire switcher in a later step.

16. Allow the switcher to propagate the upgrade to all the boards and cards by waiting at least 20 mins before proceeding to the next step.
17. Wait for the **System Information** page to be displayed and the upgrade to complete.
 - Periodically reload/refresh the **System Information** page until all the items listed have Done as their Status.
 - Verify that the switcher is passing video properly by selecting different crosspoints. This ensures that the upgrade has completed. If the switcher is not passing video properly, check the **System Information** page again to ensure all items are done.

Upgrade Errors

Table 3: Error Messages and Resolutions

Error Message	Resolution
If the message The software versions of the panel and frame do not match is shown, you need to upgrade your panel.	Press HOME > More > System Shutdown > Upgrade Panel .
If the message PMCs need to be upgraded; please go to Panel Modules menu is shown, you need to upgrade your PMCs.	Press HOME > More > Setup > More > Panel Modules > Upgrade PMCs .

Restoring the Switcher After the Upgrade

Rebooting the switcher after the upgrade ensures that all the boards, cards, and modules on the switcher are properly upgraded and initialized. If a board, card or module was not properly upgraded, the switcher attempts to upgrade and initialize it again with the reboot. Once the upgrade is complete, you can restore your switcher registers.

To Reboot the Switcher

1. Press **HOME > More > System Shutdown > Shut Down** .
2. Toggle the power switches in the QMD/X frame and Vision control panel to Off.
3. Wait at least 6 seconds for the **System Status Indicators** on the frame to go out.
4. Toggle the power switches in the Vision control panel and the QMD/X frame, to On.

5. Toggle the power switch on the Vision control panel CPU Module to On.

Upgrading Satellite Panels

With the upgrade complete, you can power on each of the Satellite Panels, connect them to the frame, and upgrade them. Power on each Satellite Panel, in order, to upgrade it. Ensure that a Satellite Panel is upgraded properly before powering on the next one.

Refer to the *Vision Engineering Manual*, for information on adding Satellite Panels to the switcher.

Tip: *If the message The software versions of the panel and frame do not match is shown, restart the Satellite Panel to trigger the upgrade.*

To Restore Switcher Registers

1. Press **HOME > Disk**.
2. Press **Dest/Source**.
3. Use the **Disk Type** knob to select **Hard Drive**.
4. Use the **Set Names** knob to select the Setup you want to store the registers to.
5. Press **Recall**.
6. Press **All** to recall all categories of registers from the selected Setup.

Notes:

Contact Us

Contact our friendly and professional support representatives for the following:

- Name and address of your local dealer
- Product information and pricing
- Technical support
- Upcoming trade show information

PHONE	General Business Office and Technical Support	613 • 652 • 4886
	After Hours Emergency	613 • 349 • 0006
	Fax	613 • 652 • 4425
E-MAIL	General Information	solutions@rossvideo.com
	Technical Support	techsupport@rossvideo.com
POSTAL SERVICE	Ross Video Limited	8 John Street, Iroquois, Ontario, Canada K0E 1K0
	Ross Video Incorporated	P.O. Box 880, Ogdensburg, New York, USA 13669-0880

Visit Us

Please visit us at our website for:

- Company information
- Related products and full product lines
- On-line catalog
- News
- Testimonials