



Large Lens Adapter
Large Viewfinder Adapter

Broadcast Products Technical Bulletin 20-2015-015

DATE: January 19, 2015

SUBJECT: REINFORCING CRACKED VF SADDLE BASE

MODEL: ***HDLA1500***
HDLA1500
HDLA1507
HDLA1507

SERIAL NO: ALL

Italicized information in green applies to customers outside the United States.

DESCRIPTION

If excessive loads are applied to the VF saddle base, the mounting section of the VF slide base may crack.

The crack can be reinforced by adding a VF saddle support to the VF slide base without having to replace the VF saddle base assembly. (See Figure 1.)

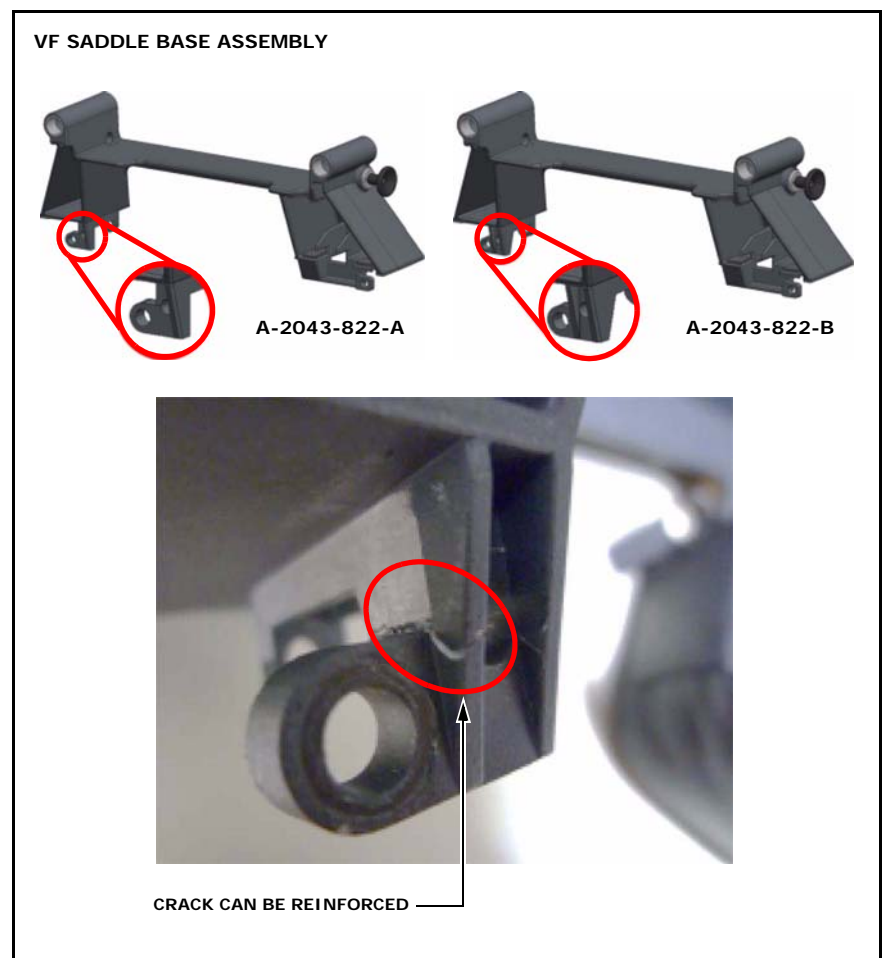


Figure 1

NOTE: If the mounting section is completely severed, the VF slide base cannot be reinforced and the VF saddle base assembly must be replaced with a new assembly; adding the VF saddle support will not be sufficient. (See Figure 2.)

HDCM14-078

VF SADDLE BASE ASSEMBLY

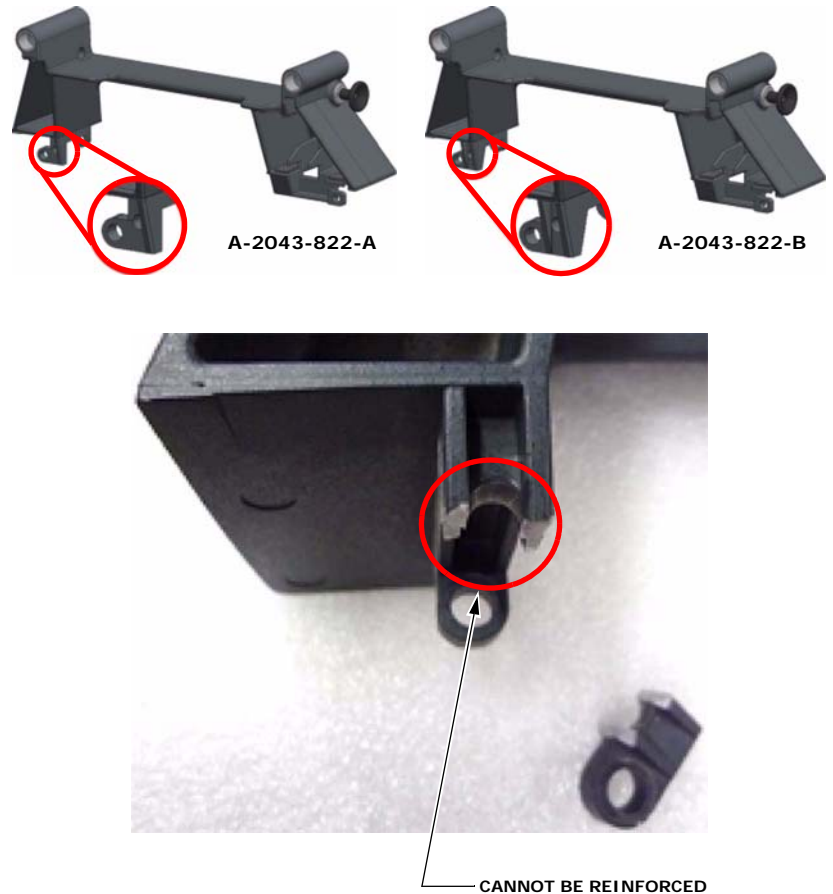


Figure 2

PARTS REQUIRED

Part No.	Description	Qty.
4-544-929-01	VF Saddle Support	1
4-545-866-01	VF Saddle Support Nut	1
7-683-410-04	Bolt, Hexagon Socket 3×20	1

ORDERING INFORMATION

To order parts online, go to: www.sony.com/servicesplus. For service or parts ordering assistance, refer to the following document, which lists all contact telephone numbers:

Technical Bulletin 00-1999-000

MODIFICATION PROCEDURE

1. Open the rear chassis.
2. Install the VF saddle support as follows and as shown in Figure 3.
 - a. Insert the VF saddle support between the VF slide base and the rear chassis, noting the correct orientation of the VF saddle support nut.
 - b. Secure the support with the 3×20 bolt.

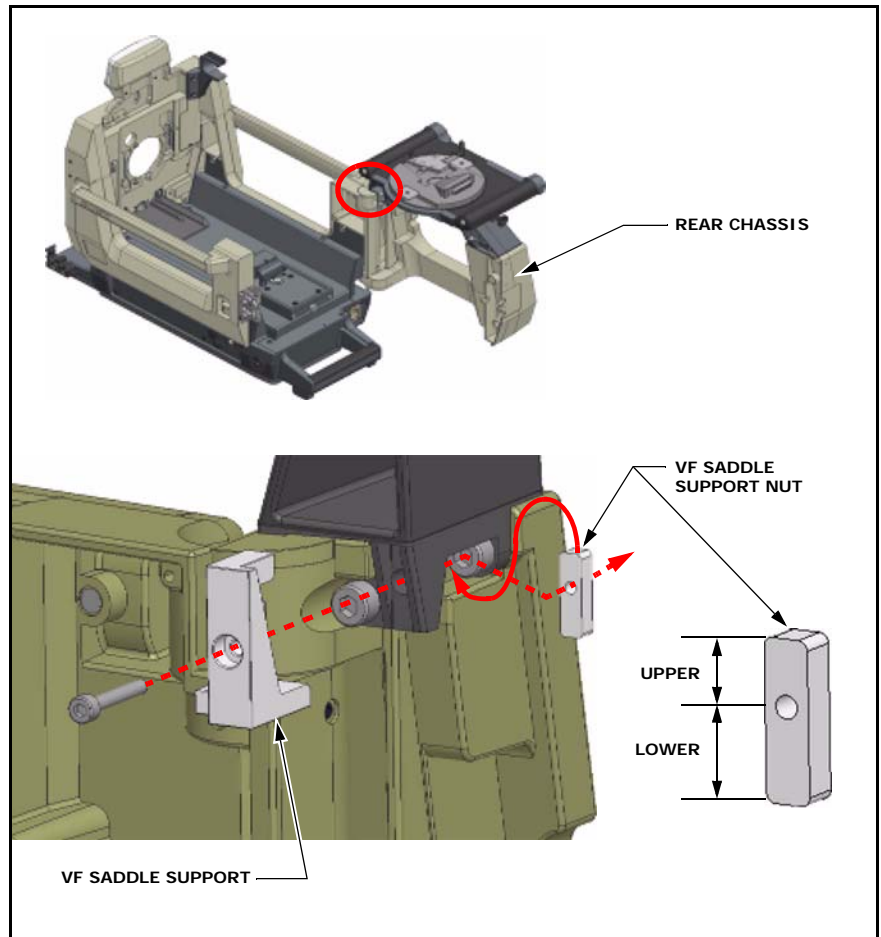


Figure 3

When installed, the VF saddle support appears as shown in Figure 4.

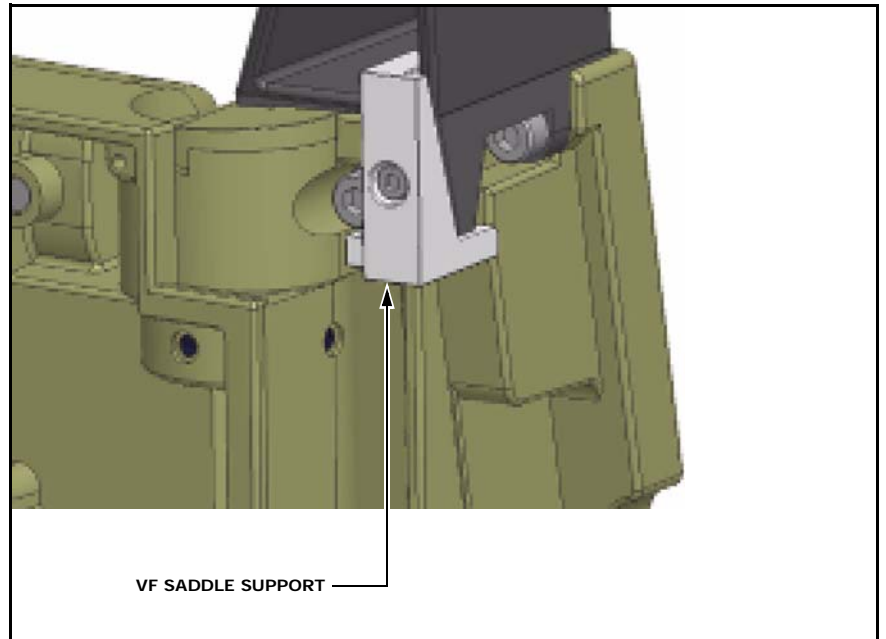


Figure 4

CONFIRMATION AND ADJUSTMENT

Confirm that the VF saddle support is attached securely and that there is no gap. (See Figure 5.)

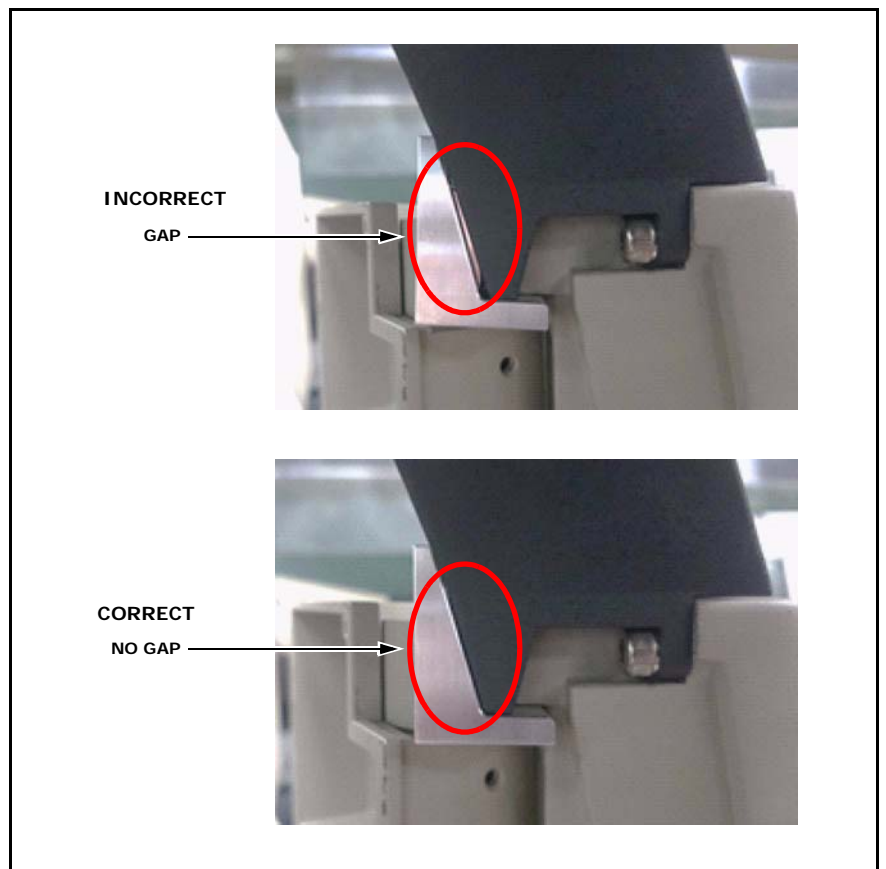


Figure 5

If the VF saddle support has a gap, reattach the VF saddle support as follows:

1. Loosen the three 5×12 bolts. (See Figure 6.)
2. Lightly press down on the top of the VF saddle, and if the VF saddle support goes all the way in, tighten bolt 1.
3. Secure the VF saddle support, and tighten the remaining bolts 2 and 3.

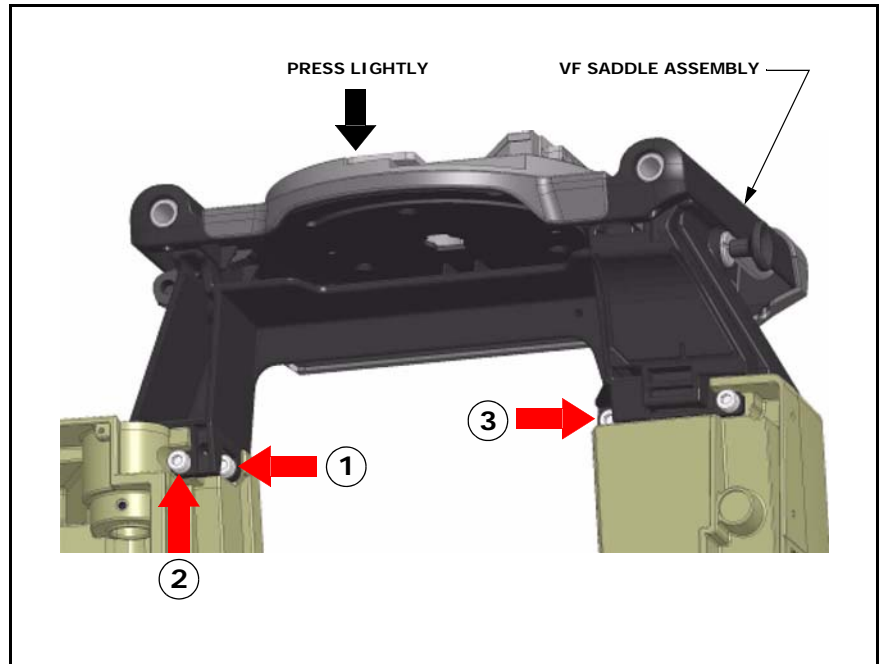


Figure 6