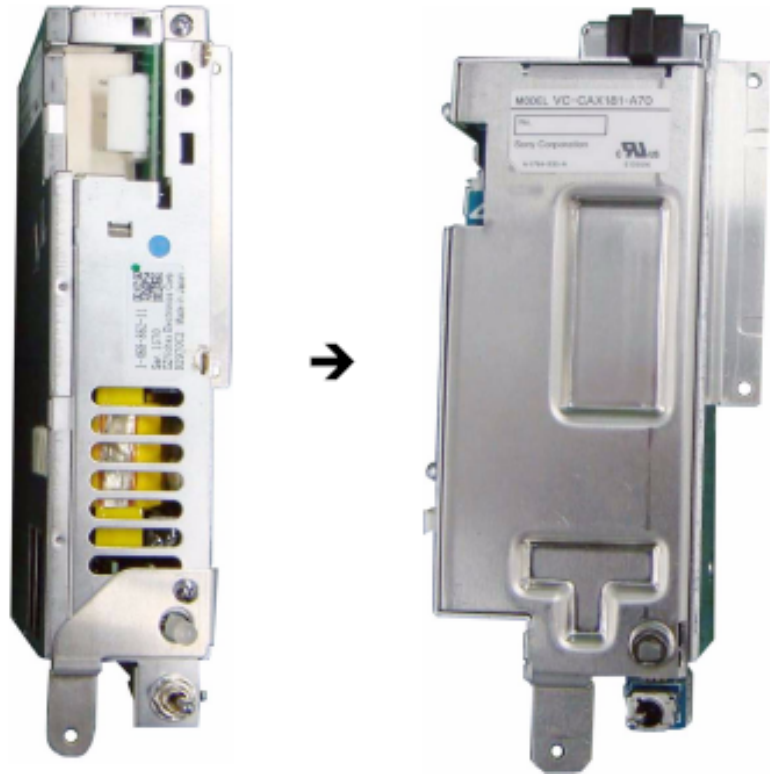


HDC1500R w/ New Power Supply Traix Compatibility Guide

FORMER SWITCHING REGULATOR

NEW POWER BLOCK ASSEMBLY (A70)



New power supply has the equivalent of the FL338 already integrated in the unit. Brand new cameras, HDC1500R & HDC1400R are shipping with these.

When converting a Fiber camera for dual use (interchangeable triax or fiber sides) in a camera that contains a **NEW** power supply the following parts need to be ordered :

1-967-495-11 ; Sub harness (Triaxin A70) ; qty = 1

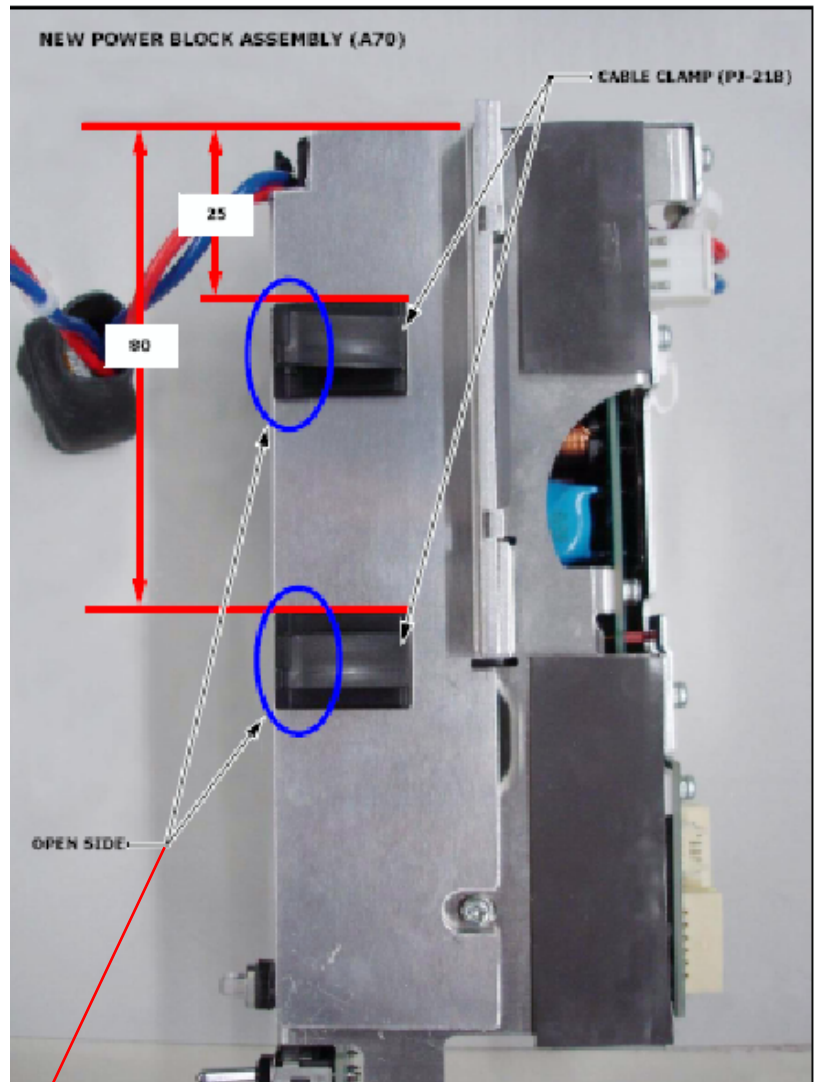
4-209-962-01 ; Cable clamp (PJ-21B) ; qty =2

When converting a Traix camera to Fiber for dual use, simply use appropriate connector when installing sides.

HDC1500R w/ New Power Supply

Traix Compatibility Guide

New Power Supply
installed in fiber
cameras, Traix
compatibility
guide.



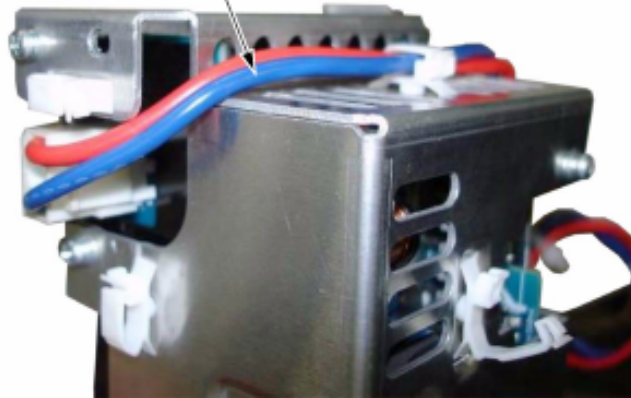
Remove power supply from the unit.
Install two stick-on cable clamps as illustrated.

HDC1500R w/ New Power Supply

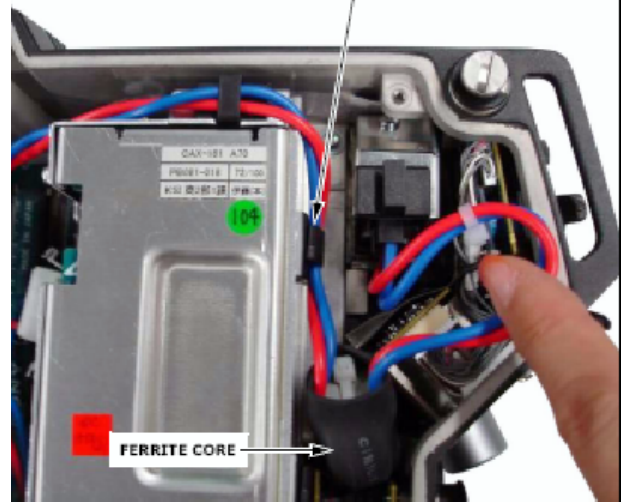
Traix Compatibility Guide

New Power Supply installed in fiber cameras, Traix compatibility guide.

SUB HARNESS (TRIAxin A70)



CABLE CLAMP (PJ-21B)



FERRITE CORE

Install Sub harness (Triaxin A70) as above. Bring the white connector around to the power supply as in top illustration, and either connect (using triax side) or leave loose (fiber side). Clamp cable as illustrated on top of the supply and on the side. Fit ferrite core in open space area and connect black connector (triax side) or leave loose (fiber side).

Done.

HDC1500RFADAPT

(all L/R w/ Old or New P Supply)

Parts List

Fiber Adapter

(HDC1550R=>HDC1500R/L)

HDC1500RFADAPT ; OUTSIDE PANEL ASSY (F/L/R) ; Complete
Fiber side panel.

*Note: if matching color side is desired, order =>
A-1128-449-A, new side is slightly darker.

*Note: SDI-84 board in the side panel of HDC1500RFADAPT is a little different from previous model HDC1500FADAPT. The difference between the new one and the previous one is the timing of Link-A and Link-B when using the camera in the 24p-444 or 60p DUAL-LINK (stand alone) condition, but this is a very minor difference and it will not effect the picture quality. So, it is not necessary to replace the SDI board and the HDC1500RADAPT can be used in the HDC1550L camera. If you want to remove this small error, then it will be necessary to replace SDI board to older version (A-1099-252-B).

HDC1500RTADAPT

(all L/R with Old P Supply)

Parts List

Triax Adapter
(HDC1500R=>HDC1550R/L)

HDC1500RTADAPT ; OUTSIDE PANEL ASSY (T/K/R); Complete triax side panel.

*Note: If matching color side is desired order => A-1154-374-A, new side is slightly darker.

HDC1500FL338N ; AC-Filter unit (for older R & all L);
qty = 1

Below parts are included with HDC1500FL338N order...

HOLDER, FL ; (for older R & all L) ; (3-990-333-02)
qty = 1

Clamp, Reuse ; (for older R & all L) ; (3-853-802-01)
qty = 2

Sheet, Protection (for L only) ; (3-990-319-03) ;
qty = 1

Sheet, AD Thermal (for all R & all L) ; (3-992-748-01) ;
qty = 1

Finger, Shield(E-220-00);(for all R & all L);(3-993-540-01)
qty = 2

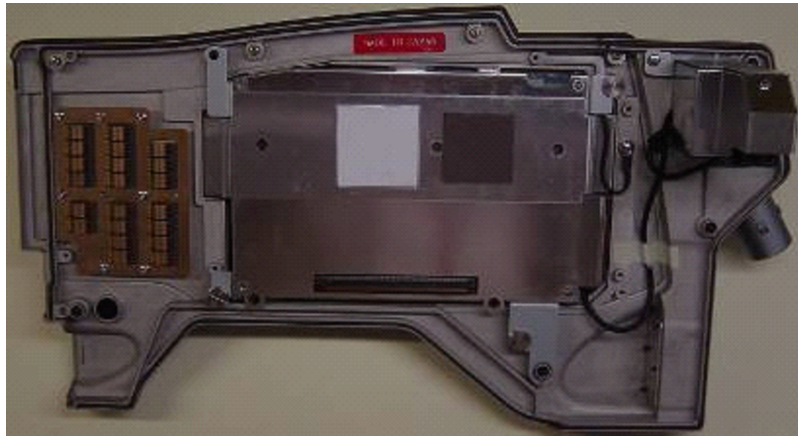
Conductor(TRIAX),DPR ; (for all R & all L);(3-993-741-01)
qty = 1

Screw (+B)(2x4);(for all R & all L) ; (3-729-076-11)
qty = 4

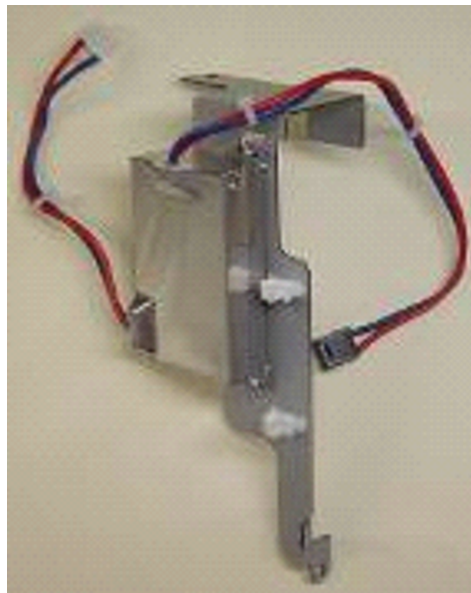
HDC1500RTADAPT

Parts List

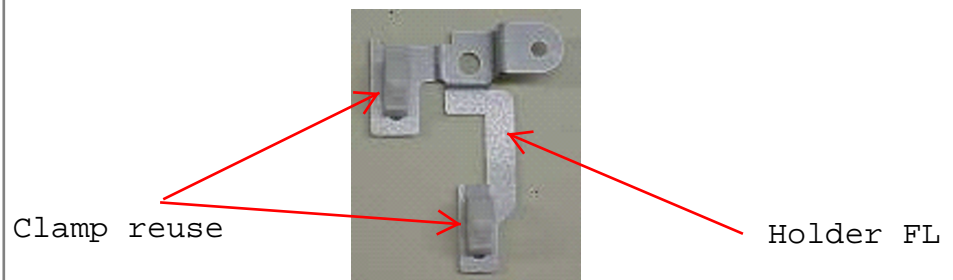
HDC1500RTADAPT
outside panel



FL-338 Assy



Holder FL



HDC1500RTADAPT

Parts List

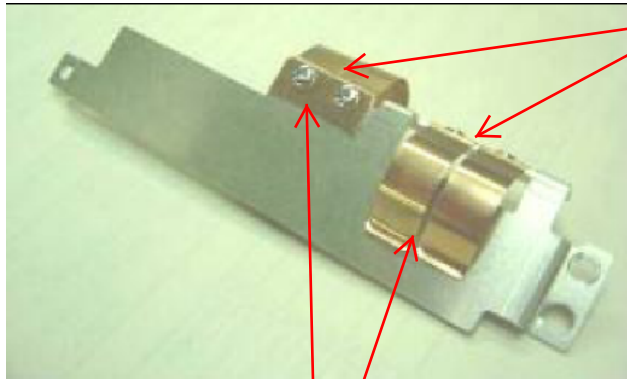


Sheet, Protection



*Note: this item is normally not needed, it is usually already installed between the power supply and upper chassis

Conductor(Triax)
DPR



Screw
(+B)(2x4)

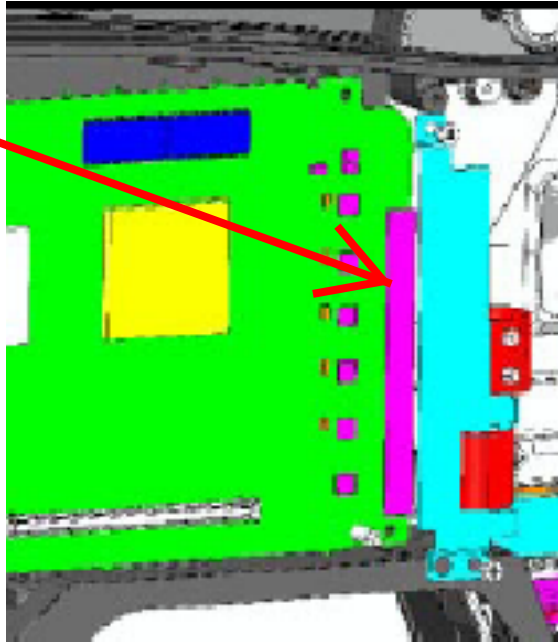
Finger Shield



HDC1500RTADAPT

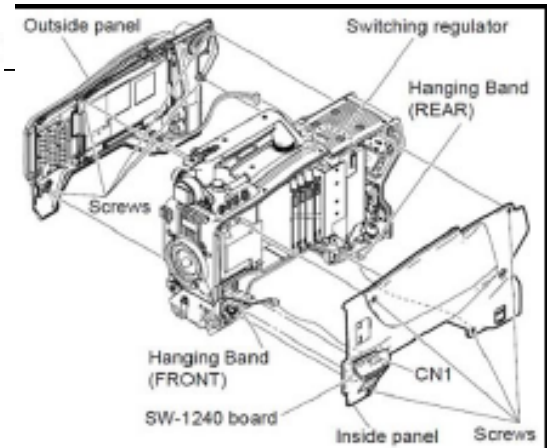
Parts List

Sheet, AD Thermal



HDC1500RTADAPT

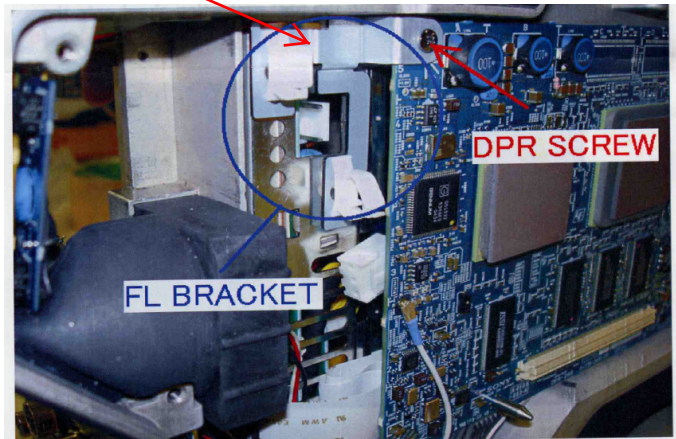
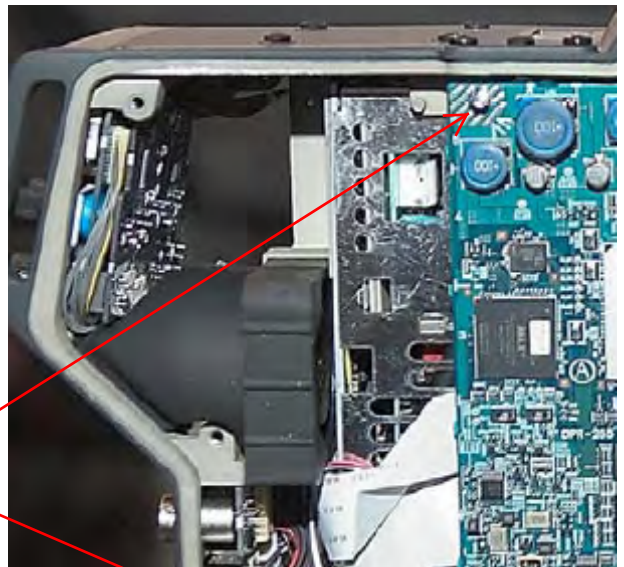
Install procedure



Triax Adapter
installation

- remove right side panel of the camera

- Remove DPR screw & mount FL bracket w/ removed screw.



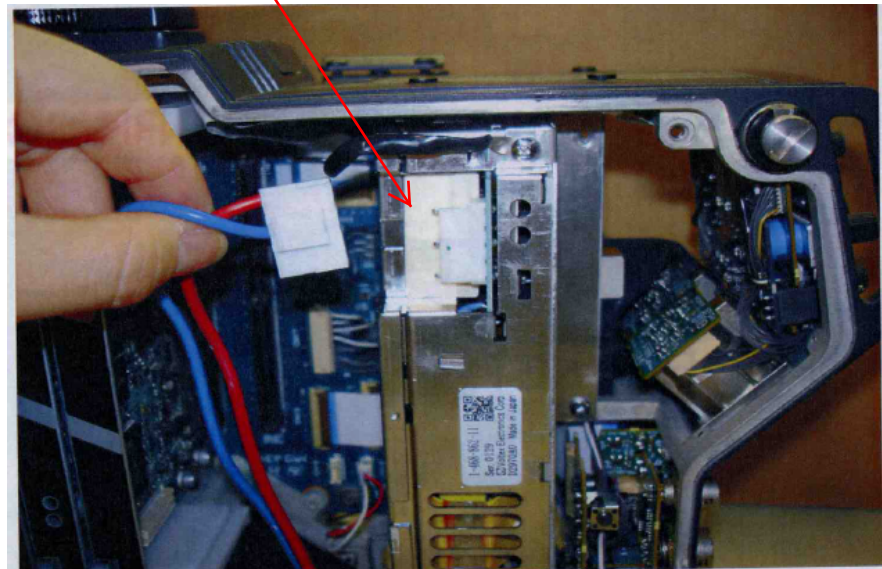
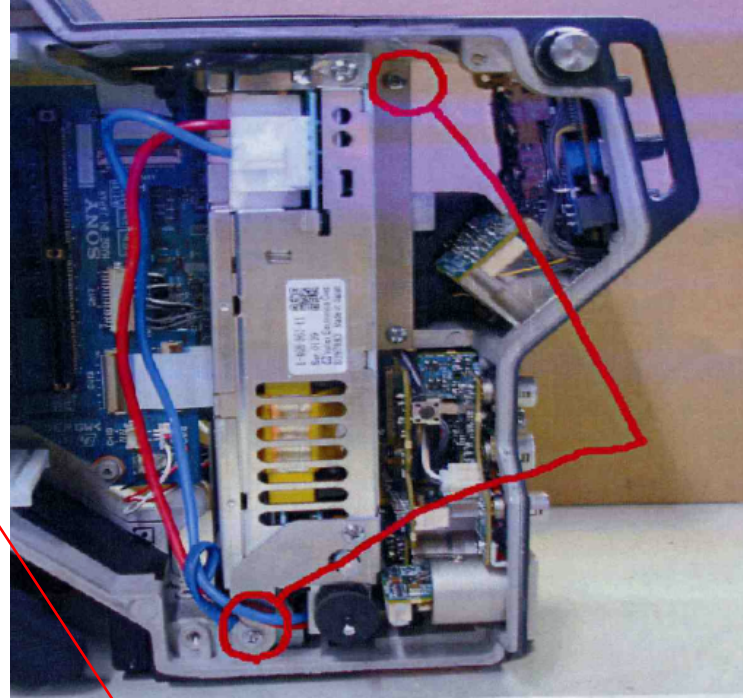
HDC1500RTADAPT

Install procedure

Triax Adapter
installation
cont...

- open left side of the camera.

- Remove power
supply screws and
power connector

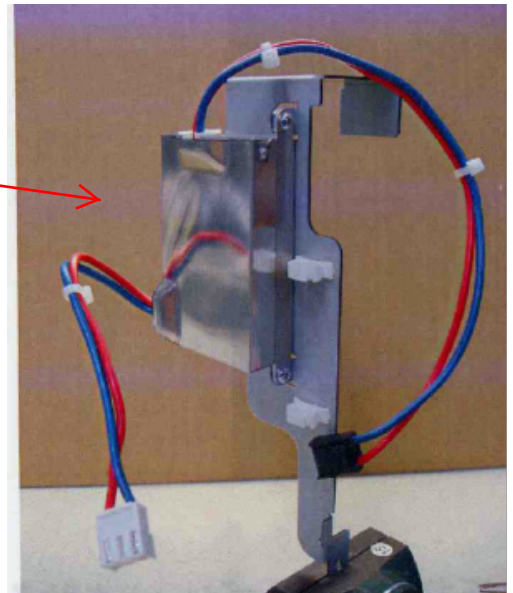


HDC1500RTADAPT

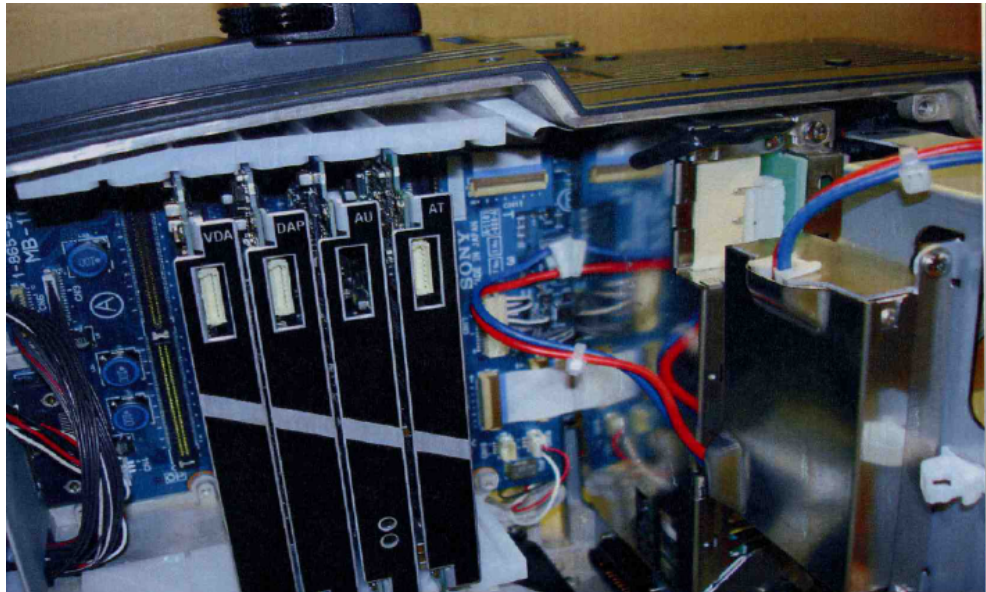
Install procedure

Triax Adapter
installation
cont...

- Locate FL338 assembly
(do not take apart)



- pull out the power supply about half way and position FL338 on the left side, in the orientation shown on the above picture. Take the white connector of the FL338 and position it to the back of the FL338 / power supply and route through the space between these two and the mother board. (see next photo)

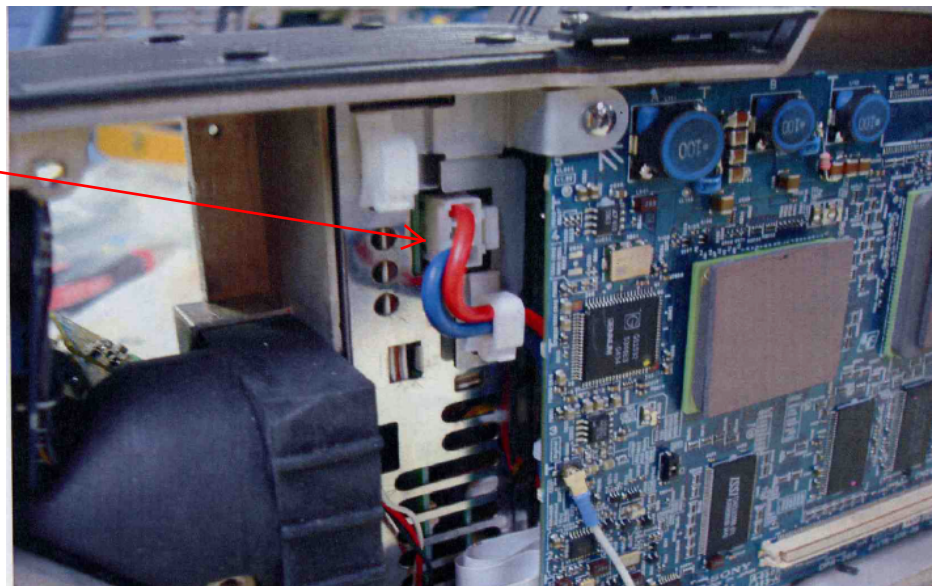
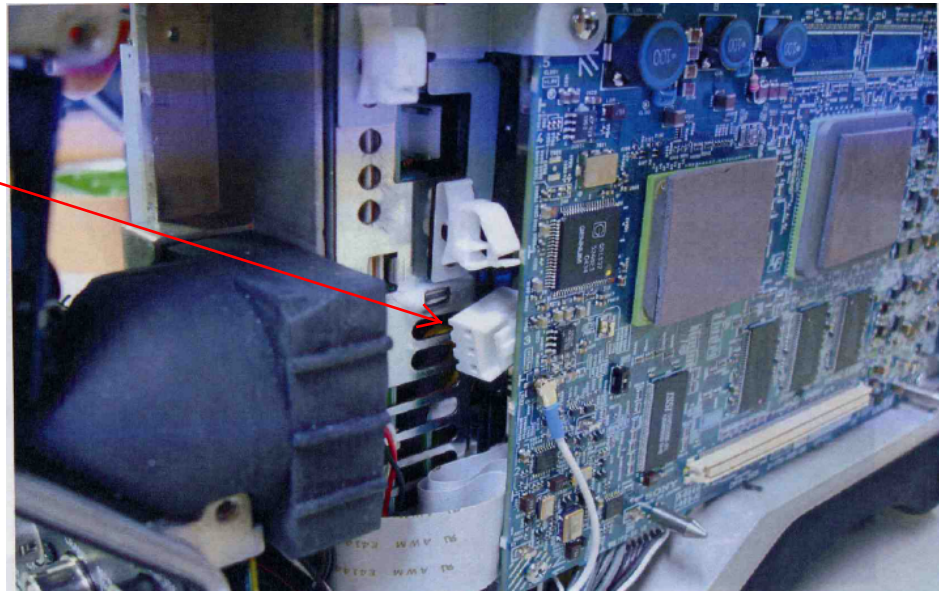


HDC1500RTADAPT

Install procedure

Triax Adapter
installation
cont...

- white FL338 cable routed through space between mother board and power supply. Then connect to connector on rear of the power supply.

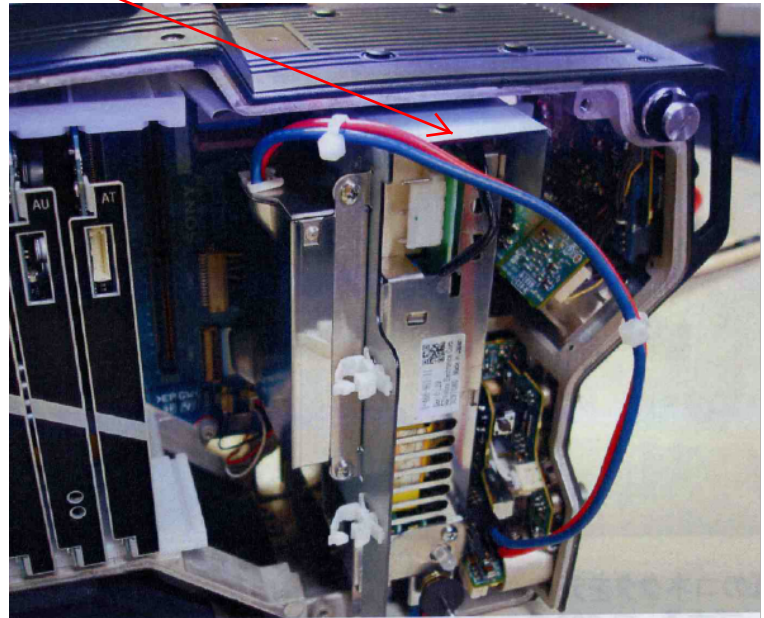


HDC1500RTADAPT

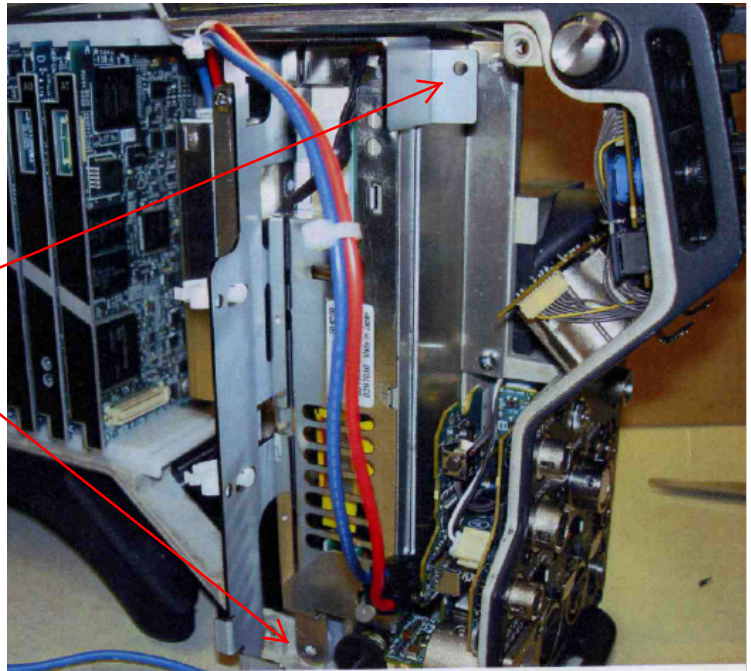
Install procedure

Triax Adapter
installation
cont...

- position the FL338 assembly so that it overlays the power supply and push back both so that they are fully recessed.



Locate removed
power supply
screws and re-
install, mounting
FL338 assembly.

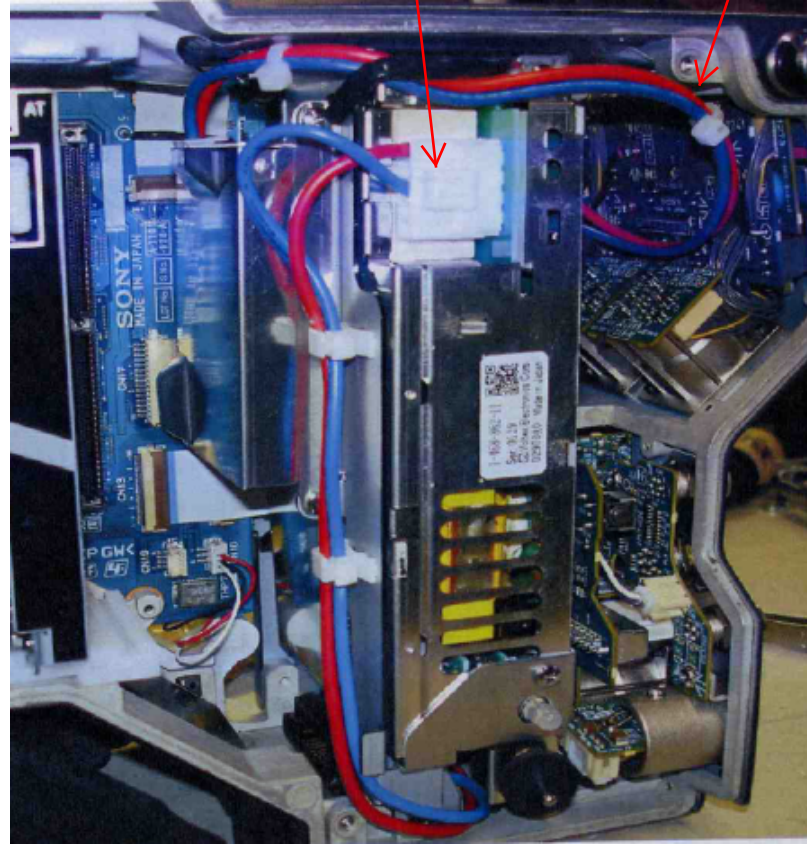


HDC1500RTADAPT

Install procedure

Triax Adapter
installation
cont...

- route the FL338 wire with the black connector along the top of the power supply and out to the right side of the camera through the space between the fan and intercom board
- reconnect power supply connector and dress wire using installed holders on the FL338 assembly



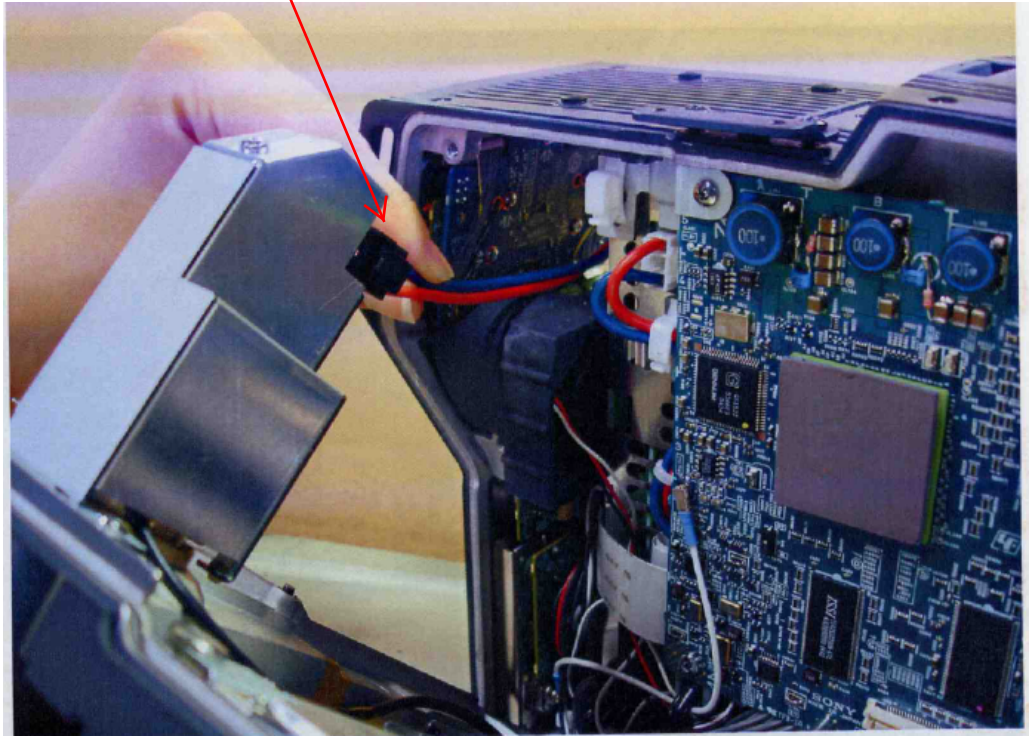
- NOTE !!! power wires should be dressed in such a way as to avoid contact with side cover screw !!!

HDC1500RTADAPT

Install procedure

Triax Adapter
installation
cont...

- installation of the filter kit is now complete and ready for HDC1500TADAPT side cover installation.
- Use black connector to connect to the TRIAX side cover as shown.....



- when utilizing the FIBER side, remove TRIAX side, remove black connector from the TRIAX side and remove FL338 white connector from the rear of the power supply. and secure to installed holder.
- Install white power connector on the FIBER side to the rear power supply connector and then install FIBER side.

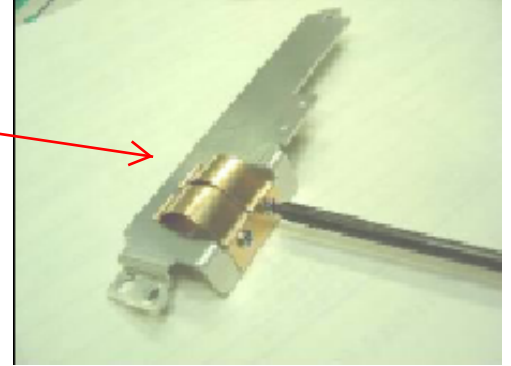
HDC1500RTADAPT

Install procedure

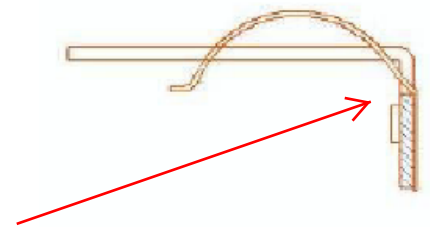
Triax Adapter
installation cont...



Install shield fingers



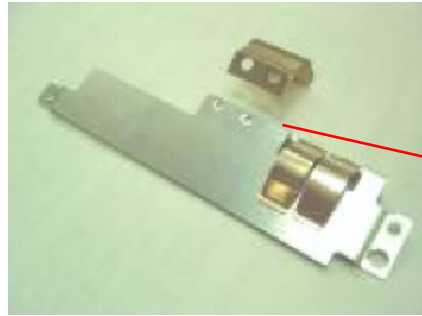
Conductor Edge should be
aligned to the corner of the
finger



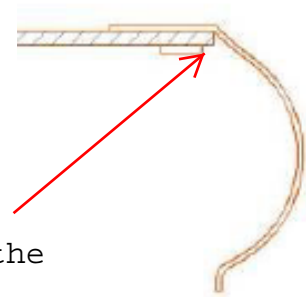
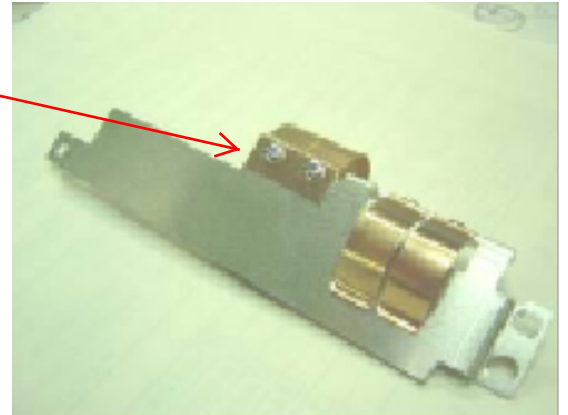
HDC1500RTADAPT

Install procedure

Triax Adapter
installation cont...



Install shield fingers

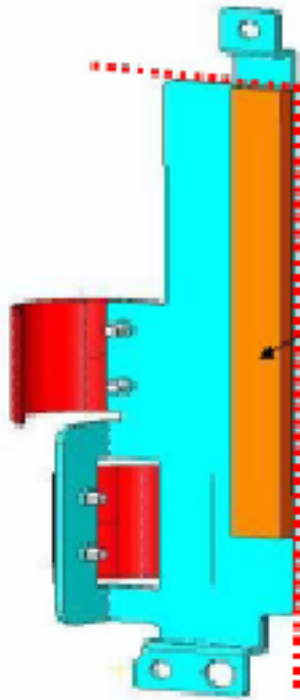


Conductor Edge should be
aligned to the corner of the
finger

HDC1500RTADAPT

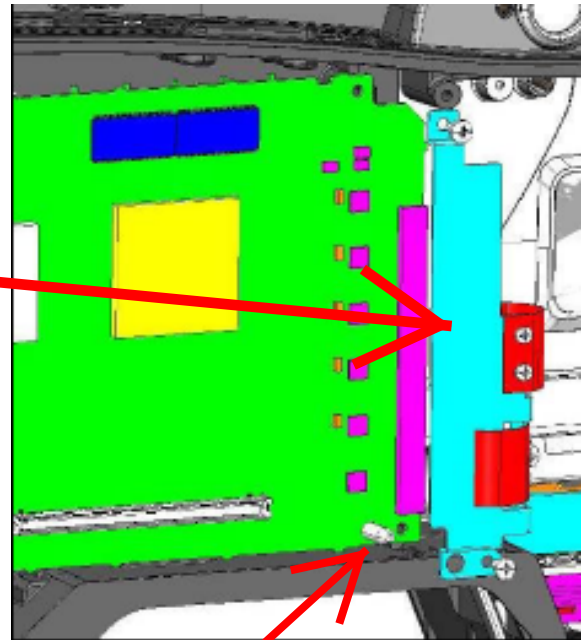
Install procedure

Triax Adapter
installation cont...



Install Sheet, AD Thermal
make sure top edge and side
edges align to each other

Install shield, remove
screws from DPR board
and reuse to install



Guide Pin