



## Video Products Technical Bulletin 30-2009-163

DATE: **September 21, 2009**SUBJECT: **SCREEN APPEARS WIDE (16:9) WHEN  
CONNECTED TO NTSC CAMERA WITH 8-PIN  
CABLE**MODEL: **DXF-51//K2  
DXF-51//K3  
DXF-51//K4****DESCRIPTION**

When DXF-51 is connected to an NTSC camera with an 8-pin cable, the screen appears WIDE, as if aspect ratio is 16:9.

## SERIAL NO:

DXF-51//K2 110,001–111,210  
DXF-51//K3 111,211–113,901  
DXF-51//K4 121,001 and Higher

**PARTS REQUIRED**

Part No.	Description	Qty.
1-249-429-11	Res, Carbon, 1/4W 10 k $\Omega$	1

Also Required: Sony bond SC608LVZ or equivalent

**ORDERING INFORMATION**

To order parts online, go to: [www.sony.com/servicesplus](http://www.sony.com/servicesplus). For service or parts ordering assistance, refer to the following document, which lists all contact telephone numbers:

Technical Bulletin 00-1999-000

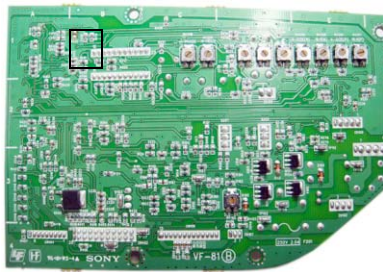
**MODIFICATION PROCEDURE****VF-81 Board (Side B)**

(See Figure 1.)

1. Remove R434.
2. Remove resist from the thru-hole near C414.
3. Solder a 10 k $\Omega$  resistor between the thru-hole near C414 and the pad reserved for R434.

**NOTE:** Make sure the resistor does not float above the board and does not create a solder bridge between the resistor and other components or traces on the board.

4. Affix the resistor to the board with bond.



VF-81 BOARD  
SIDE B

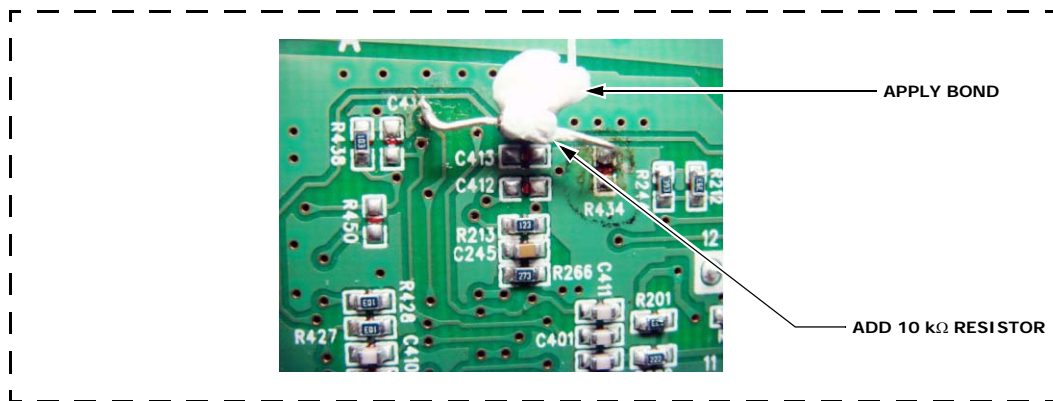
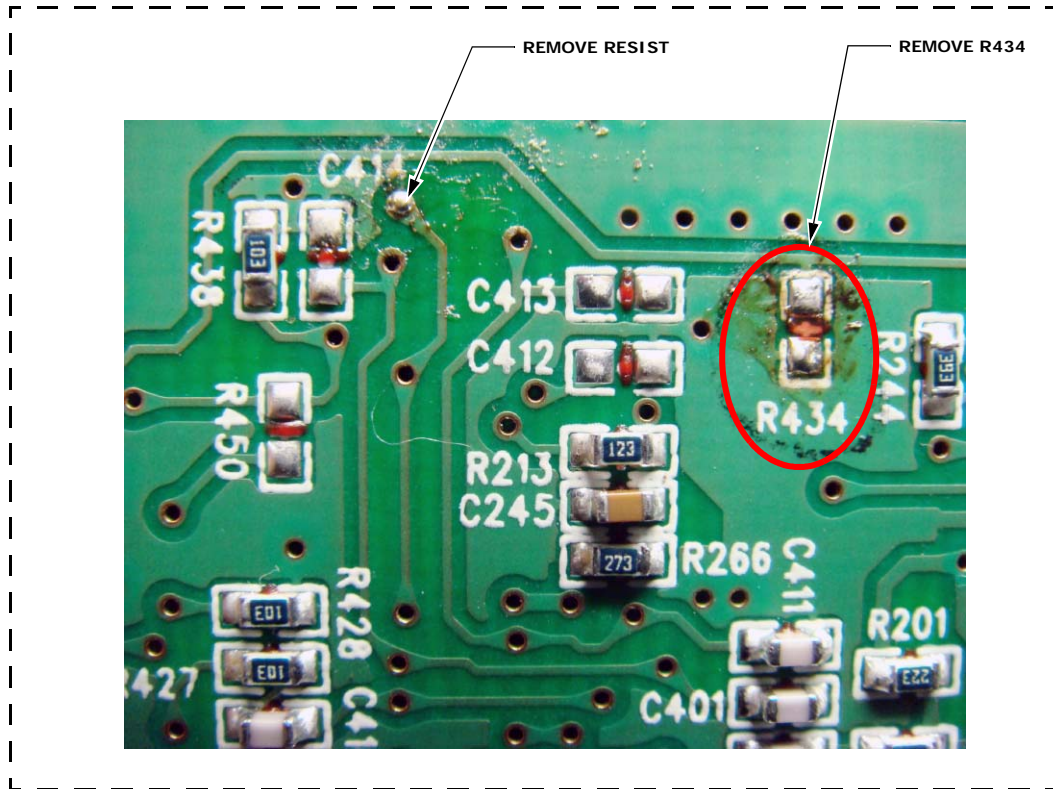


Figure 1