



## Broadcast Products Technical Bulletin 20-2008-010

DATE: January 21, 2008

SUBJECT: B-Y CHANNEL LEVEL FLUCTUATION OF MAIN  
LINE CCU OUTPUT

MODEL: **HDC1550//UF**  
**HDC1550/F**  
**HDC1550/K**  
**HDC1550/K1**  
**HDC1550/K2**

SERIAL NO:

<i>HDC1550//UF</i>	<i>400,001–410,000</i>
<i>HDC1550/F</i>	<i>40,001–40,050</i>
HDC1550/K	10,001–10,010
HDC1550/K1	10,011–10,050
HDC1550/K2	11,001–11,017

*Italicized information in green applies to  
customers outside the United States.*

### DESCRIPTION

Irregular level fluctuation may be detected in the B-Y channel on the main line of the CCU output signal.

The fluctuation is so slight that it cannot be detected on the B-Y channel video monitor, but can be detected on the waveform monitor and is a maximum of approximately 5 mV.

---

**NOTE:** Refer to related Technical Bulletin 20-2007-058.

---

### PARTS REQUIRED

- 30 mm jumper, AWG 28
- Sony bond SC608LVZ or equivalent

### MODIFICATION PROCEDURE

#### TR-136/P Board (Side B, Zone A-2)

(See Figure 1.)

1. Remove R610.
2. Solder a jumper between R610 (upper pad) and IC545 pin 1.
3. Affix the jumper to the board with bond.

### CONFIRMATION

Confirm that the camera turns ON and operates properly.

---

**NOTE:** No adjustment is required.

---



TR-136/P BOARD  
SIDE B, ZONE A-2

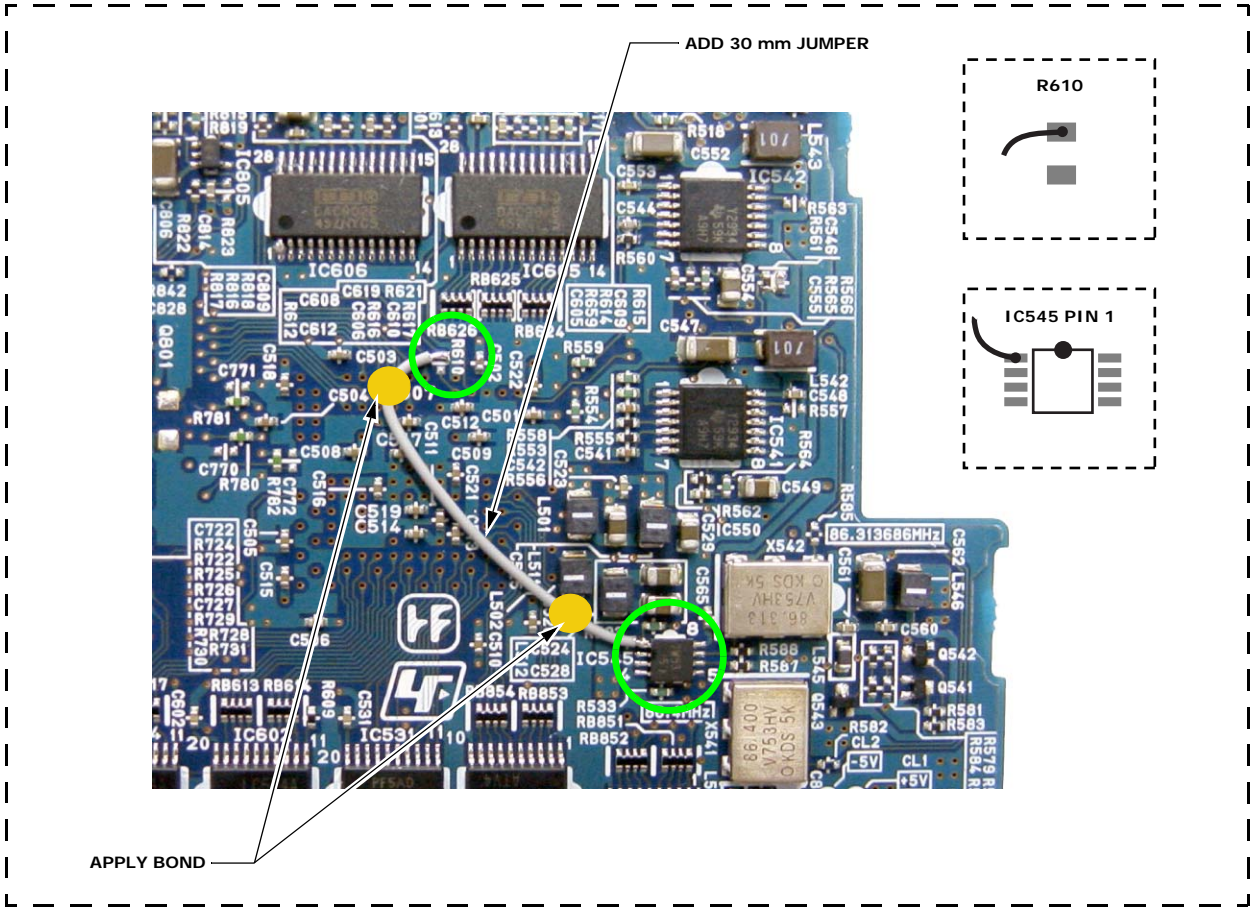


Figure 1