



Broadcast Products Technical Bulletin 20-2008-197

DATE: September 29, 2008

SUBJECT: PARTS REGISTRATION—BAYONET RING AND MOUNT LEVER

MODEL: HDC-900
HDC-900/1
HDC-900/2
HDC-900/3
HDC-900/3
HDC-900/3T
HDC-900/4
HDC-900/4
HDC-900/4T
HDC-910
HDC-910
HDC-910/1
HDC-910/1
HDC-910/1T
HDC-910/T
HDC-930
HDC-930/1
HDC-930/1T
HDC-930/T
HDC-950
HDC-950/1
HDC-950/2
HDC-950/2T
HDC-950/3
HDC-950/3T
HDC-F950
HDC1000//ULW
HDC1000/LB
HDC1000/LB
HDC1000/LW
HDC1000/LW
HDC1000/LW1
HDC1000/LW2
HDC1400//UL
HDC1400/L
HDC1400/T
HDC1400/T
HDC1450//UF
HDC1450/K
HDC1500//UL
HDC1500/L

DESCRIPTION

The following parts related to the CCD unit are available as service parts. (See Figure 1.)

Description	Part No.
Bayonet Ring	9-885-018-96
Mount Lever	9-885-001-63

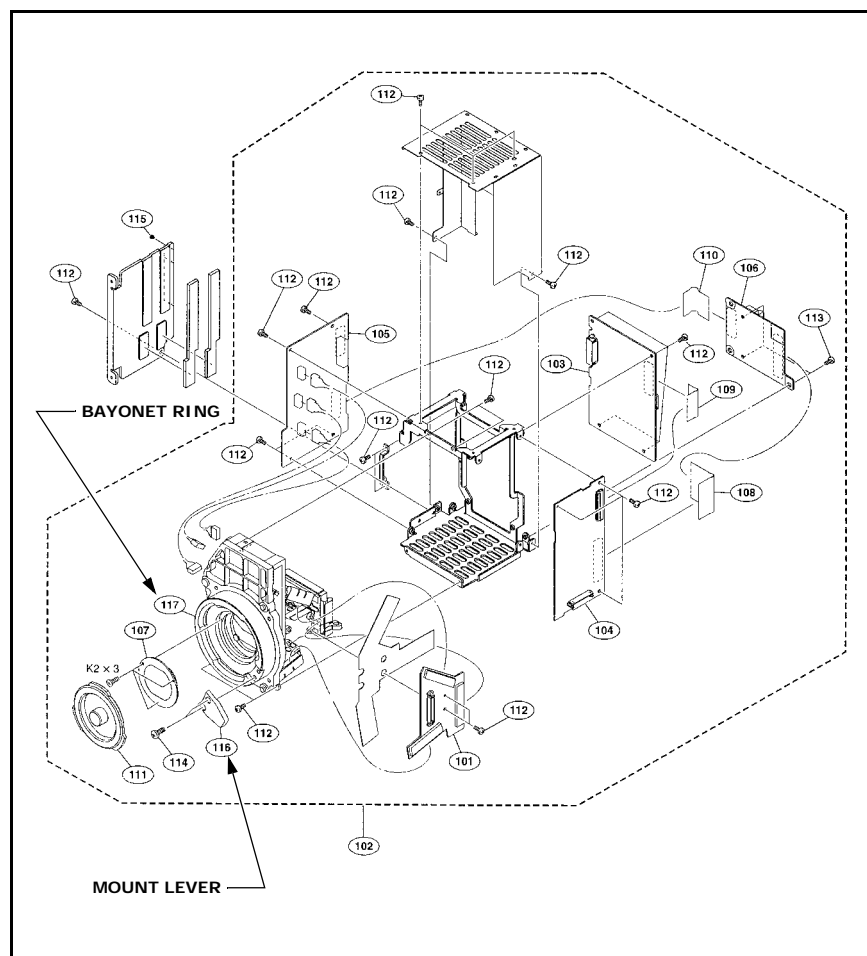


Figure 1

HDVM08-034

HDC1500/L
HDC1500/L1
HDC1500/L2
HDC1500/T
HDC1550//UF
HDC1550//UF1
HDC1550/F
HDC1550/K
HDC1550/K1
HDC1550/K2
HDC1580/L
HDC1580/L1
HDC1580/T
HDC3300/L
HDC3300/L
HDC3300/T

SERIAL NO: ALL

Italicized information in green applies to customers outside the United States.

ORDERING INFORMATION

To order parts online, go to: <http://www.sony.com/servicesplus>.
For service or parts ordering assistance, refer to the following document, which lists all contact telephone numbers:

Technical Bulletin 00-1999-000