



Broadcast Products Technical Bulletin 20-2009-091

DATE: May 4, 2009

SUBJECT: PARTS REGISTRATION—OUTSIDE PANEL SUB ASSEMBLY

MODEL: *HDC1400//UL*
HDC1400/L
HDC1400/T
HDC1400/T
HDC1450//UF
HDC1450/K
HDC1500//UL
HDC1500/L
HDC1500/L
HDC1500/L1
HDC1500/L2
HDC1500/T
HDC1500/T2
HDC1550//UF
HDC1550//UF1
HDC1550/F
HDC1550/K
HDC1550/K1
HDC1550/K2
HDC1580/L
HDC1580/L1
HDC1580/T
HDC3300/L
HDC3300/L
HDC3300/T
HDC3300/T

SERIAL NO: ALL

Italicized information in green applies to customers outside the United States.

DESCRIPTION

The outside panel sub assembly is available as service part number **A-1128-448-A**. (See Figure 1.)

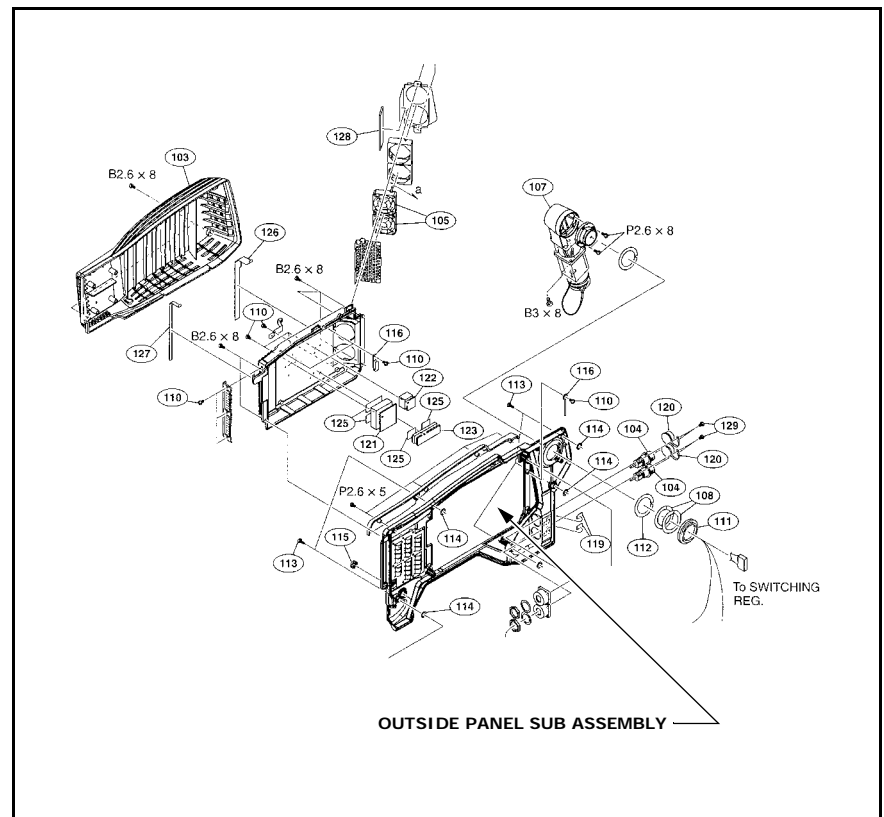


Figure 1

ORDERING INFORMATION

To order parts online, go to: <http://www.sony.com/servicesplus>. For service or parts ordering assistance, refer to the following document, which lists all contact telephone numbers:

Technical Bulletin 00-1999-000