



Broadcast Products Technical Bulletin 20-2009-203

DATE: November 9, 2009

SUBJECT: DUST ON ND FILTER

MODEL: HDC1000R/LW
HDC1400//UL
 HDC1400/L
HDC1400/T
 HDC1400/T
 HDC1400R/L
HDC1450//UF
 HDC1450/K
 HDC1450R/K
HDC1500//UL
HDC1500/L
 HDC1500/L
 HDC1500/L1
 HDC1500/L2
HDC1500/T
 HDC1500/T2
 HDC1500R/L
HDC1550//UF
HDC1550//UF1
HDC1550/F
 HDC1550/K
 HDC1550/K1
 HDC1550/K2
 HDC1550R/K
HDC1580/L
HDC1580/L1
HDC1580/T
HDC1580R/L
HDC3300/L
 HDC3300/L
HDC3300/T
 HDC3300/T
 HDC3300R/L

DESCRIPTION

If the camera is used in smokey or dusty environments, dust may enter the camera through unused screw holes and smudge the back surface of the optical ND filter (prism side). (See Figure 1.)

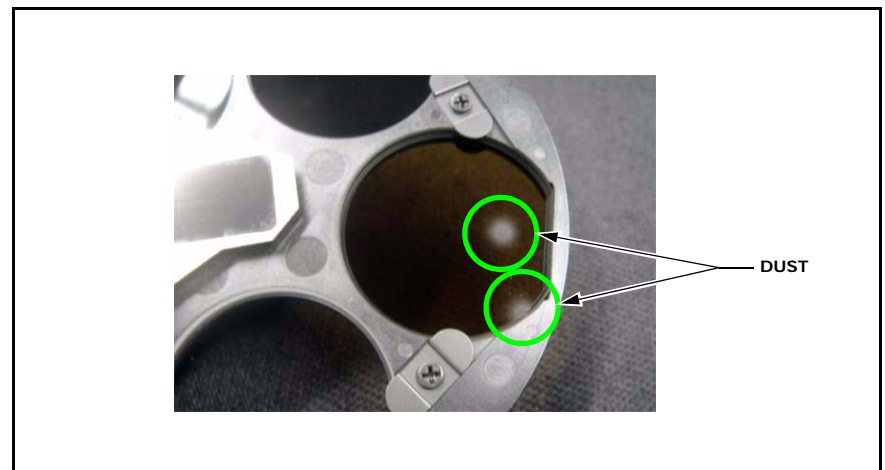


Figure 1

PARTS REQUIRED

Part No.	Description	Qty.
3-707-238-01	Sealing Seal	2

ORDERING INFORMATION

To order parts online, go to: www.sony.com/servicesplus. For service or parts ordering assistance, refer to the following document, which lists all contact telephone numbers:

Technical Bulletin 00-1999-000

SERIAL NO:

HDC1000R/LW 10,001

HDC1400//UL All

(Part 1 of 2)

Italicized information in green applies to customers outside the United States.

HDVM09-048

MODIFICATION PROCEDURE

1. Remove the CCD block from the camera (four screws).

NOTE: Refer to the maintenance manual, volume 1 for detailed instructions on how to remove the items described in this procedure.

2. Remove the filter disc from the CCD block (two screws and a harness).

SERIAL NO: (Continued)

HDC1400/L	All
	All
<i>HDC1400/T</i>	<i>All</i>
HDC1400/T	All
HDC1400R/L	10,001
<i>HDC1450//UF</i>	<i>All</i>
HDC1450/K	All
HDC1450R/K	10,001
<i>HDC1500//UL</i>	<i>All</i>
<i>HDC1500/L</i>	<i>All</i>
HDC1500/L	All
HDC1500/L1	All
HDC1500/L2	All
<i>HDC1500/T</i>	<i>All</i>
HDC1500/T2	All
HDC1500R/L	10,001–10,004
<i>HDC1550//UF</i>	<i>All</i>
<i>HDC1550//UF1</i>	<i>All</i>
<i>HDC1550/F</i>	<i>All</i>
HDC1550/K	All
HDC1550/K1	All
HDC1550/K2	All
HDC1550R/K	10,001
<i>HDC1580/L</i>	<i>All</i>
<i>HDC1580/L1</i>	<i>All</i>
<i>HDC1580/T</i>	<i>All</i>
<i>HDC1580R/L</i>	<i>50,001</i>
<i>HDC3300/L</i>	<i>All</i>
HDC3300/L	All
<i>HDC3300/T</i>	<i>All</i>
HDC3300/T	All
HDC3300R/L	10,001

(Part 2 of 2)

Italicized information in green applies to customers outside the United States.

3. Confirm that the dust on the filter disc matches the unused screw holes.
4. Remove the dust from the filter.
5. Remove the OHB cover and electric heater plate (PRISM-OP, portable camera) or OHB heat sink (large camera) from the CCD block.
6. Remove the PA board from the CCD block.
7. Affix sealing seals to the unused screw holes. (See Figure 2.)

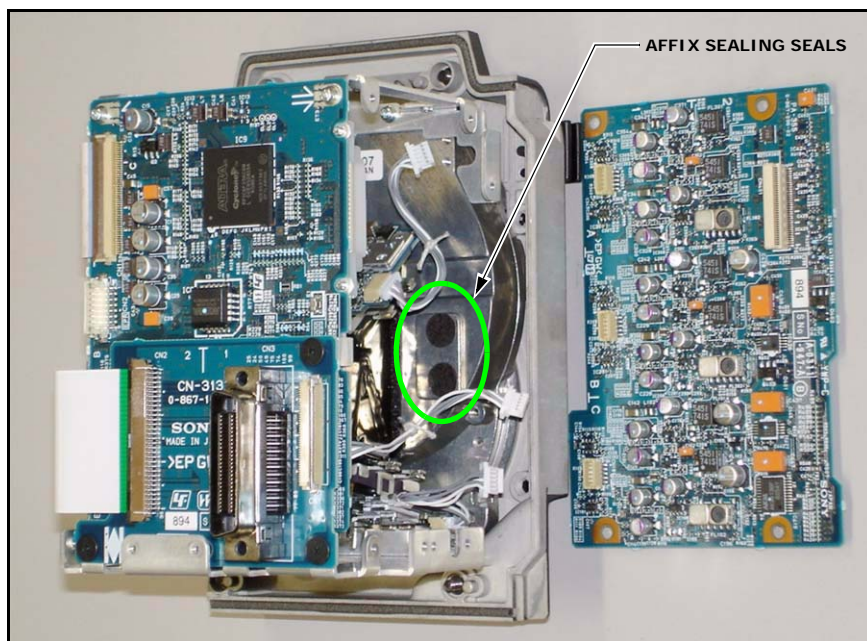


Figure 2

CONFIRMATION

Confirm that the picture is normal and the filter disc rotates.