



Broadcast Products Technical Bulletin 20-2010-026

DATE: February 8, 2010

SUBJECT: HORIZONTAL BAR NOISE WITH 25PsF/29.97PsF

MODEL: *HDC1500//UL*
HDC1500/L
 HDC1500/L
 HDC1500/L1
 HDC1500/L2
HDC1500/T
 HDC1500/T2
HDC1550//UF
HDC1550//UF1
HDC1550/F
 HDC1550/K
 HDC1550/K1
 HDC1550/K2

SERIAL NO: ALL

Italicized information in green applies to customers outside the United States.

DESCRIPTION

Faint horizontal bar noise may appear on the screen while running in 1080/25PsF, 1080/29.97PsF modes. (See Figure 1.)

NOTE: The amount of noise differs among individual cameras.

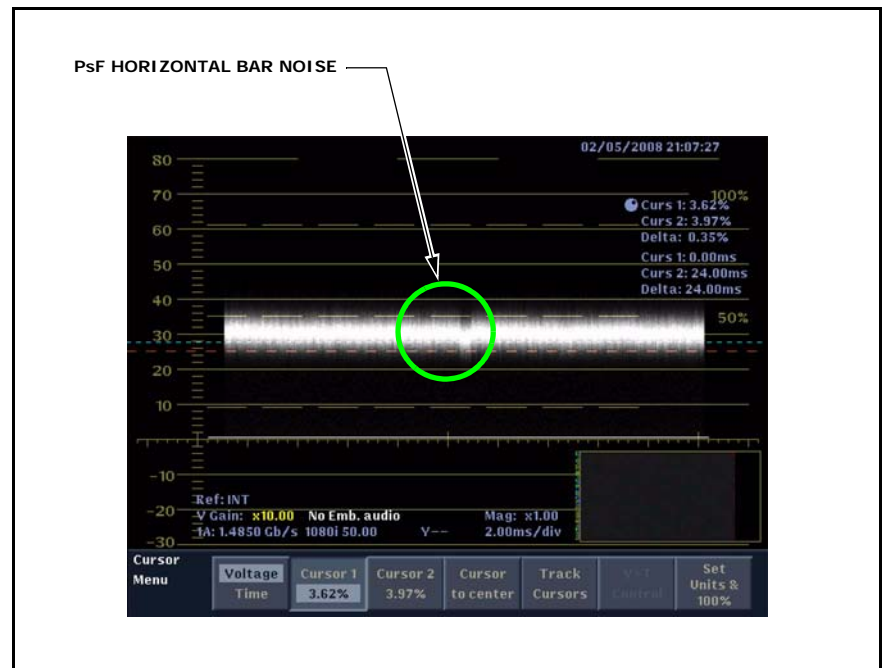


Figure 1

MODIFICATION PROCEDURE

1. Remove the outside panel assembly (five screws).

NOTE: Refer to the service manual, volume 1, section 1-4, "Opening/Closing the Side Panel."

2. Tighten the four M2.6×5 screws that affix the DPR-265 board with a tightening torque of 0.53 N·m (5.3 Kgf·cm). (See Figure 2.)
3. Tighten the M2.6×5 screw that affixes the DPR rear bracket to the chassis with a tightening torque of 0.53 N·m (5.3 Kgf·cm). (See Figure 2.)
4. Reattach the outside panel assembly.

HDVM08-124

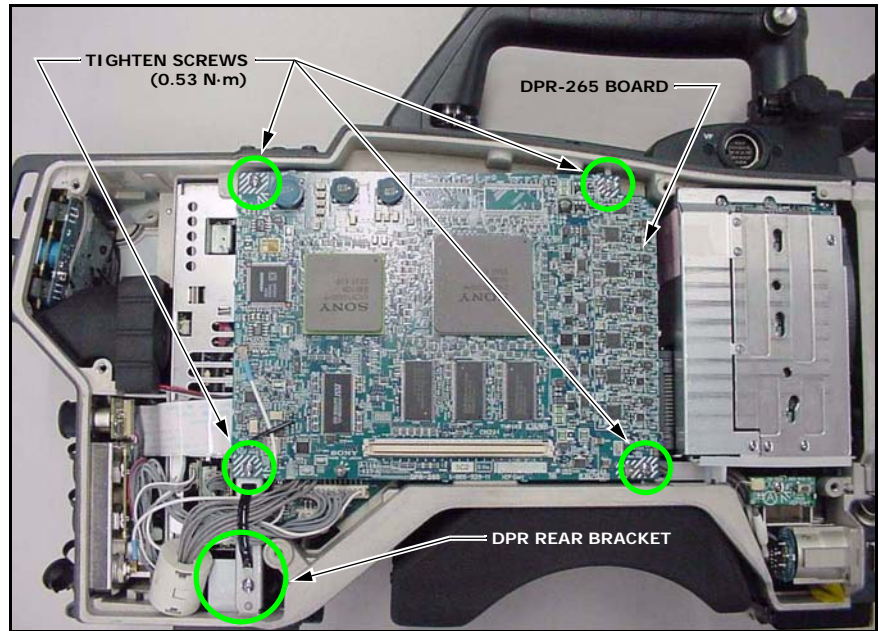


Figure 2

CONFIRMATION

Confirm that:

- Video output is normal in 1080/25PsF, 1080/29.97 PsF modes.
- Horizontal bar noise is improved. (See Figure 3.)

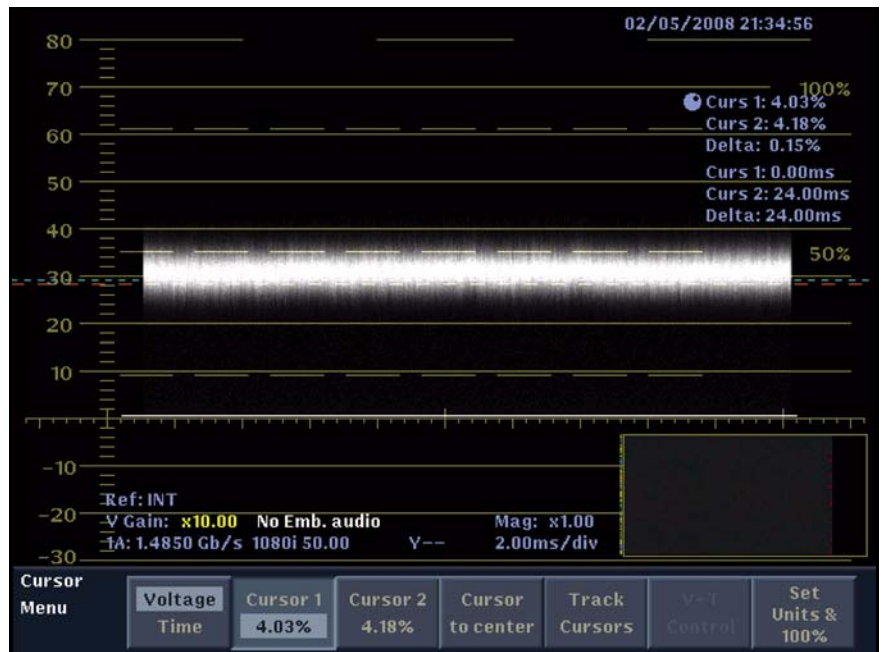


Figure 3