



HD Multi-Purpose Camera

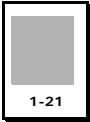
## Broadcast Products Technical Bulletin 20-2011-050

DATE: May 23, 2011

SUBJECT: **MANUAL CORRECTION—MEMORY STICK FOR  
SOFTWARE VERSION UPGRADE**MODEL: **HDC-P1//U**SERIAL NO: **ALL****DESCRIPTION**

Correct the following manual as shown in Figure 1.

*HDC-P1 Maintenance Manual, 1<sup>st</sup> Edition**HDCM10-034*



## SECTION 1 SERVICE OVERVIEW

### 1-10. SOFTWARE VERSION UPGRADE

#### 1-10. Software Version Upgrade

The ROM (IC118, IC122) on the AT-163APT board and the ROM (IC209, IC210) on the IF-1129 board can be upgraded using a Memory Stick Duo.

Upgrade the software version using the following procedure.

PRO

##### 1-10-1. Upgrading Program Version

There are the following three methods of program upgrade.

- Upgrade the AT-163APT or IF-1129 board from the menu.
- Upgrade the AT-163APT board in the power-on startup process.
- Upgrade the IF-1129 board in the power-on startup process.

##### Device used

Memory Stick Duo

PRO

##### Preparations

Copy the program for version upgrade in a Memory Stick Duo using the following procedure.

##### Note

For how to obtain the program for version upgrade, contact your local Sony Sales Office/Service Center.

- (1) Create the following directory in a Memory Stick Duo.

¥MSSONY¥PRO¥CAMERA¥HDCPI

PRO

- (2) Copy the program file to the directory created in step (1).

File for the AT-163APT board: "hdcpl1at.rom"

File for the IF-1129 board: "hdcpl1if.rom"

##### Upgrading the AT-163APT or IF-1129 board from the menu

1. Insert the Memory Stick Duo that contains the program for version upgrade.
2. Display ROM VERSION of the DIAGNOSIS menu from the TOP menu.
3. Press long the menu control knob while the cursor next to "D03" on the monitor screen is "?".  
The version upgrade menu is displayed.
4. Select the board to be upgraded and start version upgrade.  
The upgrade status appears on the monitor screen.
5. Upon completion of the version upgrade, a message "Complete" appears.
6. Check ROM VERSION of the DIAGNOSIS menu to make sure that the AT-163APT or IF-1129 board has been upgraded.

PRO

##### Upgrading the AT-163APT board in the power-on startup process

1. Insert the Memory Stick Duo that contains the program for version upgrade.
2. Turn on the power while pressing the menu control knob.  
The upgrade status appears on the monitor screen.
3. Upon completion of the version upgrade, a message "Complete" appears.
4. Check ROM VERSION of the DIAGNOSIS menu to make sure that the AT-163APT board has been upgraded.

PRO

Figure 1