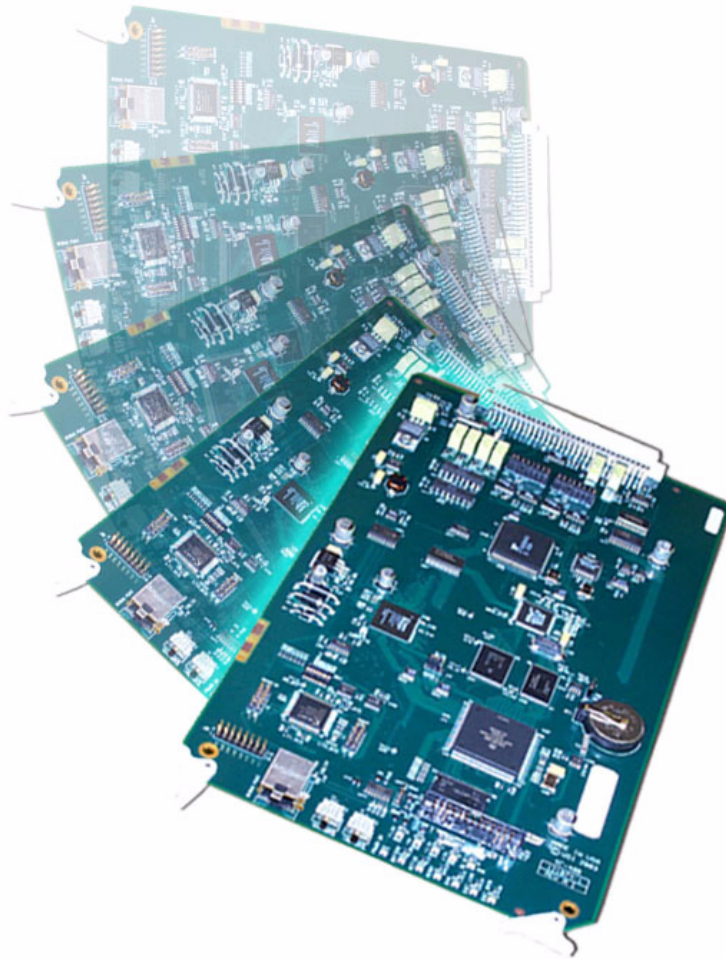


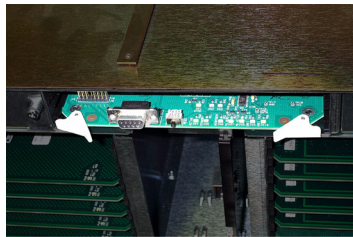


SC-400 Setup Addendum



SC-400 Control Board

Though the SC-200 or SC-400 Control Board can be used within the UTAH-400 64x chassis, the SC-400 serves as a functionality and part upgrade to the SC-200. Either slot can be used within the chassis, and when in place, the 64x64 Router becomes a self-contained unit.



Board placement within the 64x64 router

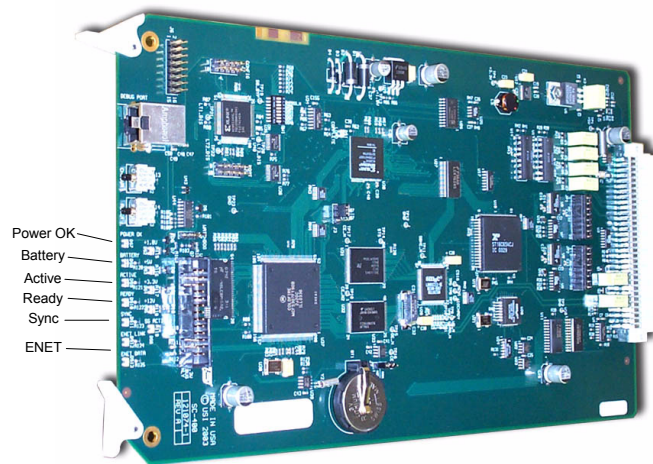


FIGURE 1-1. SC-400 Control Board View

The SC- 400 LED Indications

- The 'Ready' LED indicates whether or not the cards are in sync and communicating with one other.
- Active, which indicates the 'controlling' card when the board is part of a redundant pair. The LED is green (ready) when the card is in default status. The current default card will give up control to its alternate when the **changeover** button is pressed.
- Power Ok. All power supplies are functional.
- Power Error indications. Located behind the Power Ok LED, these will illuminate to indicate a problem with a specified power supply.
- Battery Error. Will illuminate when the battery is low.
- Sync LED -- Will illuminate when an NTSC composite signal is in place -- allowing vertical interval switching.
- Ethernet link -- Illuminates when the ethernet port is in use.

SC-400 Jumper Settings

- J2 Switch -- Used to clear the RAM
- JP1 -- Serial Port 1 -- **RS-232**
- JP2 -- Serial Port 2 -- **RS-422**

SC-400 Dipswitch Setting

User Switch 0

When set, the system will initiate a software load, though the Linux application itself will not start. This is typically used for factory troubleshooting.

User Switch 1

User switch 1 determines which of the two memory banks is in use. A change to either memory partition (0 or 1) will not affect the other. The actual switch position determines which memory partition is in use.

User Switch 5

Used to start the Linux operating system, but not the actual application.

User Switches 2 - 4

Undefined at this time.

Bypass Switch

Also used for factory troubleshooting. The default configuration is all switches positioned toward the silk-screened numbers, or to the *right* as the board is viewed from the front.