



HDCC-OP47

(WST/OP-47)

HD/SD-SDI Closed Captioning Solution

[HDCCRegEditOP47 User Guide](#)

HDCCRegEditOP47: V1.40

HDCC-OP47 FPGA: V2.40

HDCC-OP47 PIC: V1.10

Part Number 821137, Revision A

© 2011 Wohler Technologies, Inc. All rights reserved.

This publication is protected by federal copyright law. No part of this publication may be copied or distributed, stored in a retrieval system, or translated into any human or computer language in any form or by any means electronic, mechanical, manual, magnetic, or otherwise, or disclosed to third parties without the express written permission of Wohler Technologies.

Reproduction

Licensed users and authorized distributors of Wohler Technologies, Inc. products may copy this document for use with Wohler Technologies, Inc. products provided that the copyright notice above is included in all reproductions.

Customer Support

Wohler Technologies, Inc.
31055 Huntwood Avenue
Hayward, CA 94544
www.wohler.com

Phone: 510-870-0810
FAX: 510-870-0811
US Toll Free: 1-888-596-4537
(1-888-5-WOHLER)
Web: www.wohler.com
Sales: sales@wohler.com
Support: support@wohler.com

Disclaimers

Even though Wohler Technologies, Inc. has tested its equipment and software, and reviewed the documentation, Wohler Technologies, Inc. makes no warranty or representation, either express or implied, with respect to software, documentation, their quality, performance, merchantability, or fitness for a particular purpose.

Wohler Technologies, Inc. reserves the right to change or improve our products at any time and without notice.

In no event will Wohler Technologies, Inc. be liable for direct, indirect, special, incidental, or consequential damages resulting from any defect in the hardware, software, or its documentation, even if advised of the possibility of such damages.

Some states do not allow the exclusion or limitation for incidental or consequential damages, so the above exclusion or limitation may not apply to you.

Printing

This document is intended to be printed on a duplex printer, such that the copy appears on both sides of each page. This ensures that all new chapters start on a right-facing page.

This document looks best when printed on a color printer since some images may be indistinct when printed on a black and white printer.

Other Technologies and Products

Microsoft Windows and Internet Explorer are registered trademarks of Microsoft Corporation.

Evertz is a trademark or registered trademark of Evertz Microsystems, Ltd.

Codan is a trademark or registered trademark of Codan Broadcast Products Pty Ltd.

IRT is a trademark or registered trademark of IRT Electronics Pty Ltd.

Last Update

July 15, 2011

Table of Contents

Chapter 1. Modifying the Registers	1
Introduction	1
Overview	1
Topics	1
Setting Up the Hardware	2
Establishing Communications from the PC to the HDCC	2
Editing the Register Table	5
 Chapter 2. Saving the Configuration and Setting Preferences	 9
Introduction	9
Overview	9
Topics	9
Exporting/Importing the Configuration	10
Exporting the Configuration	10
Importing the Configuration	10
Setting Preferences	11
Displaying the Application Information	12

CHAPTER 1

Modifying the Registers

Introduction

Overview

This document describes how to install and use the HDCCRegEditOP47 application for the HDCC-OP47 product line.

Topics

Topics	Page
Setting Up the Hardware	2
Establishing Communications from the PC to the HDCC	2
Editing the Register Table	5

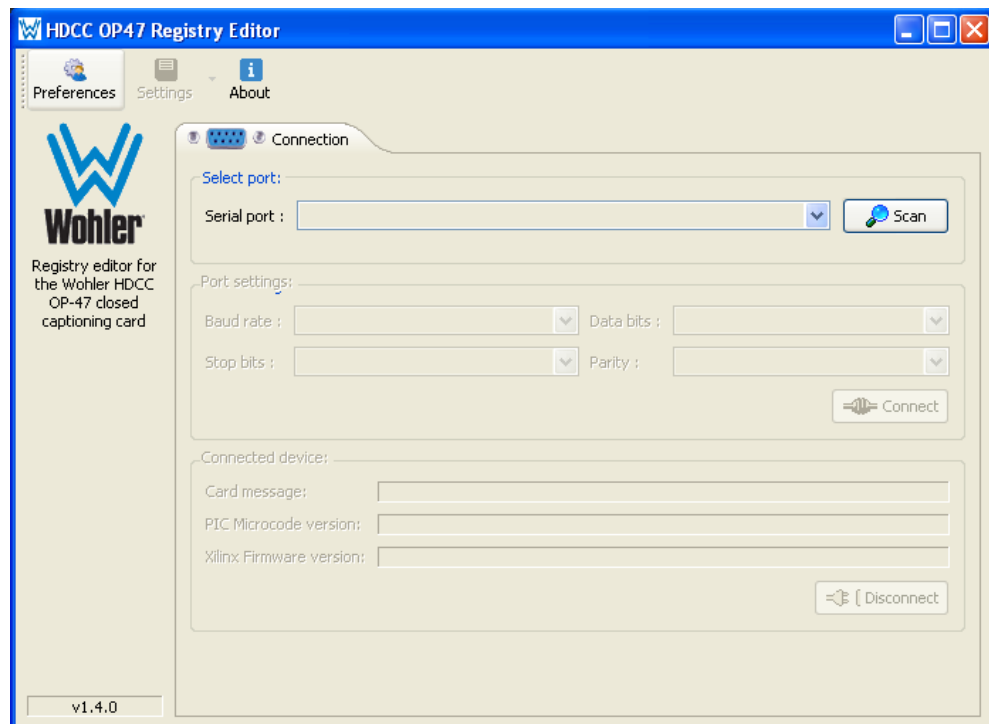
Setting Up the Hardware

1. Refer to the *HDCC Installation* (PN 821135) for instructions to connect your HDCC card to your PC and video sources.
2. In our example, we're using the serial port to demonstrate how to set the serial communications. Set **Switch 1 to E** to access the engineering menu via the serial port.

Establishing Communications from the PC to the HDCC

1. On the PC, launch **HDCCRegEditOP47**.
Note: The HDCCRegEditOP47 application runs on Microsoft® Windows XP, Windows Vista, and Windows 7.
2. When the application window displays ([Figure 1-1](#) below) click **Scan** to display the available COM ports.

Figure 1-1 HDCC Registry Editor



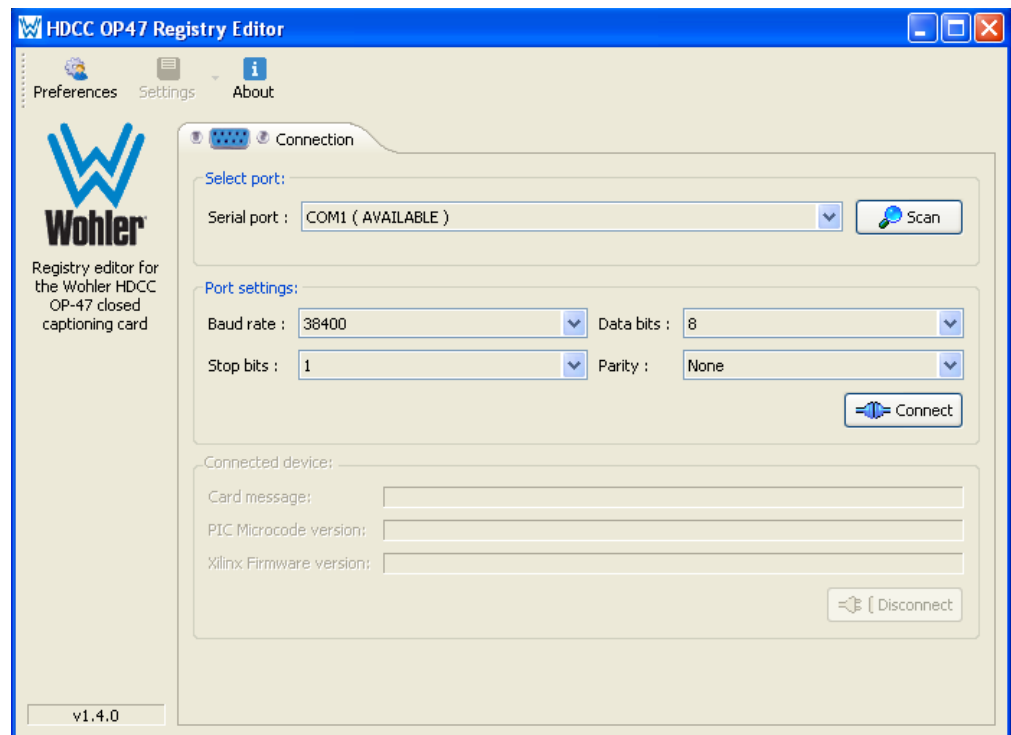
Establishing Communications from the PC to the HDCC

3. On the **Connection** tab, click the drop down arrow for the **Serial port** and select the serial port to which you have connected the HDCC card.
4. In the **Port settings** section, do not change the port settings. Use the settings shown in [Figure 1–2](#) below.

Note: Port settings should remain at 38400, 8N1 in the **Connection** tab for the current HDCC hardware platform. This includes Codan, Evertz and IRT form factor cards.

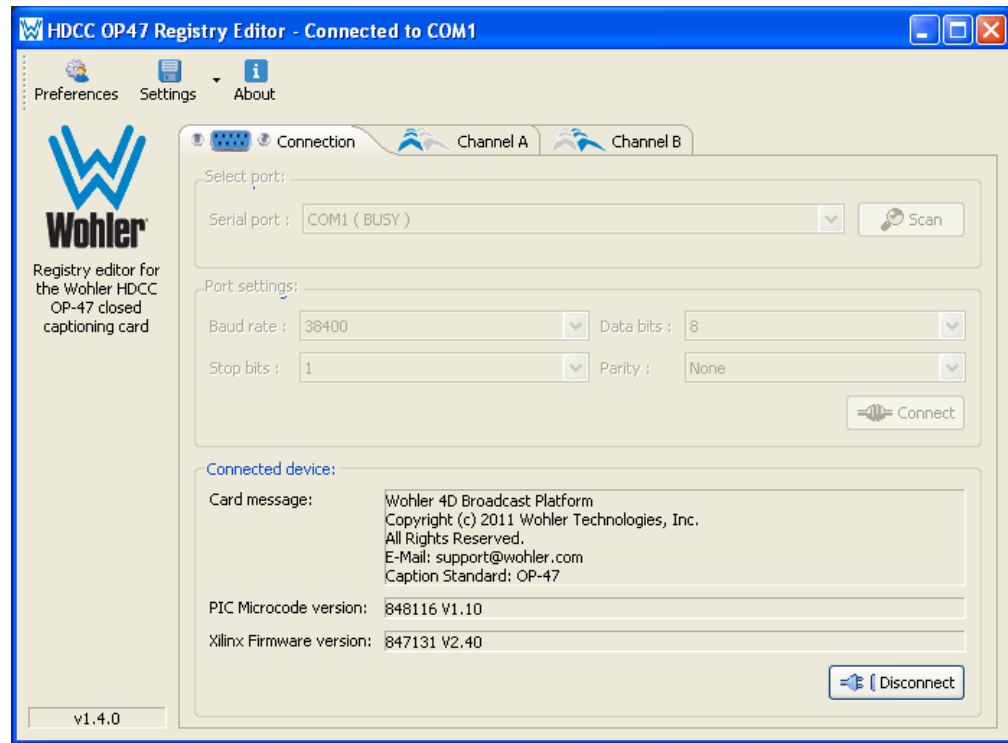
5. Click **Connect**.

Figure 1–2 Setting the Port Settings



When the PC has established communications with the HDCC card, the **HDCCRegEditOP47** application window will display the Wohler copyright and the software part number and version (Figure 1-3 below).

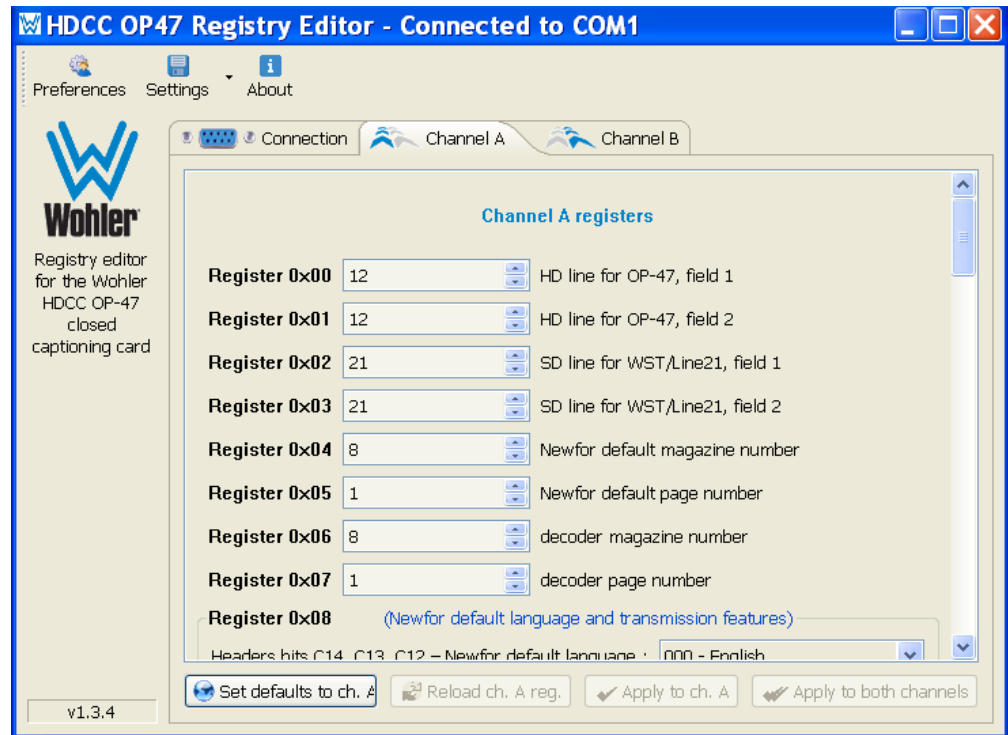
Figure 1-3 Establishing Communication



Editing the Register Table

1. Click on the **Channel A** tab as shown in Figure 1–4 to display the current register values for all the registers affecting Channel A.

Figure 1–4 Displaying the Channel A Registers (Top)

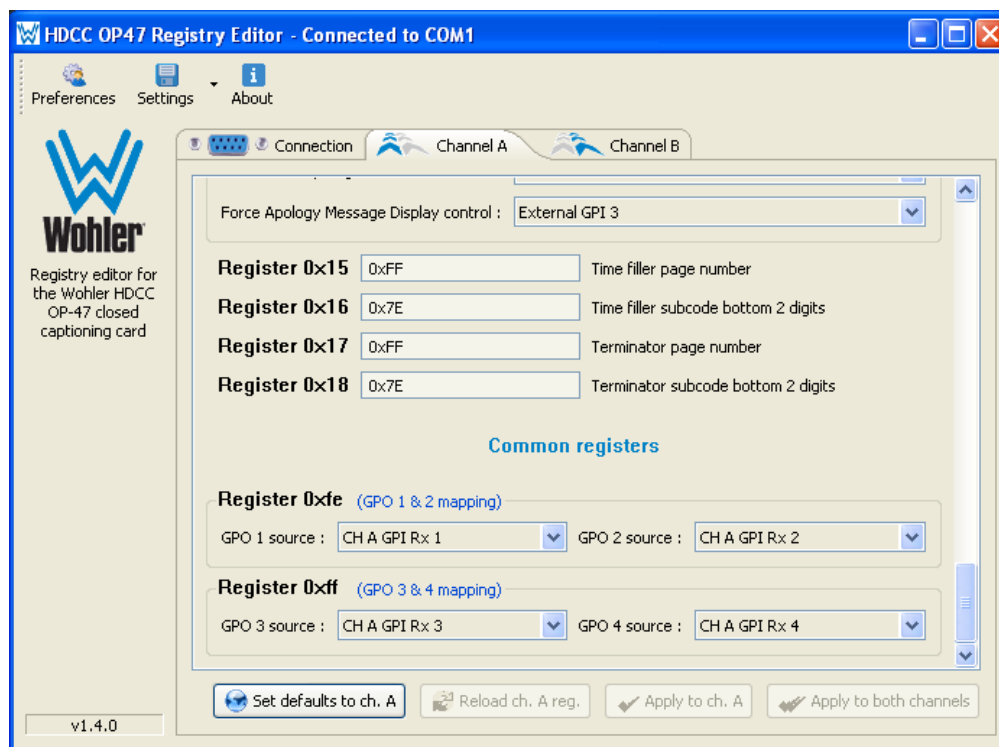


Chapter 1 Modifying the Registers

Editing the Register Table

2. Scroll down to see the rest of the register values (shown in Figure 1-5 below).

Figure 1-5 **Displaying the Channel A Registers (Bottom)**



Important: Before making any register value changes, refer to the configuration guide associated with your product (PN 821138, 821139, or 821140). The examples in Figure 1-4 and Figure 1-5 above show the register values of the HDCC-OP47MULTI.

In the event you want to start over and reload the factory defaults, click **Set defaults to ch. A.** (or **Set defaults to ch. B.** for Channel B).

3. Modify the register values as needed by using either the drop-down lists, or by typing in the register values.

To restore the registers values that the card had before your changes, click **Reload ch. A reg.** button.

To restore the factory defaults register values, click **Set defaults to ch. A** button.

When all of the registers' values are correct, click **Apply to ch A** to save your new settings to the card.

4. Click the **Channel B** tab and repeat the same process for Channel B.
5. Remember to click **Apply to ch B** to save your changes.

CHAPTER 2

Saving the Configuration and Setting Preferences

Introduction

Overview

This chapter describes how to export the register settings to a file, how to import them from a file, and how to save your preferences.

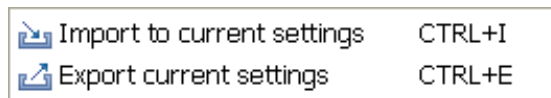
Topics

Topics	Page
Introduction	9
Exporting/Importing the Configuration	10
Setting Preferences	11
Displaying the Application Information	12

Exporting/Importing the Configuration

1. Click **Settings** button at the top left corner of the application window.

Figure 2–1 Settings Options



- Click **Export current settings** (or press Ctrl+E) to export your current card settings, or
- Click **Import to current settings** (or press Ctrl+I) to import the configuration settings stored in the file.

Exporting the Configuration

1. When the dialog displays, navigate to the location where you want to create the file .
2. Name the file and click **Save**. (The file stores in XML format.)

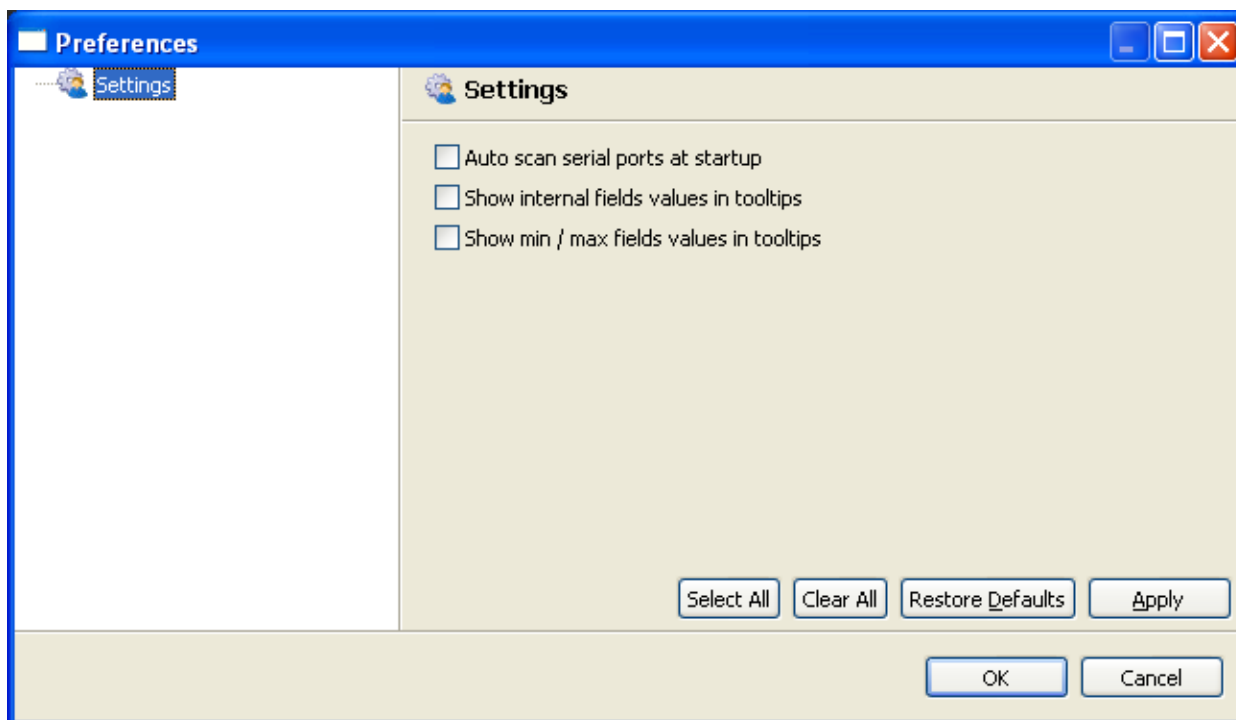
Importing the Configuration

1. When the dialog displays, navigate to the location where you stored your configuration file.
2. Double-click the filename. As soon as the dialog disappears, the HDCCRegEditOP47 will import the register values from the file.

Setting Preferences

1. To set your preferences for the **HDCCRegEditOP47** application, click to check (or uncheck) the boxes under **Settings** in the right pane (Figure 2–2 below).

Figure 2–2 Preferences Dialog



2. Click **OK** to save and close the dialog, or click **Cancel** to cancel your changes and close the dialog.

Displaying the Application Information

1. To display the application name, part number, and revision number, click on the **About** button shown in [Figure 2-3](#) below.

Figure 2-3 **About Dialog**



2. Click **OK** to close the dialog.